



Proud to be locally owned!

JAYLINE
 your fire place
 T's & C's apply. Excludes ULEBs. Limited time only.
 70 Wilson St, Whanganui Ph 06 347 6970
 www.combinedplumbers.co.nz

52 Ingestre Street, Whanganui. Phone 345 3666 or 345 3655, email rivercitypress@xtra.co.nz

Isobel Ewing wishes climate change was front & centre of election campaign

BY DOUG DAVIDSON

The chances are you have seen Isobel Ewing in action as a reporter for Newshub (TV3, Prime or now Open Sky) as she has had seven years so far in television and is currently a senior reporter, presenter and Climate Correspondent for the company.

She was recently in Whanganui as the guest speaker for a meeting organised by the local branch of the National Council of Women NZ at the Alexander Library, marking the 130th year since New Zealand women were given the vote.

Isobel has a connection with Whanganui. Her grandmother, Jean Ewing, lives here, and her aunt Aylsa Stewart was described by then Mayor

Hamish McDouall at the time of her death in 2021 as "one of the great Whanganui people."

After completing a degree in Classics, Isobel did the post-grad journalism course at Massey University in Wellington in 2012. She says, "I was always curious and was good at writing and talking. It seemed a natural fit."

During the course, Isobel did some work experience

at the Whanganui Chronicle and then got her first job at the Taranaki Daily News. "I felt so at home that it didn't feel like work. There was so much variety. During this time, there was a Women's Surf Tour in Taranaki, and I got a week on the beach interviewing them."

She focussed on regional council activities, oil and gas and the environment and was nominated for the Journalism Environment award. She later received the Environmental Sustainability Award at the Voyager Media Awards in 2018.

The lure of travel took her and her brother cycling through Uzbekistan, Tajikistan and Pakistan (countries to the north and west of India) and when it came to an end, Isobel wanted to go on to Europe. "I emailed an American news agency which was used by TV3 enquiring and they replied immediately saying they were familiar with my work."

This led to an offer to be their foreign correspondent with a choice of three cities, including Paris. "However, I chose Budapest, the capital of Hungary, as it was the most unusual. I arrived in January 2020, a month before the borders were closed."

"I loved it. It was the coolest place to live. As there were no tourists, I could go for a run along the ancient cobble streets, past old castles."

She had a Hungarian camera operator who would translate for her as "70% of my interviews were in Hungarian. Again, there was a lot of variety with stories, such as rafts being made of trash and the revival of ancient Hungarian guard dogs."

The Covid pandemic was a regular news story taking her to the World Health Organisation in Geneva, Switzerland. Isobel also reported for CGNT, the state-run Chinese news channel. "They didn't care about the topics unless China was men-

tioned."

Returning to New Zealand in December 2020, she went to Wānaka. (Isobel is a keen skiing and trail runner) and did freelancing for TV3 before becoming a reporter in the Press Gallery in Parliament.

She describes being in the Press Gallery as being "in a bit of a bubble. When I started, Paddy Gower was my boss. You end up by living and breathing politics. It is day to day theatre and you have to dig through all the spin."

Isobel had to push for her current role as climate correspondent for NewsHub. "It is the biggest issue of our time and needs specialist treatment. You have to build up knowledge on the issue. It is frustrating that it is not front and centre in the election campaign."

While she hasn't personally experienced any gender discrimination, she recognizes the huge gains for women in her lifetime and career. She recently



Isobel Ewing

had a trip to Antarctica and notes - "the first New Zealand woman who went there was in 1969. They didn't have facilities for women and no female uniforms."

en Clark, Jacinda giving birth while Prime Minister, equal numbers of males and female MPs as well as equal representation in cabinet. However, we still have a way to go."

WANGANUI
BEDROOM Specialists
OPEN 7 DAYS
 Locally owned & operated
 151 St Hill Street, Wanganui
 Phone 06 345 6084

let's get **connected**

southcombe electrical
 Specialising in Heat Pumps, Residential/ Commercial Electrical Installations and Electrical Maintenance.
 admin@southcombeelectrical.co.nz
 www.southcombeelectrical.co.nz
 2 Buxton Road, Westmere Wanganui
 Phone (022) 358 6658
 Find us on Facebook

Speedy Signs
 grow your business faster
 Call **06 213 4555**
 53C Wilson Street, Whanganui, 4500

Half Price.
 Sleepyhead Chiropractic ranges.
 2 years interest free*
 *On purchases \$999 & over to 10/10/23

FLOORSTOCK FURTHER REDUCED TO CLEAR!

DIMOCKS HOMESTORE
 100% Beds Rus PH 06 348 4877
 190 VICTORIA AVE, WANGANUI **OPEN 7 DAYS**

From **\$1,899** Chiropractic Prime Queen Set
 From **\$2,599** Chiropractic Radius Queen Set
\$3,799 Chiropractic Apex Queen Set

Endorsed by the NZ Chiropractors' Association

Campus Open Events

Scan the QR code to register a time to come and see us.

ENROL NOW
 We have courses in:

- Animal Care
- Rural Animal Technician
- Carpentry Level 3
- Agriculture Level 3 - Dairy

AGC TRAINING FOR INDUSTRY
 CHALLENGE YOUR FUTURE! WHAKAAHIA TO WERO
 Call 0800-348 8215 www.agctraining.co.nz

Check out what's in this week's RCP

It was good to meet Isobel Ewing in person after seeing her on television news over the years. (See our front-page article) She is a lively, interesting person, easy to chat with — in short a great TV journalist. It was good to hear that she is in the role of Climate Change correspondent for Newshub.



Doug Davidson
journalist@rivercitypress.co.nz

I visited Nova Zeelandia Vikings on their open day recently and was really impressed by both their organisation and dedication. It is more than heavy armour, blunt swords and fighting. It is also about Viking life, culture and costumes (page 2).

In the last couple of months, I have had stories about six 100-year-olds. Is there something about Whanganui, or perhaps the region, as a couple of them have come from Hawera and Marton. Great to see a male centenarian as the others have been fe-

males (see page 3).

The Rev Mo Morgan has made a significant impact over the past ten years in St James Presbyterian Church in Whanganui East, but her new position as Lower North manager of A Rocha — a Christian environmental organisation, should be a great move (page 8).

We also have a heart-warming article about Mike Collins, Craig Cawley and MS (page 18).

- Doug Davidson

Nova Zeelandia Vikings - ready to promote all things Viking

Perhaps the typical images we have of Vikings are warriors with huge swords, clubs and spears. Scary enough to make you run for the hills. However, the Whanganui group Nova Zeelandia Vikings is a group which encourages not only the less than dangerous fighting but also enjoying other aspects of Viking life such as the costumes, the food and the crafts.

The group has been in Whanganui for since the early 2000s, but it is undergoing a period of revival, thanks in part to the opening of their own club house complete with a fighting 'arena', a kitchen, a bookshelf of books about Vikings, a verandah, along with sheds for costumes/ changing and tool-making and for art and crafts. We shouldn't forget the swimming pool with an outdoor shower. It can be hot work fighting.

Angie is a key person in the revival, partly because the club facilities are at the back of her property in Alma Road but also because she has the drive

and energy (not bad for a grannie) to spread the word.

She has been able to get a fully enclosed trailer made to enable the group to attend events, called 'Naama' (or big encampment) such as one in Norsewood in February. (Note it down in next year's calendar). She also persuaded a member to make a beautifully and appropriately carved gate to the Viking base.

The group recently had an open day and were supported by a fellow Vikings group Red Ravens from Palmerston North. The RCP was there and interviewed Taylor for the Red Ravens, dressed up 'ready to fight.'

He wears a 'gambeson,' a super thick padded defensive jacket. It is all hand sewn which he did himself, saying "it is a lot of work." Then there is a metal suit of linked plates, weighing between 20 and 30 kgs.

Sometimes separate or on top is the chain mail and there are "quite a few suppliers in New Zealand. It is made of stainless steel which might not be historically correct, but it is a lot easier to clean." You can also buy the helmets with a recommended thickness of 2 ml which makes it very heavy. Some of this metal-based clothing can get expensive.

They were fighting in the club rooms, and it



Angie with another member at the specially designed gate.

looked serious stuff, but the swords are blunt, and the worst Taylor has experienced was when a sword got through and hit his unprotected thumb. It does pay to be a big person.

Being part of a Viking group attracts all types. Taylor is an IT specialist with the hospital but there are lawyers, nurses, sportspeople, the military. It also attracts different nationalities including a man from the Philippines in the local group.

Women can do a variety of roles. There are the traditional cooking, sewing, craft activities, but women also fight. Children are encouraged to be part of the group. As Angie says, "There is something for

everyone."

There is no cost to join. If it is a fine day, you will see them at the western end of Kowhai Park on a Sunday from 11 to 2, prac-

tising. You are welcome to come along and watch. They also train in archery and spear throwing but with safety always an important feature.



A typical Viking fight, displayed at the open day.

Copyright: River City Press produces and/or publishes advertisements strictly on the basis that River City Press is entitled to and owns the copyright in the advertisement so far as the copyright relates to publication or reproduction for publication in any newspaper, magazine or similar periodical or to broadcasting of the advertisement.



RELAX YOUR BODY
SALE

SAVE UP TO \$1000

It's time to float on air.

When you sit on a luxurious Stressless® recliner your whole body instinctively relaxes: it feels like you're floating on air. Try one! Because feeling is believing.

IT'S TIME FOR

Stressless®

Buy with confidence with our 30-day Money Back Guarantee*

*Conditions apply

WANGANUI FURNISHERS

BRIDGE BLOCK 33 VICTORIA AVENUE WANGANUI
CARPET SHOWROOM LOWER ST HILL ST WANGANUI
PH (06) 3454554 FX (06) 3454556
PO BOX 154 WANGANUI
email: wangafurn@xtra.co.nz



'Making every deal a big deal'

Moving times, moving values

For a FREE no obligation appraisal give Bruce a call.

Bruce McGhie
Commercial Sales Consultant
M 027 333 2587
E bruce.mcghie@pb.co.nz



pb.co.nz
Property Brokers Ltd Licensed REAA 2008

Property Brokers®

Three centenarians at New Vista Rest Home

Korean Ambassador part of Whanganui Commemoration of Korean War



The three centenarians – Ken, Francesca and Dorothy.



John (Korean War Vet), MP Steph Lewis, the Ambassador, Douglas Kim and Ron

New Vista Resthome in Harrison Street must be the place to go if you want to turn 100 and over. Currently, they have three residents — Kendall who turned 100 on 20 September, Sister Francesca, who reached the century mark in December 2022 and Dorothy, who will be 101 on 22 October. They also have another resident who will be 99 soon.

Kendall (or Ken) Rankin is the 'outlier' in that he is the only male. He was born in Palmerston North and went to school in Foxton, riding a horse to school. The family switched to Marton, where Ken was the Dux of Marton Junction and offered a scholarship to attend Whanganui Collegiate, which, unfortunately, he was unable to take up.

Ken trained as a pharmacist in Feilding, returning to work for Inglis Pharmacy in Marton and getting married. In the 1970s, he switched to running the Marton Water Treatment Plant.

He was active in the Marton community,

being a Marton Borough Councillor, along with his wife, members of the Scottish Society (Ken played the bagpipes), a member of the Marton Country Music Club and helped build the Hawkeston Golf Club between Halcombe and SH1. Later on, Ken played bowls.

After his wife died (on his 90th birthday. She was 97), he was a regular at Marton's Friendship Club and has remained an avid gardener. They lived in the home they built early on in their marriage and was still looking after himself in his mid-90s, before having to go to a

resthome during the first Covid lockdown.

Sister Francesca Bourke of the Sisters of St Joseph of the Sacred Heart grew up on a farm in Taranaki. With her sisters, she became a boarder at Sacred Heart College in Whanganui and entered the Sisters of St Joseph Congregation there in 1940.

She taught in Catholic Primary schools in Whanganui, Hastings and Feilding as well as Sacred Heart College.

From the 1960s onwards, Francesca led the community at Sacred Heart and from 1971 to 1981 was Congregational Leader of the Sisters

of St Joseph of Nazareth in Whanganui.

After her years of leadership, Francesca moved to Central Hawkes Bay where she was involved in parish pastoral work as well as doing hospital and prison visitation.

In 1988, Francesca was one of the original residents of Quinlan Court in Whanganui — a retirement complex for independent living.

Despite failing eyesight and hearing, Francesca remains interested and eager to be part of the world around her.

Dorothy Barron spent much of her early life moving around from Taranaki down to Fairlie in the South Island, as her father worked on farms. As she says, "Dad was a shifter." She was the second child out of 11 and didn't go on to secondary school, staying at home to help out. She then went to help out in another farm doing milk separation.

She married a farmer, and together they were 50/50 share milkers around Taranaki. She had seven children and was quite adept at bringing the babies with her to the cow shed.

As a member of the 7th Day Adventist Church, she has been a vegetarian, complete with a big garden. She also does not drink tea, coffee or alcohol. She attends church every Saturday without fail.

The Korean War was from 1950-1953, with troops from New Zealand involved as part of the United Nations forces fighting communist forces from the north supported by Russia and China. There is a Whanganui Korean Veterans Society, albeit with only two ex-servicemen left.

To mark the 70th anniversary of the end of the war, the Republic of Korea Ambassador Chang-sik Kim (He is also accredited to Samoa, Tonga and Cook Islands.) visited Whanganui on Wednesday 27 September to meet with Mayor Andrew Tripe and to be part of the commemorations organised by the local Whanganui Korean Society, headed by Douglas Kim.

The group also made a visit to the Queens Park Korean Veterans Memo-

rial Stone.

The commemoration featured a video of the banquet held in South Korea, attended by veterans and descendants from around the world, including from New Zealand. Ron, President of the Whanganui Korean Veterans Society, was there, thanks to the generosity of the Korean Government, which paid for business class airfares and six days of accommodation and sightseeing.

The New Zealand Governor General Dame Cindy Kiro was also there, and she featured on the video giving a speech and talking with the President of Korea. There were excerpts of the New Zealand National Anthem, sung by children, who also gave gifts to the veterans. A big banner at the banquet said — "All Our Heroes. Thank

You."

Ron said "there were 200 vets from 25 countries. Included in the trip was a visit to the UN War Cemetery where all those military people who died in the war are buried — apart from the Americans who are buried in Arlington, Washington."

The Ambassador expressed his appreciation on behalf of the Korean people "for the sacrifices of the veterans. They will be everlasting in our memories as they supported us in establishing peace and stability."

He pointed out that on 16 October there will be a Korean National Day reception in Wellington, followed by a Korean Cultural Festival, and on 17 October, there will be a Korean Food Contest. Ron added, "And it's bloody good tucker."

Celebrating our 13th Birthday

Thank you to the Whanganui Community for your wonderful support.

tasty indian
RESTAURANT & BAR
156 Victoria Avenue, Wanganui
Reservations phone 06 345 2005

Find us on Facebook

Gonville superValue
just what you need

THIS WEEK'S SPECIALS

Pork Mince **only \$7.99 kg**

All \$15 Trays Fresh Chicken **only \$10.00 each**

WEEKEND SPECIAL

only \$7.99 kg **Boneless Pork Roasts - Plain or Seasoned**

Make your own Meat Pack - Fifteen \$5 Trays only \$60

Frozen Pet Mince only \$3.99kg

PRODUCE

4kg Bags Washed Potatoes **only \$9.99 each**

Avocados **only \$1.49 each**

NEXT WEEK'S SPECIAL - STARTING 9.10.23

Frozen Lamb Loin Chops **only \$15.99 kg**

\$20 Trays Pork Steaks **1/2 price only \$10.00 each**

All items while stocks last (no rainchecks). Get in early.
47 Abbot Street, Gonville. Ph 06 344 3002
Open 7am-8pm - 7 days

THOMPSON
PLUMBING & GAS LTD

Master Plumbers

- General Maintenance Plumbing
- New Builds and Renovations
- Programmed Maintenance
- Drainage and Unblocking
- Gasfitting Service
- Hot Water Systems
- Heating
- Septic Tanks and Wastewater Systems
- Rain Water Tank Installation

06 345 0924
office@thompsonplumbing.co.nz
thompsonplumbing.co.nz

COLOURPRO
PAINTING

Interior and Exterior Fully Qualified • Free Quotes
WE PAINT SO YOU DON'T HAVE TO!
Book in for your summer projects now!!

Phone Ash Regan 027 856 1779
Email colourpropainting21@gmail.com

John Bertrand Collectables Are Buying in Whanganui & Marton Next Week

Once again, the gold and collectables buyers from Wellington company John Bertrand Limited are visiting Whanganui and Marton next week. Mr Tony Grant from the company says, "If you are downsizing or wanting to dispose of things because they no longer serve any purpose to you or your family bring them in". "Next week will be a great opportunity to have any items you want to sell assessed by our buyers" said Mr Grant. Particularly wanted are Gold and Silver (in any of its forms) and Collectables such as Coins, Banknotes, War Medals, Old Wind-up Watches and other interesting Small Collectables.

"We are keen buyers, especially of the items in the list below" said Mr Grant. "Nothing is too small for our consideration. We are just as happy buying 1 item as we are buying 1,000 items" he said. The buyers will be in convenient locations in Whanganui and Marton next week. (see details below). As Tony Grant points out "If you are in doubt about any items you may wish to sell, bring them along for an instant appraisal."



Mr Anthony (Tony) W. Grant

Fellow of the Royal Numismatic Society of New Zealand Incorporated
 Director and Buyer
 John Bertrand (Collectables) Ltd
 Author of the John Bertrand NZ Coin & Banknote Catalogue

Gold & Silver At Near Record Prices

During these uncertain times we have seen a sharp increase in the price of precious metals. The gold price in New Zealand is at near record levels so gather up all your unwanted items and take them along to the buyers. Tony Grant says "We can buy old gold items in all forms, including Jewellery (Rings, Chains, Brooches etc), Coins (Sovereigns and the like), Alluvial (River Gold), virtually anything, even Gold Teeth! We also need all Sterling Silver including Cups, Tea Services, Cutlery and Old Coins" he said.



Interesting Small Collectables Wanted

The buyers from John Bertrand (Collectables) Ltd, visiting Whanganui and Marton next week, are happy to look at any interesting items, for example vintage pocket and wristwatches such as Rolex, Men's Omega, Breitling and gold watches etc. Also wanted, pre 1950's picture postcards, Maori and Pacific artefacts, old fountain pens and other small antique or historical items.

"If you have something unusual which you would like to sell, please bring it into one of our venues, we would like the chance to at least have a look at it" said Tony Grant, buyer for the Company. "We will consider anything which may be of interest to a collector" he said.

Some Big Dollars in Early Banknotes

Early New Zealand Banknotes dated before 1932 are currently fetching big money! This is according to Mr Tony Grant, author of the *John Bertrand New Zealand Coin & Banknote Catalogue*. Mr Grant is in Whanganui and Marton next week on a buying trip for John Bertrand (Collectables) Ltd and would be very keen to see any of these issues. "We will pay at least \$300 for any undamaged Ten Shilling or One Pound

banknote from a New Zealand trading bank dated 1932 or before.

Denominations of five pounds and higher would be worth from \$700. "Any banknote dated prior to 1900 would be worth at least \$1000" said Mr Grant.

Also purchased are any Reserve Bank of New Zealand pre-decimal issues, especially 50 Pound notes. All overseas banknotes are also wanted, especially early Pacific Island issues.

Collectors Need War Medals

Currently, throughout NZ and the world there is a big demand by collectors for war medals. These cover all wars right through from the New Zealand Land Wars and the Boer War, to the First and Second World Wars and the later Korea and Vietnam conflicts. New Zealand Servicemen and Women first served overseas in the Boer War in South Africa around 1900 and the war medals awarded for this service are needed by the buyers, as are any other Medals from early New Zealand and the New Zealand Wars.

General service medals from both the First and Second World Wars will also be purchased, but as can be imagined these were awarded in fairly large numbers. "If a group of medals has any special award for bravery such as the Military Medal, Military or Flying Cross or other medals for Distinguished Conduct or Meritorious Service, these can add great value to a group" stated Mr Tony Grant, buyer for John Bertrand (Collectables) Ltd. "Many families have old medals, some dating back to early Imperial days, that they are not sure what to do with. These are better off in the hands of collectors who will look after them. We will be happy to look at any war medals whatsoever, just bring them in to venues" he said.

Old Coins Can Toss Up a Rarity

Do you have a bunch of old coins sitting around in your drawers and cupboards? You just never know what rarities may be lurking there. The advice from Tony Grant from John Bertrand (Collectables) Limited is to "bring them in and let us have a look". "No need to sort anything out just bring them in 'as is' and please don't clean them! We can go through coin accumulations and collections fairly quickly" he said. The buyers are particularly keen to buy pre 1946 New Zealand Silver Coins for at least 10 times their face value (more for quantity). "In any event we will buy All Coins," said Mr Grant.

JOHN BERTRAND (COLLECTABLES) ARE BUYING NOW!!

OLD GOLD

- Unwanted Jewellery or Broken Rings
- Gold Chains
- Gold Watch Cases
- Alluvial (River) Gold
- Dental Gold
- Gold Coins
- Gold Racing & Trophy Cups



COINS

- All Gold & Silver Coins
- Gold Sovereigns
- Gold Half Sovereigns
- NZ Silver Coins 1946 & Before (at least 10 times face value)
- Also wanted NZ & World Coins after 1946
- Australian Silver Coins to 1963
- English Silver Coins to 1946
- NZ 1935 "Waitangi Crown"
- USA Coins up to 1964
- Old Collections & Accumulations of World Coins
- Modern Collector's Coins & Sets
- NZ Reserve Bank Sets
- *No Pennies or Halfpennies Please*



GOLD & SILVER

- Racing Cups
- A&P Show Cup
- Sports Cups
- Presentation Keys & Trowels
- Show Pieces
- Sterling Silver Tea Sets
- Sterling Silver Cutlery
- Scrap Gold & Silver

No EPNS or Silver Plated items Please

WRIST & POCKET WATCHES

- Gold & Silver Pocket Watches
- Any Rolex Watches
- Omega Gents Watches
- Any Breitling, Jaeger Le Coultre, Vacheron & Constantin, Patek Philippe, or IWC Watches
- Moon Phase Watches
- Chiming or Alarm Watches (Pocket or Wrist)
- Military Watches
- Divers Watches
- All other pre 1950s wind up watches (parts value only)
- *No Quartz or Battery Operated Watches Please*



No item too small for our consideration

TOKENS

- NZ & Australian "Tradesmen's" Tokens
- NZ Transportation Tokens
- Railway Passes
- Tram Tokens (not Dunedin Tramways)
- Presbyterian Church Communion Tokens
- Bread Tokens
- Theatre, Cafe, Discount Tokens etc
- Any other tokens relating to early New Zealand

COLLECTABLES

- Albums & Accumulations of Pre 1920s Postcards (used or unused)
- Old Fountain Pens
- Maori & Pacific Artefacts



WAR MEDALS ETC

- The New Zealand Wars & Boer War Medals
- 1st World War Medals
- 2nd World War Medals, Stars etc
- Orders and Decorations
- Korea & Vietnam Medals
- Antarctic or other Polar Medals
- Fire Brigade Medals
- Lodge Medals
- Shooting Medals
- Military Badges and all other Military Medals
- Gold returning Fob Medals or "Tokens of Honour" from residents of small town New Zealand

HISTORICAL MEDALS

- A&P Show- Gold, Silver & Bronze Medals
- Commemorative Medals & Medalets
- Prize Medals (Gold & Silver)
- Sports Medals (Gold & Silver)
- Life Saving Medals
- Shipwreck Medals
- Coronation Medals
- etc, etc, etc



NO APPOINTMENT NECESSARY

Please note: If you sell anything to us, suitable ID is required. Please also bring your bank account details for the deposit of funds for larger purchases.

JOHN BERTRAND (COLLECTABLES) LTD

OUR BUYERS ARE IN YOUR AREA NEXT WEEK

WHANGANUI EAST	Wed 11 Oct	Whanganui East Baptist Church Hall, 34 Moana Street	9 am to 11 am
MARTON	Wed 11 Oct	St John Ambulance Rooms, Corner Lower Beaven Street & Wellington Road	12 noon to 1 pm
WHANGANUI	Wed 11 Oct	Christ Church Community Centre, Upper Lounge, 235 Wicksteed Street	2 pm to 4 pm
GONVILLE	Thurs 12 Oct	John Ambulance Community & Training Centre Room, (left side entrance), 25 Tawa Street	9 am to 11 am

John Bertrand The Trusted Name In Numismatics Since 1965!

WE WANT TO BUY - CASH-IN NOW



John Bertrand (Collectables) Limited
 T: 04 232 9832 • E: info@bertrand.co.nz
 Level 1 Harcourt's Building, 215 Main Road,
 Tawa, Wellington 5028
 PO Box 323, Wellington 6140



JOHN BERTRAND
 COLLECTABLES LTD

Members of the Australasian Numismatic Dealers Association and the New Zealand Numismatic Dealers Association



Māori Postal Aotearoa - sending lessons and magazine throughout NZ

Earlier this year, we had an article about Ken Forster. The focus was on how he had been seriously injured after being hit by a car while trying to cross the road along from Patapu Street in Whanganui East.

This led to the Council putting in a new footpath along Williams Domain through to Whanganui East School, plus a crossing from the school and a medium barrier in Patapu Street.

Ken and his wife Jenny had spent a number of years as superintendents for the Māori Postal Sunday School, which was based in Whanganui. It had started back in 1945 to post/deliver Sunday School lessons, mainly to children who lived in rural areas of Northland. It was supported by the Open Brethren church and others.

We thought that the operation had come to an end, but no. It is not only still alive but is also flourishing and still based in Whanganui, in Lowther Street.

Graham and Evelyn have been involved in the work since 1976 and took over as superintendents in 1982. In 2017, they were joined by daughter Charmaine and son-in-law Malachi, who are taking on more responsibility, helped by Malachi's expertise in computer technology.

Graham explains the purpose of the Māori Postal Aotearoa as "a non-profit organisation spreading fully the gospel of Jesus Christ." They do this by preparing Christian lessons, written by Graham, for young people aged 5 to 16 and more recently by also producing adult lessons. "People still like

receiving something in the mail. The lessons are available to anybody at no charge."

Previously, leaders in the community would distribute the lessons and, in the process, get to know the people one-on-one. But most aspects are time consuming, especially marking. The reality is that many members of the church are elderly, and the cost of producing and mailing is getting more and more. The alternative is to provide online lessons. Currently they have an App to provide access to most of the reading material and this is the direction they will be going.

Another development is to provide bilingual (Māori/English) comics. They are based on overseas material, but with permission to translate into Māori. Their versions are printed in New

Zealand

They are also producing bi-monthly magazines containing testimonies, relevant life issues and connections with Māori Postal Aotearoa communities throughout the country.

Evelyn produces another bi-monthly magazine, especially for young people, providing puzzles and film reviews as well as Christian messages.

Up to 5,000 copies are printed on their premises using some of the latest printing technology.

The four of them work long hours and "live by faith." Unlike most other Church officials, Open Brethren workers depend on the generosity of their supporters — that is they live by faith, with the satisfaction of meeting real spiritual needs in the community.

Pigeon racing results

The St Johns Club Wanganui Pigeon Racing Adjunct held its third race of the season with a race from Oturohanga. The race attracted 90 pigeons from 6 flyers. The winning pigeon, from the loft of Jim Pullins, covered the 192 km airline (to Whanganui) in 2hr 40min 12sec for an average speed of 1196.70 meters per minute or 71.80kph. The pigeons experienced fine weather on their flights to Whanganui and Waverley.

Results were:
 Jim Pullins (Whanganui) 1196.70mpm or 71.80kph; B and A Fairweather (Whanganui) 1183.08mpm or 70.98kph; Brent Miller (Waverley) 1182.16mpm or 70.93kph; Benedict Galanida (Whanganui) 1168.80mpm or 70.12kph; Don Lacy (Whanganui) 1168.69mpm or 70.12kph; Dave Lacy (Whanganui) 1082.48mpm or 64.95kph



HEAT PUMPS & ELECTRICAL



- ❖ Supply, installation, servicing & repairs of all types and brands of heat pumps.
- ❖ All commercial and residential electrical work: Board rewires, lighting, repair and installation of any of your electrical needs.
- ❖ Vehicle air conditioning re-gas available
- ❖ Registered Electrician

Phone 027 565 6734 ❖ email: rtheatpumps@gmail.com



Charmaine, Graham, Evelyn and Malachi

LET'S TAKE BACK OUR COUNTRY



NEW ZEALAND
FIRST

nzfirst.nz



Authorised by H Howard, 41 Jervois Road, Ponsonby



Whimsical tales of old Wanganui Shiloh wins place in NZ Ballet's performance of Hansel and Gretel

Tentative tintinnabulatory timing trials trashed

By Murray Crawford
One of our early newspaper correspondents once came up with a novel idea to harmonize the pealing of church bells. He suggested that Wanganui's various churches integrate the ringing of their bells, thereby creating "the formation of a peal of bells, composed of the tintinnabulating instruments belonging to our various places of worship." (Herald: 24 February, 1874).



Synchronising Sunday's symphony

draws the listener into the tales their terror told and concludes with the "moaning and the groaning of the bells."

"We have the deep toned fire-bell of the Scotch Church, the 'tinkling gun-barrel' of the Putiki Church, the shrill bullock bell of the Church of England and the vigorous clear alarm of the Catholic Church," the editor wrote. He noted the absence of Methodist bells, but excused the non-tintinnabulating Weslyans on the grounds that they probably imagined that they were "belled" too much.

"On a still Sunday evening the fierce contests between the rival



Churches in this respect, is the more audible and does not add to the harmony of the scene. But concentrated as a peal, we doubt if any improvement would be perceptible – the tones are not sufficiently mellow to harmonize. When the Weslyans are supplied, perhaps the effect may be more pleasing."

"Whimsical Tales of Old Wanganui" and "More Whimsical Tales of Old Wanganui" available at River City Press. All proceeds to Alzheimer's Wanganui.

The Royal New Zealand Ballet performance of Hansel and Gretel in Palmerston North's Regent Theatre on 10 November will include Shiloh, from Wanganui, as one of the dancers.

Shiloh has been learning ballet at Anna Chandulal's Wanganui Ballet and Dance Academy since she was only two and a half. She has now just turned eight.

Anna was approached by the NZ Ballet as to whether she could recommend any children who would like to audition for one of the seven "bird" roles. She suggested three, including Shiloh.

Shiloh says, "I was really nervous, but it was fun." There were 25 young dancers there for the one-hour-long audition. Once she heard that she had been accepted, "I was very happy for myself and keen to practise my part." An eighth

dancer was accepted as a backup just in case.

She has to wear a bird costume complete with the head of a bird. Her family will be there, receiving a 20% discount on ticket prices. Shiloh intends to keep up ballet training "for a long time" and is interested in one day becoming a professional dancer.

Ballet training is not an easy option. Anna says, "Once you reach grade two – normally at around age eight – you move into training twice a week and by age 11 to 12, it increases to three times a week." For those who are particularly keen, it can mean four practises a week. You have to be very dedicated and enthusiastic to succeed.

In the 15 years Ana has been teaching ballet, she has had six national scholars selected via auditions. Another student is a full-time classical



Shiloh

ballet student with the NZ School of Dance. Yet another has a part scholarship at the Chilton Ballet School in the Hutt. This is part of Chilton St James School who have ballet as part of their timetable subjects, as well as requiring training after school.

Overall, Anna has about 90 students through to those at an advanced level – around 17 to 18 years of age – and is supported by another teacher. The dance school is on the upper floor of the Brick House on St Hill Street.

Pride Wanganui recognised at NZ Rainbow Excellence Awards



Mel Fleet and Christina Emery
Alex Ryan Photo (@alexryanphoto)

Pride Wanganui, has been honoured with the Highly Commended Award in the Community and Advocacy category at the prestigious New Zealand Rainbow Excellence Awards held 27th of September in Auckland.

The New Zealand Rainbow Excellence Awards, now in its fifth year, is renowned for celebrating workplace leadership, innovation and best practice by organisations committed to rainbow diversity and inclusion.

The Highly Commended Award acknowledges Pride Wanganui's unwavering dedication to fostering an inclusive community and advocating for LGBTIQ+ rights in Wanganui through various initiatives, educational programmes, and community outreach efforts.

Christina Emery, Manager of Pride Wanganui says, "This award is a testament to the hard work and dedication of our volunteers, supporters, and community members. It motivates us to continue our mission of fostering inclusivity, understanding, and acceptance for everyone, regardless of their sexual orientation or gender identity."

Pride Wanganui not only thanks the New Zealand Rainbow Excellence Awards panel for this significant acknowledgment, but also acknowledges the support of its community partners, volunteers, and everyone who has contributed to its initiatives over the last five years.



Whanganui Ballet and Dance Academy

FREE BALLET CLASS for beginners
FREE PRESCHOOL DANCE CLASS!

Fun • Games • Music

THIS SATURDAY 7 OCTOBER

Beginners Ballet 5+ years 10 to 10.30am
Preschool Dance 3 to 5 years 11 to 11.30am



72 St Hill St
Whanganui
First floor
(above The Brick House)

Phone Anna: 027 237 9176
Email: anna@whanganuiballet.co.nz
Web: www.whanganuiballet.co.nz



Whanganui Performing Arts

HEATHERS

The Musical

TEEN EDITION

6-8 October
Royal Whanganui Opera House

Legacy medal awarded to NZ's oldest living Olympian

The New Zealand Rowing Foundation, in conjunction with Rowing New Zealand, is presenting legacy medals to all athletes who have represented New Zealand at either the Olympic Games, Commonwealth Games or Senior World Championships.

On Friday, 29 September, the Aramoho-Whanganui Rowing Club and the Whanganui Rowing Association hosted a legacy medal presentation event celebrating the life of Reginald (Reg) Douglas, New Zealand's oldest living Olympian and commemorated the legacy of four rowing athletes from the 1950s era.

"The event was an opportunity to pay tribute to the extraordinary contributions made by these former elite rowers from the 1950s and Reg Douglas, who achieved fame as a finalist in the 1956 Melbourne Olympic Rowing event," says Philippa Baker-Hogan, President of the Whanganui Rowing Association.

"Reg Douglas, at the age of 93, stands as a living testament to the enduring spirit of Olympic competition. The highlight of the event was the presentation of legacy



Ivan Sutherland (Rowing NZ Foundation), Mayor Andrew Tripe, Reg Douglas and Gerald Dwyer (Chairman, RNZ Foundation), with Reg receiving his Rowing NZ Legacy medal.

medals to the families of the four former rowers — also fellow teammates of Reg — acknowledging their remarkable achievements in the world of rowing. These medals serve as a lasting reminder of their dedication and excellence in their sport."

The event also recognised the accomplishments of Max Brown in kayaking and Chris Harris in rowing, both of whom represented New Zealand at the 2020 Tokyo Olympics. Mayor Andrew Tripe presented them

with Whisper trophies designed by local glass artist Katie Brown.

Nearly 450 rowers have represented New Zealand over the past 120 years at the Olympic Games, Commonwealth Games or Senior World Championships, and NZ Rowing has presented medals or trophies to nearly 160 of these athletes. The legacy programme is an initiative created to acknowledge and honour all elite New Zealand rowers who have competed at major international regattas.

SALE

25% off

Resene Premium Paints, Wood Stains, Primers, Sealers, Wallpaper, Decorating Accessories and Cleaning Products!

Come in and see us today!

Whanganui
Cnr Wilson & Ridgway Sts
(06) 348 0048

Resene
the paint the professionals use

or shop online at shop.resene.co.nz

Discounts off the normal retail price 4-31 October 2023 at Resene owned ColorShops and participating resellers. Paint offers also available at participating Mitre 10 MegaMitre 10 stores. Valid only with cash/credit card/EFTPOS purchases. Not available in conjunction with account sales, promotional vouchers/coupons or other offers. Excludes trade, ECS, WallPrint, wall decals, Crown products and PaintWise levy.

River City Press

email: riverscitypress@xtra.co.nz - phone 345 3666

FOR THE BEST HIRE EQUIPMENT
IN TOWN

MARQUEES • MACHINERY HIRE
PARTY HIRE & SALES

HARRISON'S
HireMaster
WANGANUI

26 CHURTON STREET PH 345 7017



SMALL CHIPPER

www.hiremastervanganui.co.nz



MAD BUTCHER

NEW ZEALAND'S
BUTCHER
Since 1971

HOW GOOD IS THIS PRICE FOR BEEF STEAK MINCE!

Beef Steak Mince \$9.99kg

UNBELIEVABLE PRICE!

Afterpay & ZIP available instore & online for home deliveries and click & collect orders - check out www.madbutcher.co.nz/wanganui/



afterpay

Specials available from Thursday 5 October to Wednesday 8 October or while stocks last

402 Victoria Avenue, Whanganui - Phone 348 0196 | This store has a full selection of Fresh NZ beef, lamb, pork & chicken at all times.

Growing congregation farewells popular reverend after 10 years of service

By Jared Smith
After nearly 11 years' service to the congregation at St James Presbyterian Church, there were not many dry eyes when Reverend Mo Morgan gave her final sermons this month.

Rev Morgan has accepted a new role as Lower North Island manager of Arocha — a Christian environmental organisation that works with churches to help them become more environmentally sustainable, taking care of God's creation on earth.

It has been quite the journey for the Whanganui mother who started as an employee of the St James, working on their community initiatives.

She then began training for the ministry and was ordained as St James' minister, a role she has held for the better part of a decade, saying, "I have been a St James for nearly ten

years, serving as an employee, then intern, then minister since 2017.

"A lot has happened in that time — among other things, the church replanted a children's ministry and youth ministry, and for three years we navigated the Covid pandemic together.

"I wore three different hats. It was all leadership, but it just took different forms," Rev Morgan said.

One of her last initiatives was recognising that as a parent, life gets very busy, so it was hard for families to commit to a faith-based community when they are trying to juggle the children and other commitments.

Being a "music mum", she reintroduced events for children into the church, such as music groups and the 'Sticky Fingers' arts and crafts alongside Kath Barrett.

"They were welcome to mixing things up a bit and more welcom-



Rev Morgan at St James Presbyterian Church

ing to families," Rev Morgan said about St James taking on the new ideas.

"I've been part of a team — there's been a

team of people who've been committed to being welcoming to people in the neighbourhood. They have done a lot to become a church that is welcoming people of all ages"

The results were impressive with more parishioners joining the church, while St James also increased its outreach in the community.

Rev Morgan gave her final service on September 10th, and it was a big event, with a strong Kapa Haka performed as well as all the church youth attending.

"Just about every musician in the church was playing," she said, agreeing the day did become a little emotional.

"Ten years is a long time — that's what you realise, but it's been a good season."

New committee elected for Club Metro

The results of the election for new members of the Club Metro committee were announced at their recent AGM. There were three new members and two existing members re-elected. The club also has a new President — Mike Neho.



At the back - Leroy Thompson (Manager), Wayne Anderson, Mac McCallion and Robert Allen (All three are RSA representatives) and John Cosford. In the front - Helen Tilley, Mike Neho, Dilly Twomey, Geraldine Tomlin and Michele Mackenzie-Smith

Meeting on setting up a Healing Room in Whanganui

The first Healing Room was set up in Spokane, USA in 1915 and they have spread around the world and more recently around New Zealand. The idea is that "anyone can come to a safe place to receive free and confidential Christian prayer for emotional, physical, and relational issues. "It is a non-judgemental environment" with the aim of bringing "the love of God into people's situations."

John Tripe was part of a group of Christians who would meet to pray for the church in Whanganui, and he and his wife Diana were aware of Healing Rooms in the country. Recently, Beth Slattery came to Whanganui, bringing with her experience of Healing Rooms.

The time was right, and so John has called a meeting asking all Christians, no matter what denomination, to come to listen to



John Tripe

speakers and to consider whether a Healing Room should be set up in Whanganui. The meeting is on Saturday, 14 October, at 12.30pm. See the attached advert for details.

"We hope people will be interested and excited about the prospect. From this meeting we will arrange a training day and check out possible venues. The Healing Room would need to have a few rooms covering a reception area, a room for discussion and another room for praying. Suitable opening times will be selected," explains John. The prayer sessions

will be free. The process is likely to be as follows: You will be welcomed and asked what your main prayer needs are, which will then be sensitively prayed for. At all times, your comfort and welfare will be top priority.

There will be a team of two or three people who will be trained and experienced Christians from a variety of Christian church backgrounds. It is open to people of all faiths, and none. Everything discussed and prayed for in the Healing Room is done in confidence.

Smarter Real Estate

Premium marketing for a fairer fee

Talia Annear

Your Real Estate Specialist

M 027 413 9337

E taliaa@arizto.co.nz

Whanganui Real Estate with Talia Annear

ARIZTO

arizto.co.nz
Licensed REAA 2008

VERY COMPETITIVE RATES

We offer

- Home Help
- Personal Care
- Sleepovers

General Home Help / Laundry/Meals
Shopping / House Cleaning / Driving
Companionship / Respite Care
Fulltime Care



"We'll give you the help that you need, and the care you deserve"



06 343 1711 or 021 045 2299
chrissycleanncare@xtra.co.nz

WHANGANUI HEALING ROOMS

Introductory meeting at Christ Church Upper Lounge - 243 Wicksteed Street Saturday 14th October at 12.30pm.

Shared lunch and light refreshments. Please bring a plate of finger food to share.

If you know God and believe JESUS is healing today, we welcome you to attend.

Rare opportunity to acquire a painting by internationally known Whanganui artist

Whanganui Walking tours - new season, new people



Murray Whitlock, Lindsay Rehm, Megan Orme-Whitlock, Erica Duggan and Norm Boothby

Whanganui Walking Tours on Saturdays and Sundays are resuming with the arrival of spring. Two new guides – Megan and Erica – have joined the team and together, the guides are looking forward to showing not only visitors but also locals, some of Whanganui's fascinating heritage stories.

Lindsay Rehm, chair of the Whanganui Walking Tours volunteers, says they are pleased with the growth in the number of people joining the walking tours. Part of that growth was due to the increase in the number of New Zealanders visiting Whanganui post-Covid.

These visitors, and those who have returned to Whanganui after having been away for some time, have been amazed at how Whanganui has developed a strong sense of identity as an arts and heritage centre. They have been keen to learn more of Whanganui's history and the stories behind events.

More recently, there have been good

numbers of international visitors, especially from Australia, Hungary, India, the USA, Canada, Norway and the UK.

Each of the guides has a long interest in the history of Whanganui and the Whanganui Region and can make the 90-minute tour a memorable experience. The tours start at the i-site, go along the riverside, across to Pākaitore, along to Tylee Cottage, up to Pukenui/Queen's Park, across Victoria Ave to Cook's Gardens and more before returning to the i-site.

The tours take place at 10am and 2pm on both Saturdays and Sundays. The cost is only \$15 per person. You can book through the Whanganui i-site either in person or by phoning 06 349 0508.

The team welcomes other volunteer guides to join them. If you are interested, check out their website www.whanganuiwalkingtours.co.nz and email whanganuiwalkingtours@gmail.com. They would love to hear from you.

sive artistic legacy.

Following her death, Bill Milbank was appointed to handle the sale of works from her extensive estate. In 2013 a book on her life's work and achievements containing a number of essays was published. Heritage Art has been fortunate in obtaining some of the remaining copies and each person who purchases a work by Joan Grehan during the current auction will also receive a free copy along with their purchase.

The auction catalogue is now open for viewing at www.HeritageArtNZ.com. This is an online auction which runs for 10 days with bidding open from 5pm Thursday, October 5. Works by Joan Grehan will be on display at Heritage Art Auctions, Heritage House, 136 St Hill Street from 2pm-4pm this coming Saturday and Sunday. Other times by appointment (027 471 2242).

Further artists whose original works are being sold in this 10-day auction



Joan Grehan 2 – A0669 Title: More Weird Than Wacky Medium: Acrylic on Board Estimate: \$200-\$300

include Isabel Field, Pat Hanly, John Drawbridge, Ian Scott, Marilyn Webb, Nugent Welch, Violet Whiteman, George Chance and numerous others. Catalogue available at www.HeritageArtNZ.com.

Following the recent closure of the WHMilbank gallery, Heritage Art Auctions is pleased to be offering some fine examples of paintings by the late Whanganui artist Joan Grehan.

Joan Grehan (nee Brodie) was born in Wanganui in 1920 and educated at the Wanganui Girls College before studying at the Canterbury College of Fine Arts. Following the Second World War she left New Zealand, first for Australia and then, in the footsteps of many earlier New Zealand artists, for London in 1954, where she undertook further study.

For the next 35 years Joan Grehan lived a nomadic life, variously in Australia, Europe, Africa and the Middle East. During this period, she held solo exhibitions in Cyprus, Kenya, France (Paris & numerous other cities), Lebanon (Beirut) and Italy (Rome) and took part in group exhibitions in France, Spain, UK, Italy and New Zealand.

In 1983 she returned to New Zealand, initially settling in the Bay of Islands and then in 1996, back in her hometown of Whanganui. On her return to New Zealand, she exhibited around the country.

Throughout her rich and colourful life, Grehan maintained a commitment to art making and at the time of her unexpected death in November 2007 she left behind an impres-

Book your advertising now in River City Press

Whanganui's largest circulating newspaper
Phone 345 3666 -
Email: rivercitypress@xtra.co.nz



BEAVER TREE SERVICE

You may have noticed the hard working team from Beaver Trees working on your neighbours trees...
Now is a great time to have all your tree maintenance taken care of, so why not take up our offer of a FREE appraisal?

Your Trusted Professionals
for over 50 years

Specialists in
Difficult Tree Removal
Full Tree Maintenance
Pruning & Thinning
Tree Reduction
Stump Grinding

A tree is a thing of beauty that adds value to your life, it's worth spending money and time on.

VOUCHER

*Conditions apply

This voucher entitles you to a FREE TREE APPRAISAL*

CALL US NOW

0800 4 BEAVER • 0800 423 283

E: office@beavertree.co.nz
WWW.BEAVERTREE.CO.NZ

OCTOBER ART AUCTION – Now Online

Our latest Art sale is now online. Almost 300 lots spanning 450 years of art and historical documents from 1570-2020. Artists whose works are for auction include Isabel Field (w/c), Pat Hanly, Ian Scott,



Isabel Field (1902) 55cm x 55cm (part view)

John Drawbridge, Marilyn Webb, Patterson Parkin, Violet Whiteman, Ebenezer Wake Cook, Dennis Taylor, Carl Laugesen, Joan Grehan and many others. Also a wide range of N.Z. and overseas photographers from 19th and early 20th Centuries. Plus two very early maps by Abraham Ortelius, John Speed and an original Tallis map of N.Z. (1852).

FREE online CATALOGUE now at:
www.HeritageArtNZ.com
When you register to receive our FREE online catalogue you will also receive a free PDF copy of the scarce first edition of *New Zealand Art Auction Records*.



Pat Hanly (1973) 54cm x 54cm

HERITAGE ART AUCTIONS



Heritage House, 136 St Hill St Whanganui. Tel. 027 471 2242
Website: www.HeritageArtNZ.com
Director: Henry Newrick
Email: Henry@HeritageArtNZ.com
Mail: P.O. Box 4085 Whanganui 4541



Spring

INTO SPRINGVALE

FLOWERING CHERRY AWANUI

A well-placed specimen tree will add much appeal to a garden. Offering spring blossom, summer shade and autumn leaf colours these are a winner!



\$10 OFF
WAS \$29.99 NOW \$69.99

MAGNIFICENT MAGNOLIAS

19 Varieties to choose from in-store and pick one of these exceptional feature trees for your garden today.



\$10 OFF

GRAFTED TOMATOES 1.3L

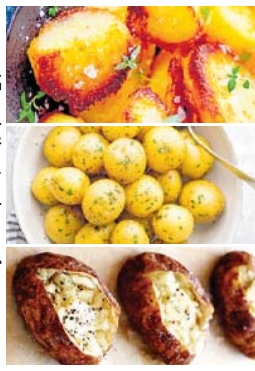
Grafted tomato plants are here! The super strong root system gives a stronger plant that grows more fruit. Varieties include: Beef Steak, Big Beef, Grosse Lisse, Money Maker, Roma, Russian Red & Sweet 100



Only \$14.99 each

TIME TO PLANT SEED POTATOES

Time to plant our certified seed potatoes now so you can be eating your own spuds for Christmas Dinner.



15 varieties to choose from.
1KG \$9.99 2KG \$13.99 MAORI \$12.99

LAVENDER MAJOR

Spectacular purple flower heads in abundance for months. Excellent for low hedges, containers and in the garden. 1.3L grade.



2 FOR \$20
OR \$11.99 EACH

HEDGES FOR SHELTER & PRIVACY

BUXUS SEMPERVIRENS

Excellent box hedging, trim to size. Can be severely trimmed and shaped. Plant 4 to 5 plants per metre for hedging. Evergreen.



5cm Pot **10 for \$45 or \$4.99 ea**
10cm Pot **10 for \$55 or \$5.99 ea**
1.3L Pot **10 for \$90 or \$9.99 ea**
6L Pot **2 for \$55 or \$29.99 ea**

GRISELINA BROADWAY MINT

NZs most popular hedge. Great for wind protection & screening neighbours. salt hardy.



10CM Pot **ONLY \$5.49 ea**
PB5 Pot **ONLY \$9.99 ea**
7.5L Pot **ONLY \$29.80 ea**
35L Pot **ONLY \$120 ea**

PHOTINIA RED ROBIN

Establishes into a highly attractive & tough hedge with red new growth. Plant at a spacing of 1-2 per metre



10cm pot **10 FOR \$55 OR \$5.99ea**
1.3L Pot **10 for \$100 or \$11.99 ea**

STYLISH TEUCRIUM HEDGE

Excellent box hedging with attractive green leaves up to 1.5 m high. Trim to size. Plant 4 plants per metre



10cm pot **10 FOR \$55 OR \$5.99ea**

ICAN TWIN PACK ZUCCHINI / CUCUMBER / CHILLI / PUMPKIN / BASIL WATERMELON / CAPSICUM

Take advantage of the super value that these two pack vegetables offer



ONLY \$4.99 per pack
That's only \$2.49 per plant!

Springvale

garden centre

18 Devon Rd, Whanganui | Ph 06 344 5846

www.springvalegardencentre.co.nz

CAFE GIFTSHOP LANDSCAPE SUPPLIES



Winners from the Great Whanganui Literary Treasure Hunt

The Great Whanganui Literary Treasure hunt was organised as a lead up to the Whanganui Literary Festival with its official launch on Friday 27

October.

The idea of a literary treasure hunt originated with 13-year-old Alexander Beitcher, who volunteers at the Castlecliff

Library. He hoped that it would not only be fun for young people but would also encourage more people to come to the library especially the Castlecliff

one.

His mother wrote all the questions, and the clues were put onto A3 sheets and stuck into windows of shops and businesses along the route of The Tide bus route between Castlecliff and Aramoho. There was one on the RCP window in Ingestre Street. To help those searching, volunteers went on The Tide bus on Saturday 16 to point out where to look. There was also free rides on The Tide.

Organising the hunt as well as the afternoon tea and prizes at the Davis Library on Wednesday, 27 September, was Castlecliff Librarian Annette Scarfe.

The clues are being left up on the windows as a great school holidays exercise. You can get an 'entry' sheet (sorry prizes have been handed out already) from one of the libraries.

Chair of the Whanganui Literary Festival Joan Rosier-Jones thought the treasure hunt was a "brilliant idea," and that they might check in on Alexander for ideas for future literary festivals.

Alexander himself thanked everyone for coming and made an advertising plug for Castlecliff Library, which "is always open and you are welcomed."

Of all the entries only six were fully correct. Five were there to receive their prizes.



From the left: Alexis aged 7, Vibbaa (5), Vivaan (9), Kaitlyn, (13) and Sophia (10)

Social media solutions for businesses - content creation workshop

How does having an entire year's worth of marketing content planned out, in advance sound?

Karla is a Whanganui local and founder of You Need Me Creative Studio. With 15+ years industry experience, specialising in Brand Strategy, Marketing and Graphic design, she has been working with business owners doing great things.

Earlier this year, Karla launched BID SOCIAL, which provides social media solutions to businesses. This was born out of a need Karla was hearing first-hand from business owners needing support, specifically with social media.

"I've seen too many business owners burnt out, struggling to wear all the hats and come up with quality marketing content day after day. I want to do something to aid this, so I thought I'd do a workshop."

Every participant (all levels welcome) will walk away with an entire year's worth of content



You Need Me Creative Studio founder, Karla

ideas to market their business. Content will be suitable for omnichannel marketing across all platforms of choice.

It is limited to just ten spots, and with just a few spaces left Karla would love to hear from anyone interested.

Saturday 14th October 9am - 12:15pm, morning tea included

Venue: Sport Whanganui Cost: \$299 inc.

Contact Karla on 0274052139 or youneed-

karla@gmail.com

www.youneedme.co.nz

www.bidsocial.co.nz

WWW.YOONEEDME.CO.NZ

creative studio

BRAND STRATEGY
MARKETING SUPPORT
GRAPHIC DESIGN

CONTENT CREATION WORKSHOP
SAT 14 OCT

WALK AWAY WITH AN ENTIRE YEARS WORTH OF CONTENT TO MARKET YOUR BUSINESS
Call 027 4052 139 to secure your spot

BID SOCIAL
PRACTICAL + PUNCHY SOCIAL MEDIA PACKAGES
WWW.BIDSOCIAL.CO.NZ

THE 2023 GENERAL ELECTION

Vote now in the General Election.

Take your EasyVote card with you and vote close to home to make voting quick and easy. Find your nearest voting place at vote.nz or call 0800 36 76 56





Proud to be Locally Owned and Operated

Buying from locally owned & operated businesses makes economic and social sense

Often we equate buying local with paying higher prices and we all want a bargain. But sometimes buying locally can be cheaper and there are some other important factors – economic, environmental and moral – which we need to consider where we choose to buy.

The economics of buying local

Buying local is buying something from a business in Whanganui that is owned by a member of our community who has decision making

control over the business and business operations. Buying from a New Zealand wide retailer as opposed to an overseas owned business also has advantages but to adapt the ultimate is buying from a local in our own community.

Research in the USA shows that compared to chain stores, locally owned businesses recycle a much larger share of their revenue back into the local economy, enriching the whole community. The figures are for every dollar spent at

independent businesses the return is three times more money to the local economy than one spent at a chain and almost 50 times more than buying from an online mega-retailer. This is because local businesses are more likely to use other local businesses for supplies, services, maintenance and repairs.

Some of the profit made by companies based in New Zealand with foreign ownership or foreign interests, end up overseas, instead of being re-invested here.

Some big businesses are able to avoid paying much tax to the New Zealand Government whereas local businesses pay their fair share.

Locally owned businesses create more jobs locally and, in some sectors, provide better wages and benefits than the chains do. Employees are generally closer to their employers and working relationships are stronger. Opportunities for practical training and development can be greater.

Sometimes we com-

plain about the increasing lack of competition with takeovers and mergers on a national or international scale. Communities need local marketplaces of many small businesses as a way to ensure innovation, competition and low prices over the long term.

Local businesses select their products, not on national sales plans and a one size fits all, but more on their own interests and the needs of their local customers, guaranteeing a much broader range of product choices.



WINDOW TINTING



ROOF RACKS

Need roof racks, luggage boxes, or a roof tray for your vehicle, come see us for a free quote to supply and install to your vehicle!



217 GUYTON ST
 Ph 345 2109
 Listen to the Future

 Shop Hours
 MON - FRI 9.00AM - 5.00PM
 SAT 9.00AM - 1.00PM
 sound. vision. soul

 AUDIO SECURITY



217 Guyton Street
Phone: 06 345 2109

Access Equipment for Hire

Forklift Repair & Servicing
Scissor Lift • Forklifts
All Your Forklift Needs

Forklift Tyres & Parts, Hydraulic Hose & Fittings.

388 Heads Road, Wanganui • Ph 06 344 7051
0800 FORKTRUCK • admin@forkliftsupplies.co.nz

Our Scissor Lift

~ HOURS ~
MON-FRI: 8AM-3PM
SAT-SUN: 8.30AM-3.30PM

Cnr Dublin & Pitt Sts, Wanganui. Ph 345 0083
www.yellowhousecafe.co.nz

Find us on Facebook

'Its Where Your Pets Would Shop'

GREAT PARKING
GREAT ADVICE
from your local pet supplies

35 Somme Parade, Wanganui. Ph (06) 349 0488
Monday - Friday, 8am - 6pm Saturday, 9am - 4pm

5-9 Church Place, Wanganui
06 345 4663
Manager
Scott Morpeth
027 233 4875

OCTOBER SPECIAL

\$20 off retail price on

- Tux Energy 25kg
- Tux Country 25kg
- Tux Energy Extra 20kg



Proud to be
Locally Owned and Operated

Why buy from locally owned and operated businesses?

The most important reason, from a community perspective, to buy from locally owned and operated businesses, is that it keeps money and jobs in the town. Compared to other businesses, locally owned ones recycle a much larger share of their revenue back into the local economy. They are more likely to support other locally owned businesses, being able to make decisions without referring to head office in Auckland or elsewhere.

Locally owned businesses are generally more distinctive and in the age of globalization, it is important that we support our one-of-a-kind operations. Shops are more likely to sell locally produced goods, rather than the mass produced, albeit cheap, but standardised items from overseas.

They normally operate out of small shops or

factories, which require comparatively little infrastructure. They are more likely to be found along the main streets, as in Victoria Ave or in suburbs, close to where people live and work.

The presence of a variety of locally owned and operated businesses keeps everyone 'honest' with down-to-earth competition. They know that they are directly responsible to their customers rather than out-of-town business managers. Good, friendly customer service becomes a necessary feature of the business, once you know them as individuals.

We probably don't need campaigns to convince us of the logic of buying from locally owned and operated businesses. It just makes good economic and social sense.

"YOU CAN'T BUY
HAPPINESS
BUT YOU CAN BUY
LOCAL
AND THAT'S KIND OF THE SAME"

- UNKNOWN

HOLLANDAUTOMOTIVE
Drive with Confidence

FREE WOF
when you roll a double 1 with the dice at time of payment otherwise \$50

- AUTOMOTIVE REPAIRS
- SERVICING • TYRES

Phone 06 777 3052 141 London St, Whanganui
 info@hollandauto.co.nz www.hollandauto.co.nz

Find us on Facebook

RUBY & FRENCH

Proud to be
Locally Owned and Operated

57A Victoria Ave, Whanganui • 06 213 4905
gillian@rubyandfrench.co.nz

Stay ahead at Kip McGrath.

FINISH THE YEAR STRONG

Kip McGrath™
EDUCATIONCENTRES

Boost your child's success, self esteem and confidence in English and maths with a personalised learning programme

At Kip McGrath, our focus is to help your child reach their full potential.

We make learning fun and engaging to improve results. You will receive progress reports and updates to track your child's improvement.

English and Maths Tuition In Centre Online

Book a **free** assessment today

Suite 1, 236 Victoria Avenue, Whanganui
Phone 06 348 0035 www.kipmcgrath.co.nz

Nail Perfection meets Lash Elegance!

Enjoy the best of both worlds with our exclusive offer...

Nail appointments come with a **10% Discount** on eyelash extensions and Lash appointments get **10% Discount** on nail services!

BOOK NOW

136 Victoria Ave,
Phone 06 347 2909

America's Nails
Lashes - brows

THE BEST PLACE FOR NAILS

Magnolia Minerals
where nature and spirit meet

- Crystals
- Natural Skin Care
- Aromatherapy Products
- Health Books
- Jewellery

152 VICTORIA AVENUE (cnr Guyton Street)
www.magnoliaminerals.co.nz

Real Estate with Steven & Jared

“Brothers in Real Estate”



We are changing to meet the changing times in Whanganui real estate

Steven and Jared are proud to announce their new business venture as a real estate sales team with Arizto Whanganui and South Taranaki.

Motivated by discussions with their clients of what they are looking for in real estate service, and wanting to remain on the cutting edge of providing that service, the pair have joined the team which has made significant strides since they entered the local market in 2020.

Why us?

Bringing together experience in over 500 property transactions from Whanganui to South Taranaki, Steven and Jared are a “two for one” deal with two salespeople working together and continue to get local properties sold.

With in-depth market knowledge and a strong work ethic, they will always make time to meet at your convenience and discuss the marketing campaign and plans to sell your property in a timely fashion.

They both believe in top level service and bringing owners the best options to get sold in current conditions, and so they cannot wait to show you the high quality service you will get with Arizto from pre-listing market appraisals, pre-sale advice, your own finger-tip control of digital platforms, and their own unique abilities with professional scripts and a superior understanding of real estate law.

Their clients can still access a full suite of real estate mediums for less.

Why now?

Simple, how real estate business is conducted in Whanganui is so important, now more than ever, to meet a changing market.

After the phenomenal rise of sale prices in 2020-21, the market has gone through a significant adjustment period, one that you need experienced and hard working salespeople to understand.

Open home attendance and buyer enquiries increased in July 2023, which suggests renewed Spring interest in shifting houses – indeed, owner-occupiers are the most active buyers, along with an increasing number of

first-home buyers returning to the market. Our population is growing well above the national average, so there are people who want to buy your home, but the price they are able or willing to pay is a delicate negotiation – the median price for Manawatū/Whanganui decreased by 4% to \$557,000, year-on-year for July.

Therefore, Steven and Jared are determined to provide you with the most practical advice to improve the chances of your property selling.

Joining the Arizto brand with its near-instantly available information, focused buyer campaigns and great value on fees will

allow them to provide you with a tailor-made plan to find not just any buyer, but the right buyer in a happy medium – you selling and moving on with life, and the new homeowner settling right in.

Why are we your team?

Steven Schwamm has just been named by Arizto as the Regional Support Manager for Manawatū, Rangitikei, Whanganui, and South Taranaki.

He takes on the key role of assisting the ambitious Arizto team perform their tasks and bring better value service to their clients.

After well over a decade in the industry, Steven self-qualified with a Real Estate Diploma and Branch Manager’s Certificate, making him one of the youngest licensees within Arizto to hold an Agency license, while also Associate of the Real Estate Institute NZ (AREINZ).

Still an active selling agent alongside Jared, Steven is not in any ivory tower and has his finger firmly on the pulse of what is happening in today’s market.

However complicated the scenario or delicate the negotiation, he has the ability to bring it together in the most efficient and stress-free way possible.

Helping build this brand for the future is Jared Smith who will also use his unique scribe abilities as Content Writer for the entire Arizto brand.

An experienced professional writer who has worked in media across the country, Jared is proud to promote Arizto’s success as a young real estate company and its vast array of team members, nation-wide.

Getting his Bachelor of Arts at Canterbury University, followed by his Graduate Diploma in Journalism at Massey (Wellington campus), Jared became a seasoned worker through journalism/editing roles throughout the

country, before settling in Whanganui and qualifying for his NZ Certificate, Real Estate Salesperson.

He will provides quality marketing scripts to increase interest in your property, as uses his rapport with buyers and sellers to provide service they value.

As a duo using streamlined processes, Steven and Jared embrace the use of technology to help with your next property decision.

Steven Schwamm AREINZ & Jared Smith - 0800 176 4321

✉ stevenandjared@arizto.co.nz

📍 Real Estate Whanganui

Licensed Salespeople (REAA 2008)



arizto.co.nz Smarter Real Estate



CONVEYANCING | TRUSTS | WILLS | FAMILY

FREEPHONE 0800 TREADWELL
Phone 06 349 0555
www.treadwellgordon.co.nz

WHANGANUI | TAIHAPE | MARTON | FEILDING | OHAKUNE | WAVERLEY

Celebrating **76 YEARS**
1947 - 2023

- 3rd generation family business
- We grow our own vegetable and bedding plants
- Local stockists of Matthews Roses
- FREE delivery within city limits
- Plenty of off street parking



wanganuigardencentre@gmail.com
95A Gonville Ave, Wanganui.
Phone 06 344 4561

Open 7 Days, 8.30am - 5pm
Plenty of parking available Find us on Facebook

Exhibition opening at Eightyeight Putiki

By Staff Reporter
Local artists Helene Hall and Katie Hedgman-Dalton are teaming up to exhibit new works from their individual studios this October at Eightyeight Putiki.

In a press release, Hall's new body of work features "exquisite gouache paintings of New Zealand butterflies" and will be accompanied by the launch of her 2024 calendar.

A graphic designer by day, Hall works across many mediums — digital, mixed media and gouache painting — and features butterflies in her colourful stationery line.

"[But] the physical act of brushing paint onto pa-

per has evolved these into real pieces," she said.

Hedgman-Dalton's mixed media pieces — referred to by her as "bookery" — will be her contribution in the dual show.

"She combines her love of stitch, texture and text in a scattering of hand-made books that beg to be touched and explored," the release states.

"I've included a favourite poem by Kahlil Gibran and some of my own writing, to accompany the visual and tactile narrative" said Hedgman-Dalton.

"It's going to be a show of extremes," she adds.

"Helene's deliberate brushwork and use of

colour, and my [almost] chaotic marks and more sombre palette are a bit of a contrast. And we both look forward to sharing it with you."

The exhibition will run for four weeks.

Eightyeight Putiki at 88 Putiki Drive

Opening night is Thursday, October 12, from 5.30pm-7pm at Eightyeight Putiki - 88 Putiki Drive, Whanganui.



Rutherford Junior High invite parents to come to constructive meetings

On Thursday, the 26th of October, Rutherford Junior High School invites their community to join them for a hui to understand what their community wants for their kura. There will be two hui sessions: one at 3.15pm and one at 6.15pm. Light refreshments will be provided as will childcare for the 3.15pm session. Schools are committed to listening to their community, so please do make your constructive voices heard.

WORLD TEACHERS' DAY

THURSDAY 5 OCTOBER

Expressions of gratitude go a long way *Strengthen the parent/teacher relationships*



Over 100 countries celebrate World Teachers' Day with most but not all choosing October 5 as the day. The event recognizes the critical role that teachers play in shaping the future of our world. In 2023, the theme for the day is "The teachers we need for the education we want: The global imperative to reverse the teacher shortage".

Past themes have included Teacher Empowerment (2017) and The Transformation of Education Begins With Teachers (2022).

This year's celebrations aim to highlight the importance of stopping the decline in the number of teachers and then starting to increase that number at the top of the global agenda.

While this is definitely a day to show teacher appreciation, it's also a time to consider bigger issues related to teaching and education.

Schools and communities can (and should) take several approaches to celebrating World Teachers Day 2023. First, spend the day appreciating teachers, publicly and privately, for their hard work. As this days is part of the school holidays, you might have to wait till the following week.

Thanks and expressions of gratitude can go a long way and will be appreciated.

However, while appreciation gifts and thank-you notes are lovely, teachers also need recognition of the issues they face, financial and administrative support of their actions, and respect for their skill and expertise.

Teachers are the unsung heroes of our society, tirelessly dedicating themselves to shaping the minds of the next generation. As we celebrate World Teachers' Day on the 5th of October, let us not forget the vital role that parents play in this educational journey. The collaboration between teachers and parents is not just an option; it's an essential component of a child's success. One essential aspect that often gets overlooked in the education system is the importance of teacher and parent collaboration.

The teacher-parent partnership is one that can significantly impact a child's educational journey. It involves teachers and parents working together to create a supportive and enriching learning environment for the student.

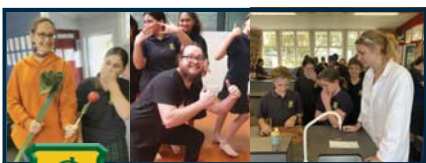
When teachers and parents collaborate, they can identify strengths and opportunities that exist within a school. This enables a school to tailor their approach to meet the student community's specific needs. At an individual level, teachers can provide targeted support in areas where a student may be

struggling, while parents can reinforce these efforts at home. The result is often improved academic performance and a more confident, motivated learning community.

Education is not just about academic achievement; it's also about nurturing well-rounded individuals. Teachers and parents working together can ensure that their child's education includes not only subjects like mathematics and science but also life skills, values, and character development relevant to the lives of Whanganui students.

On this World Teachers' Day, let's not only celebrate our teachers but also pledge to strengthen the teacher-parent partnership.

- Supplied by Rutherford Junior High



SUPPORTING WORLD TEACHERS' DAY

WHANGANUI INTERMEDIATE

ENROL NOW FOR 2024!

Enrolment forms can be downloaded from www.wi.school.nz or phone into the school office on 06 349 0231.



WESTMERE SCHOOL

Proud to support **World Teachers' Day**

Piki Ake Te Poutama
Building Future Leaders Today


Phone 345 6919
cnr Francis & Rapanui Road, Whanganui



Rutherford Junior High
"Learn to live, live to learn"
"E ako ki te ora, e ora ki te ako"

Proudly supporting
World Teachers' Day

32 Toi Street, Whanganui
Ph 06 349 0022 • office@rutherford.ac.nz



Proud to support World Teachers' Day

Ph 06 344 4537
Polson Street, Castlecliff



Carlton School
proud of our Kaiako and all they do.

He kōtuinga mahi iti, he hua pai-ā rau
Small ripples create big waves

Phone 06 345 0336
99A Carlton Avenue, Wanganui



KAI IWI SCHOOL
to be the best we can be

We are proud to support our awesome teachers and **World Teachers' Day**

RD4, Whanganui.
Phone 06 342 9823

JOIN US FOR AGC
 TRAINING'S
OPEN DAYS



Come and visit our Whanganui campus at one of our open events, providing an opportunity to bust the Myth of WHO – AGC Training is and What we do as an organisation, in our local community!

Training Programmes for 2024 have been profiled, and provide an opportunity for people to visit our Campus over the next 10 weeks to view first-hand what we have to offer them. Guided tours and interaction with staff are available for those who are involved in the delivery of our programmes.

Or scan QR code
 to register



**REGISTER
 HERE**

📞 0800 3488215
 ✉ info@agctraining.co.nz
 🖱 www.agctraining.co.nz

OPEN DAYS

Are you curious about what AGC Training has to offer in 2024?

Don't miss our Campus Open Events over the next 10 weeks!

We're here to show you why we are the "Best Kept Secret in Whanganui/Okoiā."

- 🌾 Agriculture Level 3 Dairy - 40 Weeks
- 🔨 Carpentry Level 3 - 40 Weeks
- 🐾 Animal Care Level 3 - 26 Weeks
- 🐄 Rural Animal Technician Level 5 - 40 Weeks
- 🏫 Education to Employment In-School Support Programs
- 🚗 Driver Licensing Support

First run of dates -

📅 When: Mon 9th Oct / Tues 17th Oct / Wed 25th Oct / Thurs 2nd Nov / Sat 13th Nov

📍 Where: AGC Training Campus - 312 Number 3 Line, Okoiā 4582

**REGISTER
HERE**

📞 0800 3488215

✉ info@agctraining.co.nz

🖱 www.agctraining.co.nz

Campus Open Event #1



Guided Campus Tours

Interaction with our dedicated staff
Chauffeur-driven tours to our campus sites

- Main Office
- Carpentry Site
- Milking Shed
- Static Machinery Display
- Animals in the House Paddock
- + Sausage Sizzle and Farm-Fresh Milk Sampling

One-off guitar to be sold for charity

Local guitar maker Mike Collins had promised some time ago to make a special guitar for Craig Cawley of the Gatsback. The two recently met at the funeral for jazz player Angela Crawford, and Mike told Craig that the guitar was ready.

It is described as "a beautifully crafted instrument made from local hardwoods." It is a one-off made here in Whanganui.

The idea was for it to be sold and the proceeds to go to MS (multiple sclerosis). Craig was so impressed with it, that he offered to buy it and donate the money.

Instead, Mike made a second guitar as a gift for Craig and the first one is now for sale in the window of Gatsback for \$1200, with the proceeds to go to MS. Craig says, "I was so touched with what Mike did that I cried."



The guitar for sale.



Fijian Language Week

October 8 - 14

Useful words and expressions to learn

At the back Senimelia, Screana, Steliorina, Motea and Alani-eta. In the front Ezra, Nemesio, Isla. (Other Fijian students were away as it was in the holidays)



Fiji Language Week celebrates the culture and language of Fiji. In 2023, Fiji Language Week starts Sunday, 8 October and finishes Saturday 14 October.

There are three official languages in Fiji: English, Fijian and Hindi (Although it is a dialect much different from what is spoken in India.). Native Fijians speak Fijian as their first language, Indo-Fijians speak Hindi as their first language, and both groups speak English as a second language.

Fiji Language Week celebrates the native Fijian language.

Here are some useful words and expressions.

1. How do Fijian say hello? Bula: Pronounced 'boo-lah', it is by far the most common greeting.

2. How to respond? The response for this would be to just say 'bula' back while keeping to the same level of genuineness and enthusiasm.

3. How do you say goodbye? 'Moce' is how you say goodbye. Your new Fijian friends may say "Vanuinui vinaka e nomu volau," which means bon voyage,

or have a good journey.

4. How do you say please? 'Kerekere'. Fijians are very courteous so it's important to use proper manners.

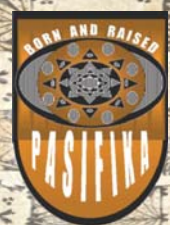
5. How do you say sorry? If you want to apologise, you can say vosoti au (pronounced 'voe-sah-tee ow'), which translates to 'I'm sorry' or 'pardon me'.

6. How do you show respect in Fiji?

It is best to sit cross-legged looking down out of respect. If you are joining company, shake hands with everyone who is already present and introduce yourself. There may be a welcome ceremony to the village. This involves drinking kava with the chief.

In Whanganui Born and Raised Pasifika will be creating a wellbeing garden track on their property in Aramoho on Friday 13 October, and planting the area with fruit trees, harekeke and other rongoā rākau (Māori medicinal plants). They are being assisted by Dave Hutchinson of Whanganui Healthy Families.

Afterwards they will be celebrating Fiji Language Day with a shared meal of Fijian food.



Born and Raised Pasifika

Aramoho Centre phone (06) 343 5441
bornandraisedpasifika@xtra.co.nz

Tawhero Centre phone 344 7471
pasifikalearningcentre@yahoo.com

Born and Raised Pasifika

Early Childhood Centre
2 Mitchell Street, Aramoho

and

Pasifika Learning Centre

27 Totara Street, Tawhero

are proud to support



Fijian Language Week

OUTDOOR FUN and ACTIVITIES

Book in to protect the Tongariro Alpine Crossing

The Department of Conservation is introducing a free booking system for the upcoming

Tongariro Alpine Crossing season and encouraging all visitors to book in advance.

The system is now live for bookings from 14 October onwards.

Ngāti Hikairo ki Tongariro and DOC want to ensure the experience of walking the Crossing protects the fragile environment, respects the cultural significance of the area, and is safe and sustainable.

DOC Director Heritage and Visitors Catherine Wilson, says visitor numbers on the Crossing are putting consistent pressure on the conservation and cultural values of the area, as well as the infrastructure.

DOC will be making changes to the Tongariro Alpine Crossing in the coming years, aiming to better manage the pressures and strengthening cultural and heritage values of the area.

By proactively manag-



Tongariro Alpine Crossing

ing the challenges facing the Tongariro Alpine Crossing, New Zealanders will help protect Tongariro for future generations.

Bookings from the season will inform the management of the Crossing and visitor information and feedback will help us shape future improvements says Catherine Wilson.

Ngāti Hikairo ki Tongariro spokesperson Te Ngahe Wanikau, says the spiritual, cultural and

physical wellbeing of the maunga and its environment are paramount.

Everything else fits into that. Our enduring advocacy is that rangatiratanga, manaakitanga, kaitiakitanga and the associate tika of Manaaki Tangata Manaaki Whenua will be reflected in the physical application in management and operations.

Any action or activity within the area will be based firmly in these values says Te Ngahe

Wanikau.

Tongariro National Park has Dual World Heritage status for its cultural and natural heritage values.

Although bookings are highly encouraged, they are not compulsory. Visitors who turn up at the Crossing without a booking will not be penalised.

Visitors who have a Tongariro Northern Circuit hut or campsite booking are exempt from booking through the new system.



Package deals, Solo Aircraft Hire and Instructor Hire.
See our website for more information.

COME FLYING WITH US!

THE SKY IS NOT THE LIMIT!

Experience flying with our introductory trial flight
from only \$220 or for \$240 bring two friends!

Ph: 06 345 0914 www.wanganuiaeroclub.co.nz

OUTDOOR FUN and ACTIVITIES

Trial flight or training packages at Wanganui Aero Club

The Wanganui Aero Club has over 80 years' experience training

recreational and commercial pilots. The club has a very

active social scene with regular 'fly away' trips to locations all around

New Zealand, weekly get-togethers at their club rooms and partici-

pate widely in local and national sports and aviation competitions.

The club is open 7 days a week including school holidays. You can book a trial flight which gives you hands on experience. Gift vouchers also available.

Refer to advert for more information.

Come and enjoy a trial flight over Wanganui



Lions Club legacy continues with Tot Town Railway

- Stewart Kelly, President

The Tot Town Railway is the signature project of the Lions Club of Wanganui since 1963. Yes, a total of 60 years and still serving the public. The President of Lions International from the USA officiated the opening.

We have two trains; the original was built only two years after our Club was chartered by the workers at the then Railway Workshops Aramoho Plant Zone. This train was retired in 2007 but still operational and replaced with the current one thanks to a generous donation by Powerco Trust.

Lions members volunteer to run the train every weekend and school holidays (weather permitting), providing family entertainment for locals and visitors alike. They also run the ride-on Beetles.

The benefits of the Tot Town Railway to the community is seen in a number of ways. Firstly, the look of enjoyment on

the faces of all generations who ride the rails. Secondly, we have a small shop providing sweets, ice creams and cold drinks to the public staffed by local young students. They are part of our Youth Development programme and are taught the skills associated with customer relations, stock management and EFT-POS transactions.

All the profits are

returned to the public to organizations rather than individuals. We currently support UCOL Scholarships, Riding for the Disabled, Koha Shed, the City Mission, Youth Speech Contests, Whanganui-Rangitikei-Waimarino Cancer Society, Camp Quality Luncheons, Salvation Army and the Starship Hospital to name a few.

Kowhai Park stands as a

testimony to the goodwill, enthusiasm and forward thinking of various Service Clubs, Councils, citizens and indeed the benefactors during the late 1950s.

This ethos stands true today as the community gets together for working bees, repairs, and maintenance. They welcome new members. For further information contact 027 4473851.



Long serving Lions Club member, Jim Ennis, with the two locomotives

GOLF



WANGANUI GOLF CLUB
BELMONT LINKS 1894

FRIDAY TWILIGHT

FRIDAY NIGHT - FUN TWILIGHT - 8 HOLES MIXED FORMATS - something for every golfer.

Due to our Thursday Business House being full, we have created another night of Golfing fun.

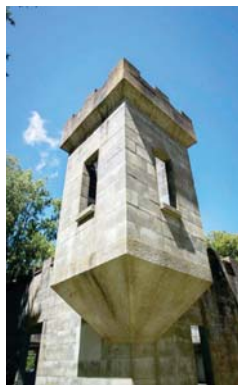
4 Person Team

\$30 Per Team - Each Friday 5.30pm start

STARTS FRIDAY 27TH OCTOBER - REGISTER NOW!

☎ 06 349 0559

✉ office@wanganuigolfclub.co.nz



Wanganui Lions

Lions volunteers established and have been running the Kowhai Park Tot Town Railway since 1963.

All money raised benefits added features and upgrades to this wonderful Wanganui asset.

Local photographers' showcase best work for exhibition

From the creative to the documentary, Whanganui photogra-

phers will be showcasing their best work at the upcoming annual

Whanganui Camera Club exhibition. The Exhibition, which opens

on Saturday, 7 October and runs till Saturday, 14 October at the Community Arts Centre, Taupo Quay, is a chance for the public to see some of the best of Club members' photography from the past year.

The main Front Gallery will feature the ever-popular classic framed prints in colour and monochrome, while the Centre's Back Gallery will feature Photo Art - Outside the Square — works that showcase creative, multidimensional imagery.

Another highlight will be the feature wall "Whanganui is people ... he tangata, he tangata, he tangata" — a giant collage of black and white images of Whanganui folk going about their ordinary —

Whanganui Camera Club patron Beverley Sinclair and exhibition organiser Heather Mackenzie selecting images for the feature wall.
Photo credit: Lynette Valley



and not-so-ordinary — daily lives.

Entry to the Exhibition is free, and all are welcome. Opening hours are Saturday 7 & 14 October 9am-2pm and Sunday 8th – Friday 13th 10am-2pm.

For more information about the Whanganui Camera Club visit www.whanganuicameraclub.org.nz.

Steph Lewis

MP for Whanganui

Keep in touch

steph.lewismp@parliament.govt.nz

Labour.org.nz/stephlewis

Whanganui office: 06 348 1010

Hāwera office: 06 278 2180

[/stephlewiswhanganui](https://www.facebook.com/stephlewiswhanganui)

[/stephlewislabourwhanganui](https://www.instagram.com/stephlewislabourwhanganui)



Authorised by Steph Lewis MP, Parliament Buildings, Wellington



Calling all motorcycle riders

Come along for:
Maintenance checks with a mechanic
Yummy Free BBQ
Free Coffee
Giveaways and more!

Marshall Motorcycles
143 Ridgway St, Whanganui

Sunday 14 October
9am - 12pm

CELEBRATE MOTORCYCLE AWARENESS MONTH



Musicians Club night celebrates the changing season



Blue Veinz vocalist, Darren Ahern
Photo by Gail Imhoff

The Blue Veinz, Anny's Jam Band, Ngāti Skank, Razor and the Blades, Wireless, Heti & Hope ... the list of local bands playing on the stage goes on and on. The Musician Club reaches out into the community to support musical talent in Whanganui. Once a month, on the first Friday, the club provides an environment for our musicians to interact with a supportive audience. The members of the club congregate to enjoy an evening of good cheer where cooperation trumps competition and everyone wins. Well, that's the idea.

If you have never been to a Musicians Club Night, now is the time to come down to the hall on Drews Ave and join the party. This month is a celebration of changing seasons, with spring and summer in the air. It is a callout to local bands and solo performers to come down and put your name on the board and perform. It is a callout to music lovers to come down and participate with a community of Whanganui musos who are keeping music live.

The club's motto, "It's all about the music" can be translated to "It's all about having a good time". Bring your own food and drink, and bring the children. Doors open at 7pm. We look forward to welcoming you.

Friday 6 October, 7pm @ Whanganui Musicians Club, 65 Drews Ave

General Admission \$15, Members \$10

River City Press
Positive story ideas and advertising most welcome

Fully viewable online at www.rivercitypress.co.nz and on our Facebook page. Phone us on 345 3666 or email rivercitypress@xtra.co.nz

Comedy stage show - 'Ladies Night' coming to Whanganui

Ladies Night, the stage show about five down-on-their-luck Kiwi blokes who have a light-bulb moment to get into shape and become strippers, promises to be this year's funniest night out. It is currently on tour around New Zealand and will be in Whanganui at the Royal Whanganui Opera House on Sunday 15 October at 7.30pm.

You will recognize many of the actors from television. Considered by some to be New Zealand's hottest actor, Mike Edward (Shortland Street, Power Rangers, The Brokenwood Mysteries, Spartacus) will play head stripper Barry — a V8-driving, bass-playing man-child who hasn't abandoned certain adolescent urges.

Well-known comedian Mark Wright (That Comedy Show, Comedy Central, Shark In The Park, The Billy T James Show, Shortland Street, Power Rangers) is back at what he does best — making people laugh — as Bernie, the aging, sleazy nightclub owner.

Step Dave star Jono Kenyon (My Life Is Murder, 800 Words, Go Girls, The Hobbit) will play the hustler Craig while Andrew Ford (Shortland Street, The Pickle King, Jeeves and Wooster) plays witty hospital orderly Gavin. Former Commonwealth Games gymnast turned actor Reid McGowan (Power Rangers) will play nervous Norman while Dion Murphy (The Strip) plays Wes, a commercial cleaner whose large Samoan family and

church background affect all his major decisions.

Completing this stellar cast is Frith Horan (The Brokenwood Mysteries, Hillary) playing professional dancer and stripper Glenda.

A spur-of-the-moment idea to put on a strip show rapidly becomes a reality as the venue is booked and the seats sold. With the terrifying prospect of actually having to strip in front of the public only moments away, Craig, Barry, Norm, Wes and Gavin set about transforming themselves from beer belly to Six Pack.

Written in 1987 by Anthony McCarten and Stephen Sinclair, Ladies Night was a global theatrical hit. The precursor to stage hits like Magic Mike starring hunky Channing Tatum, LA-



Ladies Night stage show promises to be "funniest night out"

DIES NIGHT has been translated into 16 languages and remains New Zealand's most commer-

cially successful play of all time. After eight sell-out tours of Britain, it went on to win The Molière Prize, France's premiere theatre award for comedy, in 2001.

Ticket giveaway

The RCP has a double pass to Ladies Night to give away to one of our readers in a draw. All you have to do is to email rivercitypress@xtra.co.nz putting Ladies Night into the subject line and giving us your name and daytime phone number. Alternatively you could bring this information into our office at 52 Ingestre Street.

The draw will be made at noon on Tuesday, October 10.

Home energy advice at Tea and Topics event

The next Tea and Topics talk at Gonville Library features Nelson Lebo, a leader in New Zealand's permaculture movement and co-founder of the Eco School.

It will take place on Tuesday, 12 October. It starts with a hot drink and a biscuit served at 10am through to 10.30am when the presentation will begin.

Nelson Lebo has been working in the areas of energy efficiency, home design, and retrofit/renovation for over a decade. He has consulted with over 2,000 households and is regularly contacted by New Zealand media to comment on issues of housing and sustainability.

After working in Palmerston North as an Eco Design Advisor — recognized as New Zealand's experts in eco-home design and renovation — he is now providing free home energy advice in Whanganui through two non-profit programmes.

Nelson will speak on the key aspects of creating a warm, dry, and



The House Doctor - Nelson Lebo

energy efficient home. Topics include the right amounts of insulation, high-performance windows, moisture management, the best window treatments, dealing with damp sections and getting the most from heaters.

Better late than Never

VICTORIA DENTAL

Make an appointment today

06 345 3222

Victoria House
1a Rutland Street, Wanganui

A VERY BRASS BAND CONCERT

15 OCTOBER | 3PM
JANE WINSTONE CHAPEL

TICKETS \$20 | U13 FREE
CASH DOOR SALES ONLY

Brass Whanganui

Whanganui hosts Lower North Island U13 Hockey Festival

Learn to sail coaching days



Hawkes Bay White playing Wellington 1.



Sailing on the Whanganui River

The annual under 13 Girls Hockey Festival was run at the McDonalds Whanganui Hockey turf at 80 Alma Road from Sunday to Tuesday, October 1 to 3. There were 23 teams involved with four teams each from the Wairarapa, Wellington and Taranaki, three teams from the Manawatu, two teams each from Whanganui, Poverty Bay, and the Hawkes Bay and one team each from Central Hawkes Bay and Horowhenua.

"The weather was a real mixture," Organiser Rochelle Booth said, with a beautiful day on the Sunday, a good Monday, until 3.30pm when the rain briefly flooded the turf and an overcast, windy, cold Tuesday."

"The main focus," she explained, "was to develop playing skills, encourage friendships and promote their interest in continuing in hockey." It was also an opportunity for the junior umpires to gain experience, while being mentored by senior umpires.

The Whanganui teams were named the Whanganui Kookaburras and the Whanganui Mazon. The players had attended a 6-week development programme back in June

before returning to play for their schools. They came back in September, where they were put into two teams while continuing to train together.

The games are 7-a-side, with the team consisting of 8 to 11 players. Along with coaches, manag-

ers and supporters, there would have been over 300 involved.

There have been other age group festivals. The Under 15 boys went to Stratford and the Under 15 girls played at Carterton, where "they went through unbeaten."

Squash results

Rivercity Squash Club Champions 2023

Mens Masters: Brendon Davies **Womens Masters:** Lisa King **Mens Doubles:** Bryan Stent/Matt Ratcliffe **Womens Doubles:** Trin McCarthy/Sarah Davies **Mixed Doubles:** Sarah Davies/Matt Ratcliffe **Mens F Grade:** Danny Downman **Womens E Grade:** Shannon Crombie **Mens E Grade:** Nigel Irwin **Womens D Grade:** Lisa King **Mens D Grade:** Eli Flemming **Womens C Grade:** Renee Rogers **Mens C Grade:** Brendon Davies **Womens Open Grade:** Sarah Davies **Mens Open Grade:** Matt Ratcliffe **Most Improved:** Brianna Arthur **Fair Play:** Lisa King

Anyone interested in finding out more about playing Squash please contact the Club Captains – Julie – Ph 0276011897 or Paul 027 224 6305

There is nothing better than having a hobby that you enjoy and adding some competition into the mix, if you wish. Competition can make sailing even more enjoyable. Do you like the water and want to enjoy it, appreciate it, and feel it in a different way?

The Whanganui Sailing Club has been around for over 140 years. The club has great facilities and best of all our river estuary provides some of the best, most enjoyable sailing conditions in the country. Whanganui sailors benefit from the great westerly winds from offshore but also the protection inside the estuary from the sea swells.

Sailing is really enjoyable. Once you learn how to make a boat move using the power of wind, you can head out for a casual sail with friends or take part in racing. It doesn't need to be scary. Everyone started somewhere, and if you keep at it, you will gain confidence and skills to tackle all sailing conditions.

The sailing season runs from September to April each year, with club racing on most Sundays (once a fortnight or as the tide allows).

The Whanganui Sailing Club is a friendly place welcoming new members to join, and boats are available for people to learn to sail in. Once you have completed the 3-day course you can take part in club sailing whilst having 'on the water' support.

Once someone gains enough confidence, they can take Sundays to the next level and have even more fun by going to out-of-town events and regattas. These are usually held over weekends or national events over a week. This allows sailors to experience different sailing conditions, compete with different sailors and bring home new skills, experience and confidence. The Whanganui Sailing Club has its own annual regatta this season on 9 and 10 March. This will involve six races being held with different types of boats sailing on the Whanganui river.

The Whanganui Sailing club is offering Learn to Sail coaching days on 14 and 28 October, 2 December or 26-28 January. The cost is \$150 per person. For more information please email l.thomas5472@yahoo.co.nz.

Bowls results

Wanganui East Bowls

Mens Gordon Pairs: 1st C Field, J Holden, 2nd T Trotter, M Watson. **Woman's Gordon Pairs:** 1st M Foster, T Ward, 2nd J Johnston, S Tasker. **Bell Drawn Triples:** 1st J McCall, B Hourigan, M O'Donnell, 2nd N Grant, G Adams, R Topless. **Tasker Drawn Triples:** 1st D Martin, M Conwell, J Marden, 2nd J Johnston, M Blinkhome, D Clarke.

~ Golf results ~

Castlecliff 9 Hole Club

Thursday 28 September MC Medal
Ladies: Joanne Knapp 41, Elaine Everitt 44. **Mens:** Mike Meyrick 34, Richard Smith 35, Sam McGregor 36 c/b. **Raffle:** Allen Willis

Please note tee off time is now 9.30am.

TAWHERO GOLF CLUB RESULTS

29 September 2023 Friday Haggie [stableford] Dave Johnston 20, Trevor Sammons 17, Sheldon Curtis 11.

1 October 2023 Sunday 18 Hole Haggie [par] Craig Campbell 1, Damien Wallace -1, Wesley Sharrock -3.

3 October 2023 Tuesday 9 Hole Medal Round [nett]: **Men's Division 1:** Dave Johnston 37, Little Paki 39, Joshua Larkin 40. **Men's Division 2:** John Deighton 38, Bob McIntyre 48. **Women's Division 1:** Bernadette Hadfield 42, Jan Crossan 49. **Women's Division 2:** Jean Walsh 35.

Upcoming events: Twilight 2 Team 6 Hole Ambrose Friday's Tee off from 3.30pm. No more Friday haggie moved to Saturday's 9/18-hole, \$5 Haggie, tee off 7.30am-12.30pm. Summer membership affiliated \$265 1st October 2023 - 31st March 2024.

'Love Tennis' leads to 50 new members for club

'Love Tennis' is a national initiative, and most New Zealand tennis clubs participate in it to encourage new members into the game of tennis.

The Whanganui Tennis Club used it for an Open Day on 10 September, and as spokesperson Robert Scott says, "It attracted hundreds. We had 48 sign up on the day and two more since."

The club has up to 300 members and is a result of successful mergers of Whanganui tennis clubs a number of years ago. The club has 12 courts with

four of them recently re-laid with Astro Turf. They come complete with LED lights, enabling play in the evenings.

If they need more courts for a tournament such as the Masters Games or the National Māori tournament, they can access courts at the nearby City College and Intermediate schools. The courts are seen as among the best in the country. It achieved the honour of being named 'Regional Tennis Club of the Year' earlier this year.

Club days are on Saturdays and Sundays, mainly

for social tennis. Then there are competitions and business house leagues and inter-club games in Palmerston North. But you can play almost any time you want, as access to the courts and showers comes with a fob.

There are good bar and lounge facilities which the club shares with the Squash Club, which forms part of the facilities.

They have a coach who works mainly through the schools to encourage young ones to take up the sport and develop their skills by playing at



From left: Dana Hiri (Club Coach), Ruby McIntyre (Club Champ), Steph Lewis MP, Mayor Andrew Tripe and Robert Scott (Love Tennis organiser)

the courts. There is also a Tennis Whanganui development officer.

At the recent Open Day there was a fund raiser for the SPCA and for a koha you had the chance to play against the Mayor and/or the MP for Whanganui. The club will also have a 'Vet Tournament' over Heritage Weekend. You can retrieve those wooden rackets and get ready for cucumber sandwiches.

Here's a better way to get rid of unwanted clothing.

DONATE TO... **Zest** FOR MISSION

163 Victoria Ave, Wanganui • Ph 345 2139 (extn 2)

Empowering people, encountering lives.



CITYMISSION WHANGANUI

Spring SALE Spring SALE

2017 SUZUKI IGNIS

1.2L, HYBRID, auto, only 57,000kms, alloys, tints, weather shields, 60/40 split rear seats with isofix, great economy!



Was \$17,995 **NOW \$16,750**

2018 SUZUKI X BEE

1.0L, HYBRID auto, only 68,000kms, fog lights, alloys, Isofix, 360 degree camera, reverse sensors, push button start, 5.4L/100kms.



Was \$21,995 **NOW \$19,995**

2019 SUZUKI SWIFT RS

1.0L, turbo, petrol, auto, only 26,000kms, alloys, reverse camera, SatNav, Android Auto/Apple CarPlay, only 5.7L/100kms, turbo, 1 owner.



ON SALE **NOW \$21,995**

2018 TOYOTA YARIS GX

1.3L, petrol auto, only 92,000kms, body kit, full service history, immobiliser, auto lights, NZ new, CD player, 5 star safety rating, high seating.



ON SALE **NOW \$12,995**

2021 HYUNDAI IONIQ 5

58kwh, fully EV, auto, only 45,000kms, 380km range, reverse camera, alloys, Apple CarPlay / Android Auto, wireless charging.



Was \$56,995 **NOW \$55,995**

2021 NISSAN NOTE X

1.2L, HYBRID, auto, only 900kms, climate control, body kit, LED headlights, blind spot detectors, parking sensors, E-Power.



Was \$36,995 **NOW \$34,995**

2005 TOYOTA RAV 4 J

2.0L, petrol, auto, only 136,000kms, fog lights, alloys, tints, weather shields, towbar, central locking, sporty, practical & reliable.



Was \$11,995 **NOW \$10,995**

2019 SUZUKI VITARA TURBO

1.4L, turbo petrol, auto, only 52,000kms, two tone, Safari Edition, black alloys, body kit, parking sensors, Isofix, reverse camera, SatNav.



Was \$26,995 **NOW \$25,750**

2016 FORD MUSTANG GT

5.0L, V8, 6 speed manual, only 66,000kms, alloys, full body kit, leather, SatNav, manual, GT Fastback tuned & ready for a new home!



ON SALE **NOW \$59,995**

2018 JEEP COMPASS

2.4L, petrol, auto, only 34,000kms, alloys, tiptronic, tinted windows, fog lights, keyless entry, 5 star safety, stunning, luxurious & loaded SUV.



Was \$29,995 **NOW \$27,995**

2014 HYUNDAI IX35 GDI

2.0L petrol, auto, only 141,000kms, reverse camera, alloys, high seating, cruise control, fog lights, roof rails, leather.



ON SALE **NOW \$16,995**

2014 NISSAN X-TRAIL ST

2.5L petrol, CVT auto, only 195,000kms, alloys, only 8.8L per 100km, 7 seater, large boot, reverse camera, towbar.



ON SALE **NOW \$15,995**

2022 NISSAN X-TRAIL TI-L

2.5L, petrol, CVT auto, only 3,200kms, 360 deg. camera, safety package, adaptive cruise control, top spec, demonstrator.



Was \$59,995 **NOW \$54,995**

2016 MITSUBISHI ASX VRX

2.0L, petrol, auto, only 119,000kms, keyless entry/start, towbar, reverse camera, bonnet protector, alloys, parking sensors, VRX, leather, sunroof.



ON SALE **NOW \$19,995**

2015 HOLDEN COMMODORE VF SV6

3.6L, petrol, auto, only 96,000kms, 2 seater, towbar, tonneau cover, alloys, leather, dual climate control, reverse camera, sensors, great ute!



Was \$35,995 **NOW \$33,995**

2023 FORD RANGER XLT

2.0L, Bi turbo diesel, 10 speed auto, 2WD, only 3,600kms, hardlid, towbar, alloys, 10.1" touch screen, reverse camera, keyless entry/start.



ON SALE **NOW \$56,995**

2016 NISSAN NAVARA ST

2.3L, twin turbo diesel, 6 speed manual, roof rack, only 127,000kms, roof rack, sportsbar, tonneau cover, towbar, black out grill & alloys.



ON SALE **NOW \$28,995**

2008 FORD RANGER XL

3.0L, turbo diesel, manual, only 289,000kms, king cab, 2WD, canopy, roof rails, towbar, a great workhorse for any tradie. Priced to sell.



Was \$16,995 **NOW \$13,995**

2020 MITSUBISHI TRITON GLX-R

2.4L, turbo diesel, 6 speed manual, 20" wheels only 10,000kms, black out package, towbar, tonneau cover, sportsbar, reverse camera.



Was \$41,995 **NOW \$39,995**

2016 LDV V80 BIGGER

2.5L, turbo diesel, manual, only 72,000kms, dual sliding doors, 3 seater, bluetooth, cruise control, great large cargo van.



ON SALE **NOW \$26,995**

You buy. We pay!



SAVE UP TO \$1,207

For a limited time, when you buy a new Suzuki Swift Sport, Vitara Turbo or S-Cross, we'll pay the Clean Car fee! Plus, with No Deposit 6.9% p.a. Finance it's even easier to drive away today in a new Suzuki. So, what are you waiting for? It's time to clean up with this special deal, available now.

*Clean Car Fee offer applies to all new Suzuki Swift Sport, Vitara Turbo and S-Cross vehicles registered between 1-31 July 2023. The Clean Car Fee that applies to the vehicle will be paid for by Suzuki New Zealand at the time of registration. Finance payments are based on nil deposit, 6.9% p.a. fixed interest rate, 5 year term, \$10.25 PPSR fee, \$100 UOC loan fee and \$200 dealer origination fee. On-road costs are payable to the Dealer. Suzuki Finance is provided by UOC Finance Limited. Lending criteria, fees and standard terms and conditions apply. These offers are available 1-31 July 2023 and exclude Jimmy, fleet purchases, demo vehicles and all other promotions. www.suzuki.co.nz



NISSAN

CLEAN CAR TAX
WE PAY, YOU DON'T

Nissan will pay the clean car fee applicable to any new ST, ST-X or PRO-4X models. Valid until the 31st October 2023.

THE BEAST RUNOUT

TRITON
2WD GLX-R AUTO
NOW JUST **\$40,990** ^{+ORR*} ^{+ORF*}

MITSUBISHI MOTORS
Drive your Ambition

105
MONTHS
AD VANTAGE

*Price listed is for Triton 2WD GLX-R and excludes on road costs of \$950 which includes registration, WOF, 1000km road user charges and a full tank of fuel and excludes the Clean Car Fee of \$6,440. Optional accessories shown, available at additional cost. Visit www.mmnz.co.nz for full Diamond Advantage Warranty conditions.

276 & 330 Victoria Avenue, Wanganui. Phone 06 345 5115



David Jones Motors



- Budgeting and debating -

By Carl Bates, National Party candidate for Whanganui

Last week saw the end of what seemed an almost never-ending series of election debates and Meet the Candidate sessions. But the final debate in Whanganui was a really interesting and challenging one.

Run by the Whanganui Budget Advisory Service, it was more of a forensic examination than debate! The four candidates present, Marion Sanson, William Arnold, Steph Lewis and myself, were asked a series of questions directly related

to the issues that the Budget Advisory Service sees on a daily basis.

The statistics make it clear that Whanganui is over-represented in negative economic demographics. Household incomes are lower, and the deprivation index is higher than the national average. Our Labour Force Participation Rate is seven percentage points lower than the New Zealand average, GDP per capita is more than \$30,000 lower than the national average of \$70,000, and mortgage affordability has dropped by 8.7% in the year to June

2023.

And yet Whanganui still has a lot going for it, if you look beyond the statistics. Our temperate climate is the envy of many, visitors to Whanganui are staying longer and spending more, and our arts and cafe scenes are great.

There's no silver bullet to solve Whanganui's problems, though. However I believe that the determination of the National Party to rebuild the economy, get inflation under control, and cut red tape to allow businesses, farmers and the staff they employ to prosper. We

are surrounded by some of the best and most carbon-efficient food and fibre producers in the world.

Only a strong economy can end the cost-of-living crisis, lift incomes, lower mortgage rates, and fund the quality public services we all deserve. And my preparation for the Budget Advisory Service exploration was a reminder to me that the National Party has the economic plan to get New Zealand and especially Whanganui out of the doldrums and back on track.

Roll on October 14th.



Candidates, Steph, Marion, William and Carl.



WANT TO SWAP YOUR OFFICE PARTY FOR A DECK PARTY?

ARE YOU LOOKING FOR A VENUE FOR YOUR CHRISTMAS FUNCTION THAT IS OUT OF THE ORDINARY?

With an on board licensed bar, catering to suit your needs, freindly staff and the option to play DJ yourself or have some live tunes playing PS Waimarie makes the perfect venue for you to celebrate your team and the year that was.

WWW.WAIMARIE.CO.NZ
INFO@WAIMARIE.CO.NZ
06 347 1863
0800 STEAMER

BOOK YOUR Christmas Function

Now

The Wanganui Jockey Club's 175th celebrations now has 2 x Christmas at the races events!

Christmas at the Races

BOOK NOW
NO GATE SALES - BOOK ONLINE

supported by LOVERACING.NZ

Saturday 25 November Come for a great day of racing!

Saturday 2 December Featuring the Steelform Group Wanganui Cup

Book in your Christmas function now for either event!
Both events are pre-ticketing events only.



Buy tickets online at <https://wjc.flicket.co.nz>

* Please note that booking fees may apply.



Ph 345 3968
wjc.co.nz

WANGANUI FUNCTION CENTRE



BOOK NOW!

Book your CHRISTMAS FUNCTION with us now!



LaQuattro

Mexican Grille

13 Victoria Avenue, Wanganui
www.thelaquattro.co.nz



Christmas time, mistletoe and wine and pints



PETS



- The Spot Report -

Meeting and greeting dogs safely

Thank you to those who entered the colouring competition last month, and you all did a great job. It is a shame there was not a prize for everyone. The winners' entries will be displayed at Pet Essentials, 35 Somme Parade, who were so generous to provide the 1st prizes.

As the weather improves, there will be more people and dogs out and about. Please don't be one of those who assume that all dogs are nice and friendly. Because a dog is in public, it does not mean it is confident, well-mannered, has a nice temperament, or even that

it likes strangers and or strange dogs.

Approaching a strange dog in a public place can be risky if it is alone or especially if you are assuming the owner is in control. Not all dogs are happy to be approached. Because the dog is on leash and cannot escape, some dogs feel trapped and become more fearful bringing out the fight response and a violent reaction. Remember the saying - fight or flight!

Meeting a dog in public should be a great experience if done correctly. Use the following tips to make friends with that cute doggie at the end of his leash.

1. Do not approach any strange dog, even if it looks friendly

2. Ask the owner's permission first and wait for a reply before making any move toward the dog

3. Greet the dog by turning side on and squatting down to his level

4. Avoid direct eye contact and use your peripheral vision to observe how the dog reacts

5. Ask the dog's permission and offer the back of your hand for the dog to make first contact. Keep your hand under the dog's chin as hands over the head can be a threat



6. Watch for signs that the owner does not trust the dog or does not have proper control

7. "Ask the owner, ask the dog"

For more information; contact Margarette who has been working with puppies, dogs and people since 1992 and is a Full Member of The Association of Pet Dog Trainers NZ Inc. Phone: 343 9806 or 027 2905013

- Woofs and barks from Spot

Paws, beaks and hooves costing pet lovers millions

The dog days are certainly not over with canine cuties responsible for around 73% of pet damage claims annually, AMI reveals.

And it's not just paw prints at the scene. A dig through the last three years of claims data shows horses, sheep, and parrots feature on the suspect list too with cats, rabbits, and pigs also helping to compile an incredible 15,572 pet damage claims.

"The financial damage of those claims totals \$32 million, so perhaps our pets have a keen eye for nice things too," says AMI Executive General Manager Consumer Brands Paula ter Brake, who shares her home with rescue dog Bear, and a cat called Rosie.

The most commonly damaged household item by pets is carpet which makes up 44% of the list, followed by 12% for couches and 8% for glasses.

"While it's not that surprising that dogs are our cheekiest housemates,



(nearly 745 of claims) we've also received claims for damage to property incurred by horses, sheep, and pigs. Cats were responsible for nearly 26%.

"Canterbury is our top location for pet damage claims, which suggests that behind all that agricultural activity, farm animals are up to antics of their own," says Paula.

And it seems everything in the house can be a chew toy when you have sharp teeth, over 20% of all pet damage claims made were for household contents that had been badly chewed, with \$7 million paid towards those claims.

"Glasses are most at risk of becoming a chew toy, followed by carpets, hearing aids, couches, and dentures," Paula adds.

It turns out climate change isn't the only contributor to flood risk. Since 2020, AMI has received 33 claims for flood damage after cats turned on water taps while their owners were out.

"It seems that we should prepare for the peculiar if we have pets."

For more tips on how to keep your pets from nibbling on furniture, visit <https://www.spcan.org.nz/advise-and-welfare>

Colouring-in competition winners

The winners of the K9 Puppy Kindergarten colouring-in competition were:

Age Group 0-8 years

Winner: Emily Stewart. **2nd:** Sienna Holloway

Age Group 9-15 years

Winner: Josephine Toohill **2nd:** Sophie Brown

Prizes: 1st: Pet Essentials voucher; 2nd: Dog bowl and books, courtesy of K9 Puppy Kindergarten.

Thanks to all for the bright and colourful artwork. It was hard to choose the winners and placegetters!

Belmont Boarding Kennels & Cattery

Services:

- Dog Boarding (short & long term)
- Cat Boarding (short & long term)
- Dog Daycare



185 Mosston Road
Wanganui

Phone
06 344 4010

Email
omeishan@xtra.co.nz

Your caring animal health professionals

Providing quality services for your animals by veterinarians supporting you. You get quality health care for your animal from those who know best.

HOURS

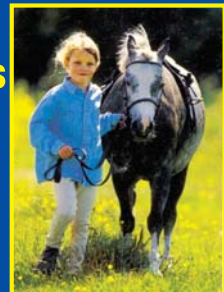
Mon-Fri 8am - 6pm
Sat 9am - noon
Appointment required



WANGANUI
VETERINARY
SERVICES

35 Somme Parade, Wanganui

Ph 349 0155



K9 Puppy Kindergarten & Intermediate Training

Puppy Classes

- 8 - 12 weeks - Wednesday at 5.30pm
- Fully Vaccinated 3 months and over Thursday at 5.30pm

Margarette Marshall

Ph: 343 9806 or 027 290 5013

Full Member of Association of Professional Dog Trainers NZ Inc

K9 Puppy & Dog Training is a not for profit service



mybeau

VET COLLECTION

Scientifically Formulated
Nutraceutical Pet
Health Care Supplements



Available at all good vet supply retailers.



Jumbo crossword

ACROSS

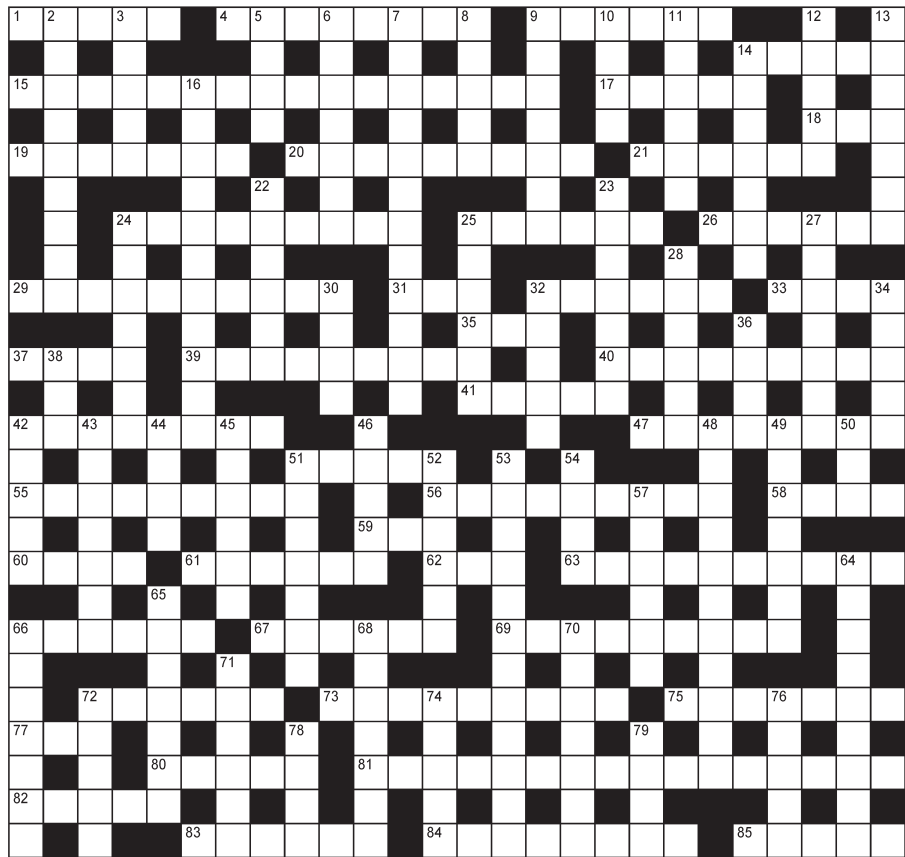
- 1 Baggy (5)
- 4 Elusive (8)
- 9 Pick (6)
- 14 Main (5)
- 15 Speak plainly and bluntly (4,1,5,1,5)
- 17 Duck for down (5)
- 18 Unreturnable serve (3)
- 19 Disregarded (7)
- 20 Saying aloud for the purpose of recording (9)
- 21 Drawing implement (6)
- 24 March stiff-legged (9)
- 25 Club (6)
- 26 Seat for two or more (6)
- 29 Inward breath (10)
- 31 Wane (3)
- 32 Rotate (6)
- 33 Lodgings (4)
- 35 Pale (3)
- 37 As well (4)
- 39 Fondly recall the past (9)
- 40 Delivery operation (9)
- 41 Tree (5)
- 42 Retaliatory action (8)
- 47 Done again (8)
- 51 Deep-seated anxiety (5)
- 55 Refused to do business with (9)
- 56 Very ill (2,1,3,3)
- 58 Action (4)
- 59 Track circuit (3)
- 60 Large plant (4)
- 61 Far away in space or time (6)
- 62 Truss (3)
- 63 Antagonist (anag)(10)

DOWN

- 66 Shared, common (6)
- 67 River crossing (6)
- 69 Tourist (9)
- 72 Stringed instrument (6)
- 73 Disbelieving (9)
- 75 Sheath for handgun (7)
- 77 Leather-piercing tool (3)
- 80 Dark wood (5)
- 81 Go out in bad weather (5,3,8)
- 82 Wear away (5)
- 83 Expose (6)
- 84 Ghost expeller (8)
- 85 Majestic (5)
- 2 Large ape (9)
- 3 Volley of shots (5)
- 5 Jump (4)
- 6 Foresee (7)
- 7 Readily satisfied (4,2,6)
- 8 Bread ingredient (5)
- 9 Removed dirt (7)
- 10 Portent (4)
- 11 Soaked through (6)
- 12 Last (5)
- 13 Transgression (7)
- 14 Noisy firework (7)
- 16 Spiny-backed dinosaur (11)
- 22 Light gas (6)
- 23 Enchant (7)
- 24 Alluring beauty, charm (7)
- 25 Spun woven trap (6)
- 27 Cut into three (7)
- 28 Go back on a promise (6)
- 30 Cat's lives? (4)
- 32 Trap (5)

ACROSS

- 34 Church council (5)
- 36 Speed competition (4)
- 38 Fib (3)
- 42 Automaton (5)
- 43 Disbursement (7)
- 44 Pressing appliance (4)
- 45 Song of loyalty (6)
- 46 Nimble (5)
- 48 Wages container (3,8)
- 49 Accounts checker (7)
- 50 Day before (3)
- 51 Break from a meeting (7)
- 52 Walk very quietly (6)
- 53 Develop a liking for (4,1,5,2)
- 54 Deep singing voice (4)
- 57 Riches (6)
- 64 Large musical group (9)
- 65 Afternoon performance (7)
- 66 Mosque turret (7)
- 68 Unit of sound intensity (7)
- 70 Vividly descriptive (7)
- 71 Wheedle (6)
- 72 Murky darkness (5)
- 74 Serenity (5)
- 76 Strain (5)
- 78 Funeral fire (4)
- 79 Shambles (4)



JAMIE'S ANGELS

THE ESSENTIAL MEAL SERVICE

Delicious meals on a plate delivered daily

Stay Well - Eat Well - Stay Local - Eat Local

Our list is now open to new Gold Card/Senior clients

Call today on 0800 526 435 and find out how to become an Angel's client

Email: jamiesangelsnz@gmail.com or go to: jamiesangels.co.nz

SIMON SHUKER'S CODE-CRACKER Extra 760

EACH number in our Code-Cracker grid represents a different letter of the alphabet. For example, today 14 represents C, so fill in C every time the figure 14 appears. You have one letter in the control grid to start you off. Enter it in the appropriate squares in the main grid and solve the starter word. Fill in other squares in the main and control grids with the found letters and look for the next word. Follow the word trail through the puzzle to its completion. Visit www.codecracker.co.nz

1		1		2		3		4		5		14	C
6	7	3	8	4	9		10	11	7	12	13	9	15
4		6		12		11		4		11		11	16
4	11	14	11	15	11	4		9	6	16	11	17	17
11		11		11		1		2		11		18	18
4	1	11	15		4	17	6	1	11				19
4		15		4		2		11		19		4	20
													21
2		20		12		2		21		12		3	22
22	17	8	22	22		15	8	3	2	23	17	11	23
22		24		13		11		12		23		2	24
12	24	1	2	17	11		11	24	23	17	11	24	25
25		4		26			11		11			4	26

A B C D E F G H I J K L M N O P Q R S T U V W X Y Z

Sudoku

5				6				
3			1	9		8		6
	9		3					
	7		3		2			
	8		9		4		7	
					8		3	
9	2		6	3				7
			2					4

HARD

Previous solution

2	9	4	6	8	7	1	3	5
5	8	3	2	1	9	7	6	4
6	1	7	4	5	3	9	2	8
9	3	2	5	7	6	8	4	1
8	6	1	3	9	4	2	5	7
4	7	5	1	2	3	6	9	3
7	2	8	9	3	5	4	1	6
1	5	6	8	4	2	3	7	9
3	4	9	7	6	1	5	8	2

Fill the grid so that every column, every row and every 3x3 box contains the digits 1 to 9.

Previous solution

1	H	2	E	3	R	4	V	5	I	6	F	7	T	8	O	9	S	10	L	11	A	12	13	Q	
14	U	15	D	16	M	17	N	18	W	19	Y	20	J	21	P	22	K	23	G	24	Z	25	B	26	X

Previous crossword solution

ACROSS: 1 Put up a smokescreen, 10 Dialogue, 15 Crèche, 16 Wanderlust, 17 Spirited, 19 Layette, 21 Beard, 22 Imprudent, 25 Faultless, 27 Ageless, 29 Biceps, 33 Angry, 34 Unctuous, 36 Apparition, 39 Tot, 41 Servile, 42 Gutter, 43 Hooves, 44 Pass, 45 Realism, 48 Stalactite, 53 Parasol, 57 Ache, 58 Coerce, 59 Raisin, 60 Summary, 62 Duo, 64 Suspicions, 65 Brickbat, 66 Least, 69 Review, 70 Thwarts, 71 Pricless, 76 Interlude, 77 Swamp, 78 Samovar, 83 Diagonal, 84 Undertaker, 85 Astray, 86 Espresso, 87 Vanish into thin air.
DOWN: 2 Unreal, 3 Uncle, 4 Ale, 5 Mown, 6 Kennels, 7 Sherry, 8 Rule, 9 Ensemble, 11 Impede, 12 Laryngitis, 13 Gate, 14 Endures, 18 Presuppose, 20 Tilt, 23 Blunt, 24 Recitals, 26 Arrival, 28 Gastric, 30 Sneeze, 31 Hostel, 32 Make-up, 35 Taunt, 37 Nasal, 38 Plus, 40 Thai, 45 Rears, 46 Adhesive, 47 Myopia, 48 Stronghold, 49 Aped, 50 Acrobat, 51 Trivia, 52 Think, 54 Ague, 55 Aimless, 56 Onrush, 61 Pigeonhole, 63 Patch, 67 Bandanna, 68 Plea, 69 Residue, 72 Ramekin, 73 Delays, 74 Switch, 75 Safari, 79 Often, 80 Damp, 81 Deli, 82 Trio, 85 Ash.

5x5

C	I	E		
A	O	E		
S	C	A		
S	Y			

Insert the missing letters to complete ten words — five across the grid and five down. More than one solution may be possible.

S	T	A	M	P
L	A	G	E	R
A	B	A	T	E
P	L	I	E	S
S	E	N	D	S

Previous solution

All puzzles © The Puzzle Company
www.thepuzzlecompany.co.nz



WHAT'S ON

IN THE COMMUNITY

Alcoholics Anonymous
Phone 0800 229 6757.
If you have a drinking problem maybe we can help. AA Wanganui area meeting list: Sunday, St Johns Lutheran Church Hall, 51 Liverpool Street, Wanganui, 9am; Monday, Friendship Hall, Morris Street, Marton, 7.30pm; Tuesday, St Johns Lutheran Church Hall, 51 Liverpool Street, Wanganui, 12.30pm; Wednesday, St Luke's Church Hall, 34 Manuka Street, Castlecliff, 7.30pm; Thursday, St Johns Lutheran Church Hall, 51 Liverpool Street, Wanganui, 7.30pm; Al-

Anon (family support) Friday, Gonville Library meeting room, 12.30pm. Ph 0508 425 266.
An Amazing Opportunity if you are interested in Parapsychology. There will be a weekend Workshop in November ... I have been there for clients "to see more clearly" for many, many years now. I am available 6 days a week. Ring for more information: Sandra Singleton. Psychic Numerologist. 06-345-3803.
Birthright Whanganui AGM
To be held on Tuesday, 17 October 2023, 6.15pm

at the Trinity Methodist Church, 183 Wicksteed Street.
Do You Have Questions About the Bible?
Come and join us at the Christadelphian Hall on Tuesday night at 7:30pm for Bible-based discussion and a cup of tea. All are most welcome. 138 Great North Road. Email: wanganui.ecclesia@outlook.co.nz / www.thisisyourbible.com
Free Independent Hearing Checks
Your Way | Kia Roha - Hearing, offers free independent hearing checks at 244 Victoria Avenue,

Whanganui. This service is funded by Whatikaha, Ministry of Disabled People, to anyone 16 years and over. We don't sell or fit hearing aids or make any commissions from recommending equipment. For appointments phone 0800 008 011.
NZ Society of Genealogists Whanganui Branch
meets in the Alexander Heritage and Research Library, Monday 9 October, 6.45pm — "Rascals, ratbags and rapscaillions!" Family Stories about the (often likeable) ratbags found in the family tree. Member contributions invited. Individual research available from 6pm, and a cuppa before the meeting.
Porridge Watson - What's On
Z Grade Movie Night on Thursday 5 October, featuring the old Neil Breen's classic, Fateful Findings. Saturday, 7, Porridge Watson Garage Sale, 12pm. Porridge Family Band, starts 4pm Saturday. Sunday, Wellington Heads playing from 4pm. All events are FREE.

The Compassionate Friends Whanganui AGM
Saturday, 14th Oct, 2023. 11am at 90 Surrey Road. Agenda: Chair Report; Finance Report; Trustees and Executive Elections; General Business. Enquiries - Keren Ph: 344-3345.
Theosophy Whanganui Public Meeting
Usually held 2nd Sunday Monthly. Where: Community Arts Centre, back river entrance in the Awa Room. When: 2pm What: Presentation with respectful discussion and communication. Purpose: No dogma, 'Do no harm', explore ancient wisdom to develop self with the universe. Email: theosophywhanganui@gmail.com
Wanganui Spiritual & Awareness Centre
Meetings 7pm Sundays, Quaker Meeting Rooms, 256 Wicksteed St. Local or visiting speakers or mediums sharing their spiritual gifts. Join our healing circle, take a raffle, stay for supper and chat. Everyone is welcome. Koha appreciated. See our Facebook page for details. Ph: 027-697-6308.
Wanganui Girls' Assn Coffee and Catch up Morning Tea
Ad Astra Hostel, 10am, Wednesday, 18th October. \$10 per head.

Whanganui Heritage Collectors Fair
Jubilee Stadium, October 22, 9.30am-3.30pm. \$2 entry. Huge range of antiques, collectables, vintage, including art, glass, clothing, books, stamps, coins, pottery, jewellery, basketry, woodware, carpets, Crown Lynn, ornaments, art deco, furniture and more. Follow on Facebook Whanganui Heritage Collectors Fair.

Whanganui Mah Jong Club Inc
Annual General Meeting, Monday, 16 October 2023, 1pm. Masonic Club Rooms, Dublin Street, Wanganui.
What's On in the Community Notices
What's On in the Community notices are \$10 for up to 50 words. Contact River City Press, 52 Ingestre Street, Whanganui, by Tuesday 1pm to place your advertisement.

LETTER TO THE EDITOR

"Let's take back our country"

The New Zealand I know and love, along with the democracy that has served us so well and made us the envy of the world, is hanging by a thread. The lack of transparent government and assault on our democracy is dividing us as a people when we most need to be united. A divided nation cannot prosper.

Successive governments have signed us up to UNDRIP and other foreign declarations, ripping away our sovereignty and our right to determine our own path and given it to unelected foreign entities such as the UN, WHO and WEF. Who gave them the mandate, who asked the people for their permission.

These are hard times, with declining foreign earnings, a housing crisis, rising cost of living, unchecked rising crime and lack of access to health services based on need rather than racial identity.

The bureaucrats on the Wellington beltway and the academics in their ivory towers have lost sight of what really is important to ordinary people. Ideology doesn't feed empty bellies, doesn't put a warm roof over families' heads or get them good health outcomes, doesn't tackle crime and certainly won't regrow our country's lost wealth.

We need to be investing our time and resources in growing our wealth, value adding to our products to maximize returns for our exports. Not putting woke, unproductive legislative obstacles in the way of actually generating New Zealand's export earnings. Without growing our wealth together, we cannot look after the vulnerable in our community. Now is not the time for social experiments



William Arnold, Whanganui candidate for NZ First

when so much is at stake.

New Zealand First is the only party prepared to say what really has to be said and tackle the real issues besetting our country and all its people head on. We're the only party with a strong record of holding the other parties' feet to the fire when it comes to accountability. New Zealand First has strong, experienced leadership, sensible policies and the will to effect the changes necessary to return our country back to the productive, proud democracy we once were. We're on a mission to return New Zealand to what we once were, the greatest country on Earth. If you want to join many hundreds of thousands of New Zealanders to make that happen...

Then party vote New Zealand First AND LET'S TAKE BACK OUR COUNTRY

- William Arnold, Whanganui candidate for NZ First

River City Press
Positive news stories welcomed
Email: rivercitypress@xtra.co.nz
Ph. 345 3666



Recent Bereavements

Sadly passed away recently...

- Robert Walter ALWARD**, on 29 September 2023, aged 87 years.
- Peter John (Mr B) BAIRD**, on 26 September 2023, aged 77 years.
- Frances Judith HARDAKER**, on 20 September 2023, aged 89 years.
- Lyn TAYLOR**, on 29 September 2023, aged 84 years.
- David Bernard (Bernie) WARD**, on 23 September 2023, aged 84 years.
- Murray Ross WEASTELL**, on 1 October 2023, aged 64 years.

DEMPSEY & FORREST

FUNERAL DIRECTORS

Arrange a visit today and meet our friendly team. We are here to help you in your time of need. 208 Guyton St Phone 06 349 0202 any time www.dempseyandforrest.co.nz

Anderson Memorials

Your loving memories set in stone *100 YEARS 1914-2014*

HEADSTONES

Family owned for since 1914

For all monumental work in all cemeteries

Check out our website below

462 Somme Parade, Whanganui - opposite the cemetery
Tel (06) 343 8708, Email: info@anderson-memorials.co.nz
Showrooms in Feilding & Palmerston North
www.anderson-memorials.co.nz

Cleveland Funeral Home

(06) 345 5522

179 Ingestre Street | clevelandfunerals.co.nz

Pre-Planning
Call or Visit
For Your Free
Pre-Planning
Pack

Review: Pot shots the 10th Whanganui Literary Festival

By Graeme Foster, a published author himself After a hiatus of three years with Covid-19, the biennial writers' festival returned for 2023. There was a wide range of authors and events. I was able to attend six of them. Starting off was the delightful, bashful, and funny Fiona Sussman, a qualified doctor, entertaining us as a writer. One of her earliest books was listed as a crime novel and since then, she has deliberately written one in that genre. The acerbic Sue McCauley is from Dannevirke and said that "it is so remote that no one knows that I am a well-known writer." Her early career as a writer was boosted with the well-known 1982 novel 'Other Halves.' As she spoke

it was evident that she is most comfortable writing about those other halves - ordinary folk. Stephanie Johnston was interviewed by Hamish McDouall and said how she at first she been fearful that the outcome of Covid-19 was going to be much worse than what, so far, it has been. Having a long list of publications, she has now been motivated to write a novel set in a world-wide plague. On the Sunday, I went to three talks. Witi Ihimaera would have the largest collection of published books and probably attracted the largest audience. His passion is to write in our local cultural style, Pakeha as well as Māori. Gardener Gordon Collier spoke on 'Up the Garden Path,' commenting on the quality and variety of

plants available in New Zealand gardens, open for public viewing. He was fittingly earthy. Finally, there was historian Jock Phillips who has written a book on 'A History of NZ in 100 Objects.' He chose to speak on ten historical items of sewing, complete with illustrations. One example was an early Singer sewing machine salvaged from the 1886 Tarawera eruption. There were two highlights for me. The first was when Witi Ihimaera mentioned he was born on February 7, 1944 - the same day as me. The second was when I was in the right seat at the right time, winning a copy of Jock Phillip's book 'Our Land in Colour.' I have never before won anything free.

SITUATION VACANT

DEPUTY PRINCIPAL
Full-time, permanent position
starting Term 1, 2024 (or by negotiation)

Do you love learning and leading others in their inquiry journeys?
Are you passionate about culturally responsive teaching and learning?
Are respectful strength-based relationships at the core of your practice?
Can you communicate courageously and honestly from a growth mindset?

We are looking for a DP who has strong curriculum knowledge, proven classroom expertise, and experience in leading others to support the continuing development of our strong positive culture and our exciting learning journey. This role has a 0.4FTE teaching component. If this is you then join our enthusiastic, innovative, creative and highly motivated team.

Application packs are available by emailing the Principal at office@keithst.school.nz
Applications close 3pm, Friday 13 October 2023



REAL ESTATE

spring A fresh start!

For a FREE market appraisal on your property, talk with Marion Farr today!
Experience + Expertise = Results

SOLD

Email: marionfarr@xtra.co.nz



Please call Marion Farr on 021 572 033 or (06) 343 8228



HEALTH & BEAUTY

JADE Traditional Thai Massage. Excellent massage at reasonable prices. 64 Guyton Street. Phone 348-8466 for an appointment.

SITUATIONS VACANT

GET paid to exercise! Pamphlet Distribution require reliable runners to deliver RCP and brochures each week. Phone Bubs on 343-2010 or 027-218-2010.

Welcome to **ARAMOHO**

Churton School PTA runs successful community quiz evening

The Churton School PTA is an active group of parents ready and willing to organise events to raise funds for the school. A major fundraiser is their annual Quiz Evening (except in Covid times), and the 2023 event was "a great night with excellent feedback." It was the first time for committee member Leanne van Staden to be the quiz master - and that is not an easy job, get-

ting interesting questions, not too difficult but not too easy. Then you have to, as chair of the PTA Vincent Mansell says, "keep everyone engaged, make it a lot of fun and avoid it becoming too rowdy as the enthusiasm level mounts." Leanne clearly did a great job. The topic areas were - decade questions (the theme was 'decades' and teams could come dressed in their favourite decade costumes), sports,

movies, NZ Landmarks, NZ logos and general knowledge." There were 13 tables of teams of up to 8 at \$10 per person but there was also other fundraising on the night, such as auctioning of donated items, thanks to the generosity of the local community and businesses. The bidding was active, with "some clearly buying blind" not knowing what was in the boxes. The main goal of the fundraising was to help pay for new shade sails, but the PTA also provides funds to help with school camps, sports scholarships (fees and uniforms) and library books. There were spot prizes, one for the best dressed team and a first prize (a voucher for dinner at the Rutland), although understandably, Leanne couldn't remember the team. So, no bragging rights there.

River City Press - Positive news stories welcomed
Email: rivercitypress@xtra.co.nz
phone (06) 345 3666

TRADES AND SERVICES



MONKEY BUSINESS
Tree Care

Eddie White
ARBORIST

mbtreecarenz@gmail.com
027 385 6597

www.monkeybusinessnz.com

OUR SERVICES

- pruning
- tree removal
- hedge trimming
- reductions
- storm damage maintenance
- planting

Get in touch for a FREE quote!



Residential & Commercial Builders

New Homes • Renovators • Kitchen Reno • Shower & Toilet Reno • Concrete Driveways • Footpaths
Patio Slab • Fencing • Decks • Retaining Walls & more.

Email: rksaicompanyltd@gmail.com
or chandsconstructionsLtd@gmail.com

PH: 021 051 0430, 022 321 2596 or (06) 344 5225

We do all building & construction work, you name it.

Square Cut Mowing

Big or small we mow them all!
Lawns - Ride on or conventional
Hedges, Edges and Weedspraying

Call John now for a quote...
021 659 003



HANDYMAN

For your Carpentry, Decks, Small Alterations, Plumbing, Drainage and Roofing Jobs.



Give me a call on 021 27 99 777



HOUSE WASHING
WHANGANUI

HOUSE EXTERIORS
DRIVEWAYS & PATHS
DECKS & FENCES
GUTTERS & ROOFS



Phone 027 657 8488

hello@whanganuihousewashing.co.nz
www.whanganuihousewashing.co.nz



PERSONAL

FREE confidential health checks, STI and HIV screening. Whanganui Hospital. Phone for consultation 348-1775/021-323-077.

LAWNMOWING + GARDENING

LAWNMOWING + gardening work wanted. Free quotes, phone or text 022-540-3375. LAWMOWING, section tidy-ups, pruning, WINZ quotes. TEL-TX 06-344-2535 021-0899-2345.

FOR RENT

FURNISHED room or caravan for a single person, big TV, lock on door. New kitchen & bathroom. By Collegiate. Large section, quiet, sunny. No bond. Phone 027-344-6699.

WANTED TO RENT

EMPTY section or paddock to park self-contained van, single male, quiet, no pets. Text only 021-185-9553.

vega

Get Your Best Mortgage Here

Natalie Sara
Residential & Commercial Mortgage Adviser

022 164 1566
natalie@vegalend.co.nz
www.vegalend.co.nz



100% locally owned



Dave Hoskin
CARRIERS LTD

Furniture removals door to door

National and international

390 Heads Rd, P.O. Box 5042 Wanganui
Phone: 06 344 7002 Email: darrell@hoskincarriers.co.nz

ENROL TODAY
(06) 343 9406 or email office@churton.school.nz
Burmah Street, Aramoho, Whanganui

SELF STORAGE
Six Sizes from 7m x 7m
THE RENT CENTRE LTD. 347 7867
AFTER HOURS: TONY WILSON 027 11 11 11



KAIKOKOPU RD
WANGANUI

AGENTS:

The Rent Centre MREINZ

Phone 06 345 0803
www.therentcentre.co.nz

NEED HELP?

Emergency.....111

City Mission/Foodbank 345 2139

Women's Refuge Wanganui 344 2204



CLASSIFIEDS

52 Ingestre St Ph 345 3666

Email: rivercitypress@xtra.co.nz

Nominate someone you think is deserving of our **Bouquet of the Week!**



Email or facebook message us with your nomination and reason why they deserve to win!

email: rivercitypress@xtra.co.nz
facebook: River City Press Wanganui



PUBLIC NOTICES / ENTERTAINMENT

ANNUAL GENERAL MEETING

Kai Iwi 1A Reservation

TAKE NOTICE that a meeting of the Kai Iwi No. 1A Reservation for beneficial owners and uki who whakapapa to Ngati Iti and Ngati Pukeko will be held as follows:

PLACE: Te Aroha Marae, 36 Rangitatau East Road, Kai Iwi, Whanganui

DATE: 28 October 2023

TIME: 10.00 am

AGENDA

- Minutes of previous Meeting
- Chairperson's report
- Treasurer's report and Statement of Accounts
- Special Trustee Election (3x positions)
- Addition to the Charter
- General Business

Nominations for Trustee vacancies close **6pm 18 October 2023**

For Special Election information and forms email: contact@tearohapa.com

SECTION 101 SALE AND SUPPLY OF ALCOHOL ACT 2012

LunarTech Limited, 30 Drews Avenue, Whanganui has made application to the District Licensing Committee at Whanganui for the variation of conditions on renewal of an On License in respect of the premises situated at 30 Drews Avenue, Whanganui, known as **Porridge Watson**.

The General nature of the business conducted under the license is a Tavern. The Days on which and the hours during which alcohol is intended to be sold is **10.00am to 1.00am the following day, Monday - Sunday**.

The application may be inspected during ordinary office hours at the office of the Whanganui Licensing Committee, 101 Guyton Street, Whanganui.

Any person who is entitled to object and who wishes to object to the issue of the licence may, not later than 25 working days after the first date of the publication of this notice, file a notice in writing of the objection with the Secretary of the District Licensing Committee at DLAdministration@whanganui.govt.nz.

No objection to the issue of a license may be made in relation to a matter other than a matter specified in section 131 of the Sale and Supply of Alcohol Act 2012.

This is the first publication of this notice.

AT CLUB METRO THIS WEEK

Friday 6th October Membership Draw

OKTOBERFEST This Saturday 7 October at 7.30pm

Tickets available at the club - \$30
Get in quick for a great night!



13 Ridgway Street
Phone 06 349 0149

Freda Sutherland Memorial Trust

Freda has provided in her Will for a small fund to be given to Whanganui citizens (particularly youth and women), medical and animal welfare organisations for training, health or welfare.

Applicants can apply for funds by providing:

- A relevant CV and proof of Whanganui birth or domicile (if an individual)
- Proof of enrolment at a tertiary institution or training programme
- Charitable status or similar (if an organisation)
- Reason for requiring funds.

Applications which close on

31 October 2023 are to be sent to Dot, Freda Sutherland Memorial Trust, C/- PO Box 789, Whanganui 4541 or delivered to Moore Law, 37 Somme Pde, Whanganui or emailed to: dot@moorelaw.co.nz



2024 COACHES

Expressions of interest are called for the coaches for both Premier & Senior Grade teams for 2024

Please reply by **Friday 20th October 2023**.

for more information
Neil Forlong
Ph 021 191 5471
nmforlong67@gmail.com

AGM

SUNDAY 5 NOVEMBER 2023 3.00pm

at the
Kaierau Rugby Club
100 Devon Road
Whanganui

WORK WANTED

A builder, renovator. Plumbing, electrical, painting etc. Large and small jobs. Quality workmanship guaranteed. Rates negotiable. Call Leo, 027-4331431, (06) 927-5289.

COMPETITIVELY priced builder/handyman for decks, pergolas, fences, renovations - all manner of work, big or small. Phone or text Jason 021-741-908.

HOME Maintenance and Shifting, House Clean-up, Gardening, Lawn-mowing, Water-blasting, Spout Cleaning, De-Cluttering, Anything Considered. Ph Ray 027-280-7015.

MOBILITY scooters. Sales, service, repair, rental wheelchairs, walkers, ramps. Call Graeme 021-1195118 or (06) 347-6927.

PROFESSIONAL/efficient Painter and Plasterer. No job is too small. Reference available. Call or text 022-035-0175.

BUYING and SELLING USED FURNITURE



Phone 345 3154
54 Maria Place Extn
Email: ginza2@xtra.co.nz

LAWN MOWING



Keeping Lawns & Costs Down!

- Locally owned & operated
- Pensioner discounts
- WINZ Quotes
- Ride on work

Wayne Bishop
Phone
027 555 3074

AFFORDABLE LAWNMOWING

Great quality service, great price. Pensioner rates available. Call Paul on **021 245 4999**

PAINTER



All House Painting
Waterblasting
Oven Cleaning
Ph Ron - 021 127 0456
or 06 345 4747

FOR SALE

BLINDS - Roller & Venetians to order. Free measure and quote. Strath Davis Furniture & Flooring, Ph (06) 345-0883.

NEW books available at River City Press, 52 Ingestre St. "From the Sea to the Mountain"; "Whimsical Tales of Old Wanganui"; "More Whimsical Tales of Old Wanganui"; "My Life - Annasophia".

NEW Season's Buxus box hedging Plants 10 for \$50.00, Good range of Native plant revegetation stock, \$6.00 each. Side dress your Polyanthus and Primulas with Dried Blood only \$8.00 per kilogram. Parnells Quality Tree and Shrub Nursery, 102 Fox Road Wanganui, Phone 344-6645, Established 1895.

MAINSTREET WHANGANUI

- AGM - Frank Bar + Eatery

60 Ridgway St, Whanganui
Wed 25 Oct 2023 5:30pm

Light refreshments & nibbles available
Please confirm your attendance to
Tel: 06 348 0157
Email: des@mainstreetwhanganui.co.nz
For more information visit
www.mainstreetwhanganui.co.nz

labour.org.nz

Steph Lewis for Whanganui



Authorised by Rob Salmond, 187 Featherston Street, Wellington.

GARAGE SALE

PORRIDGE WATSON
30 Drews Ave,
City Centre. 12 noon,
Saturday, 7 October.
Collectables, Nic Naks,
Records, Toys, Furniture
and clothes. Free entry.

Stallholders to be in by 11am.

RCP

Place your advert today - ph. 345 3666

WEBSITE DESIGN

GET a stunning, contemporary website at minimum cost, or give your old one a strategic revamp. Phone Peter on 020-4161-3506 or email peter@toucan.media.

FRUIT & PRODUCE

FRESH vegetables available, open Thursdays, Fridays. Laugeson's Gardens, Westmere Road.

WANGANUI EAST CLUB

MEMBERS' DRAWS

MUST GO!
SATURDAY 7 OCTOBER
\$1200 - 6.30pm
\$400 - 7.30pm

101 Wakefield Street, Wanganui East
Phone 06 343 7023

WANTED

ANY Cars Wanted Dead or Alive



TOP CASH PAID

\$100 - \$1,000 for small car
\$100 - \$7,000 for 4x4 UTEs
Vans, 4WD,
Trucks, Buses

We will beat any prices in the market by 10%



Ph Today **021 032 3006**
Text: **022 636 0807**

WANTED TO BUY

GINZA. Always buying, always selling. Good used furniture, antiques, China and collectables. Call Ginza 345-3154.

RANGES + dishwashers in reasonable condition etc. Can pick up. Please Ph: 344-7503 or 021-0823-6126.

URGENTLY wanted two female Chinese Quail. Also, Zebra Finches for sale. Phone/text 027-449-4161.

DOG WALKING SERVICE

DO you wish you could give your dog the exercise they need, without having to walk them yourself?
Call/txt 022-010-3577.

FIREWOOD FOR SALE

AFFORDABLE firewood starting from \$50 a cubic metre for sale. Please phone us on (06) 343-8466.



MEADS CUP SEMI FINAL WHANGANUI v THAMES VALLEY



SATURDAY, 7 OCTOBER, COOKS GARDENS
1.05pm - Gates open 12.15pm

Preview of this Saturday's semi-final game

By J B Phillips
Just like Frank Sinatra with his 1959 award-winning hit song "High Hopes", Whanganui's Heartland rugby side will go out confident of success in Saturday's Meads Cup semi-final against Thames Valley at Cooks Gardens.
The Swamp Foxes may have won 36-33 at the same ground on the opening day of qualifying in the 2023 Bunnings Warehouse championship two months ago, but since then the Butcher Boys have developed into strong title contenders.
Whanganui has averaged just over 40 points in the past five outings, headed by 55-19 to retain the Bruce Steel Memorial Cup against Horowhenua Kāpiti last weekend, to head off Valley for hosting rights for

the cut-throat semi-finals.
Thanks to a local union Heartland record five individual tries from enterprising centre Alekesio Vakarorogo, the Butchers have scored 38 tries and conceded 21 this season.
The Steelform-sponsored team has scored 264 points and conceded 150 (the least of any union) for an average game score of 33-20, second only to unbeaten national champions South Canterbury (341 for, 180 against, 43-23 average).
The highest scores are South Canterbury 56-0 v Buller at Geraldine and Whanganui 55-19 v Horowhenua Kāpiti here a week ago.
Vakarorogo's five tries in that match is just one behind the Whanganui all-time record set by Wanganui Pirates' winger Dick Philipson in a 56-3 win against visiting

Taranaki 104 years ago in 1919.
With 12 tries this season, Vakarorogo is also one away from equalling the NZ Heartland record of 13 set by Kaierau's Pati Fetuia in the inaugural 2006 national series.
Whanganui is playing with a lot more skill and determination and has learnt not to give away so many costly penalties, which affected the team during a disappointing start to the season.
Although pipped by the Foxes on August 12th, Whanganui finished with five tries apiece, but 21 points from winger Fletcher Morgan (two tries, a penalty and four conversions) clinched victory for the visitors.
Whanganui, who led 14-12 at half-time and later 21-19, had itself to blame for the first-round defeat.
It was a repeat of 2018, when Valley scored an unexpected 17-7 Meads Cup semi-final, and 2019, when the visitors won 36-30 at Cooks Gardens.
Since then, Whanganui has held off TV 20-15 at Paeroa in 2019 and 25-18 on Cooks Gardens last year in Meads semi-finals.
Although the Swamp Foxes have had a string of close shaves this campaign, as the average game score of 31-28 clearly proves, the side has matched Whanganui's record of suffering two narrow defeats, and one of them was 31-36 against top of the table South Canterbury at Whangamata.
Whanganui may have won 31 of 40 fixtures over the past 100 years, including 10 of 13 Heartland games, but Valley could prove troublesome in the



1.05 pm live televised match.
Form over the past five rounds, however, clearly shows the Butcher Boys have the strike power to beat any side in the championship.
Whanganui hooker Roman Tutauha will be playing his 100th game for the union provided his hamstring injury comes right, but mid-field back Samu Kubunavanua is out with a broken hand from last weekend.
South Canterbury is home to Ngati Porou East Coast at Pleasant Point (3.05 pm) in the other Meads Cup semi-final.
In the Lochore Cup semis, North Otago v Poverty Bay in Oamaru (2pm) and Wairarapa Bush play West Coast (2.30 pm) in Masterton.

AGC TRAINING FOR INDUSTRY
CHALLENGE YOUR FUTURE | WHAKAHEHA TO WERO
Proud to support WHANGANUI RUGBY

**Veterinary Technologies
Agriculture and Farming
Building and Construction**

For more information call 0800-348 8215
www.agchallenge.co.nz

Hireit LIMITED
PHONE 06 348 7384

Proudly supporting Whanganui Rugby

**CARS • TRUCKS • TRAILERS • UTES • VANS
12 SEATER MINI BUSES**

219 Guyton St, Whanganui. 0800 131 544
E: hireitlimited@gmail.com www.hireitrentalswhanganui.co.nz

SUMMIT Electrical

Top Service • Top Workmanship • Top Electricians

- 24/7 Service
- FREE Quotes
- Member of HAZARDCO
- For all your electrical requirements

Summit Electrical Services Ltd
0800 2 SUMMIT
0800 2 786 648
Todd Cowan - 022 325 0056

Member MASTER ELECTRICIANS
Electrical Contractors Association of NZ

STEELFORM WHANGANUI V THAMES VALLEY MEADS CUP SEMI FINAL

SATURDAY, OCT 7
COOKS GARDENS
GATES OPEN 12:15 PM
1:05PM KICK OFF

ADULT	\$10
STUDENT & GOLD CARD HOLDERS	\$5
CHILDREN 12 & UNDER	FREE
FAMILY PASS - 2 X ADULTS & 2 X STUDENTS	\$25
FAMILY PASS - 2 X ADULTS & 2 CHILDREN U12	\$15

WEAR WHANGANUI COLORS (BLUE, BLACK & WHITE) & GET IN FOR HALF PRICE

LET'S GET BEHIND OUR BUTCHER BOYS AND PACK OUT COOKS GARDENS

Property Brokers

Proud to support Whanganui Rugby

Best of luck for the semi final!

51 Taupo Quay, Whanganui 4500
Phone 06 345 7714
pb.co.nz
Property Brokers Ltd
Licensed REAA 2008

LIVE THE RANGER LIFE Ford

SCORE yourself the latest Next Generation Ranger

Brand New Design with Enhanced Powertrains
Including the All-New 3.0 V6 Diesel.

Our smartest, most capable, and most versatile Ranger yet

Good luck for the Semi Final!
Proud sponsors of Whanganui Rugby.

Wanganui Motors

CALL ME TODAY! TO ARRANGE YOUR TEST DRIVE
349 0930 | 0274 946 405
82 Ridgway Street, WANGANUI

Taking orders now!

www.wanganuimotors.co.nz

Murray O'Hara

Mayo

\$115.00 per lineal mtr

Solution dyed nylon
24oz carpet

Kensho

\$139.00 per lineal mtr

100% wool

Mayo

\$127.00 per lineal mtr

Solution dyed nylon
30oz carpet



GREAT RANGE OF STOCK VINYL



2m Wide - \$68 lineal mtr 3m Wide - \$102 lineal mtr

