



Phone 06 348 2099
www.aplusplumbing.co.nz

52 Ingestre Street, Whanganui. Phone 345 3666 or 345 3655, email rivercitypress@xtra.co.nz

Mayor's campaign goals - how are they going?

BY DOUG DAVIDSON

As part of his successful mayoral campaign last year, Andrew Tripe announced five campaign goals as follows:

1. To fight for local democracy
2. To promote a streamlined and efficient council
3. To back business and jobs
4. To promote better living and housing, and
5. To champion our future.

It has been only one year, but the RCP met with Andrew to find out what progress has been and is being made on achieving these goals. Under fighting for local democracy, Andrew campaigned against centralisation and control from the government, including their 3 Waters proposals. His position is clear. "We believe in more autonomy for local councils. We know the voice of our people. We listen, we consult and decisions that affect us are

best made by local government." It is much more than 3 Waters. It is also about the future funding of councils as "we are just about fully reliant on rates incomes. Rates are unacceptably high, and we must address this." One suggestion is for central government to return GST paid on rates, but Andrew says, "My preference is to partner with central government through mechanisms whereby we can earn back funds. We need economic and social initiatives to in-

crease revenue, leading to increased Government tax takes with a percentage returned to local government as reinvestment." "We are not looking for a handout but instead a devolution of decision making and sustainable funding." The Whanganui District Council is preparing such a partnership proposal, which Andrew says "would also have to include iwi and hapu." In the meantime, Andrew has been appointed to a Local Government panel to investigate the future for local government. The second goal of having a streamlined and more efficient council has been underway, with the CEO implementing efficiencies and cost savings. "While the public might not be aware of them - services have not been cut - without them the rates increase would have been even higher. We are now looking at version 2.0 for further efficiencies." In this context, Andrew points to the much higher rate increases in places such as South Wairarapa at 19.3%, New Plymouth at 12.4% and Wellington at 12.3%.

As part of the streamlining, Andrew wanted more visibility and transparency and has implemented community korero, live-streamed workshops and increased accessibility in person and on social media. He explains: "As a leader I lead the direction but serve the community." Symbolising his approach was to place his Mayoral car park at the end of the council parks with a disability car park closest to the entrance. His third goal, to back businesses and jobs, had led to Andrew setting up strategic business forums to cover the four well beings of economic, social, cultural and environmental needs with the long-term goal of planning for what Whanganui will look like by 2050. One initiative which is working already is the Mayoral taskforce for jobs, using government funding to get more youth into jobs. "It has already been incredibly successful getting unemployed youth into jobs, and we have received funding for the next two years as well." Better living and hous-



Whanganui mayor Andrew Tripe

ing was his fourth goal. He says, "The way we treat the most vulnerable is how we need to measure ourselves. Addictions and social divisions are getting worse, and although we don't have enough funds to focus on these issues, we must promote social cohesion. We need to find ways to bring suburbs together and involve the communities in the process." He admits that he doesn't know how to do it and smiles when he says, "It's okay not to know the answers to everything." Championing the future of Whanganui provides some interesting responses. Andrew points out that Whanganui has high sunshine hours, gas infrastructure and reasonable wind. We need to bring

them together. "Already the Council is discussing possible installations of wind turbines and large solar panel sites. He also states, "There is strong interest from an operator for running a four-star hotel in Whanganui with discussions at an advanced state." The day following our interview, Andrew attended the Aotearoa Hotel Industry Conference in Wellington. There are also discussions on improving Whanganui transport connections. "It is clunky to get out of Whanganui no matter what mode we use. We can be a lot smarter in adapting a multi-modal transport approach." Looking back over the past 12 months, Andrew says, "It is the busiest role I have had in my life, and I've had some big and busy ones. But family comes first and I am always there to watch our kids play sport." Andrew strongly believes that "Whanganui is or can be the greatest place to live on Earth. We need to dare to dream."

BEDROOM Specialists

OPEN 7 DAYS
Locally owned & operated
151 St Hill Street, Wanganui
Phone 06 345 6084

Harcourts
Whanganui

Looking to sell?
call me
Paula Siddells on
027 500 1242
for an award winning sales agent who gets results!
#siddellsells

Paula Siddells
Licensed Real Estate Agent REAA 2008

LA Z BOY

Comfort Sale
25%
off all La-Z-Boy

DIMOCKS HOMESTORE
100% BedsRus PH 06 348 4877
190 VICTORIA AVE, WANGANUI **OPEN 7 DAYS**

HOLLANDAUTOMOTIVE
Drive with Confidence

FREE WOF
when you roll a double 1 with the dice at time of payment otherwise \$50

- AUTOMOTIVE REPAIRS
- SERVICING • TYRES

Phone 06 777 3052
141 London St, Whanganui
info@hollandauto.co.nz
www.hollandauto.co.nz

Find us on Facebook
ZiP afterpay

Campus Open Events

Scan the QR code to register a time to come and see us.

ENROL NOW

We have courses in:

- Animal Care
- Rural Animal Technician
- Carpentry Level 3
- Agriculture Level 3 - Dairy

AGC TRAINING FOR INDUSTRY
CHALLENGE YOUR FUTURE | WHAKAAHIA TO WERO

Call 0800-348 8215 www.agctraining.co.nz

Check out what's in this week's RCP

I confess to being suitably impressed with how the Mayor Andrew Tripe has been moving to fulfil his campaign goals. (See our front-page story) The council's approach comes across as constructive and innovative. I am also excited about possible developments in the areas of solar power, wind power and a four-star hotel.



Doug Davidson
journalist@rivercitypress.co.nz

Among the political stories – the last before the election, there are two about parties that you might not even have heard about – the Animal Justice Party, which has a local candidate (page 21), and The Opportunities Party (TOP) and the sad case of their only election sign being ripped down (page 21). At least that provided the opportunity for a brief explanation about what TOP stands for. Congratulations to

Duncan Sinclair and Black Pine Architects for becoming the first local company to gain B. Corp accreditation (page 6). It is a sign of the company's commitment to sustainability and the environment.

If you love classic motorbikes, need a calendar, and want to support a good cause, buy a calendar with pictures of local motorbikes and support Hospice in the process (page 2).

Calendar of classic motorcycles on sale for Hospice

The Wanganui Classic Motorcycle Club decided to create a calendar to record, through photographs, member's bikes in a way others could enjoy by framing the photographs or collecting them.

The members then unanimously agreed that all profits should go to a local charity — and chose Hospice Whanganui as that charity.

Most of the photographs were taken at Paloma Gardens, where Clive and Nicki Higgie have their gallery of classic motorcycles – 'Moto 71 – The Art of the Motorcycle.' Visitors are welcome to experience the garden and view motorcycles for a small fee.

Clive Higgie is the President of the Club and says it was formed to "enjoy preserving and riding all motorcycles over 25 years old. Whenever we display the motorbikes, we get a great deal of interest from young and old alike."

H&A have printed the calendars and already 200 of them have been committed. The Palmerston North Classic Motorcycle Club is keen to buy and sell. The first print is for 400, and members are confident that they will sell out with the possibility of another print run.

The calendar is on sale for \$25 at motorcycle outlets in Whanganui, at Hospice Whanganui shops and at Paige's Book Gallery, 60 Guyton Street. They will also be available at the Hospice Christmas Night Market and the Boxing Day Cemetery Circuit. If the 400 are sold, it would mean around \$5000 being raised for Hospice Whanganui.

Kelly Scarrow from Hospice says, "We really appreciate the willingness of the Classic Motorcycle Club to support the work of Hospice. We thank them for their generous gesture in choosing Hospice to receive these funds."



Wayne, John (Club members), Eric Hallett (Manager H&A), Kelly and Clive.

NZ Defence Force team trains at Whanganui Hospital



Working as a team comes naturally to both health workers and the New Zealand Defence Force (NZDF), and at Whanganui Hospital the two are joining forces in a training exercise for the military personnel on 7 and 8 October 2023.

The NZDF Surgical Team, composed of Regular Force and Reserve Force clinical specialists, will be at Whanganui Hospital, to complete some elective surgical procedures on adult patients.

It's all part of the NZDF's continuing development of its field

surgical capability. A vital part of that capability is ensuring that surgical specialists are familiar operating with each other as a team and will use elective/planned surgery.

"Our NZDF surgical team, of around 25 personnel, are each fully qualified and independently credentialed medical specialists in their own right. We want to enhance their confidence as a team, ensuring the best care and outcome for those they treat," Major James Josephs, from Linton Military Camp said.

As always, patient safety is paramount, and the

surgical team will work within their approved specialty and scope in their usual clinical practice area. All certification, credentialing, and indemnity requirements will be fulfilled prior to participating.

The patients being operated on have all consented to having the surgeries performed.

All follow-up care of the patients who receive surgeries and procedures will be done by Whanganui Hospital's surgical team, who will also work with the NZDF team throughout the weekend.

LETTER TO THE EDITOR

Funding for Somme Parade repairs

Dear Editor,
A concern to me is the River Bank on Somme Pde. Several years ago, we in Aramoho had about two years of "Stop/Go" traffic lights and one way roading access, due to a large slip near Quick Avenue. Now we have another one further down Somme Parade, costing approximately eight million dollars to fix!! I thought Horizons Council had responsibility for riverbank protection and stabilisation; the Manawātū River seems to get attention; what about maintenance, protection and a financial contribution to our river problems? — Especially after a previous slip. The ratepayers here are faced with a very expensive repair bill, so some help from Horizons would be appreciated.

- Fi Donne (Edited)

Wanganui Classic Motorcycle Club "Swap Meet" this Saturday to help injured club member

The Wanganui Classic Motorcycle Club has organized 'The Mike Ryan Family Benefit Automotive Swap Meet' for Saturday, October 14, from 12 noon to 3pm. It will be on Ridgway Street opposite Marshall Motorcycles, right on the Start/Finish line of Wanganui's Famous Boxing Day's Cemetery Circuit.

Fellow club member Mike Ryan was seriously injured in a car versus bike accident recently.

All items have been donated, with the entire proceeds going to the family.

A Coffee Cart and BBQ will be on site.



'Making every deal a big deal'

Moving times, moving values

For a FREE no obligation appraisal give Bruce a call.

Bruce McGhie
Commercial Sales Consultant
M 027 333 2587
E bruce.mcghie@pb.co.nz



pb.co.nz
Property Brokers Ltd Licensed REAA 2008

Property Brokers®

MACELL ELECTRICAL LTD MAINTENANCE

Specialists in Home Security

- Residential, Commercial & Industrial Electrical Services
- 24 Hour Surveillance • Alarm Response
- Controlled Access • Cardax
- Home & Industrial Security
- Security Monitoring
- CCTV Installation and Servicing

Chris Rennie 027 443 0430
Phone 06 345 4183
Email chris@macell.co.nz



Why are New Zealand's ancient animals so extraordinary?

Early Childhood Education degree available from Whanganui UCOL campus from next year

This month's Nature Talks will be given by Terry Thomsen, author, lecturer and freelance tour guide based in Christchurch. His talk, titled A Closer Look at New Zealand's Deep Endemics, will be given on Tuesday, 17 October in the Davis Theatre, Whanganui Regional Museum, starting at 7:30 pm.



Kea, together with kākāpō and kākā, originate from an ancestral parrot that split from the main parrot lineage more than 50 million years ago.

Photo credit: Terry Thomsen

They are relicts of the earliest 'primitive' frogs that branched off the main lineage of frog evolution some 200 million years ago and have several distinctive physical and behavioural features that reveal their ancient origins. Today, only three species survive, and all are very rare.

Terry's talk will also consider the origins and uniqueness of several of our native birds, including kiwi and the extinct moa, our large parrots — kākāpō, kea and kākā — and the New Zealand 'wrens'. The tiny tītīpounamu or rifleman and the pīwauwau or rock wren are the sole survivors of this last

group, a sister-group to the world's songbirds, which today constitute over half of all bird species.

Terry is the author of *The Lonely Islands: The Evolutionary Phenomenon that is New Zealand*. This is a comprehensive account of the origins and evolution of New Zealand's extraordinary native animals and plants and why they are worth conserving. Copies will be available at the talk for purchase at a discounted price of \$35, payable by cash or

through special arrangement.

Nature Talks is a series of bi-monthly talks offered by three local environmental groups on topics related to New Zealand's environment, natural history and their conservation. The talks are normally held on the third Tuesday of every alternate month. Attendance is free, although a koha is always welcome. For more information, contact Peter Frost (birds.whanganui@gmail.com, phone 343-1648).



ECE Lecturers, Jessica Hemi (left), and Mariana Raukawa.

UCOL | Te Pūkenga have announced that they will be offering a three-year Te Tohu Paetahi Akoranga: Bachelor of Teaching (Early Childhood Education) at their Whanganui campus from 2024.

This course offers a clear pathway for ākonga mā (learners) who want to develop their skills in Early Childhood Education and become a registered Early Childhood Teacher. It is a step up from the one-year New Zealand diploma currently offered.

While it is aligned with the diploma it offers more practical hands-on experience. For past graduates of the diploma programme, there will be a transition plan to upskill.

Each week students will spend two days in class and then two days at an

ECE centre. Once a year, they will also complete a four or five-week placement practicum throughout different types of centres – ranging from Kindergarten and Childcare centres to Montessori, Kōhanga reo and Pasifika centres.

The degree course should be popular as there are many career prospects for ECE teachers and relievers in Whanganui at the moment and centres are always looking for qualified graduates.

A big advantage of the UCOL | Te Pūkenga degree course is the face-to-face learning as opposed to online learning.

For more information about Te Tohu Paetahi Akoranga: Bachelor of Teaching (Early Childhood Education), visit the UCOL | Te Pūkenga website.

Would you know what to do if someone is injured?

First Aid Training

Whanganui: Tuesday 7 Nov or Monday 4 Dec

N.B. Businesses are welcome to attend our Public Classes, all NZQA Accredited!

Electrical Workers EWRB Competency Training

Wednesday 1 November

Book online at: www.links-ltd.co.nz

LINKS

We train, you gain!

Freephone: 0508 487 246

training@links-ltd.co.nz
www.links-ltd.co.nz

THOMPSON PLUMBING & GAS LTD

Master Plumbers

- General Maintenance Plumbing
- Hot Water Systems
- New Builds and Renovations
- Heating
- Programmed Maintenance
- Septic Tanks and Wastewater Systems
- Drainage and Unblocking
- Rain Water Tank Installation
- Gasfitting Service

06 345 0924
office@thompsonplumbing.co.nz
thompsonplumbing.co.nz

WANGANUI AERO CLUB

Experience the joy of flight!

Flights from **\$220**

30 minute trial flights

Contact us on 06 345 0914 or email: info@wanganuaeroclub.co.nz

Find us on Facebook

Gonville superValue just what you need

THIS WEEK'S SPECIALS

Frozen Lamb Loin Chops **only \$15.99/kg**

\$20 Trays Pork Slices or Steaks (1/2 price only **\$10.00 each**)

WEEKEND SPECIAL

only \$14.99/kg Frozen NZ Scotch Fillet Roasts

2.5kg Bags Pork Bones only \$9.99

Five \$5 Meat Trays still only \$20.00

PRODUCE

Capsicum **only \$2.49 each**

Telegraph Cucumber **only \$2.99 each**

NEXT WEEK'S SPECIAL - STARTING 16.10.23

Frozen Scotch Fillet Steaks **only \$15.99/kg**

\$15 Trays Diced Beef **only \$10.00 each**

All items while stocks last (no rainchecks). Get in early.
47 Abbot Street, Gonville. Ph 06 344 3002
Open 7am-8pm - 7 days



BIGGEST RANGE, BEST PRICES, MOST FUN

Come instore and check out our huge range!

<p>McGregor's Seeds Assorted</p> <p>\$3.19</p>	<p>Paper Seed Pots - 4pk</p> <p>\$5.99</p>	<p>Garden Planting Accessories</p> <p>\$2.49 - \$10.99</p>	<p>McGregor's Weedout</p> <p>\$16.99</p>
<p>Cross Stitch Assorted Designs</p> <p>SALE Was \$19.99- now \$14.99</p>	<p>2 in 1 Diamond Art & Paint by Numbers 2 Designs</p> <p>NEW \$24.99</p>	<p>Beautiful 3pc Fragrance Sets 5 Different Sets</p> <p>NEW \$16.99</p>	<p>Beautiful Sun Catchers 5 Designs</p> <p>NEW \$29.99</p>
<p>Fruiti Ukulele</p> <p>NEW \$9.99</p>	<p>Flamingo Jeep</p> <p>NEW \$24.99</p>	<p>Sky Patroller</p> <p>NEW \$24.99</p>	<p>Police Boat</p> <p>NEW from \$29.99</p>

Great Range for **Halloween** instore now

			<p>from \$2.99 to \$39.99</p>			
--	--	--	--------------------------------------	--	--	--

Sunny's Whanganui 161 Victoria Ave, Whanganui 06 348 4700

Check out www.sunnys.co.nz for more great deals

Join Our Club, Get \$5 Store credit for every \$65 spent in store

Prices & Promotions valid 12/10/2022 - 22/10/2022 (until stock lasts). Discounts & Offers are based on original retail prices. Images and Colour may vary from actual product. Not all products are available at all stores.

Call for a new charity to receive proceeds from 'Running of the Balls'

The inaugural Running of the Balls down Drews Ave during the lunchtime of the Soapbox Derby race at Vintage Weekend this year was a great success, with \$10,000 raised for the selected charity – Mangatepopo Camp in Tongariro National Park.

The event was the brainchild of Juan and Janelle Coffey, who own JJ Roofing in Ridgway Street. As Juan says, "We wanted to give back to the community and brainstormed a

range of ideas."

The name is a play on the famous 'Running of the Bulls' which takes place in Pamplona, Spain. It just so happens that red and black are the colours for JJ Roofing.

They checked out possible hills, and when Plumber Dan, who was running the Soapbox Derby race, invited them to use Drews Ave during the lunch break, the best spot was sealed. They deliberately kept a few hundred tick-

ets over as they expected many in the crowd would want to buy on the spot – and they were right.

They chose Mangatepopo Camp as it was going through a revival. It had been near to closing, but a new board and custodian had turned it around and schools were returning for their camps. The camp now needed a supersized camp oven, and the Running of the Balls provided it.

Juan and Janelle want to choose a different charity each year to "spread the love." It needs to be a registered charity in the Whanganui region and preferably for a tangible item like the camp oven that can be bought and used without delay.

They would also prefer the charity to be smaller in nature, making the likely \$10,000 a significant grant.

They are asking charities interested in being this year's recipients to go online – www.jjroofing.co.nz – and download the application form. The willingness and ability of the charity to help sell the tickets is one of the factors to be considered. Applications are now open, and will close on October 30. Shortlisted charities will be contacted at the beginning of November and a decision will be made by November 13. Tickets will go on sale on November 27 and the event will take place on January 22. 1000 tickets at \$10 each



Juan and Janelle with the billboard from this year's event.

will be sold through outlets such as JJ Roofing, My Plumbing Depot, Property Brokers, and The Tool Shed. They will also be sold from the Saturday

Market on 13 and 20 January.

1st place will win \$1,000 from JJ Roofing, 2nd place, \$500 from My Plumbing Depot and 3rd

place, \$250 from Barred Up Scaffolding. Of the 1000 balls, 980 will be red, and 20 will be blue. Blue balls will win a spot prize.

Another good use for the RCP



Another good use for the RCP

Marina Belsito is studying art at UCOL and came to the RCP asking to use old copies of our paper for a project requirement.

It was for an assignment to meet the 2nd year requirements for a project which,

- uses organic or inorganic materials – thus copies of the River City Press.
- had to be reliant on the architecture of the building,
- which explores or disrupts our sense of perception of space, and
- be over one metre in size.

Check out the picture of Marina's installation. She says, "I felt the colours went perfectly with the environment and the sound it made when walking through was lovely. Thank you again for letting me use your paper that I diligently read each week."

VERY COMPETITIVE RATES

We offer

- Home Help
- Personal Care
- Sleepovers

General Home Help / Laundry/Meals
Shopping / House Cleaning / Driving
Companionship / Respite Care
Fulltime Care



"We'll give you the help that you need, and the care you deserve"



06 343 1711 or 021 045 2299
chrissycleanncare@xtra.co.nz

LET'S TAKE BACK OUR COUNTRY



NEW ZEALAND
FIRST

nzfirst.nz



Authorised by H Howard, 41 Jervois Road, Ponsonby



Black Pine Architects are first local company to receive B Corp Certification

B Corp Certification is a third-party certification standard that evaluates a company's social and environmental impact. It means that rather than solely focusing on profit maximisation, they consider the impact of their operations on their workers, customers, suppliers, community and the environment.

The 'B' stands for Benefit. It is about showing how you are benefitting all your stakeholders and the planet beyond just making a profit for your

shareholders.

While there are three nationally based companies with offices in Whanganui, which have B Corp Certification – the Co-Op Bank, Kiwi Bank and Kathmandu – and another which does considerable work in Whanganui – Scafit (for scaffolding) – Black Pine Architects are the first local company to achieve this certification.

It is not easy to achieve either. It is a customized assessment based on industry, size and geography. There are 70 different

questions depending on these variations.

Duncan Sinclair of Black Pine Architecture says, "I have been moving towards this holistic approach for some time trying to meet Living Building Challenge standards, an international sustainable building standards approach, making sure building materials were chemical free, whether buildings were an appropriate land use in that area, trying to obtain as many resources from the site as possible and ensuring appropriate disposal of waste."

The first step towards B Corp Certification is to measure your carbon footprint – your use of electricity and waste. Then there is your vehicle use especially if driving long distances.

The process to achieve certification is "intense, involving not just you but the community and the environment. It is reassessed every three years."

"You have to walk the talk. Black Pine now uses an electric car. Should you have limited liability? Are you responsible to all your stakeholders? Should you change banks or electricity providers?"

The process took Black Pine 18 months, but that was partially because demand for certification is growing. The assessment is out of 200 and you need to score a minimum of 80. Duncan says "that is hard to get. To score a 100 would take a miracle." (Black Pine scored over 90)

Why do it.

B Corp Certification is possibly the most powerful way to build credibility, trust and value for your business that people want to work for, buy from and invest in.

'Purpose Washing' and 'Green Washing' are both rife but people are increasingly better at recognising it. B Corp Certified businesses walk the talk.

It helps to motivate



Reshma and Duncan (colleague Emma absent)

your staff.

- It makes economic sense.
- It is the right thing to do.

- Over 5,000 businesses worldwide are B Corp certified.

The assessment is free to take. It can be done under ten hours and applies to all sizes of companies. You pay only to have your certification verified by a B Lab Standards Assessor. You also need to pay an annual fee based on your revenue and location.

B Corp Certification is being promoted by Business Whanganui and Duncan hopes that one day "Whanganui will have the highest number of B Corp Certified businesses in New Zealand."

Local MP votes early

Local MP and Labour Party candidate for Whanganui voted early on Monday at the Cook Island Hall on Puriri Street.

The campaign is hotting up with more visiting politicians and more sign waving at intersections. On Wednesday at 3pm Steph was supported by Labour Party members and Deputy Prime Minister Carmel Sepuloni doing sign waving at the London Street/Carlton Ave roundabout.

Both Green Party and National Party supporters have been on the corner of Dublin Street and Victoria Ave also sign waving – but not at the same time.

There is no excuse for people not to be aware of the need to vote.



Steph at the ballot box

ASK A PROFESSIONAL

Flea Treating Your Pets

As the weather warms up it is important to get on top of flea control in your pets as summer is the highest risk period for flea infestations. It is best to treat all pets in the household with a spot on or tablet treatment; these vary in terms of how long they protect your pet for so always check the label to make sure you are treating frequently enough to keep your pet safe this summer.



WANGANUI VETERINARY SERVICES

35 Somme Pde, Wanganui, Ph. 349 0155



TRAINING FOR INDUSTRY
CHALLENGE YOUR FUTURE | WHAKAAASHA TO WERO

JOIN US FOR AGC TRAINING'S

OPEN DAYS

Are you curious about what AGC Training has to offer in 2024?

Don't miss our Campus Open Events over the next 10 weeks!

We're here to show you why we are the "Best Kept Secret in Whanganui/Okia."

- Agriculture Level 3 Dairy - 40 Weeks
- Carpentry Level 3 - 40 Weeks
- Animal Care Level 3 - 26 Weeks
- Rural Animal Technician Level 5 - 40 Weeks
- Education to Employment In-School Support Programs
- Driver Licensing Support

First run of dates -

When: Tues 17 Oct | Wed 25 Oct | Thurs 2 Nov | Sat 13 Nov

Where: AGC Training Campus - 312 Number 3 Line, Okoia 4582

Campus Open Event #1



REGISTER HERE

0800 3488215

info@agctraining.co.nz

www.agctraining.co.nz

Guided Campus Tours

Interaction with our dedicated staff

Chauffeur-driven tours to our campus sites

- Main Office
- Carpentry Site
- Milking Shed
- Static Machinery Display
- Animals in the House Paddock
- + Sausage Sizzle and Farm-Fresh Milk Sampling



Monster Car Boot Market at Faith City Church

Organ Recital this Sunday

The Friends of the Christ Church Organ has New Zealand organist Max Toth playing at a special organ recital this Sunday, October 15, in the Church at 2pm.

Max, who is currently the Organ Scholar at the Wellington Cathedral of St. Paul, is currently studying an undergraduate BMus degree in organ performance with Douglas Mews at Te Kōkī New Zealand School of music, Victoria University of Wellington.

Max has had the opportunity to perform in concerts around New Zealand and Europe, with particular highlights being performing at the Gedächtniskirche in Berlin and playing continuo and organ with the WCO, APO and NZSO.



New Zealand organist Max Toth to perform on Sunday

Scholarship by the Wellington Cathedral of St Paul. Max is looking to progress further within his organ studies and exploring a wider and more obscure range of organ repertoire while developing his continuo technique. Entry at door \$25, and \$20 Friends of the Christ Church Organ and FREE for under 19's.



Organisers Ropata Collins and Bill Costello

Faith City Church at 127 Springvale Road is organising a Monster Car Boot Market in their large car park area for Saturday, 21 October from 8am to 12noon – and they are looking out for more car boots or stall holders.

The cost is only \$5. There is a limited supply of tables available for a further \$5. Some car boot holders are planning on giving their proceeds to the church.

The church is fundraising to pay for a new roof, which will be expensive as the roof area of the

church complex is large. The church itself was built in 1978 and so is getting on for 50 years.

You can probably sell almost anything out of your boot. It could be plants, craft work, nic naks, gift lines, DVDs/books and all that stuff in your house that you no longer need, from your children's bikes/scooter/roller-skates/surfboard that they have grown out of to the furniture you have stored away or the clothes that you bought but haven't really worn.

As they say, 'Someone's

junk is someone's treasure.' Another relevant saying is "Clean out to Clean in."

One thing to note is that there is no Eftpos available, so cash is required.

There will be a BBQ cooking tempting sausages and, more than likely, a coffee cart. Some boot holders might even be selling cakes, preserves, or jams.

You need to register your car boot stall. To do so text Bill Costello on 027 340 9444. And if you don't have something to sell – come along to buy.

FOR THE BEST HIRE EQUIPMENT IN TOWN

MARQUEES • MACHINERY HIRE PARTY HIRE & SALES



HARRISON'S
HireMaster
WANGANUI

26 CHURTON STREET PH 345 7017



CONCRETE SACRIFIER



1.5 TONNE DRUM ROLLER



360KG PLATE COMPACTOR

www.hiremasterwanganui.co.nz



MAD BUTCHER

NEW ZEALAND'S BUTCHER Since 1971

FROZEN LAMB UNDER HALF PRICE!

Legs of Lamb &
All Lamb Chops

only

\$8.99 kg

Product of Australia

Afterpay & ZIP available instore & online for home deliveries and click & collect orders - check out www.madbutcher.co.nz/wanganui/




Specials available from Monday 9 October to Sunday 15 October or while stocks last - Limits may apply.

402 Victoria Avenue, Whanganui - Phone 348 0196
This store has a full selection of Fresh NZ beef, lamb, pork & chicken at all times.

RIVER CITY PRESS, THURSDAY, OCTOBER 12, 2023 - 7

Buildings to be lit up for Dyslexia Awareness

Dyslexia Awareness Month is recognized every year worldwide in October, with the aim to support and create awareness for those with dyslexia. Every year, countries around the world light up to show solidarity for dyslexia, including several city councils around New Zealand lighting up in aqua (or teal) for dyslexia for the first time. Nicky Collins, a Resource Teacher of Literacy at Tawhero, who also has a diploma in Literacy with distinction in Dyslexia has approached the Whanganui District Council and they have agreed to light up the War Memorial Centre and the Royal Whanganui Opera House, on Tuesday, 17 October through to Friday 20 October in aqua. Nicky asks the question – “So why should we light it up aqua and show solidarity?” Dyslexia is a learning disorder that affects mil-

ions of people worldwide, and Dyslexia Awareness Month serves as an opportunity to raise awareness and promote understanding of this condition. The dyslexia statistics vary; however, it is commonly thought that between 5 - 15% of the population is affected. New Zealand, if we are a nation of 5 million, potentially has a whopping 750,000 affected by dyslexia. By lighting up in aqua, we can demonstrate our support for those with dyslexia and help raise awareness of this often misunderstood condition. This simple gesture can help to educate others about the challenges faced by people with dyslexia and promote understanding and inclusion. Our participation can also help to inspire others to get involved and support the cause.

Get ready to Shake Out next Thursday, October 19, 9.30am



DROP > COVER > HOLD

Next Thursday, Oct. 19 - 9.30am
NATIONAL EARTHQUAKE DRILL
AND TSUNAMI HĪKOI

Shake Out happens across the world to remind people of the action to take during an earthquake — that is Drop, Cover and Hold.

It is also an opportunity to practise a tsunami hikoī (evacuation walk) if you live in a coastal area.

How to ShakeOut/Me pēhea te Whakahaumaru Before the drill:

- Know your tsunami evacuation zone. Make plans for a tsunami hikoī if you are in a coastal area.
- Learn about the earthquake and tsunami risk in your area and other parts of New Zealand.

The Drill itself:

ShakeOut is a self-run drill. You can start it in whatever way works for you. You could:

- use a bell, whistle or alarm.
- play the New Zealand ShakeOut Announcement over your PA system.
- shout “EARTHQUAKE DRILL”, or
- tune in to the Shout Out Facebook livestream.

Drop, Cover and Hold for 30–60 seconds:

- **DROP** down on your hands and knees. This protects you from falling but lets you move if you need to.
- **COVER** your head and neck (or your entire body if possible) under a sturdy table or desk (if it is within a few steps of you). If there is no shelter nearby, cover your head and neck with your arms and hands.
- **HOLD** on to your shelter (or your position to protect your head and neck) until the shaking stops. If the shaking shifts your shelter around, move with it.

While you are doing the drill, take note of what might be happening around you in a real earthquake. Think about what you might need to do to prepare for a real earthquake.

Groups, businesses and schools are encouraged to sign up on the Shake Out website: <https://getready.govt.nz/en/involved/shakeout/how-to-shakeout..> You can enter into a draw to win a prize package. You will also be sent information about preparing for an emergency.

WE ARE OPEN ON LABOUR DAY!



YOUR LANDSCAPING INSPIRATION STARTS RIGHT HERE THIS LABOUR WEEKEND!

Get everything you need and more to turn your garden into a land to be proud of at Sort It Out Landscape Supplies.

- Bulk Landscaping Supplies
- Bagged Garden Products
- Wrought Iron Features
- Certus Pavers
- Outdoor Art

Sort It Out
 LANDSCAPE SUPPLIES

19 Rakau Rd (off Mill Rd), Wanganui.
 Tel. (06) 345 5494 or 027 641 6245
www.sort-it-landscape.co.nz
 Hours: Sat 8-4pm, Sun 9-3pm, Mon-Fri 7.30am-5pm

Don't forget, we are open on Labour Day too!

GET READY TO Shake Out™

OCTOBER 19TH 9.30AM



NATIONAL EARTHQUAKE DRILL AND TSUNAMI HĪKOI



Whanganui District Emergency Management

SIGN UP TODAY
SHAKEOUT.GOV.TZ

**1.99% + GST
commission, plus a free
marketing package.**

**Sell your home this
Spring with Sims.&CO**

**The answer is black and
white.**

Offer valid until 30/11/23, Terms & conditions apply

Jude Sims

M 021 624 456

E jude@simsandco.nz

Jeff Sims

M 027 441 4139

E jeff@simsandco.nz

PART OF THE ANDCO GROUP
ANDCO MEANS MORE

hello@simsandco.nz
www.simsandco.nz
facebook.com/simsandcorealty

Sims.&CO
ANDCO REALTY 16 LTD - LICENSED REAA 2008 **REALTY**



Vintage Car Club
of NZ
(Wanganui Branch)

6th National Commercial Rally

LABOUR
WEEKEND
October 20-23

Whanganui hosting 6th National Commercial Rally over Labour Weekend

You might ask –“what is a commercial vehicle?” It could be a motorcycle with a parcel box or a sidecar carrier. Or it could be any utility or truck from small to large. Other possibilities include fire engines and ambulances. Whatever ‘commercial’ vehicle it is, expect to see a great range at the 6th National Commercial Rally over Labour Weekend in Whanganui, organised by the Whanganui Vintage Car Club branch.

The event will begin with a get-together on Friday evening, October 20. Saturday events include a short drive around Whanganui East and Okoia, followed by afternoon tea, and in the evening a meal and social time.

Sunday will be the main rally day on the western side of Whanganui, with dinner and prizes in the evening. On the Monday there will be a get-together

breakfast at Caroline’s Boatshed, followed by another short run.

Close to 60 entrants are coming from around the country including, Northland, North Shore, Auckland, Bay of Plenty, Waikato, Gisborne, Taupō, Taranaki, Manawatū, Horowhenua as well as from the South Island – Nelson, Marlborough and Ashburton.

Commercial vehicles have a long history in the country with many coming in as a chassis, engine, and sometimes part of a cab. Local firms built vehicle bodies to suit their business use. Many vehicles were converted, often by cutting off the rear passenger seats and installing a flatbed with sides. Farmers especially often cut down older cars to use on the farm.

The next stage was to import utes or trucks, which in turn were built into service cars and or buses.

In the Vintage Car Club database, there are over 1000 vehicles noted as ‘commercial.’ Some are complete and registered; others are being restored, while still more are donor vehicles for parts.

In the Whanganui Branch there are over 25 members with commercial vehicles of all ages from Veteran (Pre-World War 1) up to 1993 – that is over 30 years old. The branch says, “We plan for all types of vehicles and over the three days of Labour weekend, hope to see them driving around our district.”

The oldest commercial vehicle is likely to be a 1912 Ford. The club has a 1927 Chevrolet.

There will be opportunities for the public to see a full display during the weekend. Possibly the best times and spots include:

- Saturday afternoon 12.30pm to 2.30ish at the Cornmarket Reserve (off Dublin Street).



The oldest vehicle entered is a 1912 Ford Model T. It is owned by Chris and Leon Lawrence who are coming Waikato. They join the Whanganui annual and Burma rallies regularly.

- Sunday afternoon 1pm to 2.30 at a Competitive Field Test at the Williams Domain, next to the club room in Whanganui East.

The club has received significant support from local businesses, especially the Barracks Sports Bar, where the functions on Friday and Saturday evenings, will be held. The main rally dinner will be at the Racecourse.

MECHANICAL RESTORATIONS VINTAGE & CLASSIC SPARES (1980)

For Engine & Auto Parts (1912 - 1997)

English • American • Continental
Australian • Japanese

Veteran • Vintage • Classic • Modern

Bruce Ardell

RD7, Fordell, Wanganui
Phone / Fax (06) 342 7713

Proud to be
a sponsor of the
VCC 6th National
Commercial Rally

BALGOWNIE CRANES LTD

Proud to support the
Vintage Car Club
Wanganui Branch



PHONE 344 6774 or call
RENEE 021 143 0321

FURNIQUE

Furniture
Coating
Specialists



Proud to support
the
Vintage Car Club NZ
Wanganui Branch

160 Somme Parade
Wanganui
Phone 343 7500

WANTED
FOR SELLING TOO
MANY HOUSES

RUMOUR TO BE WORKING
FOR HARCOURTS WHANGANUI

LAST SEEN DRIVING THIS VEHICLE



WHANGANUI - BULLS - HAWERA - MARTON - BRUNSWICK - RAETHIHI



Rob Bennett

Harcourts

Whanganui

Rivervicinity Real Estate Licensed REAA 2008

Mobile 021 071 0016 Business 06 348 4444
Email: rob.bennett@harcourts.co.nz

Like you, we're proud of our Vintage Cars too!



Our TV star 'Agnie' 1935 Austin Six
An authentic hearse by Alpe & Saunders Coachwork Ltd, London

1937 Studebaker President & Superior Hearse
Our latest addition, an Authentic Stude' Factory Hearse

Proud to be a sponsor of the VCC 6th National Commercial Rally

"Proudly 100% Wanganui owned by Jim & James Forrest"

DEMPSEY
& FORREST

Phone (06) 349 0202
208 Guyton Street, Wanganui



Vintage Car Club
of NZ
(Wanganui Branch)

6th National Commercial Rally

LABOUR WEEKEND
October 20-23



Proud to be a sponsor of
the 6th National
Commercial Rally



ROB O'KEEFE
JOINERY
Joinery | Kitchens | Stairs
Timber doors & windows
Commercial work
06 344 5040 | okjoiner.co.nz
368 Heads Road, Wanganui



1927 Chevrolet truck

NU & IMAGE HAIR

Proud to support the VCC 6th National Commercial Rally

1 Springvale Road, Wanganui
Phone 06 345 0247

WELFARE FRIENDLY FARMING
HIGGINS
POULTRY FARM

AND **WHOLESOME** NEW ZEALAND



Your local supplier of SPCA approved Organic,
Free Range and Barn eggs

Proud to
be a member
and support the
Vintage
Car Club
Wanganui
Branch



Find your nearest retailer by calling 06 345 6608

107 Rapanui Road
Westmere



Farm shop opening hours:
Tuesday to Friday, 8am to 5pm
Saturday, 8am to 1.30pm

WWW.WHOLESOMENZ.COM



The SPCA Blue Tick guarantees high welfare standards for animal food products such as eggs. This cruelty-free farming certification programme provides consumers with certainty when purchasing food products in New Zealand. Barn and free-range farming systems for hens are the most humane, and are the only systems approved by the SPCA Blue Tick scheme.

Hospice Whanganui
Te Kahu Pairuri
 ki Whanganui

**Hospice Antiques
 and Collectables Auction**

Sunday 15 October, 10.30am
 at Hospice Whanganui, 78 Virginia Rd

World Hospice and Palliative Care Day - October 14

World Hospice and Palliative Care Day takes place on October 14 with the goal of improving the quality of life for people affected by serious health problems. Those that have life-limiting illnesses have the right to be cared for in the way that best suits their needs, and this day emphasizes that.

There hasn't always been a system in place to make sure that people's last days were comfortable. In the nineteenth century, the action of hospice care was taken on primarily by women. They were religious and philanthropic volunteers. The attention hospice care would achieve in the next century would be because of these women.

By the twentieth century, more hospitals with hospice care were established. They be-

came so vital that many facilities received more beds, and more people joined to help the cause.

Today, there are thousands of hospice agencies across the globe, and it continues to grow. The first World Hospice and Palliative Care Day was held in 2005, and it's been going strong ever since.

Palliative care is more than end-of-life care, it is care to help people live well in the time that they have left.

Each year, it is estimated over 56.8 million people, including 25.7 million in the last year of life, need palliative care. Around 78% of those people live in low and middle-income countries.

Hospice New Zealand points out that "Hospice is a holistic wrap around service of care. It's not just a building and it's not just doctors and nurses.

Hospice is a philosophy of care. We appreciate that everyone is an individual with their own wants and needs. What matters to them matters to us and through the holistic nature of care, we explore all aspects of a person – their physical, emotional, social and spiritual.

It is about living every moment – right to the end, well."

Everything they provide is free of charge.

As an essential health service, the majority of funding comes from Government, the remainder comes from community fundraising. In 2022 hospices needed to raise over \$94 million nationally.

Hospice Whanganui

Whanganui's hospice service was founded by the Wanganui Hospital Board, but right from inception the aim was to locate the service in the



Art Deco uranium glass vase, 15.5cm high to be auctioned this weekend at Hospice Whanganui.



Chip carved kauri music cabinet up for auction.

community, not in the hospital.

By 1976, beds were made available in Newcomb Ward at Wanganui Hospital specifically for the terminally ill. In 1980 the hospital board agreed to investigate the feasibility of establishing hospice care in Wanganui. Betty Bourke chaired this committee and with Jonathan Hartfield (Medical Superintendent) they became the driving force to enable the change on how the terminally ill were cared for.

The Wanganui Regional Hospice Service was formalised in 1981 with Hospital district nurses providing care to terminally ill patients in

their homes.

Finally in 1991, Tom Joll (General Manager of Wanganui Base Hospital) was appointed Hospice Manager and his vision to have a separate integrated specialist facility outside the hospital was put in action with Richmond House on Anzac Parade leased.

In 1997 Jonathan Hartfield and David Dickson were appointed medical officers for Wanganui Regional Hospice Service, and the following year 2.5 hectares of land on Virginia Road was purchased. By 2000, about \$1 million raised toward the cost of the new building. It was opened in 2002.

RICHARD GEDYE LTD
PAINTING & DECORATING
 Est. 1998

Proud to support
Hospice Whanganui

Qualified Tradesmen
 Work Guaranteed
 Painting & Paperhanging
 Interior & Exterior
 Domestic & Commercial
 Wanganui Owned & Operated

MOBILE 0274 407 169
 PHONE 06 348 5543
 EMAIL richard@richardgedye.co.nz
 PO Box 7137 Wanganui

www.richardgedye.co.nz



LOADERS
 WANGANUI

www.loaders.co.nz
 Proud to support
HOSPICE WHANGANUI

- Drainage • Roothing
- Earthworks
- Traffic Management
- Hydro Excavation
- Machinery Hire & Transport

06 348 9034 info@loaders.co.nz



CIVIL CONTRACTORS

dalglish | ARCHITECTS



Proud to support Hospice Whanganui with award winning architecture

06 347 9401 dalglisharchitects.co.nz

Paul Neal & Associates

ACCOUNTANTS

WANGANUI

*Making Accounting
 less Taxing*

Proud to support HOSPICE WHANGANUI

Unit B - Suite 3 Wicksteed Terrace

06 348 9989

pneal.ltd@gmail.com

EASTSIDE DAIRY

OPEN 7 DAYS
 5.30am - 8.30pm

Proud to support HOSPICE WHANGANUI

- Irvines Pies 2 for \$3.90
- Scoop Ice Creams & Frozen Berry Yoghurt
- Rivermill Bread 3 for \$6.50
- Cow & Gate 2 Ltr Milk 2 for \$7.80
- 110 Containers of loose sweets
- Novelty Choc Bars \$1.50 King Size \$2.50

63 Jones St, Wanganui East
 Phone 343 9598

Hospice Whanganui
Te Kahu Pairuri
 ki Whanganui

**Hospice Antiques
 and
 Collectables Auction**
 Sunday 15 October, 10.30am at
 Hospice Whanganui, 78 Virginia Rd

*Hospice antiques and collectables
 auction this weekend*

The Hospice Whanganui Antiques & Collectables Auction is coming up this weekend and it is their major fundraiser for 2023.

There is a huge array of unique and precious items available — truly something for everyone. All items in this auction have been donated to Hospice, either through their three op shops or specifically for this auction. As Kelly Scarrow from Hospice says, "Our community is incredibly generous, and the items within this auction is testament to that."

The catalogue is now available online via their website: <https://hospicewhanganui.org.nz/support-us/antiques-collectables-auction/> (It is also printable for your convenience).

If you are unable to attend the auction at Hospice Whanganui, 78 Virginia Road, they are accepting absentee bids again via the website or at the viewing times, which are as follows:

- Saturday 14th October 10am – 2pm
- Sunday 15th October 8am – 10am, with the auction commencing at 10.30am.

There will also be a coffee cart available on Sunday morning.

Any queries, please contact Kelly Scarrow at kellys@hospicewhanganui.org.nz or 027 304 2126.

All proceeds from the event go to Hospice Whanganui to help provide free specialist palliative care for patients and their whānau in our community.



Getting ready for the auction: Neil Jones (Photographer), Brian Hayward (Auctioneer) Kelly, (Hospice) and Steve Hampson (Advisor)

Pair of large leadlight ceiling lights with fittings 50cm wide, Nile.



Crown Lynn Swan - Large Male (Makers mark on base)



Fender Model 1000 - Roc Pro - has been serviced with valve replaced.



When the leader comes to town



National Party leader Christopher Luxon (right) with Carl Bates, and supporters

By Carl Bates, National Party candidate for Whanganui

National Party leader Christopher Luxon spent a few hours in Whanganui on Saturday as part of his whistle-stop tour of New Zealand as the election draws nigh. So did the National Party's campaign bus, the Back On Track Express.

The Whanganui River Market was his major port of call, a great opportunity to show Luxon how significant the rural sector is to Whanganui. He was able to observe, in between conversations with locals, our rapidly growing paddock-to-plate economy.

We stopped at Chef's Choice, where restaurant-quality beef and lamb are sold to the public from a small refrigerated truck. I pointed out Salad Brothers from Waverley, who I visited recently, where Chris and Marianne took over a run-down hydroponic farm and now grow boutique lettuces, which are a big seller at the market. We also picked up a blue bubble tea from The Riverside Bubble Tea Bar and the young entrepreneurial team behind it.

National's relationship with the rural and business sectors is an enduring one. National has always encouraged farmers to produce quality food and fibre and has supported our farmers to become more sustainable – to be among the most carbon efficient in the world. Unfortunately, farmers, business owners and everyone they employ are suffocating under an avalanche of red tape. All this results in an underperforming economy and a higher cost of living for New Zealanders.

Christopher Luxon, though, was impressed by the innovation and entrepreneurship he saw in Whanganui, like the young woman branching out to sell Bubble Tea. A National government will support and encourage innovation and remove red tape to ensure a growing economy and get inflation under control.

Luxon was a popular visitor to the Whanganui River Markets. However, if you want to see Christopher there in Whanganui again as Prime Minister, you have to get out and Party Vote National and help us Get This Country Back On Track.

Sophie wins Junior NZ Country Music Entertainer of the Year



The New Zealand Country Music 2023 Entertainer of the Year awards were held in Auckland on Oct 7 and 8. Sophie Toyne, of Whanganui, was the overall winner of the Junior section.

Allan Tong Ltd
 Since 1945

Pleased to support HOSPICE WHANGANUI

Phone (06) 345 2743
 Ron Bakker 021 449 173, Fax 06 345 8550
 Email: allan.tong@xtra.co.nz

MEMBER Master Painters New Zealand

Supporting Hospice in our Region.

2024 DIARIES HERE NOW!

Toners, Office Furniture, Packaging & Cleaning Supplier

Locally owned since 1949
 Member: Office Products Depot of NZ

www.meteor.opd.co.nz
 PARK AT THE DOOR

METEOR OFFICE PRODUCTS DEPOT
 we love your work and we love Whanganui

27 Ridgway Street, Whanganui 06 349 2630 orders@meteoropd.co.nz

Whanganui Girls' College
Where Girls Shine

Small Classes + Individualised Attention = Great Results

2024 ENROLMENTS NOW OPEN

Contact us to view the College and Hostel facilities.

Ph 06 349 0944
 Email: admin@wgc.ac.nz
 21 Jones St, Whanganui
 Web: www.wgc.ac.nz

Like us on Facebook

St Mary's overall winners in 2023 Dance Sport Challenge

Each year, dance tutor Mark Glastonbury runs the Inter School Dance Sport Challenge in which selected representatives of currently eight schools compete in two types of dances – the waltz and the Cha Cha – at the War Memorial Hall. St Mary's School was the overall winner, but the top awards were widely shared out.

Each year, dance tutor Mark runs in each school, of 6 to 8 lessons of 45 minutes each in two different age groups – years 5/6 and 7/8. The focus is on maintaining timing and pattern for the dance, having the right posture, and not looking down – as well as having fun. Mark says, "I teach over 600 students and 160 of them are selected to be part of the Inter School Dance Sport Challenge.

The schools are Ohakune, Churton, St Mary's, St Georges, Kaitoke, Fordell, Carlton and Mosston, and there is a trophy, a slash, and a certificate for the winners in each of the two dances for each of the age groups. Then there are two special awards – determined by a "secret judge in the audience" for 'The Lady of Elegance' and the 'Gentleman of Distinction.'

Peter's Church Hall, and he has decided to offer a challenge – spend seven to eight months doing after-school training and get ready to compete at a national level. The next national championship is over King's Birthday weekend in Porirua. There is a category called 'Recreational' complete with a national title, specifically for dancers relatively new to the sport.



There is room for more schools to join the Dance Sport Challenge, and now is probably the best time to discuss it with Mark,

and have it placed in the school's calendar. You can contact him at mark.glastonbury@hotmail.com.

Proudly supporting Glastonbury Dance



ENROL TODAY
 (06) 343 9406 or email office@churton.school.nz
 Burmah Street, Aramoho, Wanganui

By the end of their time at school, especially those that go up to years 7 and 8, the students might have had four years of dance teaching and are becoming very good. Mark says, "Dance appeals to a wide variety of boys and girls. Frequently, I will see a quiet student, possibly not interested in their studies, blossom when it comes to dance."

Many of the students choose to continue dance lessons with Mark at his dance studio in St



We are very happy to support **GLASTONBURY DANCE**

52 Arawa Street, Ohakune 4625
 Phone: 06 385 8384



BEGINNERS BALLROOM / LATIN 8 WEEK COURSE

Tuesday 24 October
 6.30pm

No partners required

Mark
 027 441 5880
 mark.glastonbury@hotmail.com
 www.glastonbury.co.nz



Carlton School

Proud to support **Glastonbury Dance**

He kōtuinga mahi iti, he hua pai-ā rau
 Small ripples create big waves

Phone 06 345 0336
 99A Carlton Avenue, Wanganui

HOUSE OF TRAVEL



Come and see our friendly team today!

69 Taupo Quay, Whanganui
 Phone 06 345 8822 Email: whanganui@hot.co.nz

Real Estate with Steven & Jared
 "Brothers in Real Estate"



Supporting Mark Glastonbury on and off the dance floor!

Selling fee 2% + GST (Terms and conditions apply)

0800 176 4321

stevenandjared@arizto.co.nz

Licensed Salespeople (REAA 2008)



Smarter Real Estate
 arizto.co.nz



CHILDRENS (YR 5, 6, 7, 8) BALLROOM / LATIN 8 WEEK COURSE

Starting **Monday 23 October**
 4.15pm - 5pm

Registrations to Mark
 027 441 5880
 mark.glastonbury@hotmail.com
 www.glastonbury.co.nz

RECYCLINGWEEK

OCTOBER 16-22

An initiative to help promote a waste-free future for New Zealand

Recycling Week is an annual initiative to raise awareness and educate New Zealand

on best practices for waste minimisation and recycling, creating a waste free future for

New Zealand.

Launched in 2013, an ever-increasing number of organisations (schools, corporates and everyone in between) are having fun and learning by taking part in the week.

Each day of Recycling Week features an easy-to-remember theme that will challenge and encourage you to re-think your waste minimization and recycling behaviours.

Procurement Monday

Purchase only what is made able to be recycled, reused or

repurposed. Think about the implications of the following:

- Recycling one tonne of paper saves about 250,000 litres of water.
- Manufacturing plastics from recycled plastics saves 70% of energy requirements to make virgin plastic produced from fossil fuels.

- 20 cans from recycled material requires the same energy as one from raw materials.

Waste-Free Tuesday

Over 12 million tonnes of waste go into NZ landfills each year. Sadly 75% of it could

have been recovered, reused or recycled. Just how long does it take for products to break down in a landfill?

Check these figures:

- Plastic bottles: 450 years
- Glass: Never
- Aluminium cans: 80 to 200 years
- Disposable nappies: 250 to 500 years

Reusable Wednesday

Opt for long lasting reusable alternatives. Avoid single-use waste such as drinking cups, take away containers, cleaning and bathroom products, food wraps.

Rinse and Clean Thursday

Contamination is the enemy of recycling. This includes dirty containers as well as any material put into the wrong recycling area.

Reflection Fridays

Reflect and make a commitment.

Spring Clean weekend

Recycling is great but turning your unwanted items into something new and useful is even better.

The benefits of thrift shopping

Secondhand shopping is a way to reduce the waste in the landfills. These are eco-friendly ways to recycle clothes and benefit the environment. Secondhand clothing stores are also a way to support your community. Most thrift stores are non-profit and create jobs for people.

Buying and reusing second-hand clothes can have significant environmental and economic benefits. By reducing the demand for new clothes, individuals can reduce the carbon footprint associated with producing new clothes, conserve natural resources, and reduce the amount of waste generated.



Help make a difference by taking your recyclable items to the Whanganui Resource Recovery Centre



The Renovators Centre

Come and see us for all your renovating needs!

54 MARIA PL EXT
WANGANUI
GINZA BARGAINS
COMPLEX

Ph 348 8208

G.O.M.E.

Grumpy Old Men
Enterprises
Charitable
Trust
support
Recycling

Re Dress

FABULOUS!!!!

50% OFF
EVERYTHING

61 Ridgway Street
Ph 348 7939



Te Ope Whakaora

Please phone 345 2779 to arrange for your goods to be collected.

FREE PICK UP TRUCK SERVICE
Monday to Saturday

STORE HOURS
Monday to Saturday, 9am - 5pm

428 - 432 Victoria Avenue

Caring for People, Transforming Lives,
Reforming Society

Molten **MM** Metals
Limited

DON'T SELL YOUR SCRAP
UNTIL YOU'VE TALKED TO US!

We Buy All Scrap Metal,
Check Our Prices!

Proud to support
Recycling Week

Phone 06 349 0476
350 Heads Road, Wanganui
www.moltenmetals.co.nz

Here's a better way to get rid of unwanted clothing.

DONATE TO...

Zest
FOR MISSION

163 Victoria Ave, Wanganui • Ph 345 2139 (extn 2)

Empowering
people,
encountering
lives.



Thierry
Le Swinger
LED Lamp



\$459

Piha 5 piece Bar Setting



Was \$2699

2 only

NOW \$1889

Bahamas Outdoor



Chair **\$879**

3 seater **\$1439**

2 seater **\$1199**

EARLY BIRD

OUTDOOR SAVINGS

on NZ's finest range of quality designs & styles.



Mesa 6 Piece Low Outdoor Dining Suite



Was \$5499 **NOW \$4399**

Geneva 3 Piece Patio Setting



Was \$999

2 only

NOW \$899

Jimmy
Pod Chair



\$1149

Gasmate Obsidian Square
Gas Fire
Table



\$1259

Bluebell Dining Chair



Was \$199

NOW \$159

Eden 1300 5 Piece Setting



Was \$5399



NOW \$4319

Tahiti Outdoor Chair



Was \$799

NOW \$639

Heatstrip Portable LPG Heater



\$999

Boston Sunlounger
Gunmetal or White



Was \$549

NOW \$439

Saligna 2.6m Hex Umbrella



base not included

\$699

Eden Pro 2.7m Umbrella



base not included

Was \$1149

NOW \$919

100%
BedsRus

DIMOCKS HOMES

Kalo Outdoor Bean Chair



5 colours

\$240

Malabar 3 Piece Outdoor Suite



Was \$1747

NOW \$1397

Matzo 5 Piece Outdoor Setting - White or Gunmetal



Was \$2395 **NOW \$1916**

Edison the Petit LED Lamp



\$149

Bolleke Hanging LED Lamp



\$179

Bali 3 Piece Outdoor Suite



Was \$3297

NOW \$2637

Amalfi 5 Piece Corner Suite



Was \$4599

1 only

NOW \$3199

Bali 2200 6 Piece Outdoor Setting



50 Year Accoya Timber Warranty

Was \$9574 **NOW \$7659**

Chapala Flamma Chiminea



\$209

Piha 7 Piece Dining Setting



Was \$2699

2 only

NOW \$1889

Fatboy Pupillow Outdoor Bean Bag



\$599

Tulip 3.3m Cantilever Umbrella



Was \$1699

NOW \$1359

base not included

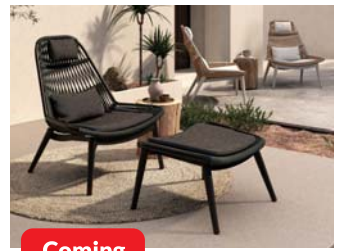
Baja 740 Table and Cabo Chairs x 2



Was \$1697

NOW \$1357

Alcala Lounge Chair



Coming soon!

\$1199

Marrakesh 5 Piece Dining Suite



Was \$3249 **NOW \$2599**

Café 3 Piece Setting



\$590

Shangri-La 2.7m Umbrella - Red, Lime, Black



Was \$299

NOW \$239

base not included

STORE

**PH 06 348 4877
190 VICTORIA AVE, WANGANUI**

**OPEN
7 DAYS**

Whanganui's aiming for ninth Heartland Rugby Championship

The Finals

Whanganui will be seeking a ninth Heartland rugby championship title when it endeavours to dethrone South Canterbury of the Meads Cup at Temuka on Saturday.

The Steelform-sponsored Butcher Boys have by far the proudest record since the national competition started in 2006, winning six Meads and two Lochore Cups from 14 Heartland finals.

South Canterbury, on the springboard of claiming a potential third successive Meads Cup title, will be playing in a 10th Heartland final, having twice won each of the trophies.

The following is the record of the finalists going into Saturday's title decider—

WHANGANUI

Meads Cup
2006 – Lost to Wairara-



pa-Bush 14-16 at Cooks Gardens.
2007 – Lost to North Otago 8-25 at Oamaru.
2008 – Beat Mid Canterbury 27-12 at Cooks Gardens.
2009 – Beat Mid Canterbury 34-13 in Christ-

church.
2010 – Lost to North Otago 18-39 in Oamaru.
2011 – Beat East Coast 30-10 at Cooks Gardens.
2012 – Lost to East Coast 27-29 at Ruatoria.
2015 – Beat South Canterbury 28-11 in Timaru.
2016 – Beat Buller 20-18 at Cooks Gardens.
2017 – Beat Horowhenua Kapiti 30-14 in Levin.
2019 – Lost to North Otago 19-33 in Oamaru.
2022 – Lost to South Canterbury 36-47 at Pleasant Point.
Lochore Cup
2014 – Beat North Otago 14-12 in Oamaru.
2021 – Beat North Otago 22-16 at Cooks Gardens

SOUTH CANTERBURY

Meads Cup
2015 – Lost to Whanganui 11-28 in Timaru.
2018 – Lost to Thames Valley 12-17 at Timaru.
2021 – Beat Thames Valley 35-16 at Timaru.
2022 – Beat Whanganui 47-36 at Pleasant Point.
Lochore Cup
2007 – Lost to Poverty Bay 35-38 in Gisborne.
2011 – Lost to Poverty Bay 22-49 in Gisborne.
2012 – Lost to Buller 28-31 at Westport.
2013 – Beat Buller 17-10 in Timaru.
2019 – Beat West Coast 23-19 in Timaru.

Sports Talk with Jared Smith
Steelform Whanganui vs South Canterbury

We have arrived — the Temuka Domain on Saturday, Steelform Whanganui vs South Canterbury for the Meads Cup final.

This will be the first grand final rematch in consecutive seasons for the Meads Cup since 2011-12, when Whanganui and Ngāti Porou East Coast traded the top prize of the Bunnings Warehouse Heartland Championship between them at Cooks Gardens and Ruatoria, respectively.

And if Whanganui can carry the day, they will have finally broken the greatest winning streak

in NPC history.

Since the last round-robin game of 2019, South Canterbury have rattled off 30 consecutive victories in this competition, winning that year's Lochore Cup and then back-to-back Meads Cups' in 2021-22.

Heck, you can even chuck in five more undefeated games — four wins and a draw — against Heartland teams from the South Island during the 2020 'Covid' season when a full competition wasn't possible.

Any sides beat the Cantabrians in First Class matches in the past four years? Only the Ranfurly Shield holders Hawke's

Bay and Wellington.

Last year in the Meads Cup final at Pleasant Point, Whanganui looked like they might snap the streak before it managed to overtake their then-Heartland record of consecutive wins, set from 2015-17.

They were leading 22-17 at halftime, but a yellow card and big burst of scoring by the host's powerful forwards put South Canterbury up 47-22 — a late rally by Whanganui not enough to prevent a 47-36 defeat.

That really has become the Cantabrians modus operandi — five times this season, they've trailed at

the break but then taken control for a solid 15-20 minute period where they score points and get straight back for more.

There has been an arrogant swagger to it as well — Whanganui will well remember that three South Canterbury players raised their hands in celebration before putting the ball down to score in last year's final.

Both their No8 Siu Kakala and our centre Alekesio Vakarorogo have scored 13 tries in this competition; just one try behind the record set way back in the inaugural Heartland season of 2006 by dynamic Whanganui outside back Pati Fetuati.

Only Whanganui have won the Meads Cup three years in a row (2015-17), so there's both records to be made and defended in the deep south on Saturday.

C'mon the Butcher's Boys!

Steven Schwamm AREINZ & Jared Smith

0800 176 4321

✉ stevenandjared@arizto.co.nz

Licensed Salespeople (REAA 2008)

Selling fee 2% + GST (Terms and conditions apply)



Smarter Real Estate
arizto.co.nz

Hireit
PHONE 06 348 7384 LIMITED

Proudly supporting Whanganui Rugby

CARS • TRUCKS • TRAILERS • UTES • VANS
12 SEATER MINI BUSES

219 Guyton St, Whanganui. 0800 131 544
E: hireitlimited@gmail.com www.hireitrentalswhanganui.co.nz

Terry Arbuckle
REMEDIAL MASSAGE THERAPIST & EXERCISE CONSULTANT

Proud to support Whanganui Rugby

Phone/text 027 205 6520
terryarbuckle@xtra.co.nz
At the Cycle Sport Building, 51 Wilson St.
(next to Velo Ronny's Bicycle Store)

WP WANGANUI PLUMBING LTD

We are proud to support our community

Locally owned and operated and involved in all aspects of the trade for 51 years.

168 Somme Parade
Ph (06) 343 9763
www.whanganuiplumbing.co.nz

ELITE MECHANICAL & ENGINEERING SERVICES LTD
"Your One Stop Engineering Shop"

Elite Mechanical and Engineering Services cuts a fine figure in Whanganui trade circles

- Jobbing Work
- Installation of Machinery
- Factory & Field Maintenance
- Designer/AutoDesk Inventor
- Machining & Fabrication
- ASMI Certified Welders
- Preventative Maintenance
- Full Sheetmetal Workshop
- Structural Steel
- 250 ton Press Break Service
- Food Processing Machinery
- Conveyor Systems
- Waterjet Cutting
- Stainless Steel Specialists
- Aluminium Fabricators & Welders
- 1x3, 3x5 & 1x10 ton Gantry Cranes

No Job is too big or too small

Call us on 06 344 4108 or drop into ELITE at 437 Heads Road, Whanganui
enquiries@eliteengineering.co.nz
www.eliteengineering.co.nz

Proudly supporting Whanganui Rugby

LIVE THE RANGER LIFE Ford

SCORE yourself the latest Next Generation Ranger

Taking orders now!

Brand New Design with Enhanced Powertrains

Including the All-New 3.0 V6 Diesel.

Our smartest, most capable, and most versatile Ranger yet

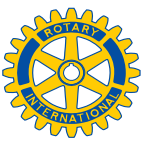
Good luck for the Final!
Proud sponsors of Whanganui Rugby.

Wanganui Motors

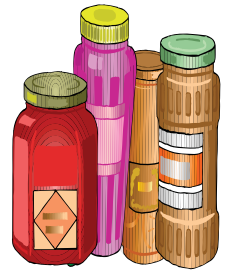
CALL ME TODAY! TO ARRANGE YOUR TEST DRIVE
349 0930 | 0274 946 405
82 Ridgway Street, WANGANUI

www.wanganuimotors.co.nz

Murray O'Hara



FOODBANK DRIVE



NEXT THURSDAY, OCTOBER 19
from 6.00pm - Listen for the Siren!
Buy some extra groceries this week to donate.

Buy extra groceries this week to give to City Mission's Foodbank Drive if possible

Will Whanganui public again respond with great generosity for this year's foodbank drive? Over thirty years ago, this annual event was initiated by the Ro-

tary Club of Wanganui South and Wanganui North Rotary Club assumed the role in 2017. This year's event, as usual, will take place the Thursday before



Shelves are starting to empty at the City Mission Foodbank



ROTARY CLUB of WANGANUI NORTH

Proud to run the
**City Mission
FOODBANK
DRIVE**

**THURSDAY
19 OCTOBER 2023**
www.rotarywanganuinorth.nz



Proud to support the
FOODBANK DRIVE

Phone 06 348 2099
www.aplusplumbing.co.nz



kaupapa whānau - thriving children, flourishing families

Proudly supporting the
**City Mission
Foodbank Drive**

Our support network is here to help all whānau

- Social Work
 - Family Harm Programmes
 - Programmes for Parents
 - Advice and support information for families
- We're here to talk
Tel 06 345 1636
- jigsawwhanganui.org.nz

Ph 06 345 1636 | Suite 10, 236 Victoria Ave, Whanganui
Email: admin@jigsawwhanganui.org.nz



136 Guyton Street, Wanganui

Kerri-Ann 348 0339
Bruce 344 5160



in association with **MORRIS & SON BUILDERS - WANGANUI**

Proud to support the
City Mission Foodbank Drive

Labour Weekend on 19 October, from 6pm. That day, 40 vehicles will be assembled with volunteer drivers, mainly Rotarians, but usually greatly assisted by firms like Loaders, Edmonds Painting, Plumber Dan, Placemakers, Resene, Wanganui Towing, Thompson Plumbing and Mediaworks. All vehicles have signage and sirens affixed and set forth with 2-foot-soldier each, 80 in all senior Whanganui Collegiate pupils, per vehicle to cover every street in the greater Whanganui area. The collectors are out for between 1-2 hours, returning to the drive-through drop-off point between Farm Supplies and P O Collectibles, where the goods are sorted by more volunteers, including City Mission helpers and more Collegiate pupils, another group of up to 50 in all.

All we ask is that the public place food out at their letterboxes from 6pm or wait until they

hear the siren attached to the collecting vehicle and bring out the food donation.

Up until the impact of COVID-19, the annual food donations had remained fairly constant, with an average of 370 boxes of food for the years 2017 to 2019. From 2020 to 2022, the generosity of the public has markedly increased the amounts of food given, averaging 510 boxes, indicating a strong public awareness of the needs of the fellows and the less fortunate. This

year, with inflation badly affecting household budgets, we wonder if the result will match those last years, but we hope so. We need to have our food bank store bulging again! Certainly, the demands on the City Mission Food Bank have never been greater than right now. Whanganui North Rotary, aided by the generosity of Collegiate, P N' Save, Display Signs, the press and radio and all those volunteers and helpers, are proud to be again part of this iconic effort.

Liquid Edge

SUPPORTING CITY MISSION WITH GREAT DESIGN
BECAUSE WE THINK THEY'RE PRETTY AMAZING.

LIQUIDEDGE.CO.NZ ☎ 345 7267



Te Ope Whakaora

We are pleased to support the
**City Mission
Rotary Foodbank
Drive**

4 - 6 Indus Street
Phone 345 2343

Caring for People, Transforming Lives,
Reforming Society



Service and Excellence You Can Trust!

Pleased to support the
Foodbank Drive

Corner of Wilson & Ridgway Streets
P 06 345 9059 • whanganui@flooringdesign.co.nz



Waterproofing | Plastering | Specialist Coatings

Proudly supporting the
City Mission Foodbank Drive

127A London St Wanganui
06 3488077/ 0276311608
www.edmondspainting.co.nz



Animal suffering driving force behind Animal Justice Party Candidate



Sandra with Boots, her 15-year-old rescue Bichon dog.

Sandra Kyle is the Whanganui candidate for the Animal Justice Party, and animal suffering is the driving force that keeps her going. "I have to do everything I can to try and create a better world for them, and a world that is better for animals will be better for people too."

A dedicated activist for decades, Sandra is well known for her vigilance at slaughterhouses, where she sings to comfort the animals. She firmly believes that the 21st century provides alternatives to farming animals for food.

The AJP's policy of transitioning to plant-based farming and a more sustainable circular economy. She would love to see New Zealand "become a trailblazer for the entire world the way we have done before."

While the majority of AJP policies are focused on animals, they also address the environment and climate change. As part of this approach, Sandra emphasises the need for transformation. "Not more of the same, or less of the same, or just the same – but different."

She is concerned about the impact of climate change and points out how climate change weather events, from floods to fires to draughts, "are not just affecting people, but also billions of animals."

She is realistic about the number of votes the AJP will attract, saying, "I know I'll come in as a resounding last, but my primary attention is to raise awareness for animals, and for policies that will make New Zealand a better country."

"I would love for our brave, transformative, compassionate, fledgling party to do reasonably well in this election, and am asking for party vote AJP."

The Animal Justice Party Aotearoa New Zealand (AJPANZ), to give it its full name, is a registered political party advocating non-violence towards animals, sustainability and a move away from animal-based agriculture.

It was founded after discussions with the Animal Justice Party in Australia, who also gave permission to use the name. It was registered in New Zealand on 16 August 2023.

Bridge club results

Whanganui Bridge Club
Bridge Results Week ending 8 October.

Monday Spring Pairs: N/S: 1. I Kelly, V Bartrum 56.82 2. C Brown, K Coombe 56.53 3. T Jones, S Brotherton 54.83 4. S Benefield, N Kennedy 52.56 E/W: 1= J Huwlyer, J Tripe 59.90 1= J Richardson, B Annear 59.90 3. J Glenn, H Elgar 54.95 4. J Delaney, O Jones 53.39.

Tuesday Spring Pairs: N/S: 1. S Benefield, D Newman 64.04 2. J Newman, G Handley 60.38 3. K Verhoek, D Nightingale 55.96 4. J Rapson, L Vodanovich 52.88 E/W: 1. A Thirtle, S Baron 61.15 2. B Franklin-Brown, P Paterson 56.92 3. C Raisin, P Verhoek 54.62 4. N Kennedy, N Bartrum 53.65

Wednesday Spring Pairs: N/S: 1. G Mooney, S Rainey 66.09 2. M Ruby, L Eyles 54.36 3. T Gunasekara, B Rhodes 50.18 4. J Lupton, R Terrey 49.00 E/W: 1. M Ewing, M Hicks 57.91 2. K Rainey, A Hodges 54.55 3. B Charteris, J Kay 49.18.

Wednesday Social: N/S: 1.N Gale, C Pepperell 56.25 2. W Duncan, R Story 50.69 E/W: 1. S Benefield, S Poff 54.17 2. J Dodds, W Pedley 52.08

Friday Social: N/S: 1. J Rapson, B Jones 60.71 2. S Benefield, T Watson 59.07 3. S Pedley, N Kennedy 56.73 4. C Harding, N Bartrum 55.22 5. S Yeoman, J Glenn 55.08 6. J Scott, S Poff 53.16 E/W: 1. Wilma Duncan, D Haynes 55.91 2= S Watson, S Walkinton 55.63 2= J Firmin-Jone, D Price 55.63 2= I Newbold, J Dodds 55.36 5. L Goodrich, I Back 52.16 6. M Wyley, J Delaney 52.34.

UCOL Whanganui celebrates record scholarship evening

On Thursday UCOL | Te Pūkenga celebrated the "most scholarships UCOL had ever given out in one ceremony at the Whanganui campus," Bronwyn Paul, Whanganui Campus Manager says.

"We had ten donors contribute a total of 47 scholarships. They're all local donors we've worked with in the past. One donor alone, Akoranga Education Trust, gifted 23 scholarships". "Akoranga Education Trust also made contributions for the graduation valedictorian and for hardship."

Bronwyn highlighted the

significant impact of the hardship funding, particularly for nursing ākonga on placements.

"It makes a huge difference for our nursing ākonga who can't work part-time to earn extra income. They can use it at any time during the year to ease their financial stress."

During the ceremony, three scholarships were awarded to exceptional Pasifika nursing ākonga, Charlene McGechan, Eseta Mataitoga, and Tiare Maea-Wylie.

"As well as being an A-grade student, Charlene has mentored first-year



Left to right: Charlene McGechan, Tiare-Manea Wylie and Kalisi Savu. Charlene and Kalisi are the donors for the Loloma Pasifika.

The Toppling of a TOP election sign



The replacement sign.

A resident of St Johns Hill had an election sign on their property promoting the TOP (The Opportunities Party). It was probably the only TOP sign in Whanganui. Within three days, it had been cut off and taken away.

Why? We'll never know, but unless someone is collecting political signs as souvenirs, it doesn't make sense.

TOP is described as a centrist political party so much so when their leader suggested to the National Party that they step aside in the seat of Ilam to give TOP a real chance to win a seat and to be part of a coalition with National. The National Party leader rejected the idea, suggesting that TOP was more aligned with Labour.

They come across as a very serious party fulfilling their mantra of having 'evidence-based policy.' Some of these policies include:

- Restructuring income tax to include a tax-free threshold on income up to \$15,000 progressing to a 45% rate for income beyond \$250,000.
- Introduce a land value tax of 0.75% on urban residential land, designed to decrease land speculation.
- From 2026, replace the Jobseeker Support with a universal basic income for all adults between the ages of 18 and 65.
- Require a deposit of 100% of the value of an existing home when purchased for investment purposes.
- Have a Teal Card for those under 30 which will provide fully funded public transport and healthcare.
- Legalise, regulate and tax the sale and supply of

Pasifika nursing ākonga as part of a Whanganui pilot programme, which could be adopted by Te Pūkenga throughout New Zealand. She's taught Fijian women from the community to cook budget-friendly meals, sent used UCOL stoves to a remote Fijian school and a charity that feeds underprivileged children, and even raised funds to support the rebuild of her Fijian village after Cyclone Harold.

"With her fellow nursing ākonga, Valisi Savu, she also started the Loloma Pasifika Scholarship in 2021. It was awarded to Tiare Maea-Wylie this year to support the cost of her studies.

Eseta Mataitoga received the Pati Family Scholarship

for her work in the community and church.

"A new award - The Sandy Dobbin Accounting Memorial Award for our Chartered Accountant ākonga – was presented. Sandy was one of the founding members of Akoranga Education Trust. He died a few years ago and Akoranga dedicated a \$2,000 memorial award in his name. On top of this, they also give an additional \$2,000 each to the two top-performing students.

Alongside Akoranga Education Trust, nine other local organisations also contributed: Arthur Wheeler Leedstown Trust, Bromar Trust, George Boulton Trust, Lions Club, Loloma Pasifika, Pati Family, Whanganui Combined Rotary Clubs, Whanganui Educa-

tion Trust, and Chartered Accountants Australia NZ which is supported by 10 Whanganui Chartered Accountant Partner companies.

The highest achieving award went to second-year bachelor of Nursing student and mum-of-three, Angela Munro. She was followed in second place equal by Camila Garner and Niomi Belton.

"I love these times of year - scholarships and graduation. It's rewarding helping create these special moments where we can celebrate our ākonga for all their hard work. With almost 50 scholarships presented, it seems they're all going above and beyond this year," says Bronwyn.

UP COMING EVENTS

Speakeasy with Papaiti Gin
21 October 2023

Waimarie cruise Hosted by LADs Brewing
9 DEC 2023

A cruise with Santa
17 DEC 2023

Murder Mystery Cruise
13 JAN 2024

Jazz Cruise
19 JAN 2024

Vintage Cruise
20 JAN 2024

Jazz Cruise
20 JAN 2024

SteamPunk Cruise
21 JAN 2024

WWW.WAIMARIE.CO.NZ

1920s Cup for fastest hill climb for heavy weight bikes



Warren with the Cup

Warren Lee is writing a history of the Whanganui Motorcycle Club from 1914 to 1964 and was speaking with a local expert, Joe Lett, who told him that his wife, Barbara, had kept a box of old cups.

One was inscribed, once Warren had been able to rub away the black, as follows: 'Presented to the Whanganui Motorcycle Club by Marks & Bott for the fastest hill climb for Heavy Weight Bikes.'

There was also the name of one winner, perhaps the only one – E Boyd – but after checking with Hinemoa Boyd, it was definitely not the late Ed Boyd. It did note that E Boyd rode a 'Super Chief Indian.' Unfortunately, there were no dates.

Warren was able to find out that Marks & Bott had a motorcycle shop in Whanganui between 1917 to 1926 when it went bankrupt. So, he assumes that the cup was presented in the early 1920s.

The next query was to find out more about 'Super Chief Indians.' Warren restores vintage motorbikes, including Indians, but had not come across a 'Super Chief.' It appears that it is a term likely to have been

used only in Australia and New Zealand to refer to an Indian with a sidecar. To reinforce this is an advert that Warren found from Percy Coleman's that advertised an Indian with a sidecar.

Being the good researcher that he is, Warren checked with the current President of the local motorcycle club as well as Bob Coleman, but they did not know anything about the cup.

It is likely that the hill climbs were up either Roberts Ave and/or Okoia Hill, and Warren was able to find a picture of motorcyclists on their bikes at the bottom of Roberts Ave. He explains, "The handles had been dropped for ease of riding up hill, the exhausts had been removed to increase speed and their lights had been removed in case of an accident."

Warren would love to hear from anyone who might know something about the cup and or about E Boyd. You can contact him on 027 336 0012.

He would also appreciate anyone with stories, photos, medals and other cups relating to the Whanganui Motorcycle Club up to 1964 for use in his book.

He has previously written a book on the Rangitikei Motorcycle Club, based in Marton, and has been working on the Whanganui one for the past two years. Now that he has retired, he is hoping to make quicker progress and complete the book by next year. He has about 160 pages and hopes to get up to 200.

He also hopes to present the cup back to the Whanganui Motorcycle Club.

Durie Hill Bowling Club members make representative teams



Trinnie McCarthy and Durie Hill Bowling Club President Gavin Scrivener on opening day with the donated defibrillator.

Durie Hill Bowling Club had its season opening day on 23 September, and although the weather was against us getting out onto the green, we managed to entertain ourselves indoors.

The highlight of the day was the kind donation of a defibrillator to the club by Trinnie McCarthy, daughter of life member Michael McCarthy, who sadly passed away a few years ago and who was a real character within the club.

It is intended that the defibrillator will be available for community use, and through internal fundraising we

also have funds set aside for new batteries when required.

The club welcomed four new members this season and had two more members returned to the fold.

Another highlight for the day was the news that club member Phillip Huwlyler is now the President of Bowls New Zealand. Phillip's organisational skills are well recognised within the club, and he is sure to be an asset to the national game. All in all everyone had a great afternoon and confidence is high for another successful season.

With the slightly kinder weather on Sunday, 1 October, we managed to get out onto the green and play the club Gordon pairs competition. The winning teams were Moana Mair and Mary Winterburn for the ladies and Phil Corney and Graem Tauri for the men.

Runners-up were Jax Feyen and Rosalie Broderson, Gavin Scrivener and Danny Collins. A big shout out to our green keeper, Tony McRae, for all the work he and Graeme Belk have done over the pre-season. The green has great cover and looks to be the best it's been in years.

The club is proud to congratulate Phil Huwlyler, Ken Mair, John Kane and Joe Power for making the Whanganui Academy Men's representative team. With further congratulations going to Moana Mair, Tannith Potgieter, Eleni Meimaris, Janeen Nobel, Kirsty Hill, Gavin Scrivener, Kaylin Huwlyler, Phil Corney, Tony McRae, Kelvin Francis and Bruce Winterburn for making the Senior Women and Mens representative teams.

"GO THE HILL" - supplied

Pigeon racing results

The St Johns Club Whanganui Pigeon Racing Adjunct held its fourth race of the season with a race from Riverhead, North Auckland. The race attracted 110 pigeons from seven flyers. The winning pigeon, from the loft of Shane Gudopp, covered the 374 km, airline (to Marton), in 5hr 24min 51sec for an average speed of 1151.45 meters per minute or 69.08kph. The pigeons experienced drizzly weather on their flights to Whanganui (351Km, Waverley (337km) and Marton.

Results were:

Shane Gudopp (Marton) 1151.45mpm or 69.08kph, Benedict Galanida (Whanganui1) 1135.74mpm or 68.14kph, B and A Fairweather (Whanganui) 1133.15mpm or 67.99kph, Don Lacy (Whanganui) 1116.63mpm or 66.99kph, Brent Miller (Waverley) 938.79mpm or 56.33kph.

Golf results

Castlecliff 9 Hole Club

Thursday 5 October Stableford

Ladies: Marilyn Edmonds 20, Elaine Everitt 18, Joan Coxon 14 c/b.

Men: Rodney Mence 18, Richard Smith 15, Allen Wills 15.

Raffle: Marilyn Edmonds

Archery for all ages

Looking for a fun and engaging activity for the whole family? Look no further than the local Marangai archery club!

The Marangai Archery Club are the most active Archery Club in Whanganui. It is a happy club enjoying the sport and providing coaching. The club is a welcoming and inclusive community that offers beginner courses for those who are new to the sport of archery with experienced instructors who can guide you through the basics, teaching you proper form, safety techniques, and the fundamentals of target shooting.

Marangai Archery specializes in all groups, including schools, special needs, family groups, work or Christmas functions. When you head along to the Marangai



Robbie, Ezra, Nathan and Ryan are enjoying our coaching and doing very well.

Archery club you will be coached by NZ registered Coaches on a NZ registered ground. If you have a group of friends or colleagues that would like to give archery a go please contact secretary@marangaiarcheryclub.co.nz to discuss options.

The Marangai club has a beginner's course starting on Sunday, 15 Octo-

ber, at 10.30am. The cost is \$30.00 for five lessons and is available to all age groups. If you decide to join the club the \$30.00 gets taken off the yearly subs so it makes it cheaper for you to join. If you have a student who wants to try archery, or you would like to give archery a try yourself, flick Maureen a text on 0272163741.



DAVID JONES MOTORS

www.davidjones.co.nz

DAVID JONES
MOTORS **38**
YEARS
Proudly Supporting The Community For

Spring **SALE** Spring **SALE**

2017 SUZUKI IGNIS

1.2L, HYBRID, auto, only 57,000kms, alloys, tints, weather shields, 60/40 split rear seats with isofix, great economy!



Was \$17,995 **NOW \$16,750**

2018 SUZUKI X BEE

1.0L, HYBRID auto, only 68,000kms, fog lights, alloys, Isofix, 360 degree camera, reverse sensors, push button start, 5.4L/100kms.



Was \$21,995 **NOW \$19,995**

2019 SUZUKI SWIFT RS

1.0L, turbo, petrol, auto, only 26,000kms, alloys, reverse camera, SatNav, Android Auto/Apple CarPlay, only 5.7L/100kms, turbo, 1 owner.



ON SALE **NOW \$21,995**

2018 TOYOTA YARIS GX

1.3L, petrol auto, only 92,000kms, body kit, full service history, immobiliser, auto lights, NZ new, CD player, 5 star safety rating, high seating.



ON SALE **NOW \$12,995**

2021 HYUNDAI IONIQ 5

58kwh, fully EV, auto, only 45,000kms, 380km range, reverse camera, alloys, Apple CarPlay / Android Auto, wireless charging.



Was \$56,995 **NOW \$55,995**

2021 NISSAN NOTE X

1.2L, HYBRID, auto, only 900kms, climate control, body kit, LED headlights, blind spot detectors, parking sensors, E-Power.



Was \$36,995 **NOW \$34,995**

2018 HYUNDAI KONA ELITE

2.0L, petrol, auto, only 48,000kms, keyless start/entry, alloys, wireless charging, reverse camera, bluetooth, heated leather seats, great colour.



Was \$27,995 **NOW \$26,995**

2019 SUZUKI VITARA TURBO

1.4L, turbo petrol, auto, only 52,000kms, two tone, Safari Edition, black alloys, body kit, parking sensors, Isofix, reverse camera, SatNav.



Was \$26,995 **NOW \$25,750**

2016 FORD MUSTANG GT

5.0L, V8, 6 speed manual, only 66,000kms, alloys, full body kit, leather, SatNav, manual, GT Fastback tuned & ready for a new home!



ON SALE **NOW \$59,995**

2018 JEEP COMPASS

2.4L, petrol, auto, only 34,000kms, alloys, tiptronic, tinted windows, fog lights, keyless entry, 5 star safety, stunning, luxurious & loaded SUV.



Was \$29,995 **NOW \$27,995**

2014 HYUNDAI IX35 GDI

2.0L, petrol, auto, only 141,000kms, reverse camera, alloys, high seating, cruise control, fog lights, roof rails, leather.



ON SALE **NOW \$16,995**

2014 NISSAN X-TRAIL ST

2.5L petrol, CVT auto, only 195,000kms, alloys, only 8.8L per 100km, 7 seater, large boot, reverse camera, towbar.



ON SALE **NOW \$15,995**

2022 NISSAN X-TRAIL TI-L

2.5L, petrol, CVT auto, only 3,200kms, 360 deg. camera, safety package, adaptive cruise control, top spec, demonstrator.



Was \$59,995 **NOW \$54,995**

2016 MITSUBISHI ASX VRX

2.0L, petrol, auto, only 119,000kms, keyless entry/start, towbar, reverse camera, bonnet protector, alloys, parking sensors, VRX, leather, sunroof.



ON SALE **NOW \$19,995**

2019 FORD RANGER XLT

3.2L, turbo diesel, auto, only 51,000kms, 4x4, bullbar, side steps, towbar, snorkel, seat covers, reverse camera, parking sensors, A/T tyres.



ON SALE **NOW \$45,995**

2023 FORD RANGER XLT

2.0L, Bi turbo diesel, 10 speed auto, 2WD, only 3,600kms, hardlid, towbar, alloys, 10.1" touch screen, reverse camera, keyless entry/start.



ON SALE **NOW \$56,995**

2016 NISSAN NAVARA ST

2.3L, twin turbo diesel, 6 speed manual, roof rack, only 127,000kms, roof rack, sportsbar, tonneau cover, towbar, black out grill & alloys.



ON SALE **NOW \$28,995**

2008 FORD RANGER XL

3.0L, turbo diesel, manual, only 289,000kms, king cab, 2WD, canopy, roof rails, towbar, a great workhorse for any tradie. Priced to sell.



Was \$16,995 **NOW \$13,995**

2020 MITSUBISHI TRITON GLX-R

2.4L, turbo diesel, 6 speed manual, 20" wheels only 10,000kms, black out package, towbar, tonneau cover, sportsbar, reverse camera.



Was \$41,995 **NOW \$39,995**

2018 TOYOTA HIACE REGIUS

2.8L, turbo diesel, auto, only 118,000kms, roof rack, removable rear bench seat, dual sliding doors, 2 keys, looks great in black!



ON SALE **NOW \$38,995**

You buy. We pay!



SAVE UP TO \$1,207

For a limited time, when you buy a new Suzuki Swift Sport, Vitara Turbo or S-Cross, we'll pay the Clean Car fee! Plus, with No Deposit 6.9% p.a. Finance it's even easier to drive away today in a new Suzuki. So, what are you waiting for? It's time to clean up with this special deal, available now.

*Clean Car Fee offer applies to all new Suzuki Swift Sport, Vitara Turbo and S-Cross vehicles registered between 1-31 July 2023. The Clean Car Fee that applies to the vehicle will be paid for by Suzuki New Zealand at the time of registration. Finance payments are based on nil deposit, 6.9% p.a. fixed interest rate, 5 year term, \$10.25 PPSR fee, \$100 UOC loan fee and \$200 dealer origination fee. On-road costs are payable to the Dealer. Suzuki Finance is provided by UOC Finance Limited. Lending criteria, fees and standard terms and conditions apply. These offers are available 1-31 July 2023 and exclude Jimmy, fleet purchases, demo vehicles and all other promotions. www.suzuki.co.nz



NISSAN

CLEAN CAR TAX
WE PAY, YOU DON'T

Nissan will pay the clean car fee applicable to any new ST, ST-X or PRO-4X models. Valid until the 31st October 2023.

THE BEAST RUNOUT

TRITON
2WD GLX-R AUTO
NOW JUST **\$40,990** ^{+ORR*} ^{+ORF*}

MITSUBISHI MOTORS
Drive your Ambition

105
DIAMOND ADVANTAGE

*Price listed is for Triton 2WD GLX-R and excludes on road costs of \$950 which includes registration, WOF, 1000km road user charges and a full tank of fuel and excludes the Clean Car Fee of \$6,440. Optional accessories shown, available at additional cost. Visit www.mnz.co.nz for full Diamond Advantage Warranty conditions.

276 & 330 Victoria Avenue, Wanganui. Phone 06 345 5115



David Jones Motors



"Everything Is Going To Be Alright" concert by Princess Chelsea this Friday

Princess Chelsea will perform her 2023 Taite Prize winning album *Everything Is Going To Be Alright* in its entirety (from start to finish) on a special New Zealand tour this October.

She will be supported on tour by an all-star band featuring some of New Zealand's best musicians; David Harris (Drums), Joshua

Worthington-Church (Guitar), Simeon Kavanagh-Vincent (Guitar), Joe Kaptein (Keys) and Jasmine Balmer

(Guitar). *Everything Is Going To Be Alright* released to critical acclaim in September 2022, via Lil'

Chief Records and was further celebrated upon taking out the coveted 2023 Taite Music Prize.

Princess Chelsea has also been nominated for 2023 Panhead Rolling Stone Aotearoa Awards for 'BEST RECORD' and also BEST SINGLE for 'Forever Is a Charm'.

Crafted by Cult producer Chelsea Nikkel, known as Princess Chelsea, *Everything Is Going To Be Alright* was born from a deeply personal

journey of recovery and healing. Although emerging from a "nervous breakdown" phase, the songs are far from wallowing in sadness. Instead, the album offers a cathartic experience, serving as a source of solace for those who resonate. "I love the album" shares Chelsea "and I think it's probably my best one, and I'm just happy that other people like it."

A classically trained pianist Chelsea's cinematic, dreamy pop has been expertly refined over 11 years, five albums, one EP and 11 singles. Her musical style can be described as ethereal and evocative, seamlessly blending elements of pop with cinematic influences.

On this tour, New Zealand audiences will experience the album in its entirety, with highlight tracks like the minimal groove-based guitar arrangement of 'Forever is a Charm', the jangly

guitar pop gem 'Love is More', dreamy tune 'Dream Warrior', and the epic 6-minute ode to personal recovery, the closing title track 'Everything Is Going To Be Alright Pt.2'.

It will be a great send-off before Chelsea and her band embark on their upcoming tour of the United States.

Princess Chelsea will be performing at Porridge Watson on Friday, 13 October. Tickets from Banished Music.



Princess Chelsea performing tomorrow (Friday) at Porridge Watson

Recent RCP winner

Congratulations to John, winner of the double pass for the 'Reign of the Beast' gig on Friday, 13 October. The gig features a range of top bands from Whanganui, Palmerston North and Wellington and kicks off at 6pm at the Musicians Club.

Dr Libby Sampey joins Whanganui Hospice

Dr Libby Sampey joined Whanganui Hospice at the end of July from Scotland. She

trained as a doctor in Edinburgh specialising in palliative care.

She explains that in the

Scottish medical training system you spend two years on rotation doing four months blocks working in different areas of medicine before graduating, and one of these rotations was working at a hospice.

When she graduated, she decided "I wanted a change, a bit of adventure, the opportunity to live abroad and experience a different health care system. New Zealand appealed as it is an English-speaking country but also has a number of different cultures.

She saw the opportunity to come to New Zealand and understandably googled it to find out something about the place. However, she says, "Whanganui and the job are way above my expectations," and "I appreciate how friendly everyone is."

She sees the Whanganui experience as lasting a long time. She will also use the opportunity to continue training with Whanganui Hospital and gain more experience.

Davene Vroom, Chief Executive Officer of Hospice Whanganui says, "We are absolutely delighted to welcome Libby to our team here at Hospice Whanganui. She not only brings an absolutely passion for palliative care, but also a dedication to ongoing research, education and innovation in end-of-life care. Libby has hit the ground running and is already bringing her knowledge, expert care and vibrant personality to her mahi with our patients and their whānau. We are so fortunate to have her join our amazing team and wider community here in Whanganui."



Dr Libby Sampey



WHANGANUI SECONDARY SCHOOL NEWS

Whanganui Girls' College: Striving for excellence



Whanganui Girls College principal, Nita Pond, with 2023 Head Girls

Imagine a school where every student gets the chance to shine. Whanganui Girls' College offers an amazing opportunity for girls to participate in sports tournaments, cultural and creative arts activities, interschool competitions, and community events.

What makes us unique is our small school size, which means more chances for younger and older students to get involved, explore their passions, and make a lasting impact.

At Whanganui Girls' College, we prioritize creating a safe and caring environment. We want every student to feel supported and valued. With smaller class sizes, our teachers can give individual attention and care to each student. Our mentoring programs en-

sure that everyone receives guidance tailored to their needs, fostering a sense of belonging and personal growth. Our House system allows for fun competition and life long friendships to develop.

Core Values: Achieve, Safe, Tipuranga, Respect, and Awhi

At Whanganui Girls' College, these values are not mere words; they are guiding principles shaping the educational journey of every student. 'Achieve' signifies the pursuit of high standards and excellence.

'Safe' reflects the college's commitment to providing a secure and nurturing environment. 'Tipuranga' focuses on continuous growth and learning, while 'Respect' emphasizes kindness and consideration.

Finally, 'Awhi' embodies mutual support and cooperation on the path to success.

Facility Upgrades: A Modern Learning Environment

In 2023, Whanganui Girls' College underwent significant facility upgrades, providing students with modern and welcoming learning environments. The completion of the whareniui building project was a pivotal moment, playing a vital role in welcoming new students and staff. The whareniui is set to become a cornerstone of Māori cultural values within the college.

Additionally, seven fully refurbished classrooms were added, enhancing the teaching and learning experience. This reflects the

college's commitment to providing top-tier resources and facilities.

Student Involvement: Beyond the Classroom

In summary, Whanganui Girls' College remains dedicated to excellence, and guided by its core values. Prospective students and parents should note that enrolments for the academic year are still open. We offer a range of scholarships for new students. Join Whanganui Girls' College on its journey towards excellence, where values, small class sizes, a safe and caring environment, and a modern environment converge to shape the leaders of tomorrow.

- Craig Ritani
Deputy Principal, Whanganui Girls' College

Now offering
BOTOX

VICTORIA DENTAL

Make an appointment today

06 345 3222

Victoria House

1a Rutland Street, Wanganui



Whanganui Girls' College

Where Girls Shine

Specialists in Girls' Education

www.whanganui-girls.school.nz
06 349 0944



WHANGANUI
HIGH SCHOOL

www.whanganuihigh.school.nz

That we might have

LEARNING INTEGRITY
FELLOWSHIP EXCELLENCE

Pumell St, Wanganui • Phone 06 349 0178



Whanganui City
College

The Heart of the City
Challenging Ourselves for a Better Future

84 Ingestre Street, PO Box 4010, WHANGANUI
Phone 06 349 0180
www.wcc.school.nz



Cullinane College

"For love of God,
life and learning"

15 Peat Street, PO Box 5017
Wanganui 4500
Ph: 349 0105
Email: office@cullinane.school.nz

Two locals setting up a travelling market - more stallholders welcome

Whanganui locals, Sue Thorby and Charlotte Keenan, are rolling again with a new venture, The Unlost Village Travelling Marketeers, a monthly travelling market throughout the North Island. Fresh off the Gypsy Fair circuit after a successful four years, Sue and Charlie have created this unique weekend market for themselves and fellow travellers keen to be able to keep on the road without the rigour of a full-time, seven-month circuit. Unlike other travelling fairs, marketeers can join for one or all of the markets, plus it's open to local marketeers who can add something unique to the market and want a taste of the travelling village market lifestyle. The Unlost Village Travelling Market will be at Kowhai Park, on Saturday and Sunday, 11-12 November, 9am- 5pm.

A vibrant, eclectic troupe of experienced marketeers, The Unlost Village Travelling Market is bringing herbs and healing, hats, bags, jewellery, accessories, ceramics, clothes, wood, stained glass, leather, art, coffee and real fruit ice cream, upcycled

silver cutlery, pallet wood art, crystals, crafts, hair braiding, gourmet burgers and more. Acclaimed local artists Lizette Lucky Britton (Gluepots and Lemon-drops) and Jolene Conroy (Redlow Gypsy) are two of the regular marketeers bringing their amazing wares.

In the spirit of the village market, a buskers stage is available for musicians, dancers, performers and artists, plus lots of free fun 'ye olde Playstation style' for the kids (big and little).

There is still more room for people to join this jolly group of marketeers, either for the full or part season. Contact them for more info by email: unlostvillage@gmail.com or via Facebook, <https://www.facebook.com/UnlostVillage>. Expressions of interest for Whanganui need to be made pronto as per Council requirements for confirmation is Friday, 13 October.

Sue and Charlotte believe that in amongst its challenges, life is for creating and living our joy, passions and dreams and helping our fellow people to do the same. "Come and enjoy some time with us, our amazing village and stalls, great music and good vibes!"



Sue and Charlotte



**ARTHRITIS
NEW ZEALAND**

KAIPONAPONA AOTEAROA

WORLD ARTHRITIS DAY

12 OCTOBER



Raising global awareness about the different forms of arthritis

World Arthritis Day is celebrated on October 12 every year. The day is designed to raise global awareness about

the different forms of Arthritis, the importance of early diagnosis and the best forms of treatment. Amongst the different

types of arthritis are ankylosing spondylitis, gout, lupus, osteoarthritis, and rheumatoid arthritis. With timely medical intervention, patients can lead a comfortable life.

The word arthritis is derived from the Greek words 'arthro,' meaning 'joint,' and 'itis,' meaning 'inflammation.' Arthritis is a condition involving inflammation of the joints. It can affect any living thing that has bones and evidence shows that it has been present in humans for at least as far back as 4500 B.C.

For conditions such as rheumatoid arthritis and osteoarthritis, there is no cure, although regular exercise and weight reduction can suppress the effects. There is, of

course, medications that focus on reducing the pain of the condition rather than seeking to remove it; physical therapy also helps.

For a person suffering from arthritis, movement becomes difficult. Yet they must exercise and keep their joints mobile, to reduce inflammation, which has shown marked improvements in the long-term relief of the pain associated with it.

Many associate arthritis with the elderly and the health concerns that affect them. This is mostly correct, as statistical evidence shows that those over 65 are in fact the primary sufferers. But 30% of all sufferers are under the age of 65, with some of them being teenagers and, though rarely, infants.



Arthritis NZ
Mateponapona
Aotearoa

WORLD ARTHRITIS DAY - 12 October

As there is no street appeal this year, come celebrate with Arthritis Whanganui at the Rivercity Markets this Saturday 14 October



Joint pain? Early diagnosis is the key for the treatment of arthritis



OKERE HOUSE
Dementia Care

Okere House welcomes your enquiries ...



As a Specialised Dementia Care Facility we offer Day Care, Respite and Residential Care for your loved ones in a warm and friendly environment

Please phone 06 348 4857 for more information
35 Treadwell St, Wanganui



Complete Rehab

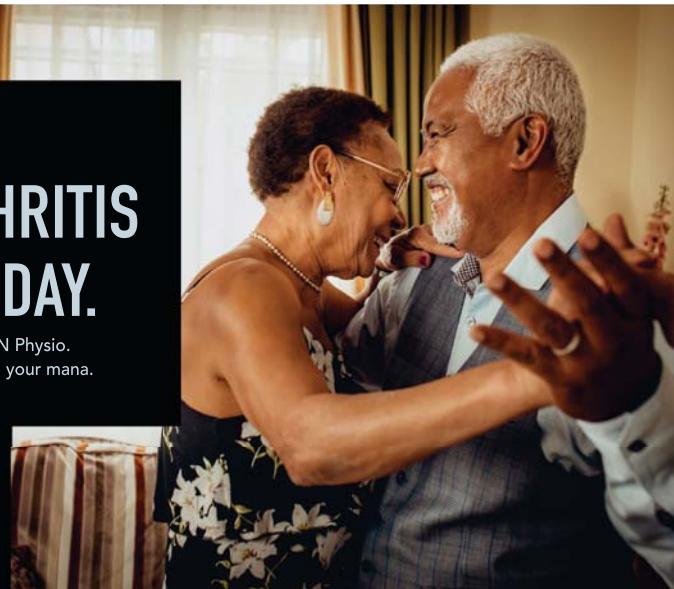
KIA KAHA!

BEAT OSTEOARTHRITIS THIS WORLD OA DAY.

Join our specialised OA exercise classes at M & N Physio. Expertly trained physios. Latest research. Regain your mana.

**WHAKAPĀ MA!
BOOK TODAY FOR A
STRONGER TOMORROW.**

Contact Us:
06 888 6083
mandnphysio.com





Jumbo crossword

ACROSS

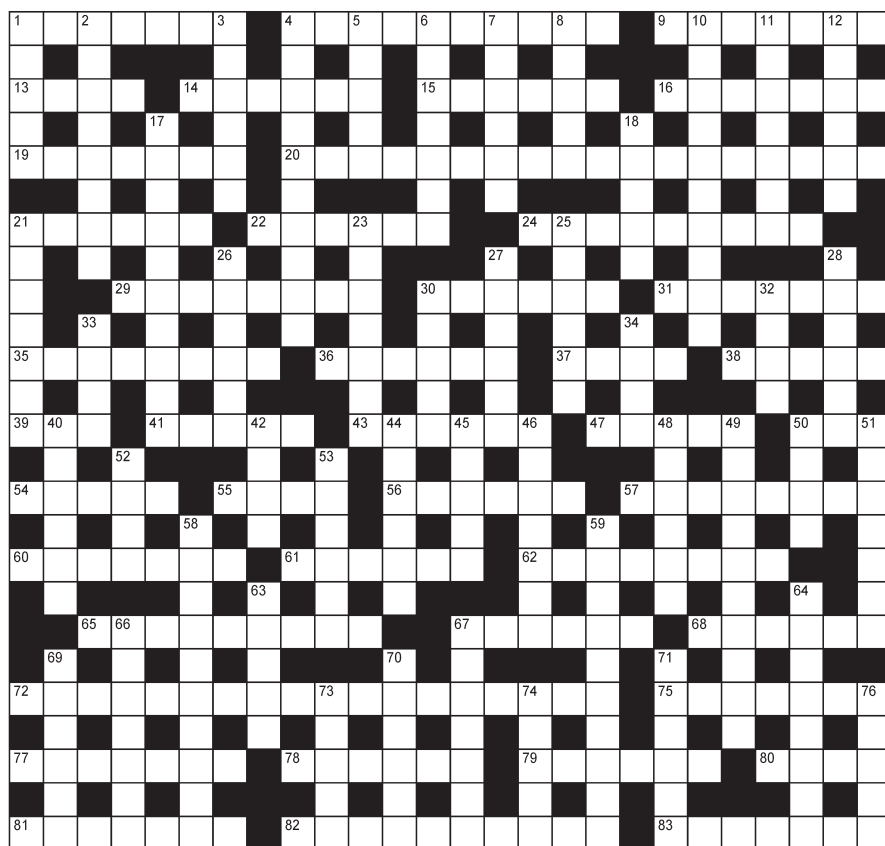
- 1 Odds (7)
- 4 Provide guidance (4,6)
- 9 Sloping letters (7)
- 13 Yours and mine (4)
- 14 Tar (6)
- 15 Uncommon thing (6)
- 16 Mosque tower (7)
- 19 Edgy (7)
- 20 Someone who resembles their parent in character (4,3,3,3,5)
- 21 Previously (6)
- 22 Marionette (6)
- 24 Invest at a risk (9)
- 29 Glacier fissure (8)
- 30 Paucity (6)
- 31 Frozen drips (7)
- 35 Lacking proper respect or seriousness (8)
- 36 Beam (6)
- 37 Pitcher (4)
- 38 Insure (5)
- 39 Label (3)
- 41 Soft leather (5)
- 43 Moral philosophy (6)
- 47 Old French money unit (5)
- 50 Long fish (3)
- 54 Lampoon (5)
- 55 Equal (4)
- 56 Shellfish (6)
- 57 Adversary (8)
- 60 Factory restaurant (7)

DOWN

- 1 Circus comic (5)
- 2 Flying machines (8)
- 3 Thinly dispersed (6)
- 4 Links (4,6)
- 5 Italian composer (5)
- 6 Aerodrome (7)
- 7 Establish the truth of (6)
- 8 Come down with (5)
- 10 Bronze-winning position (5,5)
- 11 Circular (7)
- 12 Grip firmly (6)
- 17 Jealous dismissal of something really desired (4,6)
- 18 Train (5)
- 21 Advantage (7)
- 23 Ready (7)
- 25 Clay user (6)

ACROSS

- 26 Tree-lined street (6)
- 27 Material (6)
- 28 Strike out (6)
- 30 Discard (5)
- 32 Cut short (4)
- 33 Sovereign (4)
- 34 Rip (4)
- 40 Come into view (6)
- 42 Affair of honour (4)
- 44 Red fruit (6)
- 45 Offspring (5)
- 46 Varnish (7)
- 48 Attraction (6)
- 49 Downpour (10)
- 50 Sword (4)
- 51 Salad vegetable (7)
- 52 Debatable (4)
- 53 Decorative wall band (6)
- 58 Slow (10)
- 59 Basic precept (6,4)
- 63 Porcelain (5)
- 64 Ship's compass housing (8)
- 66 Fetid (7)
- 67 Puts up with (7)
- 69 Steer (6)
- 70 Clippers (6)
- 71 Against (6)
- 73 Edible internal animal parts (5)
- 74 Striped animal (5)
- 76 Vote in (5)



Sell your Residential or Lifestyle property for a fairer fee!

2% + gst*

(*minimum fee of \$10,000 + gst applies)

- Receive complimentary professional property photos, drone, video & floor plan
- Trust is earned. Recognised for being in the Top 20% for customer satisfaction nationwide.
- Go to www.ratemyagent.co.nz and search Rochelle Burton
- Make your selling experience an easy one and receive the service and results you expect and deserve!



Rochelle Burton
Licensed REAA 2008

Call Rochelle Burton now to find out more
0800 649 733 or 027 295 8407
rochelleb@arizto.co.nz

Whanganui



Smarter Real Estate arizto.co.nz

SIMON SHUKER'S CODE-CRACKER Extra 781

EACH number in our Code-Cracker grid represents a different letter of the alphabet. For example, today 17 represents H, so fill in H every time the figure 17 appears. You have one letter in the control grid to start you off. Enter it in the appropriate squares in the main grid and solve the starter word. Fill in other squares in the main and control grids with the found letters and look for the next word. Follow the word trail through the puzzle to its completion. Visit www.codecracker.co.nz

1	2	3	2	4	4	5	1	6	7	14	
8	9	10	11	8	12	13	10	13	15	16	
2	9	14	2	5	1	8	15	2	7	16	
1	6	7	6	2	1	1	3	17	H	17	
17	16	9	1	9	4	8	1	17	6	9	
9	6	18	19	9	20	6	13	1	8	1	
1	9	1	2	10	9	20	6	13	1	8	1
3	6	2	16	22	13	2	23	23	1	6	6
21	1	2	5	6	11	13	1	12	25	9	
9	24	17	5	15	5	8	6	4	6	17	
2	9	21	2	10	2	5	25	9	13	26	
10	13	1	26	9	8	4	18	21	1	13	26

A B C D E F G H I J K L M N O P Q R S T U V W X Y Z

Sudoku

6	7	9			2			
8			7		4			
4	9		2		5	1	7	6
			9		3	1		
	6				8			
	4	2		1				
7	5	1	8		2		4	3
		4		5				1
	8				1	7		5

Easy

Fill the grid so that every column, every row and every 3x3 box contains the digits 1 to 9.

Previous solution

1	P	A	R	S	W	O	N	U	H	Z	E	I	T
14	C	D	V	L	K	Q	J	G	F	B	M	X	Y

Previous solution

5	7	1	4	8	6	3	2	9
3	2	4	1	9	7	8	5	6
8	9	6	3	5	2	7	4	1
4	5	7	6	3	1	2	9	8
1	8	3	9	2	4	6	7	5
2	6	9	8	7	5	4	1	3
6	1	5	7	4	8	9	3	2
9	4	2	5	6	3	1	8	7
7	3	8	2	1	9	5	6	4

Previous crossword solution

ACROSS: 1 Loose, 4 Slippery, 9 Choose, 14 Chief, 15 Call a spade a spade, 17 Eider, 18 Ace, 19 Ignored, 20 Dictating, 21 Pencil, 24 Goosestep, 25 Cudgel, 26 Settee, 29 Inhalation, 31 Ebb, 32 Swivel, 33 Digs, 35 Wan, 37 Also, 39 Reminisce, 40 Caesarean, 41 Birch, 42 Reprisal, 47 Repeated, 51 Angst, 55 Boycotted, 56 In a bad way, 58 Deed, 59 Lap, 60 Tree, 61 Remote, 62 Tie, 63 Stagnation, 66 Mutual, 67 Bridge, 69 Sightseer, 72 Guitar, 73 Sceptical, 75 Holster, 77 Awl, 80 Ebony, 81 Brave the elements, 82 Erode, 83 Reveal, 84 Exorcist, 85 Regal.
DOWN: 2 Orangutan, 3 Salvo, 5 Leap, 6 Predict, 7 Easy to please, 8 Yeast, 9 Cleaned, 10 Omen, 11 Sodden, 12 Final, 13 Offence, 14 Cracker, 16 Stegosaurus, 22 Helium, 23 Bewitch, 24 Glamour, 25 Cobweb, 27 Trisect, 28 Renegé, 30 Nine, 32 Snare, 34 Synod, 36 Race, 38 Lie, 42 Robot, 43 Payment, 44 Iron, 45 Anthem, 46 Agile, 48 Pay envelope, 49 Auditor, 50 Eve, 51 Adjourn, 52 Tiptoe, 53 Take a shine to, 54 Bass, 57 Wealth, 61 Orchestra, 65 Matinee, 66 Minaret, 68 Decibel, 70 Graphic, 71 Cajole, 72 Gloom, 74 Peace, 76 Sieve, 78 Pyre, 79 Mess.

5x5

S	L		D	
P		R		
R	V		D	
	R	N		
S	R		Y	

Insert the missing letters to complete ten words — five across the grid and five down. More than one solution may be possible.

C	H	I	V	E
L	I	V	E	N
A	T	O	N	E
S	C	R	A	M
S	H	Y	L	Y

Previous solution

All puzzles © The Puzzle Company
www.thepuzzlecompany.co.nz



WHAT'S ON

IN THE COMMUNITY

Alcoholics Anonymous

Phone 0800 229 6757. If you have a drinking problem maybe we can help. AA Wanganui area meeting list: Sunday, St Johns Lutheran Church Hall, 51 Liverpool Street, Wanganui, 9am; Monday, Friendship Hall, Morris Street, Marton, 7.30pm; Tuesday, St Johns Lutheran Church Hall, 51 Liverpool Street, Wanganui, 12.30pm; Wednesday, St Luke's Church Hall, 34 Manuka Street, Castlecliff, 7.30pm; Thursday, St Johns Lutheran Church Hall, 51 Liverpool Street, Wanganui, 7.30pm; Al-Anon (family support) Friday, Gonville Library meeting room, 12.30pm. Ph 0508 425 266.

An Amazing Opportunity

if you are interested in Parapsychology. There will be a weekend Workshop in November ... I have been there for clients "to see more clearly" for many, many years now. I am available 6 days a week. Ring for more information: Sandra Singleton. Psychic Numerologist. 06-345-3803.

Birthright Wanganui AGM

To be held on Tuesday, 17 October 2023, 6.15pm at the Trinity Methodist Church, 183 Wicksteed Street.

Deep Fried - Upcoming Gigs

Saturday, 14 October, Lads on Taylor Street 4-8pm. Free entry. STELLAR, 10pm to 2am. Hip Hop DJ, Nat Lover. Free entry.

Do You Have Questions About the Bible?

Come and join us at the Christadelphian Hall on Tuesday night at 7:30pm for Bible-based discussion and a cup of tea. All are most welcome. 138 Great North Road. Email: wanganui.ecclesia@outlook.co.nz / www.thisisyourbible.com

MIST Mental Health

Survivors Team

203 Victoria Ave, open 9.30am to 3.30pm Monday to Friday. Closed statutory holidays. A place to share activities and socialise. We offer activities, acceptance and support.

Porridge Watson - What's On

Thursday, 12 Oct., DIY Comedy, 7pm. Free entry. Sunday, 15 Oct., IJD Jazz sessions from 6.30pm. No cover charge. Monday, 16 Oct., Taco Monday from 3pm. Thursday, 19 Oct., The Quiz from 7pm. Free entry. Friday, 20 Oct., Heti and Hope, from 8pm. No cover charge. Saturday, 21 Oct., Damn Raucous Brass, from 8pm. \$10.00 entry.

Poultry Club

meets Saturday 14th October, Mathieson Street Hall. Outside if fine, otherwise inside. 12pm start. Poultry for sale: Hens, Roosters, Bantams, Chicks. Also feed and equipment available. Eggs to hatch or eat. Plants and produce table. Cuppa in hall. All Welcome, including beginners. Entry fee \$2-. Enquiries ph. 345 8718.

Theosophy Wanganui Public Meeting

Usually held 2nd Sunday Monthly. Where: Community Arts Centre, back river entrance in the Awa Room. When: 2pm What: Presentation with respectful discussion and communication. Purpose: No dogma, 'Do no harm', explore ancient wisdom to develop self with the universe. Email: theosophywhanganui@gmail.com
Wanganui Spiritual & Awareness Centre
Meetings 7pm Sundays, Quaker Meeting Rooms, 256 Wicksteed St. Local or visiting speakers or mediums sharing their spiritual gifts. Join our healing circle, take a raffle, stay for supper and chat. Everyone is welcome. Koha appreciated. See our Facebook page for details. Ph: 027-697-6308.

Wanganui Heritage Collectors Fair

Jubilee Stadium, October 22, 9.30am-3.30pm. \$2 entry. Huge range of antiques, collectables, vintage, including art, glass, clothing, books, stamps, coins, pottery, jewellery, basketry, woodware, carpets, Crown Lynn, ornaments, art deco, furniture and more. Follow on Facebook Wanganui Heritage Collectors Fair.

A Very Brass Band Concert this Sunday

Brass Whanganui's final concert of 2023 is this Sunday, 15 October, at the Jane Winstone Chapel at 3pm. The concert comes on top of a year of excellence and reward for the band.

In September, the band performed at the Central Districts Brass Band Contest in Palmerston North, winning hand-somely against six bands. It was exciting to be playing the piece 'Bipolarity' to such a high standard, similar to that which we achieved at the National Brass Band Contest, with the judge claiming it a powerful performance, along with the version of 'From Dusk till Dawn' by Hamish Jellyman which earned a huge appreciation from the audience and judges alike.

You can hear this performance by going to the BRASS WHANGANUI Facebook or look it up on Youtube.

Since then, we have had four of our young players be selected and attend the National Secondary Schools Band in Cambridge last weekend. Bryn Morgan, Toby Clark, Connor Rooke and Mitchell Cosford, all from Whanganui High School, attended the 5-day camp receiving tutelage from the best brass teachers in the country,



Brass Whanganui

The Brass Whanganui Band

concluding with an amazing concert performance to a very large and appreciative audience.

A Very Brass Band Concert aims to bring to our audience some of the traditional brass band pieces along with some favourites for the brass band enthusiast.

Pieces from the band's history, Edward Gregson's 'March Prelude' and Dean Goffin's very famous 'Rhapsody in Brass' will sound fantastic in the Chapel, alongside solos from our principal cornet Tahu Pikimau, performing 'Song of Hope', written by Peter Meechan, and our Principal trombone Chris Scudder perform-

ing 'Atlantic Zepher's', which was originally written for the principal trombone of the Black Dyke Band, Brett Baker. With even more solos, hymns and marches make for a very brass band concert.

This concert is on this Sunday, October 15, at the Jane Winstone Chapel at 3pm. Just \$20 gets you in.

For more information about BRASS WHANGANUI look at our facebook page.

DEMPSEY & FORREST

FUNERAL DIRECTORS

Arrange a visit today and meet our friendly team.

We are here to help you in your time of need.

208 Guyton St Phone 06 349 0202 any time

www.dempseyandforrest.co.nz

Your loving memories set in stone +100 YEARS 1914-2014

HEADSTONES

Family owned for since 1914

For all monumental work in all cemeteries

Check out our website below

462 Somme Parade, Whanganui - opposite the cemetery
Tel (06) 343 8708, Email: info@anderson-memorials.co.nz
Showrooms in Feilding & Palmerston North
www.anderson-memorials.co.nz

Regular jazz jam sessions

The opening festivities for Whanganui's International Jazz Day celebrations have featured jam sessions @ Porridge Watson for the past two years. These proved so entertaining that owner Tony Sundeman decided to feature them regularly on the third Sunday of the month.

Piano wizard Chris Dann (Palmerston North) leads the house band with Berndt Reiss on bass and Michael Franklin-Browne on drums. Local musicians, you are invited to come down to the club and 'jam with the band'. Trumpeter Richard Singleton and saxophonist Hadleigh Shaw, both members of the Whanganui Jazz Orchestra, are two of the performers who have featured in recent sessions. Twenty-year-old tenor sax student Joe Kennedy drove down from Taihape to play last month. Vocalists Dan Fearn and Annie Keating have participated, as well as guitarist Chris Salmon.

Jam sessions became 'a thing' in urban centres in America in the early/



Pianist Chris Dann

mid-twentieth century where there were many clubs featuring live music every night. Musicians would meet up after their performances to keep the music flowing all night long. The sessions came to prominence when jazz musicians playing in dance bands took the opportunity to get together and concentrate on improvised music. Here in Whanganui, 100 years later and 10,000 miles away, we take inspiration from these pioneers and do it our way!

The next session will be

this Sunday, 15 October. The band kicks off at 6:30. There is no cover charge. Porridge Watson has a great menu and an excellent bar. The atmosphere is relaxed and friendly, and the music adventurous. Come on down and check it out. You never know who will appear on the stage to contribute to what is always an exciting performance by the Chris Dann Trio.

IJD Jam Session @ Porridge Watson, 30 Drews Ave, Sunday 15 October, 6:30pm, No Cover Charge.

Recent Bereavements

Sadly passed away recently...

Teresa Teata ALLEN,
on 6 October 2023, aged 77 years.

Chaika BARNES,
on 4 October 2023, aged 69 years.

Margaret Mary (nee Sullivan) CONNORS,

on 8 October 2023, aged 90 years.

Derryn Ann (nee Trainor) FLETCHER,
on 28 September 2023.

Bruce GICHARD,
on 10 October 2023, aged 76 years.

Leslie David GOULD,
on 6 October 2023, aged 77 years.

Kelvin Johan HERION,
on 9 October 2023, aged 55 years.

Judy Anne MILNE,
on 3 October 2023, aged 84 years.

Richard Reginald PALETHORPE,
on 4 October 2023, aged 93 years.

Peter Allan (Blackie) RAYMOND,
on 30 September 2023, aged 82 years.

Waru O'Noema WHENUAROA,
on 10 October 2023, aged 58 years.

John Arthur Bracken WILSON,
on 6 October 2023, aged 90 years.

Jill WINSOR,
on 7 October 2023, aged 87 years.

River City Press

Phone 345 3666. Email: rivercitypress@xtra.co.nz

Pre-Planning
Call or Visit For Your Free Pre-Planning Pack.

179 Ingestre Street | clevelandfunerals.co.nz

RIVER CITY PRESS, THURSDAY, OCTOBER 12, 2023 - 27

SITUATIONS VACANT

ARAMOHO PHARMACY

Pharmacist or PACT Technician Required

Ready for a change?
We are seeking either a registered pharmacist or a qualified PACT technician to join our close-knit team.
Ideally, this is a full-time position, Monday to Friday, 8.30am to 5.30pm.
Duties include dispensing, OTC counselling, OST services and compliance packaging, where we work with the newest robotic technology to make our lives easier.
This job would suit someone who has, or who wishes to gain managerial experience. There may also be an opportunity to invest in the pharmacy for the right candidate.
If this sounds like you, then please email Diane in confidence on diane@aramohopharmacy.co.nz with your CV and a covering letter.
Applications close on Tuesday, 24th October.

HAND-KNITTERS REQUIRED

HAND-KNITTERS make some money at home while you do something you enjoy.
Earn \$60-\$170 per garment.
We pay postage each way.
Must be very experienced.
Please send us a sample with 30 sts x 20 rows with a colour change patch in the middle &/or photos of garments you have knitted.
Please post to:
BONZ Group Ltd, PO Box 955, Queenstown 9300



Cullinane College

Inclusive Learning Assistant/Teacher Aide

Cullinane College is seeking an experienced Inclusive Learning Assistant/Teacher Aide to work with a student with very high complex needs, as well as other students that have a variety of physical, cognitive and emotional needs.
Applicants must have excellent communication skills, be physically fit and able to work within a team environment. Experience in working with young people with very high physical care needs is essential.
This is a rewarding and challenging position. If successful, you will be joining a dedicated and experienced team.

- The position is Monday to Friday with the hours of work still to be confirmed.
- This position will begin in Term One 2024.

Please address all enquiries regarding this position to aquirk@cullinane.school.nz

River City Press
Proud to be locally owned and operated
Phone 345 3666. Email: rivercitypress@xtra.co.nz

Hello Comedy showcase show with Tom Sainsbury

Local company Hello Comedy returns with their latest show featuring headliner, well-known comedian Tom Sainsbury. Hosted by two-time Billy T nominee and popular podcaster Tim Batt, the show is on Saturday, October 28, 8pm, at the Whanganui Musicians Club in Queen's Park. However, the 8pm show has been sold out, so they have added a 6pm one. The details are:

- Tim Batt as MC and Tom Sainsbury as the headline act
- It is a one-hour show.
- The price is \$30.
- Tickets are available at [eventfinda](http://eventfinda.com) or find the link via their website, www.hellocomedy.co.nz, also Facebook or Instagram.



Comedian Tom Sainsbury performing October 28

lington Paranormal and his new feature film Loop Track.
Tim Batt is a two-time Billy T nominated comedian who co-hosts The Worst Idea of All Time (NZ's most successful comedy podcast with over 20 million downloads). He has hosted TVNZ's Duke's Banter and has featured on 7 Days, The Late Night Big Breakfast and more. He has performed all over the world, including Australia, USA, the UK and throughout NZ.

TICKET GIVEAWAY
The RCP has a double pass to give away to one of our readers, in a draw. All you have to do is to email us your name and daytime contact phone number, putting 'comedy' in the subject line. Alternatively, you could bring this information into our office at 52 Ingestre Street.
The draw will be made at noon on Friday, 20 October.

REAL ESTATE
spring A fresh start!
For a FREE market appraisal on your property, talk with Marion Farr today!
Experience + Expertise = Results
Please call Marion Farr on 021 572 033 or (06) 343 8228
Email: marionfarr@xtra.co.nz
SOLD
THE WATSONS
ROSS WATSON REAL ESTATE NIENZ
Licenced under the Real Estate Act 2008

TRADES AND SERVICES
Family Fun ENTERTAINMENT
Bouncy Castles • Obstacle Courses • Slides • Sports Gear & Extras • Rides & Foam Cannon • Concession Gear
Phone Jason 021 174 5035
www.family-fun.co.nz

vega
Get Your Best Mortgage Here
Natalie Sara
Residential & Commercial Mortgage Adviser
022 164 1566
natalie@vegalend.co.nz
www.vegalend.co.nz

100% locally owned
Dave Hoskin CARRIERS LTD
Furniture removals door to door
National and international
390 Heads Rd, P.O. Box 5042 Wanganui
Phone: 06 344 7002 Email: darrell@hoskincarriers.co.nz

MONKEY BUSINESS Tree Care
Eddie White ARBORIST
mbtreecarenz@gmail.com
027 385 6597
www.monkeybusinessnz.com
OUR SERVICES
pruning • tree removal • hedge trimming • reductions • storm damage maintenance • planting
Get in touch for a FREE quote!

Horizons Notes

A personal view with Cr David Cotton

Over \$100 million for electric bus contract

There was much fanfare after Horizons announced in April this year it would become the first Regional Council in NZ to offer a fully electric bus service for Palmerston North and Ashhurst; it will be the largest fleet in NZ starting in February 2024.
We hit the 6pm news on TV, local radio and newspapers covered this monumental achievement. This public statement came after a council meeting held on 28 March 2023, which was held behind closed doors to award this nine-year contract.
What did surprise me was that no one asked what the cost of this level of service was going to be. I have been asking for the paper that was derived in PX (Confidential to Management & Councillors) to be made public over the last few months, as I'm a strong believer in open and honest communication with our rate payers and community that we represent. My wish was granted at the Council meeting Tuesday, 26 September 2023.
So now I can talk about the \$100 million plus nine-year contract (plus inflation adjustment costs). This is not to throw anyone under the bus, but to ensure those that are paying understand the costs associated with what I personally view as a gold leaf level of service.
The initial recommendation from Horizons

management was to run approximately a 78 percent electric fleet, with 22 percent of the fleet being the highest emission standards diesel buses, only to be used at peak demand times, saving millions on the fully electric option.
At a time of a Cost-of-living crises, I was somewhat surprised when Councillors pushed to change the recommendation to a fully electric service. The cost of even the part-electric service was going to be substantially more than forecast in the 2021 - 2031 Long-Term Plan, with inflation costs soaring.
At the time of writing, I have not been given what the cost will be to rate-payers, but it will be up substantially on the current \$13 per \$100,000 of capital value, my guess would be north of \$20 per \$100,000 of capital value.
I will watch with interest to see if Horizons obtain the fare recovery budgeted for and what the operational cost will look like with the anticipated addition of Road User Charges on EV Buses in 2025!
How did I vote? I supported the motion because it was moved by a Palmerston North councillor, seconded by the Chair of Transport Committee along with very strong support from all the Palmerston North Councillors. It is those councillors that represent the people that will be paying the full cost/ impact of this decision.



sion.
The motion was passed by majority with one councillor abstaining.
Transport is one of the few areas of business Horizons undertakes that the location of the people who benefit from the level of service also directly pay for it. There is no cross-subsidy from around the region, so it does not affect our transport rates in Whanganui.
The total cost of this bus service is shared between partners Central Government - Waka Kotahi who are the key funding partner at 51 percent of the net cost after deducting fare recovery, Massy University along with Horizons rate payers in Palmerston North and Ashhurst.
I will now be interested to see the reaction of rate payers in Palmerston North when they fully understand the true cost of this service. It is for them to decide if it's money well spent.
Next year, we will be having the discussion on the cost of the Whanganui Bus service in the LTP, so watch this space.
Remember, I am here to represent you. Contact me at any time. I'm working hard to ensure we have an affordable place to live, work, and play.
- Cr David Cotton
Mobile 0274425920
david@tasmantrust.co.nz

NEED HELP?

Emergency.....111

City Mission/Foodbank 345 2139

Women's Refuge Wanganui 344 2204



CLASSIFIEDS

52 Ingestre St Ph 345 3666

Email: rivercitypress@xtra.co.nz

Nominate someone you think is deserving of our **Bouquet of the Week!**



Email or facebook message us with your nomination and reason why they deserve to win!

email: rivercitypress@xtra.co.nz
facebook: River City Press Wanganui



FOR LEASE

FOR LEASE

**Office Space
Central City Shops
City Apartments
Big Secure Storage
for Planes, Boats, Buses etc.**

**Ph Craig, the local landlord
0274 434 432
Mitchell-Anyon Developments (MAD)**

WORK WANTED

A builder, renovator. Plumbing, electrical, painting etc. Large and small jobs. Quality workmanship guaranteed. Rates negotiable. Call Leo, 027-4331431, (06) 927-5289. **COMPETITIVELY** priced builder/handyman for decks, pergolas, fences, renovations - all manner of work, big or small. Phone or text Jason 021-741-908.

HOME Maintenance and Shifting, House Clean-up, Gardening, Lawn-mowing, Water-blasting, Spout Cleaning, De-Cluttering. Anything Considered. Ph Ray 027-280-7015.

MOBILITY scooters. Sales, service, repair, rental wheelchairs, walkers, ramps. Call Graeme 021-1195118 or (06) 347-6927.

PROFESSIONAL/efficient Painter and Plasterer. No job is too small. Reference available. Call or text 022-035-0175.

FIREWOOD FOR SALE

AFFORDABLE firewood starting from \$50 a cubic metre for sale. Please phone us on (06) 343-8466.

FOR SALE

1983 Mazda Familia "TLC Project" rare 2-door, many original features, auto sunroof, rego on hold, needs new battery, rust repair and paint job. For viewing TXT 027 223 0284 (TXT only).

BLINDS - Roller & Venetians to order. Free measure and quote. Strath Davis Furniture & Flooring, Ph (06) 345-0883. **NEW** books available at River City Press, 52 Ingestre St. "From the Sea to the Mountain"; "Whimsical Tales of Old Wanganui"; "More Whimsical Tales of Old Wanganui"; "My Life - Annasophia".

NEW Season's Buxus box hedging Plants 10 for \$50.00, Good range of Native plant revegetation stock, \$6.00 each. Side dress your Polyanthus and Primulas with Dried Blood only \$8.00 per kilogram. Parnells Quality Tree and Shrub Nursery, 102 Fox Road Wanganui, Phone 344-6645, Established 1895.

PERSONAL

FREE confidential health checks, STI and HIV screening. Wanganui Hospital. Phone for consultation 348-1775/021-323-077.

LAWNMOWING + GARDENING

LAWNMOWING + gardening work wanted. Free quotes, phone or text 022-540-3375. **LAWNMOWING**, section tidy-ups, pruning, WINZ quotes. TEL-TX 06-344-2535 021-0899-2345.

LAWN MOWING



Keeping Lawns & Costs Down!

- Locally owned & operated
- Pensioner discounts
- WINZ Quotes
- Ride on work

Wayne Bishop
Phone
027 555 3074

AFFORDABLE LAWMOWING
Great quality service, great price. Pensioner rates available.
Call Paul on
021 245 4999

PAINTER

Painted Beams
All House Painting
Waterblasting
Oven Cleaning
Ph Ron - 021 127 0456
or 06 345 4747

SECTION 101 SALE AND SUPPLY OF ALCOHOL ACT 2012

LunarTech Limited, 30 Drews Avenue, Whanganui has made application to the District Licensing Committee at Whanganui for the variation of conditions on renewal of an On License in respect of the premises situated at 30 Drews Avenue, Whanganui, known as Porridge Watson.

The General nature of the business conducted under the license is a Tavern. The Days on which and the hours during which alcohol is intended to be sold is **10.00am to 1.00am the following day, Monday - Sunday.**

The application may be inspected during ordinary office hours at the office of the Whanganui Licensing Committee, 101 Guyton Street, Whanganui.

Any person who is entitled to object and who wishes to object to the issue of the licence may, not later than 25 working days after the first date of the publication of this notice, file a notice in writing of the objection with the Secretary of the District Licensing Committee at DLAdministration@whanganui.govt.nz.

No objection to the issue of a license may be made in relation to a matter other than a matter specified in section 131 of the Sale and Supply of Alcohol Act 2012.

This is the second publication of this notice.

The first notice was published on October 5, 2023.

WEBSITE DESIGN

GET a stunning, contemporary website at minimum cost, or give your old one a strategic revamp. Phone Peter on 020-4161-3506 or email peter@toucan.media.

GUEST HOUSE

FURNISHED room or caravan for a single person, big TV, lock on door. New kitchen & bathroom. By Collegiate. Large section, quiet, sunny. No bond. Phone 027-344-6699.

AT CLUB METRO THIS WEEK

Friday 13 October
Raffles, Membership Draw, House and Karaoke
Saturday 14 October
DJ playing from 7pm

CLUB metro 13 Ridgway Street
Phone 06 349 0149

Calling all motorcycle riders

Come along for:
Maintenance checks with a mechanic
Yummy Free BBQ
Free Coffee
Giveaways and more!

Marshall Motorcycles
143 Ridgway St, Whanganui
Saturday 14 October
9am - 12pm

CELEBRATE MOTORCYCLE AWARENESS MONTH

WANGANUI EAST CLUB

MEMBERS DRAWS MUST GO!
THURSDAY 19 OCTOBER
\$1000 - 6.30pm
\$200 - 7.00pm
\$400 - 7.30pm

101 Wakefield Street, Wanganui East
Phone 06 343 7023

WANTED TO BUY

GINZA. Always buying, always selling. Good used furniture, antiques, China and collectables. Call Ginza 345-3154

RANGES + dishwashers in reasonable condition etc. Can pick up. Please Ph: 344-7503 or 021-0823-6126.

WANTED TO RENT

EMPTY section or paddock to park self-contained van. Single male, quiet, no pets. Text only 021-185-9553.

PRODUCE

FRESH vegetables available, open Thursdays, Fridays. Laugeson's Gardens, Westmere Road.

PUBLIC NOTICES / ENTERTAINMENT

BOX OFFICE **WHANGANUI VENUES & EVENTS**
ROYAL WHANGANUI OPERA HOUSE
Ph. 06 349 0511
Online bookings www.whanganuivenues.co.nz
Hours: Monday to Friday 10am - 1.30pm

Booking / service fees apply to all ticket sales.

LADIES NIGHT - NZ's successful Comedy, written in 1987 and precursor to Magic Mike
Sunday 15 October 7.30pm
A reserve \$82.50 Group 8+ \$67.60 B reserve \$72.50

QUEEN: IT'S A KINDA MAGIC
Friday 27 October 8pm
Adult \$70.45 Groups 6+ \$65.45
Senior \$63.70 Child to 12yrs \$44.80

SCHOLA SACRA CHOIR
GOD SO LOVED THE WORLD
Saturday 28 October 2.30pm Christ Church
Adult \$26 Senior \$21 U18s free

HARMONIC RESONATORS - RONGO KI TE ORO TOUR
Friday 3 November 7pm Concert Chamber WMC
Tickets \$58

Sharyn Underwood School of Dance
THE MAGIC IS CALLING
Saturday 4 & Sunday 5 November 5pm
Adult \$19 Senior / Student \$16

ELTON JOHN vs BILLY JOEL NZ tribute
Sunday 12 November 7.30pm
A & B reserves: Adult \$72.60 - \$57.60
Senior \$62.60-\$47 Student/Child \$57.60-\$42

BILL BAILEY - THOUGHTIFIER
Tuesday 14 November 8pm
Premium \$99.90 A Reserve \$89.90

THE SWEET CAROLINE TOUR - tribute to Neil Diamond
Saturday 18 November 8pm
Adult \$70.45 Senior \$64.05 Group 6+ \$55.45ea
Child to 12yrs \$44.80

2024

WHANGANUI OPERA WEEK
Aotearoa NZOS Recital - Wednesday 10 January 1pm
Whanganui Museum Tickets \$25 Student \$15
In Praise of Music Oratorio - Sunday 14 Jan 11.30am
Collegiate Chapel - Tickets \$20 Student \$10
Public Masterclass - Monday 15 Jan 7.30pm
PEA Collegiate School Tickets \$25 Student \$15
Great Opera Moments - Saturday 20 Jan 7.30pm
Opera House Tickets \$50 Student \$40
Package deal for all 4 events \$110

RUSSELL HOWARD
Monday 5 February 8pm
Tickets \$89.90

MICHAEL JACKSON HISTORY SHOW
Tuesday 20 February 8pm
Adult \$74.45 Group 6+ \$69.45
Senior \$67.65 Child to 13yrs \$44.80

THE BEACH BOYS EXPERIENCE
Sunday 2 June 7.30pm
Adult \$71.60 Senior/Student \$66.60
Group 6+ \$61.60 Child to 17yrs \$51

MAGIC MEN AUSTRALIA
Saturday 13 July 7.30pm
A Res \$101.60 B Res \$81.60 C Res \$61.60 D Res \$41.00

We can sell to Ticketek NZ events

SERVICE AND CREDIT CARD FEES APPLY
BOOK EARLY FOR THE BEST SEATS

HEALTH

JADE Traditional Thai Massage. Excellent massage at reasonable prices. 64 Guyton Street. Phone 348-8466 for an appointment.

DOG WALKING SERVICE

DO you wish you could give your dog the exercise they need, without having to walk them yourself? Call/txt 022-010-3577.

BUYING and SELLING USED FURNITURE



Phone 345 3154
54 Maria Place Extn
Email: ginza2@xtra.co.nz



COLOURPRO PAINTING

Interior and Exterior
Fully Qualified • Free Quotes

WE PAINT SO YOU DON'T HAVE TO!

Now's the time to book in your winter painting projects

Phone Ash Regan 027 856 1779
Email colourpropainting21@gmail.com

Top Service



only a phone
call away!



ALL YOUR INK AND PRINTER NEEDS

Find us at
143 Victoria Avenue
Whanganui Photo & Print
06 348 0449
cartridgeworld.co.nz



Cartridge World
Trusted Printing Solutions



Providing quality care and education for 0-6
year olds in our friendly and welcoming centre.
Don't miss the boat!

20 HOURS
FREE
for 3 to 5
year olds

Opening hours are
6.30am-5.30pm
Monday - Friday

Call or visit us today
19 Tawa Street, Gonville. Ph 347 7941



WANGANUI

CONCRETE

CONTRACTORS LTD.

For all your Concreting Needs.



Mobile: 0274 905 580

Cremate-a-Mate Pet Cremations

Individual cremation
Scatter box - Rimu box - or your own urn
2-3 days turnaround where possible
Pick-up & delivery included



Bryce & Sandy
06 348 0133
cremateamate@xtra.co.nz
Wanganui

DIY DEALS

Landscaping | Building | Fencing



See us for all your:

- Landscaping
- Building & Fencing Supplies
- Posts & Rails
- Custom Made Trellis & Gates
- Decking Timber
- Farm Fencing Products

The Canvas Man W A N G A N U I



- * PVC Drop Curtains
- * Caravan Awnings
- * Crate Covers
- * Trailer Covers
- * Truck Tarpaulins
- * Ute Covers
- * Stone Chip Guards
- * Motorbike Seat Recovering
- * Custom Car/Motorbike Covers
- * Boat Covers
- * Custom Boot Liners

14 Halswell St, Wanganui.
Phone 06 343 8286 Mobile: 021 022 38519
Email: kazcet@xtra.co.nz



eastown

TIMBER &
FENCING

BuildLink
Buy Better Build Better

06 349 0040

4 HOLYOAKE STREET, WANGANUI EAST
WANGANUI 4500

www.eastownbuildlink.co.nz

Top Service



only a phone call away!



DURIE HILL FISH SHOP



HOURS:

Tues - Sun
4.30pm - 7pm

Fri 4.30pm - 8pm

63 Portal Street Ph 345 0313

WANTED

ANY Cars Wanted Dead or Alive



TOP CASH PAID

\$100 - \$1,000 for small car

\$100 - \$7,000 for 4x4 UTEs Vans, 4WD, Trucks, Buses

Ph Today 021 032 3006

Text: 022 535 0807

We will beat any prices in the market by 10%



Whanganui Photo & Print
143 Victoria Avenue, Whanganui
Phone 06 345 6144
› Capture › Print › Personalise

PASSPORT PHOTOS

NO APPOINTMENT NECESSARY

- NZ Passport
- Foreign Passport
- Baby Passport
- Visa / Immigration
- Firearms Licence
- Kiwi Access Photo
- ID Photo
- Profile Photo

SUPPLIED PRINTED OR DIGITALLY



DENT MASTERS
PAINTLESS DENT REMOVAL

Paintless Dent Removal (PDR) is a complete process to remove dents and dings on your vehicle.

This environmentally friendly technique restores your vehicle to its original condition without the use of paint and body fillers traditionally used by other repair methods.

M: 021 065 7421

E: dentmasterspdr@outlook.com
www.dentmasterspdr.co.nz

Dent Masters PDR
 @dent_masters_pdr

Home Maintenance & Glazing Services LTD

Locally Owned

Repairs to

- Broken Windows
- Steel Window Repairs
- Handles & Door Roller
- New Work
- Handyman Services
- No Jobs too Small

Ph: 06 342 4780

Mob: 027 237 0562

Email: HMGS@inspire.net.nz

ALL WINDOW AND DOOR MAINTENANCE

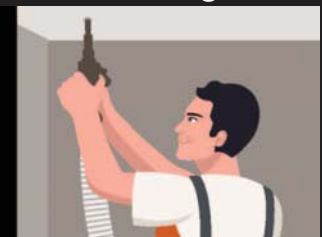


WALL INSULATION WITHOUT RENOVATIONS

Internal

External

Ceiling



'Contact us today and start saving tomorrow'

ARBORIST

A specialist who cares for, and maintains trees.
If this is what you need, call the experts for
"Quality Service at Affordable Prices!"



BAZ BROADHEAD

Qualified Arborist

Ph 021 287 3330, A/H 06 347 8221
for your FREE no obligation quote

INSULMAX
WALL INSULATION SYSTEM

Our install teams are all trade certified. insulmax.co.nz

CONTACT: Stephen Jestin 027 323 1000 or Email: kathleen@insulmax.co.nz



Aramoho 16 Spier Street



Open Home



Sparkling on Spier

Welcome to 16 Spier Street, where the perfect blend of comfort and style awaits you! This exquisite four bedroom property has undergone a complete transformation, both inside and out, resulting in a home that is ready to impress. The lounge is equipped with a heat pump and a wood burner, ensuring that you and your loved ones stay warm and comfortable during the chilly months. At the heart of the home is a brand-new kitchen and a fully renovated bathroom. Priced to sell at enquiries over \$449,000, this property offers incredible value for a modernised four bedroom home.

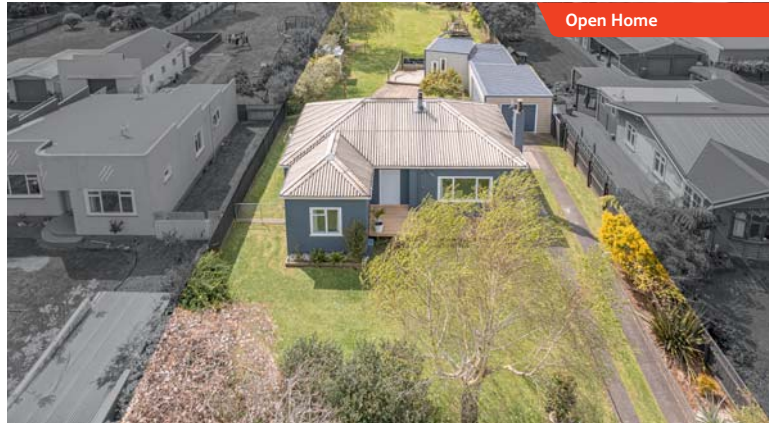
4 1 1

For Sale Buyers \$449,000+
View Sun 15 Oct 2.00 - 2.30pm
Web pb.co.nz/WGU170365

Anthony Floyd
M 021 477 435

Leighton Toy
M 027 415 1515

Aramoho 32 Stewart Street



Open Home



Uncover the hidden gem

Prepare to be pleasantly surprised by this extraordinary offering. 32 Stewart Street presents a unique blend of space, style, and versatility that exceeds your initial expectations. With three bedrooms which include a detached studio room, two bathrooms, a workshop space and a sprawling 1,373 m² (approx) section, this property is a treasure waiting to be discovered. Step inside and you'll be greeted by a tastefully modernised interior that seamlessly combines functionality and aesthetics. The open living area is perfect for both everyday living and entertaining.

3 2 1

For Sale Buyers \$529,000+
View Sun 15 Oct 2.00 - 2.30pm
Web pb.co.nz/WGU170710

Anthony Floyd
M 021 477 435

Leighton Toy
M 027 415 1515

Whanganui East 12 Kaka Place



Open Home



Easy living on Kaka Place

12 Kaka Place is a delightful, well-maintained home that's perfect for first-time buyers. Nestled in a peaceful cul-de-sac, this property offers comfort, convenience, and great value. The house offers three good-sized bedrooms, all with built-in wardrobes and a spacious lounge. The generous backyard provides space for gardening, play and outdoor gatherings. Imagine sunny afternoons and barbecues in this tranquil setting. The detached garage provides additional space for storage or even a home gym. 12 Kaka Place is an affordable, move-in ready property ideal for first home buyers.

3 1 1 1

For Sale Buyers \$349,000+
View Sun 15 Oct 1.00 - 1.30pm
Web pb.co.nz/WGU171259

Anthony Floyd
M 021 477 435

Leighton Toy
M 027 415 1515

Westmere 15A Caversham Road



Open Home



Luxury lifestyle living on the outskirts of town

Deadline sale - all offers to be received by 2.00pm, Wednesday 18 October 2023 (unless sold prior). Discover the perfect blend of spacious living and rural charm at 15A Caversham Road. This exceptional property offers a rare opportunity to embrace a life of tranquility and luxury. With a substantial four bedroom home, generous living spaces, and even horse stables set amidst four good-sized paddocks, this is a dream property for those seeking an idyllic country lifestyle. The house offers ample space for your family to grow and thrive. Each room is designed with comfort and relaxation in mind.

4+ 2 2 2

For Sale Buyers \$1,150,000+
View Sun 15 Oct 3.00 - 4.00pm
Web pb.co.nz/WGU162944

Anthony Floyd
M 021 477 435

Leighton Toy
M 027 415 1515