



52 Ingestre Street, Whanganui. Phone 345 3666 or 345 3655, email rivercitypress@xtra.co.nz

Leonie celebrating her 90th with fundraising party on Melbourne Cup Day

BY DOUG DAVIDSON

Leonie Symes knows how to celebrate. After her 80th birthday, she did the Tongariro Alpine Crossing, and now for her 90th on Melbourne Cup Day, on Tuesday, 7 November, she will be celebrating in style with a Lexus Melbourne Cup function on her property in Tayforth Road.

Leonie was born on the first Tuesday of November 1933 – the same day, she points out that “Hallmark won the Melbourne Cup.” Horses and horse racing became a lifelong passion.

But so has singing from the time the Head of Music at Marsden School recommended, “I have my voice trained.” She started in Whanganui, but as there was no singing school in

New Zealand in the 1950s, Leonie headed off to London and, after auditioning, got a place in National Opera School in London as the youngest student at that time. She went on to have a career as an opera singer and promoter.

But in the early days, Leonie was performing as an extra at Convent Garden and La Scala in Italy, where she met the famous opera singers of the time.

Her big break, however, was back in New Zealand when she won the Wellington Competitions Open Aria. This led to her singing with the Israel National Opera for two years, over 1967 to 69. She recalls, “I just fronted up for an audition. They needed a soprano, and I stayed for two years. My greatest honour was to sing the lead role of Abigail in Verdi’s opera ‘Nabucco’ in Tel Aviv.”

Heading back to London, she soon became “disenchanted with the self-centred, completely self-involved life of a professional opera singer – so I decided to study for a Diploma of Sociology to work as a social worker.”

She still sang as a semi-professional opera singer around London in operas such as Madam Butterfly, Aida, and Il Traviatore. Her daytime work was as a tour guide around London and England and working in school care social work.

She returned to New Zealand permanently in 1981, combining singing

in Auckland and Christchurch with the Opera Workshop Company while working as a tour bus driver for Scenic Tours around Auckland and the region.

However, her passion for horses never left her. Living as a youngster in Whanganui, she not only received an ‘A’ Certificate with the local Petre Pony Club, but also was appointed a ‘Whipper-in’ (Like a whip in Parliament – in charge of any unruly parliamentarians or, in her case – the hounds) for the Egmont Whanganui Hunt Club. She was the first female to achieve these honours.

While in Auckland, Leonie was given “a slow race-horse.” To look after it, she went to live in Cambridge in the Waikato, “earning my keep as a housekeeper for a farmer/horse owner/trainer of racehorses.” But she maintained her singing, working with Waikato Opera.

She wanted a permanent area of land for her house and herself – so returned to

Whanganui buying land on Tayforth Road. To pay the mortgage she taught singing in secondary schools around Whanganui as well as doing a number of other jobs.

In 1995, the Wanganui Music Society wanted to celebrate 25 years, and Leonie offered to set up Opera Wanganui, and she took on the role of Artistic Director. Opera Wanganui eventually performed seven operas, seven musicals and 17 concerts.

“My special pride was singing with a young tenor, Simon O’Neil, who later became one of the top tenors in the world.” Other protégés were Andrew Sritheran, who also became an international leading tenor, as did Jud Arthur.

“The greatest joy,” Leonie says, “is seeing the young singers who have done well after a little leg up in this fiendishly competitive and difficult profession of opera, singing around the world.”

Continued on page 3



Leonie Symes

WANGANUI BEDROOM Specialists
OPEN 7 DAYS
 Locally owned & operated
 151 St Hill Street, Wanganui
 Phone 06 345 6084

Harcourts
 Whanganui
 Looking to sell?
 call me
Paula Siddells on
027 500 1242
 for an award winning sales agent who gets results!
 #siddellssells

Paula Siddells
 Licensed Real Estate Agent REAA 2008

UP TO
50% off.
 New Sleepyhead Chiropractic.

30 months interest free*
*On in-store purchases \$999 & over 'till 14.11.23.

Endorsed by the NZ Chiropractors' Association

DIMOCKS HOMESTORE
100% BedsRus PH 06 348 4877
 190 VICTORIA AVE, WANGANUI **OPEN 7 DAYS**

Your New Kitchen
 Elegant, Unique, Handcrafted

ROB O'KEEFE
 JOINERY

06 344 5040 | okjoiner.co.nz
 368 Heads Road, Wanganui

Joinery | Kitchens | Stairs
 Doors | Windows | Commercial

Campus Open Events

Scan the QR code to register a time to come and see us.

ENROL NOW
 We have courses in:

- Animal Care
- Rural Animal Technician
- Carpentry Level 3
- Agriculture Level 3 - Dairy

AGC TRAINING FOR INDUSTRY
 CHALLENGE YOUR FUTURE! WHAKAACHIA TO WERO

Call 0800-348 8215 www.agctraining.co.nz

Check out what's in this week's RCP

You would never believe that Leonie Symes is turning 90 (see our front-page story). She has so much energy, and she is putting a lot of that energy and her organisational skills into preparing her Melbourne Cup event. Perhaps the key to her energy is her background in music and horses – but she has also worked as a social worker in schools, a music teacher, and a tour bus driver.



Doug Davidson
journalist@rivercitypress.co.nz

There are some very interesting and different events coming up, including:

- Diwali celebrations on 28 October. 600 people attended last year (page 8).
- Trunk or Treat on 31 October. A safer way to do something for Halloween. (page 18).
- The Fordell School raffle on 11 November. It sold out last year (page 3).

For those concerned about what is happening in Israel/Gaza, there is a 'Vigil for Gaza' this Sat-

urday from 11am to 12 noon outside the Tramshed (page 3).

You might be interested to see how people voted for candidates in your part of Whanganui. Check out the booth-by-booth results. Thanks to Tony Stuart for supplying them (page 17).

Congratulations to Whanganui Rotary for installing their second free Book Exchange. This is next to Cliff Dental in Cross Street, Castlecliff (page 5).

Pasifika for Pasifika Expo 2023 this Saturday

The Whanganui Pasifika community is coming together to make a difference. They have organised a Pasifika for Pasifika Expo 2023 at Springvale Stadium on Saturday, 28 October, from 11am to 2pm. They promise a fun-filled day for the whole family. It is an opportunity to come and get to know the support services throughout the community. It is also a chance to relax and enjoy Pasifika entertainment and food.

In a time when compassion and solidarity are needed more than ever, the expo is about creating connections, providing assistance, and ensuring that no one is left feeling isolated. Together, they say, "I may not be able to help, but I know someone who can." The bonds formed at this event will serve as a foundation for the future as providers gather to "serve our people" and extend their support networks.

The event is being supported by the various Pasifika community leaders throughout the region and is being sponsored by the Whanganui Regional Health Network, Te Whatu Ora / Health New Zealand and the Whanganui District Council.

Led by the team from the Whanganui Regional Health Network, the Pasifika for Pasifika event "holds significant importance for our community by fostering unity and building rapport within

the Pasifika community itself."

This event will showcase a broad cross-section of community services and providers, plus provide an opportunity for important health interventions such as immunisations and vaccinations to be done onsite. Many Pasifika families are new to the area so the expo will be an important source of information.

Over 40 stallholders are expected, featuring community funders, education providers, youth support organisations and training and employment providers. There will be Pasifika performances throughout the day.

Event coordinator William 'Gumz' Pati, a nurse and community connector has been working closely with the Pasifika communities throughout the region, Pati explains, "We observed and recognised the decline in vaccination rates within our Pasifika communities as an area of concern for our people. As a team, we secured funding to hold a vaccination event in the community in an environment that is friendly, supportive, fun, and safe".

Whanganui Regional Health Network, the Pasifika for Pasifika event holds significant importance for our community by fostering unity and building rapport within the Pasifika community itself.



William Pati with the organising group

Judging Whanganui for the 'Most Beautiful Small City' Award

Heather Saunderson, CEO and judge of Keep New Zealand Beautiful, was in Whanganui on Thursday to talk with Whanganui District Council and to view what is happening in the city, and then to report back to the other judges.

Whanganui is up against New Plymouth for the title of the 'Most Beautiful Small City.' We do have an impressive pedigree, winning the title back in 2019, again in 2020 and then being a finalist in 2021.

Judgement is based on four factors as follows:

- Number of nominations as a % of the population
- Litter prevention and waste minimisation initiatives
- Community beautification projects
- Recycling projects.

Each factor is out of 25%.

Heather said that, "I have been impressed with the progression over the past four years." This is her third visit for Keep New Zealand Beautiful. She referred to the "extension of environmental education into schools," the creation of street art and the development of living spaces such as in Drewe's Avenue.

She is also impressed with how the city has gone about unifying the environment, focussing on combining heritage and culture and creating sustainable spaces for the community. The building of fishing platforms as part of the Port development was one example she gave, as well as the promise of a platform that kids can use to safely jump off.

The involvement of community groups, assisted by Council funding, was another big tick, making developments more community-led. The Green Bike programme is a good example.

She was pleased to see efforts being made to re-



Heather Saunderson

duce our carbon footprint with more cycling paths and an adaptable curbside recycling programme, as well as a very successful, improved bus service. The awards will be announced at a function at Parliament on 9 November.

Copyright: River City Press produces and/or publishes advertisements strictly on the basis that River City Press is entitled to and owns the copyright in the advertisement so far as the copyright relates to publication or reproduction for publication in any newspaper, magazine or similar periodical or to broadcasting of the advertisement.

Community consultation for Rutherford Junior High

In a world where effective communication is more important than ever, Rutherford Junior High School is proud to champion the partnership between parents and teachers, recognizing that it plays a vital role in the educational journey of our students.

That is why on Friday, 3 November, the school will be inviting the community to join them for consultations on the direction of the school. Everything is open for discussion, from curriculum design to updating the school logo. The original date had to be changed, with the new 3 November date having two sessions – one at 3.15pm and another at 6.15pm. Food will be provided, and childcare for the 3.15pm session. Anyone with an interest in Rutherford – whether they are ex-students, parents or members of the local community residing in the area – is most welcome to join this shared space and contribute.



'Making every deal a big deal'

Moving times, moving values

For a FREE no obligation appraisal give Bruce a call.

Bruce McGhie
Commercial Sales Consultant
M 027 333 2587
E bruce.mcghie@pb.co.nz



pb.co.nz
Property Brokers Ltd Licensed REAA 2008

Property Brokers®

Make your health a priority

VICTORIA DENTAL

Make an appointment today

06 345 3222

Victoria House

1a Rutland Street, Wanganui

Leonie celebrating her 90th with fundraising party on Melbourne Cup Day

Continued from page 1
The Melbourne Cup Party at 'Villa Verde' will include horse riding in the arena. Leonie might have turned 90, but she will be one of the riders. In the garden area, there will be afternoon tea, 'Fashion in the Field' (for both males and females) and, of course, a sweep-stake for the upcoming race.

Following the race, there will be bubbly and cake, the latter comprising three horse heads ('Kiwi', Leonie's horse 'Kal' and 'Blossom Lady', a top racer owned by Catherine Wilson.) The cake, delivered by

Dale Pullins of Bushy Park fame, will be baked in his kitchen. As Catherine works for the SPCA, the event will also be a fundraising for them, with participants encouraged to give a koha for the cause.

Annual heritage tomato plants giveaway November 4

Volunteers for the Heritage Food Crops Research Trust Whanganui will be at the Saturday Market on 4 November, giving away 1400 free heirloom tomato plants. There will be five varieties, all chosen for their good levels of bioavailable lycopene.

Researchers at the Trust have been following the international tomato research and the potential of the powerful antioxi-

be doing nearly all the catering and organising. She had booked a marquee and a gazebo so the event will run, rain or shine.

As part of the celebrations, Leonie will be joined by Barbara Williams. Along with the late

Anne Lupton, the three of them were friends since they were five years old.

After her 80th, now 90th, what will Leonie plan for her 100th? She is thinking in terms of jumping out of a plane in a tandem skydive.

Fordell School's very popular garden ramble returns



Fordell has run two previous garden rambles as fundraisers. The latest in 2021 was sold out. This third ramble is on Saturday, 11 November, and it would pay to buy tickets sooner than later. Over 200 tickets have been sold already.

The ramble will encompass 11 gardens and homes, with some homes or parts of them also open to be viewed. There will be some favourites from 2021, but a range of new ones from Fordell into Whanganui township.

The ramble opens at 9am and goes through to 4pm. Go to the school first to pick up your map.

Tickets cost \$40 and can be purchased from www.trybooking.co.nz/OJH. For an extra \$25 you can order a delicious picnic hamper for your lunch supplied by Honest Kitchen.

The event is sponsored by Bayleys Realty. Funds raised will go towards a new all-purpose Astro-turf for the school.

The school itself has

had significant growth in recent years, leading to some new facilities as well as an increase in student numbers to around 130.

Vigil for Gaza at Saturday market

Scott Taylor Moore was part of the Vigil for Gaza last Saturday and wrote to us as follows:

On Saturday morning at the Riverside market, what started with the quiet vigil of two nuns grew to 50 people as members of the Whanganui's Palestinian community and concerned citizens rallied in a peaceful gathering to create awareness of the dire situation in Gaza.

Whilst utterly condemning the attacks of Hamas on 7 October, the people expressed their dismay and concern at the ongoing assault on the innocent within Gaza.



The action attracted a wide mix of people, including Jews, Christians and Muslims from within Whanganui. There were

similar rallies throughout Aotearoa-NZ and the world.

There will be another gathering next Saturday

between 11am-12pm, near the tramshed on Taupo Quay, and all peaceful supporters of humanity are welcome.

THOMPSON
PLUMBING & GAS LTD

Master Plumbers

- General Maintenance Plumbing
- New Builds and Renovations
- Programmed Maintenance
- Drainage and Unblocking
- Gasfitting Service
- Hot Water Systems
- Heating
- Septic Tanks and Wastewater Systems
- Rain Water Tank Installation

06 345 0924
office@thompsonplumbing.co.nz
thompsonplumbing.co.nz

SUMMIT
Electrical

Top Service • Top Workmanship • Top Electricians

- 24/7 Service
- FREE Quotes
- Member of HAZARDCO
- For all your electrical requirements

Summit Electrical Services Ltd
0800 2 SUMMIT
0800 2 786 648
Todd Cowan - 022 325 0056

Member MASTER ELECTRICIANS
Electrical Contractors Association of NZ

Find us on Facebook

Gonville superValue
just what you need

THIS WEEK'S SPECIALS

Pork Mince only \$7.99/kg

\$15 Trays Crumbed Beef Schnitzel only \$10.00 each

WEEKEND SPECIAL

only \$13.99/kg **Frozen NZ Scotch Fillet Roast**

Whole Neck Dog Bones only \$1.99kg
Fifteen \$5 Meat Trays still only \$60

PRODUCE

Capsicum only \$1.99 each

Telegraph Cucumber only \$2.29 each

NEXT WEEK'S SPECIAL - STARTING 30.10.23

Frozen Lamb Leg Chops Plain, Crumbed or Marinated only \$12.99/kg

1/2 price only \$10.00 each

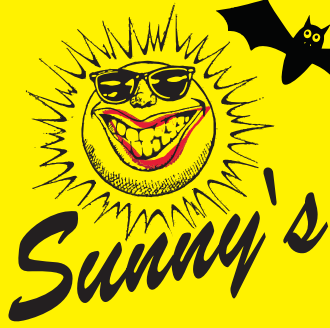
\$20 Trays Pork Slices Plain or Marinated

All items while stocks last (no rainchecks). Get in early.
47 Abbot Street, Gonville. Ph 06 344 3002
Open 7am-8pm - 7 days

WANGANUI AERO CLUB

Experience the joy of flight!
Flights from **\$220**
30 minute trial flights

Contact us on 06 345 0914
or email: info@wanganuiaeroclub.co.nz



HALLOWEEN

is creeping up!

From \$2.99 to \$45.00



Fake Blood



Make Up Sets



Decorations



Masks



Stickers



Signs



Treat Buckets



Scary Costumes - All Ages



Non Scary Costumes - All Ages



Glasses



Mugs



Inflatable Grim Reaper in a Bubble

was \$69.00
NOW
\$29.99

Power Steel Frame Pool
9.56m x 4.88m x 1.32m



\$2,999

Steel Pro Max Pool Set
4.57m x 1.22m



\$599

Steel Pro Max Frame Pool Set
3.66m x 1.22m



\$579

10ft Beachside Round Framed Pool



\$500

Sunny's Whanganui 161 Victoria Ave, Whanganui 06 348 4700

Check out www.sunnys.co.nz for more great deals

Join Our Club, Get \$5 Store credit for every \$65 spent in store

Prices & Promotions valid 26/10/2023 - 4/11/2023 (until stock lasts). Discounts & Offers are based on original retail prices. Images and Colour may vary from actual product. Not all products are available at all stores.

- Forum set to highlight tourism success -

Following four months of Whanganui topping the national tables for domestic tourism growth, the people responsible for promoting this beautiful city are delving into its visitor industry success.

Whanganui & Partners is the Regional Tourism Organisation responsible for enticing visitors to the region and enhancing Whanganui's reputation. The agency has invited guest speaker David Perks, Chair of Regional Tourism NZ, to its Public Forum to give an expert view of what's driving Whanganui's growth trend.

Its six-monthly Public Forums are an opportunity for the public to learn about Whanganui's economic position and the

work Whanganui & Partners does to support the local economy.

Jonathan Sykes, Whanganui & Partners' Chief Executive, said accountability and transparency were important principles for the agency. Public Forums allowed the community to engage kanoahi ki te kanoahi (face-to-face).

"We're proud of the work we do and having an opportunity to speak with the public is invaluable. These forums are for them, it's a chance to ask questions of us and to learn more about how our economy is doing and how we can continue to improve."

Sykes said Whanganui's success as a destination was a compelling story to explore.

Autumn and winter are

usually comparatively quiet periods for visitors but Whanganui has recorded remarkable growth, leaping ahead of the other 30 regions on the tables.

Whanganui & Partners tracks 'visitor spend' to measure the economic impacts of tourists in the region. Working with its data partner Marketview, the Economic Development Agency is able to record growth in visitor spending and compare it against other regions.

Marketview's data is the basis for the Ministry of Business, Innovation and Employment's (MBIE) monthly consumer spend figures. MBIE then ranks visitor spend growth in New Zealand's 31 Regional Tourism Organisations – and Whanganui has been

coming up tops.

Whanganui topped MBIE's visitor spend growth table in April, May, June, and ranked second in July.

Sykes, who was Whanganui & Partners' Strategic Lead of Marketing before being appointed CE, said the agency had been targeted in its use of central government funding boosts during the pandemic period.

"We put Whanganui on billboards, TV screens, in magazines, social media and newspapers and we saw the result of those efforts as we tracked significant increases in traffic to our website and online platforms. Our aim is always to raise Whanganui's profile as a place to visit, study, do business and live."

Sykes said the boost in visitor numbers and the momentum Whanganui was maintaining demonstrated how much visitors



enjoyed the region.

"The experience people have while they're here makes them more likely to return, speak highly of Whanganui to friends and family, and sometimes even consider moving to work or do business here."

Along with promoting Whanganui and its visitor industries, Whanganui

& Partners supports local businesses, the creative industries, agriculture and international education and capability building in the region.

Sykes said he was looking forward to talking about the impact of the agency's work across sectors.

"Along with our visitor success, we have a lot

of stories to share about businesses we've helped to establish, diversify and grow."

Whanganui & Partners' Public Forum is on November 2, beginning at 5.30, at Space Studio & Gallery on St Hill Street. All are welcome and can RSVP at discoverwhanganui.nz/forum.

New Rotary Book Exchange set up in Castlecliff



Rachel Stephenson with Kate Smith (Rotary's Book Fair Co-ordinator) and Linda Gibson (Book Fair volunteer).

Whanganui Rotary set up a free book exchange in the St Johns Hill Shopping Centre and, after its success, has set up a second one in Cross St, Castlecliff, next to Cliff Dental, thanks to the support of owner Hadleigh Reid.

The exchange was built by the Men's Shed and was painted in bright colours by local children, organised by Rachel Stephenson, who owns the Lady Bird shop in the group of shops opposite Te Kura Kaupapa Māori o Tupoho.

The book exchange has been stocked with books from the collection of books held by Whanganui Rotary in connection with their regular second-hand book sales. The plan is for people to take a book(s) and, if they have spare books of their own, to put those in the exchange. But that is not necessary, as Rotary members will be checking in to ensure that there is a good supply of books that appeal to a wide variety of people.

Whanganui is #1 for tourism growth – what's driving our success?

Join us at our Public Forum to hear from special guest David Perks, Chair of Regional Tourism New Zealand. We'll also update you on our work, and Whanganui's economic position.

2 November, 5.30-7pm

Space Studio & Gallery, 18 St Hill Street

RSVP at discoverwhanganui.nz/forum

REGISTER HERE



WHANGANUI & PARTNERS

FOR THE BEST HIRE EQUIPMENT IN TOWN

MARQUEES • MACHINERY HIRE
PARTY HIRE & SALES

HARRISON'S
HireMaster
WANGANUI

26 CHURTON STREET PH 345 7017



www.hiremasterwanganui.co.nz



HOLLANDAUTOMOTIVE
Drive with Confidence

FREE WOF

when you roll a double 1 with the dice at time of payment otherwise \$50



AUTOMOTIVE REPAIRS

SERVICING

TYRES

Phone 06 777 3052

141 London St, Whanganui

info@hollandauto.co.nz

www.hollandauto.co.nz



Find us on Facebook

ZIP afterpay



LEARNING • INTEGRITY • FELLOWSHIP • EXCELLENCE

WHANGANUI HIGH SCHOOL

www.whanganuihigh.school.nz

Tēnā koutou katoa

We have had an excellent series of Prizegivings and Awards evenings over the last two weeks and are looking forward to the final senior Year Level Prizegivings over the next few days.

NCEA and Scholarship examinations will be the primary focus of our Year 11 to Year 13 students over the remainder of the academic school year.

We extend our very best wishes to all examination students over the next few weeks. Prepare well and perform to the best of your own individual abilities.

Ngā mihi nui
Martin McAllen - Principal



NZCMA
ENTERTAINER OF
THE YEAR 2023
JUNIOR WINNER

Sophie Toyne

IMPORTANT DATES

Wednesday 25 October
Maori Awards

Friday 27 October
Pasifika Awards

Monday 30 October to
Friday 3 November
Year 10 students sitting NCEA
Numeracy & Literacy Assessments

Tuesday, 31 October
• Year 13 Breakfast
(8.00am, Eulogy Lounge,
Whanganui Racecourse)
• Year 13 Prizegiving
(7.00pm, School Hall)

Wednesday 1 November
• Year 12 Prizegiving
(1.30pm, School Hall)

Thursday 2 November
• Year 11 Prizegiving
(1.30pm, School Hall)

Monday 6 November
• Junior examinations
• NCEA & Scholarship
examinations begin

Thursday 16 November
Year 8 assessment and
testing (non WIS students)

Saturday 18 November
Year 8 Scholarships

Monday 20 November
Teacher only Day
- Changes to NCEA

Friday 1 December
NCEA and Scholarship
examinations finish

Friday 8 December
• Junior Prizegiving
• Last day of school for students

WHS TO SEE THE COMPLETE
ACHIEVERS LIST VISIT OUR WEBSITE:
www.whanganuihigh.school.nz



DAFFODIL FASHION GALA

In a busy year for senior fashion students, the Cancer Society Fundraiser, "Daffodil Fashion Gala" on August 4th, played a vital role in their Fashion Design assessment. Over 60 students from Whanganui High School, Whanganui Girls' College, and Nga Tawa showcased their redesigned Etcetera wedding dresses to support cancer initiatives through creative philanthropy. Local students graced the runway, showing the blend of design and compassion. Their dedication was impressive, highlighting the students' fantastic contributions. With 260 attendees, Whanganui Girls' College secured second and third places, while Whanganui High School's Vivian Tofa won first place with an elegant gown adorned with handmade fabric daffodils. The Cancer Society's first fashion show was a triumph, promising a repeat due to its remarkable success. This valuable experience gave students a taste of the excitement and challenges of the runway, nurturing their growth and anticipation for future creations. Looking back on a year of collaboration, we eagerly anticipate the innovations for the next Cancer Society Fashion event.

Mrs Fecteau, TIC Fashion Design



Vivian Tofa

1ST PLACE

WHS NATIONAL TARGET SHOOTING

Congratulations to Connor Baldwin-Holly (Year 9) for winning 1st Place in the National Target Shooting - TSNZ Challenge, Secondary Schools Postal Shooting Competition, Rested Grade.

WHS ROWING

Te Atakura Huiarere Potaka-Osborne Milner-Skudder (Year 10) may have the longest name in New Zealand Rowing but certainly knows the shortest way to get to the finish when undertaking 100 metres on the indoor rowing machine. Te Atakura recently secured the New Zealand Lightweight (under 61.5kg) Championship record in the 13-14 year female age group, covering the distance under the watchful eye of Aramoho Whanganui Club rowing director Axel Dickinson.

Te Atakura continues her rowing development with her crewmates from Whanganui High School at the Aramoho Whanganui Rowing Club and is enthusiastically looking forward to the forthcoming summer regatta season where her competitive attributes can be further challenged



INTERNATIONAL JUDO CHAMPIONSHIPS

A huge congratulations to Lucas Munn (Year 10) who won Gold representing New Zealand at the Queensland International Judo Championships in the cadets (under 18) under 90kgs bracket. Amazing achievement Lucas. Lucas is also representing New Zealand in Perth, Australia on 8th - 12th November competing in the Oceania Senior, Cadet and Junior Cup.

General Enquiries: (06) 349-0178 Attendance: (06) 349-0177 International Enquiries: +64-6-349-1181

Resurfacing of Whanganui Airport's runway taking place



Whanganui Airport runway

Work to resurface the runway at Whanganui Airport has started this week as part of ongoing development at the airport. The runway was last resurfaced with chip-seal in 2007, and regular maintenance work to seal surface cracks has occurred each year since 2017. The new asphalt surface will ensure the continuing operation of the airport for all users for the next 15 years.

Whanganui District Council's general

manager – community property and places, Sarah O'Hagan, says, "Whanganui Airport is an essential part of our local infrastructure. Regular daily flights for visitors and commuters are provided by Air Chathams between Whanganui and Auckland, and the airport is also the base for Air Whanganui's air ambulance (medevac) service, the New Zealand International Commercial Pilot Academy, Mid West Helicopters and

Ravensdown Aerowork, among others.

Overnight work by contractor Fulton Hogan to resurface the runway began on Tuesday night, 24 October, and is expected to be completed by the end of November. Each night, up to 50 truck movements will transport approximately 600-tonnes of asphalt to be laid over 130m of the 1.4km-long runway.

The council's capital works manager, Rosemary Fletcher, says, "Fulton Hogan will have about 50 personnel and 20 construction vehicles onsite each night during the work period to mill and reseal the runway surface in successive stages. The work will occur in five-day shifts from 6pm until 6am, Sunday evening through

to Friday morning.

"If you live on or visit Wikitoria Road, Airport Road, or any of the side roads in the area, please stay alert for heavy vehicle activity once the night works begin."

Whanganui Airport manager Phil McBride, says, "To ensure Air Chathams' flights are not affected by the work, the airport will close after the last passenger flight lands at 7.20pm and reopen the

following morning in time for the scheduled 6.45am flight to Auckland."

This project and the current upgrade of the airport's terminal building are being co-funded through the Whanganui

Airport Joint Venture between Whanganui District Council and Te Manatū Waka Ministry of Transport. For more information about these projects, please visit: www.whanganui.govt.nz/runway-project

Recent RCP winner

The winner of the draw for a double pass to the Hello Comedy Show featuring Tom Sainsbury was Caitlin Penny. Thanks to all those who entered the draw. We have two more draws to be announced this Friday, and there will be another draw to enter for the Tribute to Neil Diamond show coming soon.

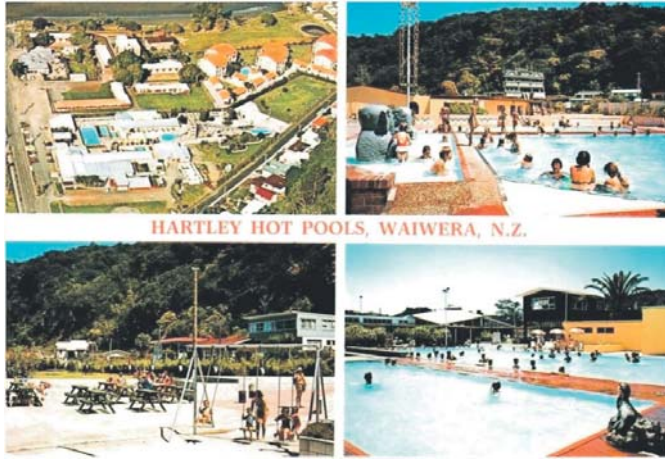
Remembering Waiwera hot pools in its heyday

Demolition of the Waiwera Hot Pools complex north of Auckland began in August, some time after the once very popular attraction was closed in 2018. Despite promises of a fresh start, even involving a Russian billionaire, nothing happened, and the complex had badly deteriorated.

Many readers will remember stopping to go to the hot pools and experiencing the range of attractions they offered. One local will remember them more than most, as Vicky Rhodes was part of the extended Hartley family who owned and ran the complex back in the 1980s.

Her father-in-law at the time, Andrew Hartley, was an entrepreneur, involved in a wide range of ventures. "He started off," explains Vicki "when he imported the first machine to trim gorse fences in New Zealand and after being very successful, he sold it and bought the Bretts Hotel in Rotorua."

His next ventures were to buy a farm in Waiheke and then the Helensville Ther-



HARTLEY HOT POOLS, WAIWERA, N.Z.

A postcard of Waiwera when it was owned by the Hartley family

mal Pool. It was a natural fit to then buy the Waiwera hot pools.

This was in the late 1970s. Vicki, who lived and worked there, describes the complex as follows:

"It had the highest hydro slide in the Southern Hemisphere and the largest games room in New Zealand with over 120 games. Apart from the public pools there were three private

party pools, saunas and BBQ areas. Andrew also owned the Waiwera hotel, a café with mini-golf as well as 12 houses for staff members. It was a seven-day-a-week operation and was known as the Hartley Hot Pools. At its peak it attracted 350,000 visitors a year."

Ever the entrepreneur, Andrew sold the complex in early 1987, moving into

running three video shops in Auckland before selling and buying a motel in Tamworth, Australia. He later returned to New Zealand to run a construction business.

Vicki and her husband, Andrew's son, had managed one of the video stores. Vicki returned to Whanganui and is currently a sales consultant for the RCP.



WANGANUI PLUMBING LTD

We are proud to support our community

Locally owned and operated and involved in all aspects of the trade for 51 years.

168 Somme Parade
Ph (06) 343 9763
www.whanganuiplumbing.co.nz



Are you curious about what AGC Training has to offer in 2024? Don't miss our Campus Open Events over the next 7 weeks! We're here to show you why we are the "Best Kept Secret in Whanganui/Okia."

- Agriculture Level 3 Dairy - 40 Weeks
- Carpentry Level 3 - 40 Weeks
- Animal Care Level 3 - 26 Weeks
- Rural Animal Technician Level 5 - 40 Weeks

First run of dates -

When: Thurs 2 Nov | Sat 13 Nov

Where: AGC Training Campus - 312 Number 3 Line, Okoia 4582

REGISTER HERE

0800 3488215
info@agctraining.co.nz
www.agctraining.co.nz

Campus Open Event #1



Guided Campus Tours

Interaction with our dedicated staff

Chauffeur-driven tours to our campus sites

- Main Office
- Carpentry Site
- Milking Shed
- Static Machinery Display
- Animals in the House Paddock
- + Sausage Sizzle and Farm-Fresh Milk Sampling



JOIN US FOR AGC TRAINING'S

OPEN DAYS



Diwali to be celebrated this Saturday at War Memorial Centre

Diwali is the Hindu festival of lights with its variations also celebrated in other Indian religions, including Jainism, Sikhism and Buddhism. It symbolises the spiritual "victory of light over darkness, good over evil, and knowledge over ignorance."

During the festival, celebrants illuminate their homes, temples and workspaces with

oil lamps, candles and lanterns. Diwali is also marked with fireworks and the decoration of floors with rangoli designs.

Food is a major focus, with families partaking in feasts and sharing mithai (sweets). The festival is an annual homecoming and bonding period not only for families, but also for communities and associations, particularly those

in urban areas, which will organise activities, events and gatherings. In Whanganui, thanks to the Lotus Women's Group, it will be celebrated on Saturday, 28 October, at the War Memorial Centre.

There will be a free vegetarian dinner along with sweets, from 5.30 to 6.30pm. Entertainment will follow with dancers coming from Auckland, Wellington

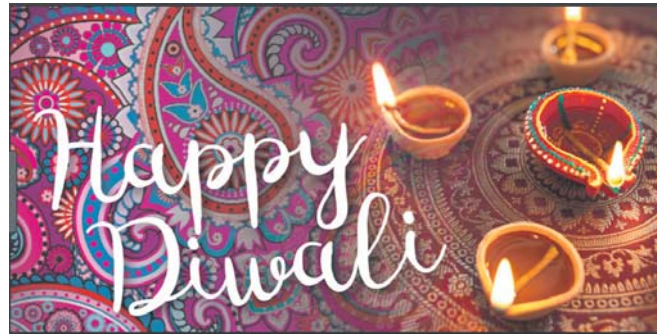
and Palmerston North as well as from Whanganui. As dance forms are very different in the different states of India, expect considerable variety as well as brilliant colours.

Geeta Singh from the Lotus Women says, "Come and be one of us. You are more than welcome to dress in Indian clothing, or if not, try a bindi," which is a coloured dot or, in modern times, a sticker

worn on the centre of the forehead." While a bindi is generally worn by

women, it can be worn by men. The evening is free

thanks to the Lotus Women, their supporters and sponsors.



Schools awarded funding to support sustainability projects

Horizons Regional Council has awarded 25 grants to Enviroschools with environmental and sustainability projects for 2023.

The Pat Kelly Enviroschools Action Fund supports sustainability projects from Enviroschools in the Horizons Region.

Horizons senior environmental educator and Enviroschools Regional Leader Sarah Williams says council received 31 applications, seeking a total of just over \$38,000 which is the most we have ever had since starting this fund in 2016.

"We were pleased to see a wide range of projects seeking support in this round of funding. Similar to last year, rainwater tanks and water conservation have continued to be popular projects, particularly with this year projected to be a dry summer with the El Nino.

"It has also been great to see a few more unique projects such as Brunswick Schools' lavender garden for making lavender oil, and Marton Child-



Kimbolton Early Learning Ruahine Kindergarten Association with their new water tank and pump funded from the Pat Kelly Fund in 2022.

care Centre's leafcutter bee project.

"Unfortunately, with only \$25,000 available some Enviroschools have missed out this time around".

The 2023 funding has been awarded to the following Whanganui Enviroschools:

- Brunswick School (Whanganui) – to create a lavender garden for oil production

- Westmere School (Whanganui) – to create signage for native trees in their nature walk

- Tawhero School (Whanganui) – towards māra kai/garden supplies

Photo returned to family

A local came to see us about two photographs that she had picked up in a jumble sale a long time ago. She hoped that someone might recognise the picture of a woman and baby despite the photos having been taken such a long time ago.

We published one of the two photos in our issue of September 14 and it didn't take too long to get a response.

It came from Rotorua. Deborah sent us a message to say "that people from all around Aotearoa" had phoned her aunt Kui or Cecilia, a daughter of our kuia, Aporonia, to ask whether the picture was of her mother and brother, Tony Pohe.

It was, and the RCP was pleased to be able to courier the two photographs to Deborah.

The Whanganui woman who had had these photographs was "delighted" to hear that the people in the photographs had been found and that the photographs were now in possession of the family.



THE SWEET CAROLINE TOUR
A TRIBUTE TO NEIL DIAMOND

STARRING **ZAC COOMBS**

SATURDAY 18 NOV
ROYAL WHANGANUI OPERA HOUSE

BOOK NOW! TICKETEK.CO.NZ ☆TICKETEK *Showtime*

VERY COMPETITIVE RATES

We offer

- Home Help
- Personal Care
- Sleepovers

General Home Help / Laundry/Meals
Shopping / House Cleaning / Driving
Companionship / Respite Care
Fulltime Care

"We'll give you the help that you need, and the care you deserve"



06 343 1711 or 021 045 2299
chrissycleanncare@xtra.co.nz

**1.99% + GST
commission, plus a free
marketing package.**

**Sell your home this
Spring with Sims.&CO**

**The answer is black and
white.**

Offer valid until 30/11/23, Terms & conditions apply

Jude Sims

M 021 624 456

E jude@simsandco.nz

Jeff Sims

M 027 441 4139

E jeff@simsandco.nz

PART OF THE ANDCO GROUP
ANDCO MEANS MORE

hello@simsandco.nz
www.simsandco.nz
facebook.com/simsandcorealty

Sims.&CO
ANDCO REALTY 16 LTD - LICENSED REAA 2008 **REALTY**

DAVID JONES MOTORS

www.davidjones.co.nz

DAVID JONES
MOTORS **38**
YEARS
Proudly Supporting The Community For

Spring **SALE** Spring **SALE**

2017 SUZUKI IGNIS

1.2L, HYBRID, auto, only 57,000kms, alloys, tints, weather shields, 60/40 split rear seats with isofix, great economy!



Was \$17,995 **NOW \$16,750**

2018 SUZUKI X BEE

1.0L, HYBRID auto, only 68,000kms, fog lights, alloys, Isofix, 360 degree camera, reverse sensors, push button start, 5.4L/100kms.



Was \$21,995 **NOW \$19,995**

2019 SUZUKI SWIFT RS

1.0L, turbo, petrol, auto, only 26,000kms, alloys, reverse camera, SatNav, Android Auto/Apple CarPlay, only 5.7L/100kms, turbo, 1 owner.



ON SALE **NOW \$21,995**

2021 HYUNDAI IONIQ 5

58kwh, fully EV, auto, only 45,000kms, 380km range, reverse camera, alloys, Apple CarPlay / Android Auto, wireless charging.



Was \$56,995 **NOW \$55,995**

2022 SUZUKI IGNIS GLX

1.2L, petrol auto, only 1,800kms, roof rails, only 5.4L/100kms, roof rails, Isofix, SatNav, reverse camera, cruise control, bluetooth, overdrive.



ON SALE **NOW \$21,995**

2021 NISSAN NOTE X

1.2L, HYBRID, auto, only 900kms, climate control, body kit, LED headlights, blind spot detectors, parking sensors, E-Power.



Was \$36,995 **NOW \$34,995**

2018 HYUNDAI KONA ELITE

2.0L, petrol, auto, only 48,000kms, keyless start/entry, alloys, wireless charging, reverse camera, bluetooth, heated leather seats, great colour.



Was \$27,995 **NOW \$26,995**

2006 HONDA CIVIC S

1.8L, petrol, manual, only 109,000kms, alloys, towbar, cruise control, 7.7L/100kms, sporty, reliable, fun & safe, great buying!



ON SALE **NOW \$8,995**

2019 SUZUKI VITARA TURBO

1.4L, turbo petrol, auto, only 52,000kms, two tone, Safari Edition, black alloys, body kit, parking sensors, Isofix, reverse camera, SatNav.



Was \$26,995 **NOW \$25,750**

2014 HYUNDAI SANTA FE ELITE

2.2L, turbo diesel, auto, only 156,000kms, alloys, AWD, bluetooth, cruise control, heated leather seats, 7 seater, keyless entry/start.



ON SALE **NOW \$22,995**

2014 HYUNDAI IX35 GDI

2.0L petrol, auto, only 141,000kms, reverse camera, alloys, high seating, Isofix, cruise control, fog lights, roof rails, leather.



ON SALE **NOW \$16,995**

2018 JEEP COMPASS

2.4L, petrol, auto, only 34,000kms, alloys, tiptronic, tinted windows, fog lights, keyless entry, 5 star safety, stunning, luxurious & loaded SUV.



Was \$29,995 **NOW \$27,995**

2022 NISSAN X-TRAIL TI-L

2.5L, petrol, CVT auto, only 3,200kms, 360 deg. camera, safety package, adaptive cruise control, top spec, demonstrator.



Was \$59,995 **NOW \$54,995**

2022 MAZDA CX-3 GSX

2.0L, petrol, auto, only 19,000kms, alloys, reverse camera, daytime running lights, leather, Isofix, SatNav, adaptive cruise control, like new!



ON SALE **NOW \$32,995**

2021 MITSUBISHI OUTLANDER LS

2.4L, petrol, CVT auto, only 41,000kms, alloys, parking sensors, 7 seater, keyless entry/start, Isofix, reverse camera, large boot, great family SUV.



ON SALE **NOW \$28,995**

2019 SSANGYONG REXTON G4 SPR

2.2L, turbo diesel, auto, 4WD, only 74,000kms, black 20" alloys, 7 seater, leather, reverse camera, apple carplay / android auto, towbar.



ON SALE **NOW \$39,995**

2023 FORD RANGER XLT

2.0L, Bi turbo diesel, 10 speed auto, 2WD, only 3,600kms, hardlid, towbar, alloys, 10.1" touch screen, reverse camera, keyless entry/start.



ON SALE **NOW \$56,995**

2019 FORD RANGER XLT

3.2L, turbo diesel, auto, only 51,000kms, 4x4, bullbar, side steps, towbar, snorkel, seat covers, reverse camera, parking sensors, A/T tyres.



ON SALE **NOW \$45,995**

2020 MITSUBISHI TRITON GLX-R

2.4L, turbo diesel, 6 speed manual, 20" wheels only 10,000kms, black out package, towbar, tonneau cover, sportsbar, reverse camera.



Was \$41,995 **NOW \$39,995**

2012 TOYOTA HILUX

3.0L, turbo diesel, 5 speed manual, 231,000kms, nudgebar, alloys, towbar, large cargo tray, mud flaps, tie down points, trusty & reliable!



ON SALE **NOW \$18,995**

**You buy.
We pay!**



For a limited time, when you buy a new Suzuki Swift Sport, Vitara Turbo or S-Cross, we'll pay the Clean Car fee! Plus, with No Deposit 6.9% p.a. Finance it's even easier to drive away today in a new Suzuki. So, what are you waiting for? It's time to clean up with this special deal, available now.



CLEAN CAR TAX
WE PAY, YOU DON'T



Nissan will pay the clean car fee applicable to any new ST, ST-X or PRO-4X models. Valid until the 31st October 2023.

ENDING SOON!
DON'T MISS OUT!



Secure Your New Mitsubishi PHEV before the \$4,025 Clean Car Discount Ends.



276 & 330 Victoria Avenue, Wanganui. Phone 06 345 5115



David Jones Motors



Whanganui councillors vote to establish Māori wards

Whanganui District Council has resolved to establish Māori wards for the 2025 and 2028 local government elections. The decision was made following a vote by councillors on 24 October.

Mayor Andrew Tripe says this marks a huge milestone for the Whanganui District Council.

"The aim of Māori wards is to provide an opportunity for Māori to be fairly represented on the council. I hope the introduction of

Māori wards will increase participation in our democracy and encourage Māori to share their views and aspirations. It will further help our elected members to consider these perspectives when making local government decisions.

"Māori wards do not replace the strong existing relationships the council has with Hapū, Iwi, Mana Whenua, Tangata Whenua, Māori individuals and Whānau, and our obligation to consult with these groups

and individuals will not change with the decision to establish Māori wards. Instead, they can act as an additional mechanism within the council's decision-making process."

The decision took place in the council chambers with each councillor sharing their view. A final vote resulted in eight councillors voting for Māori wards and five voting against establishing Māori wards. Mayor Andrew says that the majority of votes against were due

to the view that the electoral legislation is flawed, which most councillors agreed with. A number of councillors agreed to lobby central government to seek change in legislation.

A community consultation on the topic was held from 5 August to 8 September 2023. A small majority from the survey results supported the establishment of Māori wards. Twenty Hapū, thirteen Marae, two Iwi, and two Rūnanga were also contacted and invited

to share their views. The council received formal letters of support from the two Iwi, and from Te Rūnanga o Tamaupoko who represent five Hapū from the middle section of the Whanganui river to Mount Ruapehu. Four other Hapū also confirmed their support.

The decision whether or not to have Māori wards was up for review due to a recent change in government legislation that asks councils that do not have Māori wards to decide

whether to have specific Māori representation.

The establishment of Māori wards will feed into the upcoming representation review, which addresses how representation is arranged at the council. This review will look at the number of councillors, structure and naming of wards and whether community boards should be retained.

The council will likely have two Māori wards, based on a pre-set calculation by the Local Electoral

Act which looks at the number of Māori and general electoral population in the city, relative to the number of councillors.

Electors enrolled on the Māori electoral roll will vote for Māori ward candidates, and electors on the general electoral roll will vote for general ward candidates. All electors vote for the Mayor.

Whanganui is the last council in the Manawatu-Whanganui region to establish Māori wards.



Northern Classic Commercial Truck Run NOVEMBER 11/12



The Northern Classic Commercial Truck Run coming to Whanganui November 11/12



The Northern Classic Commercial Truck Club was set up in 2006, covering the North Island. Every four years, they hold a North Island run, attracting 90 to 100 people in their trucks, including 20 from the South Island. The last was in the Coromandel.

In between times, they like to organise about three to four more local runs each year, and the one on November 12 is focused on Whanganui.

Organiser Graeme Skou of Marton's G. K Skou Transport says he is expecting about 20 to 30 trucks with about 40 to 60 people, as each truck normally has two people travelling in it.

The Truck Run starts on Saturday, November 11, at the Coachman's Museum in Fielding at 8am for breakfast and a look over the Museum, which costs \$10 to visit. The group will then visit Central House Movers Depot before heading off to

Bulls to check out the 'House Farm' on the main road. As Graeme says, "We try to visit places of interest to big commercial truck drivers."

Then it is on to Marton to visit Rangitikei Machinery and Diesel, which is a large company working in logging and quarrying, complete with huge bulldozers and loaders, as well as a good range of vintage machinery.

After taking a diversion via the Turakina Valley, the trucks will arrive at Caroline's Boat Shed on Somme Parade for dinner.

They will be back at 8.30am for breakfast before heading off to Clive and Nikki Higgie's Paloma Gardens in Fordell, also home to their classic motorcycle gallery.

The trucks will go back via Turakina to Hunterville before arriving at Flat Hills for lunch and then back to where they came from.

Any enquiries about the run can be directed to Fiona Reid on 021 901336.



WHANGANUI
CONCRETE
PUMPING

Specialising in

- Boom Pumping
- Line Pumping
- Shotcrete

WHANGANUI
MANAWATŪ
TARANAKI

Contact Pat
0210 844 3000
pat@concretepumping.nz
www.concretepumping.nz



McCarthy TRANSPORT



Proudly supporting the Classic Truck Run

www.mccarthytransport.co.nz

McCarthy Transport, 88 Gilberd Street, Wanganui

Ph: 06 344 1620 | Email: wanganui@mccarthytransport.co.nz

FOR ALL YOUR LOG CARTAGE NEEDS

"PROUD PEOPLE, LOYAL SERVICE"

Northern Classic Commerical Truck Run

NOVEMBER 11/12



Organiser's - Marton GK Skou Transport

Graeme Skou has run Marton's G K Skou Transport for 36 years. They have a fleet of 12 trucks and are about to pick up their 13th. Graeme says, "We prefer Volvo and Hinau."

The main part of the business is transporting livestock and to AFFCO Whanganui, coming here three to four times a week.

His favourite truck is his 1977 Kenworth W924,

which is now a 'vintage' truck but with a 600HP engine. On these runs, he is not towing anything and so is able to do 3.8km to a litre of diesel.

While the bulk of the trucks on the run will be big ones, especially Chevies, there will also be utes of all shapes, sizes and ages. The idea is to come and enjoy.

He says, "Our drivers are our front people. A good driver is one who also does good book-work and is good with people."

View the trucks at Caroline's Boatshed

After taking a diversion via the Turakina Valley, the trucks will arrive at Caroline's Boat Shed on Somme Parade for dinner on November 11.

They will be back at 8.30am for breakfast, November 12



Graeme Skou with Caroline, owner of The Boatshed Bar and Eatery, Somme Parade.

**BALGOWNIE
CRANES LTD**

Proud to support the
Classic Truck
Run

**PHONE 344 6774 or call
RENEE 021 143 0321**

Caroline's
BOATSHED
bar and eatery

Northern Classic Truck Run Breakfast Sunday 12th November, 8am

*Come and view all the trucks and
enjoy some delicious food afterwards!*

181 Somme Parade, Wanganui | Phone 06 281 3377

Caroline's Boatshed Bar

Downer

Proudly to
support the
Northern
Classic
Truck Run

**EMMETTS
TRUCK SERVICES**

TRP DAF KENWORTH
IVECO UD UD TRUCKS VOLVO

Ph 06 344 5055
357 Heads Road
Wanganui 4501

24 Hr Specialist Truck & Machinery Repairs & Parts



Northern Classic Commerical Truck Run

NOVEMBER 11/12



SHARP AS!

LINEHAUL LIMITED

WANGANUI, NEW ZEALAND

*Transport solutions
that help take your business to the next level*

- **Bulk Cartage**
- **Refrigeration**
- **Container Transport**
- **General Cartage**
- **Domestic Water Supplies**

TARTEK

CIVIL CONSTRUCTION AND DRIVEWAY SPECIALISTS
1996

- Hotmix ▪ Chip Seal ▪ Concrete Work ▪ Potholes
- Section Clearing ▪ Horse Arenas ▪ Carparks
- Council Approved Entrance Way Installer
- Subdivision Development ▪ House Pads
- Traffic Management



FREE QUOTES (06) 347 9657

Email: office@tartek.co.nz | www.tartek.co.nz

GRANGE

TRANSPORT LTD



For all livestock, wool, fertiliser, metal,
grain bulk cartage

Bulk Storage - Builders Mix & Shellrock
Servicing Wanganui, Raetihi, Taranaki

Brendon Molan - Ph 06 345 8661

F: 06 345 8770 M: 027 276 4127

E: grange.trans@xtra.co.nz

State Highway 3, Westmere, Wanganui



TRANSPORTING NZ WIDE.

www.sharpas.co.nz



PINK RIBBON STREET APPEAL

This Friday & Saturday, October 27 & 28

or donate online at

www.breastcancerfoundation.org.nz/campaign/street-appeal23

Breast Cancer Foundation NZ

Region's mayors call on locals to support the Pink Ribbon St Appeal

Breast Cancer Foundation NZ is delighted to have the backing of the Ruapehu, Whanganui and Rangitikei mayors, who are encouraging lo-

cal to donate to the charity's Pink Ribbon Street Appeal next week.

On Friday, 27, and Saturday, 28 October, 10,000 volunteers will be hitting

the streets all over New Zealand to raise vital funds for breast cancer research, education and patient support.

Ruapehu Mayor Weston Kirton says: "As a nation, we today collectively unite to support those effected by breast cancer. Our thoughts reach out to those who are survivors, and we also remember those who lost the battle. What we strive for as a community is public awareness through fundraising.

"Generous donors can make a positive difference in both the wellbeing of sufferers and scientific research. Thank you in advance for your financial and moral support."

Whanganui Mayor Andrew Tripe says: "It is likely that you know someone who has been diagnosed or lost their life to breast cancer. I have my own connections and many others I speak to do as well. The reality is that with early detection,

breast cancer (and other cancers) can be caught early, meaning a greater chance of full recovery and an improved outcome in general."

Rangitikei Mayor Andy Watson says: "Publicity is the key, breast cancer is survivable and if I can help with the message I can help save lives. Why would I not be part of that?"

Breast Cancer Foundation NZ's chief executive, Ah-Leen Rayner, says: "We're asking everyone in Whanganui to show some love for Kiwis affected by breast cancer by donating to our Pink Ribbon Street Appeal, and we're so grateful to have Mayors Kirton, Tripe and Watson join our call.

"As a charity that doesn't receive any government funding, it's only thanks to the generosity of New Zealanders that we can carry out our life-saving work. Your donations will bring us closer to our vision of zero deaths from breast cancer."

Every year, around 55 women are diagnosed with breast cancer in the



Whanganui region. All of the money raised from the Pink Ribbon Street Appeal goes towards Breast Cancer Foundation NZ's work to advance breast cancer research, educate Kiwis about the importance of early detection, and support patients through their treatment and recovery.

Donations can be made

to the Pink Ribbon Street Appeal through volunteer collectors who will be out in force shaking pink buckets across the region on 27 and 28 October or online at bcf.org.nz/streetappeal23

PKF
Doyle & Associates
The Accountants

WHANGANUI - OHAKUNE - TURANGI



Proud to support the
**Pink Ribbon
Street Appeal**

www.pkfdoyles.co.nz



Physiotherapy Hand Clinic

IN GOOD HANDS

Juliet Brodie

NZ REG. PHYSIO AND HAND THERAPIST

Proud to support the
Pink Ribbon Street Appeal

We specialise in the treatment of elbow, wrist & hand injuries & conditions.

p. 06 345 1198 • 18A Bell Street, Wanganui

GB
Guthrie Bowron

Paints
Wallpapers
Curtains &
Blinds

Pleased to support the
Pink Ribbon Street Appeal

42 Wilson Street, Wanganui
Ph 06 345 8193



BELVERDALE HOSPITAL LTD

WE OFFER SPECIALIST SERVICES IN
GENERAL, ORTHOPAEDIC, E.N.T,
ENDOSCOPIC & LAPAROSCOPIC
SURGERY, & WEIGHT
LOSS SURGERY

5 Campbell Street, Wanganui.
Ph 348 1182, Fax 348 1183

Trafalgar Square trading hours:

Countdown: 7.00am until 10.00pm 7 days
Specialty Stores: 9.00am - 5.30pm Mon to Fri
The Warehouse: 8.00am until 9.00pm 7 days
9.00am - 4.00pm Saturday
10.00am - 4.00pm Sunday



We are proud to support the
**Pink Ribbon
Street Appeal**

Individual store hours may vary, if you are visiting a specific store we recommend you call or visit their website or social channels beforehand.

Angel Touch	Hair 021 144 9558 Nails 021 210 3349	Kiwiana Café	(06) 345 2590	Technofix	(06) 345 0729
A Taste of Indian Castle Eatery	(06) 345 0863	Millers	(06) 345 3965	The 123 Mart	(06) 345 2122
Awa Gifts - Māori Shop	(06) 348 4994	Mister Minit	(06) 345 0484	The Treat Zone	(06) 348 8103
Bloody Burgers	(06) 213 0799	Number 1 Shoes/Hannahs	(06) 348 8495	The Warehouse / Warehouse Stationery	(06) 348 0171
Carpet Court	(06) 777 3028	O & Bowl	(06) 213 4284	Trafalgar Lotto	(06) 348 8291
Countdown	(06) 349 0199	Ocggi Sushi	(06) 213 4282	World Travellers	(06) 348 8190
EB Games	(06) 348 9242	Paper Plus / NZ Post	(06) 348 0351		
Just Cuts	(06) 348 0466	Roasties Carvery	(06) 345 2590		
		Tank Juice	(06) 262 7009		

www.trafalgarsquare.co.nz

Trafalgar Square Shopping Centre | 100 Taupo Quay, Whanganui | Ph 06 348 0314



GEMINI PEPPER
CONSTRUCTION



Proud to support the
Pink Ribbon Street Appeal

**RESIDENTIAL /
COMMERCIAL
EARTHQUAKE
STRENGTHENING**

Cnr Hinau and Rogers Streets,
PO Box 489, Wanganui
Phone 06 344 5087
Mobile 027 438 4211
Email: office@gempep.co.nz



PINK RIBBON STREET APPEAL

This Friday & Saturday, October 27 & 28

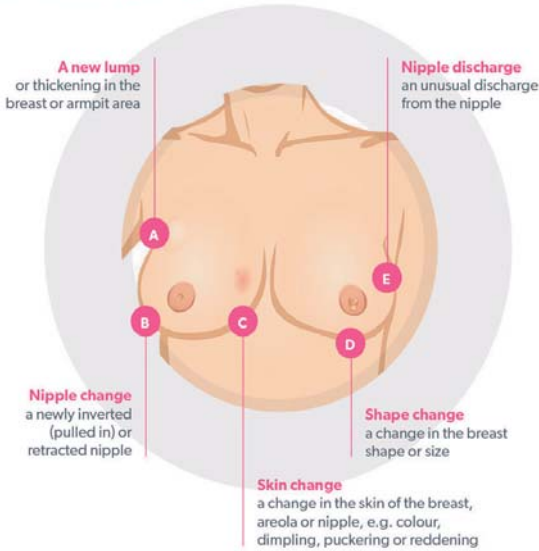
or donate online at

www.breastcancerfoundation.org.nz/campaign/street-appeal23

Breast Cancer Foundation NZ

NZ breast cancer statistics show nine women a day diagnosed

Be Breast Aware



If you notice any new or unusual changes, show your doctor



For advice call our breast nurse, freephone 0800 BC NURSE (0800 226 8773) or visit www.breastcancerfoundation.org.nz



Are you aged between 45 and 69? Enrol for free mammograms 0800 270 200 or register online at www.timetoscreen.nz

Breast cancer is the most common cancer for Kiwi women and the third most common cancer overall.

More than 3,300 women across the country are diagnosed with breast cancer every year (that's 9 women a day). One Māori woman a day will be diagnosed. Twenty-five men are diagnosed each year too.

We still lose more than 650 Kiwi women a year to breast cancer.

Breast cancer in younger women is less common, but it does tend to be more aggressive. Out of the 3,300 women in NZ diagnosed every year, 11% (350) of them will be under 45.

Wāhine Māori are 35% more likely to be diagnosed with breast cancer and 65% more likely to die. Yet when cancers are found on a mammogram, Māori 10-year survival is the same as Pākehā (92%).

The 10-year survival rate, if breast cancer is detected by mammogram is 92%, but this falls to 75% if a woman finds a lump.

Breast cancer is most treatable when it's found early. Women should be breast aware from age 20, which means you need to know the normal look and feel of your breasts, so you can tell your doctor if there are any changes.

Breast Cancer Foundation NZ recommends considering annual mam-

mograms from 40-49, then every two years from 50. Free mammograms through Breast-Screen Aotearoa are available when you're 45-69, and the Government has committed to extending the age to 74. Credit: www.breastcancerfoundation.org.nz

Flair 4 Hair



Pleased to support the Pink Ribbon Street Appeal

Telephone 344 4025

42B Fitzherbert Ave, Wanganui



P.E.R.T.H. CONCRETE

Proudly supporting the Pink Ribbon Street Appeal

Ph 06 347 7717
info@perthconcrete.co.nz
1B Airport Road, Whanganui

Pure Breast Care® NZ



High-quality post-surgery mastectomy bras, swimwear and Prostheses.

- Ministry of Health approved provider
- Liz is in your area monthly: Manawatu-Whanganui, Wairarapa Horowhenua, Wellington, Hawkes Bay

Fitting at Cancer Society Rooms or Home Visits

Liz can give you the individual, personal and private attention you need.



Pure Breast Care® NZ



0800 259 061
021 848 646

Liz@purebreastcare.com

www.purebreastcare.com

Checked your breasts lately? It's as easy as TLC

Touch. Touch both breasts. You're feeling for any lumps or thickening in the breast even up to the collarbone and into the armpits.

Look. Look in a mirror. Raise your arms above your head. Does this change the appearance of your breasts or nipples?

Check. Check with your doctor. Check any breast changes with your doctor, even if you've had a mammogram recently.

Go to www.anychanges.co.nz and watch our step-by-step guide.

xile
HAIR BY DESIGN

69
TAUPO QUAY
WANGANUI

PHONE
06 345 0401

Proud to support the Pink Ribbon Street Appeal

We offer an extensive range of hair styling services with a stunning outlook onto the Whanganui river.

Jackson's Flooring Design

Service and Excellence You Can Trust!

Pleased to support the Pink Ribbon Street Appeal

Corner of Wilson & Ridgway Streets
P 06 345 9059 • whanganui@flooringdesign.co.nz



Thank you Whanganui & Rangitīkei!



Your support means we have helped Whanganui & Rangitīkei locals save thousands of dollars in real estate fees over the past two and a half years, and we couldn't have done it without you!

By working with us, you have allowed us to build our services within this city, and now we have an incredible team of 12 dedicated salespeople, backed with experienced local support.

We deliver the full package, with complimentary marketing and a fairer fee of 2% + GST (min \$10k + GST).



Felicity Temple
027 483 6753



Rochelle Burton
027 295 8407



Talia Annear
027 413 9337



John Hewitt
020 4086 0204
Rangitikei



Tony Hewitt
027 449 2289
Rangitikei



Penny Little
021 216 6784



Mark Voss
027 877 3399



Mark Morton
022 353 9419



Bren Guild
021 022 06668



Matt Robertson
021 886 815



Steven Schwamm
021 176 7845
AREINZ



Jared Smith
027 491 4321



Is this you?
Contact Steven

ratemyagent

Top 100 ★★★★★
Agency of the Year

#2 Place
Nationwide 2023
Arizto Real Estate



Local candidate votes won per polling booth

Candidates standing in the Whanganui Electorate: (NZF) New Zealand First Party – William ARNOLD; (NAT) National Party – Carl BATES; (ACT) Act Party – Craig DREDGE; (AJ) Animal Justice Party – Sandra KYLE; (LAB) Labour Party – Steph LEWIS; (GRNS) Green Party – Marion SANSON

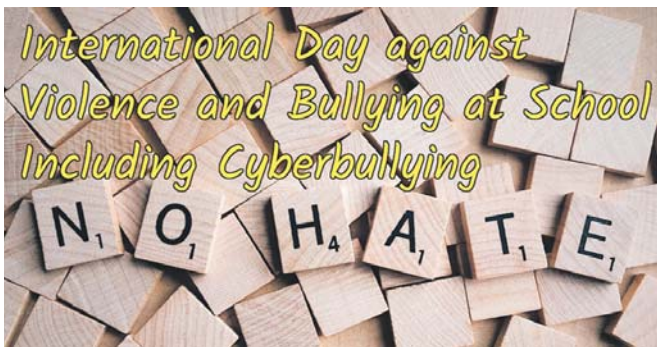
(2023 General Election, Preliminary Results)

	NZF	NAT	ACT	AJ	LAB	GRNS	Total valid candidate votes
ADVANCE VOTING PLACES							
Aramoho Aramoho School Hall	49	230	30	5	322	36	672
Gonville Baden Powell Scout Hall	165	583	43	16	817	79	1703
Springvale Jubilee Stadium	139	1338	69	15	780	92	2433
Whanganui Hospitals and Care Homes - North, Team 2	12	68	2	1	47	3	133
Whanganui Hospitals and Care Homes Team, Team 1	17	55	2	4	105	6	189
Tawhero Whanganui Cook Island Community Hall	81	256	23	8	447	43	858
Whanganui St Andrew's Presbyterian Church	89	636	45	12	527	71	1380
Whanganui St Mary's Church Hall	126	1372	55	18	1069	107	2747
Whanganui East Hakeke Street Community Centre	104	572	42	10	598	69	1395
VOTING PLACES							
Aberfeldy Aberfeldy School	0	12	0	0	2	0	14
Aramoho Aramoho School Hall	18	73	7	4	101	16	219
Aramoho Churton School	25	105	14	3	102	20	269
Brunswick Brunswick Hall	12	127	11	0	23	4	177
Castlecliff Aranui School	14	67	9	1	90	19	200
Castlecliff Castlecliff School	44	98	13	7	182	21	365
Castlecliff Te Kura Kaupapa Māori o Tupoho	11	11	1	0	26	6	55
Durie Hill Durie Hill School	30	212	11	6	162	34	455
Fordell Fordell Community Hall	13	127	10	0	27	5	182
Gonville Baden Powell Scout Hall	59	102	10	5	163	26	365
Gonville St Peter's Parish Hall	31	116	9	6	99	13	274
Kai Iwi Kai Iwi Community Hall	12	96	8	0	29	6	151
Kaitoke Kaitoke School	9	79	10	1	30	6	135
Putiki Te Kura Kaupapa Māori o Te Atihaunui-A-Pāpārangī	11	53	4	0	41	4	113
Ranana Te Kura o Wainui-ā-Rua	0	0	0	0	11	0	11
Springvale Faith City Church	40	258	15	3	122	14	452
Springvale Jubilee Stadium	32	212	19	8	206	37	514
St Johns Hill St Johns Hill School	26	381	22	5	169	26	629
Tawhero Tawhero School	26	89	6	4	93	16	234
Tawhero Whanganui Cook Island Community Hall	24	44	2	4	102	14	190
Upokongaro Upokongaro School	6	69	7	1	36	12	131
Waverley Waverley Primary School	43	201	21	3	102	12	382
Westmere Mosston School	16	135	11	0	76	23	261
Westmere Westmere School	26	283	16	2	82	9	418
Whanganui Carlton School	30	129	8	2	155	24	348
Whanganui Cullinane College	21	97	9	3	92	15	237
Whanganui Keith Street School	24	85	8	5	159	20	301
Whanganui Rangahaua Marae Wharekai, Tupoho Complex	7	19	0	0	26	1	53
Whanganui St Andrew's Presbyterian Church	39	133	7	2	118	18	317
Whanganui St Mary's Church Hall	24	130	10	5	120	21	310
Whanganui Whanganui City College	18	140	4	3	99	15	279
Whanganui East Hakeke Street Community Centre	16	38	6	2	73	7	142
Whanganui East St Anne's Catholic School	11	138	11	1	100	18	279
Whanganui East Whanganui East School	33	116	14	3	161	22	349
Whanganui East Whanganui Girls' College	47	187	7	2	177	36	456



International day against violence and bullying at school including cyberbullying.

Rates of bullying in schools is high compared with other countries



The International Day Against Violence and Bullying at School, including Cyberbullying is celebrated every year on the first Thursday of November – which for 2023 is Thursday 2 November.

Bullying happens at every school. It takes many forms — physical, verbal and social — and it can happen in person, online and even via text message.

Studies show children and young people who are bullied are more likely to be depressed, lonely or anxious; to have low self-esteem and to struggle academically; dislike school and miss classes; distrust peers and have problems making friends; and experience declined mental and emotional health.

The Youth 2000 surveys, carried out in 2001, 2007, 2012 and 2019 by the Adolescent Health Research Group at Auckland University, have found little change in rates of bullying in New Zealand schools over the past decade, with the exception of cyberbullying, which is on the rise.

International reports show rates of bullying in New Zealand schools are high compared with many other countries and have been raising since the last PISA study 2015.

The website <https://bullyingfree.nz/> has some important recommendations about bullying prevention strategies as follows:

Bullying prevention strategies are most effective when they are integrated into a broad range of activities that promote a positive, inclusive learning environment. Strong

leadership and staff who model these positive values and behaviours are essential. In a whole-school approach, bullying prevention is everyone's business, involving all staff, students, boards, parents and the wider community and making sure everyone knows and supports their school's strategies and approach to bullying.

The key elements of an effective bullying prevention approach include:

1. Bullying prevention that is a permanent part of the school environment, not a temporary remedial programme.
2. Strategies and practices that are comprehensive and embedded, not fragmented or 'added-on'.
3. Information on the nature and dynamics of bullying that is easy to understand for the whole-school community, who all respond effectively when they see or experience bullying.
4. Bullying prevention material needs to be provided in multiple ways (e.g., curriculum, policies, parent infor-

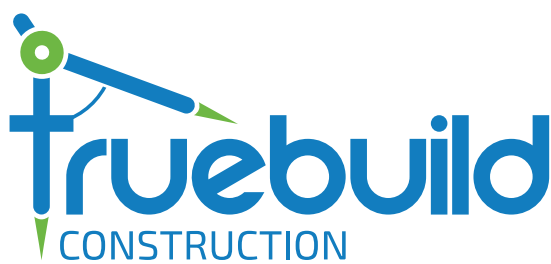
mation) and co-ordinate with other existing programmes.

5. Approaches that have a positive effect on students and on the school climate and go beyond the problem of bullying.

Bullying prevention — What doesn't work?

There are common and avoidable misdirections in bullying prevention, including:

- Zero tolerance and disciplinary measures (i.e., school suspensions and expulsions)
- Expecting students to solve bullying problems by themselves
- Telling students to avoid social media as a way of avoiding cyberbullying
- Providing one-off activities (i.e., one-shot assemblies or a short motivational speech)
- Pulling a few bits and pieces from a programme, or small, piecemeal and uncoordinated approaches
- Dealing with individual students who are bullying or being bullied – everyone needs to be involved in bullying prevention.



OUR REPUTATION IS BUILDING

Kitchen and Bathroom Renovation Specialists



- New homes
- Renovations
- Extensions
- Decks & Fences
- Repairs
- Maintenance
- Sheds & Kitsets

Mobile: 022 2047 627

Website: www.truebuild.co.nz



LICENSED BUILDING PRACTITIONERS Building confidence



WOMEN'S REFUGE

Honouring women, children and whānau to live a life of dignity, integrity and encouragement towards positive change

Ph 06 344 2204

Email: advocate@refugewhanganui.org.nz
40 Ingestre Street, Whanganui



Trunk or Treat at the Bason Botanic Gardens for Halloween

Trunk or Treat is a safe family-friendly way to trick or treat on Halloween. It will be happening on Tuesday, 31 October, from 6pm to 7.30pm at the Bason Botanic Gardens on the road to Mow-

hanau Beach. It will be held on the BBQ lawn, working as follows:

- Come 6pm, park your car around the edges of the lawn as part of a large circle, with your trunk (boot) facing towards the lawn.

There will be someone directing traffic, especially if there is a need to create internal parking spaces.

- Each family must decorate their trunk and bring treats for the other participants (candy, fruit,

stickers, balloons, etc). For ideas, google 'trunk or treats.'

- Trunk or Treating will start from 6.30pm, and kids can visit the trunk of each car for a treat.

- Pack up around 7.30pm

and leave by 8pm. (The gates close at 8pm)

A gold coin donation per family is appreciated and will be donated to the Kaitoke School New Bus Fund. Look out for the collection jar or use the Givealittle page link - <https://givealittle.co.nz/cause/kaitoke-school>.

The organisers ask you to remember that you are

responsible for any children in your care. There is water nearby and moving cars, so please supervise your children. They also ask drivers to drive slowly and watch out for children.

As there is likely to be a lot of rubbish, they also appeal for everyone to take any rubbish home with them.

For those planning to go trick or treating around Whanganui, there is a 'Halloween Friendly Houses Whanganui 2023' Facebook page. Last year, up to 40 houses were decorated especially for Halloween, and organisers expect a similar number this year.

FINISH THE YEAR STRONG!

Kip McGrath
EDUCATION CENTRES



Boost your child's success, self esteem and confidence in English and maths with a personalised learning programme

At Kip McGrath, our focus is to help your child reach their full potential.

We make learning fun and engaging to improve results. You will receive progress reports and updates to track your child's improvement.

English and Maths Tuition In Centre Online

Book a free assessment today

Suite 1, 236 Victoria Avenue, Whanganui
Phone 06 348 0035 • www.kipmcgrath.co.nz



21A Carlton Ave., which is normally decorated for Halloween.

Lunchtime organ concert next Wednesday

Iain Tetley has established himself in the musical life of the city of Whanganui since moving here from Pukekohe in 2018. He has been the conductor of the local choir Schola Sacra since 2019 and of the Whanganui Collegiate School Chapel Choir since 2021.

His performances include:

- Conducting the Mozart Requiem with Schola Sacra and full orchestra in Big School at Whanganui Collegiate in 2020,

- Combining three local choirs and Brass Whanganui to conduct The Armed Man: A Mass for Peace on Anzac Day 2021,
- Conducting a very successful concert of Coronation music with Schola Sacra in July this year and

- in August, taking the Collegiate Chapel Choir to sing an Evensong service in Wellington Cathedral.

He also sings as a tenor soloist in concerts around the country, from Auckland to Dunedin. His most recent large-scale venture was singing as the Evangelist in a performance of the

Bach St Matthew Passion with Auckland Choral, and also as the Evangelist in Bach's Christmas Oratorio with Auckland specialist choir Bach Musica in December, both occasions in the Auckland Town Hall.

He was also seen by enthusiastic audiences of Amdram Whanganui's production of The Phantom of the Opera in March this year, playing the role of the Phantom, an experience he very much enjoyed.

On the first day of next month, he will be turning his attention towards

performing on the organ, playing a short lunchtime organ recital at Christ Church, 243 Wicksteed Street.

This is the final recital for 2023 of an ongoing series of monthly half-hour concerts, raising funds for the organ's maintenance to keep it in good repair, to support its use by as many people as possible as a community instrument, and to ensure its future. The concert starts at 12.15pm on Wednesday, 1 November. Entry is by koha, and all music enthusiasts are welcome.



Organist Iain Tetley

Be Your Own Boss workshop for entrepreneurs

An exciting collaboration between The J R McKenzie Trust and Thrive Whanganui is set to ignite entrepreneurial dreams in Whanganui with the two-day start-up workshop, "Be Your Own Boss - Whakaterera Te Moemoeā," scheduled for November 25 and 26, 2023, at Te Manu Atatū - Whanganui Maori Business Network, 12/14 Drews Avenue.

Participants in this inspiring wānanga will embark on a transformative journey where they will discover how to research their business idea, strengthening it beyond theory and into actionable plans. Practical research skills will be shared to directly benefit participants' business ideas.

Participants will also gain access to valuable tools and resources, including helpful worksheets and information for continued progress. "As we always say at Thrive: Knowledge is the key to unlocking your potential," emphasises Elise Goodge, the Programme and

Partnerships Lead for Thrive Whanganui.

This event seeks to create a supportive environment where entrepreneurs can explore their aspirations, feel connected, and take decisive steps toward realising their business dreams. This workshop is open to all. We particularly encourage indigenous Maori entrepreneurs to participate.

Event Details and Registration
Where: Te Manu Atatū - Whanganui Maori Business Network, 12/14 Drews Avenue, Whanganui 4500

When: November 25 - 26, 2023
Cost: \$20 for the two days (includes meals), with limited accommodation and transport packages available for those travelling from Rangitikei or Ruapehu.

RSVP: Reserve your spot today by calling/texting 027 302 0979 or emailing kiaora@thriveNOW.org.nz

For more information and updates, visit the Thrive Whanganui event page on Facebook.



SHOP

Open Friday & Saturday
10am - 3pm
or by appointment.

SOME PRIVATE VIEWING SLOTS
AVAILABLE FOR NOVEMBER

EFTPOS AVAILABLE
(No Credit Cards)



1 Main Street, MARTON

Ph 027 277 5005 • Email: greener.marton@me.com

GrannysChristmasGrotto

Five local senior Rangers achieve top award in Girl Guiding

The Queen's Guide Award is the top award in Girl Guiding. It was introduced in 1946 and is recognised by Girl Guiding organisations throughout the world.

Five local senior rangers have recently achieved this Queen's Guide award. They are Brianna Lindsay, Jeannie Hird, Autumn Lilley, Charlotte Hardy and Izzy Hollard. Considering Whanganui did not have a Ranger unit for some time prior to these five becoming Rangers in 2019, this is a significant achievement.

On top of that, the Rangers have also had significant other commitments outside of guiding. Some are prefects of their high schools, involved in dancing, theatre and wearable arts, have performed at Rockquest, are sportswomen, and are also part-time workers.

Brianna, Jeannie and Izzy attend Whanganui Girls' College and Autumn and Charlotte attend Whanganui High School. Some of the Rangers have been involved in Guiding since Pippin level, 5 to 6 years old. Two of the Rangers, Jeannie and Brianna, still volunteer as leaders of the Brownie and Pippin units.

At the Awards Ceremony were the Rangers' families, and local guiding leaders who have

supported them on their journey. The Rangers will now have the opportunity to (as Brianna has already done) attend a special Queen's Guide ceremony at Government House in Wellington, hosted by the Governor-General.

What does it take to achieve the Queen's Guide? For a starter, it takes at least four years to complete. To achieve the award, rangers must:

- Complete 12 interest certificates on various subjects; for example, outdoor cooking, charity fundraising, governance, visual art, or languages. Each certificate takes around one school term to complete.

- Complete leadership clauses every year. This begins with learning how to be an effective leader. By their last year, the rangers were regular leaders of younger guiding units, were organising and running outdoor guiding events, and were taking up leadership roles in local theatre or political groups.

- Perform annual community and volunteer work and design advocacy projects on causes they care about. The Rangers gathered donations for Foster Hope NZ, collected for Heart Kids NZ, volunteered at the annual Whanganui City Mission Food Bank Drive, and created wellbeing bookmarks with

supportive messages and service links to be placed in local school libraries and public libraries.

- Set a personal goal and learn a significant new skill of their choice. For example, a Wearable Arts project or completing the Tongariro Crossing.

- Attend a Queen's Guide retreat somewhere in the country with other Rangers.

Completing a Queen's Guide Award demonstrates skills of teamwork, leadership, community service, and commitment, which can be used in all areas of life.

Anyone interested in Guiding can locate the nearest unit and their contact details at www.girlguiding.org.nz



Brianna Lindsay, Jeannie Hird, Autumn Lilley, Charlotte Hardy, and Izzy Hollard

River City Press

Positive story ideas and advertising most welcome

Phone us on 345 3666

or email

rivercitypress@xtra.co.nz

ASK AN AGENT

Question:

Hi Rob, I know my house needs improvements before going on the market, but I have a limited budget and I'm not sure what to do first?

Answer:

Great question! A good agent whose advice you trust should be able to guide you through important improvements to make and avoid spending money on things that won't affect the sale.



Harcourts

Whanganui

Rivercity Real Estate Licensed REAA 2008

Rob Bennett

Mobile 021 071 0016

Business 06 348 4444

Email: rob.bennett@harcourts.co.nz

Get glowing skin

Have a free consultation and try a Microdermabrasion for \$99 - usually \$130

Why Microdermabrasion

Get an instant skin pick-me-up that leaves your skin glowing and refreshed. A Microdermabrasion is a resurfacing treatment that cleanses and exfoliates.

Benefits



Clears congestion



Instant results with no downtime



Increases cell turnover for smoother skin



Stimulates collagen production for healthy skin



Before Treatment



After Treatment



Caci Whanganui

06 213 4333

85 Victoria Avenue, Whanganui

caci.co.nz

Local riders come back with awards from the Manawatū Show Hunter Champs

A team of eight riders from Wanganui Petre Pony Club rode to success after they competed at the Manawatū Show Hunter Champs in Foxton from September 29th to October 1st. They came home as the overall team champions and also received the prestigious horse mastership awards as well as many individual awards for their equestrian efforts. Under the expert eye of team coach Sonya Glennie, our riders trained hard to develop their skills and expand on their Show Hunter knowledge.

This equestrian event attracts Pony Club teams from all over the North Island and is an eagerly anticipated event on the Pony Club calendar. Over the course of the three-day event, 21 teams rode in five different classes, scoring points which contributed to the overall score of each team, with Petre Pony Club coming

out on top. Each team consisted of eight riders who rode in different categories according to the stride of their ponies.

CATEGORY A - Rokeya Fletcher and Apache, Aimee Tetzlaff and Cookies and Cream

CATEGORY B - Charlie Stone and Tawa, Isla Carver and Teina

CATEGORY C - Phoebe Rickard and Galaxy Little Nut Brown, Lily McIntyre and Galaxy Fever Pitch

HACKS - Ella Kingston and Caramel Kiss

DRAFT RIDER - Asta Norman and Polly

A show hunter is judged on jumping style, way of going, manners and ability to maintain an even pace over a course of at least eight fences. It is the technical art of jumping, where, in addition to leaving the rails up, the horse must ride a predetermined number of strides between related fences and maintain an even rhythm throughout the round. It

develops the relationship between horse and rider and is a breeding ground for our potential stars of the future.

Heading off to such an event is an achievement within itself, and our riders were in awe of the size of this event. The atmosphere was something else as the riders all came together for the love of riding. This event was a first for many of our riders and it certainly was a wonderful way to have fun, connect with the wider community, make new friends and build on skills.

The three days of riding and camping was a family affair with lots of parent support and our very committed groom, Stella Williamson, who came down to support her teammates. Our team mascot, Peter the lamb, enjoyed the show as much as the riders.

This year marked the 15th Anniversary for this event, which made it ex-



Photo credit: Photographer Alison Price – Spot On Photo

tra special. This event is run by an amazing group of volunteers from the Manawatū Pony Club and supported by many equestrian businesses.

Winning the prestigious horse mastership award for their overall team spirit, horsemanship, positive conduct and for upholding the fair play charter throughout the event was

a real highlight and a massive achievement for our young riders.

Petre Pony Club are looking forward to an exciting season ahead and looks forward to participating in more team events that are coming up on the calendar. If you would like to learn more about Petre Pony Club please message us via our Facebook page.

Swimming success

Paige Conley, the recent recipient of the Manawatū Junior Swimmer of the Year award, took out first place in the 14 years 100m Backstroke, Butterfly and Freestyle events and 200m Backstroke and Freestyle. Georgia Abraham (17), returning to the pool after a period of absence, was still fast enough in the women's 15 & over division to take out first place in each of the 50m and 100m individual events she entered.

The Steelformers West Coast Champs gave swimmers of all levels a chance to showcase all they have been learning in training. Whanganui's youngest swimmer taking part, Heidi Bennetts (7), took 6.5 seconds off both her 50m Freestyle and 50m Backstroke PBs, and 8-year-olds Taven Alderton and Maia Paki slashed their own 50m Freestyle PBs by 6.3 seconds and 4.4 seconds respectively.

The junior swim team (12 & under) is particularly strong in numbers just now, growing under head coach Richard Gheel's experience. Gheel has coached for more than 30 years, having represented Ireland at the 1988 Seoul Olympic Games. He also held the 100m and 200m backstroke records for Northern Ireland for 30 years.

Some of the junior squads are also coached by Verena Nowak whose passion for teaching children to learn to swim shines through during training sessions. The next focal meet for junior swimmers is the All Stars Junior Festival in Wellington in November, where last year the team took out the national award for the highest number of PBs in the 101-200 entries group.

The senior swimmers, aged 13 and over, are working towards December's Hawkes Bay Summer Long Course (50m) Champs and are chipping away at qualifying times for the National Age Group Champs in April and Division II Competition in May.

The Whanganui Swimming Club is very appreciative of all community support and would like to thank all the sponsors and volunteers who contributed to the success of the Steelformers West Coast Champs.

Pigeon racing results

The St Johns Club Wanganui Pigeon Racing Adjunct held it's fifth race of the season with a race from Waitara. The race attracted 92 pigeons from 6 fliers. The winning pigeon, from the loft of Shane Gudopp, covered the 152 km airline (to Marton), in 2hr 4min 35sec for an average speed of 1222.73 meters per minute or 73.36 kph. The pigeons experienced fine weather on their flights to Whanganui 122km, Waverley 96km, and Marton.

Results were:

Shane Gudopp (Marton) 1222.73mpm or 73.36kph; Brent Miller (Waverley) 1211.78mpm or 72.70kph; Dave Lacy (Whanganui) 1199.93mpm or 72.00kph; B and A Fairweather (Whanganui) 1198.70mpm or 71.92kph; Benedict Galanida (Whanganui) 1167.05mpm or 70.02kph; Don Lacy (Whanganui) 1150.06mpm or 69kph.

Golf results

Wanganui Golf Club 9 Hole

Canadian Foursomes - P McDowell & R Bourne (Net 35); K Bukholt & C Prichard (Net 38). **17/10/23 3 Clubs & Putter:** J Thomson (35); L Dunlop (37); S Mangan (38). **24/10/23 Cribs Day:** L Dunlop (net 21); P McDowell (net 22). **Championship - Silver Division:** K How B L Steward 3 Up **Bronze Division:** D Harrison B P McDowell 1 *

Castlecliff 9 Hole Club

Thursday, 19 October, Putting
Ladies: Joan Coxon 16 c/b, Anneke Van Dam 16, Jan greenside 17. **Men:** Pat Ryan 14, Allen Wills 15, Rodney Mence 16 c/b. **Raffle:** Tony Hore ***

Tawhero Golf results

20 October 2023 Friday Twilight 6 Hole Ambrose: Trevor Sammons & Matt Sammons, 17.9 Billy Beck & Lachlan Howe 18.3, Dave Johnston & Tom Clark 22.

21 October 2023 Saturday 9 Hole Haggie [stableford] Billy Beck 18, Dave Johnston 16, Jan Crossan 15.

24 October 2023 Tuesday 9 Hole Munroe Rosebowl Round 1:[stableford] **Men's Division 1:** Tom Clark 18, Dave Johnston 17, Billy Beck 15.

Men's Division 2: John Deighton 17, Bob McIntyre 15. **Women's Division 1:** Bernadette Hadfield 20, Jan Crossan 20. **Women's Division 2:** Priscilla Fonseka 22.

Upcoming Events:

Twilight 2 Team 6 Hole Ambrose Friday's Tee off from 3.30pm. No more Friday haggie moved to Saturday's 9/18-hole \$5 Haggie Tee off 7.30am-12.30pm.

Summer membership affiliated \$265 1st October 2023 - 31st March 2024

Inaugural tri-nations airforce rugby league tournament

The Royal New Zealand Air Force (RNZAF) is hosting the inaugural Tri-nations Rugby League Tournament between the RNZAF, Royal Australian Air Force and the Royal Air Force.

This event, to be held every two years, will enable a new avenue for building international military relationships and continue to maintain the strong networking relationships, while also contributing toward positive camaraderie between all nations through Rugby League.

The games will be played at RNZAF Base Auckland and the Bulls Rugby Football Club Grounds, near RNZAF Base Ohakea.

Game 1 will be in Auckland, while games 2 and 3 will be at Bulls. The dates and times are as follows:

Losers game 1 – Bulls Rugby Football Club, 30 October, 3.30pm

Game 3: RNZAF vs Winner game 1 - Bulls Rugby Football Club, 1 November, 2.30pm

The public is welcome to attend these two matches. To get to the grounds, turn left at Te Matapihi, the Bulls Community Centre building on Criterion Street.



Bulls - the venue for two games next week



Vincent Meats Home Kill offers different options

Vincent Meats, operated by Darryl and Paula Vincent, on Reynolds Road, Turakina, has been in the home-kill business for 14 years. Darryl was able to bring his skills as a qualified butcher and sheep and cattle farmer to the business and is now one of the few home kill operations in the region.

There are a number of options for lifestyle-ers who have anything from one to 20 animals, which need to be made into meat for themselves.

Darryl can go to the property with his truck, do the kill and return to his base to do the butchery and have the meat kept in his chiller. The second option is for Darryl to pick up the animals and bring them back to base, while the third option is for the customer to drop the animal(s) off themselves. "This is the most popular approach now," he says.

There is both the economic and taste appeal



of home-killed meat. Home-killed meat will be significantly cheaper than if you had to buy the cuts from the supermarket. You also know where your meat is coming from, especially if you prefer meat from animals brought up on organic food.

Darryl has celiac issues and so is rigorously gluten-free in everything he does.

Vincent Meats also offers to produce small goods (sausages, meat

patties and salami) from the meat you have supplied.

Another offer is to buy calves off them, rearing them and returning for home-kill. Yet another option is to buy one of their calves, pay a monthly grazing fee and have Darryl and Paula bring up the animals for 18 months before they can be home-killed for you.

Hunters also use Vincent Meats to butcher their deer.



13th ANNUAL DICE RUN

SATURDAY 11TH
NOVEMBER 2023

English, European or American Bikes Only

\$30.00 per person - Registration from 8.30am
Ride leaves from Caltex on the Ave @ 10.00am

Do you own a British, European or American Racing Series bike? Join the 13th annual Dice Run

The Triumph Riders Motorcycle Club Wanganui Chapter is having their 13th Annual Dice Run on Saturday, November 11. It is for 'Bears' bikes only - British, European, American Racing Series and the cost is \$30 per person.

The dice are rolled at the start of the trip, which is at Caltex, Victoria Ave, at each of the stops, and again when they return home to their base in Barracks Bunker, St Hill Street in Whanganui. The riders are told at each stop where the next stop will be. The rider with the highest number each time will win \$100. There will also be a major prize for the overall winner.

Over 100 riders are expected to take part including members of other chapters throughout the North Island and even a few from the South Island. Registration is from 8.30am at the Caltex Station on Victoria Ave and the run starts at 10am. Lunch will be halfway through the ride, and the

fun should be completed by 4 to 5pm. There will be a BBQ afterwards (which is included in the registration cost).

There are 18 chapters of Triumph Riders around the country, including Auckland, Waikato, Bay of Plenty, Hawkes Bay, Manawatu, Wellington, Christchurch, Westport, Marlborough, Nelson/Tasman Bay, Otago and Northland - but Wanganui was the founding chapter in 2011. Growth in numbers is impressive, with

over 450 members overall and growing.

The local chapter has about 35 members. They meet every second Sunday at Barracks for a ride start-

ing at 10am.

For more information phone Paul 027 4453 462. The members are looking forward to their 13th AGM in March 2024.



A previous motorbike event



Big Ev on the BBQ



Triumph Whanganui club founders, Wally and Doug

13th Annual Dice Run

Saturday 11th November

Bears Bikes Only

\$100 prize at each stop, one overall winner

SPOT PRIZES

\$30 per person - Registration from 8:30am

Ride leaves from Caltex on the Ave at 10:00am

BBQ BACK AT CLUBROOMS ON COMPLETION OF RIDE

CONDITIONS OF ENTRY: English, European or American Motorcycles only

NB: Triumph Riders MCC encourages participants in this event to take full responsibility for their personal safety and that of others involved

CONTACT PAUL: 027 4477 559

Sports Talk with Jared Smith

NZ Heartland XV team named

While all New Zealand rugby eyes will be on Paris on Sunday morning to see whether the All Blacks or Springboks become four-time world champions, some of our local talent have their own black jerseys to suit up with next week.

At the conclusion of the 2023 Bunnings Warehouse Heartland Championship with Steelform Whanganui runners-up in the Meads Cup for the second year in a row, the NZ Heartland XV was named to prepare for two end-of-season matches.

Retaining their squad players from the past two years are Whanganui captain Dane Whale and half-back Lindsay Horrocks, who played his 100th match for the union this campaign.

Joining them are utility back Peceli Malanicagi, lock Peter-Travis Hay-Horton and loose forward Doug Horrocks, among 11 debutants.

Having five players in the squad is the second highest of the 12 Heartland provinces, behind only three-peat Meads Cup winners South Canterbury with seven.

To my mind, these five are the strongest selec-

tions after each of them had standout campaigns for Whanganui, who overcame losing two of their first three games to earn their way into another Meads final.

Of the team's other standouts, prop Raymond Salu, who had a breakout year after not being initially selected, still affiliates to his native Samoa, having returned to Whanganui this year after three years offshore due to the Covid restrictions.

The same is true for Player of the Year Alekesio Vakarorogo, who scored 13 tries in the campaign, including a record five in one match, yet remains affiliated to his native Fiji.

Therefore, the only glaring omission, once again, is Whanganui's nuggety flanker Jamie Hughes.

Vice-captain this season, Hughes like his team, started a little slowly, but that was due to having been injured in the first preseason match.

It was no coincidence that when Whanganui hit their stride was when Hughes was back to full fitness, working with Doug Horrocks to really lift the loose forwards group.

Both Doug and Lindsay Horrocks are cousins - a

rare achievement to have two family members in the team at once - which nearly occurred last year when Dane Whale's younger brother Ben was in the non-travelling injury-standby group.

Lindsay Horrocks has nine appearances for the NZ Heartland XV, having debuted in 2015.

"It's invaluable to have Lindsay and William [Wright] onboard as they know what's expected when we get into a camp like this," said returning NZ Heartland coach Nigel Walsh, from South Canterbury.

"They're good leaders and have a lot of mana from players and coaches around them.

"They've been in and around the Heartland scene for a long time now and have proven their worth, which is why they've been selected.

"I'm pleased to have Sam Briggs and Dane Whale as part of the campaign, who will be key game drivers for our team," Walsh added.

The squad will play a Canterbury Development side in Methven on November 1st, then the NZ Barbarians in Oamaru on November 4th.

Steven Schwamm AREINZ & Jared Smith

0800 176 4321

✉ stevenandjared@arizo.co.nz

Licensed Salespeople (REAA 2008)

Selling fee 2% + GST (Terms and conditions apply)



Smarter Real Estate
arizo.co.nz



SPECIALISTS SINCE 1978

Structural, Full Machining,
Profile Cutting,
General Maintenance Specialists,
Certified Welding and
Steel Stockists.

Proud to support the
Triumph Riders 13th Annual Dice Run

363 Heads Rd, Wanganui
(p) 06 344 5065 (ah) 021 242 5525
(e) office@garmac.co.nz



Stockist of
AMSOIL

Motorcycle
Repairs and
Service

Proud to support the
Triumph Riders
13th Annual Dice Run

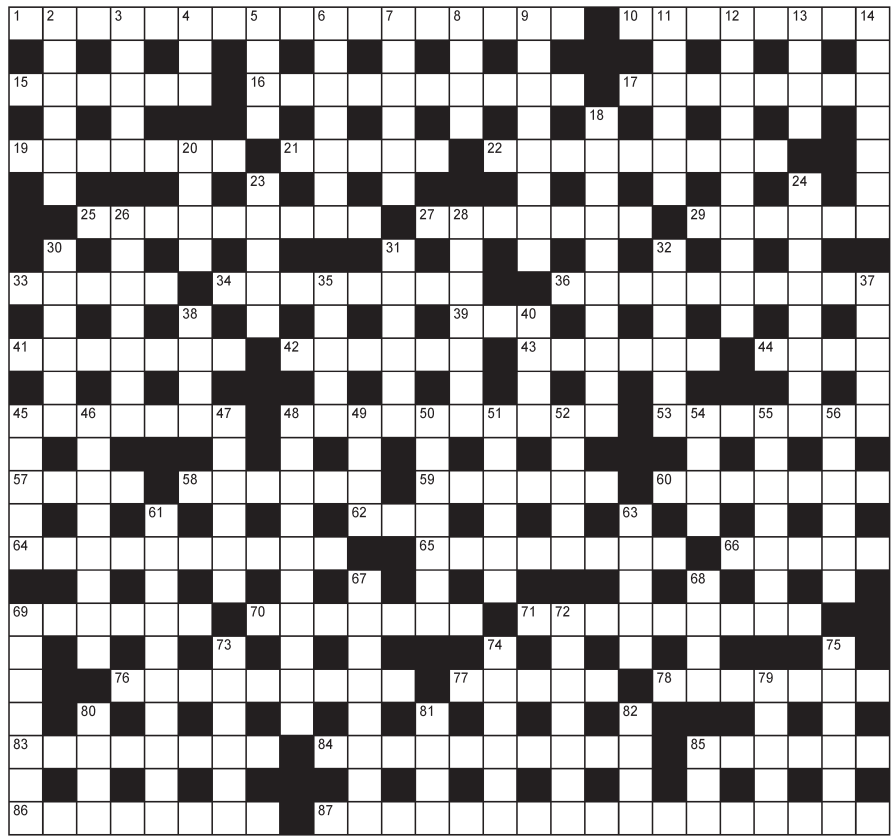
Brian Thorley
Motorcycle Repairs

100 Ridgway Street, Wanganui
Phone 06 345 7499

Jumbo crossword

ACROSS

- 1 At top speed (4,1,3,3,2,4)
- 10 Put together (8)
- 15 Leapt (6)
- 16 Diva (5,5)
- 17 Statuette (8)
- 19 Hospital attendant (7)
- 21 Uncooked bread (5)
- 22 Very profitable (9)
- 25 Keeps in good condition (9)
- 27 Church kneeling cushion (7)
- 29 Eight-note interval (6)
- 33 Waterway (5)
- 34 Beefy (8)
- 36 Sealed against moisture (10)
- 39 Unit of electrical resistance (3)
- 41 Young hare (7)
- 42 Remnants (6)
- 43 Unsusceptible to (6)
- 44 Matter from volcano (4)
- 45 Rattles (anag)(7)
- 48 Blew hot and cold (10)
- 53 Long steps (7)
- 57 Paper quantity (4)
- 58 Black eye (6)
- 59 Vague idea (6)
- 60 Extraordinary (7)
- 62 Lavatory (3)
- 64 Painstaking (10)
- 65 Women's underwear (8)
- 66 Lane (5)
- 69 Customer (6)
- 70 Brief garment (1-6)
- 71 About to happen (9)
- 76 Crisis (9)
- 77 Theatre platform (5)
- 78 Contagious disease (7)
- 83 Overwhelmed with emotion (8)
- 84 Place to sign (6,4)
- 85 Waterproof jacket (6)
- 86 Death (8)
- 87 Earn a favour or benefit by providing a service in return (4,3,4,6)
- 2 Non-tainted (6)
- 3 Rub out (5)
- 4 Colossal (3)
- 5 Adhesive strip (4)
- 6 One-horned creature (7)
- 7 Citrus fruit (6)
- 8 Barb (4)
- 9 One skilled in languages (8)
- 11 Evasive (6)
- 12 Beat about the bush (10)
- 13 Prison on warship (4)
- 14 Lift (7)
- 18 Declared officially (10)
- 20 Touch down (4)
- 23 Entire range (5)
- 24 Advance troops (8)
- 26 Non-professional (7)
- 28 Spray can (7)
- 30 Song of mourning (6)
- 31 Acid neutraliser (6)
- 32 Court game (6)
- 35 Hot drink (5)
- 37 Defrosts (5)
- 38 Business transaction (4)
- 40 Money plant (4)
- 45 Hessian (5)
- 46 Slaughterhouse (8)
- 47 Breathe out (6)
- 48 Defeated thoroughly (10)
- 49 Ringlet (4)
- 50 Wool fat (7)
- 51 Be at (6)
- 52 Draw forth (5)
- 54 Shade of colour (4)
- 55 Pancreas product (7)
- 56 Tooth coating (6)
- 61 Cost-effective (10)
- 63 Compare (5)
- 67 Green vegetable (8)
- 68 Unoccupied (4)
- 69 Cancel (4,3)
- 72 Make appear larger (7)
- 73 Punctually (6)
- 74 Artist's workshop (6)
- 75 Argue (6)
- 79 Bend over (5)
- 80 Finest (4)
- 81 Male deer (4)
- 82 Swain (4)
- 85 Donkey (3)



ARIZTO
Smarter Real Estate

Sell your Residential or Lifestyle property for a fairer fee!

- ✓ 2%*^{EST} Commission (Terms & conditions apply)
- ✓ Complimentary professional property photos with aerials, video & floor plan
- ✓ Recognised for being in the Top 20% for customer satisfaction nationwide
- ✓ Go to www.ratemyagent.co.nz and search Rochelle Burton
- ✓ Make your selling experience an easy one.... Contact me to receive the service and results you expect and deserve!

Rochelle Burton
027 295 8407
rochelleb@arizto.co.nz
Licensed Salesperson (REAA 2008)

SIMON SHUKER'S CODE-CRACKER Extra 783

EACH number in our Code-Cracker grid represents a different letter of the alphabet. For example, today 24 represents V, so fill in V every time the figure 24 appears. You have one letter in the control grid to start you off. Enter it in the appropriate squares in the main grid and solve the starter word. Fill in other squares in the main and control grids with the found letters and look for the next word. Follow the word trail through the puzzle to its completion. Visit www.codecracker.co.nz

1	2	3	4	5	6	7	8	9	10	11	12	13	14	15	16	17	18	19	20	21	22	23	24	25	26	
7	6	8	9	10	11	6	12	7	13	14	15															
6		16		17		11		8		3		15														
12	9	8	5	6		18	12	9	19	10	6	9														
	8			11					20		7		21													
8	11	11	8	4	12	4	6		9	8	22	6														
14		6			20		12				23		9		7											
5	13	24	6		12	17	14	13	11	18	12	7														
8		13		9				14			25															
11	13	7	7	6	11	9			26	13	2	6	9													
6		24		6		12			10		13		8													
23	11	6	6	5		16	12	11	4	21	13	15														
4		11		9		14		6		7		21														

A B C D E F G H I J K L M N O P Q R S T U V W X Y Z

Sudoku

	8		3	2		5		
				7		1		
	7			4	5	3		
			4				3	
4	1					8		2
	9				2			
		4	7	1			5	
		5		6				
		7		9	8		6	

Hard

Fill the grid so that every column, every row and every 3x3 box contains the digits 1 to 9.

Previous solution

8	3	4	1	7	9	5	2	6
6	9	1	5	2	8	7	4	3
2	5	7	3	4	6	8	1	9
1	4	6	9	8	5	2	3	7
7	2	5	4	6	3	1	9	8
3	8	9	7	1	2	6	5	4
9	6	3	8	5	1	4	7	2
4	1	2	6	3	7	9	8	5
5	7	8	2	9	4	3	6	1

Previous solution

1	W	R	E	A	T	H	S	C	M	X	Q	O	U
14	D	B	L	Z	N	I	P	K	G	V	F	J	Y

Previous crossword solution

ACROSS: 1 Kitty, 4 Play gooseberry, 11 Class, 14 Loyal, 15 Resuscitate, 16 Scimitar, 19 Cabaret, 20 Agape, 21 Unsettled, 24 Artillery, 26 Rascal, 27 Ablaze, 31 Fatty, 32 Emphasis, 34 Screen test, 37 Tin, 39 Manacle, 40 Repair, 41 Oboist, 42 Long, 43 Vestige, 46 Paper money, 51 Sponsor, 55 Dirk, 56 Utters, 57 Lethal, 58 Harmony, 60 Era, 62 Alternates, 63 Pristine, 64 Unite, 67 Poncho, 68 Evolve, 69 Undecided, 74 Hibernate, 75 Heart, 76 Venison, 81 Arachnid, 82 Incinerator, 83 Jetty, 84 Sharp, 85 Storm in a teacup, 86 Slash.

DOWN: 2 Isobar, 3 Tiara, 5 Leek, 6 Younger, 7 Occupy, 8 Sate, 9 Botanist, 10 Yachts, 11 Cumberbund, 12 Acts, 13 Strange, 17 Debit, 18 Melancholy, 22 Slump, 23 Ravenous, 25 Retract, 26 Rostrum, 28 Facade, 29 Escape, 30 Census, 33 Hyena, 35 Tiger, 36 Plug, 38 Noon, 43 Vodka, 44 Scrutiny, 45 Extras, 46 Preserving, 47 Pose, 48 Relapse, 49 Outfit, 50 Exact, 52 Plan, 53 Nominee, 54 Ornate, 59 Archbishop, 61 Onset, 65 Platinum, 66 Vixen, 67 Perhaps, 70 Nirvana, 71 Merits, 72 Reject, 73 Foetus, 77 Ideal, 78 Saga, 79 Sign, 80 Tofu.

5x5

S	T		S	
R		N		
A	A	E		
	O	E		
E	T	Y		

Insert the missing letters to complete ten words — five across the grid and five down. More than one solution may be possible.

R	A	T	E	D
A	L	I	V	E
N	O	D	E	S
T	H	A	N	K
S	A	L	T	S

Previous solution

Bridge club results UCOL celebrates exceptional high school learners

Whanganui Bridge Club - Bridge Results Week ending 22 October

Monday Ladder: N/S: 1. A Sutherland, J Smith 62.50 2. D Pech S Brotherston 59.13 3. R Collins, G Wood 54.57 4. G Pickett, G Keelty 53.13 E/W: 1. J Glenn, A Tims 56.49 2. R Rawson, R Bartrum 52.88 3. E Topfer, I Newbold 52.40 4. S Benefield B Annear 52.16 **Winner of 6 weeks of Ladder:** Noeline Kennedy

Tuesday Spring Pairs: N/S: 1. A Thirtle, S Baron 56.05 2. K Verhoek, D Nightingale 55.61 3. J Newman, G Handley 54.92 4. C Pepperell G MacLachlan 53.73 E/W: 1. N Kennedy N Bartrum 62.30 2. J Baker, T Watson 59.95 3. S Benefield, D Newman 53.99 4. M Meyrick, S Fonseka 51.50 **Winners of Spring Pairs:** Anita Thirtle and Steve Baron

Wednesday Spring Pairs: N/S: 1. M Ruby, L Eyles 64.20 2. A Hodges R Bowie 62.20 3. L Raine, B Charteris 53.70 E/W: 1. M Hicks M Ewing 58.20 2. A Williams, J Gillespie 5.30 3. B Evans, G Mooney 56.50 **Winners of Spring Pairs:** Anya Hodges and Karen Rainey

Wednesday Social: N/S: 1. S Pedley, C Harding 60.00 2. J Firmin-Jones, J Donkervoort 59.00 3. S Benefield, C Pepperell 55.00 E/W: 1. A Thirtle, J Newman 62.50 2. S Poff N Gale 54.00 3. I Newbold J Dodds 52.50

Friday Social: N/S: 1. R Purdy, C Pepperell 59.30 2. B Evans, L Vodanovich 55.46 3. I Back, B Jones 55.12 4. S Cvitanovich, L McLay 54.79 5. M Wyley, J Wagstaff 6. J Glenn, B Annear 52.28 E/W: 1. C Veltman, C Killington 60.71 2. J Newman, J Firmin-Jones 58.16 3. J Dodds, J Holt 56.60 4. J Delaney, R Story 51.68 5. S Pedley, S Brotherston 50.83 6. S Poff, A Thirtle 50.68

The U-Skills Academy Awards are in full swing, recognising the dedication and skill development of high school ākonga (learners) across UCOL | Te Pūkenga campuses.

Over the last week, awards ceremonies have taken place in Whanganui, Manawatu, and Horowhenua, with Wairarapa eagerly ready to honour exceptional students on Monday, 30 October.

Hayden Robinson, UCOL's Director of Secondary Tertiary, says that the awards, which take place each year, are a great opportunity to recognise the success of ākonga.

"The whole idea behind it is to celebrate the achievements of our ākonga doing something awesome outside of school. It's a big commitment to juggle school-work with their U-Skills Academy placements, but our ākonga have shown real dedication to their courses and studies."

The U-Skills Academy Awards bring together ākonga, their whānau, school principals and deputy principals, career advisors, and Ministry of Education representatives to acknowledge the achievements of these talented young rangatahi.

All students who participate in U-Skills are acknowledged with a certificate of attendance, plus there are three additional awards for the most dedicated, most improved, and most outstanding ākonga for each campus.

"We've seen lots of ākonga get nominated for their mahi this year, which is exciting! If they win, they get a UCOL goodie bag and a cash voucher to celebrate their achievement."

So far, the winners of the awards are;

Whanganui Improvement Award –

Zavian May-Green

Dedication Award –

Madison McGrath

Outstanding Student Award –

Coral Poynter

Whanganui High School

ākonga Coral Poynter says it felt extremely humbling to be recognised as the 'Most Outstanding Student' and she looks forward to continuing her studies at UCOL.

"The learning is a step above what I have been learning at high school. My lecturer is great at communicating and is always there to help with questions when I need it.

"I'm coming back to UCOL next year to do the U-Skills Business Course Level 3. I'm excited to have found a path that I want to continue when I finish high school!"

The U-Skills programme is fully funded through the National Trades Academy. The programme offers year 11-13 ākonga from 55 schools across the Lower North Island the opportunity to study tertiary education while still at school, says Mr Robinson.

"They get to develop practical skills and get a taste of potential careers, from mechanics and conservation to hairdressing, vet nursing, and early childhood education.

"Our aim is to provide ākonga with real-life industry experience, which hopefully helps them find a career they're passionate about."

U-Skills applications are now open for 2024.

"If you're interested in enrolling in U-Skills, contact your careers advisor at school or explore the options on our website. The U-Skills programme is a great opportunity for you to get valuable career experience as well as credits to put towards your NCEA school qualification."

To explore UCOL's U-Skills course offerings, visit <https://www.ucol.ac.nz/Documents/U-Skills%20Programme%20Guide.pdf>



Outstanding Student award winner Coral Poynter with Hayden Robinson, UCOL's Director of Secondary Tertiary

WHAT'S ON IN THE COMMUNITY

Alcoholics Anonymous

Phone 0800 229 6757. If you have a drinking problem maybe we can help. AA Wanganui area meeting list: Sunday, St Johns Lutheran Church Hall, 51 Liverpool Street, Wanganui, 9am; Monday, Friendship Hall, Morris Street, Marton, 7.30pm; Tuesday, St Johns Lutheran Church Hall, 51 Liverpool Street, Wanganui, 12.30pm; Wednesday, St Luke's Church Hall, 34 Manuka Street, Castlecliff, 7.30pm; Thursday, St Johns Lutheran Church Hall, 51 Liverpool Street, Wanganui, 7.30pm; Al-Anon (family support) Friday, Gonville Library meeting room, 12.30pm. Ph 0508 425 266.

Back to Tennis for Adults

If you haven't played tennis for a while or have always wanted to give it a go! Free lessons for the month of November. 2pm each Saturday at the Whanganui Tennis Club. Registrations necessary, just email or txt us. whanganuitennisclub.co.nz or text 0274 876053

Disco - Scout Jamboree Fundraiser

Scout Hall Swiss Ave, Gonville. Friday 27 October, ages 3-7, 4pm - 5pm. Ages 8-10, 5.30pm - 6.30pm. Ages 11 -15, 7pm - 8pm. Entry \$2. Goodies for sale. Txt Debbie 020 4176 3696 for more info.

Do You Have Questions About the Bible?

Come and join us at the Christadelphian Hall on Tuesday night at 7:30pm for Bible-based discussion and a cup of tea. All are most welcome. 138 Great North Road. Email: wanganui.ecclesia@outlook.co.nz / www.thisisyourbible.com

Jigsaw Exchange

Next meeting Saturday 28th October, held at Central Baptist Church between 10am and 11.30am. Contact Jack @ 343 1404 or 021 0277 5391 or email rega21@xtra.co.nz.

Porridge Watson - What's On This Week

'Word Soup' Poetry night, Thursday, 7pm. Saturday, Halloween Full Moon Drumming, from 8pm. Sunday, Annie's Jam Band from 3pm. Monday, Open Mic Comedy starting at 7.30pm + Taco Monday, \$2 for \$5.00. Entry to ALL events is FREE.

Schola Sacra Choir

performs Stainer's *The Crucifixion* and Maunders *Olivet to Calvary* conducted by Iain Tetley with Roy Tankersley on organ. Soloists Nigel Tongs and Chaliun Poppy. 2.30pm Saturday, 28 October 2023 in Christ Church, 243 Wicksteed St. Tickets \$25 adults, \$20 seniors, U-18 free, tickets from the Opera House or at the door.

St John Hospital Book Sale

27 October 10am-6pm. One day only. All books half price. 25 Tawa Street, Gonville.

Theosophy Whanganui Public Meeting

Usually held 2nd Sunday Monthly. Where: Community Arts Centre, back river entrance in the Awa Room. When: 2pm What: Presentation with respectful discussion and communication. Purpose: No dogma, 'Do no harm', explore ancient wisdom to develop self with the universe. Email: theosophywhanganui@gmail.com

The Whanganui Community Choir's Concert - "Together Hand in Hand"

is on 25th November at Central Baptist Church, cnr Dublin & Wicksteed Streets at 2pm, followed by afternoon tea. Musical Director - Caleb Arthur; Adults \$20.00, Seniors \$15.00, Students \$10.00, Children under 12 Free. Family Ticket \$50.00 (2 adults and 2 students over 12) Tickets available from choir members or at the door, or contact: Edwynna 344 7974 / 027 360 1335.

Wanganui Music Society Vocal & Instrumental recital

Sunday 29th October at 2pm, St Paul's Hall, Cooks St, Wanganui. Afternoon tea to follow, all welcome. \$5 entry at the door for non-members.

Wanganui Spiritual & Awareness Centre

Meetings 7pm Sundays, Quaker Meeting Rooms, 256 Wicksteed St. Local or visiting speakers or mediums sharing their spiritual gifts. Join our healing circle, take a raffle, stay for supper and chat. Everyone is welcome. Koha appreciated. See our Facebook page for details. Ph: 027-697-6308.

River City Press

Positive news stories welcomed
Email: rivercitypress@xtra.co.nz

What's On in the Community Notices

What's On in the Community notices are \$10 for up to 50 words. Contact River City Press, 52 Ingestre Street, Whanganui, by Tuesday 1pm to place your advertisement.



Sadly passed away recently...

Joyce Rose CUMMINGS, on 22 October 2023, aged 86 years.

Edward John J.P. (Ted) DOWNING, on 10 October 2023, aged 86 years.

Kathleen Marie KEENAN, on 20 October 2023, aged 78 years.

Cornelis MALIPAARD, on 19 October 2023, aged 90 years.

Nola Doreen SIM, on 16 October 2023, aged 95 years.

Rex Bayard TITTER, on 20 October 2023, aged 78 years.

Copyright:

River City Press produces and/or publishes advertisements strictly on the basis that River City Press is entitled to and owns the copyright in the advertisement so far as the copyright relates to publication or reproduction for publication in any newspaper, magazine or similar periodical or to broadcasting of the advertisement.

Cleveland Funeral Home
(06) 345 5522

Pre-Planning
Call or Visit For Your
Free Pre-Planning Pack

179 Ingestre Street | clevelandfunerals.co.nz

DEMPSEY & FORREST

FUNERAL DIRECTORS

Arrange a visit today and meet our friendly team.
We are here to help you in your time of need.
208 Guyton St Phone 06 349 0202 any time
www.dempseyandforrest.co.nz

Anderson Memorials
Your loving memories set in stone 100 YEARS 1914-2014

HEADSTONES

Family owned for since 1914

For all
monumental
work in all
cemeteries

Check out our
website below

462 Somme Parade, Whanganui - opposite the cemetery
Tel (06) 343 8708, Email: info@anderson-memorials.co.nz
Showrooms in Feilding & Palmerston North
www.anderson-memorials.co.nz

TRADES AND SERVICES

Cremate-a-Mate Pet Cremations

Individual cremation
Scatter box - Rimu box - or your own urn
2-3 days turnaround where possible
Pick-up & delivery included



Bryce & Sandy
06 348 0133
cremateamate@xtra.co.nz
Wanganui

vega

Get Your Best Mortgage Here

Natalie Sara
Residential & Commercial
Mortgage Adviser

022 164 1566
natalie@vegalend.co.nz
www.vegalend.co.nz



100% locally owned



Furniture removals door to door
National and international

390 Heads Rd, P.O. Box 5042 Wanganui
Phone: 06 344 7002 Email: darrell@hoskincarriers.co.nz

FOR LEASE

FOR LEASE

Office Space
Central City Shops
City Apartments
Big Secure Storage
for Planes, Boats, Buses etc.

Ph Craig, the local landlord
0274 434 432
Mitchell-Anyon Developments (MAD)

TRADES AND SERVICES

VINCENT MEATS

PROCESSING
AND HOME KILL
Meat processing done with care and efficiency by a
Qualified Trade Butcher with over 25 years experience.
Certified premises.

Darryl & Paula Vincent
Ph. (06) 342 6800 Mob. 027 283 1011
Email. vincentmeats@gmail.com
Reynolds Road, Turakina



MEAT AT YOUR PLACE OR MINE

Family Fun

ENTERTAINMENT

- Bouncy Castles
- Obstacle Courses
- Slides
- Sports Gear & Extras
- Rides & Foam Cannon
- Concession Gear




Phone Jason
021 174 5035
www.family-fun.co.nz

FOR SALE

BLINDS - Roller & Venetians to order. Free measure and quote. Strath Davis Furniture & Flooring, Ph (06) 345-0883.
NEW books available at River City Press, 52 Ingestre St. "From the Sea to the Mountain"; "Whimsical Tales of Old Wanganui"; "More Whimsical Tales of Old Wanganui"; "My Life - Annasophia".
NEW Season's Buxus box hedging Plants 10 for \$50.00. Good range of Native plant revegetation stock, \$6.00 each. Side dress your Polyanthus and Primulas with Dried Blood only \$8.00 per kilogram. Parnells Quality Tree and Shrub Nursery, 102 Fox Road Wanganui, Phone 344-6645, Established 1895.

PERSONAL

FREE confidential health checks, STI and HIV screening. Whanganui Hospital. Phone for consultation 348-1775/021-323-077.

LAWNMOWING + GARDENING

LAWNMOWING, section tidy-ups, pruning, WINZ quotes. TEL-TX 06-344-2535 021-0899-2345.

LAWN MOWING



Cutting Edge Lawns
Keeping Lawns & Costs Down!

- Locally owned & operated
- Pensioner discounts
- WINZ Quotes
- Ride on work

Wayne Bishop
Phone
027 555 3074

AFFORDABLE LAWMOWING

Great quality service, great price.
Pensioner rates available.
Call Paul on
021 245 4999

FRUIT & PRODUCE

FRESH vegetables available, open Thursdays, Fridays. Laugeson's Gardens, Westmere Road.

PUBLIC NOTICES

SECTION 101 SALE AND SUPPLY OF ALCOHOL ACT 2012

Bains Limited, 1 Polson Street, Whanganui has made an application to the District Licensing Committee at Whanganui for a renewal of an On Licence in respect to the premises situated at 1 Polson Street, Whanganui and known as **Castlecliff Hotel**.

The general nature of the business conducted under the licence is a Hotel.

The days on which and the hours during which alcohol is sold under the licence are **Monday to Sunday, 9.00am to 2.00am the following day**.

The application may be inspected during ordinary office hours at the office of the Whanganui District Licensing Committee at 101 Guyton Street, Whanganui.

Any person who is entitled to object and who wishes to object to the issue of the licence may, not later than 25 working days after the first date of the publication of this notice, file a notice in writing of the objection with the Secretary of the District Licensing Committee at DLAdministration@whanganui.govt.nz.

No objection to the issue of a license may be made in relation to a matter other than a matter specified in section 131 of the Sale and Supply of Alcohol Act 2012.

This is the second publication of this notice.

The first notice was published on October 19, 2023.

SECTION 101 SALE AND SUPPLY OF ALCOHOL ACT 2012

The Burrow Cellars, 49 Taupo Quay, Whanganui has made an application to the District Licensing Committee at Whanganui for the issue of an On Licence in respect to the premises situated at 49 Taupo Quay, Whanganui and known as **The Burrow Cellars**.

The general nature of the business to be conducted under the licence is a wine bar.

The days on which and the hours during which alcohol is intended to be sold under the licence are **Monday to Sunday, 12.00pm noon to 12.00am midnight**.

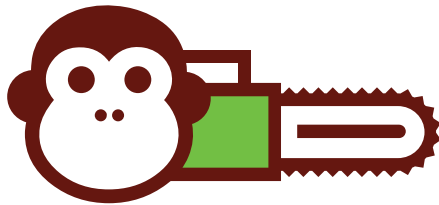
The application may be inspected during ordinary office hours at the office of the Whanganui District Licensing Committee at 101 Guyton Street, Whanganui.

Any person who is entitled to object and who wishes to object to the issue of the licence may, not later than 25 working days after the first date of the publication of this notice, file a notice in writing of the objection with the Secretary of the District Licensing Committee at DLAdministration@whanganui.govt.nz.

No objection to the issue of a license may be made in relation to a matter other than a matter specified in section 105(1) of the Sale and Supply of Alcohol Act 2012.

This is the second publication of this notice.

The first notice was published on October 19, 2023.



MONKEY BUSINESS Tree Care

OUR SERVICES

- pruning
- storm damage maintenance
- tree removal
- planting
- hedge trimming
- reductions

Get in touch
for a **FREE** quote!

Eddie White ARBORIST

mbtreecarenz@gmail.com • 027 385 6597

www.monkeybusinessnz.com



NEED HELP?

Emergency.....111

City Mission/Foodbank345 2139

Women's Refuge Wanganui 344 2204



CLASSIFIEDS

52 Ingestre St Ph 345 3666

Email: rivercitypress@xtra.co.nz

Nominate someone you think is deserving of our **Bouquet of the Week!**

Email or facebook message us with your nomination and reason why they deserve to win!

email: rivercitypress@xtra.co.nz
facebook: River City Press Wanganui



PUBLIC NOTICES / ENTERTAINMENT

SHARYN UNDERWOOD SCHOOL OF DANCE PRESENTS

The Magic is calling

4th & 5th November 2023, 5pm
Bookings at the Royal Whanganui Opera House

This advertisement kindly sponsored by... **Botanical Tree Services Ltd**

Christmas at Piko Piko Restaurant

Work Functions, Family Gatherings or a Group of Friends for a Christmas buffet!
Bookings essential - come and celebrate with us!

for bookings:
email: pikopikorestaurant@gmail.com
or text 022 315 4969

ALSO OPEN CHRISTMAS DAY
with a fabulous Christmas lunch!
Two sittings - limited availability
11am-12.30pm and 1-2.30pm
Members and guests welcome

CLUB metro 13 Ridgway Street Whanganui

BOX OFFICE **WHANGANUI VENUES & EVENTS**

ROYAL WHANGANUI OPERA HOUSE
Ph. 06 349 0511
Online bookings www.whanganuivenues.co.nz
Hours: Monday to Friday 10am - 1.30pm

Booking / service fees apply to all ticket sales

QUEEN: IT'S A KINDA MAGIC
Friday 27 October 8pm
Adult \$70.45 Groups 6+ \$65.45
Senior \$63.70 Child to 12yrs \$44.80

SCHOLA SACRA CHOIR
GOD SO LOVED THE WORLD
Saturday 28 October 2.30pm *Christ Church*
Adult \$26 Senior \$21 U18s free

HARMONIC RESONATORS - RONGO KI TE ORO TOUR
Friday 3 November 7pm *Concert Chamber WMC*
Tickets \$58

ST JOHN HOSPITAL BOOKSALE

27th October - Open 10am - 6pm

ONE DAY SALE ALL BOOKS HALF PRICE

All revenue supports **ST JOHN HOSPITAL**

St John Community & Training Centre
25 Tawa Street, Gonville, Wanganui
"Something for everyone"

Sharyn Underwood School of Dance **THE MAGIC IS CALLING**
Saturday 4 & Sunday 5 November 5pm
Adult \$19 Senior / Student \$16

ELTON JOHN vs BILLY JOEL NZ tribute
Sunday 12 November 7.30pm
A & B reserves: Adult \$72.60 - \$57.60
Senior \$62.60-\$47 Student/Child \$57.60-\$42

BILL BAILEY - THOUGHTIFIER
Tuesday 14 November 8pm
Premium \$99.90 A Reserve \$89.90

THE SWEET CAROLINE TOUR - tribute to Neil Diamond
Saturday 18 November 8pm
Adult \$70.45 Senior \$64.05 Group 6+ \$55.45ea
Child to 12yrs \$44.80

2024 WHANGANUI OPERA WEEK

Aotearoa NZOS Recital - Wednesday 10 January 1pm
Whanganui Museum Tickets \$25 Student \$15

In Praise of Music Oratorio - Sunday 14 Jan 11.30am
Collegiate Chapel - Tickets \$20 Student \$10

Public Masterclass - Monday 15 Jan 7.30pm
PEA Collegiate School Tickets \$25 Student \$15

Great Opera Moments - Saturday 20 Jan 7.30pm
Opera House Tickets \$50 Student \$40
Package deal for all 4 events \$110 - limited

RUSSELL HOWARD
Monday 5 February 8pm
Tickets \$89.90

MICHAEL JACKSON HISTORY SHOW
Tuesday 20 February 8pm
Adult \$74.45 Group 6+ \$69.45
Senior \$67.65 Child to 13yrs \$44.80

THE BEACH BOYS EXPERIENCE
Sunday 2 June 7.30pm
Adult \$71.60 Senior/Student \$66.60
Group 6+ \$61.60 Child to 17yrs \$51

MAGIC MEN AUSTRALIA
Saturday 13 July 7.30pm
A Res \$101.60 B Res \$81.60 C Res \$61.60 D Res \$41.00

We can sell to Ticketek NZ events

BUYING and SELLING USED FURNITURE

GINZA BARGAINS

Phone 345 3154
54 Maria Place Extn
Email: ginza2@xtra.co.nz

SPRING INDUSTRY RACEDAY

Thursday 2nd November
Racing from 1.10pm - 5.11pm
FREE entry & parking

WANGANUI FUNCTION CENTRE
Ph 345 3968 wjc.co.nz

WANTED ANY Cars Wanted Dead or Alive

We will beat any prices in the market by 10%

TOP CASH PAID
\$100 - \$1,000 for small car
\$100 - \$7,000 for 4x4 UTEs
Vans, 4WD, Trucks, Buses

Ph Today **021 032 3006**
Text: **022 856 0807**

PUBLIC NOTICES

TUNE into City Magic 106.9FM from Saturday. Old Radio Countdowns, Radio Serials, Sunday's 8am Woman to Woman. 12pm Dick Clark Segments on sport's negotiation, music documentaries, American Top 40s. Feedback 021 216 0886.

WANTED TO BUY

GINZA. Always buying, always selling. Good used furniture, antiques, China and collectables. Call Ginza 345-3154

RANGES + dishwashers in reasonable condition etc. Can pick up. Please Ph: 344-7503 or 021-0823-6126.

HEALTH & BEAUTY

JADE Traditional Thai Massage. Excellent massage at reasonable prices. 64 Guyton Street. Phone 348-8466 for an appointment.

GUEST HOUSE

FURNISHED room or caravan for a single person, big TV, lock on door. New kitchen & bathroom. By Collegiate. Large section, quiet, sunny. No bond. Phone 027-344-6699.

SITUATIONS VACANT

GET paid to exercise! Pamphlet Distribution require reliable runners to deliver RCP and brochures each week. Phone Bubs on 343-2010 or 027-218-2010.

Copyright:

River City Press produces and/or publishes advertisements strictly on the basis that River City Press is entitled to and owns the copyright in the advertisement so far as the copyright relates to publication or reproduction for publication in any newspaper, magazine or similar periodical or to broadcasting of the advertisement.

REAL ESTATE

spring A fresh start!
For a FREE market appraisal on your property, talk with Marion Farr today!
Experience + Expertise = Results

SOLD
Email: marionfarr@xtra.co.nz

THE WATSONS
ROSS WATSON REAL ESTATE MIRENZ
Licenced under the Real Estate Act 2008

Please call Marion Farr on 021 572 033 or (06) 343 8228

WEBSITE DESIGN

GET a stunning, contemporary website at minimum cost, or give your old one a strategic revamp. Phone Peter on 020-4161-3506 or email peter@toucan.media.

WORK WANTED

A builder, renovator. Plumbing, electrical, painting etc. Large and small jobs. Quality workmanship guaranteed. Rates negotiable. Call Leo, 027-4331431, (06) 927-5289.

MOBILITY scooters. Sales, service, repair, rental wheelchairs, walkers, ramps. Call Graeme 021-1195118 or (06) 347-6927.

PAINTER and Plasterer, professional, efficient and experienced. No job is too small. Reference available. Call or text 022-035-0175.

FIREWOOD FOR SALE

AFFORDABLE firewood starting from \$50 a cubic metre for sale. Please phone us on (06) 343-8466.

500 students compete in Mathex competition



Wednesday 18 October saw almost 500 children cram into the Whanganui Intermediate school hall armed with pens, calculators and their mathematical knowledge. Children compete in four levels from Year 5 to Year 8 working in teams of four at each level to answer twenty questions in thirty minutes.

They need to answer correctly or pass on a question in order to receive the next one. If they finish all questions correctly within the allocated time they "stop the clock" which means all teams stop at that point. This year only one team stopped the clock just before the thirty minutes was up!

Each year a new set of questions are compiled by a group of teachers, then typed up before being checked and moderated. The Mathex committee, which is comprised of teachers and ex-teachers, would like to thank Whanganui Intermediate for the use of the school hall and facilities and also the teachers who acted as markers for the competition. Roll on 2024!

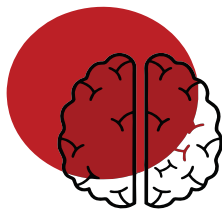
Results as follows:

Year 5 1st with 13 correct St Johns Hill 1 (Sophie Bennetts, Nico Kenny, Annabelle Stoop, Thara Goh Ramesh); 2nd equal with 10 Upokongaro (Alexander Cameron, Chrylah Peneha-Patea, Rhylee Topia, Iya Hutchinson) and Brunswick (Dean Cable, Jake Lim); 3rd with 9 Kaitoke School (Tanner Maason, Regan Drover, Mckenzie Rhodes, Isobel Cobb)

Year 6 1st with 20 correct in 29 minutes 56 seconds Durie Hill (Verti Lebo, Freddie Johnston, Ford Teal, Riley Hook); 2nd equal with 19 Westmere (Amelia Campbell, Ben Tetzlaff, Casey Sharratt, Mila Russell) and St George's 1 (Alex Por Jones, Emma Ding, Ethan Chen, Alexandra Manry); 3rd with 18 St Johns Hill 1 (Theodore Varga, Zachary Elliott, Sam Watt, Micah Chiet)

Year 7 1st with St George's 1 (Eshton Huang, Hadleigh Smith, Conrad Smith, Keane Joseph); 2nd with 15 St George's 2 (Julie Stoop, Margaux Orum, Amy Manu, Lydia Kong); 3rd equal with 11 St Georges 4 (Zach Newton, Toran Drover, Samuel McLivet, Nathan Cook) and Whanganui Intermediate 1 (Campbell Wilkins, Jake Buxton, Tim Smith, Nate Ward-Collins)

Year 8 1st with 18 Huntley (Sophie Cranstone, Lucas Hoyt-Plank, Archie Edwards, Ollie Halewood); 2nd equal with 17 Westmere (Phoenix Campbell, Owen Bunn, Charlie McBride, Sean Frieslaar) and Whanganui Intermediate 4 (Bruce McGregor, Leodin Joblin-Mills, Olivia Jackson, Jada Jukes); 3rd with 14 St George's 1 (Adam Ding, Vera Havath, Jacob Huang, Olivia Dickie)



World Stroke Day October 29

One in four adults will experience a stroke in their lifetime

World Stroke Day is an annual event that takes place on October 29th. It aims to raise awareness about stroke, a condition that affects the blood supply to the brain and can cause disability or death.

Over 12 million people worldwide will have their first stroke this year, and 6.5 million will die as a result. Over 110 million people in the world have experienced stroke.

The incidence of stroke increases significantly with age; however over 60% of strokes happen to people under the age of 70 and 16% happen to those under the age of 50.

One in four adults will experience a stroke in their lifetime, but many strokes can be prevented or treated if the risk factors and signs are known. The signs of stroke can be remembered by the acronym BE FAST,

which stands for balance, eyes, face, arms, speech, and time.

This year's World Stroke Day campaign is called "Together we are #GreaterThanStroke" and aims to encourage people to understand stroke risk factors. 90% of strokes could be prevented by addressing a small number of risk factors, including high blood pressure (hypertension), irregular heartbeat

(atrial fibrillation), smoking, diet and exercise.

The campaign also promotes healthy living and ways to recognize the warning signs of stroke and how to take action.

For survivors of a stroke the impact can be devastating, affecting physical mobility, eating, speech and language, emotions and thought processes. These complex needs can result in care and financial challenges for the individual and for their caregivers, as well as placing significant demands on health and social welfare provision.

There are two main types of strokes - Ischemic strokes and Haemorrhagic strokes.

Ischemic strokes occur as a result of an obstruction in a blood vessel supplying blood to the brain. This can cause a blood clot to form, that is - a cerebral thrombosis. The main cause of cerebral thromboses is fatty deposits in blood vessels and arteries.

Sometimes a portion of a blood clot breaks loose, enters the bloodstream

and travels through the brain's blood vessels until it reaches vessels too small to let it pass. This is called a cerebral embolism. The main cause of this kind of clot is an irregular heartbeat, known as atrial fibrillation (AF).

Haemorrhagic strokes

happen when a weakened blood vessel ruptures and bleeds into the brain. The blood builds up and creates pressure on the surrounding brain tissue. These bleeds can be caused by an aneurysm or an arteriovenous malformation (AVM).

**AT ANY SIGN OF STROKE
CALL 111**

F A S T

FACE DROOPING ON ONE SIDE
ARM WEAKNESS ON ONE SIDE
SPEECH MIXED UP, SLURRED OR NOT
TAKE ACTION CALL 111 IMMEDIATELY

Okere House
Dementia Care

Okere House welcomes your enquiries ...

As a Specialised Dementia Care Facility we offer Day Care, Respite and Residential Care for your loved ones in a warm and friendly environment

Please phone 06 348 4857 for more information
35 Treadwell St, Wanganui

Driving Miss Daisy Whanganui

Driving Miss Daisy is NZ's number 1 friendly and reliable companion driving service.

Driving Miss Daisy supports you with:

- Appointments, shopping and Social
- Caring extra support as needed
- Wheelchair accessibility
- Out of town trips

ACC registered vendor.
Total Mobility Cards accepted.

Bookings essential.
Ph: (06) 347 9100
Mob: 021 503 313
Email: whanganui@drivingmissdaisy.co.nz

Driving Miss Daisy

Quinlan Court

A retirement complex offering privacy, security, companionship and support for independent living for the elderly.

For more information contact us on
Ph 06 348 9505
59 Harrison Street, Whanganui
quinlancourt@soj.org.au

'Fullness of life for the earth and its peoples'
'Ki tonu tea o me te orokahanga a te tangata'

Welcome to

MASONIC COURT REST HOME

What makes Masonic Court Rest Home so special?

- No premiums charged on any rooms, including ensuite rooms.
- Beautifully kept expansive and sunny gardens.
- Recreational activities offered seven days a week.
- And most of all, the people here!
- Home cooked, delicious meals using locally sourced produce.

Masonic Court Care you can trust

1 Masonic Dr, Wanganui East 4500 • Ph: 06 343 9091
www.masonicvillage.nz



Preventing a stroke

What can you do to prevent stroke? Age makes us more susceptible to having a stroke, as does having a mother, father, or other close relative who has had a stroke.

You can't reverse the years or change your family history, but there are many other stroke risk factors that you can control — provided that you're aware of them.

1. Lower blood pressure
High blood pressure is a huge factor, doubling or even quadrupling your stroke risk if it is not controlled. Monitoring blood pressure and, if it is elevated, treating it, is probably the biggest difference people can make to their vascular health.

An ideal goal is maintaining a blood pressure of less than 120/80. For some, a less aggressive goal (such as no higher than 140/90) may be more appropriate.

2. Lose weight
Obesity, as well as the complications linked to it (including high blood pressure and diabetes), raises your odds of having a stroke. If you're overweight, losing as little as 10 pounds can have a real impact on your stroke risk.

3. Exercise more
Exercise contributes to

losing weight and lowering blood pressure, but it also stands on its own as an independent stroke reducer.

4. If you drink — do it in moderation
Drinking a little alcohol, such as an average of one per day, is okay. Once you start drinking more than two drinks per day, your risk goes up very sharply.

5. Treat atrial fibrillation
Atrial fibrillation is a form of irregular heartbeat that causes clots to form in the heart. Those clots can then travel to the brain, producing a stroke. Atrial fibrillation carries almost a fivefold risk of stroke and should be taken seriously.

6. Treat diabetes
Having high blood sugar damages blood vessels over time, making clots more likely to form inside them. Your goal would be to keep your blood sugar under control.

7. Quit smoking
Smoking accelerates clot formation in a couple of different ways. It thickens your blood, and it increases the amount of plaque buildup in the arteries. Along with a healthy diet and regular exercise, smoking cessation is one of the most powerful lifestyle changes that will help you reduce your stroke risk significantly.

Mobility Equipment Wanganui now the only local supplier

Graeme Rosewarne set up Mobility Equipment Wanganui 10 years ago and recently took over the parts equipment stock of Joe Lett, including the phone number. He also has the right to use Joe's slogan — "Think Mobility." Graeme comments — "They have been exceptional. Great to deal

with." The arrangement does not include mobility scooters as Graeme has two suppliers — Merits and AMW — plus parts for a wide range of other brands.

Graeme has his base at his home and goes not only to the Whanganui Saturday Market but also

to markets in Waverley and Marton. Last year, he was at the Palmerston North Home Show and says, "There were so many people who had no idea about the variety of mobility equipment available."

He is happy to do house calls bringing different items with him, including

mobility scooters or servicing scooters. He says, "I understand why people want to see if the scooter can go up their drive, out their gate and off down their road. I am more than happy to demonstrate how they work."

It helps that Graeme has a background in both the caring/hospital sectors (he worked as an enrolled nurse for ten years) and has had 30 years involvement in the parts trade. He is able to service everything he sells.



Graeme sitting on a mobility scooter next to his large trailer.

Mobility Equipment Wanganui Mobility Scooters

Locally owned and operated



Local sales, service, repair & rental

- Powerchairs
- Ramps
- Wheelchairs
- Walkers

Stockists of Goldfern Mobility equipment

Call Graeme
06 347 6927 or
021 119 5118
graemek1@gmail.com



Graze Out

TO ORDER

Email: grazeoutcaterers@xtra.co.nz
Call: (06) 327 4035
Call / text: 027 292 7753

Order Days

- Friday for Tuesday delivery
- Wednesday for Friday delivery

To order Ph (06) 327 4035 or text 027 292 7753 or email grazeoutcaterers@xtra.co.nz
EFTPOS available.

All orders to be placed by 3pm on the relevant order day (orders can be placed earlier)

Delivery Days

Delivery Days are as follows;

- Tuesday
- Friday

All payments can be made by either cash, eftpos or internet banking. Please contact us if you would like our banking details

There is a surcharge for all PayWave and credit card transactions

Dessert Menu

- Fruit crumble & custard
- Rhubarb & apple pie
- Self saucing chocolate pudding
- Lemon sponge
- Cheesecake

These desserts are available every week.

Ask us about our **Refer-a-friend Deal!**

Value Meals \$14.50 XL Meals \$17.00 Desserts \$7.00

Week 1	Week 2	Week 3	Week 4
6 - 12 November 4 - 10 December 1 - 7 January	13 - 19 November 11 - 17 December 8 - 14 January	23 - 29 October 20 - 26 November 18 - 24 December 15 - 21 January	30 Oct - 5 November 27 Nov - 3 December 25 - 31 December 22 - 28 January
1. Roast beef with gravy 2. Chicken with citrus sherry sauce 3. 5 spice pork with noodles 4. Crumbed fish & tartare sauce 5. Bacon-wrapped sausages 6. Beef pastry	1. Roast chicken with gravy 2. Corned beef with mustard sauce 3. Beef roulade 4. Honey garlic pork with rice 5. Classic fish cake 6. Macaroni cheese	1. Roast pork with gravy 2. Crumbed beef schnitzel 3. Hawaiian chicken 4. Battered fish & tartare sauce 5. Swiss roll with plum sauce 6. Sweet & sour pork	1. Roast lamb with gravy 2. Chicken katsu 3. Italian spaghetti & meatballs 4. Pickled pork & mustard sauce 5. Baked fish with lemon pepper sauce 6. Curried sausages

Due to extreme shortages and unavailability of Hoki fish, we have had to limit our choices of fish. Currently battered and crumbed fish are readily available so we have chosen to have both on the menu this cycle.

All meals are delivered fresh, not frozen and are served with potatoes & vegetables from locally sourced suppliers



Durie Hill 8 West Way

Open Home



Spectacular transformation

Prepare to be amazed by the incredible makeover at 8 West Way! This property has undergone a complete transformation, every detail has been carefully considered to create a home that seamlessly blends modern luxury with timeless charm.

As you step inside, you'll be greeted by a sense of freshness and sophistication. The new roof, along with full interior and exterior decoration, has breathed new life into this home, making it a true masterpiece. The brand new bathroom and kitchen are nothing short of exquisite. Entertain friends and family in your spacious kitchen-dining area.

3 1 2

For Sale Buyers \$559,000+
View Sun 29 Oct 11.00 - 11.30am
Web pb.co.nz/WGU170012

Anthony Floyd
M 021 477 435
 Leighton Toy
M 027 415 1515

College Estate 113 Purnell Street

Open Home



Comfy in College Estate

Situated close to several schools and town, 113 Purnell Street is a delightful property that is the perfect opportunity for families and first-time buyers alike. Step into a world of comfort and simplicity with this tidy three bedroom home. The property is elevated so you will enjoy views across Whanganui from the generous and well positioned lounge. The interior and exterior are in good condition which reflects pride of ownership.

There is ample off-street parking and a generous double garage. College Estate suburb is renowned for its family-friendly atmosphere and proximity.

3 1 1 2

For Sale Buyers \$419,000+
View Sun 29 Oct 10.00 - 10.30am
Web pb.co.nz/WGU170781

Anthony Floyd
M 021 477 435
 Leighton Toy
M 027 415 1515

Gonville 184 Heads Road

Open Home



Reap the rewards

Are you ready to embark on a captivating journey to restore and transform this beautiful 1920s home? Nestled conveniently near the hospital, 184 Heads Road is not just a house; it's a living piece of history ready for its new chapter. The home has good bones and just requires a bit of TLC inside and out. The roof is in good condition, and the house, being approximately 150 m2 (approx) offers you the opportunity to create comfortable living spaces.

The property sits on a sizable 625 m2 (approx) section, offering room to enhance the garden and outdoor living spaces.

3 1 1

For Sale Buyers \$319,000+
View Sun 29 Oct 1.00 - 1.30pm
Web pb.co.nz/WGU170825

Anthony Floyd
M 021 477 435
 Leighton Toy
M 027 415 1515

Aramoho 16 Spier Street



Sparkling on Spier

Welcome to 16 Spier Street, where the perfect blend of comfort and style awaits you! This exquisite four bedroom property has undergone a complete transformation, both inside and out, resulting in a home that is ready to impress. The lounge is equipped with a heat pump and a wood burner, ensuring that you and your loved ones stay warm and comfortable during the chilly months. At the heart of the home is a brand-new kitchen and a fully renovated bathroom.

Priced to sell at enquiries over \$449,000, this property offers incredible value for a modernised four bedroom home.

4 1 1

For Sale Buyers \$449,000+
View By appointment
Web pb.co.nz/WGU170365

Anthony Floyd
M 021 477 435
 Leighton Toy
M 027 415 1515