



Proud to be locally owned!

JAYLINE
 your fire place
 T's & C's apply. Excludes ULFBs. Limited time only.
 70 Wilson St, Whanganui Ph 06 347 6970
 www.combinedplumbers.co.nz

52 Ingestre Street, Whanganui. Phone 345 3666 or 345 3655, email rivercitypress@xtra.co.nz

“A gREAT rAW” - a theatrical debate on the topic of the greatness of war

BY DOUG DAVIDSON

Peace Co-Op Theatre Company in association with local Whanganui musicians, will be performing – ‘A gREAT rAW’ at the Repertory Theatre on Sunday, 10 December at 8pm. The play is inspired by the book ‘We Will Not Cease’ by Kiwi hero and conscientious objector in WW1, Archibald Baxter and uses clowns, music and multiple theatre masks that reflect on world wars and peace for the world today and possibilities for tomorrow.

The play premiered at the Dunedin Fringe Festival in 2021 and has been performed in several South Island locations, plus Hastings, Paekakariki, Wellington and recently at the Globe Theatre in Palmerston North. Performer Andy Arugula says, “The play is a theatrical debate. We wear different masks to represent the different characters in the debate, the topic of which is ‘War is Great. War is not Great.’” Those characters include

Archibald Baxter, who was subject to ‘Field Punishment No. 1’ on the battlefields in France because he refused to kill, Major General Smedley Butler, a highly awarded American veteran who later wrote a book, ‘War is a Racket,’ and New Zealand author Janet Frame who wrote a short story ‘Between My Father and the King’ on how her father and family suffered from his experience in WW1.

On the other side, there will be Kaiser Wilhelm II of Germany, Czar Nicholas II of Russia and King George V of the British Empire.

The play will include music from Tors Allan, Eros Li and Dave Muso, using music by personal permission, composed by Scottish folk singer Eric Bogle. As Andy says, “Music and art help to heal the wounds of war.” It will last about one hour, and while free to attend, a koha would be welcomed. Andy points out in con-

nection to Baxter and the belief that New Zealand’s entry into WW1 was enthusiastically supported, a survey taken back in 1915 showed a substantial amount of New Zealand men were not willing to fight overseas. Nevertheless, conscription was introduced in 1916, in contrast to Canada, South Africa and in Australia where two general public referenda rejected it. During that time, Whanganui was the main detention centre for conscientious objectors (incarcerated in the old building that is now the Recycle Centre).

Andy was brought up in Whanganui, and thanks to Collegiate teachers Mike and Joan Street, he developed a love of languages and drama, leading him to study French, Spanish and Japanese at Massey.

“While at Collegiate, I did a one-month exchange with the school in Nagasaki, which was the location of the second atomic bomb in Japan, so we



Andy Arugula

learnt about the effects of this horrific event at the Peace Museum there”, explains Andy. After university, he lived in Japan for five years including close to Hiroshima (where the first atomic bomb was dropped during WW2). Andy was also involved in the teacher exchange programme from 2006 to 2008 in Nagaizumi, our sister city in Japan next to Mt Fuji, which was partly

established to plant seeds of peace between New Zealand and Japan.

“Living near Hiroshima, I had an elderly neighbour whom at aged 13 had been absent from school on the day of the atomic bomb on August 6 1945. As the school was immediately incinerated in the explosion, all his classmates died, but he survived and lived the trauma that the destruction left behind.”

While in Japan he was introduced to the use of traditional masks in theatre and was fascinated by shrine and temple performances acting out ancient stories without words, using masks to represent battling forces – good and evil.

He later studied physical theatre using theatre masks with Italian teacher Giovanni Fusetti.

Continued on page 3

BEDROOM Specialists
OPEN 7 DAYS
 Locally owned & operated
 151 St Hill Street, Wanganui
 Phone 06 345 6084

Harcourts
 Whanganui
Looking to sell?
 call me
Paula Siddells on
027 500 1242
 for an award winning sales agent who gets results!
 #siddellsells

Paula Siddells
 Licensed Real Estate Agent REAA 2008

Warm nights keeping you awake?
 Meet the **Mighty Mini**.

MITSUBISHI ELECTRIC Quietly Superior Air Conditioning

Beat the heat!
 Keep bedrooms and living spaces cool and enjoy comfortable living during warm summer days and nights with a Mitsubishi Electric Air Conditioner.

DIMOCKS HOMESTORE
100% BedsRus PH 06 348 4877
190 VICTORIA AVE, WANGANUI **OPEN 7 DAYS**

Your New Kitchen
 Elegant, Unique, Handcrafted

ROB O'KEEFE JOINERY
 06 344 5040 | okjoiner.co.nz
 368 Heads Road, Wanganui

Joinery | Kitchens | Stairs
 Doors | Windows | Commercial

Campus Open Events

Scan the QR code to register a time to come and see us.

ENROL NOW
 We have courses in:

- Animal Care
- Rural Animal Technician
- Carpentry Level 3
- Agriculture Level 3 - Dairy

AGC TRAINING FOR INDUSTRY
 CHALLENGE YOUR FUTURE | WHAKAAACHA TO WERO
 Call 0800-348 8215 www.agctraining.co.nz

Check out what's in this week's RCP

The play 'A gREAT rAW' (see our front page article) should be very interesting for the content and how it is presented through the use of theatre masks. I have never seen theatre like this and am looking forward to going.

The Rotary Club of Whanganui will be celebrating their 100th year in 2024, and while they will be having a Centennial dinner, they are also spending around \$100,000 from their Foundation funds to benefit not only the Whanganui community but also the maternity section of a hospital in the Central African country of Zambia (page 7). There is also another article about the club sponsoring three local students to attend a Science and Technology Forum (page 8).

We have two articles about locals who have written books. 'Coco's Big Adventure' is by Michelle Aston-Koedyk and proceeds from her book about the cat's (mis)adventures



Doug Davidson
journalist@
rivercitypress.co.nz

are going to the SPCA (page 24). The other is 'Stories from the Oaken Box' by Bill Costello. While you might not know Bill, you might recognize his voice from the 16 years he spent on the phone welcoming you to the hospital (page 23).

Congratulations to all those involved in the 'Pack the Bus' appeal. You can see its success in the photo of the goodies taken out of the bus to be delivered to the charities (page 9).

- Doug Davidson

Whanganui Rotary Club sponsoring three students to a National Science & Technology Forum

The Rotary Club of Whanganui is proud to sponsor three students to the 2024 Rotary Science and Technology Forum. They are Aarna Marwah, Siobhan Sarkar, and Reina Jones, who are all students at Whanganui High School.

This forum was first set up in 1989 when Norm Winterbottom, John Yolland and Professor Roy Geddes set up the platform on which the forum is now based. Their aim was "to grow more Science graduates for New Zealand".

The forum operates as a Trust managed by the Rotary Clubs of New Zealand, working closely with Waipapa Taumata Rau (University of Auckland), the Auckland University of Technology (AUT) and Massey University.

Year 12 students at a New Zealand Secondary School can apply for one of the 168 places at the forum through a Rotary club.

This two-week immersive experience in Auckland includes lectures

Aarna Marwah, Siobhan Sarkar, and Reina Jones

and practical hands-on laboratory work hosted by the University of Auckland, the Auckland University of Technology (AUT) and Massey University.

Students develop an insight into the broad range of science, mathematics, and technology courses available, requirements for tertiary study and an appreciation of career opportunities. They also visit a number of commercial, scientific and technology organisations, but included in their busy schedule is time set aside for recreational activities, a day to explore Auckland, a beach day, and involvement in groups preparing cultural and/or musical performances.

A highlight is the formal dinner held at the conclusion of the forum. Guest speakers who are leaders in various scientific and technological fields address students at the dinner. Students invariably leave the forum inspired and highly motivated.

Part of the obligations of students attending the forum is to visit their sponsoring club and talk about their experiences. The Rotary Club of Whanganui looks forward to this keenly.



Glamorous gown on display

By Karen Hughes

The latest Outfit of the Month at the Whanganui Regional Museum is a 1930s evening gown.

The December choice is an evening gown made from gold satin and brocade lamé. The dress was given to the Museum by Whanganui resident, Jean Lambert. Regular followers of the series will remember other items from her collection, such as the rabbit fur coat and the velvet evening coat. Jean Lambert bequeathed to the Museum a large selection of clothing and household items spanning the late 1800s to the 1950s. She died in 1975.

The gown will be presented and discussed by Pou Tiaki/Senior Curator, Libby Sharpe. Members of the public can hear her informal public talk in the



The 1930s evening gown is being prepared for exhibition. Photo credit: Karen Hughes/Whanganui Regional Museum

Museum at 12.15 on Friday 1st December.

This is Libby's final talk in this series before retiring at the end of the year.

Entry to the event is free. Koha for the Museum is always appreciated. No booking is required, and

all are welcome – meet in the Atrium. The dress is on display in the Museum throughout December and January so that even those who are out of town over Christmas and New Year will have a chance to come in and see it.



RELAX YOUR BODY
SALE

SAVE UP TO \$1000

It's time to float on air.

When you sit on a luxurious Stressless® recliner your whole body instinctively relaxes: it feels like you're floating on air. Try one! Because feeling is believing.

IT'S TIME FOR

Stressless®

Buy with confidence with our 30-day Money Back Guarantee*

*Conditions apply

WANGANUI FURNISHERS

BRIDGE BLOCK 33 VICTORIA AVENUE
CARPET SHOWROOM LOWER ST HILL ST
PH (06) 3454554 FX (06) 3454556
PO BOX 154 WANGANUI
email: wangafurn@xtra.co.nz



Moving times,
moving values

For a FREE no obligation appraisal give Bruce a call.

Bruce McGhie
Sales Consultant
M 027 333 2587
E bruce.mcghie@pb.co.nz



pb.co.nz
Property Brokers Ltd Licensed REAA 2008

Property Brokers®

Club Metro 1940s party planned for Vintage Weekend

Each year, as part of Vintage Weekend, Club Metro has a party, and 2024 will be no exception. On Sunday, 21 January, it will be hosting a 1940s-themed party.

So get out your inherited WW2 uniform or head off to Amdram Costumes in Guyton Street to hire 1940s costumes and be ready to enjoy the occasion.

Matt from the Club says, "We're hoping to book out the street (Ridgway Street) and fill it with military vehicles thanks to the generous help of the local military vehicles group. Inside the club, there will be camouflage netting, sandbags, 1940s props and a few surprises, according to Matt.

Pictures of King George VI and Queen Elizabeth, popularly known as the Queen's mother but also as the grandmother of King Charles III, will be hanging up in a prominent position.

If you are outside and hear the bombing siren, rush into the club. There will be replays of the King's speech as well as Churchill's famous 'We will fight on the beaches... we will never surrender' speech, and the evening will end with his Victory Speech.

The doors will open at 6pm, and proceedings will commence by 7pm. Tickets are \$30, including supper and live entertainment, most likely with a brass component.

Bring your singing voices to join in with those famous WWII songs, 'We'll Meet Again,' and the 'White Cliffs of Dover.' There will be no excuses, as the Club will provide sheets with the words.

Tickets are limited to 160.



1940s outfit

Whanganui's Christmas Parade is on Saturday, December 9

Mainstreet Whanganui Christmas Parade is on Saturday, December 9, at 2pm and will be followed by a FREE family event at Majestic Square. This is an opportunity to take part in Whanganui's largest annual community event and to enjoy the fun, inclusivity and good vibes the parade brings.

It is also an opportunity for businesses and organisations to showcase their talent and diversity.

The parade will include the following favourites:

- Thomas the Tank Engine
- The Cinderella pumpkin
- Classic and Vintage cars
- Brass Whanganui
- Brass Whanganui Concert Brass
- The Whanganui Highland Pipe Band

- Community Drumming Whanganui
 - Mosston School: An Alice in Wonderland Christmas float
 - Whanganui Roller Sports Incorporated: Skaters skating along with a truck
 - Men's Shed: Snoopy and the Red Baron plus an as yet undisclosed recently created float.
 - Whanganui Junior Surf
 - Whanganui Boys and Girls Gym Club
 - River Rockers Whanganui
 - Whanganui Scout Group
 - River City Filipino Club and of course - Santa in his Sleigh
- There will be a number of new entries this year, including:
- Trident Homes Whanganui.
 - Whanganui Toy Li-



brary: Dressed up Christmas toy workshop float.

- River City Press: The Tram
- MP Carl Bates: Trailer or purpose-built float.
- Keith Hay Homes: branded Ute towing their 'Wendy House', that can be won, decorated for Christmas and kids dressed up as elves.
- Talileleia of Samoa Entertainment Group
- NZ Army Whanganui, 5th/7th Battalion

The after-party at Majestic Square is from 3pm till 4pm with free family entertainment and the chance to meet Santa, who will once again perform his lolly throwing skills at the giant 'end of parade lolly scramble'. Also featuring will be two performances by the IPU KODAMA Japanese Drum Team.

At the same time, there is a Mainstreet Float competition with prizes as follows:

- Best vehicle float: \$200
- Best walking float: \$200
- Best costumes: \$200

This means you could win for your organisation, group, school or a charity of your choice.

The route starts at the Ingestre Street/Victoria Ave intersection and travels down Victoria Avenue to Watt Fountain at the intersection of Ridgway St. To make sure you get the best viewing position, try to get there before 2pm.

"A gREAT rAW" - a theatrical debate on the topic of the greatness of war

Continued from page 1

He explains that the "theatre masks are like magnifiers to exaggerate the characters. Masks are not commonly used in Western European theatre, as much as before. While mask culture is huge in the Americas, Asia, Africa and even in Switzerland. Theatre masks lost favour generally, partly because of the destruction of cultural traditions due to the world wars."

Andy summarizes the play as follows: "The voices of ancestors come together to question the greatness of WW1, to uncover the pain and suffering of a century ago in the hope we may not repeat the mistakes today."

The play is produced by PEACE Co-Op Theatre Company and has been supported by Creative Communities and the Whanganui District Council.

WIN TICKETS

Club Metro have two double passes for their 1940-themed party on January 21, to give away in a draw for our readers. To win one of the double passes, all you need to do is send an email to rivercitypress@xtra.co.nz, putting '1940s party' in the subject line and giving us your daytime contact details and name.

Alternatively, you can bring those details into the River City Press office at 52 Ingestre Street. The draw will be made on Friday, 8 December.

Better late than Never

VICTORIA DENTAL

Make an appointment today

06 345 3222

Victoria House
1a Rutland Street, Wanganui

COLOURPRO PAINTING
Interior and Exterior
Fully Qualified • Free Quotes
WE PAINT SO YOU DON'T HAVE TO!
Book in for your summer projects now!!

Phone Ash Regan 027 856 1779
Email colourpropainting21@gmail.com

THOMPSON PLUMBING & GAS LTD
Master Plumbers

- General Maintenance Plumbing
- Hot Water Systems
- New Builds and Renovations
- Heating
- Programmed Maintenance
- Septic Tanks and Wastewater Systems
- Drainage and Unblocking
- Rain Water Tank Installation
- Gasfitting Service

06 345 0924
office@thompsonplumbing.co.nz
thompsonplumbing.co.nz

SUMMIT Electrical

Top Service • Top Workmanship • Top Electricians

- 24/7 Service
- FREE Quotes
- Member of HAZARDCO
- For all your electrical requirements

Summit Electrical Services Ltd
0800 2 SUMMIT
0800 2 786 648
Todd Cowan - 022 325 0056

Master Electricians
Electrical Contractors Association of NZ

Find us on Facebook

Gonville superValue
just what you need

THIS WEEK'S SPECIALS

Frozen NZ Scotch Fillet Steaks **only \$15.99 kg**

\$15 Trays Crumbed Beef Schnitzel **only \$10.00 each**

WEEKEND SPECIAL

Frozen Legs Lamb **only \$10.99 kg**

Chicken Drumsticks only \$5.49kg

Whole Neck Dog Bones only \$1.99kg

PRODUCE

Avocados **only \$1.19 each**

Telegraph Cucumbers **only \$1.79 each**

NEXT WEEK'S SPECIAL - STARTING 4.12.23

Frozen Mutton Chops or Roasts **only \$9.99 kg**

All Fresh \$15 Trays Chicken **only \$10.00 each**

All items while stocks last (no rainchecks). Get in early.
47 Abbot St, Gonville • Ph 06 344 3002 • 7am-8pm, 7 days
www.wanganui.store.supervalue.co.nz

3 MONTHS FREE

If your alarm system is monitored from out of town, switch to Alarm Watch and get three months alarm monitoring for free. Call us to find out more!

WARNING
ALARM SYSTEM MONITORED BY



ALARM WATCH
(06) 349 0999



**SMART APP
INCLUDED!**

World class alarm monitoring, by Whanganui people, for Whanganui.

Alarmwatch.co.nz

Bushy Park Tarapuruhi features in 26 Forest and Bird Centennial

26 Forest & Bird Centennial project was launched on September 8 and runs for six months. It is in partnership with 26, a global not-for-profit writers' collection that establishes projects around the world, most recently focusing on environmental and climate issues.

The project has seen 26 New Zealand writers and artists visit 13 of Forest & Bird's 128 local branch projects to meet the volunteers and some of the locals – the native birds, lizards, and plant life. Each pair had to create an original artwork, a centena poem

(a 100-word poem that must start and finish with the same three words) and a 260-word essay inspired by the people they met and the nature they encountered.

Whanganui-based writer Catherine Macdonald and artist Lee Byford-Danes, from Palmerston North, visited Bushy Park Tarapuruhi earlier this year and produced an oil painting, centena poem and short essay.

Catherine's poem is as follows:

IN THIS LIGHT

In this light the forest looks fresh, bright every surface is alive, the manu are busy.

There was rain the day before but today there is sun above the canopy filtering down.

The light changes as we move through the shadows grow solid in places the forest stills, suddenly thoughtful, waiting.

The sun's still there, but hidden now.

Beyond, silver light plays on water a lake formed by a slip.

Where ever you look there is a world, an eco-system

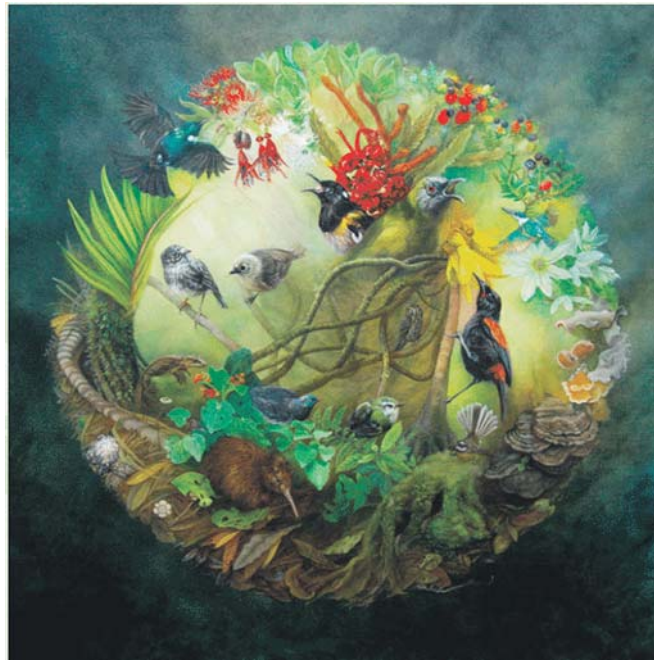
you get the feeling that nothing is wasted and everything is where it's meant to be working

together, in this light.

Lee explains her painting as follows:

The painting was created in transparent layers to convey this depth. With plants, insects, and birds weaving in and out of each other, I tried to create the circular narrative of their wild interconnect-edness. The play of light and shadow resonated with both Catherine and I, and the way light dances around spotlighting gems of fern frond, fungi, leaf tips, and bird's eyes was at the heart of this work. The medium is Oil on canvas, 60cmx60cm.

Painting by Lee Byford-Danes



Samsung washing machine recall

Owners of top-loader Samsung washing machines manufactured more than a decade ago are being encouraged to double-check their serial numbers after a fire at a home in Auckland last month.

The units were voluntarily recalled in 2013 due to a fault that could cause them to overheat and catch fire.

The affected models are:

- SW75V9WIP
- SW65V9WIP
- SW70SPWIP
- SW80SPWIP
- WA85GWGIP
- WA85GWWIP

To check your serial number, look for the sticker on the back of your washing machine. The serial number is usually a

10-digit code.

If you have one of the recalled washing machines, please stop using it immediately. Contact Samsung on 0800 SAMSUNG to request a repair, replacement or refund.



FOR THE BEST HIRE EQUIPMENT IN TOWN

MARQUEES • MACHINERY HIRE PARTY HIRE & SALES



26 CHURTON STREET PH 345 7017



www.hiremasterwanganui.co.nz



We can manufacture and install **modern & efficient windows in any home**

For more information on window solutions visit www.rivercityaluminium.co.nz/healthy-homes or phone 06-348 7063

RIVERCITY BUILDING & ALUMINIUM - 7 Wilson Street, Whanganui

Future-proof your home with Retro Fit Double Glazing or Insert Aluminium Windows

Make your home healthier, more energy efficient and better for the environment.

Did you know your bank may be able to help with low fixed-rate loans?

No interest or 1% fixed interest loans are available to support Healthy Homes upgrades.

Contact your bank for criteria and eligibility

QUALIFIED INSTALLERS



LICENSED BUILDING PRACTITIONERS Building confidence



Whanganui Jazz Orchestra pays tribute to Rodger Fox

This Sunday sees the season finale of our jazz club at the St Johns Club, and once again, the Whanganui Jazz Orchestra will fill the air with wonderful sounds and positive energy to take us into the holidays.

What makes this performance so special is that the orchestra is donating the proceeds from the concert to the Rodger Fox Big Band's 2024 tour

to the United States. The tour lost out on government funding and is in the position of having to fundraise to cover the shortfall in its budget. The band will represent our national jazz community by attending the Jazz Educational Network Conference in New Orleans, followed by performances in Baltimore and Washington, and concluding with a recording date in New York. This



Vocalist Bridget Cook with the Whanganui Jazz Orchestra performing at the Saturday morning market.

is a wonderful opportunity for some of our finest jazz musicians to showcase their talents and network with jazz musicians and educators from the home of jazz and around the world.

Our Jazz Orchestra is closely connected to Rodger, who supports our jazz community in many ways. Not only does he offer his expert advice on the direction of the orchestra, but he also provides us with orchestrations to use. He is the musical director of our International Jazz Day Celebrations and is,

together with partner Erna Ferry, an inspiration to our students and everyone who supports the music. This is a fitting way to thank him for all he has done and continues to do for us.

For those of you new to the jazz club, come out and meet our jazz community and enjoy the great music performed by our ever-evolving jazz orchestra under the direction of Riwai Hina. Not only does the band feature some of our finest local musicians, but also musicians from Marton and Palmerston

North. The repertoire is varied and includes jazz standards, popular tunes and gems from the New Zealand songbook. There are sure to be tunes that will get everyone swinging into the festive season. Come and join us!

And to our members, let's have a great turnout and show our support for Rodger and his band.

Sunday 3 December, 6:30 pm @ St Johns Club, 158 Glasgow Street

General Admission \$25, Members \$15. Memberships are available at the door

Council moves forward with consultation on school speed limited

Whanganui District Council councillors have agreed to go ahead with a public consultation on whether speed limits will be changed around Whanganui schools, as part of a Speed Management Plan.

Launching in February 2024, the consultation will focus on reducing speed limits around the district's schools. The decision was made at the council's Strategy and Policy Committee meeting early today.

"The council, along with Waka Kotahi (New Zealand Transport Agency), has an important role to play in delivering safer speeds around all schools," says Damien Wood, the council's Transportation Manager. "We share a vision where no one is killed or seriously injured in road crashes."

"Currently the speed limits around our schools do not ensure optimal safety for tamariki and rangatahi travelling to and from school. Other towns and cities around the motu have already implemented safer speed limits around their schools, and we aim to follow suit."

"The consultation will be an opportunity for the community to let us know if we've got it right when it comes to the district's speed management."

As a road controlling authority, the council is required by Waka Kotahi to reduce speed for 40 percent of local schools before mid-2024, with a goal to establish speed limits around all schools by the end of 2027. The council is also obligated to develop and consult on a Whanganui District Speed Management Plan, outlining its strategy for managing speed limits from the present through to June 2024 and then to 2027.

"The proposed speed limits around schools range from between 30km/h to 70km/h, depending on the type of road the school is on. Westmere School is presently the only school in Whanganui with appropriate speed limits in place," says Damien Wood.

The development of the Speed Management Plan will look at various approaches ways to achieve safe speeds around schools. Additionally, several other minor proposals are also being put forward following calls for change from the community, as well as some locations where the posted speed does not align with the current legislation and bylaws. These are existing situations that require formalisation.

Dates for the consultation will be notified to the Whanganui community in February 2024.

WANGANUI JAZZ ORCHESTRA

St Johns Club

158 Glasgow St, Whanganui

Sunday 3 December from 6.30pm-8.30pm

Doors open at 5.30pm for meals, snacks & bar.

Admission: Members-\$15 Non-Members-\$25

Enquiries to Ken, phone 022 431 5434

www.wanganuijazz.org.nz - All Welcome - Pay at the door.

"Bright, exciting, foot-tappin' fun."



INTERNATIONAL SERIES 2023

R3: DEC 26 DEC WHANGANUI



CEMETERY CIRCUIT

BUY EARLY BIRD TICKETS & SAVE!

Get yours now at cemeterycircuit.co.nz & isite Whanganui

WHANGANUI ALL YOU NEED (AND THEN SOME)



Rotary Club of Whanganui

Celebrating **100 YEARS** of community service

GALA DINNER

13 April 2024

The Rotary Club of Whanganui will be celebrating 100 years in 2024

A short history of Rotary and The Rotary Club of Whanganui

Rotary was the first service club in the world, having been established back in

1905 by Paul Harris in the USA. The concept soon spread, including to New Zealand, where

the first Rotary Clubs were set up in Auckland and Wellington in 1921. Whanganui was not far

behind with the formation of the Rotary Club of Whanganui in 1924.

The original membership was a bit of a who's who of Whanganui with prominent businessmen (it was open only to men back then), and a couple of ex-mayors as members.

The nature of membership has changed over the years, with women playing an important role at all levels (membership was opened

up in 1989) and with a much wider cross-section of the community joining. The style and conduct of meetings have also become more flexible and open.

What has not changed has been the commitment to the objectives of Rotary, which are based on "the ideal of service in each Rotarian's personal, business, and community life."

As such, Whanganui Rotary has been active

in community projects in Whanganui, New Zealand and in several countries throughout the world. The club has also been active in supporting Rotary's pledge to end polio in the world, a pledge which is so close to being achieved.

A focus for the club has been young people, and over the years, numerous students have been sponsored to go to leadership camps, outdoor pursuits camps

and Science and Technology forums. At a primary school level, the club has been a keen supporter of a range of programmes, including sponsoring Duffy Books in schools.

Much of the funding for these projects and grants has come from its annual 'Monster Book Fair,' which for 2023 has extended to regular Saturday sales as well.



Patients at Chitambo Hospital

Current President of the Club Dot McKinnon and Denis McGowan, chair of the Centennial Committee.

The Rotary Club of Whanganui



The Rotary Club of Whanganui is celebrating 100 years of community service with a

Gala Dinner at the Whanganui Memorial Hall on Saturday 13 April 2024

All past and present Rotarians along with Partners and Friends are welcome

Tickets are \$100 per person

To register email

whanganuirotary100@gmail.com

for further information ring Dot McKinnon on 027 555 2886

Projects associated with the Club's Centenary

The Whanganui Rotary Club has built up funds collected over the years in its own Foundation, ready to use when suitable projects need extra support. As it is their 100th, the Club has decided to spend up to \$100,000 of these funds.

They have already contributed \$30,000 to the series of exercise stations on the Riverbank between the Town and Cobham bridges for the benefit of the community to use. This was completed earlier this year with support from the District Council, Sport Whanganui, Ngā Tāngata Tia-ki and Tupoho.

Another project which has been agreed to recognizes Rotary's international commitment is to support the building of a neo-natal building in the Chitambo hospital in Zambia, collaborating with other supporters in New Zealand and Scotland and with the Government of Zambia. This hospital was built close to the village where the famous explorer and missionary David Livingstone died.

Early next year the club hopes to advise the grant of the remaining \$40,000 for a project or projects in Whanganui.

As part of their centennial celebrations, the club will be having a centennial dinner in June next year. It invites all present and past members to come, as well as those with an interest in the work of Rotary. See the advert on this page.

To find out more about the Rotary Club of Whanganui, go to www.whanganuirotary.org.nz.



The exercise stations opening in December last year.

The party begins at the Musicians Club this Friday



This Friday will be the final Musicians Club Night of 2023. It will be a rockin' affair as we bring in the holiday season with good music, good company and good cheer.

We are not expecting any 'foreign' talent on the night, but then you never know who will turn up to put their names on the board and get up on the stage for the open mic session. What we do know is that there will be at least two local bands performing.

'Remembering Geoff Home' is a band the Musicians Club have as-

Ngāti Skank: Back - Denis, Eneti, Ross. Front - Josh, Bobbi
Transistors: Dave, Owen, Rohan, Lucas, Geoff

sembled to acknowledge one of our whānau who passed away recently. Geoff formed the Transistors which featured his songwriting, piano playing and singing. The band were regulars at the club and played at various venues around Whanganui including the Caboodle and Vintage Weekend.

Music was everything to Geoff. It was his life and who he was. We celebrate his joyful contribution to our vibrant music scene. The band performing on

Friday will be made up of members of the Transistors and other friends who knew and loved him.

Ngāti Skank is a Whanganui brewed band fresh to the scene with music that crosses genre divides. Their songs are inspired by the ebbs and flows of singer Bobbi Rae's life, cooked in a spicy mix of the band's eclectic musical backgrounds. They will be showcasing music from their new multimedia adventure entitled The Taniwha and the Kehua,

which debuts @ Porridge Watson on 8 December.

For anyone new to the club, we run a 'bring your own and take away your empties' policy, and you can also bring a picnic! Children are always welcome. Come and share your love of music with a community dedicated to keeping it live.

Friday 1 December @ Musicians Club, Drews Ave from 7pm. General Admission \$15 Members \$10.

Rest home residents taken for a spin on unique motorbike

Mo calls it his mobility scooter. So it was appropriate that he provided rides on his 2017 Can-Am Spyder F3 Limited for Summerset Rest Home residents.

The retired Mo provided short circuits on the rest home roads for residents who included female nonagenarians.

His three-wheeler 1,330cc motorcycle (two wheels at the front and one at the back), with the 2023 model retailing at \$43,000, was made in Canada by Bombardier Recreation Products (BRP).

The Rotax 3 engine puts out 115hp. The machine has a reported top speed of 125mph.

BRP started out making snowmobiles, Mo said. Then they decided to take off the skis and put wheels on the product.

"Then it made a hull and fitted a Hamilton Jetboat engine to it. So it had two-seater motorbikes for the water. They are the Seadoo and they go like a cut cat."

Mo's usual pillion rider on his motorcycle is Mrs Mo. The machine has front and rear surround sound speakers and heated passenger hand rails, along with four storage areas and a glove box.



Mo and Juliet ready for a spin on the eye-catching three-wheeler.

Mo got his motorcycle licence in 1972 and has had quite a few different makes over the years, including Suzukis, Triumphs and that Rolls Royce of motorcycles, a Honda Gold Wing.

He and Mrs Mo have travelled by motorcycle over both islands of New Zealand, and his current machine is eye-catching and

invites questions from folk when first seen.

Asked, "What's that?" Mo replies, "It's my mobility scooter."

That reply made everybody smile, he said. "I'm getting older, but it's still good to be out and about."

Not only does Mo retain mobility, he does more than 90 percent of the servicing of his machine.



HEAT PUMPS & ELECTRICAL



- ❖ Supply, installation, servicing & repairs of all types and brands of heat pumps.
- ❖ All commercial and residential electrical work: Board rewires, lighting, repair and installation of any of your electrical needs.
- ❖ Vehicle air conditioning re-gas available
- ❖ Registered Electrician

Phone 027 565 6734 ❖ email: rtheatpumps@gmail.com

Are you curious about what AGC Training has to offer in 2024? Don't miss our Campus Open Events over the next 3 weeks! We're here to show you why we are the "Best Kept Secret in Whanganui/Okia."

Agriculture Level 3 Dairy - 40 Weeks
Carpentry Level 3 - 40 Weeks
Animal Care Level 3 - 26 Weeks
Rural Animal Technician Level 5 - 40 Weeks

Education to Employment In-School Support Programs
Driver Licensing Support

Next run of dates -

When: Thur 7th & Sat 9th December

Where: AGC Training Campus - 312 Number 3 Line, Okoia 4582

REGISTER HERE

0800 3488215
info@agctraining.co.nz
www.agctraining.co.nz

Campus Open Event #2



Guided Campus Tours

Interaction with our dedicated staff

Chauffeur-driven tours to our campus sites

- Main Office
- Carpentry Site
- Milking Shed
- Static Machinery Display
- Animals in the House Paddock
- + Sausage Sizzle and Farm-Fresh Milk Sampling

AGC TRAINING FOR INDUSTRY

JOIN US FOR AGC TRAINING'S

OPEN DAYS



Pack the Bus - a great success again

Pack the Bus is an initiative of Property Brokers to bring in gifts for people and animals before Christmas. The call goes out to businesses and schools, and about 30 local businesses and eight schools in Whanganui

plus two in Waverley and Marton, accepted the challenge. The items are packed in a bus until the final day on last Saturday, when they were taken out and given to the selected charities, which were the same as

last year – Birthright, City Mission and the SPCA. Ritesh Verma from the local Property Brokers said the campaign started with a BBQ breakfast at the carpark of MTF Finances, one of our key sponsors at 7am, involv-

ing representatives of the charities. Throughout the week, representatives of Property Brokers, the charities, Pat from MTF and More FM staff went out on the bus collecting. "The schools love it," explains Ritesh, "especially 'Perty' the Mouse that comes with the bus. Instead of asking for a gold coin donation in return for wearing mufti, the schools asked students to bring a food item or a toy for the animals."



Some of the goods donated for Pack the Bus

embraced it," says Ritesh. It is here to stay and will continue to help selected charities at a very important time of the year.

Another key sponsor for a second year is New World, who ran a grocery grab competition. Two weeks prior, they sold tickets for \$2 to go into the draw, with all this money donated to the cause. The lucky person who won the draw had two minutes to run around the shop filling, up their trolley with goods. That person collected \$1600 worth in the time (at 7am before other shoppers were there), and New World matched that amount with goods to give to Pack the Bus.

Last Saturday, they unpacked the bus with the goods filling the whole Property Brokers car park and then helped the charities – Birthright, City Mission and the SPCA – pack them into their vehicles.

"Palmerston North started Pack the Bus, and soon after Whanganui

Bouquet of the Week

Jo nominated Liam Graham from the Wanganui Car Centre for the RCP Bouquet of the Week. She wrote as follows:

"As a female member of the older demographic I had reservations about approaching a person responsible for selling cars, expected I might be, at best, patronised and at worst tolerated.

"None of this is Liam Graham's style, going the extra mile, then some. Patience, connection and commitment are his forte. He patiently shrugged off all my petulant arguments against late model cars, steadily encouraging me to give one a go, until 'I got it'.

"He then tirelessly accepted and disposed of my fears, resentments and delaying tactics to the last.

"Never once did I feel belittled for my ignorance or plain darned stupidity in neglecting some basic thing that meant the car



Liam Graham

wouldn't turn on or off. He is my hero!

"I was not surprised to hear that a successful approach by Age Concern Whanganui regarding car sponsorship culminated in Liam being invited

to become the youngest member of their board. I applaud their wisdom."

The RCP surprised Liam at work with a beautiful bouquet of flowers put together by Nicola and her team at the Flower Room.

SMALL NAME **mini** BIG TASTE

GOURMET CATERING

GOURMET CATERING WANGANUI

From intimate family gatherings to corporate events, our experienced team is ready to take care of all your catering needs. We offer a wide range of delicious menu options, tailored to suit your preferences and dietary requirements.

Contact • Pip Walker • 027 607 6959
www.minigourmet.co.nz

Find us on Facebook

Kinetic Electrical moves to SH3

Kinetic Electrical recently moved to State Highway Three in the large building shared by Roots Brewery, Brown Brothers Bikes and now by Kinetic Electrical. Nick Hall is the general manager.

NZG
New Zealand Glassworks
Te Whare Tūhua o Te Ao

02
DEC
2023

GLASS MARKET

ONE DAY ONLY | SAT 2ND DEC

10AM - 2PM @ 2 RUTLAND ST

NZ GLASS ART • SAMPLES • UNIQUE GIFTS

full info via:
nzglassworks.com

NZG Sponsored by:

GasNet
Connecting communities

2018 TOYOTA PASSO

1.0L, petrol auto, only 30,000kms, body kit, rear parking sensors, remote central locking, traction control, active start/stop, air cond, high seating.



NOW **NOW \$12,995**

2018 SUZUKI X BEE

1.0L, HYBRID auto, only 68,000kms, fog lights, alloys, Isofix, 360 degree camera, reverse sensors, push button start, 5.4L/100kms.



Was \$21,995 **NOW \$19,995**

2019 SUZUKI SWIFT RS

1.0L, turbo, petrol, auto, only 26,000kms, alloys, reverse camera, SatNav, Android Auto/Apple CarPlay, only 5.7L/100kms, turbo, 1 owner.



NOW **NOW \$21,995**

2021 HYUNDAI IONIQ 5

58kwh, fully EV, auto, only 45,000kms, 380km range, reverse camera, alloys, Apple CarPlay / Android Auto, wireless charging.



Was \$56,995 **NOW \$55,995**

2022 SUZUKI IGNIS GLX

1.2L, petrol auto, only 1,800kms, roof rails, only 5.4L/100kms, roof rails, Isofix, SatNav, reverse camera, cruise control, bluetooth, overdrive.



NOW **NOW \$21,995**

2022 HYUNDAI KONA N

2.0L, turbo petrol, 8 speed auto, 280hp, only 15,000kms, precision tuned suspension, 18" alloys, reverse camera, SatNav 3 drive modes.



NOW **NOW \$52,995**

2021 NISSAN NOTE X

1.2L, HYBRID, auto, only 900kms, climate control, body kit, LED headlights, blind spot detectors, parking sensors, E-Power.



Was \$36,995 **NOW \$34,995**

2018 HYUNDAI KONA ELITE

2.0L, petrol, auto, only 48,000kms, keyless start/entry, alloys, wireless charging, reverse camera, bluetooth, heated leather seats, great colour.



Was \$27,995 **NOW \$26,995**

2008 HONDA CR-V

2.4L, petrol, auto, only 155,000kms, alloys, fog lights, body kit, tints, weather shields, keyless entry/start, large boot, priced to sell!



NOW **NOW \$11,995**

2004 HONDA CR-V

2.0L, petrol, auto, only 170,000kms, alloys, body kit, side steps, weather shields, roof rails, fabric trim, large boot, great price!



NOW **NOW \$7,995**

2014 HYUNDAI IX35 GDI

2.0L, petrol, auto, only 141,000kms, reverse camera, alloys, high seating, isofix, cruise control, fog lights, roof rails, leather.



NOW **NOW \$16,995**

2018 JEEP COMPASS

2.4L, petrol, auto, only 34,000kms, alloys, tiptronic, tinted windows, fog lights, keyless entry, 5 star safety, stunning, luxurious & loaded SUV.



Was \$29,995 **NOW \$27,995**

2022 MAZDA CX-3 GSX

2.0L, petrol, auto, only 19,000kms, alloys, reverse camera, daytime running lights, leather, Isofix, SatNav, adaptive cruise control, like new!



NOW **NOW \$32,995**

2022 NISSAN X-TRAIL TI-L

2.5L, petrol, CVT auto, only 3,200kms, 360 deg. camera, safety package, adaptive cruise control, top spec, demonstrator.



Was \$59,995 **NOW \$54,995**

2023 KIA SPORTAGE URBAN LX

2.0L, petrol, auto, only 3,800kms, alloys, Isofix, daytime running lights, digital dash, drive modes, reverse camera, Apple CarPlay/Android auto.



NOW **NOW \$37,995**

2019 SSANGYONG REXTON G4 SPR

2.2L, turbo diesel, auto, 4WD, only 74,000kms, black 20" alloys, 7 seater, leather, reverse camera, apple carplay / android auto, towbar.



NOW **NOW \$39,995**

2023 FORD RANGER XLT

2.0L, Bi turbo diesel, 10 speed auto, 2WD, only 3,600kms, hardlid, towbar, alloys, 10.1" touch screen, reverse camera, keyless entry/start.



NOW **NOW \$56,995**

2021 FORD RANGER WILDTRAK

2.0L, bi-turbo diesel, auto, only 34,000kms, alloys, 8.5L/100kms, side steps, LED daytime lights, sports bar, roll away lid, reverse camera.



NOW **NOW \$52,995**

2022 NISSAN NAVARA ST

2.3L, twin turbo diesel, 7 speed auto, 20" black alloys, only 19,000kms, nudgebar with light bar, black hardlid, flares, reverse camera, SatNav.



NOW **NOW \$49,995**

2020 MITSUBISHI TRITON GLX-R

2.4L, turbo diesel, 6 speed manual, 20" wheels only 10,000kms, black out package, towbar, tonneau cover, sportsbar, reverse camera.



Was \$41,995 **NOW \$39,995**



CASH IN QUICK
ON A NEW QASHQAI
FROM \$39,990 +ORC



Easy
NO DEPOSIT
6.9% P.A.
FINANCE



Lending criteria, terms, conditions and fees apply

Tucson Hybrid
Book a test drive today



FREE ELITE UPGRADE

276 & 330 Victoria Avenue, Wanganui. Phone 06 345 5115



David Jones Motors



Scafit's tikanga (customs and values) are key to business success

Whanganui-Manawatu scaffolding business, Scafit is encouraging other local businesses to consider joining the B-Corp movement for social and environmental good.

Nicki and Dave Crowley, who started Scafit Ltd in 2005, achieved B-Corp certification in August 2022. The company has two branches — Palmerston North and Whanganui, employing over 60 team members.

Scafit's Whanganui Operations Manager, Doug Pokiha has had an integral role in team

culture and the approach to workplace safety at Scafit. The tikanga which he created has been adopted across the entire company and featured strongly in Scafit's B-Corp assessment.

Scafit has taken an innovative whā nau-based approach to team culture to improve safety, employee satisfaction and retention, and it's been driven by their long-time Whanganui Operations Manager, Doug Pokiha.

Some examples of the extra lengths that the business goes to for its staff include free cooked

breakfast every day, free physio, financial assistance with dentists, GPs and specialists appointments and free life insurance.

The B-Corp initiative was founded in 2006 in the United States by three friends who shared a vision to make business as a force for good. The "B" stands for beneficial. This non-profit entity aims to transform the global economy to benefit all people, communities, and the planet by helping companies to balance purpose and profit, while also serving stakeholders.

Today, more than 7,000 companies worldwide have successfully certified as B Corps, but there are approximately 100 certified companies in New Zealand. These include a variety of large and small brands from Kiwibank to a peanut butter company, Fix and Fogg, Allbirds and Eco Store. It also includes Black Pine Architects in Whanganui.

Scafit owner Nicki Crowley says Scafit's focus was to gain the B Corp Certification.

"It aligned so closely with Scafit's values that

we knew it was something Scafit needed to support and to show we care about the community we live and work in."

Doug Pokiha describes the Crowley's approach to people management as rock solid and family-focused and the reason why entire families have worked for Scafit for many years.

"We are like a Band of Brothers. He waka eke noa. We're all in this together."

The Crowleys are encouraging other business owners interested in the movement for social and environmental change to get in touch to find out what's involved.

"It is a lot of work, but the benefits for us, our staff and our wider community are definitely worth it.



Doug Pokiha

New 'five-star' apartments in Johnston & Co building

The Johnston & Co building on Taupō Quay was the Supreme Award winner at the recent Whanganui Regional Heritage Awards. Readers have probably wondered what the inside looks like, especially the apartments on floors two to four.

Thanks to Jess Dwyer of Upstaged, who has not only dressed out the apartments but will be managing them as Airbnb short-term accommodation units on behalf of their Auckland-based owners Dmytro and Marta, the RCP got a preview, and we were impressed.

On the ground floor, the Burrow has its shop facing Taupo Quay, and at the front, facing the river with its outdoor patio, there will be a wine bar.

The entrance to the apartments is on the side, and entry will be by an individual keypad. There is no lift in this heritage building, so you need to be able to climb the stairs.

You will notice the big black beams and pillars in each of the apartments and, in the top floor, the seismic strengthening rods, designed to give an overall modern, industrial look while retaining the original windows. This is reinforced by the open brick walls in apartments on floors two and three,



providing warmth and colour. As Tess says, "These apartments are modelled on New York-style apartments."

The next immediate feature is the views out towards the river. The penthouse apartment on floor four also has a large balcony, complete with outdoor furniture and a BBQ overlooking the river.

The number of bedrooms coincides with each level — two to four. They are large, comfortable looking rooms, but you would want to spend time in the large living spaces linked in with the modern kitchens, which would not be out of place in any modern home.

The kitchens are equipped with all the facil-

ities — small or big — that you could need.

If you really wanted to do some work — there are comfortable study areas as well.

Tess has been dressing up houses in her 'Upstaged' business for almost five years and has notched up 475 homes so far. Having worked on these apartments, Dmytro and Marta "asked me to also manage them as there wasn't yet a STR Property Management company in Whanganui."

As she already has 'Superhost' status with her own Airbnb, she has taken up the challenge. She says she sees "these apartments as offering a 5-star accommodation option in Whanganui, which we've really needed."

MASSIVE ONLINE ART AUCTION

Begins Thursday Nov 30th & closes Sunday Dec 10th.

WHANGANUI photographers and artists represented, include the following surnames Abbott, Burton, Aberhart, Bain, Battarbee, Canning, Cooke, Davies, Drayton, Grehan Hammond, Mitchell-Anyon, Newton, Rimmer, Savage, Wotton and others.



Over 1,500 lots grouped in categories:

- Paintings
- Watercolours
- Prints
- Photographs
- Works on paper

FREE online CATALOGUE now at: www.HeritageArtNZ.com

All works now available to view online. Personal inspection of any art with an estimate of \$250 or more can be made at our offices by arrangement. Call 027 471 2242 to arrange a time.



HERITAGE ART AUCTIONS



Heritage House, 136 St Hill St Whanganui. Tel. 027 471 2242
 Website: www.HeritageArtNZ.com
 Director: Henry Newrick
 Email: Henry@HeritageArtNZ.com
 Mail: P.O. Box 4085 Whanganui 4541

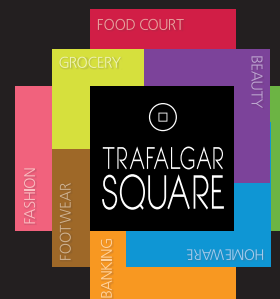
Individual store hours may vary, if you are visiting a specific store, we recommend you call or visit their website or social channels beforehand.

DAY DATE		SPECIALTY STORES	COUNTDOWN	THE WAREHOUSE
Tuesday	5 December 2023	9am - 5.30pm	7am - 10pm	8am - 10pm
Wednesday	6 December 2023	9am - 5.30pm	7am - 10pm	8am - 10pm
Thursday	7 December 2023	9am - 5.30pm	7am - 10pm	8am - 10pm
Friday	8 December 2023	9am - 5.30pm	7am - 10pm	8am - 10pm
Saturday	9 December 2023	9am - 4pm	7am - 10pm	8am - 10pm
Sunday	10 December 2023	10am - 4pm	7am - 10pm	8am - 10pm
Monday	11 December 2023	9am - 5.30pm	7am - 10pm	8am - 10pm
Tuesday	12 December 2023	9am - 5.30pm	7am - 10pm	8am - 10pm
Wednesday	13 December 2023	9am - 5.30pm	7am - 10pm	8am - 10pm
Thursday	14 December 2023	9am - 5.30pm	7am - 10pm	8am - 10pm
Friday	15 December 2023	9am - 5.30pm	7am - 10pm	8am - 10pm
Saturday	16 December 2023	9am - 5.30pm	7am - 10pm	8am - 10pm
Sunday	17 December 2023	9am - 4.30pm	7am - 10pm	8am - 10pm
Monday	18 December 2023	9am - 5.30pm	7am - 10pm	8am - 10pm
Tuesday	19 December 2023	9am - 5.30pm	7am - 10pm	8am - 10pm
Wednesday	20 December 2023	9am - 7pm	7am - 10pm	8am - 10pm
Thursday	21 December 2023	9am - 7pm	7am - 10pm	8am - 10pm
Friday	22 December 2023	9am - 7pm	7am - 10pm	8am - 10pm
Saturday	23 December 2023	9am - 5.30pm	7am - 10pm	8am - 10pm
Sunday	24 December 2023	9am - 5pm	7am - 10pm	7am - 9pm
Monday	25 December 2023	CLOSED	CLOSED	CLOSED
Tuesday	26 December 2023	10am - 4pm	9am - 6pm	8am - 9pm
Wednesday	27 December 2023	9am - 5.30pm	7am - 10pm	8am - 9pm
Thursday	28 December 2023	9am - 5.30pm	7am - 10pm	8am - 9pm
Friday	29 December 2023	9am - 5.30pm	7am - 10pm	8am - 9pm
Saturday	30 December 2023	9am - 4.00pm	7am - 10pm	8am - 9pm
Sunday	31 December 2023	10am - 4pm	7am - 10pm	8am - 9pm
Monday	1 January 2024	Optional	9am - 6pm	10am - 8pm
Tuesday	2 January 2024	10am - 4pm	8am - 8pm	8am - 9pm
Wednesday	3 January 2024	9am - 5.30pm	7am - 10pm	8am - 9pm

THE WAREHOUSE begins 10pm closing from Wednesday 29 November

Trafalgar Square Trading Hours

100 Taupo Quay, Wanganui | Phone 348 0314 | www.trafalgarsquare.co.nz



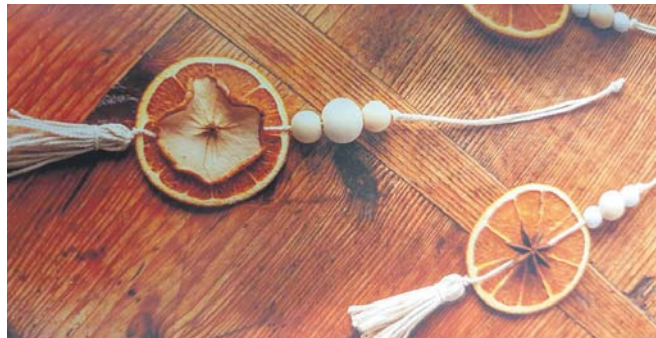


Christmas News



Make your own Christmas decorations at Tea and Topics

The final season for an iconic Christmas-themed destination



An example of crafting

Gonville Library is proud to present our next Tea and Topics talk with Iva Leonard on 'Arts & Crafts for Grown-ups.' Iva has been hosting this monthly craft programme at the Davis Library. The Gonville event will be on Thursday, 14 December.

At the Davis, the workshops run for 90 minutes on the first Wednesday of each month. Iva works with reusable and natural materials to create easy, practical and stylish craft. Her classes are free, fun, easy and eco-friendly with all materials provided.

Iva is excited to be part of Tea and Topics and Crafting in Gonville Library, with a focus on Christmas crafts, as she was a Gonville Library Team member for many years before taking up a new role in the Davis Library. Iva has an Arts degree, with art and

craft being a big part of her life and running through her family line. Iva is crafting in her spare time and, on occasion, has a stall at River Market.

As Iva explains herself, she believes that being creative improves your mental health and reduces stress and anxiety levels. It also gives you a sense of accomplishment and will help you meet new friends who share similar interests, and at the end of it will you have a neat art or craft to take home with you.

One of her favourite quotes is: "You can't use up creativity. The more you use, the more you have." — Maya Angelou

Tea and Topics will have its usual format, with a hot drink and a biscuit being served between 10am and 10.30am. The crafting will start at 10.30am, and there will be ample opportunity to ask questions or share stories.

Jenny Greener has been collecting Christmas decorations for more than a quarter of a century. What started as a humble display in Jenny Greener's home in Marton has become a significant attraction for young and old to experience the sparkle and magic of the season at Granny's Christmas Grotto: a building dedicated to all things Christmas located at 1 Main Street, Marton. Given the decades of devotion applied to create this wonderland, it's with a sad heart that Jenny is retiring, and this is the last year that the Granny's Christmas Grotto will be open.

Jenny Greener expresses her heartfelt gratitude to the countless visitors, family, friends, volunteers, supporters, and fellow Christmas enthusiasts who have shared

in the joy and wonder of Granny's Christmas Grotto over the years.

Granny's Grotto will be open on Monday to Thursday from 7pm to 10pm and on Friday to Sunday, from 12 noon to 5pm, 1-23 December 2023. The cost is \$5 for adults and \$3 for children. The tour takes about 30 minutes.

To stay updated on the latest news, visit Granny's Christmas Grotto Facebook Page.




LAST SEASON EVER!
1st - 23rd DECEMBER 2023

MON - THURS 7pm - 10pm
FRI - SUN 12pm - 5pm

ENTRY FEE \$5 ADULTS - \$3 CHILDREN (14 AND UNDER)

- Children 14 and under must be accompanied by an adult
 - One adult per 4 children
- No prams, strollers or mobility scooters allowed
 - No food or drink allowed
 - Children must be supervised at all times

EFTPOS AVAILABLE
NO CREDIT CARD FACILITY

P. 027 277 5005 E. greener.marton@me.com
f GrannysChristmasGrotto

THE GIVING TREE 2023

The Salvation Army, Whanganui

Our Community Ministries Christmas response enables us to supply a Christmas meal and gifts to whānau who have engaged with our services throughout the year. We're supporting 40 families in our community this Christmas.

The Giving Tree invites people to share in the generosity of the season by gifting a toy for children or making a donation toward food costs for meal hampers.



Te Ope Whakaora

Gifts can be dropped off at:

Salvation Army Church Office @ 6 Indus Street
(Monday - Friday; 9.30am - 12pm)

Family Store located @ Victoria Avenue
During Shop Hours, Monday - Saturday, 9am - 5.30pm

River City Press @ 52 Ingestre Street
(Monday - Friday; 9am - 5pm)

Please drop gifts in by December 15

The Giving Tree will be at Trafalgar Square Wed 6th, Fri 8th, Mon 11th - 11am-2pm

We appreciate your support at this time of year.

For more information contact our Church office

06 345 2343



Christmas News



Hakeke Community Centre running Shoe Box appeal again

The appeal is out to businesses and individuals to fill shoeboxes for the annual Christmas Shoe Box Appeal, which is being organised in Whanganui

by the Hakeke Street Community Centre and supported by the nearby Love and Learn Early Childhood Centre.

The idea behind the Shoe Box appeal is to

fill up a shoe box with \$50 worth of gifts to give out to those whanau in the community who could use a little extra whi this year. If you can help, please make

contact with the team at Hakeke Street Community Centre.

Last year was the first time it was run here, and Maree Butturini from Love and Learn says, “

We were able to distribute 101 boxes. This year, they are hoping for 300 boxes.

People can nominate other people who are in need and would benefit, but Maree says, “We will also be asking community organisations to nominate recipients.” They are keen to collaborate and partner with other community organisations.



Shoeboxes

Compassionate Friends Remembrance Ceremony on Saturday

Parents who have had a child die too soon, from baby loss, illness, accident, suicide or murder, who have died at any age, at any time – recently or long ago – are invited to join us at Aramoho Cemetery on Saturday, 2nd December, at 10 am.

We are The Compassionate Friends Whanganui. Bereaved Parents Grief Support. We will be placing decorations and mementoes at the two trees sheltering the Children’s Area and the Stillborn Area.

Bring Christmas tree decorations, wind chimes, fresh flower petals or any special memento of your loved one.

Directions: Take the first left at the Cemetery, McNeill St.

* Children’s Area Block P (take 3rd right at Block O, then to Block P)

* Stillborn Area: turn into McNeill St, go to the far end and turn left

By visiting these places where many of our children



rest, we can leave something of beauty and peace there.

Bereaved parents, siblings and family have a hole in their lives forever, felt especially at Christmas. You need not walk alone.

Visit our website www.thecompassionatefriends.org.nz. Contact Keren 3443345

Geoff’s Model Shop celebrating 10 years



Geoff’s Model Shop

Geoff Chowles came to Whanganui from Auckland in 2013 and set up his model shop at 10 Kitchener Street in Whanganui East. This Saturday, he is celebrating ten years since the shop opened by having a bring and buy as well as a sausage sizzle from 10am to 2pm.

He says, “I have been building models since childhood,” it would be difficult to find anyone in Whanganui with his extensive experience and knowledge.

The Model Shop specialises in model railway equipment, boats, plastic kit sets, components for making dioramas, and materials to build models from scratch.

The shop appeals to all age groups, from kids with their parents to retired people wanting to develop their hobbies – a little bit like Geoff himself.

The shop is open on

Wednesdays to Fridays from 10am to 4pm and on Saturdays from 10am to 2pm. He can be contacted on 343 1520, and

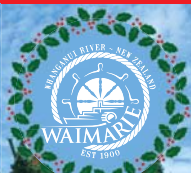
at jollyjack@xtra.com. His website is www.geoffmodelshop.com, and you’ll find him on Facebook as well.



Inviting all past & present customers to a **Bring & Buy** & sausage sizzle.

SATURDAY 2nd DECEMBER 10am to 2pm

10 Kitchener Street, Whanganui East
WHANGANUI
Phone 06 343 1520



Santa Cruise

ON BOARD THE WAIMARIE

Bookings at:

WWW.WAIMARIE.CO.NZ
INFO@WAIMARIE.CO.NZ

06 347 1863
0800 STEAMER

Join us for a 2-hour cruise with Santa paying us a visit somewhere along the way with a sackload of gifts for the children on board.

We would like to invite you and your family to our **2023 Remembrance Service**

Sunday 3rd December at 2pm

Cleveland Chapel 179 Ingestre Street Whanganui

RSVP | Phone: (06) 345 5522



Property Brokers are principal sponsor for Whanganui Vintage Weekend 2024

We are thrilled to announce that Property Brokers has signed on as the Principal Sponsor of the Whanganui Vintage Weekend 2024!

Property Brokers is a leading real estate company with a strong presence in Whanganui and the surrounding region. They are committed to giving back to the communities they serve, and we are grateful for their support of our event.

Thanks to the Property Brokers' sponsorship, we will be able to offer an even more spectacular Whanganui Vintage Weekend experience to our visitors in 2024. We are planning a wide range of exciting activities and events, including vintage fashion contests, heritage exhibitions, live music, and more.

We are confident that the Whanganui Vintage Weekend will be a major highlight of the Whanganui calendar in 2024.

Bridge Club results

Whanganui Bridge Club Results Week ending 26 November

Monday Christmas Pairs: N/S: 1. R Bartrum, G Keely 57.51 2. R Bowie M Dawson 57.21 3. H Jarrett S Brotherston 56.54 4. D Pech J Smith 55.17

E/W: 1. M Ewing, B Annear 56.61 2. C Collins, P McDonald 55.25 3. L McLay, S Skill 54.49 4. S Kuehne, K Coombe 53.82

Tuesday Christmas Pairs: N/S: 1. P Paterson C Pepperell 59.04 2. P MacLachlan, W Arathoon 54.72 3. B Collins, N Kennedy 52.51 4. S Fonseka, N Parker 50.29 **E/W:** 1. D Newman, S Dempsey 59.14 2. D Nightingale, M Voss 58.46 3. K & P Verhoeck 55.24 4. S Watson R Austin 54.77

Wednesday Christmas Pairs: N/S: 1. M Hicks, L Eyles 57.47 2. A Williams, L Reuters 57.14 3. L Lilly, L Raine 49.14 4. R Terrey, R Bowie 48.15 **E/W:** 1. A & W Hodges 60.19 2. R Campbell, W Pedley 57.41 3. K & S Rainey 54.23 4. J Coxon, M Dawson 52.78

Wednesday Social: N/S: 1. A Thirtle, J Firmin-Jones 68.52 **E/W:** 1. N Kennedy, C Harding 62.04

Friday Social: N/S: 1. B Collins, D Price 66.52 2. L Goodrich L McLay 62.05 3. Wally Duncan, C Pepperell 58.18 4. P Williams, J Rapson 57.89 5. S Cvitanovich, J Firmin-Jones 56.10 6. J Minchington, B Annear 54.76

E/W: 1. R Sigley, M Schumacher 60.58 2. N Kennedy, B Perkins 58.10 3. S Watson, T Watson 56.18 4. J Botting, D Ewing 54.95 5. N Bartrum, M Brewer 54.40 5. R Sigley, J Dodds 6. W Pedley, P Godderidge 54.12 6. H Jarrett, B Perkins 53.72.

and we are grateful to Property Brokers for their support in making this possible.

This event would also not be possible without the financial support of the Whanganui District

Council and the Whanganui Community Trust and these event sponsors.

1. Arthur Leedstown Trust
2. Emmett Construction Ltd
3. GDM Group

4. Pacific Helmets NZ Ltd

5. Tasman Tanning Company Limited
6. Dempsey and Forrest Funeral Services Limited
7. Armstrong Barton
8. Crowley Waugh

9. Horsley Christie 10. PKF Doyle & Associates The Accountants Ltd

We are grateful for the support of all of our sponsors, and we look forward to working with them to

make the Whanganui Vintage Weekend 2024 a resounding success!

Mark Your Calendars
The Whanganui Vintage Weekend will be held from Friday, January 19th to Monday, January 22nd,

2024. We encourage you to mark your calendars and start planning your visit today!

Check up on the event details on www.whanganuivintageweekend.com



Wanganui Male Choir (Inc)

Presents its

125th Jubilee Concert

Night & Day

at the Central Baptist Church
285 Wicksteed Street on
Saturday 2nd December 2023 at 2.30pm



125th Jubilee with "Night and Day" concert this Saturday

The Whanganui Male Choir are celebrating their 125th jubilee and 283rd performance with their "Night and Day" concert with guest choir, Wellington Male Voice Choir.

The Whanganui Male Choir, currently with twenty choristers, performed its first concert on 22nd September 1898, and this December is celebrating its 125th Jubilee. The choir has never been in recess during this time, and over the preceding 125 years has performed at least twice a year [except for Covid-19 affected 2020] plus one or two extra concerts in between. It is now the third-oldest performing choir within New Zealand.

David Tipi continues his Music Director role with the choir, and, for this concert is supported by the very accomplished Lisa Boessenkool as Accompanist. Watch out for his two solos, 'Regesa A Mi' and 'Fields of Gold', after which he will be joined by good friend William Pati singing the duet 'Time To Say Goodbye'.

The main guest artist will be the Wellington Male Voice Choir who have sung with the Whanganui Male Choir twice before. They are in their 62nd year. Wellington Male Voice Choir are led by Mark Stamper, who hails from South Carolina, USA. He is well qualified as a choral director and in addition has a Bachelor of Music Degree in Piano Performance. Mark arrived in New Zealand in 2015 and was appointed Musical Director in 2019. The Accompanist for Wellington Male Voice Choir is Liam Fury LTCL [Distinction], a



Whanganui Male Choir members - photo taken earlier this year

freelance piano teacher and musician.

The concert promises to provide a varied repertoire of songs. Whanganui Male Choir will open the concert with four songs - Oh, What A Beautiful Morning, Banana Boat Song, Get Me To The Church On Time and Hine E Hine. This will be followed by the Wellington Male Voice Choir singing Festive Alleluia, Red Is The Rose, For The Fallen and The Awakening. Whanganui will return with another five songs, after David Tipi and William Pati have sung their three songs, followed by Wellington with four Christmas-themed songs. The two choirs will round out the concert by joining together and singing 'O Come All Ye Faithful'.

The concert has been titled "Night & Day" the range of song titles to be performed.

Saturday 2nd December 2023, 2.30pm at Central Baptist Church, 285 Wicksteed Street.

Wanganui Male Choir (Inc)



Presents its

125th Jubilee Concert

Concert #283

Sponsored by Monaghans Barbershop

Night & Day

at the Central Baptist Church
285 Wicksteed Street
on Saturday 2nd December 2023 at 2.30pm

• • •

Musical Director:
David Tipi

Accompanist:
Lisa Boessenkool

Guest Artists

Wellington Male Voice Choir

David Tipi

Door Sales: Adults \$20.00, Secondary & Primary Students free



CELEBRATING

100 YEARS OF PRINT

IN WHANGANUI



LET'S IMPRESS LOCAL EXPERTS

QUICK DESIGN SMART PRINT EASY COPY CENTRE



H&A PRINT

7-9 Purnell Street, Whanganui

WWW.HAPRINT.COM | 06 345 3145 | Facebook | Instagram | Twitter

Te Kahu Pairuri
ki Whanganui



hospice
whanganui

Tree of Remembrance at Farmers Whanganui



Hospice Whanganui and Farmers staff bless Christmas Tree of Remembrance

From Thursday, 16 November, through to Christmas Eve, all Farmer's stores across Aotearoa will raise funds for their local hospice service.

This is the 10th year that Farmers have supported hospices nationally in the lead-up to Christmas, with customers donating nearly \$7 million over that time, helping keep hospice services free of charge.

The tree is supplied by Farmers and stands tall in the foyer of the store.

There are two ways

Whanganui customers can support our local Hospice: by purchasing a limited-edition Hospice bauble, in-store or online, or by making a donation in-store to the tree of remembrance.

The beautiful glass baubles cost \$15.99 and have become collectables, says Renee, with people making sure they purchase one each year. Each year they feature a different symbol. Last year it was the star cluster of Matariki. This year's 'Pohutukawa'

bauble reminds us of the significance of the Pohutukawa design.

"Tena Koe Pohutukawa Aotearoa Rakau Kirihemete

You are the beginning and the end of the journey of life

Pohutukawa taonga of old, you care for the spirit of those who have passed away. Oh star of Matariki.

Pohutukawa – we remember them, we reflect on them and we call them by name.

May this special Pohutukawa Christmas bauble be given as a gift of hope, faith

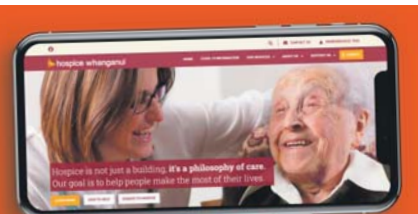
and especially love as we remember them."

- Emily Temepo, Hospice Kaiwhina

For a donation, you can also get a card to write a message to your loved one and place it on the tree. Renae Kilmister from Hospice Whanganui advises, "Those messages will be collected early next year, and Hospice Whanganui will have



Hospice and Farmers representatives next to the Remembrance Tree.



SUPPORTING HOSPICE & THE WIDER COMMUNITY WITH STUNNING, FAST, RESPONSIVE WEBSITES.
Contact us today for a free consultation.

Liquid Edge
WEBSITES | MARKETING | GRAPHIC DESIGN
06 345 7267
studio@liquidedge.co.nz
www.liquidedge.co.nz

PKF Doyle & Associates
The Accountants
WHANGANUI - OHAKUNE - TURANGI
Proudly supporting
Te Kahu Pairuri ki Whanganui
hospice
whanganui
www.pkfdoyles.co.nz

a ceremonial burning of them with the ashes sprinkled under our Remembrance Tree." The tree is always popular, but many people just donate and do not leave a message. The Remembrance Christmas tree normally brings in over \$10,000 each year for Whanganui Hospice.

Jackson's Flooring Design
Service and Excellence You Can Trust!
Pleased to support **Hospice Whanganui**
Corner of Wilson & Ridgway Streets
P 06 345 9059 • whanganui@flooringdesign.co.nz

dalglish ARCHITECTS
Proud to support Hospice Whanganui with award winning architecture
06 347 9401
dalglisharchitects.co.nz

RICHARD GEDYE LTD
PAINTING & DECORATING
Est. 1998
Proud to support **Hospice Whanganui**
Qualified Tradesmen
Work Guaranteed
Painting & Paperhanging
Interior & Exterior
Domestic & Commercial
Wanganui Owned & Operated
MOBILE 0274 407 169
PHONE 06 348 5543
EMAIL richard@richardgedye.co.nz
PO Box 7137 Wanganui
www.richardgedye.co.nz

Pleased to support **Hospice Whanganui**
ROB O'KEEFE
JOINERY
Joinery | Kitchens | Stairs
Doors | Windows
Commercial
06 344 5040 | okjoiner.co.nz
368 Heads Road, Wanganui



The Rotary Club of Whanganui North

Carols by Candlelight

Sunday 10 December, 5pm for food trucks and 6pm for entertainment at the Punchbowl, Virginia Lake

Come and celebrate the Christmas season at Carols by Candlelight next month

The Rotary Club of Whanganui North is holding its annual Carols by Candlelight on Sunday, December 10 at the punchbowl, Virginia Lake.

The event starts at 5pm when the Food Trucks will set up in the birdcage carpark and be open for business. The trucks will include Fried Up Pizza, Mrs Bean, Ice Queen and the Foxton Fish and Chippery. However, you are welcome to come with a picnic, along with a rug, some jackets, just in case, and perhaps some low-slung chairs. No alcohol, please.

At 6pm the entertainment will begin with a performance by Te Reanga Morehu O Ratana. Other performers, more or less in order, include:

- Ella Rose singing a number of songs, some with a Christmas theme, others not, and sometimes with the Community Choir and with Brass Whanganui.
- Sometime after

7pm MC Tina Wright will introduce Father Christmas and the Lolly Scramble with Brass Whanganui playing 'Santa Claus is Coming to Town.'

- The young award winning Country & Western singer, Sophie Toyne
- Am dram singers performing excerpts from their upcoming show 'Sweeney Todd' as well as a couple of songs from their very successful version of Phantom of the Opera.
- After Am dram sings Joy to the World and Silent Night, all the performers and the crowd will join in singing 'We Wish You a Merry Christmas' and the evening will finish around 9pm.

Starburst Rotary will be offering parking at the nearby St Johns Hill School for \$2 with the proceeds going to the school's PTA.

There is a cost of a \$2 coin to come but this covers costs such a carol book, candle and holder.

The candles will be lit together at 7.45pm.

The Rotary Club of Whanganui is very proud to organise this annual event as they done for over 40 years. It is actually the 74th Carols by Candlelight in Whanganui, with the first one at Cooks Gardens in 1949. It was attended by 4,000 people. Two flares were lit by running singers, announcing the general lighting of the candles.

Sponsors for such an event are vital, and the Rotary Club of Whanganui North is grateful to the following businesses for their help:

- Alarm Watch
- Kai Iwi Beach Holiday Park
- Tait Pearce Accountants
- Pru Anderson Accountants
- Hogan OsteoPlus
- Harcourts

If the weather is problematic, the event is likely to be cancelled the day before. If in doubt, go to the Facebook page <https://rb.gy/ptqrzf>.



WESTMERE SCHOOL

Proud to support
CAROLS BY CANDLELIGHT

Piki Ake Te Poutama
Building Future Leaders Today

Phone 345 6919
cnr Francis & Rapanui Rd, Whanganui



WANGANUI COLLISION CENTRE

- Qualified Panel & Paint Specialists
- Loan cars available
- All insurance & private work
- Groom service available

Phone 06 345 4272
18 Wilson Street
Wanganui
wanganuicollision@xtra.co.nz

Proud to support CAROLS by CANDLELIGHT

BELVERDALE HOSPITAL LTD

WE OFFER SPECIALIST SERVICES IN
GENERAL, ORTHOPAEDIC, E.N.T,
ENDOSCOPIC & LAPAROSCOPIC SURGERY,
WEIGHT LOSS SURGERY &
GYNECOLOGICAL SURGERY

Proud to support
CAROLS BY CANDLELIGHT

5 Campbell Street, Wanganui.
Ph 348 1182, Fax 348 1183

Wishing you all a
Merry Christmas

St Johns PHARMACY
"the pharmacy at the top of the hill"

13 Great North Road, Wanganui
Ph (06) 345 7800, Fax (06) 347 8114
Sue Gardner & Jenny King M.P.S.



INTERNATIONAL DAY OF PERSONS WITH DISABILITIES

3 December 2023

- The types of disabilities -

There are many different types and definitions of disabilities but they can be in seven different categories.

1 - Mobility and Physical Impairments

These can include:
Upper and lower limb(s) disabilities
Manual dexterity
Disability in co-ordination with different organs of the body

Disability in mobility can be either an in-born or acquired with age problem. It could also be the effect of a disease. People who have a broken bone also fall into this category of disability.

2 - Spinal Cord Disability

Spinal cord injury can sometimes lead to lifelong disabilities. This kind of injury mostly occurs due to severe accidents. In some cases spinal cord disability can be a birth

defect.

3 - Head Injuries - Brain Disability

A disability in the brain occurs due to a brain injury. There are two types of brain injuries:

- Acquired Brain Injury
- Traumatic Brain Injury

ABI is not a hereditary type defect but is the degeneration that occurs after birth. The causes of such cases of injury are many and are mainly because of external forces applied to the body parts. TBI results in emotional dysfunctioning and behavioural disturbance.

4 - Vision Disability

This includes minor to various serious vision disability or impairments. Some of the common vision impairment includes scratched cornea, scratches on the sclera, diabetes related

eye conditions, dry eyes and corneal graft.

5 - Hearing Disability

Hearing disabilities includes people that are completely or partially deaf, (deaf is the politically correct term for a person with hearing impairment). Deafness can be evident at birth or occur later in life from several biologic causes, for example meningitis can damage the auditory nerve or the cochlea.

6 - Cognitive or Learning Disabilities

Cognitive Disabilities are a kind of impairment present in people who are suffering from dyslexia and various other learning difficulties and includes speech disorders.

7 - Psychological Disorders

Affective Disorders: Disorders of mood or feeling states either short or long term. Mental Health Impairment is the term used to describe people who have experienced psychiatric problems or illness such as:

- Personality Disorders.

• Schizophrenia: A mental disorder characterized by disturbances of thinking, mood and behaviour.

8 - Invisible Disabilities

Invisible Disabilities are disabilities that are not immediately apparent to others.

It is estimated that 10% of people in the U.S. have a medical condition considered a type of invisible disability.



Driving Miss Daisy Whanganui

Driving Miss Daisy is NZ's number 1 friendly and reliable companion driving service.

Driving Miss Daisy supports you with:

- Appointments, shopping and Social
- Caring extra support as needed
- Wheelchair accessibility
- Out of town trips

ACC registered vendor.
Total Mobility Cards accepted.

Bookings essential.
Ph: (06) 347 9100
Mob: 021 503 313
Email: whanganui@drivingmissdaisy.co.nz

Your Way | Kia Roha

Individually designed supports for disabled people.

Proud to support International Day of Persons with Disabilities

244 Victoria Avenue | Whanganui
0800 758 700
www.yourwaykiaroha.nz

Stroke Wanganui

Enquiries welcome.

Stroke Wanganui President
Judith Massey
Phone 348 9554

Secretary/Treasurer
Sharon Winduss
Phone 027 294 9897

Field Officer **Diane MacDonald**
Phone 028 8500 0470 or 345 1370

Proudly supporting International Day of Persons with Disabilities

Mobility Equipment Wanganui
Mobility Scooters
Locally owned and operated

Local sales, service, repair & rental

- Powerchairs
- Ramps
- Wheelchairs
- Walkers

Stockists of **Goldfern** Mobility equipment

Call Graeme
06 347 6927 or **021 119 5118**
graemekt1@gmail.com

Founders Care Trust
Papahauora Tautoko

"Quality Residential Care for People with Intellectual Disability"

Proud to support International Day of Persons with Disabilities

Interested in working with people with disabilities?
Please contact the Manager
Wendy Kopura 06 345 5663
Email: support@founderscare.org.nz

Sommerville Disability Support Services
Encouraging children and young adults to reach their full potential.

Sommerville works with their clients to develop services that assist people to achieve the lifestyle of their choice in the community

Family Support - Vocational/Life Skills
Community Participation - Transition Service
Total Mobility Taxi Assessments

Disability Parking Identification Permits
Wanganui Autism Library

Sommerville Disability Support Services are proud to support International Day of Persons with Disabilities

Phone 345 0566 Fax 345 0567 (0508 787 767)
45 Campbell Street, PO Box 540 Wanganui
Email: melanie@sommerville.org.nz
www.sommerville.org.nz



INTERNATIONAL DAY OF PERSONS WITH DISABILITIES

3 December 2023

Matt and Vicky Gilmore of Barber Town moving on

Matt Gilmore set up Barber Town originally with Uriah Wallace in the Arcade of 136 Victoria Ave 20 years ago, and on Saturday, Matt and Vicky will be leaving the business to pursue other adventures. The location was originally a curtain shop linked to a fabric shop. Now it is well-known barber shop with many regular customers.



Matt and Vicky Gilmore

There are now five barbers, including Matt, and over the years, Matt has trained many new barbers. They have seen trends come and go, with some returning, whether it has been mohawks, mullets or just long hair. "As a barber, you just go with the flow."

The highlight of the job and the business "has been the different people you meet, get to know, says Matt. "I have been cutting their hair since I was 17, and it will be hard saying goodbye. It has never been boring, with changes in hairstyles and meeting different people. Over this time we have had three kids as well."

There have been ups and downs, including economic downturns, as was the

case in 2008/9, but it was relatively smooth during Covid.

Barber Town and its staff will continue under new ownership. It is open Tuesday to Saturday with the hours: Thursday 9am to 7pm, Saturday 9am to 1pm and the other days 9am to 5pm.

Matt and Vicky are thankful for the continued support of the public and to the staff, present and past.

What is International Day of Persons with Disabilities?

The International Day of Persons with Disabilities falls on 3 December each year, with the aim of promoting empowerment and helping to create real opportunities for people with disabilities. The estimated one billion people living with disabilities worldwide face many barriers to inclusion in many key aspects of society. As a result, people with disabilities do not enjoy access to society on an equal basis with others, which includes areas of transportation, employment and education as well as social and political participation.

The right to participate in public life is essential to create stable democracies, active citizenship and reduce inequalities in society.

The theme for 2023 is 'United in action to rescue and achieve the Sustainable Development Goals (SDGs) for, with and by persons with disabilities. The 2023 theme for International Day of Persons with Disabilities asks everyone to work together to make the world better and fairer for people with disability.

The annual observance of the International Day of Disabled Persons was proclaimed in 1992 by the United Nations General Assembly.

The United Nations has also set out the 2030 Agenda for Sustainable Development, pledging to "leave no one behind."

This is a fundamental principle which is applicable to all three aspects of the work of the UN – Development, Human Rights and Peace and security.

The United Nations has also launched its first ever flagship report on disability and development, which provides evidence based for disability-inclusive policy-making, implementation and monitoring and evaluation of an inclusive, accessible and sustainable global development agenda.



Workbridge

Where abilities equal employment

**Looking for Staff?
Looking for Work?**

Workbridge provide a free nationwide employment service delivering inclusive, successful employment opportunities. Our experience, passion, resources and training make us the best choice to support jobseekers on their employment journey or employers with their business needs.

Contact us on **0508 858 858**
or via our website
www.workbridge.co.nz



Proud to support
**International Day of
Persons with Disabilities**

396A Victoria Avenue,
Whanganui.
Ph (06) 348 0089



**WHANGANUI
HIGH SCHOOL**

www.whanganuihigh.school.nz

The Te Atawhai Unit at WHS provides a safe, caring, challenging and supportive environment catering for the individual educational needs of students with moderate to severe intellectual or physical disabilities.

This is achieved through a multi-sensory curriculum and adapted programmes to enable students to reach their full potential.

Purnell St, Whanganui • Phone 06 349 0178

wanganui enterprises **fivestar**

Our Story

We provide employment and training for people living with disabilities. With the opportunity to gain life skills, industry training and rehabilitation in a supportive environment.

Our service provides for people aged 16+ with physical, intellectual & mental health challenges. Our principle aim is to get people ready for or back to work in "Open Employment".

Our Programme

Work Preparation, Support and Motivation.

Our programme delivers tailored work preparation outcomes aimed at providing confidence and motivation that supports the employment aspirations for people who have a health condition, injury or disability.

We run four courses per year, each lasting 12 weeks, in a workshop and factory setting.

Courses are free to eligible candidates.

Phone **06 343 7053**

mail@fivestar.org.nz www.fivestar.org.nz

Changing Lives through employment & training

Proud to support
**International Day of
Persons with Disabilities**



Whanganui Unique
Children's Support Group

For further information contact
Peter Smith - cell **022 494 8274**
or email: petergs@infogen.net.nz
Or Join our Facebook Group



"Personal bests" of five artists work in current exhibition

The Optiv101 MVP is an annual exhibition by artists from the Optiv101 Fine Arts and Multimedia Studios that celebrates the exhibiting and production by the studios' artists over the previous 12 months.

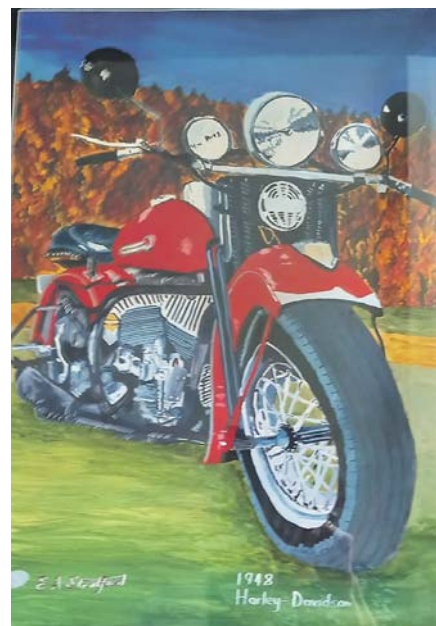
The exhibition is a review of "Personal Bests", with five studio artists opting to review their works from the year. It also includes new work, as the aim of MVP exhibitions is to encourage the studio artists to develop current oeuvres and themes.

Ewen Stratford is highlighting his well-known motif of the Red Band gumboot alongside his recent work of flowers. To complement his vintage truck and automobile theme that he has developed, he has ventured into classic motorcycles.

Sandra Brumby used a visit to Mexico to inspire her work this year. The sojourn enabled her to compare and contrast New Zealand's society with the exotica of Central America. You will be surprised by her findings.

Esther Topfer examines language and understanding in a series of works called Stream of Consciousness, where personal expression and meaning get entangled and retranslated in the process of interpretation by others.

Aaron Potaka submits a series of works called The Hunt, using the rich col-



Ewen Stratford, 1948 Harley –Davidson, 2023, Watercolour on Paper

our of the equestrian sport and placing the settings in familiar local landscapes such as the Rangitikei, Parapara and Whanganui.

Robert Pech is Optiv101's emerging artist who is painting in acrylics and oils, which he used to love as a youngster. He looks at nature in all its forms, and capturing it from new perspectives continues to be his passion and challenge.

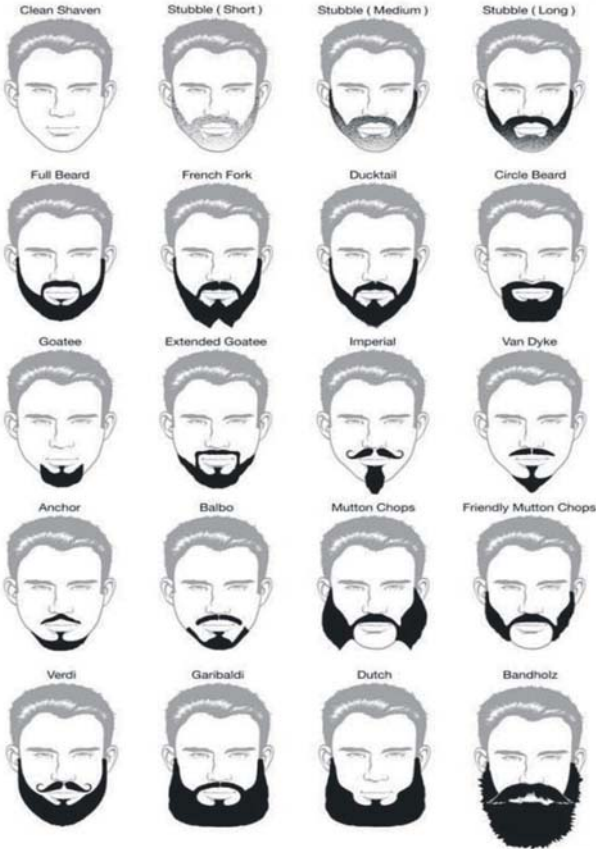
Not only is the exhibition a celebration, but

ARE YOU READY FOR A BIG, HAIRY CHALLENGE?

Raising awareness for bowel cancer.



Grow a beard to raise funds for Bowel Cancer NZ



During December alone 250 of us will be diagnosed with bowel cancer and 100 will die from this disease - that is something to get serious about. So Bowel Cancer New Zealand is encouraging men to grow a beard as a quirky way to start conversations about bowel cancer and to raise funds for awareness, education, research and to support people living with bowel cancer. The challenge is from December 1 to 31.

And as for ladies... okay, not so easy to grow a beard. Why not organise a Decembeard event? Have fun and raise funds and help spread the word. You could encourage your fathers, brothers, husbands, boyfriends, partners and male friends to ditch their razors and grow a beard.

Bowel cancer is the second highest cause of cancer death in New Zealand. It kills as many New Zealanders as breast and prostate cancer combined, and it

can affect anyone at any age. But it is treatable - and beatable - if it's detected early enough.

Being aware of the symptoms is the first step you can take to prevent bowel cancer. Symptoms may come and go so see your GP and don't wait if you have any of these concerns, no matter what age you are.

Symptoms may include:

- Bleeding from the bottom or seeing blood in the toilet after a bowel motion;
- Change of bowel motions over several weeks without returning to normal;
- Persistent or periodic severe pain in the abdomen;

- A lump or mass in the abdomen;
- Tiredness and loss of weight for no particular reason;
- Anaemia.

Those who have a family history of bowel cancer or want to do regular checks can talk to their GP and if you have symptoms, we advise seeing your GP immediately. More information on bowel cancer and Bowel Cancer NZ can be found at www.bowelcancernz.org.nz

If you are concerned about trying to grow a beard think about the following:

- Around 55% of males worldwide sport some sort of facial hair

- the average man has 30,000 whiskers on his face.

- In your lifetime, you'll spend around 3350 hours shaving.
- Whiskers grow at around 5.5 inches per year - if you never shaved, your beard would grow to 27.5 feet on average.
- The longest beard ever was believed to belong to Hans Langseth of Norway, whose whiskers stretched an incredible 5.33 metres.
- High-ranking Egyptians dyed their beards and plaited them with gold thread.

For more information and/or to register go to www.bowelcancernz.org.nz



only 3 more papers to go before Christmas!

Book your advertising today

345 3666

Corner Wicksteed & Ingestre Sts riverscitypress@xtra.co.nz www.riverscitypress.co.nz



136 Guyton Street, Wanganui

Kerri-Ann 348 0339
Bruce 344 5160



in association with MORRIS & SON BUILDERS - WANGANUI

Proudly supporting DECEM BEARD



Proudly supporting DECEM BEARD

Ph 06 347 7717
info@perthconcrete.co.nz
1B Airport Road, Whanganui



www.loaders.co.nz

Proud to support DECEM BEARD

- Drainage • Roading
- Earthworks
- Traffic Management
- Hydro Excavation
- Machinery Hire & Transport

06 348 9034 info@loaders.co.nz



CIVIL CONTRACTORS

Floyd & Toy Real Estate

EAT SLEEP SOLD It's what we do

Thinking of selling or buying property? For a FREE market appraisal, talk to us first.

Anthony Floyd Sales Consultant

M 021 477 435
E anthony.floyd@pb.co.nz

Leighton Toy Sales Consultant

M 027 415 1515
E leighton.toy@pb.co.nz



Property Brokers

pb.co.nz

Property Brokers Ltd Licensed REAA 2008

New fitness and massage business to improve women's wellbeing

Girl Get Up (GGU) Fitness and Massage, by Rose Moffit, is a new service in Whanganui aimed to improve the wellness of women. Rose unites the many health benefits of personal training and massage therapy to make a big difference in the lives of those she works with.

GGU Fitness and Massage offers a unique approach to meet the diverse needs of women. Massage services are catered to the individual's needs whether they need relaxation, sports recovery or muscular pain relief. Fitness offerings include personal training programmes, injury rehabilitation, sport-specific

training, and customised fitness regimes.

Rose developed a comprehensive business plan with Jay Rerekura, former Thrive Whanganui Impact Coach and Elise Goodge, Thrive Programme and Partnerships Lead. This was made possible with the support of the Ministry of Social Development's (MSD) Business Training and Advice Grant (BTAG). The business also received funding from MSD in the form of a self-employment Start-Up Payment to go towards setting up.

"I'm so grateful to MSD for this opportunity, and working with Thrive has been great. There is a ton of work that goes into



Rose Moffit of GGU Fitness & Massage. Photo credit: Musings Media

creating a business, I feel I've learnt heaps on this journey," Rose says. For more information or to book sessions, please visit their FB/Insta GGU Fitness and Massage or contact Rose Moffit via email: girlgetupfitnessandmassage@gmail.com or ph/text: 027 277 7934.

Tawhero Golf results

24 November 2023 Friday Twilight 9 Hole Ambrose: Team: Mud Slappers 29, Hackers 29.2, Out La Wed 30.5

25 November 2023 Saturday 18/9 Hagle [STABLEFORD] Dave Johnston 18, Bob Ashworth 18, Joshua Larkin 18, Lachlan Howe 18.

26 November 2023 18 Hole Haggie [NETT] Lachlan Howe 59, Craig Campbell 66, Rita Luke 69.

28 November 2023 Tuesday Par Round

2: Men's Division 1: Trevor Sammons +1, Dave Johnston -1, Sheldon Curtis -3. Men's Division 2: Bob McIntyre -3, John Deighton -6 Women's Division 1: Joan Shore -3 Women's Division 2: Jean Walsh 0, Priscilla Fonseca -4

Upcoming Events: November 2023 Twilight 2 Person Team 9 Hole Ambrose Friday's Tee off from 3.30pm -5.30pm. Saturday's 9/18-hole \$5 Hagle Tee off 7.30am-12.30pm.

Sri Lankan led community cricket match this Saturday



Members of the Sri Lankan community.

Sri Lankans, like most people from the Indian sub-continent area, love their cricket, and while the national team did not have a great time at the limited-overs cricket tournament in India recently, this has not dampened the love of the game with local Sri Lankans.

Over the last ten years, the community has played a cricket game between themselves, but this year, they will instead play a game against others, including those from the Multicultural community. The motivation is to connect more with the general Whanganui community.

There will be one major difference between really serious cricket games and Saturday's match - they will be using a tennis ball rather than a hard cricket ball, being very much aware that not everyone has faced up to the real thing. Of course, a tennis ball won't swing like a hard cricket ball, but perhaps the Australian approach of using sandpaper

will help.

There will be a wide variety of ages with both male and female players. The public is invited to come and watch. The game starts at 9am at Peat Park.

Thanks to some local sponsors - Nigela and Pahia Turia of A.R.C., Croft-hill Grove and Jayanthi Vallipuram, Immigration lawyer - there will be prizes for the best batter, fielder and bowler as well as the winning team, to be presented by Mayor An-

drew Tripe.

One of the organisers, Din Bandara, says, "It is the first time we have done something like this, and we are grateful for support from Cricket Whanganui and the Department of Internal Affairs. We hope that it might become an annual event."

The event will end, as all events should, with food: a BBQ prepared by Azian of Unity Food and a member of the Multicultural Council.

Record numbers for school aged softball leagues

Age-grade softball is pumping at the ballpark this season with the introduction of the U17 competitive league this term.

On the back of record numbers of tee-ball and softball school-aged games on Saturday mornings and a Secondary School slow pitch league with six teams on Monday nights, the Whanganui Softball Association are excited to see the new U17 league take shape.

The U17 Mixed grade allows players to improve and develop their skills amongst their peers. Until now, U13 players have had a senior competition as their only option after leaving intermediate school softball. The new league now provides a stepping stone to the seniors, and the number of sign-ups proves the new format is a hit.

With four teams entered and 48 players registered, Whanganui Softball has a competition with new-look tops for every team. The four teams, Mets, Angels, Red Sox and Yankees are well sup-



Angels v Yankees

ported by coaching staff and umpires to make sure the games are played to a high standard, while concentrating on bringing the up and coming players through. The competition has benefitted all players interested in the game. New players who have tried Slowpitch are now giving the Fastpitch game a try, and representative

players are able to gain valuable game time before heading off to national events in January.

The league is being played on Monday nights at the ballpark from 5.45pm and everyone is welcome to come and support. Having already played three rounds, with each game facing each other, the semi-final and

finals will be held over the next two weeks. Next Monday, the 4th of December will see the Mets v Yankees and the Red Sox v Angels in the semi-final showdowns. They will be epic matchups. Bring down your chairs, have a picnic tea and watch some great kids play some great softball at the ballpark Monday night!

Pigeon racing results

The St Johns Club Wanganui Pigeon Racing Adjunct held its eighth race of the season with a race from Otorohanga. The race attracted 51 pigeons from three fliers. The winning pigeon from the loft of Shane Gudopp, of Marton, covered the 207.49km in 3hr 48min 13sec to record an average speed of 909.18mpm or 54.55kph. The pigeons experienced moderate head winds on their flights to Whanganui (191.87km), Waverley, (182.66km) and Marton.

Results were:

Shane Gudopp (Marton) 909.18 mpm or 54.55kph, Brent Miller (Waverley) 907.20mpm or 54.43kph, B and A Fairweather (Whanganui) 760.86mpm or 45.65kph.

BBB
BROWN BROTHERS BIKES

43 State Highway 3, Wanganui

P 027 572 7696 W www.brownbrothersbikes.co.nz



Christmas is coming!

Get your kids bikes today, finance available.



Prices starting at \$1650 assembled

Stories from the Oaken Box - a book by local author

For a long time, Bill was known as the voice from the Hospital. Working shift work up to seven days a week, he answered the phone as follows: "Welcome to Whanganui Hospital; you're speaking with Bill."

He has written the story of his life called 'Stories from the Oaken Box' and says what spurred him to do so "was the fact that my late wife was always going to do that, and even though I had bought her three laptops over a period of years, she never made a start."

So, when Bill retired from the Hospital two years ago, he set himself three goals –

1. "To write my story"
2. To do a scrapbook of his time involved in the theatre and
3. To do something with my family history."

He has completed the first two projects and is in the middle of the third one.

His personal story goes back to when he was six and was run over by a truck, suffering a head injury, crushed ribs and being in a coma for three days. As a result, he was not allowed to play sports, much to his father's frustration.

However, his eldest sister, Lorraine Costello, persuaded him to join her School of Dancing in an upstairs location on Victoria Ave, which she shared with the Shirley Sanson (later McDouall) School of Music and a ballroom dancing group. "I learnt tap and ballet but had a lifetime of being teased and ostracised because, in New Zealand, boys don't dance! They play rugby."

He soon developed a love of acting getting involved in Repertory, the RSA Little Theatre in Wicksteed Street, now a martial arts centre, and then in Amdran.

Work was as a telegram

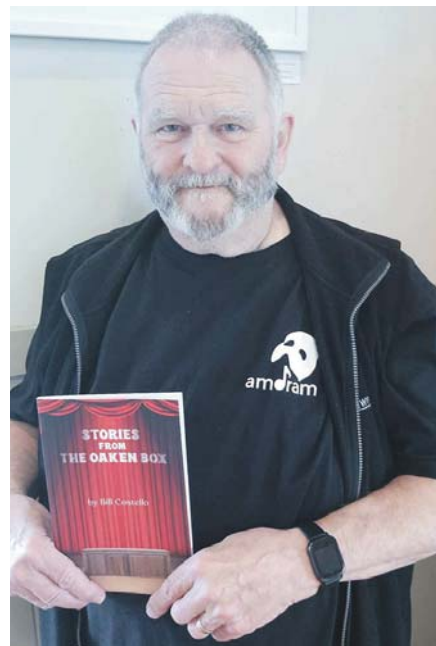
boy, progressing to toll operator and then being made redundant. "I couldn't find work for seven years and was encouraged to study Introduction to Business Computing through an Access Course at Polytech.

Several jobs followed until he was offered a job on the telephone at the hospital, eventually completing 16 years.

He returned to Amdran performing in the Phantom and is currently rehearsing for Sweeny Todd.

Bill also writes poetry and says "I just found it easier to express myself by putting things in poetic form. While working at the hospital, whenever an incident caught my attention, I would jot down my thoughts and turn it into a poem." When he retired, he gave colleagues a copy of his 'Selection of Work-related Poems.'

His book is 54 pages long and is an easy, interesting read. It sells for \$23.50. You can contact Bill on 027 340 9444



Blind Spot with Marion Hainsworth

With the year now fast getting closer to the Festive Season, this will be my last "Blindspot" until 2024.

The Craft Group will be continuing its Monday and Tuesday afternoon activities until the office closes on the 20th of December. It will start up again in January. We wish everyone Season's Greetings and safe journeys over the coming holidays.

The Peat Street office is open Mondays to Thursdays – 10.00am to 1.00pm. Phone 348-4401. It will be closing on the 20th of December and will re-open on the 8th of January, 2024.

If Members require a total mobility card then, Allie, at the office, can take the necessary photograph for the issuing of this document, through Palmerston

North.

If you see a vision-impaired person walking out with their guide dog, please remember that the dog is working and is not to be patted or played with. It is carrying out a focussed responsibility and should not be interrupted by well-meaning passers-by.

Thank you to the Whanganui Library volunteers who read for the daily dial-the-news service – the Whanganui Chronicle, the Mid-Week, and the River City Press. The phone number for this very appreciated service is: 349-3290.

We send our Seasons Greetings to all our valued helpers and volunteers, along with our appreciative thanks for their ongoing efforts and contributions throughout the year. Our very good wishes to you all.

WHAT'S ON IN THE COMMUNITY

About to look at life changes?

I am a Psychic Numerologist, and I can help you with decisions. I have felt blessed over the last 40+ years: guiding clients towards their self-confidence. My abilities include, "Search and Rescue (humans and animals... NOT gumboots or phones!) Sandra Singleton, Whanganui Districts. 06-345-3803.

Alcoholics Anonymous

Phone 0800 229 6757. If you have a drinking problem maybe we can help. AA Wanganui area meeting list: Sunday, St Johns Lutheran Church Hall, 51 Liverpool Street, Wanganui, 9am; Monday, Friendship Hall, Morris Street, Marton, 7.30pm; Tuesday, St Johns Lutheran Church Hall, 51 Liverpool Street, Wanganui, 12.30pm; Wednesday, St Luke's Church Hall, 34 Manuka Street, Castlecliff, 7.30pm; Thursday, St Johns Lutheran Church Hall, 51 Liverpool Street, Wanganui, 7.30pm; Al-Anon (family support) Friday, Gonville Library meeting room, 12.30pm. Ph 0508 425 266.

Book Launch: "Blue Duck Station" by Nicola McCloy

Wednesday 6 December, 5.30 pm, Riverboat Centre, 1a Taupō Quay. Speaker: Dan Steele. Enquiries phone Paige's Book Gallery (06) 348 9095

What's On in the Community Notices

What's On in the Community notices are \$10 for up to 50 words. Contact River City Press, by Tuesday 1pm to place your advertisement.

Epilepsy Seminars

11th December 2023 - 1.30pm - 2.30pm Community House, 32 Leach Street, New Plymouth & 12th December 2023 - 1.30pm - 2.30pm Community House, 60 Ridgway Street, Whanganui (Tea, coffee & biscuits provided) RSVP Email: taranaki@epilepsy.org.nz or phone/txt: 027 221-3657. Seminar covering Seizure Types, First Aid, Triggers and Seizure management.

Schola Sacra Choir presents "Rejoice & Be Merry" – songs and readings for Christmas

Including carols for the audience to join in. Conductor Iain Tetley, Organist Alison Stewart. Sunday, 3rd Dec., 2.30pm Christ Church, 243 Wicksteed St. Adults \$25, seniors \$20, U-18 free. Tickets at the RWOH or at the door.

Theosophy Whanganui Public Meeting

Usually held 2nd Sunday Monthly. Where: Community Arts Centre, back river entrance in the Awa Room. When: 2pm What: Presentation with respectful discussion and communication. Purpose: No dogma, 'Do no harm', explore ancient wisdom to develop self with the universe. Email: theosophywhanganui@gmail.com

Wanganui Spiritual & Awareness Centre

Meetings 7pm Sundays, Quaker Meeting Rooms, 256 Wicksteed St. Local or visiting speakers or mediums sharing their spiritual gifts. Join our healing circle, take a raffle, stay for supper and chat. Everyone is welcome. Koha appreciated. See our Facebook page for details. Ph: 027-697-6308.

Book giveaway

Bill has donated two copies of his book to be given away in a draw for our readers. To win one of the books, all you need to do is send an email to rivercitypress@xtra.co.nz, putting 'Oaken Box' in the subject line and giving us your daytime contact details.

Alternatively, you can bring those details into the River City Press office at 52 Ingestre Street. The draw will be made on Friday, 8 December.

Recent Bereavements

Sadly passed away recently...

Jan ARNOLD,

on 19 November 2023, aged 79 years.

Mark Wayne CRONIN,

on 21 November 2023, aged 61 years.

Michael Philip DALE,

on 23 November 2023, aged 69 years.

Phillip Campbell (Doc) HAWTHORNE,

on 27 November 2023, aged 81 years.

Anna Gai Robyn (nee Percy) HUNTER,

on 21 November 2023, aged 68 years.

Brian John (Swampy) MARSH,

on 22 November 2023, aged 63 years.

Ellen Gordon (Ella) MONTGOMERY,

on 24 November 2023, aged 93 years.

Pamela Ruth (Pam) PERRY,

on 22 November 2023, aged 76 years.

Valerie Joy (Val) SKJOTH,

on 18 November 2023, aged 87 years.

Philip William WATSON,

on 19 November 2023, aged 64 years.

DEMPSEY & FORREST

FUNERAL DIRECTORS

Arrange a visit today and meet our friendly team.

We are here to help you in your time of need.

208 Guyton St Phone 06 349 0202 any time

www.dempseyandforrest.co.nz

Anderson Memorials

Your loving memories set in stone

100 YEARS 1914-2014

HEADSTONES

Family owned for since 1914

For all monumental work in all cemeteries

Check out our website below

462 Somme Parade, Whanganui - opposite the cemetery
Tel (06) 343 8708, Email: info@anderson-memorials.co.nz
Showrooms in Feilding & Palmerston North
www.anderson-memorials.co.nz



Copyright:

River City Press produces and/or publishes advertisements strictly on the basis that River City Press is entitled to and owns the copyright in the advertisement so far as the copyright relates to publication or reproduction for publication in any newspaper, magazine or similar periodical or to broadcasting of the advertisement.

Cleveland Funeral Home

(06) 345 5522

Pre-Planning
Call or Visit For Your
Free Pre-Planning Pack

179 Ingestre Street | clevelandfunerals.co.nz

Local author produces book 'Coco's Big Adventure'

Michelle Aston-Koedyk is a busy woman but has somehow found time to write a short book for children called *Coco's Big Adventure*, for which she also did the illustrations.

She works a couple of days for 'Simply Italian' and another couple of days for Bear Print and then helps Liz Frith at the Rivercity Dance and Leisure Centre. She is also a painter with a business called Art Nest NZ Ltd.

But when her cat went missing for a couple of days and was found in a cat trap that the neighbour had installed to capture stray cats, she did some research about the Animal Welfare Act, which is based on the five freedoms of animal welfare. An irony was that her cat, Coco, was originally a stray kitten.

She decided to write a brochure explaining the Act but moved on to write a story instead. It is an 18-page book based on her own experience. As she had studied graphic design, she also did the illustrations – the black cat with a mouse close by.

The result is a very readable story with simple but effective illustrations, suitable for a wide range of ages, and adults would also learn a lot from it. It ends happily ever after, although in real life, Coco took some time before venturing outside again. Michelle says, "Coco is a different cat – much more wary."

Michelle has self-published the book through Amazon, and the proceeds from the \$15 price will go to the SPCA. It is also available as an E-Book on Amazon Kindle.

As Michelle will be at the 'In the Garden' pottery and art show at 38 Pauls Road from 9am to 4pm this weekend, she will be selling not only her art but copies of the book. Otherwise, the book is likely to be available



Michelle Aston-Koedyk

from the SPCA.

She describes her art as "abstract emotionalism" with a presence of clouds. She paints in oils and prefers large canvases. She also has photographs and graphic designs.

Michelle thanks Murray at Bear Print for his generous support in donating the printing for the book, Karine at Simply Italian Jewellery, and her book club friends, in particular Penny Robinson, Karen Craig and Marina Belsito.

SITUATIONS VACANT

INDEPENDENT BOARD MEMBER

The Wanganui Greyhound Racing Club is seeking expressions of interest for the position of Independent Board Member.

The Board consists of five members made up of two independent members and three elected members.

The Independent Board Member position is for a term of two years and ideally we are seeking someone who has expertise in areas such as management, marketing, sales law or finance.

The applicant ideally would have an interest in greyhound racing but cannot depend on their livelihood from greyhound ownership, training or breeding.

Applicants are also ineligible if they are adjudged bankrupt, have been convicted of any offence that carries a penalty of three months imprisonment or more, is a disqualified Director, is subject to a Property Order.

Please forward your expression of interest along with a current Curriculum Vitae to:

Private and Confidential

Board of the WGRC, PO Box 854, Wanganui or email to: secretary@wanganuigreyhounds.co.nz

Closing dates for applications is **Wednesday 13 December, 2023 at 5pm**

PUBLIC NOTICE

SECTION 101 SALE AND SUPPLY OF ALCOHOL ACT 2012

Sunlaw Investments Limited, 2 Bell Street, Whanganui has made an application to the District Licensing Committee at Whanganui for a renewal of an On Licence in respect to the premises situated at 2 Bell Street, Whanganui and known as the **Commercial Hotel**.

The general nature of the business conducted under the licence is a Hotel.

The days on which and the hours during which alcohol is sold under the licence are **Monday to Sunday, 8.00am to 2.00am the following day**.

The application may be inspected during ordinary office hours at the office of the Whanganui District Licensing Committee at 101 Guyton Street, Whanganui.

Any person who is entitled to object and who wishes to object to the issue of the licence may, not later than 25 working days after the first date of the publication of this notice, file a notice in writing of the objection with the Secretary of the District Licensing Committee at DLAdministration@whanganui.govt.nz.

No objection to the issue of a license may be made in relation to a matter other than a matter specified in section 131 of the Sale and Supply of Alcohol Act 2012.

This is the second publication of this notice.

The first notice was published on November 23, 2023.

TRADES AND SERVICES



KineticElectrical®
smarter

Nick Hall

Manager
Electrical & Communications
m: 027 244 9307
p: 06 345 5552 Whanganui
e: nick.hall@kinetic-electric.co.nz

Taupo
Whanganui
Palmerston North
South Taranaki
www.kinetic-electric.co.nz



Elevate Tree Service

- Tree felling
- Tree removals
- Pruning
- Digger Services
- Log Slabbing
- Chipping

022 355 4894
david.beatson@hotmail.com

Family Fun ENTERTAINMENT

- Bouncy Castles
- Obstacle Courses
- Slides
- Sports Gear & Extras
- Rides & Foam Cannon
- Concession Gear



Phone Jason
021 174 5035
www.family-fun.co.nz

HANDYMAN

For your Carpentry, Decks, Small Alterations, Plumbing, Drainage and Roofing Jobs.



Give me a call on 021 27 99 777



MONKEY BUSINESS
Tree Care

OUR SERVICES

- pruning
- tree removal
- hedge trimming
- reductions
- storm damage
- maintenance
- planting

Get in touch for a FREE quote!

Eddie White
ARBORIST

mbtreecarenz@gmail.com
027 385 6597
www.monkeybusinessnz.com



Get Your Best Mortgage Here

Natalie Sara
Residential & Commercial
Mortgage Adviser

022 164 1566
natalie@vegaland.co.nz
www.vegaland.co.nz



Only 3 more papers until Christmas!

FIREWOOD FOR SALE

AFFORDABLE firewood starting from \$50 a cubic metre for sale. Please phone us on (06) 343-8466.

WORK WANTED

A builder, renovator. Plumbing, electrical, painting etc. Large and small jobs. Quality workmanship guaranteed. Rates negotiable. Call Leo, 027-433-1431, (06) 927-5289.

HOME maintenance and shifting. House clean-up, gardening, water-blasting, spout cleaning, de-cluttering. Ph Ray 027-2807015.

MOBILITY scooters. Sales, service, repair, rental wheelchairs, walkers, ramps. Call Graeme 021-1195118 or (06) 347-6927.

PAINTER and Plasterer, professional, efficient and experienced. No job is too small. Reference available. Call or text 022-035-0175.

SITUATIONS VACANT

GET paid to exercise! Pamphlet Distribution require reliable runners to deliver RCP and brochures each week. Phone Bubs on 343-2010 or 027-218-2010.

DOG WALKING SERVICE

DO you wish you could give your dog the exercise they need, without having to walk them yourself?
Call/txt 022-010-3577.

RCP - locally owned & operated

BackBeat Mobile Disco
with **Dj Dave Dee**
Music for any occasion
* Private Functions
* Weddings
* Parties
* 21st's
email: the_raven@slingshot.co.nz Ph: 022 571 7077

RCP - locally owned & operated

100% locally owned
Dave Hoskin CARRIERS LTD
Furniture removals door to door
National and international
390 Heads Rd, P.O. Box 5042 Wanganui
Phone: 06 344 7002 Email: darrell@hoskincarriers.co.nz

Book your advertising now
email: riverscitypress@xtra.co.nz
Phone 345 3666
52 Ingestre St

NEED HELP?

Emergency.....111
 City Mission/Foodbank345 2139
 Women's Refuge Wanganui 344 2204



CLASSIFIEDS

52 Ingestre St Ph 345 3666
 Email: rivercitypress@xtra.co.nz

Nominate someone you think is deserving of our **Bouquet of the Week!**



Email or facebook message us with your nomination and reason why they deserve to win!
 email: rivercitypress@xtra.co.nz
 facebook: River City Press Wanganui



PUBLIC NOTICES / ENTERTAINMENT

Christmas at Piko Piko Restaurant

Work Functions, Family Gatherings or a Group of Friends for a Christmas buffet!
 Bookings essential - come and celebrate with us!!

for bookings:
 email: pikopikorestaurant@gmail.com
 or text 022 315 4969

ALSO OPEN CHRISTMAS DAY
 with a fabulous Christmas lunch!
 Two sittings - limited availability
 11am-12.30pm and 1-2.30pm
 Members and guests welcome

CLUB metro 13 Ridgway Street Whanganui

Self Storage Hatrick East

BRAND NEW and in CENTRAL WHANGANUI

- 6m x 3m
- 4m x 3m
- Safe & Secure
- Security Cameras

Enquire NOW!

Phone or Text 027 372 2319

Pirates P & F WANGANUI

Wanganui Pirates RUGBY MUSTER 2024

SUNDAY 3RD DECEMBER 2023
 from 1pm at Spriggins Park
 (Wanganui Pirates end of the park)

REAL ESTATE

Spring A fresh start!
 Thinking of Selling or Buying property?
 For a Free marketing appraisal and your free marketing plan, talk with Marion Farr today
 Experience + Expertise = Results
 Email: marionfarr@xtra.co.nz

Please call **Marion Farr** on **021 572 033**

THE WATSONS
 ROSS WATSON REAL ESTATE AGENZ
 Licenced under the Real Estate Act 2008

Christmas Trees on Somerset
 THE REAL SCENT OF XMAS

at 121 Somerset Rd, Springvale

Weekdays - 5-7pm
Weekends - 9am-5pm

UNTIL TREES ARE SOLD!
Be quick as they look awesome

BUYING and SELLING USED FURNITURE

GINZA BARGAINS

Phone 345 3154
 54 Maria Place Extn
 Email: ginza2@xtra.co.nz

WANGANUI EAST CLUB

MEMBERS' DRAWS MUST GO!

SATURDAY 2 DECEMBER

\$1200 - 6.30pm
\$400 - 7.30pm

101 Wakefield Street, Wanganui East
 Phone 06 343 7023

WEBSITE DESIGN

GET a stunning, contemporary website at minimum cost, or give your old one a strategic revamp. Phone Peter on 020-4161-3506 or email peter@toucan.media.

FOR SALE

BEEHIVES full depth plus three quarter strong queens, plus excluder. You take away. \$200 or near offer. Phone 021-202-4799 or 021-023-77677
BLINDS - Roller & Venetians to order. Free measure and quote. Strath Davis Furniture & Flooring, Ph (06) 345-0883.
BRAND new kid's clothes plus knitted items, 1-4 yrs \$10, Cot Quilts \$40.00. Cash only. Ring 06-345-0267
NEW books available at River City Press, 52 Ingestre St. "From the Sea to the Mountain"; "Whimsical Tales of Old Wanganui"; "More Whimsical Tales of Old Wanganui"; "My Life - Annasophia".
TOP range now available of 6 dollar shrubs; Lavender stoechas, Rosemary Blue Lagoon, Teuchrium Fruiticans, Hebes, Orange Day-Lillies, Australian Mint Bush, Felicia 'Blue Jay', plus 6 dollar hedging; Griselinia, Totara, Corokia 3 varieties, Lonicera Honeysuckle Golden Box, Buxus, good variety of Pittosporums and White Manuka, Parnells Quality Tree and Shrub Nursery, 102 Fox Road, Wanganui, phone 344-6645, Est. 1895.

LAWN MOWING

LAWNS NEED MOWING?
 Cutting Edge Lawns

Keeping Lawns & Costs Down!

- Locally owned & operated
- Pensioner discounts
- WINZ Quotes
- Ride on work

WANTED

ANY Cars Wanted Dead or Alive

TOP CASH PAID

\$100 - \$1,000 for small car
\$100 - \$7,000 for 4x4 UTEs
 Vans, 4WD, Trucks, Buses

Ph Today 021 032 3006
Text: 022 538 0807

Wayne Bishop
 Phone **027 555 3074**

LAWNMOWING + GARDENING

LAWNMOWING, section tidy-ups, pruning, WINZ quotes. TEL-TX 06-344-2535 021-0899-2345.

HEALTH & BEAUTY

JADE Traditional Thai Massage. Excellent massage at reasonable prices. 64 Guyton Street. Phone 348-8466 for an appointment.

PERSONAL

FREE confidential health checks, STI and HIV screening. Whanganui Hospital. Phone for consultation 348-1775/021-323-077.

FRUIT & PRODUCE

FRESH vegetables available, open Thursdays, Fridays. Laugeson's Gardens, Westmere Road.

Paiges.™
 THE BOOK GALLERY

BOOK LAUNCH

Blue Duck Station
 by Nicola McCloy

Wednesday 6 December 5.30pm
 Riverboat Centre 1A Taupō Quay

Speaker: Dan Steele
 Enquiries phone **Paige's Book Gallery (06) 348 9095**

Wanganui Motor Boat Club

ANZAC PARADE RAMP CLOSED
December 2 & 3

Cancer Society
 Te Kāhui Matepukupuku o Aotearoa

RELAY FOR LIFE

Whanganui
3pm 23 - 11am 24 March 2024
Cook Gardens, Whanganui

- Yoga Under the Stars
- Live Bands
- Silent Disco
- Candlelight Vigil
- Outdoor Movie
- Celebration Lap

AND MORE!

SIGN UP TODAY AT
relayforlife.org.nz

AFFORDABLE LAWMOWING

Great quality service, great price. Pensioner rates available. Call Paul on **021 245 4999**

WANTED TO BUY

GINZA. Always buying, always selling. Good used furniture, antiques, China and collectables. Call Ginza 345-3154

WANTED TO RENT

Elderly couple looking to rent a 3 bedroomed house long term in Whanganui ASAP. Phone (06) 343 1606.

River City Press
 Positive news stories welcomed
 Email: rivercitypress@xtra.co.nz

DoC thanks all its volunteers

The Department of Conservation celebrated and thanked its wide range of volunteers in a function at the Te Ao Hou Marae in Aramoho on Tuesday, 28 November, ahead of the International Day of Volunteers, which is on 5 December.

In their Whanganui Conservation Pānui (Newsletter) they reported, "Volunteers have made a huge contribution to conservation in the Whanganui district over the last year, and DOC wants to celebrate this mahi with a networking/whakawhanungatanga opportunity."

As Garry Davis from DOC said, "We told them that there would be no weeding, planting or cleaning in sight. We wanted to be a time for

volunteers to connect, socialise and enjoy some delicious kai."

The event went from 10.30am to 1.30pm and you could come and go as you needed and when the RCP was there, there were about 60 people who represented a wide range of groups, including:

- Bushy Park Tarapurui
- Friends of the Whanganui River, who help clean up the John Coull Hut upriver
- Taranaki/Whanganui Conservation boards
- Friends of Gordon Park
- Horizons
- Castlecliff Coast Care
- Forest and Bird/Kiwi Conservation Club
- Enviro educators
- Sustainable Whanganui
- Predator Free Whanganui



Katy speaking with the volunteers.

- Whanganui Tramping Club and
- Pasifika.

Garry says they chose Te Ao Hou Marae as it could host everyone under

cover, as well as it being a welcoming and a culturally significant place where they are doing their own riparian planting and restoration.

Each group had a chance to explain to the others what they did to assist in promoting and maintaining New Zealand's environment.



INTERNATIONAL VOLUNTEER DAY

Tuesday 5 December

How to participate in International Volunteers Day

Participating in International Volunteers Day is an excellent way to recognize and support the efforts of volunteers in your community. Here are some ways to get involved:

Volunteer Your Time: Consider volunteering for a cause or organization that aligns with your interests and skills. Your contribution, no matter how small, can make a significant difference.

Thank a Volunteer: Take the time to express gratitude to volunteers you know personally or within your community. A simple "thank you" can go a long way in acknowledging their efforts.

Attend Volunteer Events: Many communities organize events and activities on International Volunteers Day to showcase volunteer work. Attend these events to show your support.

Donate to Volunteer Organizations: Financial contributions to volunteer organizations can help support their programs and initiatives. Even a modest donation can have a positive impact.

Share Volunteer Stories: Use social media and other platforms to share inspiring stories of volunteers making a difference in your community. Encourage others to join the volunteer movement.



Te Ope Whakaora

HOMEWARE & CLOTHING DONATIONS NEEDED

**428 - 432 Victoria Avenue
Phone 345 2779**

Caring for People, Transforming Lives,
Reforming Society

Real skin, real results

HELLO, WE'RE CACI, SKIN, LASER AND INJECTABLES EXPERTS.

Our Memberships:

- Skin Health
- Laser Hair Removal
- Cosmetic Injectables
- Body Shaping

Membership benefits:

- Personalised plan
- Rewards!
- Skincare savings
- Payment plan



OPENING HOURS:

- Tuesday 9:30am - 5:00pm
- Wednesday 9:30am - 7:00pm
- Thursday 9:30am - 7:00pm
- Friday 9:30am - 5:00pm
- Saturday 9:30am - 3:00pm

Caci Whanganui | 06 213 4333
85 Victoria Avenue, Whanganui



NEW ZEALAND RED CROSS
RIPEKA WHERO AOTEAROA

Thank you to all our amazing volunteers for all their hard work and dedication.

Visit our Second Hand Bookshop at 73 Liverpool Street.





INTERNATIONAL VOLUNTEER DAY

Tuesday 5 December

Local volunteers' breakfast

Volunteer Whanganui is celebrating volunteering this year with a wonderful community breakfast. 9am, Tuesday, December 5 at Christ Church, 243 Wicksteed Street. Contact Sandra Rickey for further information on 347 9430 or email whanganuivolunteercentre@xtra.co.nz

The economic contribution volunteering makes

Around 1.2 million kiwis volunteer for at least one charity or not-for-profit organisations, which adds up to over 157 million hours donated to our communities each year.

This generosity and community spirit means that not-for-profit organisations contribute \$6 billion worth of time and skills to our GDP every year. The value of volunteers' labour alone

contributes \$3.5 billion to our GDP.

Volunteering is important for all communities regardless of their size or location. Volunteers make a huge contribution to New Zealand in almost every type of activity: From sports, recreation, arts, culture and heritage to emergency and social services, health, education, conservation and the environment.



International Volunteer Day on 5 December was designated by the United Nations in 1985 as an international observance day to celebrate the power and potential of volunteerism.

It is an opportunity for volunteers, and volunteer organisations, to raise awareness of and gain understanding for, the contribution they make to their communities. It is also viewed

as a unique chance for volunteers and organisations to celebrate their efforts, to share their values and to promote their work.

The act of volunteering is found in all cultures, languages and religions. Each year, hundreds

of millions of people volunteer their time and skills to help make the world a better place. When they volunteer, they help to improve the lives of others. And when they volunteer, they also gain a greater sense of belonging to



Wanganui Lions

Helping our community for more than 60 years.

Men and Women are active in our club.

For further information contact Terry 027 344 4440



AGE CONCERN WHANGANUI

He Manaakitanga Kaumātua Aotearoa

A huge thank you to all our wonderful volunteers!

Help us make a difference in our community.

**Contact 345 1799
164 St Hill Street, Whanganui**



We would like to say thank you to our wonderful and dedicated volunteers. We appreciate you!

If you would like to get involved in activities in Whanganui, and find out about volunteering for conservation then please get in touch.

Contact: Community Ranger
Garry Davis
Ph: 027 230 3975 Email: gdavis@doc.govt.nz

LEGAL ADVICE, INFORMATION ASSISTANCE & EDUCATION



COMMUNITY LEGAL ADVICE WHANGANUI

Proud to support International Volunteers Day

Drop in and see us at:

Suite 2, 236 Victoria Ave, Whanganui

Phone 348 8288

Thank You!

The Whanganui Civil Defence team want to acknowledge and thank all our local volunteers who have helped out over the last year. A special shout out to all our community radio operators in town and across the District.



Whanganui District Emergency Management



Thank you to our volunteers!

Your commitment to the City Mission Foodbank & Zest for Mission Shop goes a long way towards helping people in need.

If you'd like to be part of our team please email **info@citymissionwhanganui.org.nz**

PACK the BUS.

Our thanks to you!

Thank you to everybody who donated
to this wonderful cause



All items donated to:

