

**COMBINED Plumbers**  
 Plumbers • Gasfitters • Drainlayers  
 70 Wilson St, Whanganui Ph 06 347 6970  
 www.combinedplumbers.co.nz

**JAYLINE**  
 your fire place  
 T's & C's apply. Excludes ULEBs. Limited time only.

52 Ingestre Street, Whanganui. Phone 345 3666 or 345 3655, email rivercitypress@xtra.co.nz

# Surfing for Farmers in Whanganui

BY DOUG DAVIDSON

**Surfing for Farmers is a unique opportunity for farmers to take a break from their all-consuming businesses and head off to the surf to enjoy fresh air, exercise and the chance to meet fellow farmers.**

It was started in Gisborne in 2018 by farmer Stephen Thomsen and has spread rapidly ever since.

It now covers 28 locations around the country, including Kai Iwi/Mowhanau Beach in Whanganui. According to their website, last year 4159 farmers surfed with 590 instructors involved.

Andrew Pearce, a dairy farmer out at Kauangaroa near Fordell, is the local coordinator.

"Surfing for Farmers had had some publicity

in the rural press and two or three of us got together and thought we'd have a go," says Andrew.

"We got it started last year and there's an average 20-30 people taking part, although earlier in the season we had 45 in the water."

Instruction is given by local surf coach Rob Middleton and Andrew says: "He is a crucial part of the scheme for us - he's the glue that holds it together. We have a trailer and he brings the 25 boards along with him."

Sponsors supply the boards, wetsuits, BBQ equipment and food and the cost of the instructors, so there is no charge to the farmers or their families, who are also welcome.

At national level, there are sponsors such as Fonterra, Beef & Lamb NZ, Jarden Investments, Balance Agi-nutrients, Rabobank and Bayleys country division, but Andrew is particularly appreciative of the local sponsors who have got behind the scheme.

"We have an incredible group of local sponsors -- about 15 small rural businesses. It was an easy sell as it is such a great concept."

Surfing takes place on a Tuesday from 5.30pm to 7.30pm and afterwards there is the BBQ and time to chat. The 14-week season runs from November to March, and the group is looking to venture out to other beaches in the area.

Andrew, himself, had only had limited time in the surf and a couple of lessons, but he insists it is for all ages and all levels of expertise.



Farmers at Kai Iwi/Mowhanau Beach ready for a surfing lesson

"Anyone can learn and it is a great antidote to work and so good for our mental health. It makes us feel proud to be farmers again."

Mental health was a major motivation in setting up the scheme which is modelled on an idea used to help former United

States servicemen. Says Stephen Thomsen: "With a lot of big numbers around stress and mental health and suicide in the farming community, I was keen to do something about it rather than keep hearing about it."

He says the weekly sessions are a rare opportunity for farmers to

talk about something other than farming, and describes it as a safe and supportive environment.

Andrew reckons the group has only tapped into a small proportion of farmers in the region. "We welcome new members every week and we

are keen to see more people come along from the local farming community.

The group covers farmers not only from the Whanganui region but also South Taranaki, Rangitikei, with one farmer coming down from Ruapehu.

**WANGANUI BEDROOM Specialists**  
**OPEN 7 DAYS**  
 Locally owned & operated  
**151 St Hill Street, Wanganui**  
**Phone 06 345 6084**

**Harcourts**  
 Whanganui  
**Looking to sell?**  
 call me  
**Paula Siddells on 027 500 1242**  
 for an award winning sales agent who gets results!  
 #siddellsells

**Paula Siddells**  
 Licensed Real Estate Agent REAA 2008

**Speedy Signs**  
 grow your business faster  
**06 213 4555**  
 Stickers, Vehicle Graphics, Clothing, and Signs

**OUTDOOR FURNITURE CLEARANCE**  
 Be quick for END-OF-SEASON MARKDOWNS while stocks last!

**DIMOCKS HOMESTORE**  
**100% BedsRus** PH 06 348 4877  
**190 VICTORIA AVE, WANGANUI** **OPEN 7 DAYS**

**ENROL NOW**

We have courses in:

- Animal Care
- Rural Animal Technician
- Carpentry Level 3
- Agriculture Level 3 - Dairy

**AGC TRAINING FOR INDUSTRY**  
 CHALLENGE YOUR FUTURE | WHAKAAEHA TO WERO  
 Call 0800-348 8215 www.agctraining.co.nz



# Check out what's in this week's RCP

We may have experienced cooler early mornings in the last week, but Whanganui is not cooling down in terms of things to do, success in the sports arena, ways to stay connected and involved in the community, and the pride we have for Whanganui's heritage.

Congratulations to Mainstreet Whanganui for reaching the 30-year milestone. Check out the Mainstreet story (pages 15-19) and remember to say hi to the Mainstreet team when you see them out and about maintaining our green and clean CBD.

National Waka Ama success this year was soon followed by success at the Māori Basketball Nationals (page 22). Sport can be a pathway to building relationships and confidence. Speaking of sport and connections, RCP's front page tells the story of how thinking outside the square and being active can make a difference in our community and beyond.

St Anthony's annual Medieval Fayre brings a glimpse into the past this weekend; there'll be axe throwing, sword fighting, horse riding and plenty of plants, produce and home baking (page 6). More entertainment for the family continues next weekend with Rotary's fundraising event at Kowhai Park (page 21).

Pride Week kicks off next Saturday with many activities to inspire and support (page 11-13).

## Copyright:

River City Press produces and/or publishes advertisements strictly on the basis that River City Press is entitled to and owns the copyright in the advertisement so far as the copyright relates to publication or reproduction for publication in any newspaper, magazine or similar periodical or to broadcasting of the advertisement.

# National Geographic name Sarjeant Gallery as one of the "Best Cultural Spots" in the world

The Sarjeant Gallery has been named in a 'Best Cultural Spots' list for 2024 by National Geographic as part of its 'Best of the World' recommendations.

'Best of the World 2024' was created, researched, reported and written in collaboration with National Geographic's international editorial teams, which serve millions of readers worldwide through their magazines and websites.

This year's travel guide celebrates not only must-see destinations but also must-do, must-stay and must-consume recommendations for travellers.

For the first time, 'Best of the World' recommendations include cultural gems that National Geographic's experts agree are "worth building a trip around".

"We know travel has the power to move you; that the experiences you have can make you see the world — and yourself — in a new light," says National Geographic editor-in-chief Nathan Lump.

"This year, we wanted to give travellers more ideas to jumpstart their travel planning for 2024 so we

grew our lists to include curated hotels, restaurants, wellness retreats and cultural spots, like the Sarjeant Gallery, that we believe are worth getting on a plane for."

Whanganui mayor Andrew Tripe said he was delighted National Geographic had recognised the Sarjeant Gallery as one of the top 20 cultural locations in the world for 2024.

"This is a spectacular acknowledgement for the huge number of people and organisations who have been working to support the Sarjeant Gallery on its journey towards opening its redeveloped facility



The upgraded and expanded Sarjeant Gallery is scheduled to re-open towards the end of this year.

later this year," said gallery director Andrew Clifford.

The upgraded and expanded Sarjeant is scheduled to re-open towards the end of 2024.

uled to re-open towards the end of 2024.

# How many councillors do we need? – feedback wanted

Whanganui residents are encouraged to participate in shaping the future representation of people and communities at Whanganui District Council by engaging in a preliminary survey which is now open.

The council is currently engaging in a representation review, which looks at the number of councillors to be elected, the basis of election for councillors (such as wards) and whether there are to be community boards in the district, where they might be, and what their membership arrangements are.

Andrew Tripe, Mayor of Whanganui, says community input is crucial in order to get an idea of how people want to be represented.

"Council representation should be fair and effective for all Whanganui residents, therefore we are reviewing what is currently in place to see if any improvements can be made. We want to see representation arrangements that are reflective and adaptive to current and future communities."

Feedback gathered from the survey will be reviewed by a working party, comprising councillors and council officers. This feedback, combined with additional

information about the city's communities, will serve as the groundwork for any recommended changes.

Currently, Whanganui is represented by a mayor, 12 councillors and a Rural Community Board. Representation reviews are required every six years, with the council's last review in 2018. Additionally, the decision to establish Māori wards earlier this year triggered a representation review.

After gathering feedback from the initial survey, the working party will present a report to the council that will include various options outlining the potential make-up of the council. Following this decision a community consultation will be undertaken. Once the formal consultation closes, the council will make a final decision on representation arrangements in July 2024.

The preliminary survey is open until midnight on Sunday, 10 March 2024. Head to the Have Your Say page to complete the survey: [www.whanganui.govt.nz/rep-review-2024](http://www.whanganui.govt.nz/rep-review-2024)

Formal consultation will begin in May this year and will also be available on the Have Your Say page.

MADE IN NORWAY SINCE 1971



Stressless

RELAX YOUR BODY SALE

SAVE UP TO \$1000

It's time to float on air.

When you sit on a luxurious Stressless® recliner your whole body instinctively relaxes: it feels like you're floating on air. Try one! Because feeling is believing.

IT'S TIME FOR

Stressless®

Buy with confidence with our 30-day Money Back Guarantee\*

\*Conditions apply

WANGANUI FURNISHERS

BRIDGE BLOCK 33 VICTORIA AVENUE CARPET SHOWROOM LOWER ST HILL ST PII (06) 3454554 FX (06) 3454556 PO BOX 154 WANGANUI email: wangafurn@xtra.co.nz



Moving times, moving values

For a FREE no obligation appraisal give Bruce a call.

Bruce McGhie Sales Consultant M 027 333 2587 E bruce.mcghie@pb.co.nz

100 MILLION DOLLAR CLUB

'Making every deal a big deal'



pb.co.nz Property Brokers Ltd Licensed REAA 2008

Property Brokers®



# Castlecliff - 'the rise and fall of a port'

Brian Gibson, son of Trevor Gibson, brought in some items from Trevor's collection of information and pictures about the port. Trevor was involved with the port for many years. One article he had kept was on 'Castlecliff - The Rise and Fall of a Port', written by Barry J Goater in February 2008. His article is especially interesting in light of the extensive Port redevelopment which is currently taking place. The following is a summary of that article.



A busy port back in the day - Image courtesy of Trevor Gibson

Overseas ships arriving in Whanganui were anchored where the Union Boat club now is. Soon after a thriving coastal trade developed in wheat and timber and by 1855, Whanganui was declared a Port of Entry and soon after, a Customs House was built.

Castlecliff was developed as a port to overcome the difficulties of upriver navigation and was protected by the development of north and south moles. In 1924 the vessel Te Anau was towed from Dunedin and sunk on top of the hulk Endeavour as a breakwater.

A coal wharf was built adjacent to the then gas works, and the coal was carried by a conveyor across the road and railway. Soon there was an oil wharf as well next to where Bullocks yard now is. But in 1930,

the Shell Oil Company complained that a boat touched its bottom in the river. This led to tanks being barged down to Castlecliff.

Pre WW2, large refrigerated ships anchored in the river and were loaded from lighters with frozen meat from Imlay. Imports included phosphate, guano and sulphur for Kempthorne & Prossers new Aramoho works, plus timber and oil.

Post WW2, there was a decline started by the Conference Line dropping Whanganui as a port. Also, the new State Highway Cobham bridge hastened the closure of the Town Wharf.

A highlight was in 1968 when a Russian phosphate ship, the Poronaisk, called and attracted a large crowd of spectators. There were regular visits over the next decade, for the Ravensdown Fertiliser works but they ended by 1980. Shipments were now unloaded in New Plymouth and railed to Whanganui.

The coastal trade was dominated by a Milburn cement tanker from Takaka in the South Island and deliveries of grain for the Marton Malt Plant

There was a burst of activities when a large fish processing plant was opened in Castlecliff as a joint venture with Oyang Fisheries of Korea. But when two ships ran aground in the late 1980s and in 1990, the joint venture was finished.

There was a second coming of Russians when decrepit looking Russian trawlers fishing for hoki off the South Island's West Coast, visited. Their main interest was to buy old second hand cars such as Hillman Avengers, Triumphs and Hunters - the crew didn't think much of Japanese cars - and take them back as deck cargo to Russia, where they were destined for the local scrap yard

An Act of Parliament ended the existence of the Wanganui Harbour Board in 1988 making the District Council responsible for the port and its facilities. The Council leased the port to Ocean Terminals Limited in perpetuity, which in turn received all the rentals from the Harbour Board Endowment Land - "a not inconsiderable sum."

It did not lead to an increase in ship arrivals with the only development being the Southern Tug & Barge Company introducing a barge service between Timaru and Castlecliff. "Unfortunately the design of the barges proved to be unsuitable for coastal work."

Barry Goater ended his report stating that by 2008, "Castlecliff Port has deteriorated to a sludge-filled harbour ... the wharves are falling into disrepair. A slipway for pleasure craft has been built; mainly, it would appear, from rubble with mainly volunteer labour. The Moles are falling into disrepair and again concrete rubble has been carelessly dumped along the north Mole."

The Port Redevelopment Project could not have come soon enough to bring new life to the Port and its facilities.

# Nature Talks - birds, rocks and National Parks in South-East Queensland

Nature Talks starts its series of bi-monthly lectures on Tuesday 20 February with a talk by Diane Harries: *Birds, Rocks and National Parks in South-East Queensland*.

Diane, a renowned natural-history illustrator, and her husband, photographer Royce Johnson, visited southeast Queensland in late 2023, focusing on the natural history of this geologically and biologically diverse area. This region contains numerous national parks.

Di will talk about the birds and plants of the rainforests found on Queensland's Scenic Rim, a circle of spectacular forest-covered mountain ranges, including the world-renowned Lamington National Park. She will also take us through the geological formations of Girraween National Park, where massive granite inselbergs and amazing rounded balancing rocks dominate the landscape, and through the Bunya Mountains, Queensland's second oldest national park, home to the world's largest stand of ancient bunya pines.

Her talk promises to be a feast of stunning photographs and insights into this varied region. Her talk will be given in the Davis Lecture Theatre, Whanganui Regional



A male Satin Bowerbird, one of the iconic species found in Lamington National Park, SE Queensland. Photo credit: Royce Johnson

Museum, on 20 February, starting at 7:30. Entry is free.

Nature Talks is a series of bi-monthly talks offered by three local environmental groups - the Wanganui Botanical Group, Whanganui branch of Forest & Bird and Birds New Zealand

(Whanganui Region)—in conjunction with the Whanganui Regional Museum. The talks are normally given on the third Tuesday of every second month, on topics that relate to New Zealand's environment, natural history, and its conservation.

**COLOURPRO**  
PAINTING

Interior and Exterior  
Fully Qualified • Free Quotes  
*WE PAINT SO YOU DON'T HAVE TO!*  
Book in for your summer projects now!!

Phone Ash Regan 027 856 1779  
Email colourpropainting21@gmail.com

**SUMMIT**  
Electrical

Top Service • Top Workmanship • Top Electricians

- 24/7 Service
- FREE Quotes
- Member of HAZARDCO
- For all your electrical requirements

**Summit Electrical Services Ltd**  
0800 2 SUMMIT  
0800 2 786 648  
Todd Cowan - 022 325 0056

Member **MASTER ELECTRICIANS**  
Electrical Contractors Association of NZ

**THOMPSON**  
PLUMBING & GAS LTD

Master Plumbers

- General Maintenance Plumbing
- New Builds and Renovations
- Programmed Maintenance
- Drainage and Unblocking
- Gasfitting Service
- Hot Water Systems
- Heating
- Septic Tanks and Wastewater Systems
- Rain Water Tank Installation

06 345 0924  
office@thompsonplumbing.co.nz  
thompsonplumbing.co.nz

Find us on Facebook

**Gonville superValue**  
just what you need

**THIS WEEK'S SPECIALS**

Frozen Mutton Chops  
only \$7.99 kg

All \$15 Trays Fresh Chicken  
only \$10.00 each

**WILD WEEKEND SPECIAL**

1kg Bags Market Value Precooked Sausages  
only \$5.99 kg

2.5kg Meaty Pork Bones only \$7.99 each  
Whole Beef Neck Dog Bones only \$1.99 kg

**PRODUCE**

Truss Tomatoes  
only \$3.79 kg

Carrots / Onions  
only \$2.00 kg

**NEXT WEEK'S SPECIALS - STARTING 19.2.24**

Fresh NZ Rump Steaks  
only \$15.99 kg

\$20 Trays Crumbed Lamb Chops  
1/2 price only \$10.00 each

All items while stocks last (no rainchecks). Get in early.  
47 Abbot St, Gonville • Ph 06 344 3002 • 7am-8pm, 7 days  
www.wanganui.store.supervalue.co.nz



# Former chief executive donates his artwork to UCOL

# Tea and Topics - The history and role of Women's Refuge Whanganui



Coral Hanna, Student Success Senior Manager, and Campus Manager Bronwyn Paul with the John Scott artwork.

*By Mark Dawson*  
A striking artwork will soon be on show at UCOL's Whanganui campus, and it is the work of a former UCOL chief executive.

John Scott already has the campus library named after him, and now a 1990 abstract work of his has been donated to the college.

The metallic-looking acrylic-on-canvas work was given to his friend Paul McNamara, who ran a photographic gallery on Wicksteed Street, and now Paul has gifted it to UCOL.

"We got to know John when he came to Whanganui to run the polytechnic, and he gave us the painting back in the early 90s. I thought it would be nice if it went to UCOL," said Paul.

John Scott trained as a teacher and, after graduating from Otago University, worked at various schools and colleges in the South Island, all the while pursuing his interest in art.

He spent ten years as chief executive of what was originally the Wanganui Regional Community Polytechnic before it changed its name to UCOL in 2002.

While in Whanganui he developed his artistic skills, gaining support from Bill Milbank, then director of the Sarjeant Gallery, and coming into contact with artists such as Ralph Hotere, Peter Nicholls and Philip Truistum. He served as an executive of the Friends of the Sarjeant and is a life member of the Sarjeant Gallery Trust.

After leaving UCOL, he was appointed chief executive of Christchurch Polytechnic and later CEO of Bahrain Polytechnic. Now retired, he lives in Christchurch.

Gonville Library is proud to present our next Tea and Topics talk with Jo Voice. This is the first one of a series as part of La Fiesta 2024.

Jo has been involved in the field of Child protection and Social Work for many years, working in different roles and at different organisations. She has been working at Whanganui Women's Refuge for almost 1.5 years.

Women's Refuge has been a presence in Whanganui since 1978. Since then, it has had different structures, with the most recent iteration starting in 1988. Back then, it was known as the Women and Children's Shelter. We became a part of the National Collective of Women's Refuge in approximately 1995.

As Jo explains herself, "I have had the pleasure of managing this team since October 2022. In that time, we have grown to four daytime

advocates and four after-hours advocates and a full time administrator, serving the communities of Whanganui and surrounds (Bulls, Marton, Waitōtara, Hunterville).

"Our role is to support women and their children on their journey to becoming free from family violence. This might take the form of risk assessments, safety planning, advocacy, referrals to supporting agencies. Women or their support people can contact us via phone,

email or just by knocking on our office door. In the past 12 months, we have worked closely with the police, lawyers, medical professionals and other services in our community to provide assistance to 306 women and have received 469 calls on our crisis line."

Whanganui Women's Refuge receives government funding to support 112 women and their children per year. They are able to continue to do our work with the

generosity of community grants and donations.

The other two talks are about Falun Dafa Meditation by Diana Leu on 29 February and Winter Wellness by Irene Davies on 7 March.

Tea and Topics will have its usual format, with a hot drink and a biscuit being served between 10am and 10.30am. The talk will start at 10.30am and there will be ample opportunity to ask questions or share stories.

## Hats off to The Citadel



Getting a head start at The Citadel in Castlecliff.

*By Mark Dawson*  
Good customer service is something dear to the hearts of many of us.

That little bit of extra attention at a café, restaurant or retailer sticks in the mind and means we are more likely to return.

Well, The Citadel restaurant in Castlecliff has struck a new note in customer service by providing Vietnamese hats for customers dining in the outdoor area

under what has, at times this year, been a fierce sun.

Owners Roxi Douglas and Malcolm Whitlock came up with the novel way to stay cool and look cool when the large sun shades they had set up kept getting blown over by the strong coastal

winds.

"The hats are a bit different, a bit of a laugh, and they screen you from the sun and wind. It's a personal umbrella," said Malcolm. So hats off to The Citadel ... or should that be hats on?



Women's Refuge Whanganui manager Jo Voice

**THE Villa Café**

**NOW OPEN FOR DINNER**  
Bookings Essential  
ph 345 0033

Friday - Saturday  
5.00pm onwards

**FREE DESSERT**  
with every main  
purchased until the  
end of February.

71 Liverpool Street  
(opposite New World)

Find us on Facebook  
The Villa Café

**ARTISTS OPEN STUDIOS**  
**WHANGANUI**

Te Taonga Toi O Aotearoa  
The Arts Destination of New Zealand

**2024**

15 - 24 March  
Whanganui: the eclectic art capital of Aotearoa

Image: Ruby Duncan - A Mother Potter.

openstudios.co.nz

**eBikes**  
WANGANUI

New eBikes in stock and also eBikes available to hire!

Stockists of:

evincl wattwheels  
Buddyrider Molo YELO EBIKES

73 Putiki Drive, Wanganui | 06 348 8008  
www.ebikeswanganui.co.nz  
info@ebikeswanganui.co.nz



# Māori Ward votes start next year... or will they?

By Mark Dawson

When Whanganui citizens next go to the polls – the council election in 2025 – they will have the chance to vote for candidates in Māori wards. And they are also likely to be voting whether they actually want Māori wards.

Last year Whanganui District Council moved to introduce Māori wards for the 2025 and 2028 local government elections.

However, the ACT

Party, as part of its agreement to join New Zealand's new coalition government, has stipulated that such wards will be subject to a local referendum.

Though not yet passed into law, the coalition document sets out "the right to local referendum on the establishment or ongoing use of Māori wards, including requiring a referendum on any wards established without referendum at the next local body elec-

tions".

As things stand, two of Whanganui's 12 councillors will be Māori in 2025. This is based on the number of people on the Māori electoral roll as opposed to the general roll, with those on the Māori roll voting in the Māori wards.

Councillor Josh Chandulal-Mackay was a strong advocate for the introduction of the wards and he is worried by ACT's policy.

"We get more cohesion

and participation when our political institutions reflect the diversity of the population they serve," he said.

"We have a 26 per cent Māori population in Whanganui, but there's been no representation on council for a long time.

"There have been Māori candidates for every election I've stood in, but they've never been elected."

The district's last Māori councillor was Rangī Wills who lost out in the 2016 election – the year Chandulal-Mackay first won his seat.

He said ACT's policy was "divisive".

"It reflects the tyranny of the majority, and it is irresponsible of government to make decisions

on race-based issues via a referendum."

Chandulal-Mackay estimates around 40 councils have introduced Māori wards in recent years and, like Whanganui, will be impacted if ACT's policy gets on to the statute books.

ACT leader David Seymour said: "This change is about bringing back local democracy by allowing people to choose who represents them on their council.

"Labour removed the provision for a binding referendum where communities could oppose Māori wards' establishment. This stripped communities of their democratic ability to oppose race-based representation."



ACT Party leader David Seymour



Councillor Josh Chandulal-Mackay

**FOR THE BEST HIRE EQUIPMENT IN TOWN**

**MARQUEES • MACHINERY HIRE PARTY HIRE & SALES**



CONCRETE SACRIFIER



1.5 TONNE DRUM ROLLER



360KG PLATE COMPACTOR



**HARRISON'S HireMaster WANGANUI**

26 CHURTON STREET PH 345 7017

[www.hiremasterwanganui.co.nz](http://www.hiremasterwanganui.co.nz)



## TRC Toyota Whanganui

### Hey Toyota, got something going on Hilux?

Yep. But at these prices, they're almost gone.

Hilux SR PreRunner  
2WD Extra Cab  
NOW ONLY

**\$36,990** TDP\*



Hilux SR 4WD  
Double Cab Chassis  
NOW ONLY

**\$44,990** TDP\*

Requires Tray, not incl. in price



Hilux SR PreRunner  
2WD Double Cab  
NOW ONLY

**\$38,990** TDP\*



Hilux SR 4WD  
Double Cab  
NOW ONLY

**\$46,990** TDP\*



Hilux SR5 4WD  
Double Cab  
NOW ONLY

**\$49,990** TDP\*



**Plus, our Toyota Driveaway Price includes everything you need to get on the road.**

\*TDP valid on advertised models only while stocks last. TDP and product specification is subject to change at any time. See Toyota.co.nz for further information.



**Let's Go Places**

**WHAT MAKES THIS PRICE A GOOD DEAL?**

**Getting you on the road with the complete package.**

Toyota Driveaway Price is the amount you'll pay to get on the road and stay there in your new Toyota. It includes all on-road and registration costs, as well as a full tank of gas so you're ready to roll. Plus, you'll also receive Service Advantage, which will give you up to 5 years of worry free ownership.

**Toyota Driveaway Price includes**

**All On-Road and up to:**

**5** years  
**Warranty**  
(if scheduled servicing is met)

**5** years  
**Capped Price Service Coverage**

**5** years  
**Roadside Assistance**

**5** years  
**WOF Coverage**

T&Cs, KM limits and servicing criteria apply.

**SALES CONSULTANTS**

UWYNN CARTER  
027 444 0507

DYLAN HANSON  
027 326 7211

TIM CLOAKE  
027 243 7353

**FINANCE & INSURANCE CONSULTANT**

AMANDA CALVER  
021 360 895

221 Guyton Street, Whanganui. Phone: 06 348 8850  
email: [sales@trcwhanganui.toyota.co.nz](mailto:sales@trcwhanganui.toyota.co.nz)



# St Anthony's Medieval Fayre this Saturday

St Anthony school and Church community certainly know how to run an interesting gala. Each year it has a medieval theme and this year on Saturday, 17 February, from 11am to 4pm, there will be even more attractions.

Two were new additions last year

which didn't exactly run according to plan. This year, they are back better and promising full action. The first is a Pirate Ship to travel around the premises on land. It was built for Whanganui's Christmas Parade and the maker wanted it to be used and so was happy when approached by St

Anthony's.

Organiser Indy Magnoli says, "We did have some technical problems, but they have been ironed out; the ship is all ready to sail, at least on land on wheels. The kids will love it."

Then there is the Medieval Obstacle Course - 'The Gauntlet.' It is electronically controlled, and last year, the controls were stored overnight in the complex. Unfortunately, someone broke in and stole them. Fortunately, the designer had a spare, which he was able to reprogramme in time, but it failed after an hour.

But as with the Pirate Ship, 'The Gauntlet' is all ready to go. Test it out for yourself - if you are brave enough. "It is really fun," say Indy.

All rides and games are via tickets available on the day. There are discounts for multiple tickets.

Other activities include horse rides, jousting games, a bouncy castle and archery with crossbows. The local Viking group will be there to put on fights complete with appropriate weapons and armour. They will explain the history and will also have a display.

The food is a highlight. Home-made by community members and priced probably far too cheap - but who is complaining. The Church says, "The gala is as much about involving and thanking the community as raising funds for the school." Check out their Angus burgers as well as their curries, food from the Philippines and the cakes.

There will also be second-hand goods, arts and crafts and a lot of enjoyment for everyone. As Indy says, "There will be something for everyone."



## Exhibition and auction of the glass works by Lyndsay Patterson



Lyndsay at work

Lyndsay Patterson was a well-known Whanganui glass artist who tragically died in a motor bike accident on 26 February 2023. Lyndsay's family, supported by Artists Open Studios, have chosen to honour his memory with the establishment of the Lyndsay Patterson Art Foundation, making available future scholarships for young artists.

To raise funds, there will be an exhibition and auction of 12 to 15 of Lyndsay's creations. They will include some unsold items as well as works from private galleries. The Foundation will also gift money from Lyndsay's estate to the scholarship fund.

The exhibition opens at the Community Arts Centre in the Awa Room, which is the one facing the river. It will open on Friday, 15 March, at the same time the 'Starting Point' exhibition for the Artist Open Studio opens. The auction will take place on Friday, 22 March, starting at 6pm. Artist Open Studios are

proud to host this auction as a way to celebrate Lyndsay's life and also because he was one of the original trustees of AOS and remained a member of the Trust until his death.

Lyndsay graduated in

1999 with a BFA from the Wanganui Polytechnic. He was a founder and co-owner of the well-known Chronicle Glass Studio in Whanganui and was a regular participant in the Artist Open Studios event.



## Whanganui

3pm 23 - 11am 24 March 2024  
Cook Gardens, Whanganui

- Yoga Under the Stars
- Live Bands
- Silent Disco
- Candlelight Vigil
- Outdoor Movie
- Celebration Lap

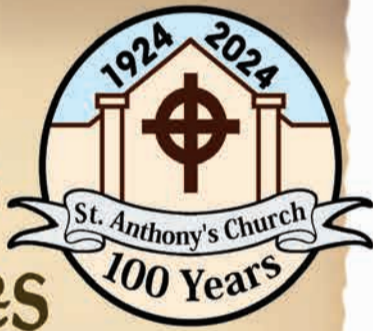
AND MORE!

SIGN UP TODAY AT  
[relayforlife.org.nz](http://relayforlife.org.nz)

# medieval fayre



Fresh food  
Fun games  
Amazing prizes  
Live music



Archery, Pirate Ship & Sword fighting  
Bouncy Castle, Axe Throwing & horse Rides

MARKET PLACE

- Arts & Crafts
- Second hand goods
- plants, produce, & pickles



free Admission  
all are welcome!

Sat, 17th February, 11am-4pm  
St. Anthony's School, 88 Alma Rd



"Professional, cheerful, knowledgeable agent in all aspects. Rachel felt like a close friend. I would happily choose Rachel again."

Fairer Fees  
Smarter Real Estate  
Better Service

Rachel Miller  
027 526 5969  
rachel.m@arizto.co.nz





# Ever wanted to make cheese, jams, vegan or grainy foods? Short courses available in Whanganui

The RCP has had articles about how to use surplus summer fruit and vegetables written by previous head of Cookery and Hospitality at UCOL Whanganui, Gina Guigou. (next week we have an article on what to do with surplus plums)

Gina is also presenting the following programmes with Community Education.

## 1. Cheese Making

If you are planning to make your own cheeses, then this class is for you. Learn the skills and gain hands-on experience required to make

soft cheeses, such as feta, haloumi, mozzarella and ricotta. The class is a full day in the kitchen, preparing and cooking your culinary delights.

One session on Saturday 13 April, 9 am – 3 pm. \$150

## 2. Plant Based Cookery

Whether you're a seasoned chef or a kitchen novice, this plant-based cookery programme is designed for everyone eager to embrace the vibrant world of plant-based cuisine.

You will learn vegan and vegetarian recipes;

how to make nut butters, crackers, pantry items and making the most of what you grow in your garden. There will also be the opportunity to make some sweet treats without using refined sugar.

2 Sessions Saturday and Sunday 9 am – 3 pm, 9 and 10 March 2024. Cost is \$245 – Ingredients supplied

## 3. Preserves and Jams – Winter Stores with Summer's Harvest

Using excess fruit and vegetables from Summer gardens, Gina will teach you how to make jams, sauces, fruit pastes,

relishes and chutney for Winter stores. Don't let those Summer fruits rot on the ground. Fling them in the freezer and learn how to transform them into something delicious; just like our Grandmothers did.

One Session on Saturday 9 am – 3 pm, 24 February 2024. \$135 – Ingredients supplied

Gina is also doing the following presentation with La Fiesta.

## Get your Grains

Spend the day with Gina making your own selection of muesli, granola and crackers. You will take home everything you make on the day and have the skills to do it all again when your bounty



runs out. All ingredients included.

One Session on Sunday

3 March, 9 am to 3 pm. The cost is \$95.

All bookings can be

made on <https://communityeducation.nz/collections/taste>.

## Musical Jam Sessions this Sunday evening



Joe Kennedy, young tenor saxophone players from Taihape.

Photo credit: Wade Monteba

Jazz is about music, community, improvisation, co-operation, education, communication, negotiation and the journey toward self-realisation. It is also about enjoying life to the full. So it is no wonder that the jam sessions at Porridge Watson on the third Sunday of the month are being embraced by restaurant bar owner Tony Sundeman, local musicians and music lovers alike.

The Chris Dann Trio are the host band, with Berndt Reiss on bass and Michael Franklin-Browne on drums supporting the ever creative Chris Dann

on electric piano. Chris is at home playing jazz, classical and everything else.

Then there are the musicians who come along to 'sit in' with the band. You are likely to hear musos joining in on saxophone, flute, trumpet and guitar. And don't forget the vocalists. Then there is the ukelele, bassoon and oh yes – didgeridoo. The sessions are always different, and change according to who turns up on the night.

There is one aim, and that is for the musicians to make some wonderful sounds together for the audience to enjoy. Everyone is welcome, young

and old.

The next session is on Sunday, 18 February. The music kicks off just after 6pm, and thanks to Tony's support, there is no cover charge. For those of you who have yet to visit Porridge Watson, there is a wide selection of all types of drink, and a restaurant with some of the best burgers in town.

Come down and check it out. And if you play an instrument, bring it with you. You might well be moved to play along.

IJD Jam Session, Sunday 18 February, 6pm @ Porridge Watson, 30 Drews Ave.

## 3

## Whanganui to Bulls safety improvements drop-in sessions

State Highway 3 (SH3) between Whanganui and Bulls is a key route for locals, tourists and freight, but too many people are being killed or seriously injured in crashes while travelling it.

Between 2019 and 2023, there were 159 crashes on SH3 between Whanganui and Bulls which resulted in 7 people dying and 19 being seriously injured.

To make this road safer for everyone, we're planning to make safety improvements to the road, which will include flexible median barrier.

If you have questions about these safety improvements, or would like to learn more about the project, come and chat with the project team at one of our upcoming drop-in sessions.

**Whanganui:** Pioneer Room, Whanganui War Memorial Centre, Tuesday 20 February 2024, 4-7pm

**Bulls:** Bulls Town Hall, Te Matapihi, Thursday 22 February 2024, 4-7pm

At the Bulls session, you'll also have the chance to speak with members of the SH1/SH3 Bulls to Sanson safety improvements project team.

For more information: visit [nzta.govt.nz/whanganui-to-bulls](https://nzta.govt.nz/whanganui-to-bulls) or email [sh3.w2b@nzta.govt.nz](mailto:sh3.w2b@nzta.govt.nz)



# ENROL NOW SPACES FILLING FAST!

Contact us now!

We have courses in:

- Animal Care
- Rural Animal Technician
- Carpentry Level 3
- Agriculture Level 3 - Dairy



**TRAINING FOR INDUSTRY**  
CHALLENGE YOUR FUTURE | WHAKAAEHIA TO WERO

[www.agctraining.co.nz](http://www.agctraining.co.nz)  
**0800 348 8215**





To gift a Safe Night go to:  
[www.safenight.nz](http://www.safenight.nz)

only  
**\$20**

GIFT A  
**safe night**

# A \$20 Safe Night helps a woman and her children escape family violence

Whanganui Women's Refuge is hoping to benefit from a new national initiative asking people to donate a '\$20 Safe Night'

in the cause of keeping women and children safe. New Zealand has one of the highest rates of family harm in the OECD

and Women's Refuge needs the support of the community to maintain its important work.

Donations to the '\$20 Safe Night' can be made through the safenight.nz website and the money will be used to cover the running costs of safe houses.

There is one four-bedroom safe house in Whanganui and local Women's Refuge manager Jo Voice says it plays a vital role in the organisation's mahi.

"We have fully furnished the safe house and we

have to cover rent and be able to provide clothing, food and drink, hygiene products, a cellphone etc if necessary," says Jo.

"It is set up so that if someone arrives with nothing, having fled an assault, we can look after them. Often it is the case that that person cannot go back home and get their personal possessions."

Since July 1 last year, 61 women and children have stayed in the Whanganui safe house.

"Sometimes it is just one night, but sometimes it is

for a few weeks – however long they need to find safe accommodation."

Jo said that domestic violence continued to be a serious issue in the Whanganui community.

"We are busy, and over Christmas we were working flat out ... we were extremely busy.

"There are relationships that are already vulnerable and then that is exacerbated by the rising cost of living, the housing crisis, people coming out the other side of COVID, mental health problems...

"It all adds to the complexity of our work."

As well as the funds raised by the '\$20 Safe Night' appeal, Whanganui Women's Refuge is always grateful for donations of food (non-perishable and not past the sell-by date); hygiene products; and new socks and underwear.

Well-known Kiwi actress Dame Miranda Harcourt, whose career

covers Shortland Street to The Hobbit movie, is a national ambassador for Women's Refuge and is promoting the '\$20 Safe Night' appeal.

"It's good to relax, catch up and enjoy some kai on a summer's evening. But we know there are far too many women who only feel fear as the sun sets, knowing they could face violence at any time."

## LEGAL ADVICE, INFORMATION ASSISTANCE & EDUCATION



COMMUNITY LEGAL ADVICE WHANGANUI

Proud to support Women's Refuge - Gift a Safe Night

Drop in and see us at:  
 Suite 2, 236 Victoria Ave, Whanganui  
**Phone 348 8288**

## Proudly supporting Women's Refuge Whanganui



Partnering with parents, connecting families, building healthy communities together in Whanganui  
[www.wovenwhanau.org.nz](http://www.wovenwhanau.org.nz)



Proud to support **WOMEN'S REFUGE**

Phone 06 348 2099  
[www.aplusb plumbing.co.nz](http://www.aplusb plumbing.co.nz)



61 women and children have stayed in the Whanganui safe house in the last six months



We are gifting a safe night to women's refuge

With every vacant install for all of 2024



**Succulent Styling Home Staging**

[www.succulentstyling.co.nz](http://www.succulentstyling.co.nz)

## Whanganui Girls' College

Proudly supporting Women's Refuge "Gift a Safe Night"

[www.whanganui-girls.school.nz](http://www.whanganui-girls.school.nz) 06 349 0944



Where Girls Shine



## Jigsaw whanganui

kaupapa whānau - thriving children, flourishing families

Proud to support Women's Refuge

Our support network is here to help all whānau



We're here to talk  
 Tel 06 345 1636

[jigsawwhanganui.org.nz](http://jigsawwhanganui.org.nz)

Ph 06 345 1636 | Suite 10, 236 Victoria Ave, Whanganui  
 Email: [admin@jigsawwhanganui.org.nz](mailto:admin@jigsawwhanganui.org.nz)





# Grey Power Wanganui & Districts NEWSLETTER - February 2024

## President's corner

Welcome to our new newsletter which will be published in the River City Press three to four times per year. This method enables us to reach out to other interested members of the community as well as communicating with our members – and at a cheaper rate than the cost of printing and postage.

There will be spare copies available at the Grey Power office in Club Metro.

**Covid** – Unfortunately, Covid is back nationwide, and we recommend that if you are feeling unwell, check in with your doctor or the health line for information on 0800 611 116.

**Grey Power Office** – As from January the office at Club Metro is open on both Tuesday and Thursday from 11am to 1pm. Please feel free to join us for any questions or concerns you may have. We are happy to assist where we can or point you in the right direction.

**Grey Power Electricity** - is a partnership between the Grey Power Federation and Pulse Energy. Established in 2013, Grey Power Electricity is committed to provid-



President Nerrily Frith

ing Grey Power Members with low cost electricity, gas, broadband and home phone plans.

Grey Power Electricity is designed especially for Grey Power Members and gives back to the Grey Power Federation for every Member that becomes an electricity customer with them.

For more information go to: <https://www.grey-power.co.nz/grey-power-electricity>.

**Membership** – Memberships are due for 2024/25 from 1 April.

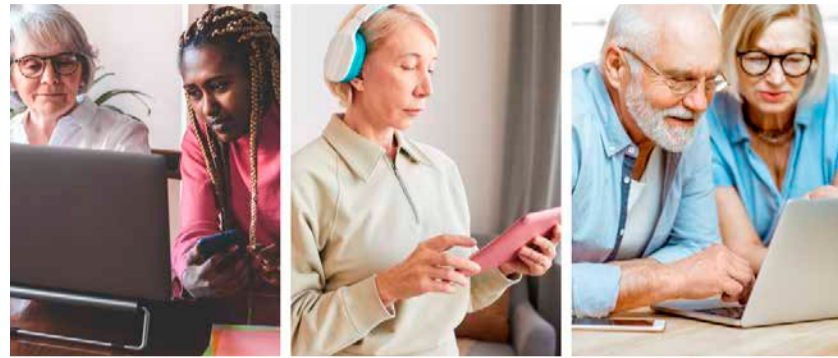
The cost is only \$25 for a single and \$40 for a couple.

Payment can be made by:

- Direct credit to Grey Power Wanganui 38 9006 0435305 02
- Posting the amount to PO Box 4197, Whanganui 4541
- Making payment at the office of Club Metro, 13 Ridgway Street, Whanganui.

Look forward to meeting you all soon. You can contact me on 027 458 6480, Nerrily

## Online Digital courses



There are opportunities in Whanganui to upgrade your digital knowledge. The District Library offers a free course 'Digital Skills for Seniors.' The next course to be held at the Alexander Library for those 65 and over starts on Friday 19 March and is from 10am to 12noon. There are also opportunities with Age Concern and the Whanganui Learning Centre.

## St John Ambulance Scheme

If you call for an ambulance, the cost will be at least \$98. However, by becoming a member of the St John's Ambulance scheme, your ride in the ambulance is free. The cost for an individual is only \$55

per year. A joint membership of two people living at the same address is \$75 per year. There is also a household membership of three and over people living at the same address is \$90.



## Other matters

We will put a calendar of events together for this year shortly, but would like your input first. Please get in touch with us with your ideas. These could include trips, speakers, morning teas – whatever appeals. Remember this is your group so your ideas matter.

What makes a community 'Age Friendly' is the ability to:

- Be active.
- Feel secure.
- Enjoy good health and the respect of others.
- Continue to participate fully in society, regardless of age.
- Mix with different generations!
- Access local services and parks, attend cultural events and take part in further education.

## Prepare an emergency bag

An emergency bag if you are suddenly taken to hospital can be very useful. It could include a nightie/ pair of pyjamas, dressing gown, medication, slippers etc.



## Members of the Grey Power Board

**President Nerrily Frith**  
Nerrily became President of Grey Power Wanganui & Districts in March 2023. She has lived in Whanganui most of her life and has been the Hostel Manager at Whanganui Girls College, worked for Idea Services Whanganui and Liaison Officer for Brain Injury Whanganui.

She has always been actively involved in a range of Whanganui and national organisations including being President of Brain Injury Whanganui,

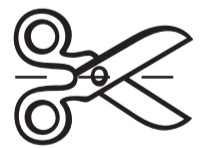
(she is also on their national board), Chairperson of Community House, President of the IHC Association while working for the disability group, People First.

### Members of the Board

The other members of the local Grey Power are:

- Lynne Morris – Membership Officer
- Ngaire Flynn – Treasurer
- Jack Agar – Vice President
- Helen Tilly, and
- Shirley McDonough.

# Join Grey Power Wanganui



First name: .....

Surname (Mr/Mrs/Miss/Ms/Dr) .....

Address .....

Suburb..... Post Code .....

Phone Numbers: Home ..... Mobile .....

Emails .....

*Please bring into the Grey Power Office at Club Metro, 13 Ridgway Street, with payment as explained earlier.*



# Premier winner in New Zealand-wide art competition

By Mark Dawson  
 "I just fiddle around ... when I start I don't know what I'll end up with."  
 Well, last year Whanganui glass artist Rosalind Fitz Patrick ended up as supreme winner in a New Zealand-wide art competition at the Lysaght Watt gallery in Hawera. And now her first solo exhibition is on show at the gallery, running until March 2.

The exhibition is called 805° which is the Celsius temperature needed to fuse glass. Less than 805 and it is not one complete peice, more than this and it can melt and puddle.

Rosalind's work is distinctive, colourful often geometric and regular – the result of very intricate and detailed "fiddling around".

Her passion for fused glass started when she went to a Katie Brown workshop at what is now the New Zealand Glassworks in Rutland Street. "I was hooked. I got a diploma from UCOL in June 2019 and have been doing it ever since."

She was surprised to win the Lysaght Watt Trust Award last May, an award that attracts hundreds of entries in all media from across the country.

"Fused glass is not that well known and it is



Whanganui glass artist Rosalind Fitz Patrick in her workshop.

often put in with sculpture and 3D works.

"I won the 3D section and, as it was so hot, I stepped outside the gallery for some fresh air. I came back and the judge was talking about the supreme winner and saying 'I could see the glow in it'. I was stunned that it was me ... very exciting."

Rosalind has created a lot of new works for the exhibition – which comprises around 40 pieces -- including her take on Art Deco.

She works from home with the garage set up as a workshop which includes a \$7500 kiln imported at some length from the United States.



One of the pieces in the Hawera exhibition.

"I ordered it and then COVID hit and it seemed

to travel around the world. It took a year to get here."

# Local artist to open first ever Wellington-based exhibition



Artist, Melanie Fleet with a small selection of her art

Melanie Fleet, an emerging artist from Whanganui, is set to open her first ever Wellington-based exhibition, "Explosive Empathy," at Thistle Hall on March 4, 2024.

The exhibition features a collection of mixed-media paintings and digital prints that challenge LGBTTTQI+ discrimination and aim to shape social narratives with resilience. As part of the LGBTTTQI+ community, Melanie sees the impact of bigotry and phobias every day and wants to use her art to provoke conversations and encourage empathy.

The exhibition will be showcased during the Wellington Pride Festival, adding to the vibrant and inclusive atmosphere of the event. Being a part of the Pride Festival brings a sense of be-

longing, togetherness, and community to Melanie's work, and she hopes that her art can contribute to the important conversations being had around LGBTTTQI+ rights and visibility.

Melanie Fleet is a mixed media artist based in Whanganui, New Zealand. She is known for her vibrant and thought-provoking work, which often explores themes of identity, equality, and empowerment. Her work has featured in several exhibitions throughout New Zealand, and she has quickly gained a reputation as an artist to watch.

"Explosive Empathy" will be open to the public from March 4-10 2024, at Thistle Hall in Wellington. For more information, please visit [www.melaniefleet.co.nz](http://www.melaniefleet.co.nz)

# Plumber Dan

"We are a local plumbing service provider and we're always ready to assist you."

Experience hassle-free plumbing services with guaranteed success.



**OUR PLUMBERS CAN HELP WITH...**

- Sewer & Stormwater Installations ✓
- Water Filters & Water Softeners ✓
- Wood Burner Installations ✓
- Plumbing Maintenance ✓
- Hot Water Systems ✓
- Free Quotes ✓

021 635 517

[www.plumberdan.co.nz](http://www.plumberdan.co.nz)



# Road naming policy review asks community for directions

Whanganui District Council is seeking community feedback on a review of its Road Naming and Numbering Policy. A pre-engagement survey that closed in August last year gathered initial feedback and provided insights on ways the policy could be improved.

The council's principal policy planner, Justin Walters, says, "This review aims to enhance the existing policy by incorporating community input to ensure a more inclusive and comprehensive approach to road naming and numbering in our district."

"The council's Road Naming and Numbering Policy provides a guideline for the consistent naming and numbering of roads within the district. As part of the review, we've identified opportunities to build on the policy by confirming appropriate themes for road names, establishing a formal road naming panel, and by including the ability to name parks," Justin Walters says.

The current criteria for naming roads are:

- a traditional or appropriate Māori name
- an historical person or event
- significant geographical or topographical features
- the personal name of someone who has given special service to the community.

Community feedback has suggested that names of native flora and fauna also be included as a naming option. Other proposed changes to the existing policy are the formalisation of a road naming panel, and the provision to name parks.

"Officially including the naming panel in the policy will let the panel make decisions on new or unformed roads, as well as make recommendations to the council on the renaming of existing roads or the naming of parks," Justin Walters says. "The panel also provides a forum for the community, Iwi and developers to provide feedback on the naming of roads."

In relation to the naming of parks, Justin Walters says, "The Reserves Act 1977 provides a process for the naming of reserves, although not all spaces operating as parks are classified as reserves for the purposes of the act. While the naming or renaming of a park is not a regular occurrence, it generally follows a similar process in finding an appropriate name."

Consultation on proposed changes to the council's Road Naming and Numbering Policy is open until midnight on Sunday, 10 March 2024. For more information, including how to make a submission, please visit: [www.whanganui.govt.nz/have-your-say](http://www.whanganui.govt.nz/have-your-say)



# Sixth year of Pride Week - affirming diversity and inclusivity

In its sixth year, Whanganui Pride Week is not just a celebration; it's a vibrant affirmation of diversity, inclusivity, and the strength of community. Kicking off next Saturday the 24th of February, this event promises a week full of activities, learning opportunities, and joyous gatherings, reflecting the diversity of the human experience. It's a timely reminder that while Whanganui Pride Week is rooted in the LG-BTTQI+ community's history and struggles for equality, its spirit of acceptance and understanding is something from which everyone can benefit.

This year, Whanganui Pride Week is poised to surpass previous years, both in scale and in the breadth of its embrace. Organizers have meticulously planned a diverse array of events that cater to all ages and interests, ensuring that Pride is not just for the LG-BTTQI+ community but for anyone who believes in a world where inclusivity and equity reign supreme. From an art exhibition that explores the depths of queer identity to workshops aimed at educating and fostering dialogue and events that bring different community members together, the week is designed to be a platform for sharing stories, challenging prejudices, and building bridges.

One of the most remarkable aspects of Whanganui Pride Week 2024 is its commitment to inclusivity. The organizers have gone to great lengths to ensure that the events are accessible to everyone, regardless of physical ability, financial situation, or social background. This inclusivity



is a testament to the belief that understanding and acceptance are not just the responsibilities of the LG-BTTQI+ community but of the entire society. By opening up spaces for everyone to participate, learn, and celebrate, Pride Week acts as a powerful catalyst for change, promoting a culture of empathy and respect.

With 20 events on offer

over eight days, including eight brand new events – Whanganui Pride Week 2024 is set to break all records since it began in 2019. Pride Whanganui Trust Chairperson Christina Emery says, "It's incredible to me the number of visitors we get for the week from outside of the immediate area. This year, we have people coming from as far away

as Australia, Dunedin and Whangarei – and that's just those we know about".

Whanganui Pride Week 2024 is a testament to the power of community, diversity, and passion. See the full schedule now at [pridewhanganui.co.nz/prideweek](http://pridewhanganui.co.nz/prideweek) – some events are close to selling out so make sure you book your tickets now.

## JUST LOOKING

[www.justlooking.nz](http://www.justlooking.nz)

# GRAND REOPENING

136 VICTORIA AVE  
THIS SATURDAY 9:30AM

JOIN US FOR  
**TREATS + GIVEAWAYS**  
AS WE CELEBRATE THE  
GRAND REOPENING OF OUR  
REFURBISHED STORE



136 VICTORIA AVE | WANGANUI | 0800 488 474 | OPEN 7 DAYS

## 10/10

Craig was very personable and easy to deal with, he made us feel totally relaxed about our unique family.  
Carol and Tina

Licensed REAA 2008

**Craig Hanford**  
021 375 075



## Whanganui Girls' College

Proudly supporting our diverse and inclusive community!

[www.whanganui-girls.school.nz](http://www.whanganui-girls.school.nz) 06 349 0944



Where Girls Shine



"To Promote Self-Empowerment Through Peer Support"

Drop In Centre  
Monday to Friday, 9:30am – 3:30pm  
Closed on Public Holidays

M.I.S.T is a safe space for members experiencing Mental Illness

COME JOIN, OUR MEMBERSHIP FEE IS A KOHA

203 Victoria Avenue, Central, Whanganui  
(Entry at the rear off Ingestre St)  
PH: 022 679 5406



# WHANGANUI PRIDE WEEK 2024

## 24th February - 2nd March

[pridewhanganui.co.nz/prideweek](http://pridewhanganui.co.nz/prideweek)

# Pride Week events - open to everyone

### SATURDAY 24 FEB PRIDE HUB + ART EXHIBITION

Sat 24 Feb - Sat 2nd March | 10am-4pm | Pride Hub - 64 St Hill Street  
Local and national artists exhibit their creative talents. EXHIBITION OPENING - Fri 23rd Feb - 5:30pm. Grab event info, merch and resources or just hang out in a safe, inclusive space.

### YOUTH FEST + PRIDE MARKETS

11am-3pm | Majestic Square | FREE  
A safe space for our Rangatahi to hang + an incredible array of Pride products, art and collectibles - for all!

### MOVIE MARATHON - YOUTH EVENT

3-6pm | Pride Hub - 64 St Hill Street | FREE  
Rūrangi + two incredible queer films to inspire and inform.

### SILENT DISCO - YOUTH EVENT

7-10pm | Pride Hub -

64 St Hill Street | FREE  
Grab some headphones & dance till you drop!

### SUNDAY 25 FEB LONG LUNCH ON THE DUBLIN ST BRIDGE

11:45am-2pm | Dublin St Bridge | \$55pp  
Be waited on hand and foot for two glorious hours as you take in the beauty around you.

### QUEERLY BELOVED - ZINE WORKSHOP

11am-2pm | Pride Hub - 64 St Hill Street | FREE  
Contribute to a collaborative Pride Zine with an uplifting letter to a Rainbow person.

### AUTHENTIC YOU

4-7pm | Women's Network - 75 St Hill St | FREE  
Not sure how to express yourself, want some advice, tips and tricks, join us to explore an 'Authentic You'.

### MONDAY 26 FEB THIS IS ME

7-9pm | Women's Net-

work - 75 St Hill St | \$5pp  
Our guest speakers explore what role gender and sexuality has played in their lives.

### TUESDAY 27 FEB GAMES NIGHT

6-9pm | Pride Hub - 64 St Hill Street | FREE  
Be introduced to the world of Dungeons & Dragons or pull the family together for a round of Exploding Kittens.

### WEDNESDAY 28 FEB ROLLER DISCO

4:30-7:30pm | The Rink - 37 Hatrick St West | \$5pp  
A fun family friendly event, pop some skates on and burn off some 80's energy.

### THURSDAY 29 FEB WAIRUA CRUISES

11:45am & 5:45pm | Wairua - 1H Taupo Quay | \$60pp  
Join us for a cruise on the MV Wairua and enjoy the stunning scenery of the Whanganui Awa.

### FRIDAY 1 MARCH WEAR THE RAIN-BOW

All Day | Everywhere  
Wear your rainbow ribbons and badges or go full rainbow from head to toe!

### QUIZ NIGHT

5:30-7:30pm | Lads Brewery - 1 Taylor St | \$5pp  
The Quiz to end all Quizzes! Who will be the 2024 Champion?!

### SPEED MATCHING

8-10pm | Porridge Watson - 30 Drews Ave | \$10pp  
Mates - Dates - Lovers; find any and all at this entertaining event.

### SATURDAY 2 MARCH DRAG BREAKFAST

9:30-10:45am | Mischief - 96 Guyton St | \$50pp  
Start your day the right way with drag performers and Transgender Cartoonist Sophie Labelle.

### PRIDE WALK

11am-12:15pm | Whanganui River Markets | Koha  
Dress loud, dress proud! Bring the family and join us on this annual hiko around the bridges.

### PRIDE PARTY

7pm-1am | War Memorial Centre - Watt St | \$20pp  
From a wedding to burlesque to pole to interpretive dance, and of course show stopping

drag artists.  
The party to end all parties!  
For further information on each events go to the website:  
[Pridewhanganui.co.nz/prideweek](http://Pridewhanganui.co.nz/prideweek)



**LONG LUNCH ON THE DUBLIN ST BRIDGE**  
Sunday, February 25, 11:45am-2pm | Dublin Street Bridge | \$55pp  
Go to website: [Pridewhanganui.co.nz/prideweek](http://Pridewhanganui.co.nz/prideweek) or [Eventfinda.co.nz](http://Eventfinda.co.nz) for bookings

Proud to support PRIDE WEEK  
MON-FRI: 8AM-3PM  
SAT-SUN: 8.30AM-3.30PM

Cnr Dublin & Pitt Sts, Wanganui. Ph 345 0083  
[www.yellowhousecafe.co.nz](http://www.yellowhousecafe.co.nz)

Find us on Facebook

Proudly supporting PRIDE WEEK

Check out our Pride offerings in our La Fiesta festival guide.

Women's Network Whanganui  
Making positive change for women

Check us out on Facebook to find out more.

75 St Hill Street • ph 06 345 6833 • po box 568

WHANGANUI HIGH SCHOOL

Supporting our Community

[www.whanganuihigh.school.nz](http://www.whanganuihigh.school.nz)  
PURNELL STREET | PH 063490178

[pridewhanganui.co.nz/prideweek](http://pridewhanganui.co.nz/prideweek)

24TH FEB - 2ND MARCH

# WHANGANUI PRIDE WEEK 2024

Proud to support Wanganui's Pride Week

# SUBWAY

Let us help cater your next meeting or function

396 Victoria Avenue, Subway St Johns, Wanganui  
06 345 4105

# Jigsaw whanganui

kaupapa whānau - thriving children, flourishing families

Proud to support PRIDE WEEK

Our support network is here to help all whānau

Social Work

Family Harm Programmes

Programmes for Parents

Advice and support information for families

We're here to talk  
Tel 06 345 1636

[jigsawwhanganui.org.nz](http://jigsawwhanganui.org.nz)

Ph 06 345 1636 | Suite 10, 236 Victoria Ave, Whanganui  
Email: [admin@jigsawwhanganui.org.nz](mailto:admin@jigsawwhanganui.org.nz)



# WHANGANUI PRIDE WEEK 2024

24th February - 2nd March

[pridewhanganui.co.nz/prideweek](http://pridewhanganui.co.nz/prideweek)



## DRAG BREAKFAST

Saturday, March 2, 9:30-10:45am | at Mischief - 96 Guyton St | \$50pp

Start your day the right way with drag performers and Transgender Cartoonist Sophie Labelle.

Go to website: [Pridewhanganui.co.nz/prideweek](http://Pridewhanganui.co.nz/prideweek) or [Eventfinda.co.nz](http://Eventfinda.co.nz) for bookings



## PRIDE PARTY

Saturday, March 2 - 7pm-1am | War Memorial Centre - Watt St | \$20pp. From a wedding to burlesque to pole to interpretive dance, and of course show stopping drag artists. The party to end all parties!

Go to website: [Pridewhanganui.co.nz/prideweek](http://Pridewhanganui.co.nz/prideweek) or [Eventfinda.co.nz](http://Eventfinda.co.nz) for bookings

QUOTE: "Sometimes, making the world a better place just involves creating space for the people who are already in it."

- Jodi Picoult, author

## PRIDE WALK -

Saturday, March 2, 11am-12:15pm | Whanganui River Markets | Koha  
Dress loud, dress proud! Bring the family and join us on this annual hiko around the bridges.



Proudly supporting  
**Pride Week**

396A Victoria Avenue,  
Whanganui.  
Ph (06) 348 0089

BECAUSE BOOKS  
SHOW US EVERY  
COLOR OF THE  
RAINBOW.



We are proud to support  
Pride Week and the  
Rainbow Community.

We are providers of  
gender affirming care.



[www.aramohohealth.co.nz](http://www.aramohohealth.co.nz)



SUPPORTING  
**PRIDE  
WEEK**

Youth Fest & Pride Market  
Saturday 24 February  
11am - 3pm  
Majestic Square

[whanganuilibrary.com](http://whanganuilibrary.com)



### 2017 SUZUKI SWIFT GLX

1.4L, auto, only 88,000kms, NZ new, chain driven, bluetooth, cruise control, economical and reliable!



NOW \$13,995

### 2018 NISSAN NOTE PREMIUM

1.2L, auto, top model, alloys, body kit, high seating, practical space, tints, alloys, great price!



NOW \$14,995

### 2021 SUZUKI SWIFT GL

1.2L, manual, NZ new, only 12,800kms, GPS, 1 owner, reverse camera, bluetooth, great savings from new.



NOW \$18,995

### 2016 SUZUKI BALENO RS XT

1.0L, turbo, auto, only 41,000kms, adaptive cruise control, anti collision, tints, alloys, sporty!



NOW \$17,995

### 2020 SUZUKI SWIFT SPORT

1.4L, turbo, auto, only 13,000kms, NZ new, 1 owner, GPS, bluetooth, reverse camera, sporty!



NOW \$28,995

### 2014 NISSAN QASHQAI +2

2.0L, auto, NZ New, 7 seater, bluetooth, alloys, towbar, cruise control, chain driven, great buy!



NOW \$15,995

### 2022 HYUNDAI KONA N

2.0L, turbo petrol, 8 speed auto, 280hp, only 15,000kms, precision tuned suspension, 18" alloys, reverse camera, 3 drive modes.



NOW \$52,995

### 2019 MAZDA 3 FASTBACK

2.0L, auto, L package, very high spec, only 35,000kms, alloys, bluetooth, radar cruise control, great looker!



NOW \$28,995

### 2018 HYNUDAI KONA ELITE

2.0L, auto, NZ new, only 48,000kms, leather, top spec, reverse camera, bluetooth, wireless phone charging.



NOW \$26,995

### 2018 KIA SPORTAGE LX

2.0L, turbo diesel, NZ new, reverse camera, bluetooth, towbar, AWD, parking sensors, nice vehicle.



NOW \$23,995

### 2016 SUZUKI BALENO XG

1.2L auto, only 50,000kms, keyless start/entry, adaptive cruise, tinted, safe and economical.



NOW \$14,995

### 2011 FORD FALCON XR6

4.0L, auto, only 132,000kms, towbar, alloys, cruise control, perfect family vehicle, nice in red!



NOW \$15,995

### 2022 SUZUKI VITARA TURBO

1.4L, turbo, NZ new, auto, only 48,000kms, GPS, bluetooth, reverse camera, great savings off new price.



NOW \$27,995

### 2012 SSANGYONG KORANDO LTD

2.0L, auto, NZ new, only 73,000kms, alloys, bluetooth, cruise control, towbar, tidy condition.



NOW \$13,995

### 2017 MITSUBISHI OUTLANDER PHEV

2.4L, plug in hybrid, top model VRX, NZ new, only 70,500kms, 360 degree camera, very tidy.



NOW \$34,995

### 2023 SUZUKI JIMNY SIERRA

1.5L, auto, 4WD, only 12,500kms, 1 owner, towbar, A/T Tyres, tints, reverse camera, boot tray.



NOW \$37,995

### 2015 FORD TRANSIT SWB

2.2L, manual, diesel, only 156,000kms, low roof, black wheels, roof racks, tints, great tradie vehicle.



NOW \$26,995

### 2013 HYUNDAI SANTA FE

2.2L, diesel, auto, 4WD, tints, alloys, Elite model, smart looking SUV, a great buy!



NOW \$19,995

### 2018 NISSAN CARAVAN NV350

2.5L, petrol, auto, 10 SEATER!, only 42,000kms, electric slide door, high roof, high spec, keyless start.



NOW \$42,995

### 2023 FORD RANGER XLT

2.0L, Bi turbo diesel, 10 speed auto, 2WD, only 3,600kms, hardlid, towbar, alloys, 10.1" touch screen, reverse camera, keyless entry/start.



NOW \$56,995

**NEW FROM \$999 PER WEEK**  
TOTAL PAYABLE \$25,831.17\*\*

**Easy NO DEPOSIT 6.9% P.A. FINANCE**

**Why buy used?** At this low weekly payment you can skip the hassle of a second hand car and drive home today in a brand new Suzuki — you don't even need a deposit! Remember, buying new gets you a 5 year warranty package, roadside assist, and that new car feeling. Hurry, offer available for a limited time.

**SUZUKI**

\*\$99/week based on Swift GL Manual or Ignis GLX Manual, New \$22,990 plus ORC, New \$21,490 plus ORC, Save \$1,500, total amount payable \$25,831.17, nil deposit 6.9% p.a. fixed interest rate, 5 year term, \$10.35 PPSR fee, \$130 UDC loan fee and \$200 dealer origination fee. On-road costs are payable to the Dealer. Suzuki Finance is provided by UDC Finance Limited. Lending criteria, fees and standard terms and conditions apply. Offer available from 1 December 2023 to 31 January 2024. Excludes fleet purchases, demo vehicles and all other promotions. www.suzuki.co.nz

**NISSAN THE BIG 1% APR FIXED ZERO DEPOSIT 24 MONTH TERM\***

NAVARA QASHQAI X-TRAIL

**EXPLORE**

\*Terms and conditions apply

**Tucson Hybrid**  
Book a test drive today

**FREE ELITE UPGRADE**

276 & 330 Victoria Avenue, Wanganui. Phone 06 345 5115



David Jones Motors





# Amdram to benefit from next week's Small Talks event



Terry Lobb's intricate stage set which will feature in the musical Sweeney Todd.

By Mark Dawson  
Whanganui theatre group Amdram celebrates 150 years of showbiz this year, with the musical thriller Sweeney Todd at the Royal Opera House next month, and a production of Oliver at the end of 2024.  
And it hopes to start the year with a cash boost as it will be the beneficiary of the Small Talks event at Heritage House next Tuesday, February 20.  
Small Talks acts as a fundraiser for various local organisations and

features ten speakers who present 15 slides at 20-second intervals while giving a five-minute talk on a topic dear to their hearts. It can be passionate; it can be thought-provoking; it can be hilarious; occasionally it can be downright odd.  
One of the speakers on Tuesday will be Amdram vice-president Terry Lobb who is the set designer for Sweeney Todd and was also the set designer for The Phantom of the Opera production.  
She has designed a

revolving cube which will take centre stage at the Opera House. The piece measures 2900mm square and is 2200mm high, with a staircase and truck (platform) attached to one of the sides.  
The complete unit revolves with the base structure having 38 wheels underneath, and it covers seven different scenes during Sweeney Todd with all four sides and the top being utilised.  
Quite a technical piece, it has trap doors, a revolving chair, ladders, a chute, two cast entrances and exits and one hidden exit for crew and cast.  
Sweeney Todd: The Demon Barber of Fleet Street – set in the late 1880s London -- is a musical thriller with music and lyrics by Stephen Sondheim, and the book by Hugh Wheeler.  
The show runs at the Opera House from March 15-23. Tickets for Tuesday's Small Talks are available at Bayleys Real Estate.



## 30 YEAR ANNIVERSARY

# Mainstreet Whanganui is 30 years old this year



Mainstreet Whanganui precinct marked in blue.

The concept of a Mainstreet organisation for Whanganui was first discussed in the late 1980s. To say that Whanganui's City Centre back then was tired and moribund would be painting a rosy picture. Whanganui was about to get a new shopping mall adjacent to the main retail street. At the same time, there had been business creep from the main shopping district to newer and more advantageously rated areas of the city. With a static population, the town centre was losing out.  
The first step for Whanganui's Mainstreet movement was to recognise that if something was not done, the Central Avenue district would decline and eventually die. Mainstreet Whanganui arose with support from the Retail-

ers Association. Council was to spend money to refurbish and upgrade the main shopping precinct, and retailers wanted to be involved. The result was what was then and still remains one of the best central city upgrades in New Zealand.  
Officially established in 1991, Mainstreet Whanganui may have begun as a lobby group, but today, it is a thriving organisation, that, while continuing to lobby on behalf of retailers, has grown to encompass business growth, preserving Whanganui's heritage, promotional activity, events, central city maintenance, gardens and ongoing beautification projects, meanwhile continuing to ensure that Whanganui's town centre remains one of the most admired in New Zealand.

Whanganui was the first place in New Zealand to have a Mainstreet Group take over the management of the Town Centre. The Founding Committee was:  
- Stephen Lace (Treasurer)  
- Bill Anderson  
- Muriel Beard  
- Ron Lamont

- Max Restieaux  
- Murray Gilbertson  
- Beryl Warnock  
- Rob Vinsen  
- Craig Mills (Chairman)  
- Bruce Dickson  
- Robin Winter  
  
- supplied by Geoff Follett, membership and Design for Mainstreet

### LETTER TO THE EDITOR

**Photo brings back memories**  
Dear Editor,  
The Castlecliff tram photo on the front page of the February 8 edition brought back many memories - and gave me a delightful surprise when I recognized my sister Beverley Ticklepenny (nee Brown) looking at the camera second from left. Beverley died on January 19 in Lower Hutt aged 92.  
Standing on the far left, looking at the camera, is our 'aunty' Molly Hulbert, who lived near the hospital.  
Thank you for the trip down memory lane.  
- Rhona Wright

## Golf results

**Castlecliff 9 Hole Club**  
**Thursday 1 February – Opening Day Multiplying Stableford**  
**Ladies:** Elaine Everitt 39, Anne Cox 35, Rawinia Connors 28  
**Men:** Sam McGregor 44, Rodney Mence 39, Richard Smith 34 c/b  
**Thursday 8 February – Putting**  
**Ladies:** Marilyn Edmonds 15, Elaine Everitt 16 c/b, Janice Donghi 16 c/b  
**Men:** Richard Smith 15 c/b, Allen Wills 15 c/b, Rodney Mence 15 c/b, Ike Edmonds 15 c/b

## Fill the gaps!

**VICTORIA DENTAL**  
Make an appointment today  
**06 345 3222**  
Victoria House  
1a Rutland Street, Wanganui

**WE BUY AND SELL VINYL RECORDS, TAPES AND CD'S**  
**VINYL ROOM**  
56 Victoria Ave Ph 0276444884

**LG**  
**Lockett Gallery**  
Hip Hip Hooray Mainstreet from Lockett Gallery  
Current exhibitor Jenny Brown, textile artist  
"Inspired by Illustration"  
65a Guyton St, ph 021 2927 417

**Paiges™**  
THE BOOK GALLERY  
**Ka pai Mainstreet!**  
With a huge vote of thanks for keeping Whanganui's CBD in tip-top condition.  
60 Guyton Street, Whanganui 4500  
Phone 06 348 9095





# MAINSTREET WHANGANUI

# 30 YEAR ANNIVERSARY

## Mainstreet vouchers

Mainstreet Whanganui's 30th anniversary comes with a sweet note of success: the revitalised Aroha voucher program. Since its December 2023 relaunch, it's already generated a neat \$8,350 in local spending, which will offer some comfort to businesses during the traditionally quiet

February. "Aroha vouchers aren't just about deals," says Charlie Meyerhoff, Business Promotions at Mainstreet Whanganui. "They're about showing love for our local businesses, the lifeblood of our city centre. Every voucher spent keeps dollars circulating here, strengthening our com-

munity from the inside out." Think of it like this: you buy a voucher and use it at any of the 50+ participating shops, cafes, and service providers. From treating yourself to a delicious meal to finding the perfect gift, you're not just supporting a business; you're fuelling a vibrant downtown vibe.

The program's impact goes beyond the bottom line. It fosters a sense of community, reminding us of the hidden gems and diverse offerings right in our own backyard. By putting our money where our hearts are, Aroha vouchers become more than just a purchase – they become a celebration of Whanganui's unique spirit. Mainstreet Vouchers can be purchased through i-site, Taupo Quay.

The top block of Victoria Avenue prior to Mainstreet Whanganui and the beautification



The fountain installation, pedestrian crossings and gardens being installed in the bridge block area.

### AROHA LOCAL VOUCHERS

Available from the Whanganui I-Site



Thanks Mainstreet for the hardwork you have done for the community.

### ANDERSONS Menswear

65 Victoria Avenue, Wanganui  
Ph 345 5220

### & noire

92 Victoria Avenue, Wanganui  
Ph 347 8214

### Spoilt Nail & Beauty Salon

2 Glycolic Face Peels	normally \$100 NOW \$80
Lash Lift and Tint	\$55
Dermaplaning Facial	\$39
Shellac Gel Nails & Brow Shape	normally \$67 NOW \$40
Eyelash Tint, Brow Tint & Shape	normally \$37 NOW \$30

Botox and fillers are available - please enquire

174 Victoria Ave, Wanganui  
Bookings ph 347 8092 or txt 022 0533 165



### CACTUS CREME CAFE

More than just a cafe. Freshly baked everyday.

## A Popular Main Street Cafe In Town

Congratulations Mainstreet on your 30th Anniversary!

Breakfast and lunch menu available all day

- Café Plus • Real Fruit Smoothies • Fresh Juice
- Hot & Cold Drinks • Real Fruit Ice Cream
- Vegan and Gluten Free Options

Dine-in and Takeaway available

All baked freshly in store each day using only top quality ingredients



OPEN 7 DAYS  
Mon-Fri, 7am - 4pm  
Sat & Sun, 8am - 4pm

87 Victoria Ave, Wanganui | Ph 06 348 0560  
(Free parking available in the Farmers complex)



- Photo Kiosks
  - Digital Reprints
  - Photo Albums
  - Photo Frames
  - Passport photos
  - Digital accessories
  - Photocopying
  - Scanning
  - Binding
  - Laminating
  - Trophies
  - Custom Framing
- Cartridge World

**PRINT FROM YOUR SMARTPHONE**

Instore or order from home with our app

**COPY & PRINT**

Fast & efficient laser photocopying & emailing service

ONE STOP PHOTO & PRINT SHOP

**PERSONALISED GIFTS**

Made instore, no waiting weeks for your order!!

- > Capture
- > Print
- > Personalise

Whanganui Photo & Print  
143 Victoria Ave  
Whanganui  
Phone 06 345 6144  
www.wphoto.nz





# MAINSTREET WHANGANUI

# 30 YEAR ANNIVERSARY

## From baby steps to leaps and bounds - let the work begin

Mainstreet Whanganui takes great pride in being responsible for putting into action the upgrade and regeneration of the Town Centre, starting with a Beautification Fund meeting and constitution of how and what works were to be done.

At the Christmas parade in 1992, Mayor of the time, Chas Poynter led the parade on a white horse and cut the ribbons formally opening stage one of the Avenue upgrade. Well exceeding expectations, thousands appeared at opening. Robin Winter, Mainstreet Whanganui's co-ordinator at the time said "Everyone is a beneficiary of business growth and improvements in the central city, and that is why Mainstreet has worked with the district council in the Avenue development".

Under the watchful eye of Bruce Dickson, the upgrade took years to complete and achieved positive results with Mainstreet Whanganui's



Major refurbishment of the CBD began in the early 1990s.

vision taking hold. The structural revitalisation of the city centre was building a positive vibe and sense of pride that spread through the community.

- supplied by Geoff Follett, membership and Design for Mainstreet

Alongside the Structural revitalisation was Promotions, Marketing & Events. This was also recognised as a priority: targeting and marketing the

town centre to locals and visitors alike through its particular

identity, special events and activities and retail promotion.

## Fantastic response to events

**We have friendly staff and an extensive range of quality used goods.**

**Come and see us today.**



**OPEN 6 DAYS - Monday to Saturday**

**163 Victoria Avenue, Whanganui. Phone 345 2139**

## Congratulations on 30 years Mainstreet Whanganui!

*Proud to support local!*

**Harcourts Whanganui**

06 349 0883

[www.whanganui.harcourts.co.nz](http://www.whanganui.harcourts.co.nz)



Rivercity Realty Ltd Licensed Agent REAA 2008.

## helloworld Travel expanding to cope with demand

The travel bug has really caught hold in Whanganui, with helloworld Travel enjoying a huge surge in customers.

The business at 56b Victoria Avenue was launched by sisters Casey Graham and Kylie Henare in July last year with the anticipation of gradual growth.

"We thought it would take a while to crank up but we are far busier than expected," says manager Kylie.

The clamour for overseas trips is largely due to the end of COVID restrictions and the closed borders, says Kylie.

"People have got all their DIY and home improvements done during lockdown and now they want to get away. There are a lot of people wanting to visit friends and relations whom they couldn't get to see during the pandemic.

"We are seeing a big increase in long-haul trips to Europe, and a lot of multi-generational families heading away together. However, travel has become more complicated with a lot of changes since COVID and new requirements coming in, as well as disruptions to flight schedules.

"People appreciate a local travel agent who can sort out those things for them. They want someone they can trust and it gives them peace of mind."

Another trend in the travel business is people booking well in advance.

Kylie cites the Pacific islands as an example. "The islands are getting really full, really quickly, and people now have to book way ahead, often going on a waiting list before the flight schedules are released."

Kylie can call on 18 years' experience in the travel business, although she had three years out of the busi-

ness as the COVID pandemic devastated the industry.

She is now enjoying the positive mood among travellers keen to venture overseas and the seven months that helloworld Travel has been operating have seen the addition of two staff members.

"And we are so busy that we are now looking for more staff."



**Service with a smile from helloworld Travel's Katy O'Rourke, Saskia Bloot and Kylie Henare.**



**helloworld TRAVEL**  
THE TRAVEL PROFESSIONALS

56B Victoria Avenue, Whanganui  
Phone: 06 345 1899

[whanganui@travel.helloworld.co.nz](mailto:whanganui@travel.helloworld.co.nz)

Congratulations **Mainstreet** on your 30th Anniversary!

**Gatshack** MUSIC

Cnr Ridgway & St Hill Streets, Wanganui  
Tel. (06) 345 4789  
Email: [craig@gatshack.co.nz](mailto:craig@gatshack.co.nz) [www.gatshack.co.nz](http://www.gatshack.co.nz)

**HAIR BY DESIGN**

**JAX HAIR STUDIO**      **JAX ENSOMME**

51A RIDGWAY STREET 347 2008      114 SOMME PARADE 343 1225





# The Great Recliner Sale

## Buy one recliner & get the second **HALF PRICE!**\*

**ON NOW!  
ENDS FEB 26<sup>TH</sup>**

**LONG LIVE THE LAZY™**  
LA Z BOY®

[www.la-z-boy.co.nz](http://www.la-z-boy.co.nz)

\*T&C's apply. Participating stores only. Discount applied to the product with the lowest or equal value price. Prices & promotions may differ between stores. Please see your nearest La-Z-Boy store for more details or go to la-z-boy.co.nz



**Anika**  
Rocker Recliner  
*In Highroller Tuxedo Fabric.*



Lumbar support

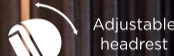


Adjustable headrest

RRP **\$1999\***  
Get the second for **\$999\***



**Atlanta**  
Recliner & Footstool  
*In iBroderick Seaglass Fabric.*



Adjustable headrest

360° swivel

RRP **\$2999\***  
Get the second for **\$1499\***



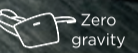
**Dallas**  
Power Recliner  
*In Andros Cloud Leather.*



Power headrest



Power control



Zero gravity

RRP **\$3499\***  
Get the second for **\$1749\***

UP TO

# Half Price.

Find your best sleep yet with Sleepyhead Serenity Peace and Essence.



**20% off.**

Serenity Peace Queen Set

From **\$2,079**



**50% off.**

Serenity Essence Queen Set

From **\$2,799**



**50% off.**

Chiropractic HDX Queen Set

**\$3,799**



\*Offer valid to 27.02.24 or while stocks last. Discount offers apply to selected beds and bedding only, prices as marked. Offers exclude Everyday Dream prices, run outs, clearance stock (unless otherwise stated) and not to be used in conjunction with any other offer. See in-store for details. We reserve the right to correct errors and misprints and to change product specifications. All products are advertised in good faith and will be available, except in circumstances beyond our control. Product ranges vary between stores and some products are available in selected stores only.

**100%**  
BedsRus

**DIMOCKS HOMESTORE**  
PH 06 348 4877 | 190 VICTORIA AVE, WANGANUI

**OPEN  
7 DAYS**





**MAINSTREET  
WHANGANUI**

**30 YEAR  
ANNIVERSARY**

# Maintaining what we have and adding value



Some of the Mainstreet maintenance team working on the flower beds in the town centre

In 1994, Whanganui in Bloom was to change the face of an already enhanced Victoria Avenue and increase the beautification of the town centre. The project cost for the 1994-95 year was \$74,000 of which almost \$20,000 had come from the Business Development Board.

2001 saw another integral part of Mainstreet Whanganui being

developed as Mainstreet Operations was brought in-house. This is one of the main reasons Whanganui Town Centre is one of the most vibrant in New Zealand.

Des Warahi, general manager of Mainstreet, explains the regular maintenance programme that keeps the CBD looking clean and tidy, saying, "While you are probably still sleeping, we have staff starting as

early as 3am working on cleaning the Town Centre area. This is why you will often not see anyone cleaning but while driving to work the footpaths, gutters and parts of the road are clear from any signs of debris or mayhem from the night before.

"We maintain the areas of the Whanganui CBD throughout the day, which includes sweeping streets, clearing bins

and general maintenance of town assets like the bollards and gardens."

The flower beds of the Town Centre are scrutinized daily also. Great pride is taken to ensure the displays are current, colourful and maintained to a high standard.

supplied - Geoff Follett, membership and Design for Mainstreet

Congratulations Mainstreet on your 30 year anniversary.

*Thistles*  
SWEET SHOP

136 Victoria Ave  
Ph 345 0143

Find us on Facebook  

*CRICKLE CREEK*  
• TRADING •

Buying and Selling

Crickle Creek Trading has a fantastic range of Vintage clothing and accessories as well as our eclectic range of Retro, Antiques & Collectables.



142 Victoria Avenue, Whanganui



The stunning gardens last spring in the Mainstreet area



**WANT TO TAKE THE STRESS OUT  
OF MANAGING YOUR TABLETS?  
LET US DO IT FOR YOU...**

Ask us about blister packaging today!  
Free for those aged 65+  
Free delivery if required within the city limits.

Monday - Friday, 8.30am - 5.30pm  
Saturday, 9am - 2pm

**PHARMACY 145**

145 Victoria Ave, Whanganui • 06 345 8666  
email: pharmacy145@hotmail.com

*Thai Villa*

Authentic Thai Cuisine • BYO wine is welcome

**LUNCH SPECIAL**

Thursday to Saturday, 12noon-2.00pm

was \$22.90 Now only \$19.00 for all Stir Fry and Curry dishes.

**TUESDAY & WEDNESDAY NIGHTS SET MENU**

2 Courses including a drink \$36.90 per person

7 Victoria Ave, Whanganui, call 06 348 9089 OR  
visit our website [www.thaivillawhanganui.co.nz](http://www.thaivillawhanganui.co.nz)







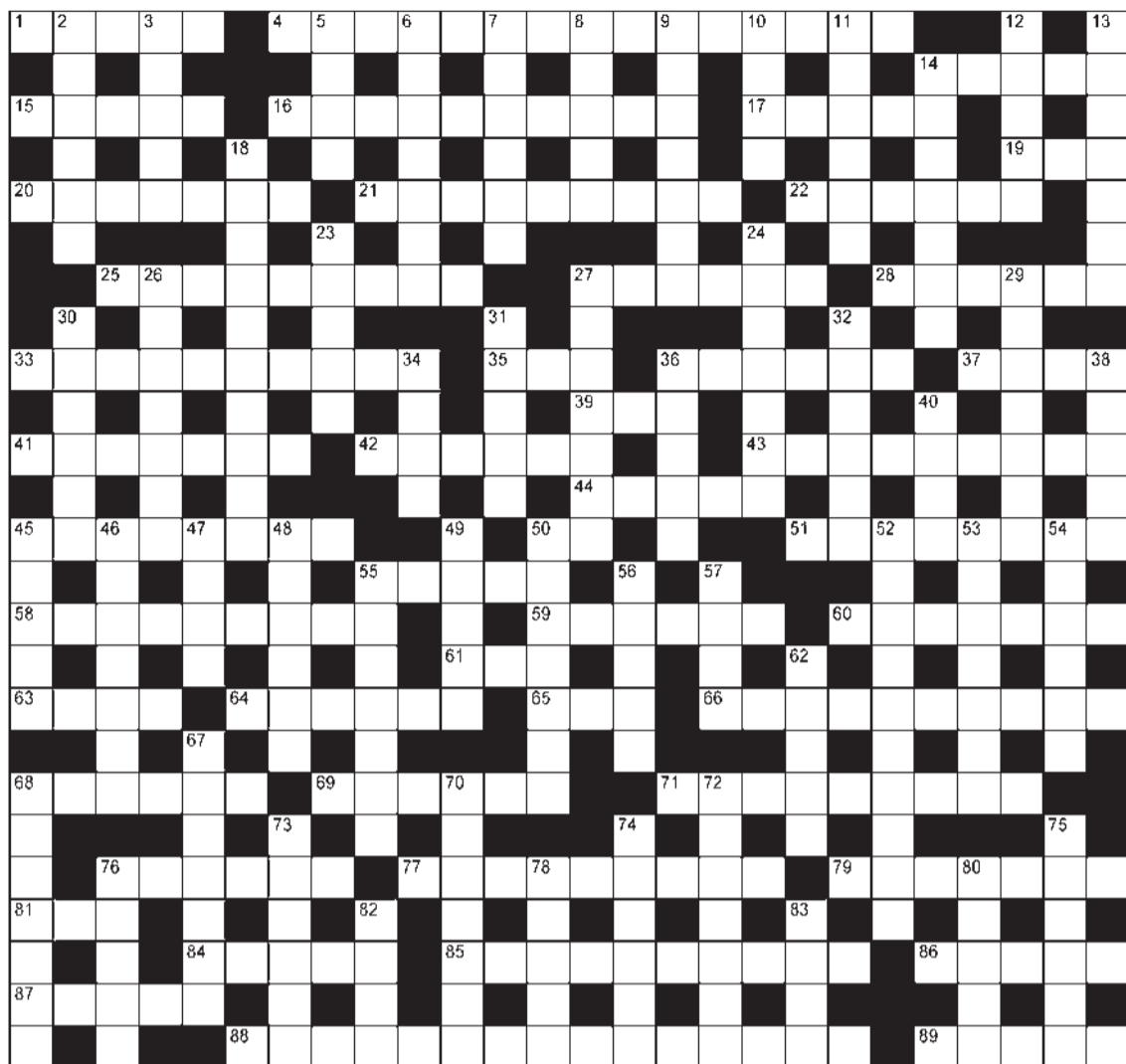
# Jumbo crossword

## ACROSS

- 1 Take an oath (5)
- 4 Safely secured away (5,4,3,3)
- 14 Sudden forceful flow (5)
- 15 Room on ship (5)
- 16 Poet-folk singer (10)
- 17 Alcoholic drink (5)
- 19 Infection liquid (3)
- 20 Illness with spots (7)
- 21 Graceful dancer (9)
- 22 Socially awkward (6)
- 25 Weather instrument (9)
- 27 Meat pin (6)
- 28 Argument (6)
- 33 Lies (10)
- 35 Night bird (3)
- 36 Profited (6)
- 37 Qualify (4)
- 39 Metal (3)
- 41 Germ (7)
- 42 Eastern temple (6)
- 43 Retinue (9)
- 44 Wanderer (5)
- 45 Equestrian event (8)
- 50 Mother (2)
- 51 Base for statue (8)
- 55 Fusillade (5)
- 58 Conveyance for skiers (9)
- 59 Maintenance (6)
- 60 Corridor (7)
- 61 Impair (3)
- 63 Place in position (4)
- 64 Barter (6)
- 65 Short sleep (3)
- 66 Predecessor (10)
- 68 Time of most power, popularity, vigour (6)
- 69 Fix (6)
- 71 Bolted to avoid arrest (9)
- 76 Sewing thread (6)
- 77 Seasoned (9)
- 79 Make reference to (7)
- 81 Mineral spring (3)
- 84 Surrendered up (5)
- 85 Insignificant (10)
- 86 Rudimentary (5)
- 87 Bedlam (5)
- 88 Whatever the weather (4,4,2,5)
- 89 Brimless soft hat (5)
- 30 Sword (6)
- 31 Intestine part (5)
- 32 Spirit, courage (6)
- 34 Joint line (4)
- 36 Garden figure (5)
- 38 Shoplift (5)
- 40 Fool (4)
- 45 Wharf area (5)
- 46 In a precise manner (7)
- 47 Convinced (4)
- 48 Musical instrument (6)
- 49 Hold responsible (5)
- 50 One at a funeral (7)
- 52 Exact lookalike (4,6)
- 53 Hush (7)
- 54 Flowering shrub (6)
- 55 Reel (7)
- 56 Misses out (5)
- 57 Cow flesh for eating (4)
- 62 Sunken vessel (5)
- 67 Strategy (7)
- 68 Church cushion (7)
- 70 The capital of US's Georgia (7)
- 72 Stain (7)
- 73 Black magic (6)
- 74 Subordinate (6)
- 75 Submissive, compliant (6)
- 76 Waterway (5)
- 78 Animal products abstainer (5)
- 80 Commerce (5)
- 82 Chopping tool (4)
- 83 Open pastry (4)

## DOWN

- 2 Enervate (6)
- 3 Assumed name (5)
- 5 Standard (4)
- 6 Do like (7)
- 7 Legally answerable (6)
- 8 Group of singers (5)
- 9 Organise (7)
- 10 Peace symbol bird (4)
- 11 Neared (anag)(6)
- 12 Complaint (5)
- 13 Deep in thought (7)
- 14 Small soft suitcase (7)
- 18 Fear and hatred of foreigners (10)
- 23 Snake poison (5)
- 24 Went to bed (7)
- 26 Soaks up (7)
- 27 Sultan's wife (7)
- 29 Stubbornly resolute (7)



We do the *home* work for you.

**Ngaire Eyers Simms** M 021 033 7711 P 06 349 0883

**Hans Vanderschantz** M 027 245 3532 P 06 349 0883

Harcourts Whanganui Licensed Agent REAA 2008

**Harcourts**

## SIMON SHUKER'S CODE-CRACKER Extra 796

EACH number in our Code-Cracker grid represents a different letter of the alphabet. For example, today 15 represents D, so fill in D every time the figure 15 appears. You have one letter in the control grid to start you off. Enter it in the appropriate squares in the main grid and solve the starter word. Fill in other squares in the main and control grids with the found letters and look for the next word. Follow the word trail through the puzzle to its completion. Visit [www.codecracker.co.nz](http://www.codecracker.co.nz)

1	2	2	3	4	5	6	7	8	9	14			
5		10		11		2		5	6	11	12	11	
13	14	15	11	16	11	2	14	8		17		10	
2		18		7		19		19		20	2	20	
10	5	10	18		21	18	3	11	20	22		14	
		18		5		15		10				5	
23	18	15	2	10	5		19	18	3	16	11	6	
2			10		5		8		2				
10			24	14	18	5	8	25		12	6	11	19
18	1	14		8		8		8		6		18	
5		5		20	10	14	3	16	22	18	2	3	
10	5	7	18	8		1		14		16		3	
1		18			26	18	2	1	18	20	10	25	

© Simon Shuker www.codecracker.co.nz

A B C D E F G H I J K L M N O P Q R S T U V W X Y Z

## Sudoku

		6					5	
9		4				3	8	
	8					1		4
	7			1	2			
	5		7	8			4	
			9	5			7	
6		8						1
	2	1				4		3
	9					2		

MEDIUM

Previous solution

8	4	5	7	9	1	3	6	2
2	6	9	5	4	3	1	7	8
7	1	3	8	6	2	9	5	4
5	2	4	3	1	8	6	9	7
3	7	8	9	2	6	5	4	1
6	9	1	4	7	5	8	2	3
9	5	2	1	8	4	7	3	6
1	3	6	2	5	7	4	8	9
4	8	7	6	3	9	2	1	5

Fill the grid so that every column, every row and every 3x3 box contains the digits 1 to 9.

Previous solution

1	Z	A	Q	B	E	D	U	C	T	P	L	X	G
14	J	R	O	W	M	I	H	Y	S	F	N	V	K

## Previous crossword solution

ACROSS: 1 Strayed, 4 Jump the gun, 9 Scholar, 13 Ante, 14 Flakes, 15 Rasher, 16 Partner, 18 Tun, 20 Prison term, 21 Illusion, 22 Gamut, 25 Bovine, 26 Scorch, 28 Aftermath, 33 Prolific, 34 Pamper, 35 Blister, 39 Aqueduct, 40 Morale, 41 Swap, 42 Noted, 43 Naked, 46 Straight as a die, 53 Sewer, 56 Comic, 57 Aria, 58 Artery, 59 Motoring, 62 Faction, 63 Meteor, 64 Twilight, 67 Itinerary, 69 Convex, 70 Banana, 74 Satin, 75 Stubborn, 77 Vociferous, 81 Cur, 83 Boredom, 84 Native, 85 Absent, 86 Cave, 87 Wastrel, 88 Relentless, 89 Remnant.  
 DOWN: 1 Sharp, 2 Retrieve, 3 Delete, 4 Joker, 5 Mast, 6 Tarnish, 7 Easily, 8 Users, 10 Coax, 11 Outcast, 12 Avenue, 17 Downgraded, 19 Foyer, 23 Broccoli, 24 Amble, 25 Bargain, 27 Cuff, 29 Freesia, 30 Plucks, 31 Amoeba, 32 Recede, 34 Poach, 36 Shone, 37 Puck, 38 Taxi, 44 Anorak, 45 Exist, 47 Tart, 48 Amateur, 49 Graded, 50 Tutor, 51 Scrutiny, 52 Erotic, 53 Soothsayer, 54 Whim, 55 Regatta, 60 Coins, 61 Give, 65 Crate, 66 Panorama, 68 Trident, 69 Concept, 71 Pagoda, 72 Polite, 73 Dinner, 76 Blame, 78 Oasis, 79 Scent, 80 Cope, 82 Rage.

## 5x5

A	L	S
R	C	
L	T	E
T	E	
R	E	S

Insert the missing letters to complete ten words — five across the grid and five down. More than one solution may be possible.

S	C	R	I	M
A	R	E	N	A
H	O	V	E	R
I	N	U	R	E
B	E	E	T	S

Previous solution



# Rotary helping to eradicate Polio disease

# U3A movie open to public

Polio once paralysed 7000 children every week. In 2023, that number was just 12 children – over the entire year.

That remarkable transformation is largely due to the Global Polio Eradication Initiative (GPEI) launched in 1988 by Rotary and its partners.

Polio (poliomyelitis in full) is a paralysing and potentially fatal disease that infects the nervous system. It can strike people of any age but mainly affects children under five.

The disease is not curable but can be prevented by vaccines and eventually eradicated – and that is what Rotary set out to do.

Rotary focuses on advocacy, fundraising, volunteer recruitment and building awareness, and led the first initiatives to tackle global polio through the mass vaccination of children.

When the GPEI started, there were 350,000 cases of polio in 125 countries every year. Today, cases have been reduced by 99.9 per cent and just two



countries – Afghanistan and Pakistan – continue to report cases of wild poliovirus.

Afghanistan and Pakistan present formidable challenges that include political instability, highly mobile populations, difficult terrain and, in some cases, vaccine refusal and misinformation.

Getting the support of governments and improving access to remote areas are key in this final push to eliminate polio.

Rotary members have so far contributed more than \$2.2 billion and countless volunteer hours to protect nearly three billion children, and its advocacy has seen governments contribute more than \$10 billion.

Rotary is now committed to raising \$50 million each year for polio eradication, and the Bill & Melinda Gates Foundation has pledged to match that two-to-one. That is a total commitment of \$150 million every year.

This money will provide much-needed operational support, medical workers, laboratory equipment and educational materials. Governments, corporations, and private donors all play a part.

More than one million Rotary members have given time and money to the cause, and hundreds of its members are working with health officials on vaccination programmes.

Rotary members work with UNICEF and other partners to prepare and distribute information materials for people in areas that are isolated by conflict, geography or poverty. They also recruit other volunteers, assist in transporting the vaccine and provide logistical support.

On Sunday, February 25 Rotary Club of Whanganui and Lions Whanganui will be running the Tot Town Railway in Kowhai Park between 11am-3pm with proceeds going toward Polio eradication. There will also be a BBQ, displays, entertainment, colouring competition and an international costume competition. Donations also welcome. See you there!

A 2022 drama about finding love late in life is this month's cinematic offering from U3A, the University of the Third Age.

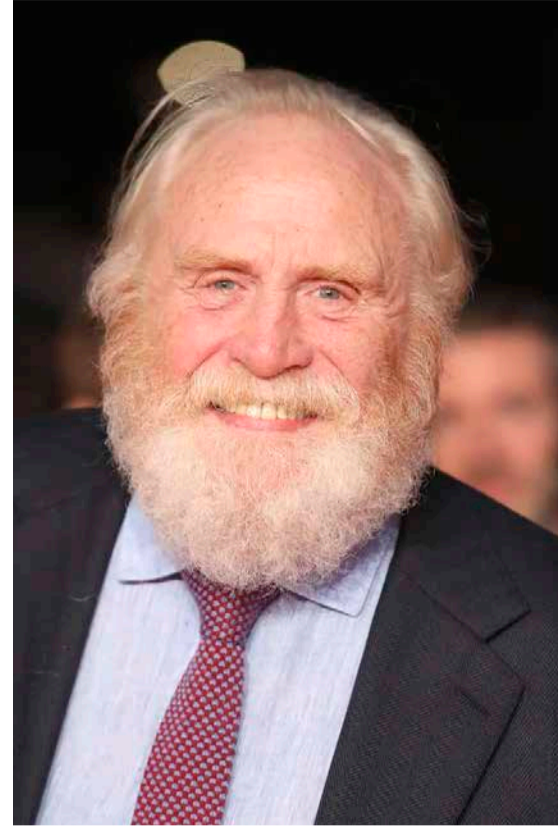
My Sailor, My Love, directed by Klaus Haārō, who made the life-affirming Letters to Father Jacob, is showing at Whanganui's Embassy 3 at 10.10am on Wednesday, February 28.

James Cosmo plays a retired sea captain who has a difficult relationship with his adult daughter Grace. When she hires Annie as domestic help for her father, he unexpectedly falls in love, giving his affection to Annie and her family rather than his own.

Shot on the Isle of Achill on Ireland's west coast, this is a slow-paced take on a second chance of love, guilt and redemption.

My Sailor, My Love is 103 mins long and has a 90 per cent rating on both the IMDB and Rotten Tomatoes film critic scores.

All are welcome at the



James Cosmo as Howard, the sea captain in My Sailor, My Love

movie, and those who wish can discuss it over lunch at Stellar. Further

information from Julie on 027 883 5352 or Marie on 027 356 2733.

**"RIDE THE TRAIN TO END POLIO"**

**TOT TOWN RAILWAY KOWHAI PARK**

**SUNDAY 25 FEBRUARY**

**11.00 AM - 3.00PM**

**Concession Fares on Train**

Barbeques  
Displays  
The Tākaro Play Trailer  
Children's and Family Entertainment

including  
**colouring competition**

and International  
Costume Competition

**DONATIONS WELCOME!**

**Rotary**  
Rotary Club of Whanganui

**Swap 2 cans of food for 1 FREE Resene testpot!**

Bring in 2 cans of food and we'll give you 1 FREE Resene testpot 60-80 mL (worth up to \$6.50).

Come in and see us at:

**Resene ColorShop Whanganui**  
17 Wilson St, (06) 348 0048

All cans of food will be donated to local Salvation Army and community foodbanks to give to Kiwi families in need.

[resene.co.nz/hungerforcolour](https://resene.co.nz/hungerforcolour)

Limit of 7 free testpots 60-80 mL per household. Maximum of 1 testpot per Resene colour. Food can must be at least 200 mL/g of food or more. Hunger for Colour runs until 29 February 2024 or while testpot stocks last. See details instore or online.

**HUNGER FOR COLOUR**

**Resene**  
the paint the professionals use

## Nau mai haere mai Everyone is welcome



### The future shape of your council!

How many councillors should sit around the table in Whanganui's council chamber? Should we have community boards?

Mayor Andrew Tripe and councillors invite you to share your feedback at a drop-in session as part of a review of the make-up of the council.

If you'd like more information before coming along to this important kōrero, check out: [www.whanganui.govt.nz/rep-review-2024](http://www.whanganui.govt.nz/rep-review-2024)

**Tuesday 20 February 2024**  
**5.00pm - 6.00pm**  
**Brechin Lounge**  
**St Paul's in the City**  
**112 Guyton Street**



## Summer is here, catch a feed, not a fine, by knowing your fishing rules

Summer's here and if you're among the hundreds of thousands of New Zealanders who enjoy recreational fishing, it's important that you know the rules for the area you intend to fish.

One of the best things you can do is to download the free NZ Fishing Rules mobile app. It tells you the fishing rules in your area and lets you know if there are any bio-toxin warnings for people gathering shellfish, says Fisheries New Zealand Acting Director of Fisheries Compliance, Niamh Murphy.

"There are catch and size limits as well as rules for the kind of gear you're allowed to use. These rules vary by species and area and do change from time to time, so it's important to stay up to date. Having the app on your phone gives you the peace of mind of having the right information at your fingertips," she says.

Once downloaded the fishing app will also work in areas where you don't have cell phone coverage. Fishers can also text free

to 9889 with the name of the fish species and receive a text back with size limits and daily catch limits.

"Fishing for a feed is a popular pastime for a lot of people during the holidays. Our Fisheries New Zealand Fishery Officers and Honorary Fishery Officers (HFOs) will be out and about, patrolling along

the coasts, and on the water to ensure the rules are being followed.

"If you're unsure of any of the rules and regulations, ask your local Fishery Officer – they're there to help you. We want to make sure you catch a feed and not a fine.

"By following the rules you'll be doing your part in keeping our shared

fisheries sustainable so that future generations can also enjoy catching a feed of kaimoana."

Another way of helping to protect our fisheries is to report any suspicious fishing you might witness to 0800 4 POACHER (0800 47 62 24) or poacher@mpi.govt.nz.

This includes poaching or illegal activity online

such as being offered fish for sale through social media platforms such as Facebook.

"Buying or selling recreationally caught fish is

illegal. If you are considering buying fish online – make sure you are buying commercially caught fish. Don't risk prosecution by purchasing fish from a

Facebook market place," says Niamh Murphy.

For more information please email: FisheriesNZ\_media@mpi.govt.nz



## Six medals brought home from Māori Basketball Nationals



Ngā Wairiki Ngāti Apa team and supporters

Ngā Wairiki Ngāti Apa ki Poitūkohu Māori o Aotearoa 2024

Tiehutia te wai ko Whangaehu  
Ka hinga te rākau ko Turakina  
Tikeitia ōku waewae ko Rangitūkei  
Ngā wai kaukau o ngā tūpuna  
Ngā wai herunga o ngā kuia  
Tthei mauri ora!

Ngā Wairiki Ngāti Apa attended our first Māori Basketball Nationals in Rotorua at the end of January 2024. 11 teams represented the Rangitūkei iwi, from Under 9's to Open Mixed who all had a very successful tournament, bringing home six medals and some great experiences. Whanaungatanga was the priority of this campaign and Tikanga Māori led our intentions. Expressing ourselves as Māori and more importantly as Ngā Wairiki Ngāti Apa is what makes this tournament so unique. All teams would not only practice the game but also came together to wānanga and learn waiata and haka to be performed at the tournament's Pō Whakangahau (entertainment evening).

We had players come from near and far to attend, with the majority of whānau being based in Whanganui. There were those who came in from outside the region, some as far as Australia, who all wanted to come home and represent their hapū and iwi.

This was a very humbling and exciting experience that has created a waka, or a vehicle for whānau to return and express our identity as Ngā Wairiki Ngāti Apa.

The U9 and U11 age group teams were our stars of the tournament, with whānau stepping up across the board to ensure the kids had a fun experience. Our U13 and U15 were amazing and brought home three golds and a silver in their respective grades. The U17 boys finished with a bronze, and the Open Mixed won the gold against some tough competition. We are very proud of these results, and it gives us a strong foundation upon which we can grow this kaupapa together. There were a lot of learnings from taking away such a big group, both logistically and technically, when it comes to navigating such a massive tournament.

On behalf of all our teams, we would like to acknowledge Te Rūnanga o Ngā Wairiki Ngāti Apa for the guidance and support. There are many individuals to thank for their contributions, too many to name, but a massive thank you to all our coaches, managers, supporters and whānau for doing what needed to be done.

Ngā mihi aroha ki koutou mō te tautoko.

## Kids surf sports are enjoying a boom in interest in Whanganui



Whanganui Surf Lifeguard Service reports a "massive number" of inquiries about its junior surf programme.

The juniors will be out this Sunday, February 18, at Castlecliff beach and, while the sessions are for members only, all are welcome to go down and check out the action.

The cadets/rookies (aged 10-14) start at 8.30am; juniors (aged 8-9) at 9.30am; and nipnips (aged 6-7) at 10.30am.

There is also a 'Give Surf A Go' session at 4pm on Sunday for children who are interested in taking up the sport. Swimwear or a wetsuit, along with adult supervision, will be needed.

The session is for ages six to 14, and afterwards, all participants and parents will be welcomed at the club for a hot drink and can access information about the junior programme and surf lifesaving.

The 'Give It A Go' session is subject to the weather, and any updates will be notified on Facebook - Whanganui Junior Surf.

Heat Pump  
**Wi-Fi**  
CONTROL

### Always return home to total comfort!

cmeltd.co.nz | 57 Putiki Drive Whanganui | 06 348 9199

**ELECTRICIANS**  
with power solutions!

MASTER ELECTRICIANS

**GME**  
SERVICES LTD



# Funding available to help those with Irlen Syndrome

If your child is struggling with reading and writing-based activities, maybe Irlen Syndrome is a 'Piece of the Puzzle'. Children and adults with this condition constantly need to cope with print distortions that cause fatigue and discomfort, and limit the length of time they can read and maintain comprehension. These children tend to become frustrated and

feel they are less able than their peers. The 'Freedom to Learn' Charitable Trust is able to help families in need of a subsidy to ensure their child (or themselves) can be assisted into glasses to relieve and overcome Irlen Syndrome. The Trust aims to ensure that no one goes without the help they need due to the cost. This funding is a gift from the Trust with no repayments expected.

Even a few of the Irlen Syndrome symptoms listed below can have significant effects on learning. Irlen Syndrome is not an optical problem. It is a problem with the brain's ability to process visual information. Irlen filters will, over time, alleviate the sensitivity to light, which is causing the problem. Irlen Syndrome is a genetic condition; therefore, it is common for more than one family

member to need the support of Irlen glasses. Signs and symptoms to look for - Sensitivity to Light. Difficulties with reading, print distortions, spelling, concentration, handwriting and copying, eye strain, headaches and migraine. These difficulties may result in delayed learning, behaviour problems, frustration, fatigue and anxiety. Checking for the presence of Irlen Syndrome is a simple matter beginning with a 10-minute questionnaire that shows if intervention is needed.



Generous funding support from both the

Whanganui Community Foundation and the Four Regions Trust, enables the Freedom to Learn Trust to continue to provide these subsidies within Whanganui. Our outreach also assists families in the Rangitikei thanks to the ongoing generosity of the JBS Dudding Trust and the Marton Christian

Welfare Association. Manawatū families are assisted thanks to Pub Charities, the Page Trust, and the Macarthy Trust. Enquiries and applications to the Freedom to Learn Trust may be made direct to: Prue Deighton prue.irlen@gmail.com or phone 06 327 8185 or 027 245 7588

## WHAT'S ON IN THE COMMUNITY

**About Poetry**  
Meets third Tuesday of month, Club Metro, Ridgway Street. 2pm to 3.30pm. Informal, friendly meetings, visitors welcome. Recite yours or a favourite poem. A monthly topic is optional. Enquiries Robert Taylor, the bugleeditor150sc@gmail.com

**Alcoholics Anonymous**  
Phone 0800 229 6757. If you have a drinking problem maybe we can help. AA Wanganui area meeting list: Sunday, St Johns Lutheran Church Hall, 51 Liverpool Street, Wanganui, 9am; Monday, Friendship Hall, Morris Street, Marton, 7.30pm; Tuesday, St Johns Lutheran Church Hall, 51 Liverpool Street, Wanganui, 12.30pm; Wednesday, St Luke's Church Hall, 34 Manuka Street, Castlecliff, 7.30pm; Thursday, St Johns Lutheran Church Hall, 51 Liverpool Street, Wanganui, 7.30pm; Al-Anon (family support) Thursday, Quaker Meeting House, 256 Wicksteed St, 7.30pm. Friday, Gonville Library meeting room, 12.30pm. Ph 0508 425 266.

**Do You Have Questions About the Bible?**  
Come and join us at the Christadelphian Hall on Tuesday night at 7:30pm for Bible-based discussion and a cup of tea. All are most welcome. 138 Great North Road. Email: wanganui.ecclesia@outlook.co.nz / www.thisisyourbible.com

**Is Peace Possible?**  
a presentation for the people of Whanganui by visiting Quaker Peace educators and activists: John Reuwer and Laurie

**Gagne.** John and Laurie have been active and are well-informed on the issues concerning Israel and Palestine. John has spent time in the Ukraine creating a peace force to protect the nuclear reactor there. Both have studied and been involved in international peace and justice issues. There will be a shared meal at the Settlement; 76 Virginia Road, starting at 5.30pm, with the presentation starting at 7pm, on Tuesday February 20, in the Quiet Room. For more information contact Marion Sanson Ph. 06-345-6438.

**MIST Mental illness Survivors Team**  
203 Victoria Ave, open 9.30am to 3.30pm Monday to Friday. Closed statutory holidays. A place to share activities and socialise. We offer activities, acceptance and support.

**Twinkle Toes at St Paul's**  
Fridays from 10.00am to 11.00am at St Paul's in The City Hall, Cooks Street. Car park building and lift access. A fun music time for pre schoolers. Gold coin donation.

**Wanganui Spiritual & Awareness Centre**  
Meetings 7pm Sundays, Quaker Meeting Rooms, 256 Wicksteed St. Local or visiting speakers or mediums sharing their spiritual gifts. Join our healing circle, take a raffle, stay for supper and chat. Everyone is welcome. Koha appreciated. See our Facebook page for details. Ph: 027-697-6308.

### OBITUARY - Bernard Joseph Gudsell

Whanganui has lost a member of a distinguished racing family with the passing of Bernie Gudsell. Mr Gudsell, who died on Sunday, was aged 92. His funeral mass will be celebrated at St Mary's Catholic Church at 1.30pm on Friday. He was predeceased by his wives Mary, and Gail. He is survived by his children Paul, Stephen, Sheila, Marie and Ann. A dairy farmer at Okoia, Bernie had brothers who, like him, successfully raced thoroughbreds. Bernie passed his love of racing on to his family, members of whom have also campaigned gallopers. Stephen trained for his parents. Bernie's long association with the Wanganui Jockey Club saw him made an honorary member. He had notable success with an equine family tracing back six generations. A member of that family currently racing is Bold Mac, a sprinter-miler being trained in Sydney by Chris Waller. Bold Mac has won \$670,000 to date. Keith Thomson also trained gallopers for Bernie, but the majority of them were prepared by Paul Belsham, the son of Bernie's second wife, Gail. Bernie's daughter Sheila is married to the Wanganui Jockey Club president Stu Watts. Paul Gudsell described his father as "a good farmer and stockman and hard case."

### Recent Bereavements

Sadly passed away recently...

- Anndaline Julia (Ann) ALDERMAN** on 3 February 2024, aged 87 years.
- Frances Margaret BETTRIDGE**, on 11 February 2024, aged 90 years.
- Joseph Alan COOPER**, on 12 February 2024, aged 88 years.
- Gloria May DUNCAN (JAGO)**, on 31 January 2024, aged 96 years.
- Audrey Irene (Aud) JACKSON**, on 10 February 2024, aged 92 years.
- Bernard Joseph (Bernie) GUDSELL**, on 11 February 2024, aged 92 years.
- Nellie Ruth (Ruth) KNIGHT (Smith)**, on 5 February 2024, aged 87 years.
- Fredrick THOMPSON**, on 13 February 2024, aged 76 years.
- Duncan Lance TROUGHTON**, on 8 February 2024, aged 68 years.

### Copyright:

River City Press produces and/or publishes advertisements strictly on the basis that River City Press is entitled to and owns the copyright in the advertisement so far as the copyright relates to publication or reproduction for publication in any newspaper, magazine or similar periodical or to broadcasting of the advertisement.

*Cleveland Funeral Home*  
**(06) 345 5522**

*Pre-Planning*  
Call or Visit For Your  
Free Pre-Planning Pack

179 Ingestre Street | [clevelandfunerals.co.nz](http://clevelandfunerals.co.nz)

## DEMPSEY & FORREST

### FUNERAL DIRECTORS

Arrange a visit today and meet our friendly team.  
We are here to help you in your time of need.  
208 Guyton St Phone 06 349 0202 any time  
[www.dempseyandforrest.co.nz](http://www.dempseyandforrest.co.nz)

## HEADSTONES

Family owned for since 1914

For all monumental work in all cemeteries

Check out our website below

462 Somme Parade, Whanganui - opposite the cemetery  
Tel (06) 343 8708, Email: [info@anderson-memorials.co.nz](mailto:info@anderson-memorials.co.nz)  
Showrooms in Feilding & Palmerston North  
[www.anderson-memorials.co.nz](http://www.anderson-memorials.co.nz)

12,000 hearts appear, but not for Valentine's



It was Valentine's Day yesterday and thousands of hearts appeared as if by magic on the Somme Parade footpath near the Dublin Street bridge. But this was no romantic gesture by a would-be Cupid. The aim is to have 12,000 hearts chalked on the path to represent the 12,000 Palestinian children killed by the Israeli attacks on Gaza. And the message alongside is a call for a ceasefire for the almost four-month-old assault.



## TRADES AND SERVICES

### Cremate-a-Mate Pet Cremations

Individual cremation  
Scatter box - Rimu box - or your own urn  
2-3 days turnaround where possible  
Pick-up & delivery included



Bryce & Sandy  
06 348 0133  
cremateamate@xtra.co.nz  
Wanganui



### UNDER NEW OWNERSHIP/MANAGEMENT

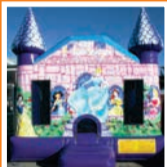
**RESIDENTIAL**  
Heat pumps / aircon  
Security camera systems  
Internet solutions and data cabling  
Rewires and renovations  
Electrical inspections (including caravans)

### INDUSTRIAL & COMMERCIAL

m: 027 244 9307  
p: 06 345 5552 Whanganui  
e: whanganui@kinetic-electric.co.nz  
www.kinetic-electric.co.nz

Taupō  
Whanganui  
Palmerston North  
South Taranaki

### Family Fun ENTERTAINMENT



- Bouncy Castles
- Obstacle Courses
- Slides
- Sports Gear & Extras
- Rides & Foam Cannon
- Concession Gear

Phone Jason  
021 174 5035  
www.family-fun.co.nz

### vega

Get Your Best Mortgage Here

**Natalie Sara**  
Residential & Commercial  
Mortgage Adviser

022 164 1566  
natalie@vegaland.co.nz  
www.vegaland.co.nz



**MONKEY BUSINESS**  
Tree Care

**Eddie White**  
ARBORIST

mbtreecarenz@gmail.com

027 385 6597

www.monkeybusinessnz.com

### OUR SERVICES

- pruning
- tree removal
- hedge trimming
- reductions
- storm damage
- maintanace
- planting

Get in touch for  
a FREE quote!

### 100% locally owned



**Dave Hoskin**  
CARRIERS LTD

Furniture removals door to door  
National and international

390 Heads Rd. P.O. Box 5042 Wanganui  
Phone: 06 344 7002 Email: darrell@hoskincarriers.co.nz

### Connecting COMMUNITIES



Your community newspaper,  
part of the independent  
community newspaper  
network.

www.cna.org.nz



## PUBLIC NOTICES

### NOTICE CONCERNING FACILITATED MEETINGS TO DISCUSS THE MOURI TŪROA PROJECT

TAKE NOTICE that a joint meeting of owners of the following blocks will be held as follows:

Taumatamahoe 2B 2B 15A No. 2; Taumatamahoe 2B 2B 15A No. 3A;  
Taumatamahoe 2B 2B 15A No. 3B; AND Taumatamahoe 2B 2B 15A  
No. 3C

PLACE: Ngā Tāngata Tiaki Office, 357 Victoria Avenue, Whanganui 4500  
DATE: Saturday 9 March 2024  
TIME: 10:00 AM

Ngā Tāngata Tiaki through the Mouri Tūroa Project is assisting with riparian planting and fencing of waterways for Māori lands on the Whanganui River and its tributaries affected by Stock Exclusions Regulations (Essential Freshwater Reforms). The project is reaching out to those Māori lands which do not have a trust or other management structure to administer their lands.

The primary purpose of the meeting will be to discuss:

- The Mouri Tūroa project and opportunities available for owners of the above blocks;
- Options to enable Mouri Tūroa to complete the proposed work, including but not restricted to:
  - A limited powers Ahu Whenua Trust over all or some of the above blocks, and election of trustee(s);
  - The appointment of an agent to represent the owners of all or some of the above blocks;
  - A full powers Ahu Whenua Trust over all or some of the above blocks, and election of trustee(s); or
  - Other options available to owners.

Future opportunities for development will also be open for discussion. We invite you as owners in these blocks to bring your whakaaro and korero on the health and development of these parts of our whenua that sit alongside Te Awa Tupua.

Further information can be obtained from Oliver Bailey, Case Manager, Māori Land Court on email [oliver.bailey@justice.govt.nz](mailto:oliver.bailey@justice.govt.nz) or telephone 06 348 0651. Postal address is Māori Land Court, DX Box PX10207, Whanganui 4500. Please quote reference: *Mouri Tūroa*

Fraser Carter  
Deputy Registrar  
Aotea Māori Land Court

### LAWNMOWING + GARDENING

LAWNMOWING, section tidy-ups, pruning, WINZ quotes. TEL-TX 06-344-2535 021-0899-2345.

### FRUIT & PRODUCE

FRESH vegetables available, open Thursdays, Fridays. Laugeson's Gardens, Westmere Road.

### PSYCHIC CONSULTANT

I am available to help with your past, present and future as well as important decisions. Sandra Singleton. Numerologist Wanganui. 06-345-3803.

### PERSONAL

FREE confidential health checks, STI and HIV screening. Whanganui Hospital. Phone for consultation 348-1775/021-323-077.

### FOR RENT

TWO bedroomed tidy, fully furnished cottage at Castlecliff, \$400.00pw. Suit a working person or couple. Available in March. Ph. 027-588-4048.

### HAIRDRESSING

MOVING Ahead haircuts Monday-Saturday. Affordable prices, call Deborah 021-173-8887.

## REAL ESTATE

### Selling your property?

- FREE market appraisal
- FREE marketing package
- Excellent, professional Real Estate service

Call Marion Farr today to discuss your real estate needs.

Email: [marionfarr@xtra.co.nz](mailto:marionfarr@xtra.co.nz)

Please call  
Marion Farr  
on  
021 572 033



**THE WATSONS**  
ROSS WATSON REAL ESTATE MREINZ  
Licenced under the Real Estate Act 2008

### FOR SALE

BLINDS - Roller & Venetians to order. Free measure and quote. Strath Davis Furniture & Flooring, Ph (06) 345-0883. NEW books available at River City Press, 52 Ingestre St. "From the Sea to the Mountain"; "Whimsical Tales of Old Wanganui"; "More Whimsical Tales of Old Wanganui"; "My Life - Annasophia". TOP range now available of 6 dollar shrubs; Lavender stoechas, Rosemary Blue Lagoon, Teuchrium Fruiticans, Hebes, Orange Day-Lillies, Australian Mint Bush, Felicia 'Blue Jay', plus 6 dollar hedging; Griselinia, Totara, Corokia 3 varieties, Lonicera Honeysuckle Golden Box, Buxus, good variety of Pittosporrums and White Manuka. Parnells Quality Tree and Shrub Nursery, 102 Fox Road, Wanganui, phone 344-6645, Est. 1895.

### WANTED TO BUY

GINZA. Always buying, always selling. Good used furniture, antiques, China and collectables. Call Ginza 345-3154

### SITUATIONS VACANT

GET paid to exercise! Pamphlet Distribution require reliable runners to deliver RCP and brochures each week. Phone Bubs on 343-2010 or 027-218-2010.

### FIREWOOD FOR SALE

AFFORDABLE firewood starting from \$50 a cubic metre for sale. Please phone us on (06) 343-8466.

## SITUATIONS VACANT

**TARANAKI  
VETERINARY  
CENTRE**

### SEASONAL STAFF REQUIRED 2024 Dry Cow Therapy / Heifer Teatseal Season

We currently have positions available in our casual technician teams for the Hawera, Stratford, Manaia and Patea branches.

You will work alongside our permanent large animal technicians and be part of a hard working, enthusiastic team inserting intramammary products into mixed aged dairy cows and heifers.

We anticipate this will start sometime in April and finish end of June depending on our season.

The hours of work are variable, and usually between 20-35 hours per week. We require staff to be available between the hours of 8am - 5pm, Monday to Friday.

### You need to be:

- A person who likes to work in a team environment
- Have a good sense of humour
- Be physically fit
- Presentable
- Reliable and trustworthy
- Previous experience with milking cows is not essential but recommended

Full training will be given.

If you are interested in one of these positions and would like to know more, please email: [rebecca@taranaki-vets.co.nz](mailto:rebecca@taranaki-vets.co.nz) with a short letter about yourself and what area you live in.

Closing date for this position is Friday 1st March.



# NEED HELP?

Emergency.....111

City Mission/Foodbank .....345 2139

Women's Refuge Wanganui ..... 344 2204



# CLASSIFIEDS

52 Ingestre St Ph 345 3666

Email: [rivercitypress@xtra.co.nz](mailto:rivercitypress@xtra.co.nz)

Nominate someone you think is deserving of our **Bouquet of the Week!**



Email or facebook message us with your nomination and reason why they deserve to win!

email: [rivercitypress@xtra.co.nz](mailto:rivercitypress@xtra.co.nz)  
facebook: River City Press Wanganui



## PUBLIC NOTICES / ENTERTAINMENT

### SECTION 101 SALE AND SUPPLY OF ALCOHOL ACT 2012

GK McIvor Trading Limited, 77 Moana Street, Whanganui has made application to the District Licensing Committee at Whanganui for the renewal of an Off Licence in respect of the premises situated at 77 Moana Street, Whanganui known as **Four Square Whanganui East**.

The general nature of the business conducted under the licence is a grocery store.

The days on which and the hours during which alcohol is sold under the licence are **Monday to Sunday 7.00am to 8.30pm**.

The application may be inspected during ordinary office hours at the office of the Whanganui District Licensing Committee at 101 Guyton Street, Whanganui.

Any person who is entitled to object and who wishes to object to the issue of the licence may, not later than 25 working days after the date of the publication of this notice, file a notice in writing of the objection with the Secretary of the District Licensing Committee at DLAdministration@whanganui.govt.nz.

No objection to the renewal of a licence may be made in relation to a matter other than a matter specified in section 131 of the Sale and Supply of Alcohol 2012.

This is the second publication of this notice.

The first notice was published on February 8, 2023.

### Wanganui Darts League Inc

388A Heads Road

#### AGM

Wednesday  
28 February  
7.00pm

All Welcome

### BUYING and SELLING USED FURNITURE



Phone 345 3154

54 Maria Place Extn  
Email: [ginza2@xtra.co.nz](mailto:ginza2@xtra.co.nz)

### LAWN MOWING



Keeping Lawns & Costs Down!

- Locally owned & operated
- Pensioner discounts
- WINZ Quotes
- Ride on work

### Wayne Bishop

Phone

027 555 3074

### AFFORDABLE LAWNMOWING

Great quality service, great price.  
Pensioner rates available.

Call Paul on  
021 245 4999

## OUT OF SCHOOL HOURS MUSIC CLASSES

For primary and intermediate school aged students only.

Lessons are available for; Ukulele, Guitar, Drum kit, Keyboard, Violin, Trumpet, Trombone, Recorder, Singing and Introduction to Instrumental Music.

Lessons only cost a one off administration fee of \$20 for the whole year's learning. These lessons are Ministry of Education funded.

### Enrolments for 2024

Information and enrolments online are available by email:

[bruce.jellyman@gmail.com](mailto:bruce.jellyman@gmail.com)

Enquiries phone 027 540 4159

#### Or Enrolment Days:

Whanganui Intermediate School Music Room  
Saturday 17 February, 10am to 12noon

Tawhero School Hall  
Thursday 22 February, 3.15pm to 4pm

Or pick up information from  
Gatshack Music 71 Ridgway Street

### BOARD WANTED

Gentleman shifting to Whanganui for work is looking for a room to rent. Clean and tidy. Phone or text 021-029-26915.

### DOG WALKING SERVICE

DO you wish you could give your dog the exercise they need, without having to walk them yourself?  
Call/text 022-010-3577.



## SUMMER INDUSTRY RACEDAY

Thursday 22nd February  
Racing from 12.05pm - 4.14pm

FREE entry & parking



Ph 345 3968  
[wjc.co.nz](http://wjc.co.nz)

WANGANUI  
FUNCTION  
CENTRE

### River City Press

- Positive news stories and advertising welcomed  
Email: [rivercitypress@xtra.co.nz](mailto:rivercitypress@xtra.co.nz)

### HEALTH & BEAUTY

JADE Traditional Thai Massage. Excellent massage at reasonable prices. 64 Guyton Street. Phone 348-8466 for an appointment.

### WEBSITE DESIGN

GET a stunning, contemporary website at minimum cost, or give your old one a strategic revamp. Phone Peter on 020-4161-3506 or email [peter@toucan.media](mailto:peter@toucan.media).

## WANTED

ANY Cars Wanted Dead or Alive



#### TOP CASH PAID

\$100 - \$1,000  
for small car

\$100 - \$7,000  
for 4x4 UTEs  
Vans, 4WD,  
Trucks, Buses

Ph Today 021 032 3006

Text: 022 535 0807

We will beat any prices in the market by 10%



## Annual General Meeting

Wanganui Competitions Society Inc.  
trading as Whanganui Performing Arts.

10.30am  
Saturday 24th Feb, 2024  
The Repertory Theatre,  
Ridgway St, Whanganui



### GLENDARROCH SCOTTISH COUNTRY DANCE CLUB

is holding

Children's classes on Friday evenings during term time, starting Friday 16 February

at Carlton School Hall, Carlton Avenue  
Dancing from 7pm - 8pm

Cost \$70.00 for the year, with discounts available where there is more than one child from a family dancing. Please arrive 10-15 minutes early on the first night.

We suggest you bring bottled water, dress in comfortable loose fitting clothing, and bring dancing shoes if you have them. We are able to lend shoes if you need them (please bring socks)

The classes will teach steps, formations and dances & encourage enjoyment of music & working as a team.

Enquiries email: [glendaroch@dancescottish.org.nz](mailto:glendaroch@dancescottish.org.nz)  
Phone Linda: 027 284 1794

### RELIGIOUS SERVICES

## UNITED SOVEREIGNS

corner Puriri and Harper Streets  
SUNDAYS, 5pm to 6pm

United Sovereigns preach end times Revelation.

We preach truth and our obligation to God in these end times.

Everyone welcome.

### WORK WANTED

**MOBILITY** scooters. Sales, service, repair, rental wheelchairs, walkers, ramps. Call Graeme 021-1195118 or (06) 347-6927.

**PAINTER** and Plasterer, professional, efficient and experienced. No job is too small. Reference available. Call or text 022-035-0175.

**QUALIFIED** builder looking for work. Quality workmanship. Renovations, decks, insurance work. Ph or text Jason (021) 741 908.

### FOR LEASE

## FOR LEASE

Office Space  
Central City Shops  
City Apartments  
Big Secure Storage  
for Planes, Boats, Buses etc.

Ph Craig, the local landlord

0274 434 432

Mitchell-Anyon Developments (MAD)



# Whimsical tales of old Wanganui

- Playground planning -

By Murray Crawford

A recent council report revealed that \$3m is needed to bring Whanganui's playgrounds up to scratch. But as well as safety compliance issues, it was also noted there was "a growing demand for playgrounds to be more accessible to all" and that "when most of the playgrounds were established, there was no real consideration given to accessibility." Referring to a lack of consideration for inclusive play spaces for the disabled.

Over a century ago, Dunedin Superintendent of Gardens & Reserves was forward-thinking regarding the benefits of playgrounds. As societal and community awareness has changed, we now know that one component was missing: inclusive play spaces. But we had to start somewhere, and what he and likeminded Wanganui citizens established was impressive.

In June, 1918, Mr David Tannock, who began his horticultural career at Kew Gardens, had ac-



cepted an invitation from the Wanganui Scenery Preservation & Beautifying Society for advice on establishing Wanganui as a Garden City. His recommendations were well received and laid the groundwork for Whanganui being voted New Zealand's most beautiful city in 2019 and 2020.

However Mr Tannock's expertise extended to children's playgrounds. He spoke of "dealing with the well-being of children so far as it relates to providing an outlet in play for their limitless energy." He said that in Dunedin there was initial opposition to providing playgrounds

by critics who as children had had plenty of spaces to play in vacant lots and open farmland, but as towns grew, children were becoming confined to backyards. Happily, prejudices were overcome and a successful playground was established with swings, see-saws, a sand-pit and seats installed.

He considered play areas should be no more than half a mile from each home, although a quarter mile was more desirable. They would provide the added benefit of separating housing clusters and breaking up rows of houses. Besides being a pleasant means of physi-



cal activity, Mr Tannock said playgrounds helped train the mind in requiring frequent judgment of time, distance, mode of action etc; developed social spirit and an understanding of fairness which would later apply to work. He also considered that play is the beginning of the development of moral character.

Mr Tannock concluded by advising mothers to supervise their children's games and where possible, join in. "Far better," he opined, "than gossiping over the back fence or gadding about town." (A statement that would have him crucified today, but in 1918 the Dunedin Superintendent of Gardens & Reserves got away with it).

"Whimsical Tales of Old Wanganui" and "More Whimsical Tales of Old Wanganui" available at River City Press. All proceeds to Alzheimers Wanganui.

# Presentation - 'Is peace possible?'

Dr Reuwer, who is a retired emergency doctor and a veteran of Un-armed Civilian Protection teams in Palestine/ Israel, Ukraine, South Sudan, Haiti, Columbia, Central America as well as inner US cities, will be giving a presentation in Whanganui on 'Is Peace Possible?'

The presentation will be on Tuesday, 20 February, at the Quaker settlement, 76 Virginia Rd. It starts at 5.30pm with a shared meal, but those who can't attend this can come by 7pm for the talk. There is plenty of parking inside the settlement grounds.

Dr Reuwer is in New Zealand on a nationwide tour, which is being supported by the Religious Society of Friends of Aotearoa (Quakers) and a world BEYOND War Aotearoa.

He will introduce an alternative security vision of World BEYOND War into our current debate on national security.

This framework helps

us to better understand what in our collective peace-making experience is successful and how to proceed. His interactive presentation will draw on participants' own understanding and experience.

During the tour Dr Reuwer also seeks to understand how New Zealand has been so successful in peace-making initiatives such as its nuclear-free status. He questions why trillions are spent on preparing and going to wars while very little is spent on resolving conflict and helping nations to work together more constructively.

Hailing from Washington DC, where he is actively involved in the Ceasefire for Gaza campaign, Dr Reuwer will be accompanied by his wife, Laurie Gagne, an emeritus professor of Peace Studies.



Dr John Reuwer

He serves on the board of directors of World BEYOND War and the Committee to Abolish Nuclear Weapons of Physicians for Social Responsibility.

For more information email, Marion Sanson, marionbsanson@gmail.com

# Visual lecture by bestselling author next month - ancient wisdom for modern lives

Initiation means 'to become conscious'. But just how does one become conscious?

Long ago there existed a secret ritual from which initiates returned 'awakened' or 'risen from the dead'. With roots in Japan c.8000 BC, the Way of the Gods was adopted worldwide, and eventually by

Christian gnostics as the 'living resurrection'. As one banned gospel explains, "to live a human existence ordinarily is to live a spiritual death, but the moment a person experiences living resurrection is the moment they discover enlightenment: It is the revealing of what truly exists." This dangerous out-of-body

experience — considered the pinnacle of spiritual development — involved techniques to raise the body's frequency and allow direct experience of the Otherworld. It was the most secret of all practices within Mysteries teachings, whose students included Pythagoras and Plato. Discover the unusual locations where initiation was performed, why no bodies were found in Egyptian pyramids, why priestesses held the highest level of office, and how a sacred narrative was twisted into the foundation of western religion.

Freddy Silva is a bestselling author and leading researcher of ancient civilizations, restricted history, sacred sites and their interaction with consciousness. He is also the leading expert on crop circles. He has published eight books in six languages and produced fourteen documentaries. Described by one CEO as "perhaps the best metaphysical speaker in the world right now," for two decades he has been an international keynote speaker, with notable appearances at

the International Science and Consciousness Conference, the International Society For The Study Of Subtle Energies & Energy Medicine, and the Association for Research and Enlightenment, in addition to appearances on Gaia TV, History Channel, BBC, and radio shows such as Earth Ancients, Fade To Black and Coast To Coast. He leads sell-out tours to sacred sites in England, France, Egypt, Portugal, Yucatan, Peru/ Bolivia and Scotland. He is also an art photographer and has rarely travelled anywhere since graduating in 1982

without being attached to a Nikon or a Leica. He began as an accredited concert photographer in London, and now captures his passion for temples, ancient sacred sites and the spirit inherent in the land.

**Initiation and the Quest for the Other-world**  
3 March, 2024, 5.30pm.  
Heritage House, 136 St Hill Street. Email kirstynz1964@gmail.com for tickets - \$35 or \$40 cash at the door.  
Supplied - Kirsty Morton



Freddy Silva, author and speaker for Whanganui's lecture

# Whanganui Bridge Club results

Bridge Results Week ending 11 February

**Monday Mawson Pairs:** N/S: 1. L Patrick V Bartrum 59.72 2. D Pech E Topfer 58.80 3. C Brown J Zhang 56.94 4. M Hoek M Dawson 53.94 E/W: 1. N Wight B Patrick 66.67 2. B Annear K Coombe 55.77 3. M Brewer M Meyrick 52.56 4. J Smith A Sutherland 52.35

**Tuesday Club Pairs:** N/S: 1. S Pedley A Thirtle 66.37 2. B Franklin-Browne C Pepperell 54.17 3. A Hancock L Vodanovich 53.57 4. R Nightingale D Berry 52.08 E/W: 1. R Sigley P Paterson 58.63 2. L Gollan P Verhoek 54.17 3. B Annear J Dodds 53.57 4. G Handley S Dempsey 51.79

**Wednesday Kowhai Pairs:** N/S: 1. G Carey R Terrey 61.67 2. J Coxon J

Lupton 50.83 E/W: 1. L Raine R Story 59.17 2. K & S Rainey 57.50

**Wednesday Social:** N/S: 1. C Harding R Story 56.50 2. J Hore B Collins 54.00 3. I Newbold D Price 51.50 E/W: 1. I Back A Buckley 53.50 2= S Poff N Gale 51.00 2= A Thirtle J Dodds 51.00

**Friday Social:** N/S: 1. D Price C Pepperell 56.09 2. S Pedley A Thirtle 54.65 3. J Firmin-Jones R Bowie 52.72 4. S Cvitanovich Wally Duncan 52.40 5. J Wagstaff M Johnson 51.76 6. A Buckley J Groves 51.12 E/W: 1. K O'Callahan C Chesswas 62.50 2. R Sigley M Brewer 57.53 3. B Collins P McDonald 56.41 4. I Back A Hodges 54.17 5. N Kennedy C Raisin 52.40 6= P Paterson G MacLachlan 51.12 6= C Harding J Dodds 51.12

# ASK A PROFESSIONAL

## Puppy Preschool

Getting a new puppy is exciting but it can also be a little overwhelming; a quick Google search provides almost too much information about the "correct" way to raise a new fur-child. In general, the focus is on a pup's physical needs, such as feeding an age- and size- appropriate food, vaccinating, microchipping, age- and size - appropriate exercise, and de-sexing (or health screening if it is to be bred).

What is sometimes forgotten is that the puppy also needs its essential psychological needs met, including appropriate play, socialisation, and sleep-time. A fantastic resource is puppy preschool, where you can socialise your pup with other pets and humans, teach it some tricks, learn effective training techniques to encourage wanted behaviours and ask any questions you have about your pup's physical health needs. These essential skills will set your pup up to become a well-adjusted member of the family for a long and happy lifetime.



WANGANUI VETERINARY SERVICES

35 Somme Pde, Wanganui, Ph. 349 0155



# 3 MONTHS FREE

If your alarm system is monitored from out of town, switch to Alarm Watch and get three months alarm monitoring for free. Call us to find out more!

**WARNING**  
ALARM SYSTEM MONITORED BY

**AW**  
ALARM WATCH  
(06) 349 0999



**SMART APP INCLUDED!**

World class alarm monitoring, by Whanganui people, for Whanganui.

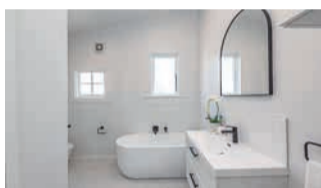
[Alarmwatch.co.nz](http://Alarmwatch.co.nz)





### Gonville 3 Gorran Avenue

Open Home



#### Glamorous on Gorran

Welcome to your dream home at 3 Gorran Avenue, where modern elegance meets classic charm. This fully renovated three bedroom property on a generous 594 m2 section (approx.) is a true masterpiece, offering a perfect blend of contemporary features and timeless appeal. All three bedrooms are generously sized doubles, providing ample space for relaxation and personalisation. Enjoy intimate family meals or entertain guests in the stylish and separate dining area which flows nicely out to the private outdoor entertaining area. With a brand new kitchen and bathroom, this home is sure to impress.

3 1 2 1

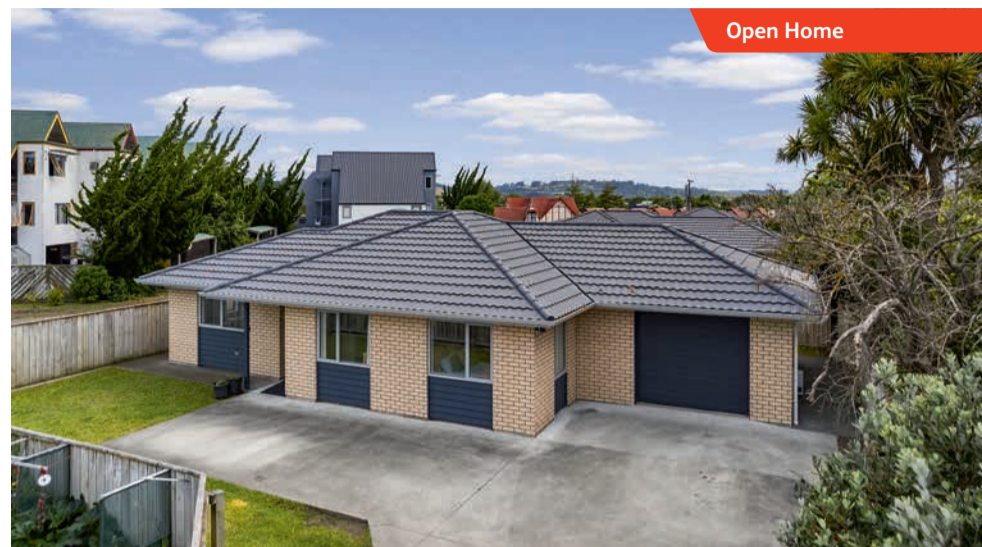
**For Sale** Buyers \$479,000+  
**View** Sun 18 Feb 10.00 - 10.30am  
**Web** pb.co.nz/WGU175616

**Anthony Floyd**  
M 021 477 435

**Leighton Toy**  
M 027 415 1515

### Whanganui 272 Wicksted Street

Open Home



#### Modern elegance awaits

Step into the epitome of contemporary living with this stunning property at 272 Wicksted Street. Built within the last 10 years, this home seamlessly combines style, comfort, and convenience, making it the ideal home for those who desire a modern lifestyle in a central location. Offering three generously sized bedrooms, this home provides ample space for the entire family or guests. The master bedroom has an en suite while the other two bedrooms come with built-in wardrobes. Enjoy the ease of a single internal access garage, providing secure parking and additional storage space.

3 2 1 1

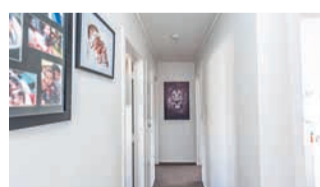
**For Sale** Buyers \$625,000+  
**View** Sun 18 Feb 10.45 - 11.15am  
**Web** pb.co.nz/WGU177358

**Anthony Floyd**  
M 021 477 435

**Leighton Toy**  
M 027 415 1515

### Gonville 246A Heads Road

Open Home



#### Investors paradise

246A Heads Road presents a golden opportunity for those seeking a comfortable and inviting home. This three bedroom property is not just a house; it's a home to tenants that are keen to stay on. Alternatively, this would be an ideal first home or for someone looking to downsize. The well-designed layout has living at one end of the house, and three good sized bedrooms at the other. The separate living room is bathed in natural light, creating a warm and welcoming atmosphere and heated by way of a wood burner. The property features a sizable front yard, perfect for outdoor play and gardening.

3 1 1

**For Sale** Buyers \$329,000+  
**View** Sun 18 Feb 11.30 - 12.00pm  
**Web** pb.co.nz/WGU176937

**Anthony Floyd**  
M 021 477 435

**Leighton Toy**  
M 027 415 1515

### Springvale 108A Parsons Street

Open Home



#### Parson Street retreat

Discover serenity in this charming two bedroom home located in a prime, sought-after area. This easy-care retreat offers a peaceful sanctuary, perfect for those seeking a tranquil lifestyle. With a seamless blend of comfort and convenience, this home is ideal for those looking to enjoy the quiet life without sacrificing proximity to amenities. Don't miss the opportunity to make this inviting space your own. Contact us today to view this property and make it yours!

2 1 1 1

**For Sale** Buyers \$339,000+  
**View** Sun 18 Feb 12.30 - 1.00pm  
**Web** pb.co.nz/WGU172351

**Anthony Floyd**  
M 021 477 435

**Leighton Toy**  
M 027 415 1515