

52 Ingestre Street, Whanganui. Phone 345 3666 or 345 3655, email rivercitypress@xtra.co.nz

St Anthony's Parish attracting increasing numbers

BY DOUG DAVIDSON

St Anthony's Parish in Alma Road is the New Zealand Centre for members of the Catholic Society of Saint Pius X. Starting in the 1980s (The church and property on Alma Road were actually bought by the Society in 1990), it has become one of the largest church communities in Whanganui, attracting around 600 attendees at their three Sunday services. And numbers are growing by up to 30 each year.

The Parish runs three schools – St Anthony's Primary, St Augustine's for Boys and St Dominic's for girls with numbers totalling around 160 students.

While the four priests are of the Society of Saint Pius X and one is a Benedictine, they are supported by over 20 nuns of the

Dominican Order. As this is an educational order, the nuns teach in the primary school and at St Dominic's. The nuns live in the convent on the property and St Dominic's includes a boarding school.

Three of the five priests do some teaching covering Latin, Ethics and Religion. St Augustine has its

own principal and teachers.

One of the priests, Father Todd, has been in Whanganui for two years and is from Australia. The other four priests including the Prior or leader, Father Chrissentment, include one French, two Americans and one Austrian. Currently there are no kiwis but there has been in the past.

They live in a small house close by and Father Todd comments, "We enjoy the difference of humour, cooking and different cultures."

Father Todd says, "I grew up in a Catholic family and attended a school run by the Order. It was when I was at University studying science education that I faced the questions of what was I going to do with my life?"

There was an incident that encouraged him towards the priesthood. "My friend asked me to come with him in his car. I declined, and soon after, the car crashed. If I had been

in the passenger seat I would have been killed. It was the catalyst for me. I had been given grace to take life more seriously."

The decision was helped by the family attitude of "the priesthood being a noble pursuit and a life of service was worthwhile. My attitude is that we are all made for another life, and a sacrifice in this life is a short stint before eternity."

He attended a seminary near Sydney for six years (the length has been increased to seven) while also completing further studies in Latin. He says, "You live by faith. You wrestle with doubts. The seminary was supportive. There was no pressure if you did not want to complete the studies."

Continued on page 3

Boys at the back – Antonio Magnoli, Jacob Larsen and Xavier Raju. Girls: Anne Barton and Immaculata Hanamure. Sister Mary Agnes and Father Todd.



WANGANUI
BEDROOM Specialists
OPEN 7 DAYS
 Locally owned & operated
151 St Hill Street, Wanganui
Phone 06 345 6084

Harcourts
 Whanganui
Looking to sell?
 call me
Paula Siddells on 027 500 1242
 for an award winning sales agent who gets results!
 #siddellssells

Paula Siddells
 Licensed Real Estate Agent REAA 2008

MAGIC MOMENTS NZ PRESENTS
THE INTERNATIONAL GRAND MAGIC SHOW
Royal Whanganui Opera House
April 24th - Two shows at 2pm & 6pm
 Book tickets now @ www.grandmagicshow.nz

ROYAL WHANGANUI OPERA HOUSE THE BREEZE magic MORE FM

LA Z BOY
25%
 off all La-Z-Boy
ENDS 1st APRIL 2024
 T&Cs apply

DIMOCKS HOMESTORE
100% BedsRus PH 06 348 4877
190 VICTORIA AVE, WANGANUI **OPEN 7 DAYS**

ENROL NOW

- We have courses in:
- Animal Care
 - Rural Animal Technician
 - Carpentry Level 3
 - Agriculture Level 3 - Dairy

AGC TRAINING FOR INDUSTRY
 CHALLENGE YOUR FUTURE | WHAKAHEIA TO WERO
 Call 0800-348 8215 www.agctraining.co.nz

Check out what's in this week's RCP

Most readers might not be aware of St Anthony's Parish on Alma Road. (See our front page story) It is the New Zealand Centre for members of the Catholic Society of Saint Pius X as well as hosting the teaching order of Dominicans, and is now one of the biggest churches in Whanganui, especially for attendance on a Sunday. Their three schools are thriving. Their conservative approach to life and religion certainly has a significant appeal.



Doug Davidson
journalist@
rivercitypress.co.nz

Congratulations to Kiri McKee. The need for a mobile laundry and shower facilities for those who are homeless or living in tents and campers has been talked about for some time. Kiri and her husband are doing something about it (page 6).

However, there is unlikely to be any action on the part of Whanganui Hospital about those speed bumps at Gate 2. No matter how slowly you drive over them, they will give your car

a good shake. They could and should be modified (page 6).

You will be shocked by the number of birds killed by rats, stoats, possums and cats, especially feral cats (page 4). They need to be controlled more effectively.

After interviewing Stephen Tier and his Barista Clean product, I've started looking at how local baristas are cleaning the steamer unit on their espresso machines (page 12).

RIVER CITY PRESS

Positive news stories welcomed
Email: rivercitypress@xtra.co.nz

Copyright:

River City Press produces and/or publishes advertisements strictly on the basis that River City Press is entitled to and owns the copyright in the advertisement so far as the copyright relates to publication or reproduction for publication in any newspaper, magazine or similar periodical or to broadcasting of the advertisement.

Support for dredging consent sought

Whanganui Port is now seeking a long-term dredging consent as the next major milestone in Te Pūwaha: the Whanganui Port revitalisation project.

This long-term consent will eventually replace the priority dredging consent for the port basin, which has a term of two years and was approved early in 2023. The priority dredging consent currently allows Whanganui Port operators to dredge immediately around the three main wharves and along the Wharf Street boat ramp.

Te Pūwaha is premised on relationships, and it is vital that all parts of our community see their value and voice within the project. The proposed dredging application is being approached in this way to ensure all work is done in a way that includes the whole community and recognises the legal status of the Whanganui River under the 2017 Te Awa Tupua (Whanganui River Claims Settlement) Act.

"As with all other work undertaken within the Te Pūwaha project, project partners are committed to upholding Tupua te Kawa and celebrating the connection between our community and Te Awa Tupua," says Te Pūwaha chairperson Kahureremoa Aki.

"A strong principle relating to the dredging is a commitment to owning our impact. This means being cognisant of the environmental effects, and finding a pathway which enables the Whanganui Port to give back to

our awa and improve its health into the future, providing opportunities for abundance and enhancement through greater community connection with the awa, improved governance, education opportunities and ecological restoration."

Whanganui Port project director, Phil Wardale agrees.

"The dredging activity will be done in balance with owning the ecological impact that dredging creates and our commitment to Te Awa Tupua. As a project we are not shying away from ensuring our contribution to the awa can enhance the wellbeing of Te Awa Tupua."

Because regular dredging of the Whanganui Port basin has not occurred for a number of years, the sediment has built up, impacting the ecology of the port basin, while also affecting access for commercial operators, boat owners and most importantly, the Whanganui Coastguard.

The long-term dredging consent application, scheduled to be lodged in March 2024, will cover the removal of sediment within the whole Whanganui Port basin and river bar, with spoil to be released back into the main channel of the Whanganui River, immediately downstream of the basin during outboard river flows.

The dredging application will also include a proposal to close the hole in the training wall, to future proof the port basin and reduce the flow of floating debris.

"Long-term dredging will create greater access and opportunities for both recreational and commer-



Current dredging solution at Whanganui Port basin

cial use. The port basin will become a sheltered area for water sports such as paddle boarding and kayaking, while commercial businesses will have fewer limitations, enabling the likes of Q-West Boat Builders to grow their building and maintenance services" says Wardale.

"By returning the depth within the port basin to historical levels, we are securing access to the new marine precinct currently under construction," he says.

Whanganui Port has also sourced a cutter suction dredge to trial in the basin.

"Our current dredging solution of a barge and excavator has its uses, but it's unable to shift the amount of sediment we need, at an efficient pace," he says.

"That is why, starting next week, we will be trialling a new piece of dredging technology."

"Our procurement process is to look internationally, along with here in New Zealand, and this trial will help inform us of the best type of equipment to use for our spe-

cific purpose."

The trial dredging equipment will be in place for the month of March, and if operating well, into the month of April.

For information on the

proposed consent application for long-term dredging please visit www.whanganuiport.co.nz or email portproject@whanganui.govt.nz.

St Anthony's Parish attracting increasing numbers

Continued from page 1

The Society of Pius X is noted for its continuing use of Latin in the Mass. Father Todd explains while "prayers and readings are in Latin, readings on Sundays are in English and if there is a sermon, it will be in English. The faithful are encouraged to understand Latin but can follow a written English translation."

When newcomers attend a service for the first time, "they normally comment about the number of young people and that everyone is quiet.

The expectations are set from the start and are usually reinforced by older brothers and sisters."

Their Church building will be 100 years old this year, and the Parish is planning suitable celebrations. "We are preparing a play to be performed mainly by the school students, summarizing both the history of New Zealand and the local history of the past 100 years, including elements of Māori history. The event will be open to the public."

The Parish is keen to reach out to the community. Their annual Medieval Fayre has become very popular; Father Todd says, "We appreciate a number of locals turning up dressed in medieval costumes. This year, members of the Nova Zeelandia Vikings in Whanganui demonstrated the art of Viking-style fighting.

They do a yearly procession in June/July around the local Gonville area on the Feast of St Anthony's. They also visit the Statute of Our Lady in Paraparumu on an all-day pilgrimage.

The church operates the Legion of Mary, with parishioners visiting and supporting the sick and the elderly. Then there is the Children of Mary, run by Father Todd who says, "it is a bit like Girl Guides." Father Chrissment is the chaplain to one of the teams of the Marist Rugby Club (namely, the Knights). (Father Todd, coming from Melbourne, is more of a fan of Aussie Rules)

Carl Bates MP for Whanganui

We're open!

Our Whanganui Electorate Office is open
at 200B Victoria Avenue

Opening hours:

Tuesday-Thursday
9.30am to 12.30pm; 1pm to 3pm

Monday and Friday by
appointment only

Tel: 06 348 1029
Carl.BatesMP@parliament.govt.nz



eBikes

WANGANUI

**New eBikes in stock and
also eBikes available to hire!**

Stockists of:

73 Putiki Drive, Wanganui | 06 348 8008
www.ebikeswanganui.co.nz
info@ebikeswanganui.co.nz

Don't want to know?

- IV Sedation

VICTORIA DENTAL

Make an appointment today

06 345 3222

Victoria House

1a Rutland Street, Wanganui

Whanganui Repair Cafe opens this Sunday in Gonville

Trish Flutey is one of the keen soft-tech repairers who will be at Repair Café Whanganui in Gonville on Sunday. Photo credit: Jacqui McGowan



Fifteen volunteers have been trained and are ready for the first Repair Café Whanganui event on Sunday, 24 March. The doors open at 11am at the Gonville Community Room behind Gonville Library, and the last repair job will be accepted at 12.30pm. Mending of soft textiles is the focus at this event. 'Each repair is ideally a quick fix,' says project lead and host Margi Keys. 'They could be hand or machine-stitching, darning or patching. Any fabric or buttons that need to be added should be supplied by the visitor in each case.' The two-hour event is expected to draw a crowd, so queue management will be provided by the team. 'It will pay to arrive early, but please be prepared to wait', says Margi.

'You can buy a hot drink and a biscuit while you are waiting for an available repairer.' Tasks like replacing zips will not be undertaken because they take too long. A donation is requested for each successful repair

to help pay for the venue. Repair Cafes are pop-up events that connect skilled volunteers with visitors who need a belonging fixed. In New Zealand, they tend to be held monthly in community spaces.

International Grand Magic Show coming to Whanganui

The International Grand Magic Show is touring the country over April through to November and will be performing at the Royal Whanganui Opera House on Wednesday, April 24.

Producer and MC for the show, Reggie Gavēl, told the RCP that "We had two shows at Sky City as a tester and they went really well, encouraging us to take it New Zealand-wide." The tour will include 15 venues and 45 shows.

There are five main acts as follows:

1. Jean Phillipe, originally from France, who has been performing as a magician, comedian and circus entertainer worldwide for nearly 30 years. Reggie describes him as "a unique performer."
2. Mr How from Beijing, China. He will bring Oriental Magic to the stage, involving 'mentalism' (demonstrating highly developed mental or intuitive abilities.) and involving audience interaction.
3. Andre Vegas, a New Zealand illusionist who



Reggie Gavēl, with his cast of magicians coming to Whanganui in April.

will make a Harley Davidson motorcycle 'disappear.' "It has never been done before in New Zealand," says Reggie. Another of his tricks is 'the table of death' – an escape act, described by Reggie as "a little bit dangerous" (no audience participation required)

and also something never been done before in New Zealand. 4. Felicity Rogers. "There are not many female magicians around, and she is New Zealand's only professional magician," explains Reggie, and "she is one of my favourites. I know the tricks having seen them many times but each time she performs I have to say, wow."

5. Supporting acts include Katharina from Austria, Natasha from Australia and homegrown Elise from Nelson.

As Reggie says, "This is the largest magic and illusion show in the Southern

Hemisphere." It has taken a lot of organisation over the past six months for Reggie to bring the Grand Magic Show together, but he is already thinking in terms of returning next year with new and different acts.

The show is suitable for nearly all ages, from primary school students to grandparents. You can book your tickets at www.grandmagicshow.nz Watch out for RCP draws – for a double pass and also for Magic Kits complete with three magic tricks to show off to others.

Come celebrate Holi in Peat Park this Sunday

Holi is considered one of the most revered and celebrated festivals in India, and it is celebrated around the world as well as New Zealand. It will be celebrated in Whanganui on Sunday, March 24, from 11am to 2pm at Peat Park in Peat Street. All are welcome.

Holi is also known as the Festival of Colour and there

is a saying, 'Let the colour shower joy. It can be a boisterous occasion, characterised by family and friends daubing coloured powders over each other and drenching unsuspecting passers-by with a deluge of water. Everyone is fair game for fun.

The Whanganui celebrations are likely to be a bit more sedate. Either way,

the colour powders can be washed out afterwards, but just in case, wear casual clothes, preferably whites. Refreshments will be available.



GET IN AND GRAB YOUR HOT CROSS BUNS

Freshly Baked

372 Heads Rd, Whanganui
Phone 06 281 3905

COLOURPRO PAINTING
Interior and Exterior
Fully Qualified • Free Quotes
WE PAINT SO YOU DON'T HAVE TO!
Book in for your summer projects now!!

Phone Ash Regan 027 856 1779
Email colourpropainting21@gmail.com

SUMMIT Electrical
Top Service • Top Workmanship • Top Electricians

- 24/7 Service
- FREE Quotes
- Member of HAZARDCO
- For all your electrical requirements

Summit Electrical Services Ltd
0800 2 SUMMIT
0800 2 786 648
Todd Cowan - 022 325 0056

Member **MASTER ELECTRICIANS**
Electrical Contractors Association of NZ

Find us on **Facebook**

Gonville superValue
just what you need

THIS WEEK'S SPECIALS

Super Lean Premium Mince only \$11.99 kg	\$20 Trays Crumbed Pork Schnitzel 1/2 price only \$10.00 each
----------------------------------------------------	-------------------------------------------------------------------------

WILD WEEKEND SPECIALS

only \$7.99 kg **Frozen Mutton Leg Roasts**

Buy Four \$5 Meat Trays for \$20 and Get Another \$5 Tray FREE

PRODUCE

Leeks only \$2.00 each	Red Kumara only \$5.50 kg
----------------------------------	-------------------------------------

NEXT WEEK'S SPECIALS - STARTING 25.3.24

Frozen Mutton Chops only \$7.99 kg	All \$15 Trays Fresh Chicken only \$10.00 each
----------------------------------------------	----------------------------------------------------------

All items while stocks last (no rainchecks). Get in early.
47 Abbot St, Gonville • Ph 06 344 3002 • 7am-8pm, 7 days
www.wanganui.store.supervalue.co.nz

Western Coast MG sets up branch in Whanganui

Controlling feral cat population to help fight for a predator-free NZ



Jimmi in front of new MGs in Whanganui.

If you have been past the old Ray White Real Estate building, previously Pizza Hut, on Victoria Ave you will have noticed the car yard is full of MG cars. It is now the Whanganui base for Western Coast MG.

Owner Jimmi Guilloson says, "We are proud to bring the heritage and style of MG to the community, along with exceptional value and performance."

It is part of an expansion process for the dealership based in Hawera. Not only is it getting new, much larger headquarters in Hawera, but it has also opened branches in New Plymouth and Whanganui. The name Western Coast sums it up.

When asked why they focus only on MG cars, Jimmi quickly explains – "They are great value for money with the new MGs starting from only \$19,490 and the MG4 electric car priced from \$43,990.00. The MG 4 was also selected as the Overall Car of the Year."

Jimmi adds, "We have the highest MG market share in New Zealand."

Other advantages include a seven year unlimited warranty, a \$3000 off new electric MGs and the fact that MGs look good. There have a full range of petrol, electric and petrol-electric vehicles from small cars to medium-sized SUVs.

The Whanganui site has started with a pop-up sales room staffed by Hannah Baylis, soon to be joined by another salesperson. The building will be remodelled and will have a full showroom and be able to offer a full serviced workshop attached to the main building.

Jimmi emphasises that "we are here for the long haul." He has been selling cars most of his life and loves getting away from the desk to talk with customers.

A message sent from Forest & Bird to its members makes for grim reading. "Every year cats, rats, stoats and possums massacre 25 million birds ... Right now in Aotearoa, over 4000 of our native species are under threat or at risk of extinction." By the way, the 25 million birds killed per year equates to over 70,000 per day.

Two local Forest and Bird members came to see the RCP, asking us to spread the word.

An article from News-hub points out that "in the past five years, the feral cat population has outnumbered possums. Cats can not only kill between 10 and 20 prey items a day but they also breed six times faster than possums, with 2 litters a year from the age of four months, and three to six kittens per litter.

The article goes on to explain that while DOC has a mandate to control feral cats on conservation land, it doesn't have dedicated funding for this purpose. The 2022 Budget allocated \$30 million to ramp up deer and goat control. There was no similar allocation for feral cat control. In this situation, volunteers and community groups are doing the best they can.

The SPCA acknowledges that feral cats are considered a pest under New Zealand law and recognises the need to act on ecological and conservation concerns where pre-



dation (attacking another animal) is likely to be a serious problem.

Anja Dale, the SPCA's chief scientific officer, was quoted as confirming the SPCA supports the humane killing of feral cats.

Forest and Bird is arguing for a national Cat Management Act to introduce mandatory micro-chipping and desexing for all pet cats and to make owners more responsible for their cats. (See Whanganui's bylaw in the last paragraph) Pet cats, if allowed to roam at night, are also responsible for killing birds.

The RCP asked the Whanganui District Council a couple of questions. They are below, along with the answers from operations manager regulatory and compliance, Jason Shailer:

Are animal control officers in any way involved in trying to control feral cats?

The council's environmental health team lends traps out free of charge to people who get in touch about feral cats. Generally, cats caught in traps are taken to the SPCA.

I understand that the council has a rule of a limit of three cats per household. Can you confirm this and comment on whether it is able to be enforced?

The council doesn't proactively check household cat numbers – the bylaw introduced in 2021 is used when we receive a complaint about a household with a large number of cats causing a nuisance. In the event of a complaint, animal management officers visit the household to put them in touch with the SPCA to get their cats desexed and provide owners and neighbours with traps to help catch the cats if needed.

To control cat numbers in our district, under the bylaw, cats over four months old are required to be microchipped and desexed – unless they are registered with a nationally recognised cat breeders' organisation or their health would be adversely affected by desexing. This does not apply to vets, charities like the SPCA, and cat boarding premises."



ARIZTO
LOOKING FOR A REAL ESTATE CONSULTANT?

CALL RACHEL MILLER

Let Rachel help you sell your home. Schedule your appointment to get your market evaluation. All new listings receive complimentary marketing.

027 526 5969
rachel.m@arizto.co.nz
Licensed Salesperson (REAA 2008)



To view my current listings

Scan me!



HOME MADE
HONEY ICE CREAM &
HONEY PRODUCTS

06 324 8224

Cnr State Highway 1 & Rongotea Road, between Foxton & Sanson
wairekahoney.co.nz
info@wairekahoney.co.nz

Open 7 days till 5pm



Experience the joy of flight!

Flights from **\$190**

30 minute trial flights

Contact us on 06 345 0914 or email: info@wanganuiaeroclub.co.nz

Whanganui MP welcomes boost to cancer funding

Whanganui MP Carl Bates is delighted that Whanganui cancer patients will benefit from a government announcement on Thursday, 14 March.

Health Minister Hon. Dr Shane Reti announced a package of measures on Wednesday to drive better cancer services for all New Zealanders.

One of the items proposed is an expansion of the infusion services at Whanganui Hospital.

The Kimiora Infusion Unit opened in December 2023, allowing Whanganui chemotherapy patients to receive most of their treatments at Whanganui Hospital rather than have to travel to Palmerston North.

Well-known Whanganui businessman, the late Robert Bartley suggested the unit to then-CEO Russell Simpson when he was receiving chemotherapy treatment in 2020 and 2021.

Carl Bates said that Dr Reti's announcement would enable the Kimiora unit to treat up to ten patients per day.

"This will save many families the cost, stress and emotional turmoil of repetitive trips to Palm-



Whanganui MP Carl Bates

erston North," Bates said.

"Being able to receive their chemotherapy locally, in a facility where family members are able to sit with them during treatment is good for both physical and emotional wellbeing" he said.

Dr Reti made the announcement at the launch of a new mobile breast screening unit in South Auckland, which is expected to treat up to 6000 women annually.

He also confirmed funding for two new cancer drugs to treat breast cancer and acute myeloid leukaemia.

Acknowledging that he and the Government still have a lot to do, Dr Reti said, "Today, I also want to acknowledge the hard work of our health staff, who work across cancer screening and treatment to help improve health outcomes for cancer patients."

Comedy/drama "It Must Be Heaven" - U3A film for March

The comedy/drama 'It Must Be Heaven' is the U3A film for March is a 2019 film from Palestine, with a 96% Rotten Tomatoes rating. It had six wins in international film festivals and 17 nominations.

The movie is an entertaining blend of the poignant and absurd, the subtle yet. It follows a Palestinian man attempting to escape from his ordinary life, only to encounter the same problems as he had back home.

It reflects how Palestinians see the international system and how they look at themselves. It reflects the differences in our world through incredible cinematography as our



A scene from the movie, *It Must Be Heaven*

traveller journeys from Paris to New York.

Perhaps it raises the question: Can we create Heaven in our mind?

'It Must Be Heaven' tend.

screens on Wednesday, 27

March, at 10.10 am at the Embassy, and the general public is welcome to at-

For more information contact, Julie 027 883 5352 or Marie 027 356 2733.

FOR THE BEST HIRE EQUIPMENT IN TOWN

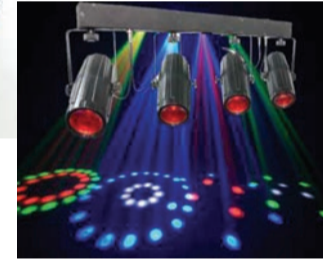
MARQUEES • MACHINERY HIRE PARTY HIRE & SALES



26 CHURTON STREET PH 345 7017



PARTY SUPPLIES



www.hiremasterwanganui.co.nz

HAERE MAI WHANGANUI TO YOUR NEW PLANE!



Twice the size, twice the room with 68 seats. We're bringing bigger and better to your backyard Whanganui, with Air Chathams' ATR-72 flagship service, direct from Auckland from this April.

So get on board and support local!

airchathams.co.nz



Your family in the sky to whanau i te rangi

Those speed bumps at Gate 2 Whanganui Hospital African Drum Master in full flight

In late 2022, speed bumps were installed at Gate Two, the main entrance to the Whanganui Hospital, because as Katherine Fraser-Chapple, Health New Zealand / Te Whatu Ora Group Director of Operations in Whanganui, says, "The hospital was having problems with speeding drivers that put patients, visitors, and staff at risk. The area has high foot traffic of both staff and patients."

While accepting the rationale, many members of the public who use this entrance including those who volunteer to deliver Meals on Wheels, say they are "excessive."

Maureen Sudlow wrote to us saying, "Even if you go over them extremely slowly the shaking is traumatic – especially for the elderly. I have had to drive my husband into Te Whare Kakariki twice lately and am now having to wear a neck brace because of the jarring."

She has received significant support from other members of the public and sent us a sample of the comments she has received. They include:

"Yes, I went in there today and was horrified at how mind shaking those judder bars are. Can't be good for cars either."

"I am not against judder bars and have never encountered ones that bad before. Even if you stop then go over very slowly, they are awful on your neck n back."

"There are six of them if you go to Ophthalmology Dept. Brutal. Not fun for the elderly person I take there in my work van."

"The Meals on Wheels volunteers have a lot of issue with the judder



The crossing at Gate Two, Whanganui Hospital.

bars."

"Even at a very slow speed, those judder bars are enough to cause significant pain or even injury, especially to the elderly."

"Agree they are the worst judder bars I have ever encountered. I had to go in multiple times a day to visit a patient and in the finish I took our big 4WD instead of my smaller car as I have a back injury."

Katherine Fraser-Chapple told us, however, that "If the bumps are crossed at the signposted speed of 5km per hour, then they are comfortable to cross. If crossed at higher speeds, they will have a jarring effect, which is what they are designed to do to simply slow drivers down."

Having been to a number of hospital departments via gate 2, this journalist went back to check them out again.

Even at 5kph, the car definitely was knocked about, not helped by the

speed humps having been placed at an angle.

There are many other speed bumps around town that slow you down but without knocking the car about and making it so uncomfortable for the driver

and passengers. Examples include those close to Tawhero and St Marcellin schools, those outside Collegiate, and the recent ones put in on Guyton and Wicksteed streets intersection.

Plans for a mobile laundry and shower service for the community

Kiri Mckee has been an active volunteer in the community sector for the last three years and during that time has seen the need for a mobile laundry and shower service for the community, especially for those living along the awa in cars, campers, or tents without these facilities.

She is now rebuilding an old horse float and converting it into a mobile laundry and shower service, naming it 'Hope.'

"It is still in the building process, but I do have a time frame and

am determined to get her completed and on the road in the next month, Kiri says. "Hubby and I fundraise to purchase materials and have received some generous help. A metal company from Palmerston North has kindly donated steel sheets, which was a massive weight off our shoulders. Other sponsors include Wedding & Event Services New Zealand who are supplying kai for our fundraiser on Sunday, 31 March.

The fundraising will help with shower and laundry appliances now that they are nearly complete on the outside and soon, they will be able to start work on the inside.

The idea is to park up at a designated area twice a week for a few hours and offer Hope's services. The service will be free, but donations are welcome.

Kiri says "Such a space can give them a little dignity back, help them feel refreshed and ready to conquer the day, clean wounds and maintain hygiene, and lift self-esteem. Hope — Mobile

The Whanganui music scene will be exploding this Friday when Ghanaian master drummer Yaw Asumadu brings his 12-piece band down from Auckland to the Musicians Club. The band features multi-instrumentalist Asumadu on drums and marimba, flute and vocals, performing traditional music and his original compositions backed by rhythm and horn sections with some amazing musicians making up Ozi Ozaa, translated as 'you work hard and then you enjoy'. This is afrofunk at its best, music designed for dancing to the rhythms that have inspired audiences forever.

Asumadu learned his art at an early age from masters and enjoyed an international career playing for twelve years with the Ghanaian Pan African Orchestra. That brought him



Yaw Asumadu and Ozi Ozaa

to London where he joined the Adzido Pan African Dance Ensemble in 1999 as a master drummer and composer. Some ten years on, he formed the first version of Ozi Ozaa, joined by a stellar line up of top musicians from Ghana, Nigeria, Italy, France and the UK.

In 2018, Yaw moved with his Kiwi partner and family to NZ and, after meeting Tauranga based guitarist Tristan Hancock, formed a new band to play his music.

That band is travelling down to play the Cuba Dupa Festival in Wellington this weekend, and Whanganui will be their stopover en route to the capital. The band has a true international flavour, with Asumadu supported by Hiro Kobayashi (Japan) on trumpet, Fabio Camera (Brazil) playing percussion, and Tristan (Fiji)

on guitar. The other eight players are a who's who of eclectic Auckland musicians.

Featured at the 2023 Auckland Arts Festival, the band was described as:

"Asumadu is now joined by a Kiwi collective of guitarists, brass players and percussionists, who inject his mixture of funk, jazz, highlife and traditional African beats with new local flavour. Ozi Ozaa means "work and happiness" – a simple motto that promises dancing, singing and smiling for all those who come along". Come along, you must!

Friday 22 March @ 7:30pm at the Whanganui Musicians Club, Drews Ave

General Admission \$30, pre-bookings are \$28.92 online at Eventfinda.

ASK A PROFESSIONAL

Preparing for unexpected vet bills

Pets are wonderful companions, but they're also a serious, long-term financial commitment. The costs of food, vaccinations, microchipping, de-sexing and dental care can be expected regularly over their 10 to 20 year lifespan, but at some point in their life, pets also bring significant and sometimes overwhelming unexpected costs when they become unwell or are injured.

Having pet insurance can prepare you for many of these costs, depending on the conditions covered

by your pet's policy. Alternatively, weekly payments into a dedicated vet bill bank account or directly into your pet's vet clinic account can ensure that when these costs come up, much of the treatment is already paid for.

When it comes to vet bills, expecting the unexpected gives you the peace of mind of knowing that your pet is covered when they need urgent veterinary care.



WANGANUI VETERINARY SERVICES

35 Somme Pde, Wanganui, Ph. 349 0155



Laundry and shower service can change lives.

To support such a service, please email Kiri at kirimckee@gmail.com. You can also check progress on her Face book page: Hope — Mobile Laundry and Shower service.

The sausage sizzle fundraiser is on Sunday, March 31, at Mitre 10, 9.30am to 3pm.

"Together we can make that change."



Traditional Easter Hot Cross Buns

Buy a Steak, cheese and tomato sauce pie to support the Amdram Whanganui production of Sweeney Todd!

Savages Bakery
127 Duncan Street, Phone 343 9488

Savages Hilltop Bakery
Great North Road, Phone 345 9974

Savages Moana Street
73 Moana Street, Phone 343 2057

WHANGANUI EAST

ST JOHNS HILL

WHANGANUI EAST

www.savagesbakery.co.nz

Award-winning real estate team is now 'Floyd, Toy and Jonas'

Anthony Floyd and Leighton Toy became a real estate team only three years ago and are now the number one team for Property Brokers real estate agents nationwide – and there are over 450 agents competing for the honour. They are also the number one team for Property Brokers in Whanganui, where the agency regularly has over 50% market share. Together, they have sold over \$110 million of real estate in Whanganui.

The duo is now to become a trio with well-known local identity and CE of Sport Whanganui, Danny Jonas, joining the team in early April.

From Anthony and Leighton's point of view, "We want to expand, get bigger and better, to continue to grow, and provide a quality service to our community."

From Danny's point of view, "I have been involved in the sports sector for 32 years, with the last 15 as CE, and I was looking for a change." While playing golf with Leighton, the possibility of a switch to real estate was discussed, with Leighton "very complimentary about the profession."

"To be offered a chance to join a well-established, high performing and successful team is a privilege and an opportunity," says Danny.

Why have Floyd and Toy been so successful? They put

it down to their extensive connections and heavy involvement in the community as well as being approachable and personable. "We enjoy what we do."

"You are in the right job if you don't feel like it's a job."

They sponsor a range of sports from bowls, golf, and netball to football, as well as supporting Life Education Trust. But as Anthony says, "We also get involved in the sports, being there, participating, helping out."

This is especially so with their support of the football programme, First Kicks, for children aged 4 to 6. They not only provide the programme for free and the shirts but also run a sausage sizzle, giving the gold coin donations back to the programme. All Athletic Football teams up to year 12 so far have been provided with new playing strips, thanks to Floyd and Toy Real Estate.

Danny, with his extensive background in sport, especially swimming and boxing (he is a keen supporter of the Whanganui Boxing Club), and his connections in the community, will fit in well.

Expect a fair bit of ribbing, though. Anthony quotes the comment of the Property Brokers office – "Floyd and Toy Real Estate are known as Team Fat ... and now it has just got fatter." Welcome aboard, Danny!



Front left: Anthony Floyd, Danny Jonas; back, Leighton Toy.

FLOYD, TOY & JONAS

Real Estate *It's what we do*

Anthony Floyd
021 477 435

Leighton Toy
027 415 1515

Danny Jonas
027 224 2270

For all your real estate needs, call the boys today to get the job done

Property Brokers Ltd Licensed REAA 2008



2017 SUZUKI IGNIS HYBRID

Economical 1.2L Hybrid auto, only 32,000 kms, tints, alloys, high seating, great colour!



NOW \$16,995

2023 SUZUKI SWIFT GL

1.2L, auto, NZ new, ex service loan, only 6,900kms, GPS, reverse camera, bluetooth, great savings from new.



NOW \$21,995

2019 SUZUKI CELERIO GLX

1.0L auto, NZ new, 1 owner, only 9,000kms, alloys, bluetooth, 6 airbags, CD, like new!



NOW \$13,995

2020 SUZUKI IGNIS LTD

1.2L, auto, only 38,000kms, NZ new, 1 owner, GPS, reverse camera, side mouldings, spoiler, monsoons.



NOW \$18,995

2017 NISSAN MARCH S

1.0L, auto, only 35,000kms, ESP, A/C, immaculate condition, economical and late model!



NOW \$12,995

2018 HOLDEN SPARK LT

1.4L auto, NZ New, only 37,000kms, leather, bluetooth, cruise control, reverse camera, nice car.



NOW \$14,995

2009 HONDA ACCORD V6

3.5L, auto, only 121,000kms, NZ new, loads of features, leather, heated seats, great condition!



NOW \$9,995

2015 SUBARU IMPREZA SPORT

2.0L, auto, only 73,000kms, sporty hatch, Eyesight, reverse camera, cruise control, keyless start, tints, alloys.



NOW \$16,995

2018 KIA NIRO EX HYBRID

1.6L, HYBRID, only 129,000kms, reverse camera, bluetooth, adaptive cruise control, Apple CarPlay, late model.



NOW \$16,995

2021 HYUNDAI KONA N-LINE

1.6L, turbo, auto, top model, NZ new, 1 owner, only 29,500kms, bluetooth, leather, reverse camera, safety package.



NOW \$36,995

2019 RENAULT KOLEOS ZEN

2.5L 4 cylinder, auto, NZ new, top model, only 49,000kms, leather, running boards, 20" alloys, tints, reverse camera.



NOW \$29,995

2013 SUBARU EXIGA

2.5L, auto, 7 seater, alloys, tints, towbar, adaptive cruise control, keyless start, climate air conditioning.



NOW \$11,995

2018 HOLDEN TRAX LTZ

1.4L Turbo, auto, NZ New, only 53,000kms, R/Camera, Bluetooth, Leather heated seats, good buy!



NOW \$18,995

2022 HAVAL JOLION ULTRA

1.5L, turbo HYBRID, NZ new, only 14,800kms, like new, lots of features, leather, great savings from new!



NOW \$32,995

2012 MITSUBISHI OUTLANDER

2.4L, auto 4WD, 7 seater, chain driven, cruise control, parking sensors, tints, alloys, lots of room!



NOW \$14,995

2023 KIA SORENTO PREMIUM

2.2L, diesel, NZ new, only 11,600kms, top model, 7 seater, features galore, great buy for a stunning vehicle.



NOW \$67,995

2019 MITSUBISHI OUTLANDER

2.4L, auto, Black Edition, only 74,000kms, 7 seater, heated seats, sunroof, towbar, be quick.



NOW \$26,995

2022 SUZUKI VITARA TURBO

1.4L, auto, AWD, 1 owner, only 59,904kms, GPS, reverse camera, bluetooth, great savings from new!



NOW \$27,995

2016 TOYOTA HILUX SR5 4WD

2.8L diesel, auto, 4WD, alloys, stone protector, canopy, towbar, running boards, GPS, reverse camera.



NOW \$39,995

2014 NISSAN NAVARA ST

2.5L, manual, 2WD, only 104,000kms, very tidy, towbar, tonneau cover, running boards, black alloys.



NOW \$22,995

SUZUKI

EPIC DESTINATIONS
LEGENDARY JOURNEYS

NEW Jimny 5-DOOR

The new Suzuki Jimny 5-Door has arrived, with roomier interior and ALLGRIP PRO 4WD capability. So grab your crew as it's now even easier to share your big adventures. And tomorrow, you can do it all over again.

TEST DRIVE TODAY. FROM \$40,990* -ORC.

NISSAN THE BIG 1% APR FIXED ZERO DEPOSIT 24 MONTH TERM*

NAVARA QASHQAI X-TRAIL

EXPLORE

*Terms and conditions apply

SANTA FE RUNOUT

Save big on New Zealand's much-loved family SUV

276 & 330 Victoria Avenue, Wanganui. Phone 06 345 5115



David Jones Motors





**Blind
Low Vision NZ
Guide Dogs**
Formerly Blind Foundation

**GUIDE
DOG
PUPPY
APPEAL**



MARCH 22-23

It costs over \$175,000 to train a guide dog



Blind Low Vision NZ is running its annual Guide Dog Puppy Appeal this Friday and Saturday, 22/23 March. Youth from the Cadet Corp have again volunteered to help out by manning the stall on the Friday, which will be at Pak N Save for most of the two days, while other volunteers will be there on the Saturday.

Guide dogs provide so much more than mobility, which by itself is so important to people who are blind or have low vision. They provide freedom and independence as well. They help people to get around safely and confidently. They also make wonderful companions.

But they are not cheap to breed, train and maintain, with costs of up

to \$175,000. This is the chance for all of us who admire the work the dogs do to make a difference by contributing to the breeding and training of a new generation of guide dogs.

The annual street collection plays a vital role in funding practical and emotional support services.

The service includes the following:

- The provision of the

guide dog and its equipment free of charge.

- One-to-one training with a professional Guide Dog Mobility Instructor.

- Customised instructional program to meet your individual needs.

- Follow up and support for the life of the guide dog team.

- Access to financial support in cases of veterinary emergencies or sudden illness.

If you are unable to donate in person this weekend, you can still donate online by going to <https://blindlowvision.org.nz/our-services/guide-dog-services/>



PHOENIX™

Nourish for a Better Life

Premium dog food for all life stages

PET essentials

'Its Where Your Pets Would Shop'

Hours:
Mon-Fri, 8am - 6pm
Sat, 9am - 4pm
Ph (06) 349 0488



Wanganui Vet Services

Hours: Mon-Fri, 8am - 6pm
Sat, 9am - 12pm
Ph (06) 349 0155
24/7 - 0800 738 838

**GREAT PARKING - GREAT ADVICE
from your local pet suppliers**

35 Somme Parade, Wanganui

*Please give to this
worthy cause*

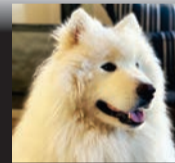


custom colours LTD
Automotive spraypainting

Cnr London & Barrack Sts,
Wanganui

Tony Rees
ph: **06 343 6551**

em: tonyrees@trcustomcolours.com



Harcourts

**Proud to
support the
GUIDE DOG
PUPPY
APPEAL**



Shannon Jury

M **027 823 1851**
P **06 349 0883**
E shannon.jury@harcourts.co.nz
W www.wanganui.harcourts.co.nz

Harcourts Whanganui
Licensed Agent REAA 2008



**Proudly supporting the
Guide Dog Puppy Appeal**



60 Carlton Avenue, Wanganui
Phone **06 345 5672**
Email: info@vetsoncarlton.co.nz
www.vetsoncarlton.co.nz

Caring Professional Service

**REPAIRS OF
SAGGING HEADLINERS
RIPPED & TORN CAR SEATS**



p: 06 347 2114
m: 027 275 0833
e: shaun.terreyuph@slingshot.co.nz
w: www.shaunterrey.co.nz
11 Purnell Street, Wanganui 4500

Do you have excess tomatoes? Try preserving them

By Gina Guigou
Everyone I speak to who has grown tomatoes this

season has had a good crop, and we are coming to the end of them. I have gotten

into the habit, while I have surplus, to put some aside for winter. Some years, I just had a bag in the deep freeze, and when I had a spare tomato just put it in whole.

I have used this recipe a few times as it can be used as pasta sauce, added into stew, added to mince to make spaghetti bolognaise, or in any recipe that you added canned tomatoes; the benefit is that it has the addition of other vegetables.

This sauce can be frozen in containers or bottled.

Savoury Tomato

- 2- 3 onions
- 2-3 stalks of celery
- 2 green capsicums
- 2 red capsicums
- ¼ cup vegetable oil
- 1 tbsp dried basil
- 1tbsp dried oregano
- 1 tbsp celery seeds
- 1 tbsp mustard seeds

- 2 tsp salt
- 2 tsp sugar
- 5kg tomatoes

Dice the onion, capsicums and celery – the size of the dice will affect the look and texture. So if wanting to hide the vegetables cut them small.

Add the oil to a large pot, add the onion, capsicums and celery stir to coat in oil, then heat over a medium heat to cook the veg-

etables without browning them. Stir regularly during this process to ensure even cooking; it will take 5- 10 minutes to achieve this.

Remove from the heat and add in herbs, salt and sugar.

Chop the tomatoes into quarters or eights, depending on their size. While cutting them up remove the core.

Add the prepared tomatoes to the pot, return to

the heat, and bring to the boil, regularly stirring as it comes up to the boil to prevent burning. Boil for five minutes.

Storage options

Place in plastic containers and then freeze. I know someone who freeze their version in paper cups, I have used zip lock bags.

Bottling is another option. Fill clean sterilised jars and top with sterilised

lids. The jars then need to be placed into a pot of water that covers the jars, boiling for 10 minutes. This ensures that the jars seal so they don't go off.

This Easter I'm going to be making my own marshmallow easter eggs, a fun thing to do with others. It can get a bit messy but that gives a reason to lick one's fingers.

OPINION PIECE - Five minutes with the Mayor

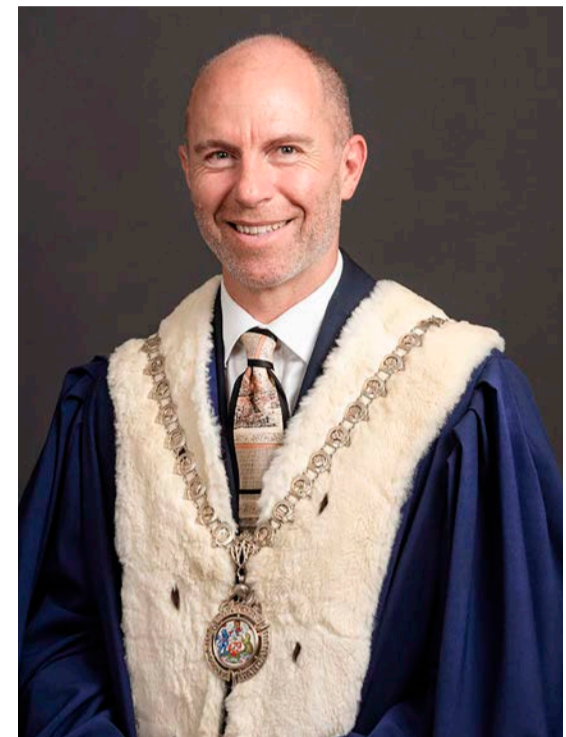
Kia ora koutou,
You will have heard me use the word localism... lots! So what is it? Localism in basic terms is shifting power and decision-making back to citizens and their communities; the opposite of this is centralisation and control from central government to make decisions for us and about us. Localism is a partnership between central government and local government which then further devolves to a partnership between local government and our communities. Here in Whanganui we have a very visible example of the success of localism. Head down to Rangiora Street in Castlecliff and you'll see eye-catching murals, steel and driftwood sculptures, a profusion of colourful succulent plants and a quaint community library nestled in amongst it all. Over several years Rangiora Street has been steadily transformed to give it a unique aesthetic that perfectly fits its sur-

roundings. This didn't just happen as part of the usual council work programme – it was the brainchild of a creative and dedicated bunch of locals who obtained financial backing from the council and other organisations and worked together to drive change. Recently this has been taken a step further with the 'Power up the park' proposal which aims to bring lighting, artwork and wifi to Castlecliff Domain – this is one of the community projects included in the council's draft long-term plan which we're consulting on from 2 April this year.

So at a grassroots level, localism is about councils, alongside Iwi and Hapū, empowering their communities to play a greater role in decision-making to shape the future of the district one community at a time. Sometimes it might look like a project that's entirely led by the community with financial support from the council; at other times the community might be involved in decision-making to varying degrees. Next year – building on the success of the Te Pūwaha port redevelopment project and the Rangiora Street rejuvenation – the North Mole will be revitalised with ecological and environmental work and a new toilet, car park and shared pathways, thanks to community and Hapū-led group Ngā Ringarīngarīngawae securing central government funding for it then approaching the council for further funding through our long-term plan. This proposal is another great example of grassroots localism in action.

At a broader level, localism seeks to keep services delivered locally, rather than switching to a regional or national model. Of course regional planning is important and there are advantages to centralisation and the ensuing economies of scale, but my view it's crucial, wherever possible, to keep things local because we know the voice of our people best, and with this approach we can retain highly-skilled and technical jobs in our district.

Across New Zealand, momentum is growing around localism with councils asking central



Whanganui Mayor Andrew Tripe

government to devolve more decision-making to local government – so we in turn can devolve more decision-making to our communities. Just as central government needs to trust councils to get on with it, we need to trust our communities to get on with it too.

To me localism is exciting because by harnessing the wisdom and skills of our talented and passionate community we will be better able to translate innovative ideas into more creative and community-centred outcomes. Every town has a unique identity to preserve so it makes sense to have local people with diverse skills actively involved in implementing decisions that are tailored to suit our people.

Giving our people the chance to get involved with meaningful planning for our shared future has a positive effect on community wellbeing – one of the core tasks of councils – because it builds social connection. Castlecliff is leading the way on this and I'm interested in how we can build a sense of community in other suburbs as well. If you live in another area and have thoughts on ways to increase social cohesion, don't hesitate to get in touch. I don't have all the answers and I'm keen to hear your ideas.

Since I became Mayor, bringing council to the people has been one of my top priorities and to this end I've established

Community Kōrero sessions, been responsive on social media and held strategic forums on economic, social, cultural and environmental wellbeing into the future. It's important to me that we're visible, transparent and open so I've been a proponent of disclosing information early and upfront. Localism is game-changing because it's about not only listening but going a step further to offer opportunities for active involvement. Together we can achieve so much more.

Key to the success of localism is central government getting on board to fund councils sustainably so we can let our community lead on developing local solutions where possible. Through the Future for Local Government Review there's a once-in-a-generation opportunity to reconfigure the way councils and central government share power and decision-making and evolve together over the next 30 years. In July I was selected to be one of five mayors on Local Government NZ's national advisory group. We're aiming to develop a consensus position from local councils in response to the Future for Local Government report He piki tūranga, he piki kotuku – I'll keep you updated on how that work is progressing.

Ngā mihi nui,
- Andrew

Whanganui Bridge Club results

Bridge Results Week ending 17 March:
Monday MacDonald Pairs:

N/S: 1. R Collins J Holt 60.42 2. H Jarrett R Story 58.80 3. C Brown D Berry 55.56 4. R Rawson A Tims 51.85 E/W: 1. J Thomson H Elgar 60.19 2= B Collins S Skill 58.10 2= J Smith T Jones 58.10 4. B Patrick K Coombe 56.02 **Winners of MacDonald Pairs:** Bryan Patrick and Kevin Coombe

Tuesday Jack Hodge Pairs: N/S: 1. S Pedley T Watson 57.41 2. P MacLachlan G Mulholland 56.94 3. R Sigley D Price 54.86 4. K Verhoek V Baillie 53.24 E/W: 1. D Nightingale P Verhoek 59.26 2. L Vodanovich C Raisin 58.33 3. K & P O'Callahan 53.70 4. A Cave R Austin 50.46

Winners of Jack Hodge Pairs: Don Nightingale and Pieter Verhoek

Wednesday Mollie Christie Pairs:

N/S: 1. T Gunasekara B Charteris 63.75 2. C Winton R Campbell 53.13 3. J Cox-

on J Gillespie 50.63 4. B Cantillon M Ruby 43.13 E/W: 1. K Rainey R Terrey 54.38 2= G Mooney R Story 61.25 2= L Reuters S Skill 51.25 4. B Eriksen S Rainey 47.50

Winners of Mollie Christie Pairs: Karen Rainey and Richelle Terrey

Wednesday Social: N/S: 1. D Price C Pepperell 65.00 2= C Harding J Dodds 57.50 2= J Compton-Schon R Bowie 57.50 E/W: 1. N Kennedy S Poff 62.00 2. B Collins W Pedley 60.67 3. G MacLachlan N Gale 45.33

Friday Social: N/S: 1. B Broome R Parkinson 69.71 2. G Wood J Botting 54.65 3. L Vodanovich J Rapson 53.69 4. R Bowie D Price 52.56 5. S Pedley T Watson 51.92 6. N Kennedy J Dodds 51.28 E/W: 1. K & P O'Callahan 60.58 2= P Paterson G MacLachlan 56.41 2= J Smith A Sutherland 56.41 4. N Bartrum A Hancock 56.09 5. R Sigley I Back 52.72 6. S Watson B Annear 52.24

DIY DEALS

Landscaping | Building | Fencing



See us for all your:

- Landscaping
- Building & Fencing Supplies
- Posts & Rails
- Custom Made Trellis & Gates
- Decking Timber
- Farm Fencing Products

eastown

TIMBER & FENCING

BuildLink
Buy Better Build Better

06 349 0040

4 HOLYOAKE STREET, WANGANUI EAST
WANGANUI 4500

www.eastownbuildlink.co.nz

50 people participated in Pilgrimage for Gaza



Just after 5am, getting ready to start the pilgrimage.

The length of Gaza is 41km, and so was the Pilgrimage for Gaza on Saturday, March 16. Starting at St Luke's Church in Castlecliff, just after 5am, the group walked alongside the river most of the way to Upokongaro. Then it was a return journey back to St Lukes, arriving at 6.15pm.

Organiser Craig Harris says, "Throughout the day, about 50 people participated by walking or cycling at least part of the route, including 12, (one of them an 8-year-old girl), who walked the whole 40.8 km. Along the way, we stopped for prayers and reflections at Pākaitore, Te Ao Hou marae, and St Mary's Upokongaro before doing the same in reverse. The day ended with kai and kōrero and a final time praying the liturgy that we had prayed throughout the day."

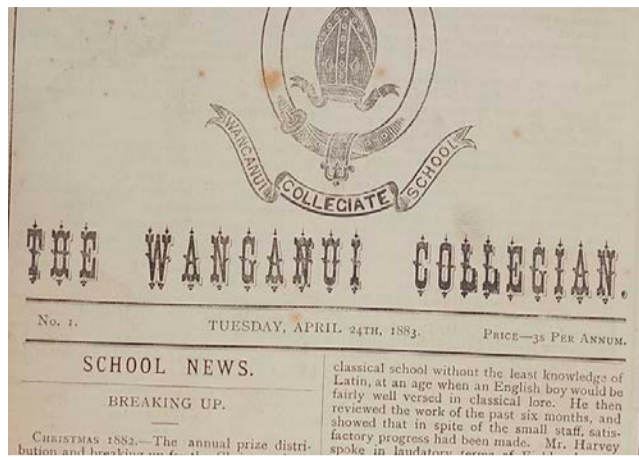
"It was wonderful to have so many people walk/cycle in solidarity with the people of Palestine and to converse, sing, pray, lament, and journey together."

While many of the walkers were Anglicans (the Bishop of Wellington, Justin Duckworth, who is based in Whanganui, participated,) there was a good range of other church and non-church people walking.

There were 13 other pilgrimages around the globe also taking place on Saturday.

Craig says, "We are grateful to the Pākaitore Historic Reserve Board for giving permission to include this special place as one of our stops and to the whānau of Te Ao Hou marae for the welcome and hospitality we received there."

Three outstanding offerings from next Whanganui Heritage Art Auction



Great Barrier Island + Palace of the Alhambra
The Wanganui Collegian – Issue No 1, 1883

March 28 sees the start of Whanganui-based Heritage Art's latest quarterly art auction – the first for 2024.

Henry Newrick, director of the auction house, notes that there is an excellent range of paintings, photographs and prints, many of which have never been seen at auction.

Among the star items in this ten-day online auction are museum-quality paintings by two of this country's more prominent 19th Century colonial artists. The first is a very large oil painting of Great Barrier Island by Harry W. Kirkwood (1854-1925), measuring 110cm

x 150cm. Of the more than 600 paintings by this well-known artist sold at auction over the past 40 years, it is the second largest ever to have been offered. The estimate is a very reasonable \$5,000-\$8,000.

The second work is by Charles Nathaniel Worsley (1862-1923), another very well-known New Zealand artist. On this occasion, the subject is an overseas one, namely The Alhambra Palace in Granada, Spain. Just slightly larger than the Kirkwood, it measures 118cm x 156cm. The work was originally purchased directly from the artist in the 1880s by the Christchurch politician



Sir Heaton Rhodes and hung in the billiards room of his Canterbury estate, Otahuna, for many years. Early last century the work was sold to a Marlborough farming family who, after owning it for around 120 years, have at last decided to sell.

Another item, of possible interest to Collegiate Old Boys, is a complete run of the first 79 issues of the school magazine The Wanganui Collegian. These 79 issues have been consolidated into three leather bound volumes which were presented to

the long standing headmaster Walter Empson upon his retirement in 1909. Empson served as headmaster from 1888-1909 and the books are signed by all the prefects from both 1908 and 1909. They were recently repatriated from the UK by Heritage Director Henry Newrick.

The catalogue for this auction goes online March 27 at www.HeritageArtNZ.com, and the auction begins March 28. Call Henry Newrick on 027 471 2242 for more information.

Marton Harvest Festival

FOOD DRINK STALLS MUSIC

Join us for a day to celebrate the incredibly talented artisans, food and beverage producers locally and regionally and to enjoy the harvest in the myriad forms it takes in our region.

Home brewing competition to celebrate Marton being the Malt capital of NZ
Pumpkin pie competition | Around 150 stalls | Live music
Inflatable activities and rides for kids | Celebrity Te Radar to MC the day and competitions

Sir James Wilson Park, Marton
10am-3pm | Sunday 7th April 2024

'Barista Clean' for cleaning Espresso Coffee Machines developed in Whanganui

Have you ever observed a barista preparing your coffee especially if it is a flat white or a latte? The steamer for the milk has to be wiped after each use. This is normally done by a cloth which sometimes can also be used to wipe the bench and other objects. It can quickly become unhygienic.

There is also the issue if you need an alternative to dairy milk such as soy or almond. This can lead to contamination. A cloth also cleans only the outside and not the inside of the steamer.

Stephen Tier was a successful chef, mainly

in Auckland, but also in Ohakune. However, he developed epilepsy, and this limited his ability to run his restaurant. While he has worked part-time as a chef, he has now turned to an innovative product based on his many years of observation of baristas and espresso coffee machines.

The process is simple. Using the 100% plant-based solution and water in a compact, lightweight cylinder containing circular brushes, the steamer is washed quickly and hygienically. Stephen says, "There will be virtually no residues left over but I rec-

ommend keeping a clean cloth available to give it a final wipe."

The solution can be used for up to 60 cleans.

The process will clean and remove:

- Calcium and mineral deposits
- Milk proteins and plant milk residues
- Biofilms (microorganisms, such as bacteria, that form on and coat various surfaces) and germs.

There are other advantages of using Barista Clean. "Customers will know that they are getting clean coffee, free from impurities, microorganisms, and traces of different

types of milk. The customer will taste the different nuances in the coffee." Baristas will benefit from not burning their hands when they use the cloth on the hot steamer pipe.

Stephen says, "While most of the parts come from China, the recycled plastic is from Axiam Whanganui, and it is all collated here." It is now being used at the Splash Centre.

To find out more or to place an order, go to their website www.barista-clean.co.nz.

Stephen at the Splash Centre with the Barista Clean and the solution.



EPILEPSY NEW ZEALAND
Kia titiro ki te tangata | See the person

Purple Day

Wear purple to support Epilepsy Awareness

Tuesday 26 March

WORLD DOWN SYNDROME DAY

March 21

The impact of epilepsy on Stephen Tier

March 26 is 'Wear Purple on Purple Day' to show your support for people who live with epilepsy. One such person is Stephen Tier.

Back in 2009, Stephen, a successful chef in Auckland, was down in Palmerston North visiting his mother. He took her for a ride to Whanganui and back, but when he was in Tremaine Street in Palmerston North, he fell asleep at the wheel of the car.

Both were admitted to Palmerston North Hospital, but beyond having a face "like a purple mat from the impact of the airbag," he was fine.

However, it wasn't too long afterwards that he had an epileptic seizure and had to be taken to hospital. A few months later he had two more. Stephen admits, "I had been given medication, but thinking I was bulletproof, I had stopped taking it."

Over time he learnt how to switch them off. "When I felt one coming on, typically while watching TV, I would turn the TV up or go outside." But epilepsy had its impact. He had run a restaurant for ten years, and had managed over 150 wedding receptions, but as he says, "Things slowed down. I couldn't remember all the recipes and processes."

"I had to teach myself to ride my motorbike again." He decided he couldn't continue to run a restaurant and worked part-time as a chef. He was passionate about skiing and surfing but developed anxiety, and it is only recently he has been back in the water.

Three years ago, he came to live in Whanganui and has worked part-time in a number of restaurants. He has now developed a cleaning product for espresso coffee machine steamers, which he is bringing to



Living with epilepsy - Stephen Tier

the market. (see the separate article above)

Purple Day is a global grassroots event that was formed back in 2008 with the intention to increase worldwide awareness of epilepsy, and to dispel

common myths and fears of this neurological disorder.

On March 26, annually, people in countries around the world are invited to wear purple and host events in support of epilepsy awareness.

What is Down Syndrome?

Down syndrome is a genetic disorder and is usually associated with developmental delays, mild to moderate intellectual disability, and characteristic physical features. It is the most common chromosomal abnormality, occurring in about 1 in 1,000 babies born each year.

Most of the time, Down syndrome is caused by a random mistake in cell division during early development of the fetus, but not inherited, and there is no scientific research which shows that environmental factors or the parents' activities contribute to Down syndrome. The only factor that has been linked to the increased chance of having a baby with Down syndrome is advanced parental age.

The probability of Down Syndrome increases from less than 0.1% in 20-year-old mothers to 3% in those of age 45. It is believed to occur by chance, with no



syndrome attend post-secondary education.

In adulthood, about 20% in the United States do paid work in some capacity, with many requiring a sheltered work environment. Support in financial and legal matters is often needed. Life expectancy is around 50 to 60 years in the developed world, with proper health care.

Those with Down syndrome nearly always have physical and intellectual disabilities. As adults, their mental abilities are typically similar to those of an 8- or 9-year-old. Commonly, individuals with Down syndrome have better language understanding than ability to speak.

At the same time, their emotional and social awareness is very high. They can have poor immune function and generally reach developmental milestones at a later age.

Brain Injury WHANGANUI

We act as a support service for those who need advice, direction, and assistance with their day-to-day management of a brain injury.

- Liaison Officer
- Support Groups for Clients & Whanau
- Information and Resources about Brain Injuries
- Advocacy service
- Area Whanganui-Waverley-Waimarino-Rangitikei

Community House, Room 104, 60 Ridgway Street | PO Box 102, Whanganui 4541
P 06 347 9721 | M 027 227 1202
E liaison.whanganui@brain-injury.org.nz
FB @BIAWhanganui

Everyday, 90 New Zealanders sustain a brain injury - there's help on hand.

EPILEPSY NEW ZEALAND
Kia titiro ki te tangata | See the person

Purple Day - March 26

Dianne Darbyshire
Epilepsy Educator
Freephone 0800374537
Mobile 0272213657
Email: taranaki@epilepsy.org.nz
www.epilepsy.org.nz

Sommerville Disability Support Services
Encouraging children and young adults to reach their full potential.

Sommerville works with their clients to develop services that assist people to achieve the lifestyle of their choice in the community

- Family Support - Vocational/Life Skills
- Community Participation - Transition Service
- Total Mobility Taxi Swipe Cards
- Disability Parking Identification Permits**
- Wanganui Autism Library

Sommerville Disability Support Services are proud to support

World Down Syndrome Day

Phone 345 0566 Fax 345 0567 (0508 787 767)
45 Campbell Street, PO Box 540 Wanganui
Email: melanie@sommerville.org.nz
www.sommerville.org.nz

WHANGANUI HIGH SCHOOL

F BLOCK UPGRADE



Four Whanganui High School classrooms modernised

Whimsical tales of old Wanganui



By Murray Crawford

Edjamakashun standids

Who says education standards are slipping? If the following article which appeared in the Wanganui Chronicle (30 May, 1883) is anything to go by, they've always been questionable. It referred to "the extraordinary way in which some of the school teachers in the district impart tuition to the youthful mind." School inspector Mr Foulis gave a report to the Education Board about a Feilding teacher.

"He saw the female teacher add up 246 and 606 on the blackboard, commencing the addition at the left-hand figures instead of the right. The result was that the surprising total of 8,412 was offered to the scholars as the correct solution. The same ingenious mistress (who is the holder of a government certificate) also multiplied figures by starting at the left hand, the result, as in the case of the simple addition, being so startling to the horrified inspector that he felt it his duty to inform the board how the State school system was being administered in the district."

In her defence the teacher replied that she had never noticed the mistakes and that it was the plan taught to her in the South Island. "That is evidently the locality in which talents such as hers would be more profitably employed," opined the Chronicle.

An Education Board delegation investigated: "We understand that the committee are fully satisfied with Mrs Brown's general ability as a teacher, but consider that her method of teaching arithmetic is rather calculated to perplex and confuse young children." (Chronicle: 28 July, 1883).

Mr Foulis's own competency came into question when he applied to the Education Board for an increase in salary and referred to his "honourous" duties. "Weakness in spelling is a serious fault in a schoolmaster," decreed the Chronicle. Several teachers also brought complaints against the inspector, although the board chairman ruled that when all parties became better acquainted their grievances would dissipate.

One of Mr Foulis's supporters said that one of the most specific charges brought against him was "that the gentleman was a Scotchman [sic] and the children could not understand him, but they should not heed such frivolous complaints as these."

246
+ 606
8,412

"Whimsical Tales of Old Wanganui" and "More Whimsical Tales of Old Wanganui" available at River City Press. All proceeds to Alzheimers Whanganui.

The classrooms in F block at Whanganui High School "needed refreshment," as Head of the Social Sciences Faculty, Bevan Hunter, described it. Other blocks had been renovated over the years and then it was the time for F block.

However, with the cost of this work increasing, the school, in association with the main contractor, agreed to focus on four of the six classes in the block. Principal Martin McAllen told the RCP that he hoped the school could start work on the other two classrooms by the end of the year.

From classrooms clearly worn down and past their best, the renovated classrooms are now smart and much more user-friendly. The colours reflect the school colours of green and with new carpets and furniture, both staff and students are very happy with the new learning environment.



One of the break-out rooms where the students can study in smaller groups.

There has been some redevelopment of the spaces, with an area

previously a resource room and a toilet block being converted into

break-out rooms for the students. There is also a staffroom for Social Science staff as well as the latest facilities for storing resources.

The renovation project was due for completion for the beginning of Term 2 but it was able to be opened early on Monday 18 March. Some students assisted by helping staff assemble the new desks and teachers have been busy putting up posters.

Martin said, "I'm very pleased with the progress. I met every two weeks with the contractors and key personnel. They were always responsive to our needs and sug-

gestions, especially when we had to change plans."

F block is in the centre of the school, so contractors and sub-contractors tried to ensure deliveries were made before or after school. There were no incidents, with Bevan commenting that while they had odd moments of noise, it wasn't an issue.

It was a challenge for the staff in that with four classrooms out, there had to be a revised timetable and a requirement for some staff to move around classrooms for their teaching. But Martin is able to say, "I'm really happy with the result."



Stairs and ramps for easy access into F Block at Whanganui High School

Jireh Contracting & Engineering (1998) Ltd

11 Karoro Road Wanganui

Ph: 06 344 4746

Mob: 027 237 1904 - Daryl

Email: jirehcontracting@xtra.co.nz

providing engineering services

- Sub contracting
- Construction sites
- Certified Welding
- Maintenance & Repairs
- Light Engineering
- Heavy Fabrication
- Site Safe Members
- SCNZ Members
- Earthquake Strengthening

Proud to be part of the Whanganui High School F Block Upgrade



Proud to be involved with the High School Refurbishment

- General Maintenance Plumbing
- New Builds and Renovations
- Programmed Maintenance
- Drainage and Unblocking
- Gasfitting Service
- Hot Water Systems
- Heating
- Septic Tanks and Wastewater Systems
- Rain Water Tank Installation

06 345 0924

office@thompsonplumbing.co.nz

thompsonplumbing.co.nz

Connecting COMMUNITIES

- Local people
- Local news
- Local opinions
- Local ownership

Your community newspaper, part of the independent community newspaper network.

RIVER CITY PRESS LTD



WHANGANUI HIGH SCHOOL

F BLOCK UPGRADE

Four Whanganui High School classrooms modernised

Claire Libeau, (Deputy Head of Social Sciences Faculty), Bevan (Head of Faculty) with Martin McAllen (Principal)



Bevan (Head of Faculty) in the Social Sciences staffroom



One of the renovated classrooms in F Block



Since 1945

Proud to be involved with the Whanganui High School F Block refurbishment.

Phone (06) 345 2743

Ron Bakker 021 449 173
Email: allan.tong@xtra.co.nz



W&W CONSTRUCTION
2010 LIMITED

Proud to be the main contractor for the Whanganui High School F Block Refurbishment

Thank you to the Client, Consultants, Sub-contractors & Suppliers

ph 06 344 5153 fax 06 344 5110
376 Heads Road, PO Box 844, Wanganui 4540

admin@wwconstruction.co.nz

We are pleased to have been involved with the Whanganui High School F Block Refurbishment

FLOORING XTRA

Hobday & Lorentzen Flooring Xtra
31 Wilson Street, WANGANUI
PH 06 345 5405



Wanganui Steelformers Ltd

COLORSTEEL Zinalume®



Proud to have been involved with the Whanganui High School F Block Refurbishment

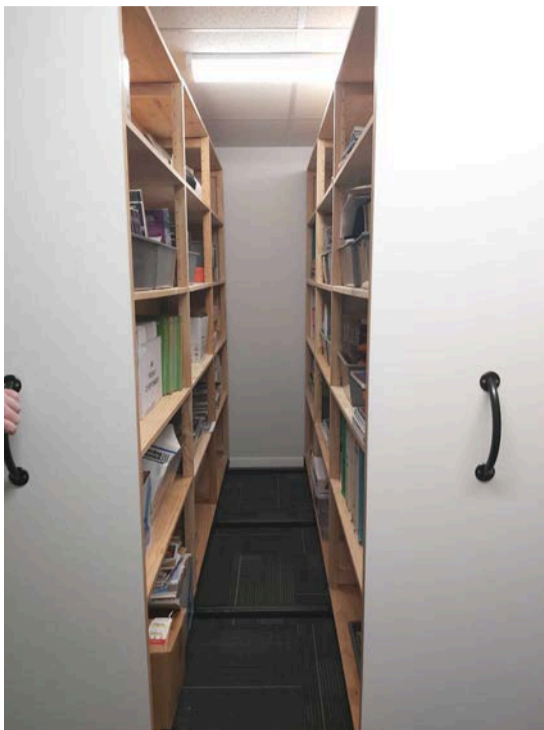
380 Heads Road, Wanganui
Ph 344 5142, 344 4159 or 0800 800 077



WHANGANUI HIGH SCHOOL

F BLOCK UPGRADE

One of the renovated classrooms in F Block at Whanganui High School, including new desks and chairs



New resource storage cupboards

BSMgroup
ARCHITECTS LTD

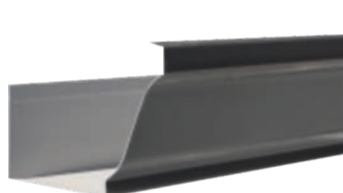


Pleased to have provided architectural services for the Whanganui High School F Block Project

33 Ridgway St, Whanganui
(06) 345 8112
whanganui@bsmgroup.co.nz

Rainaway[®]
SPOUTING ON THE SPOT

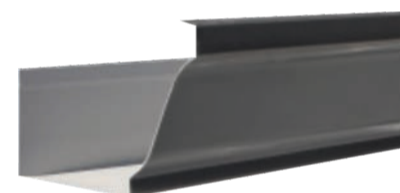
Renovating or thinking about rejuvenating your existing spouting, come and talk to us.



125 CLASSIC



1/4 ROUND



150 CLASSIC



FASCIA 147



FASCIA 185

Proud to have been involved with the Whanganui High School F Block Refurbishment.

- Continuous Spouting in three different profiles
- Traditional Spouting
- Traditional Box Gutter
- External Fascia & Spouting Systems in either Pre-Painted Steel or Timber
- Downpipes
- Rainwater Heads
- Gutter Guard
- Made to measure on-site.
- A range of profiles and 16 colours in colorcote steel, aluminium or copper.
- NZ's only compliant bracket
- Written 10 years 'no leaks' guarantee.

Phone: 06 344 8304 or 0800 50 50 52
Email: officelni@rainaway.co.nz
23 Cooks Street, Whanganui
www.rainaway.co.nz

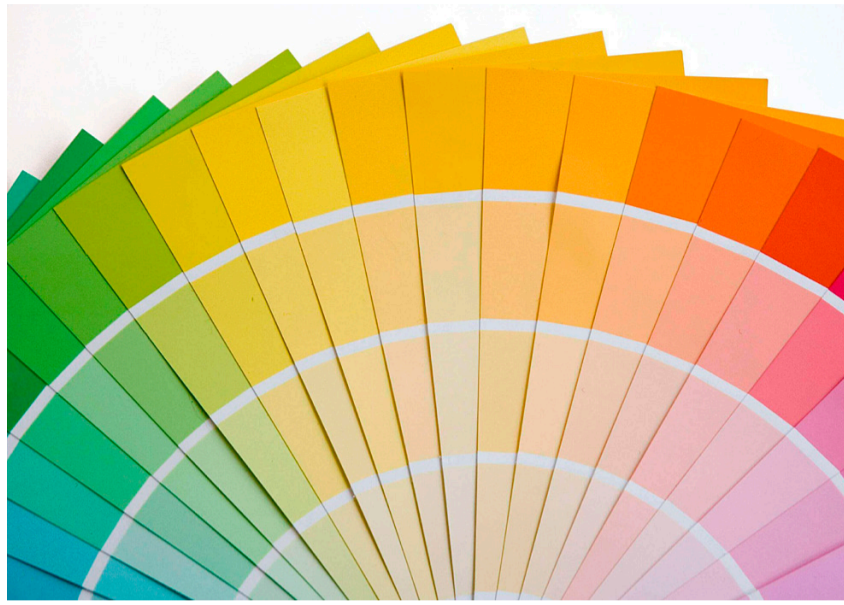
WHANGANUI HIGH SCHOOL

www.whanganuihigh.school.nz

Thanks to everybody for first-class team work completed ahead of schedule

Martin McAllen
Principal

Bringing colour into our lives



For a long, long time white has been king when it comes to interiors and finally we are seeing the end of white on white and really beginning to explore more vibrant colours and warmer neutrals.

In New Zealand, we love white, black and greys, and our interiors often reflect this, but after Covid-19 we have seen people embracing colour, warm neutrals, and texture in their homes a lot more. Our homes, more than ever, are becoming our sanctuaries. Homeowners are wanting to reflect their personalities more; the last few years have been difficult, and we are looking for some brightness and vibrancy in our homes to bring a feeling of joy to our spaces.

Bringing colour into your home doesn't need to be scary; once you understand it and the feel it can bring to

a space, then you can use it with more confidence. The colour wheel is a great resource for anyone thinking about how to bring in colour in a dynamic way and gives you a good understanding of how you can create colour schemes in your space. If you are thinking about painting a room in a different colour than you're used to, grab a test pot, paint it onto some plain A4 paper and stick it on the wall you are painting. Have a look at that paper at different points of the day to see how that colour changes with the different lights – sometimes it can appear quite different to what it looks like in the pot.

Don't be afraid to add colour to your home; whether it be with paint, wallpaper, curtains, furniture, or décor, it really will bring great life to any area of your home!

-Stella Design Co

Current property values

Whanganui's average home value is now more or less the same as it was one year ago. The district's average home value is \$503,378, which is 0% more/less than the same time last year.

The average home value has increased by 0.5% this quarter and 1.8% in six months.

However, it's worth reiterating that sales volumes remain low, so these figures are more volatile than they usually are. As such, we expect to see more peaks and troughs in the coming months.

Meanwhile, the Reserve Bank's decision to leave the Official Cash Rate unchanged means that short-term mortgage rates will remain broadly as they are for the foreseeable future.

"There is still a reasonable amount of uncertainty about what the Reserve Bank will do next – whether we'll see it cut the OCR late this year, or whether we might even see it rise further. Either way, the real estate market doesn't tend to like this sort of uncertainty," Mr Wilson concluded.

- QV (Quotable Value)

Insulmax wall insulation system - for walls of all older NZ homes

The Insulmax wall insulation system has been designed and certified for the walls of all older New Zealand homes with 99.9% of old homes suitable. Insulmax is New Zealand's largest and leading retrofit wall insulation specialist with branches all over New Zealand. Whanganui is currently serviced by Insulmax Manawatu.

One of its advantages is that they use an installation hole smaller than a 10-cent coin. This small size minimises the impact on your home and leaves finished installation points difficult to spot with lasting durability.

The system has Code-Mark certification which demonstrates compliance with the New Zealand Building Code and is approved by all councils in the country. Each wall insulation install is accompanied by a 50-year written guarantee.

There is also an environmental advantage to using Insulmax. It is made from inert minerals and is composed of 84% post-consumer



waste. The system eliminates the need to remove wall linings. An Insulmax install on an average sized home can usually be completed within a day.

But perhaps the main reason to consider Insulmax is the opportunity to cut your heating bills. Stephen, who has the Manawatu franchise says, "it will cut heating and cooling bills by up to 50%." Stephen is a builder by trade and "has done more than a thousand Insulmax installs."

The importance and value of insulating walls can be seen in this example. An average home of 100 sq metres has about 80 sq metres of exterior walls. Heat loss through walls can be between 25 to 35% which is a lot of wasted

heat. Insulmax also cuts down on outside noise, especially good for home owners with noisy neighbours or who live beside busy roads.

Insulmax installers are independently trained, licenced and audited to ensure Insulmax standards are maintained. High resolution thermal imaging cameras are used during and after every install to locate cavities and to make sure the walls have been completely insulated.

For more information contact Stephen on 027 323 1000. You can also find out more information including questions and answers as well as reviews on their website <https://www.insulmax.co.nz>

Stella
STELLA DESIGN CO
KITCHENS BATHROOMS INTERIORS
Professional Kitchen & Interior Designer
www.stelladesign.co.nz NKBA National Kitchen & Bath Association

SELF STORAGE
Easi-stor SELF STORAGE
KAIKOKOPU RD WANGANUI
06 347 7867 or 0274 975 445
www.therentcentre.co.nz

Self Storage units means secure storage with 24/7 access with a locked and lit compound with a high security fence.

Sizes from: 5.1m³ to 48.6m³

Prices from \$7 per week

Discounts for extended rentals and for pre-paid arrangements.

BEFORE YOU RENOVATE - INSULATE!

Internal External Ceiling

'Contact us today and start saving tomorrow'

INSULMAX
WALL INSULATION SYSTEM

Our install teams are all trade certified. [insulmax.co.nz](https://www.insulmax.co.nz)

CONTACT: Stephen Jestin 027 323 1000 or Email: kathleen@insulmax.co.nz

**ARTISTS
OPEN
STUDIOS**
WHANGANUI
Te Taonga Toi O Aotearoa
The Arts Destination of New Zealand
2024

FINAL WEEKEND

Whanganui: the eclectic art capital of Aotearoa
Download the trail guide at openstudios.co.nz
or purchase from isite for \$5.00

Image: Landscape of a butterfly wing 2, by Denise Midgley.

Gin meets photography in distillery exhibition



Castlecliff - photo by Adrian Rumney

Papaiti Gin, known for its award-winning craft spirits, is excited to announce an innovative fusion of art and distillation with an exhibition showcasing the photography talents of co-founder and distiller Adrian Rumney.

This captivating exhibition, titled "Beyond the Still: Landscapes Unveiled," will offer a glimpse into the creative vision of Adrian beyond the realms of distillation. Far from the stills and beakers that define our craft, Adrian's lens transports viewers to serene mountains, lush forests, and expansive seascapes.

"We're thrilled to share Adrian's passion for photography with our community," says Nikki

Oesterle, spokesperson for Papaiti Gin. "This exhibition serves as a testament to Adrian's multifaceted talents and provides a new perspective on the artistic endeavours of our team."

The collection features a diverse range of land-

scapes captured by Adrian during his travels across the country. From the rugged beauty of remote wilderness to the tranquil allure of hidden gems, each photograph invites viewers on a journey of exploration and discovery.

What sets "Beyond the Still: Landscapes Unveiled" apart is its departure from the traditional narrative associated with distilleries. While the art of crafting fine spirits remains at the heart of Papaiti Gin's ethos, this exhibition underscores the depth of creativity and expression inherent in our team.

"We want to challenge perceptions and inspire dialogue," adds Nikki Oesterle. "This exhibition

is a celebration of artistry in all its forms, and we're excited to invite our community to experience Adrian's captivating vision."

As part of Whanganui's Artist Open Studios event, "Beyond the Still: Landscapes Unveiled" will be open to the public from 15 March to 24 March at the Papaiti Gin Distillery. Guests are invited to immerse themselves in the beauty of Adrian's photographic journey and discover a new dimension of the Papaiti Gin experience.

For more information, including exhibition hours and special events, please visit papaitigin.co.nz or contact info@papaitigin.co.nz



Adrian

Bricksticks Furniture & Twin Kilns Gallery

Open for business this weekend...

March 23-24

For more information about the Artists go to bricksticks.co.nz and follow artists at Twin Kilns Gallery at Bricksticks on Facebook.

Off road parking.

From 9.30am to 4.30pm each day.



18A Georgetti Road, Whanganui

Phone 027 764 9398



The PETBUS will be coming through Whanganui this Sunday

The PETBUS has been transporting animals throughout New Zealand for the past twenty years and as they say, "our experience in the Pet Transporting business and our very high reputation means you know your pet is in safe hands."

The PETBUS specialises in transporting working dogs, cats, kittens, family dogs, puppies, and all your furry and feathered friends.

The animals travel in individual air conditioning comfort and have 24-hour care while in transit. The PETBUS complies with the 'Code of Recommendations and Minimum Standards for the Welfare of Animals Transported within New Zealand.' It also holds a full Goods and Service License to operate this business, as this is a legal requirement for Pet Transporting.

It is important that those who want to transport animals should check with Pet Transporters to make sure they comply with these regulations and have the appropriate experience and professionalism.

The PETBUS recognises that animals being transported can be stressful to them (and to you), and they promise to make it as stress-free as possible.

All pets are transported at the owners' risk, but The Petbus offers insurance options



that covers your pets in the case of a vehicle accident while in transit and full insurance for your pets as well.

Go to their website www.petbus.co.nz for all information and

bookings. They have a Petbus leaving Auckland on March the 23rd, via Taranaki and Hawkes Bay and will be in Whanganui on the 24th of March.

Judging by the reviews

on Wisemove, where they have received 4.9 out of 5 rating from 78 reviews, it is understandable that they say, "We are proud to say we are the best in the business."

Petbus Limited

"We Treasure them too!"

New Zealand Wide Pet Transportation

Call Us Today! ☎ 027 332 1991

- Working dogs
- Kitten & Cats
- Puppies & Dogs
- Birds, Reptiles & Poultry
- Rabbits, Guinea Pigs, Mice & Rats
- Goats, Lambs & Piglets

24/7 care provided in a fully temperature controlled environment

Monthly Runs Around New Zealand With many towns and locations serviced from Auckland - Taranaki - Whanganui/Manawatu - Hawkes Bay - Wellington - Marlborough - Canterbury/Christchurch - Dunedin - Invercargill - Return

www.petbus.co.nz





Property Brokers

Whanganui 52 Ingestre Street



Right size offices

This upstairs office space is well-presented and offers a very comfortable working environment. They form part of a larger building, located on a busy corner section, part of a key thoroughfare for traffic commuting around the city. The elevated height of the building gives great signage options to 2 Streets. If you are looking to treat yourself to an upgrade on your current offices, or maybe downsize your rent, then this may well be your best move.

For Lease \$16,502 pa + GST
View By appointment
Web pb.co.nz/WGC174802

Richard White
M 027 442 6171

United make record sixth Coastal Challenge Cup final after semi-final derby triumph over Marist

Property Brokers United has the undisputed best semifinal record in the history of the Coastal Challenge Cup after their sixth victory from seven attempts on Saturday.

In something of a mild upset given the different buildups, United claimed supremacy in the 'old firm' rivalry with a 21-run shutout of a gutted Wanganui Vet Services Marist

in a weather-reduced 40 over matchup at Tasman Tanning (Victoria) Park.

Guided superbly by Greg Smith (101 not out from 101 balls), who carried his bat at opener through

the entire innings, United regrouped from losing early wickets and then a succession of scalps in the middle order to bat out their overs and raise a challenging, although at

the time, seemingly insufficient 207-8.

Reinforced by a couple of returning veterans to a squad that ran down 322 to win against Weraroa CC the weekend before, Marist were naturally confident their deep batting lineup would reach the target, especially when in-form openers Tim O'Leary and potential competition MVP Joel Clark (46 and 4-31) had them away to a flyer with 64 runs after 10 overs.

Early on, it seemed Marist's top form coming into the match would see them through as Smith lost Zeb Small, Matthew Boswell and Carter Hobbs in short order to Clark and Connor O'Leary (2-37) to leave United struggling at 36-3.

United had to wait an

extra 24 hours to learn who they will be facing as overnight wet weather in Masterton meant the Burger King Red Star vs Kapiti Old Boys semifinal was postponed until Sunday's reserve day.

Kapiti made it two wins over the Wairarapa, holding out by 14 runs to send the final to Victoria Park this weekend.

Both the CW Premier 2 and Premier 3 competitions came down to the wire to complete next weekend's grand final picture.

In Premier 2, the Whanganui Renegades were not able to hang onto second place, as the unbeaten Matt Burke Engineering Marton Saracens cruised to a six wicket win at Centennial Park.

That opened the door, and the Whanganui High

School 1st XI walked straight through it, securing a quick victory over Property Brokers United P2's at Victoria Park to keep alive their hopes of a championship double after previously winning the P2 Twenty20 title in January.

In Premier 3, the unbeaten Kaitoke Knight Riders confirmed their championship favouritism with an eight wicket win over Whanganui Collegiate P3's at the school grounds.

Wanganui Vet Services Marist 2nd XI secured a big win over Awa City Cavaliers at the Springvale fields, but it wasn't enough to snatch the other final berth, as Matt Burke Engineering Marton Saracens P3's got the win over WHS P3's to secure their spot.

Sport Whanganui announces new Chief Executive appointment



Danny Jonas with Sport Whanganui's new CE, Tania King.

The Board of Sport Whanganui is delighted to announce the appointment of Tania King as its new Chief Executive.

Tania is no stranger to Sport Whanganui, having been with the organisation since 2020 as Corporate Business Manager. In this and her earlier roles as Chief Operating Officer of the New Zealand International Commercial Pilot Academy and as Principal at Whanganui Girls' College, Tania has built considerable experience in leadership, innovation, and financial planning and implementation.

Sport Whanganui Board Chair John

Unsworth said the Board is delighted to have appointed Tania as a successor to Danny Jonas, who moves on after 15 years in the role at the end of this month.

"After an extensive recruitment process, we are very pleased that Tania is stepping into the role of Chief Executive. Tania will provide consistency with a smooth changeover and is extremely well respected by both her colleagues and our partners throughout the region.

"We had significant interest in the role, but Tania impressed the Board with her vision for the future of the organisation, building on the re-

lationships and influence that Danny and the Sport Whanganui team have developed within the sport, recreation and wellbeing sectors while retaining the special culture of the organisation."

Tania said the move is especially significant having worked alongside Danny to develop a dedicated team culture, something that staff really value and appreciate, and the Board were keen to maintain.

"I believe that the success of an organisation is based on the people – he tāngata, he tāngata, he tāngata. The people involved, their values, ethos, and passion for

what they do and want to achieve determines the outcome and environment.

"I am excited about the opportunity to lead Sport Whanganui and contribute to the development of active, strong, and connected communities in the Ruapehu, Rangitīkei, and Whanganui regions. I am also keen to ensure Sport Whanganui continues to be an influential and impactful partner with Sport NZ, Councils, health providers and funders; while making active opportunities easier to access."

Tania will start in the role on Monday 25 March 2024.

Fourth place for Whanganui driver



Supplied by Darryl Seymour

Palmerston North NZ Mini Sprint Grand Prix meeting held March 16.

Pictured is Race 4, Minisprint Heat 1, 12 laps. 53v was Brad McDonald from Whanganui and 2NZ is Elliot Heron who placed second.

Brad McDonald (Whanganui) was the highest placed Whanganui driver with a 4th in Heat 1, and 11th in the 25 lap G.P. feature race, which had 18 starts and was won by Elliot Heron.

- Golf results -

Castlecliff 9 Hole Club Thursday, 14 March

MC Medal Ladies: Elaine Everitt 34, Anne Cox 36, Marilyn Edmonds 37

Men: Brian Elliott 32, Rodney Mence 35, Richard Smith 35

Raffle: Marilyn Edmonds * * *

Castlecliff 9 Hole Club Thursday, 19 March, Stableford

Ladies: Anne Cox 19, Joan Coxon 13, Raawinia Connors 12 Men: Paul Watkins 21, Tony Hore 19, Bryan Cameron 17 c/b Raffle: Joan Coxon



Prepare for WINTER

The Wool Company products will help keep you warm this winter

Just before Taihape, on your way north, is the small village of Utiku, just off the highway. If you look across you will see The Wool Company — a world-renowned company selling merino and

possum yarns and garments, both in the shop and through a thriving on-line catalogue.

Margo Riach, whose father Gordon started the company 65 years ago, spoke about the development of the

business at the NZ Woolclassers Association 2023 North Island Industry Day, held in Whanganui last year.

Gordon worked on farms and wool stores around Hawkes Bay after gaining a Wool Diploma from Massey. In 1958, he noted that there were 57 other wool buyers from Tolaga Bay through to Woodville, so he set up his own store at Utiku, expecting to be there for about five years. "Mum is still there."

He constructed a purpose-built store complete with a dag crushing plant, which provided higher yielding and cleaner wool for scouring. Margo said, "Gorden kept

modernizing, initially supplying wool for carpets, until he developed wool-based barriers to clean up oil spills — until unable to compete with synthetic alternatives.

The company became "accidental retailers", and that is now the core business for the company. "He was offered knitting yarn from a cancelled order and needed other wools to complement it."

The business grew, and by 1992, they started their first mail-order catalogue with 500 customers. They now post it out to 30,000 people. They became early adopters of the Internet in 2001.

They source their fine Merino wool from Marlborough but have to have it spun in China. This is combined with possum wool and into the future with a 30% bamboo yarn. This combination avoids any itching feeling when wearing a pullover on the skin.

Their offerings of a summer weight merino/bamboo, breathable shearer's singlet as well as a farmer's shirt with a Merino inner and a crossbred outer were clearly popular with those at the Industry Day.

They have also expanded into socks, men's wear and baby wear.

Take extra care when cutting wood

The Physiotherapy Hand Clinic wants to get the message out there — 'Splitters are for wood, not for hands'. Many people will be thinking it is time to get some more wood in, and get the chimney cleaned. Some people get cords delivered, others decide to chop and split their own using a mechanical wood splitter.

Juliet Brodie from the Clinic says, "Over the last few years we've noticed a seasonal increase of devastating hand injuries; hands caught in these powerful machines. Often the results affect people's lives permanently."

She explains: "Accidents with wood-splitters happen when people:

* are not experienced in using the machine;

* get gloves caught in them;
* are tired;
* get distracted;
* are working in pairs.

She recommends that when using these machines, please:

1. Read the instructions: know how to use the machine.

If you are hiring a machine, listen to the instructions you are being given.

2. Stop if you are tired. Go and have a "cuppa".

3. Keep your mind on the job; don't allow others to distract you.

4. Don't wear gloves

5. If working in pairs always know where the second person is before pushing the button. It is safer for one person to use the machine — take turns."



The Wool Company – Utiku

- Tips for drivers for safer winter trips -

1. Keep your wind-screens clean — inside and out and washer water full.

2. Replace windscreen wiper blades if they're smearing or not clearing rain completely.

3. Check your tyre tread depth is good and tyre pressure is accurate.

4. A winter service that checks battery and fluids (including antifreeze) could save you a big breakdown headache.

5. Make sure you are prepared for being stuck out — whether it's due to a crash or bad weather. Permanently keep these things in your car:

- battery jumper cables and other basic breakdown tools
- a torch and gloves
- a first aid kit and

blankets

- drinkable water and a few snack bars

- a fully charged cell-phone.

6. Consider whether you really need to travel if the forecast is bad. If you do, try to drive in daylight hours.

7. Always turn on your lights if it's raining or a bit gloomy.

8. In heavy rain or icy conditions, you need to increase your following distance from two to at least four seconds and if you get caught in a down-pour slow right down or pull over if you can.

9. Motorists should be extremely cautious of trying to drive through any flooded roads. It can be hard to tell how deep or fast flowing the water

is, or the road could be washed out, so if in doubt don't risk it."

10. If it's very cold you need to beware that there could be ice, particularly on shady sections of road and on bridges. Clear, still nights and mornings can be deceptively risky. Often you can't see ice, so when the temperature has plummeted or there is frost around, you need to drive cautiously.

11. Watch your speed and increase following distances. You need to be in a position to react safely when the unexpected happens.

COMBINED Plumbers
Plumbers • Gasfitters • Drainlayers

JAYLINE
your fire place

COST PRICE SALE
on these 3 log burners

70 Wilson St - Whanganui
(06) 347 69 70
Simon 0274811353
combinedplumbers@xtra.co.nz

WOODY'S TYRES

"Your Local Tyre Guy"

Call in and see us for...

- tyres
- mags
- wheel alignments
- and more

Phone 343 8706
191 Somme Parade, Wanganui

Physiotherapy Hand Clinic

IN GOOD HANDS

Juliet Brodie

NZ REG. PHYSIO AND HAND THERAPIST

Anja Edgecombe

NZ REG. OCCUPATIONAL AND HAND THERAPIST

We specialise in the treatment of elbow, wrist & hand injuries & conditions.

p. 06 345 1198 • 18A Bell Street, Wanganui

THE WOOL COMPANY.

Merino Knitwear
Made in New Zealand

Country Store: 65 Torea Street,
Utiku, South Taihape

Lookbook Available: 0800 60 70 10

Prepare for WINTER

Get your firewood sorted for winter now

Got wood?

Buy and store your firewood now before winter!

An easy method to follow is to 'Split, Stack, Store' your firewood:



Split wood into pieces 15cm thick before you stack it - logs dry faster when split.



Stack split wood loosely off the ground in a criss-cross pattern to let dry air circulate around it.



Store wood in a dry place with the top covered for 6-12 months to allow it to season.

For more air quality tips, scan the code below



For more information visit www.horizons.govt.nz or freephone Horizons on 0508 800 800



Horizons Regional Council is reminding those with fireplaces and wood burners to get their firewood sorted now so it's ready to go when the winter cold hits.

Horizons environmental scientist Harold Barnett says sourcing and storing your firewood in the summertime is a great way to not only be prepared and save hassle later, but also saves you money.

"It can be a lot cheaper to buy green or wet wood now and prepare and store it correctly to allow it to dry in time for winter, rather than having to buy dry wood when you need to burn it," says Mr Barnett.

"When buying firewood, you can ask for the moisture content from the supplier, or test the wood yourself if you have access to a calibrated moisture meter.

"Only burn wood with a moisture content of 25% or less. Anything higher than this should be left to dry or season for longer. Green or wet wood emits more fine particles into the air and produces a thicker smoke than dry wood, contributing to poorer air quality.

"Being aware of the quality of your wood before you burn it can help your fires emit more heat and lessen your carbon emissions output. Doing your bit helps keep our air quality clean, healthy and safe for all in the chilly winter months."

Mr Barnett says some areas in the Horizons Region are more prone to air quality issues.

"Horizons has two gazetted airshed sites in Taihape and Taumarunui, in which we monitor for fine particles in the air.

"These areas commonly have air quality issues in the winter due to home heating, climate and local topography. That's why it's even more important for people in these areas to be aware of this issue and take steps now to check their firewood is stored right and book in a chimney sweep.

"A handy tip for preparing your firewood stock is to remember to 'Split, Stack, Store':

- Split wood into 15cm-thick pieces before you stack it – logs dry faster when split.
- Stack split wood loosely off the ground in a criss-cross pattern to let dry air circulate.
- Store wood in a dry place with the top covered for 6-12 months to allow it to season."

Mr Barnett says checking your chimney or



wood burner now is also a good idea, as a dirty chimney can be a big contributor to poorer air quality and can cause chimney fires if left unchecked.

"Have a look in your chimney or wood burner – if it's got a build-up of soot, or smoke emits from the door when opened while you've got a fire going, it's in need of a sweep.

"Get these things sorted now to save hassle so

you're ready to get the fire going when it starts getting cold."

For more information about air quality and burning good wood in the Horizons Region, check the Horizons website at www.horizons.govt.nz/managing-natural-resources/air. You can also visit LAWA's website for the full national air quality picture at www.lawa.org.nz/explore-data/air-quality/.

Helpful tips on heating

1. High wattage doesn't necessarily mean it is more expensive – a lower wattage heater may just take longer to heat the room using more power. It's more about choosing the right heater for the right size room.

2. Minimise drafts and heat loss around windows and doors by closing curtains and using draft stoppers.

3. If your heater has a thermostat, set it to high and then when the room reaches a comfortable temperature adjust your thermostat to match. This will help you decide your own level of cosy and save you from overheating the room and wasting power.

4. A timer that switches on and off automatically can also save you money – set it to warm up the house before you get home, there is no need to leave it running all day.

5. Energy meters are a great tool which allows you to monitor the energy/power your heater is drawing.

Chamberlain Electrical

workmanship with pride

Jono and his team of friendly, dedicated and skilled electricians are your choice for quality residential and commercial electrical services.

Call now for your free quote.

Phone: 06 348 9334
Mobile: 027 453 5100
22 Dublin Street, Whanganui
www.chamberlainelectrical.co.nz

EASTSIDE FIREWOOD

ALL TYPES OF QUALITY DRY FIREWOOD SHED STORED

ORDER ON OUR WEBSITE eastsidefirewoodwanganui.co.nz



AVAILABLE ON OUR TRUCKS

WINZ QUOTES AVAILABLE

Phone 343 8466

ONE STOP SHOP FOR ALL YOUR FIREWOOD NEEDS

Prepare for WINTER

~ Choose the heat for your home ~

- by Mark Graham

When looking to heat a home, it's important to consider the wide variety of heating methods on offer. An under-heated home can lead to illness and poor health. Creating a warm, dry and comfortable home should be a top priority.

Heating options are far now greater than they were a generation ago. Electrical, gas, new super-efficient wood fireplaces, gas fires, in-concrete floor hot water or electrical heating units, central hot water heating, heat pumps and air conditioning units and home ventilation systems are just some of the popular heating options to choose from.

Because the heating needs of every dwelling are different, you need to undertake heat loss calculations based on: the size of your home, the materials used for construction, whether your home is north or south facing, the size and number of external walls and the number of windows and doors.

The World Health Organisation recommendations for room temperatures are:

- 21 degrees Celsius in living areas
- 18 degrees Celsius in

bedrooms

- 22 degrees Celsius in bathrooms.

Start with insulation – keep in the heat you have, then add heaters to warm you up. Insulation will also reduce temperatures in the summer.

Considerations

- Ensure you have an abundance of insulation – remember, building code requirements are a minimum.
- It's important that whatever system you install is of sufficient capacity to heat your home properly – too small a unit will result in expensive bills and insufficient heating.
- Some heating system installations require a building consent and registered installer.

The modern approach to heating is 'whole house heating'. Good insulation and an energy-efficient heating system will heat all areas of the house at a reasonable price and help keep your family healthier through cold months.

Central heating

Central heating can be fuelled from gas, diesel, solid wood pellets or hot water heat pump, can work through warm water underfloor heating or slim water radiators (and sometimes both), with

the possibility of adding domestic hot tap water and even swimming pool heating all from the one heat source.

Modern wood burners and wood pellet burners

- They are inexpensive to run, energy-efficient and surprisingly environmentally friendly.
- They have the advantage of being able to be connected to a wetback, which will provide hot water at no extra cost apart from the installation.
- You'll need a building consent to install a woodburner or pellet burner and have these installed by a specialist installer.
- The council will have to inspect the burner before issuing a code compliance certificate.

Underfloor heating

These work with any floor type but care should be taken with wooden overlays as there is potential for shrinkage. Electrical systems are cheap to install but the running costs are higher. The high cost of gas in the South Island also makes these systems more expensive to operate there. Running pipes in your concrete floor slab even if you don't intend

to use them initially, will future-proof your home and may add resale value.

Heat pumps and air conditioning

Correct sizing is crucial for long-term trouble-free and economical running of your heat pump. If it is too small in capacity (kW), it may be cheaper to buy initially, but it will struggle to heat the area, resulting in the unit having to work much harder, making it less economical to run and dying early. Options run to wall units, floor units, ceiling units or fully ducted – choose the most suitable for your space and house design. You don't need a building consent to add a heat pump to your home but this must be installed by a qualified installer.

Modern ventilation systems

These are not usually heating systems, unless those add-ons are included, but may help heat your home through replacing moisture-filled atmosphere. Modern construction seeks to seal a home to increase energy efficiency which means you may need to have a system installed. "Heat Recovery Ventilation" refers to having

warm, stale air being removed and replaced with fresh. This aids energy efficiency but works better when it's already warm, which is just when you don't want more heat.

Solar

Solar panels provide essentially free hot water. Any excess can be diverted to heating a pool or added into a floor heating system. During winter months solar will require back-up heat supplementation. Power and gas prices are continuing to rise and are forecast to increase sharply as demand increases – solar is renewable, sustainable, efficient and reduces hot water heating costs.

Gas heaters and fires

Fast, convenient and easily regulated heat, gas can bring a moderately sized room to a warm comfortable temperature in about 10-15 minutes. Energy Star rated flued gas heaters are



the most efficient and won't release moisture or harmful gases into your home. Glass-fronted gas fireplaces are significantly more efficient than open fronted and create much smaller carbon footprints. If you live in an area that has no gas supply, you can have tanks that are delivered to you, last for months and only get changed out as required. To learn more about

the different types of heating, building consent requirements, registered installers and council code compliance certificates, visit MBIE's Smarter Homes website.

This article first appeared in the New Zealand Building Guide. Read more about building your dream home at buildingguide.co.nz. - www.realestate.co.nz



ARE YOUR TREES WINTER READY?

Call Beaver Tree Service Today!

Your Local Arborists & Tree Care Experts



DIFFICULT & LARGE REMOVALS



VIEW RESTORATIONS & REDUCTIONS



PRUNING FOR HEALTH



TREE & HEDGE TRIMMING



STORM DAMAGE & SITE CLEARANCE



BEAVER TREE SERVICE

0800 423 283

www.beavertree.co.nz



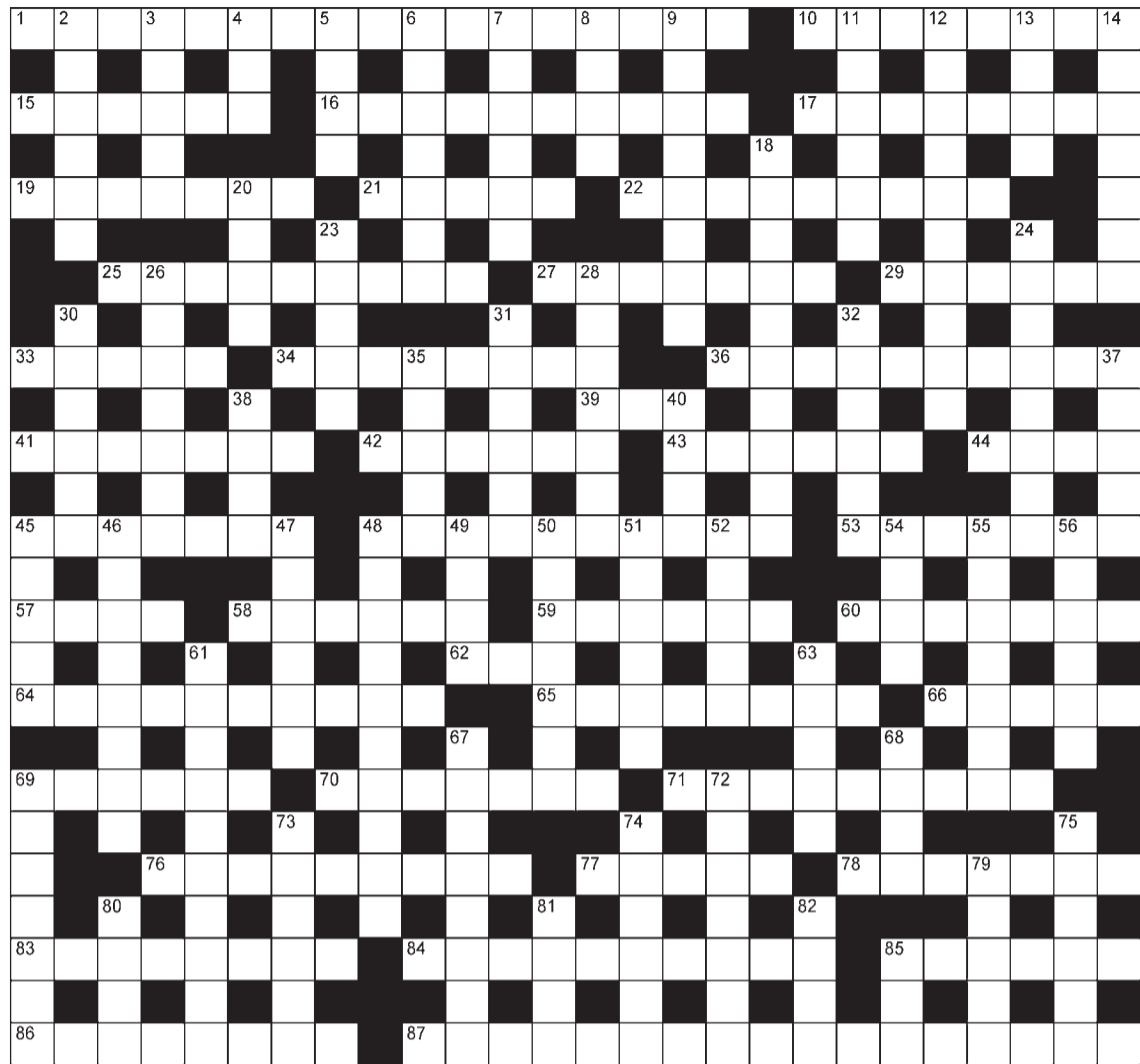
- ❖ Supply, installation, servicing & repairs of all types and brands of heat pumps.
- ❖ All commercial and residential electrical work: Board rewires, lighting, repair and installation of any of your electrical needs.
- ❖ Vehicle air conditioning re-gas available
- ❖ Registered Electrician

Phone 027 565 6734 ❖ email: rtheatpumps@gmail.com



Jumbo crossword

- ACROSS**
 1 Totally wasted funds (5,4,3,5)
 10 Leather slipper (8)
 15 Go back on a deal (6)
 16 Declare ineligible (10)
 17 Maker of hats (8)
 19 Lecture to enthuse (3,4)
 21 Welded together (5)
 22 Rows (9)
 25 One giving remedial treatment (9)
 27 Easily bent, flexible (7)
 29 Furrow (6)
 33 Ornamented (5)
 34 Coffee stirrer (8)
 36 Grasp mentally (10)
 39 Fuel (3)
 41 Long eventful journey (7)
 42 Nightfall (6)
 43 Customer (6)
 44 Naked (4)
 45 Port in Belgium (7)
 48 Genealogy chart (6,4)
 53 Very loyal (7)
 57 Surprise attack (4)
 58 Gregarious (6)
 59 Soldiers (6)
 60 Medley (7)
 62 Top (3)
 64 Wagon builder (10)
 65 Singly (3,2,3)
 66 Hidden store (5)
 69 Repeated (6)
- 70** One of the senses (7)
71 Colleague (9)
76 Bewildered (9)
77 Deadly (5)
78 Huntsman's cry (5-2)
83 Asymmetrical (8)
84 Put on a pedestal (10)
85 Doubtful (6)
86 Drew plans for (8)
87 Concession that a person must be regarded correct, if the contrary has not been proven (7,2,3,5)
- DOWN**
 2 Followed orders (6)
 3 Incident (5)
 4 Expected (3)
 5 Broad (4)
 6 Paper hankies (7)
 7 Gave the slip (6)
 8 Regulation (4)
 9 Unceremonious (8)
 11 So evil (anag)(6)
 12 Method of curing drug addiction (4,6)
 13 Ballad (4)
 14 Provide commentary for (7)
 18 Beheading device (10)
 20 Entice (4)
 23 Seller's chat (5)
 24 Weather prediction (8)
 26 Metal cutter (7)
- 28** Drawn-out (7)
30 Set (6)
31 Miniaturised tree (6)
32 Unlocked (6)
35 Steam bath (5)
37 Fearful anticipation (5)
38 Cherished (4)
40 Skin mark (4)
45 Direction indicator (5)
46 Gloaming (8)
47 Extreme abnormal fear of (6)
48 Scared (10)
49 Grain-grinding machine (4)
50 Disappointment (7)
51 Plasterer's tool (6)
52 Drain (5)
54 Check and correct (4)
55 Live longer than (7)
56 Ribald (6)
61 Adding sugar (10)
63 Merger (5)
67 Hideous, grisly (8)
68 Passport endorsement (4)
69 Breathed out (7)
72 Hair cleaner (7)
73 Orb (6)
74 Pacific island (6)
75 Winged child (6)
79 Catching-rope (5)
80 Musical work (4)
81 Small island (4)
82 Horizontal mine entrance (4)
85 Employ (3)



We do the *home* work for you.

Ngairé Evers Simms M 021 033 7711 P 06 349 0883

Hans Vanderschantz M 027 245 3532 P 06 349 0883

Harcourts Whanganui Licensed Agent REAA 2008

Harcourts

SIMON SHUKER'S CODE-CRACKER Extra 801

EACH number in our Code-Cracker grid represents a different letter of the alphabet. For example, today 22 represents Z, so fill in Z every time the figure 22 appears. You have one letter in the control grid to start you off. Enter it in the appropriate squares in the main grid and solve the starter word. Fill in other squares in the main and control grids with the found letters and look for the next word. Follow the word trail through the puzzle to its completion. www.codecracker.co.nz

1	2	3	4	5	3	6	7	8	9	10	11	12	13	14	14	14	14	14	14
10		4		11		2		12	13	14	14	14	14	14	14	14	14	14	14
14	15	6	16	4	12	17	11	13		4									
3		2		14		4		14		18	16	12							
19	14	3	20		16	1	12	14	9	12									
			17			21		12		22									
12	11	6	17	3	10		4	14	9	17	4	14							
23				10		19		12		13									
16		12	16	10	10	14	13		3	6	13	14							
17	4	24		3		13		25		10		13							
4		16		18	4	17	26	3	19	17	14	4							
5	11	13	14	7		3		19		13		11							
12		24			18	10	16	14	18	14	10	10							

Control Grid:

1	14
2	15
3	16
4	17
5	18
6	19
7	20
8	21
9	22 Z
10	23
11	24
12	25
13	26

Alphabet: A B C D E F G H I J K L M N O P Q R S T U V W X Y Z

Sudoku

							6	9
	7				1			
8				6		1		
	2	3		1	9	8	7	
			7		6			
	1	7	3	8		4	2	
		5		9				2
			8				5	
4	3							

HARD

Fill the grid so that every column, every row and every 3x3 box contains the digits 1 to 9.

Previous solution

4	3	6	5	9	8	1	2	7
1	5	2	7	4	6	3	9	8
7	8	9	3	1	2	6	4	5
6	4	3	2	5	7	8	1	9
9	7	8	6	3	1	4	5	2
2	1	5	9	8	4	7	3	6
5	9	1	8	6	3	2	7	4
3	6	7	4	2	5	9	8	1
8	2	4	1	7	9	5	6	3

Previous crossword solution

ACROSS: 1 Ashen, 4 Crocodile tears, 11 Dress, 14 Honey, 15 Sarcophagus, 16 Maltreat, 19 Western, 20 Entry, 21 Ice hockey, 24 Satellite, 26 Rattle, 27 Plucky, 31 Banal, 32 Matching, 34 Astronomer, 37 Aft, 39 Calibre, 40 Jovial, 41 Relief, 42 Stag, 43 Palette, 46 Separately, 51 Endorse, 55 Ring, 56 Hamper, 57 Turban, 58 Headway, 60 Era, 62 Sweetheart, 63 Traverse, 64 Baton, 67 Stigma, 68 Forked, 69 Infuriate, 74 Repudiate, 75 Amber, 76 Mansion, 81 Onlooker, 82 Silver plate, 83 Cadet, 84 Scent, 85 Marching orders, 86 Jeans.
 DOWN: 2 Shovel, 3 Elect, 5 Real, 6 Coconut, 7 Depart, 8 Lead, 9 Truncate, 10 Search, 11 Dotted line, 12 Eyes, 13 Satisfy, 17 Brief, 18 Child's play, 22 Clear, 23 Scimitar, 25 Avarice, 26 Regalia, 28 Panama, 29 Silica, 30 Freeze, 33 Choke, 35 Rogue, 36 Brat, 38 True, 43 Pores, 44 Lingerie, 45 Enamel, 46 Supersonic, 47 Pure, 48 Rotated, 49 Tarzan, 50 Leave, 52 Need, 53 Old salt, 54 Shadow, 59 Stamped out, 61 Issue, 65 Skittish, 66 Rival, 67 Serious, 70 Needled, 71 Museum, 72 Embryo, 73 Modern, 77 Scare, 78 Flue, 79 Even, 80 Stir.

5x5

S		O		E
	A		E	
E		H		R
	E		V	
T		E		D

Insert the missing letters to complete ten words — five across the grid and five down. More than one solution may be possible.

R	A	S	P	S
A	T	T	I	C
K	O	A	L	A
E	N	T	E	R
D	E	E	D	S

UCOL Whanganui supporting pilot success in one-of-a-kind partnership



NZ International Commercial Pilot Academy

A partnership between UCOL I Te Pūkenga Whanganui and the New Zealand International Commercial Pilot Academy to offer ākonga (student) learning support has been so successful it is being extended for another year.

Coral Hanna, the Student Success Senior Manager for UCOL Whanganui says the collaboration is unique.

"This type of partnership is a first for UCOL. It's a really great example of local organisations teaming up for the benefit of ākonga."

There is currently a global pilot shortage, and it's forecasted there will need to be 252,000 new pilots by 2032. However, the training to become one isn't easy, with a high number of exams. "Some ākonga were struggling with exam pressure, so in May last year the pilot academy approached us to see if we could help build their study skills, including revision techniques and exam strategies."

"We had the capability and we were happy to collaborate, so by the very next month we had a service level agreement in

place." Hana Beck, the pilot academy's Deputy Chief Flying Instructor, says they're also pleased with the outcome. "This partnership has been extremely valuable. Aviation requires a lot of theory to be learned in a small amount of time, and it has been vital to allow our students to fine-tune their revision and exam techniques so they can achieve the best results."

With the partnership being extended, Hanna feels it is a testament to the Student Support Services team's knowledge and passion.

"UCOL is well known for the wrap-around support services we offer and this partnership shows how we can help other organisations."

We're excited to keep working with the pilot academy into the future."

WHAT'S ON IN THE COMMUNITY

Alcoholics Anonymous

Phone 0800 229 6757. If you have a drinking problem maybe we can help. AA Wanganui area meeting list: Sunday, St Johns Lutheran Church Hall, 51 Liverpool Street, Wanganui, 9am; Monday, Friendship Hall, Morris Street, Marton, 7.30pm; Tuesday, St Johns Lutheran Church Hall, 51 Liverpool Street, Wanganui, 12.30pm; Wednesday, St Luke's Church Hall, 34 Manuka Street, Castlecliff, 7.30pm; Thursday, St Johns Lutheran Church Hall, 51 Liverpool Street, Wanganui, 7.30pm; Al-Anon (family support) Thursday, Quaker Meeting House, 256 Wicksteed St, 7.30pm. Friday, Gonville Library meeting room, 12.30pm. Ph 0508 425 266.

Free Computer Course

The UCOL Free and Easy Computer course covers all Microsoft programmes: Excel, Word, Powerpoint, Publisher. The course is on Mondays and Tuesdays 9am to 11am and 5pm to 7pm. It is ideal for all levels. Add computing to your CV. Enquire now 0800 468 265.

Holi Day Celebration

Peat Park, 17 Peat Street, Sunday, March 24th, 11am to 2pm. Refreshments are available. All Welcome.

Jigsaw Exchange

As the last Saturday of March falls on Easter Saturday, the meeting for this month will be on the 23rd of March, usual time, between 10am and 11.30am at Central Baptist Church. Contact Jack, 343-1404 or 021-0277-5391 or email rega21@xtra.co.nz.

Repair Cafe Whanganui

Sunday, 24 March, 11am to 1pm. Get your clothes or soft toy mended by skilled volunteers and learn about fabric repairing at Gonville Community Room (behind Gonville Library), 44 Abbot St. Two items per person. Donation requested for successful repair. Enquiries whanganuirepaircafe@gmail.com or ph 06-344-1250.

Scout Jamboree Fundraiser (Australia)

Garage Sale, cake stall, B.B.Q. Scout Hall, Swiss Ave, Sunday 8-2. Also stalls available, \$15.00. Contact Tiffany 027-326-7851. Donated goods welcome from 4.30pm Saturday.

Theosophy Whanganui Public Meeting

Usually held 2nd Sunday Monthly. Where: Community Arts Centre, back river entrance in the Awa Room. When: 2pm What: Presentation with respectful discussion and communication. Purpose: No dogma, 'Do no harm', explore ancient wisdom to develop self with the universe. Email: theosophywhanganui@gmail.com

Twinkle Toes at St Paul's

Fridays from 10.00am to 11.00am at St Paul's in The City Hall, Cooks Street. Car park building and lift access. A fun music time for pre schoolers. Gold coin donation.

USA Whanganui Lecture

featuring Kiwi Archaeologist Gordon Jackman discussing how his work in the North Island helped inform New Zealand history. Josephite Retreat Centre from 10:00 on Monday 25th. Entry cost \$5.00

USA Open Day!

Come for afternoon tea, buy a raffle ticket, and chat to our group leaders about the fun we have learning together. Friday 22nd March, 2-4pm, St John Ambulance Community Hall, 25 Tawa Street, Gonville. Contact Angela 022-632-4638.

Wanganui Spiritual & Awareness Centre

Meetings 7pm Sundays, Quaker Meeting Rooms, 256 Wicksteed St. Local or visiting speakers or mediums sharing their spiritual gifts. Join our healing circle, take a raffle, stay for supper and chat. Everyone is welcome. Koha appreciated. See our Facebook page for details. Ph: 027-697-6308.

Whanganui Film Society

[Monday 25 March 7pm: Joint Security Area (Park Chan-Wook | South Korea | 2000 | M cert) An investigator probes the murder of two North Korean soldiers in the border zone in this intense political thriller, bringing director Park Chan-Wook to worldwide attention. Davis Theatre, Watt St. Members only. Join at nzfilmsociety.org.nz/whanganui.html

What's On Notices

What's On in the Community notices are \$10 for up to 50 words. Contact River City Press, by Tuesday 1pm to place your advertisement.

Recent Bereavements



Sadly passed away recently...

Beverly Roberta (Bev) (formerly Clark, nee Chambers) FERN, on 12 March 2024, aged 88 years.

Zita Lillian (nee White) FENERTY, on 12 March 2024, aged 91 years.

Diane Barbara (nee Willis) LOVERIDGE, on 14 March 2024, aged 64 years.

John Mate-Huirua McLEOD, on 15 March 2024, aged 81 years.

David John MILTON, on 10 March 2024, aged 70 years.

Mereana Teruhi PIRERE, on 15 March 2024, aged 75 years.

Marjorie Doreen ROBERTS, on 12 March 2024, aged 88 years.

Geoffrey David SNOW, on 12 March 2024, aged 65 years.

Arthur John Pohe TAKIARI, on 15 March 2024, aged 60 years.

Beverly Anne (nee Watson) TASKER, on 16 March 2024, aged 81 years.

Jeanette Rae Marie TAYLOR, on 11 March 2024, aged 72 years.

John Grant (Grant/Hippie) TREADWELL, on 14 March 2024, aged 56 years.

Shirley WILLS, on 14 March 2024, aged 82 years.

Copyright:

River City Press produces and/or publishes advertisements strictly on the basis that River City Press is entitled to and owns the copyright in the advertisement so far as the copyright relates to publication or reproduction for publication in any newspaper, magazine or similar periodical or to broadcasting of the advertisement.

DEMPSEY & FORREST

FUNERAL DIRECTORS

Arrange a visit today and meet our friendly team. We are here to help you in your time of need. 208 Guyton St Phone 06 349 0202 any time www.dempseyandforrest.co.nz

Anderson Memorials

Your loving memories set in stone ← 100 YEARS →
1914-2014

HEADSTONES

Family owned for since 1914

For all monumental work in all cemeteries. Check out our website below

462 Somme Parade, Whanganui - opposite the cemetery Tel (06) 343 8708, Email: info@anderson-memorials.co.nz Showrooms in Feilding & Palmerston North www.anderson-memorials.co.nz

Cleveland Funeral Home

(06) 345 5522

Pre-Planning Call or Visit For Your Free Pre-Planning Pack

179 Ingestre Street | clevelandfunerals.co.nz

All Kiwis deserve a great meal. But only Whanganui has Jamie's Angels.

Perfect, personalised meals on a plate. Delivered daily throughout Whanganui. Call today to find out more.

Freephone: 0800 526 435

JAMIE'S ANGELS

Freshly Cooked Meals For The Elderly

Email: jamiesangelsnz@gmail.com W: jamiesangels.co.nz

-: ACC registered Vendor :-

TRADES AND SERVICES

Don't put off puppy vaccinations as parvovirus cases surge

Source: NZ Veterinary Association

As veterinarians report seeing a significant increase in the number of parvovirus cases, the New Zealand Veterinary Association Te Pae Kīrehe (NZVA) is calling on puppy owners to prioritise essential vaccinations to prevent heartbreak.

"It is important that new puppy owners factor in the cost for the course of vaccinations when they purchase or acquire a puppy," says NZVA Head of Veterinary Services - Companion Animal, Sally

Cory. "Vaccination is a highly effective way of avoiding parvovirus and the associated costs are far less than managing a very unwell puppy."

Sally, who also works as an emergency vet at the Wellington After Hours Veterinary Clinic, says her team is currently seeing cases of parvovirus on a daily basis, some of which have resulted in death.

"There is definitely a significant amount of parvovirus around at the moment...it's been one of the worst I've seen in 20 years with many people struggling to prioritise the cost of their pet's vaccinations," she says. "Unfortunately, parvovirus is catching people out and instead they're having to pay for intensive treatment or having to make tough calls about putting their animal to sleep, if the dog is very unwell."

Parvovirus is a highly contagious viral disease affecting the dog's gastrointestinal tract.

Those most at risk are

young (six weeks to six months), unvaccinated, or incompletely vaccinated puppies. Parvovirus can be passed on when dogs sniff, lick or eat contaminated faeces, or through encountering food and water bowls, or footwear that contains the virus. The signs of parvovirus usually occur within five to seven days of exposure and may include lethargy, lack of appetite and fever that then progresses to vomiting and bloody diarrhoea. The disease can progress quickly, and severe disease often results in death.

Sally says parvovirus has always been prevalent in some urban areas. This year, cases appear to be on the rise, especially in Wellington, Auckland, and Christchurch. "We understand finances are tight and it's hard to prioritise vaccinations when you have a happy, bouncy puppy in front of you," Sally says. "However, we urge new puppy owners not to delay vaccinations or assume they'll be okay. It's heartbreaking when we see people bring their puppies in for emergency treatment when we know the illness is preventable."

When purchasing a puppy, be certain you know if vaccinations have been started or not and when the next booster is due. If you are advised they have had their vaccinations, then you should receive a vaccine certificate booklet with confirmation. If you have no proof that vaccinations have been administered, then always assume the puppy has not been vaccinated and discuss this with your veterinarian.

At the same time as preventing the risk of parvovirus, owners should not forget that it is extremely important puppies are well-socialised between the ages of three weeks and 12-16 weeks. To help socialise puppies before they have completed their vaccinations, the NZVA encourages owners to enrol their pet in puppy classes, and check out the Puppy Socialisation Bingo chart from Fear Free Pets for more ideas.

If adult dogs received their full puppy vaccination programme, they should receive their first parvo booster at 12 months, and then every three years, Sally says.

Reduce the risks of your puppy contracting parvovirus

- Get them vaccinated by a veterinarian. Parvovirus is highly preventable with the right vaccinations.

- Keep them away from unvaccinated dogs and public areas where dogs commonly walk.

- Keep them restricted to properties with no history of parvovirus as the disease can survive in affected areas for years.

- Make sure no one is bringing potentially contaminated material on to your property (remember to 'clean the poo from the shoe!')

- The incidence of parvovirus varies between locations. Talk to your veterinarian about the local parvovirus risk, and an appropriate vaccination and socialisation programme for your puppy.

For more information about accessing emergency veterinary care, visit nzva.org.nz/emergencycare

100% locally owned



Dave Hoskin
CARRIERS LTD

Furniture removals door to door
National and international

390 Heads Rd. P.O. Box 5042 Wanganui
Phone: 06 344 7002 Email: darrell@hoskincarriers.co.nz

KEENE BUILDS
Reuben Keene Qualified Builder



fb @keenebuildswanganui
0204 190 4693 reuben.renouf@gmail.com



MONKEY BUSINESS
Tree Care

Eddie White
ARBORIST
mbtreecarenz@gmail.com
027 385 6597
www.monkeybusinessnz.com

OUR SERVICES

- pruning
- tree removal
- hedge trimming
- reductions
- storm damage maintenance
- planting

Get in touch for a FREE quote!

Len de Painter

INTERIOR
EXTERIOR
WASTERBLASTING
FREE QUOTES

Len Sheath
Ph 022 049 8502

AVAILABLE NOW

REAL ESTATE

Time to Sell?

- FREE market appraisal
- FREE marketing package
- No up front costs

Effective, Efficient Marketing of your property = SOLD

Call Marion Farr today to discuss your real estate needs.
Email: marionfarr@xtra.co.nz

Please call **Marion Farr** on 021 572 033



THE WATSONS
ROSS WATSON REAL ESTATE MREINZ
Licenced under the Real Estate Act 2008

RELIGIOUS SERVICES

UNITED SOVEREIGNS
corner Puriri and Harper Streets
SUNDAYS, 5pm to 6pm

United Sovereigns preach end times Revelation.
We preach truth and our obligation to God in these end times.
Everyone welcome.



KineticElectrical®
smarter

UNDER NEW OWNERSHIP/MANAGEMENT

RESIDENTIAL
Heat pumps / aircon
Security camera systems
Internet solutions and data cabling
Rewires and renovations
Electrical inspections (including caravans)

INDUSTRIAL & COMMERCIAL

m: 027 244 9307
p: 06 345 5552 Whanganui
e: whanganui@kinetic-electric.co.nz
www.kinetic-electric.co.nz

Taupō
Whanganui
Palmerston North
South Taranaki



Elevate Tree Service

- Tree felling
- Tree removals
- Pruning
- Digger Services
- Log Slabbing
- Chipping

022 355 4894
david.beatson@hotmail.com

vega

Get Your Best Mortgage Here

Natalie Sara
Residential & Commercial
Mortgage Adviser

022 164 1566
natalie@vegaland.co.nz
www.vegaland.co.nz



RCP - Positive news stories welcomed

LAWNMOWING + GARDENING

LAWNMOWING, section tidy ups, pruning, WINZ quotes. Tel-Tx 06-344-2535/021-0899-2345.

LAWN MOWING

LAWNS NEED MOWING?
Cutting Edge Lawns

Keeping Lawns & Costs Down!

- Locally owned & operated
- Pensioner discounts
- WINZ Quotes
- Ride on work

Wayne Bishop
Phone 027 555 3074

PSYCHIC CONSULTANT

I am available to help with your past, present and future as well as important decisions. Sandra Singleton. Numerologist Wanganui. 06-345-3803.

AFFORDABLE LAWMOWING

Great quality service, great price.
Pensioner rates available.
Call Paul on 021 245 4999

SITUATIONS VACANT

GET paid to exercise! Pamphlet Distribution require reliable runners to deliver RCP and brochures each week. Phone Bubs on 343-2010 or 027-218-2010.

REVIEWS: Latest Books in the District Library

Shape of a Boy: family life lessons in far-flung places - Kate Wickers
An inspirational parenting travel memoir from a travel journalist and mother of three, as she and her family cross the globe in search of adventure. This is a must-read for every wannabe traveller grounded by lockdown and for every parent who has dreaded travelling with a baby.

Real Life Recipes: fantastic fuss-free food - Tom Kerridge
The ultimate cookbook for simple everyday recipes that fit your needs and won't break the bank.

Birnam Wood - Eleanor Catton
A gripping thriller from the Booker Prize-winning author of The Luminaries, Birnam Wood is Shakespearean in its wit, drama and immersion in character. A brilliantly constructed tale of intentions, actions and consequences; it is an unflinching examination of the human impulse to ensure our own survival.

Someone Else's Shoes - Jojo Moyes
Nisha and Sam are two very different women. Nisha lives the globetrotting life of the seriously wealthy until her husband inexplicably cuts her off en-



tirely. She doesn't even have the shoes, she was, until a moment ago, standing in.

These books are available at all good bookstores and of course, Whanganui District Library.

NEED HELP?

Emergency.....111

City Mission/Foodbank345 2139

Women's Refuge Wanganui 344 2204



CLASSIFIEDS

52 Ingestre St Ph 345 3666

Email: rivercitypress@xtra.co.nz

Nominate someone you think is deserving of our **Bouquet of the Week!**



Email or facebook message us with your nomination and reason why they deserve to win!

email: rivercitypress@xtra.co.nz
facebook: River City Press Wanganui



PUBLIC NOTICES / ENTERTAINMENT

BUYING and SELLING USED FURNITURE



Phone 345 3154
54 Maria Place Extn
Email: ginza2@xtra.co.nz

FIREWOOD FOR SALE

AFFORDABLE firewood starting from \$50 a cubic metre for sale. Please phone us on (06) 343-8466.

WEBSITE DESIGN

GET a stunning, contemporary website at minimum cost, or give your old one a strategic revamp. Phone Peter on 020-4161-3506 or email peter@toucan.media.

WORK WANTED

HOME maintenance and shifting. House clean-up, gardening, water-blasting, spout cleaning, de-cluttering. Ph Ray 027-2807015.

MOBILITY scooters. Sales, service, repair, rental wheelchairs, walkers, ramps. Call Graeme 021-1195118 or (06) 347-6927.

PAINTER and Plasterer, professional, efficient and experienced. No job is too small. Reference available. Call or text 022-035-0175.

GARDENER WANTED

EXPERIENCED gardener wanted for Wanganui East house section. General weeding, tidying and garden maintenance. Weekly 1.5 hours. Phone 027-272-2860. WINZ quote needed.

Chamber Music Whanganui presents

LIAM WOODING

SOLO PIANO



MUSIC BY SHOSTAKOVICH, CHOPIN, BEETHOVEN & JENNY MCLEOD

Wednesday March 27th
7.30pm

CONCERT CHAMBER WHANGANUI WAR MEMORIAL CENTRE

Tickets available in advance from the RWOH Box Office or at the door (cash only no eftpos)
Adults 40.00, Seniors 35.00, CMW subscribers 25.00, Students 5.00

This concert is kindly sponsored by Mr Donald Trott

WANTED TO BUY

DRUM set rescue. Buying old, tired drum sets and parts for building usable sets for beginners. Call or message Grant. 021-447-481.

GINZA. Always buying, always selling. Good used furniture, antiques, China and collectables. Call Ginza 345-3154

RANGES + dishwashers in reasonable condition etc. Can pick up. Please Ph: 344-7503 or 021-0823-6126.

WANGANUI EAST CLUB

MEMBERS' DRAWS

MUST GO!

SATURDAY 23 MARCH

\$1200 - 6.30pm

\$400 - 7.30pm

101 Wakefield Street, Wanganui East
Phone 06 343 7023

Members, affiliated members and guest welcome.



Alzheimers Whanganui Incorporated ANNUAL GENERAL MEETING

Tuesday 26 March—5.30pm

Christ Church Anglican Church
243 Wicksteed Street, Wanganui
To be held in the Lower Lounge

ALL WELCOME

For further information
Please phone (06) 345 8833
or email
admin@alzheimerswhanganui.org.nz

SECTION 101 SALE AND SUPPLY OF ALCOHOL ACT 2012

Gagan & Vikaus Enterprises Limited, 99A Guyton Street, Whanganui has made an application to the District Licensing Committee at Whanganui for a renewal of an On Licence in respect to the premises situated at 99A Guyton Street, Whanganui and known as **The Grand Hotel**.

The general nature of the business conducted under the licence is a tavern.

The days on which and the hours during which alcohol is sold under the licence are **Monday to Sunday, 8.00am to 2.00am the following day**.

The application may be inspected during ordinary office hours at the office of the Whanganui District Licensing Committee at 101 Guyton Street, Whanganui.

Any person who is entitled to object and who wishes to object to the issue of the licence may, not later than 25 working days after the first date of the publication of this notice, file a notice in writing of the objection with the Secretary of the District Licensing Committee at DLAdministration@whanganui.govt.nz.

No objection to the issue of a license may be made in relation to a matter other than a matter specified in section 131 of the Sale and Supply of Alcohol Act 2012.

This is the second publication of this notice.

The first notice was published on March 14, 2024.

HEALTH & BEAUTY

JADE Traditional Thai Massage. Excellent massage at reasonable prices. 64 Guyton Street. Phone 348-8466 for an appointment.

JAX ensomme Qualified stylists offering professional hair-dressing and gold card services. Book online or call (06) 343-1225.

BRIDGE LESSONS

Whanganui Bridge Club

Commencing **THURSDAY 18 APRIL**
at 7pm - 9pm

Parsons Street Club Rooms
12 week course \$60
(includes Acol Bridge Book)
plus playing practice nights

To enrol or inquiries please contact:
John Dodds - 343 1628
jwdodds46278@gmail.com

Sherry Pedley - 0274 992 210
sherrywayne@xtra.co.nz

WANTED

ANY Cars Wanted Dead or Alive



TOP CASH PAID

\$100 - \$1,000
for small car

\$100 - \$7,000
for 4x4 UTEs

Vans, 4WD,

Trucks, Buses

Ph Today **021 032 3006**

Text: **022 535 0807**

We will beat any prices in the market by 10%



U3A Whanganui Incorporated

The first of our Autumn Lecture series will be held at the Josephite Retreat Centre from 10.00am on **Monday 25th March**.

In this presentation **Kiwi Archaeologist Gordon Jackman** will discuss how his diggings in the North Island helped inform the history of New Zealand.

Entry cost of \$5.00

FRUIT & PRODUCE

FRESH vegetables available, open Thursdays, Fridays. Laugeson's Gardens, Westmere Road.

PERSONAL

FREE confidential health checks, STI and HIV screening. Whanganui Hospital. Phone for consultation 348-1775/021-323-077.

Connecting COMMUNITIES

Local people

Local news

Local opinions

Local ownership

Your community newspaper, part of the independent community newspaper network.



www.cna.org.nz



John Taylor

Taylormade Plastering

Big thank you to
W & W Construction
and the
St Johns Club
for supporting local
businesses

j.s.taylormade10@gmail.com
022 490 2671

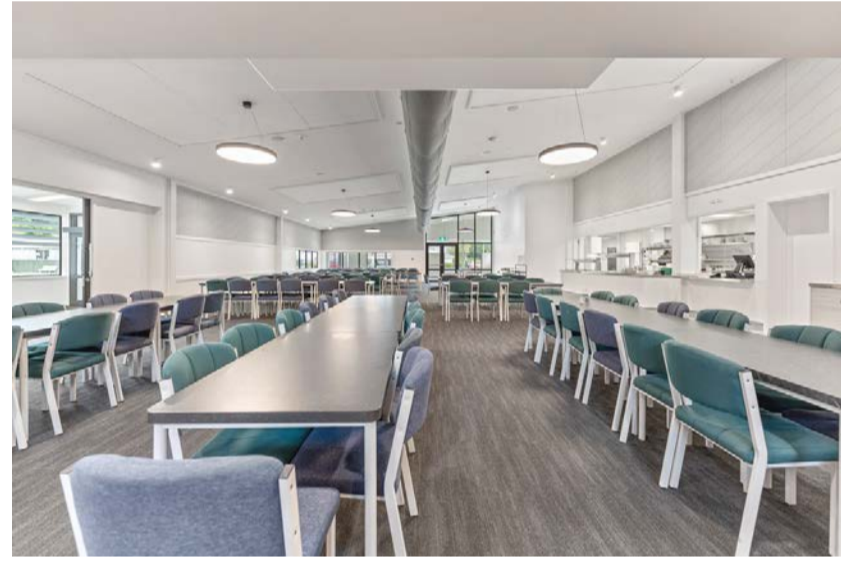


The servery area at Elms Restaurant at the St Johns Club.

St Johns Club modernised



The new entrance leading into the St Johns Club from Wicksteed St.



The newly renovated Elms Restaurant at St Johns Club can cater for up to 150 diners.



The new commercial kitchen.



The carpark at St Johns Club capable for up to 80 vehicles.

Expert inspections and advisory services start with an experienced team.

Property Brokers Compliance is at the leading edge of Compliance throughout the lower North Island. We strive to be industry leaders, further expanding on 30 years of professional experience in our field. We provide the following services: IQP inspections, Fire alarm installation and remedial work, Building Warrant of Fitness documentation and 12A certificates, Sprinkler and fire alarm testing, Fire fighting equipment inspections, 24/7 call-out service, Evacuation scheme development and Provision of new fire extinguishers.

Property Brokers Compliance is proud to support the St Johns Club renovations



0800 2 COMPLY (0800 226 675)
compliance@pb.co.nz
2COMPLY.CO.NZ

EDMONDS PAINTING

Waterproofing | Plastering | Specialist Coatings

Proud to have been involved with the
ST JOHNS CLUB UPGRADE

127A London St Wanganui

06 3488077 / 0276311608

www.edmondspainting.co.nz



ELITE
MECHANICAL & ENGINEERING SERVICES LTD
"Your One Stop Engineering Shop"

Elite Mechanical and Engineering Services cuts a fine figure in Wanganui trade circles

- Jobbing Work
- Installation of Machinery
- Factory & Field Maintenance
- Designer/AutoDesk Inventor
- Machining & Fabrication
- ASMI Certified Welders
- Preventative Maintenance
- Full Sheetmetal Workshop
- Structural Steel
- 250 ton Press Break Service
- Food Processing Machinery
- Conveyor Systems
- Waterjet Cutting
- Stainless Steel Specialists
- Aluminium Fabricators & Welders
- 1x3, 3x5 & 1x10 ton Gantry Cranes

No Job is too big or too small

Call us on 06 344 4108 or drop into ELITE at
437 Heads Road, Wanganui
enquiries@eliteengineering.co.nz
www.eliteengineering.co.nz



ST JOHNS *Club* REDEVELOPMENT

158 GLASGOW ST

PHONE 348 0082

www.stjohnsclub.co.nz

Final stage of redevelopment of St Johns Club finished



St Johns Club Complex

St Johns Club in Glasgow/Wicksteed Streets has completed its final stage of a three-stage redevelopment project and is looking good and inviting. A short, formal opening will take place this Saturday with the cutting of the ribbon, to be performed by a 102 year old member.

Stage one was completed back in 2017 and included everything from the bar, lunch and TV areas, and upstairs with another separate function room plus the pool/billiard area. This has made it possible for the Club to host up to 500 people, including 100 for the upstairs function room.

Stage two included putting in a stage and the new toilets.

Stage three, started in March 2023 and completed this month, involved a new kitchen and Elms restaurant, capable of hosting up to 150 people, a new entrance way coming off Wicksteed Street, and a considerably enlarged car park.

The restaurant is very

popular with evening meals provided Wednesday to Sunday from 5.30pm to 8.30pm. Manager Denis Dorgan says, "We have introduced a new menu with very reasonable prices, with most items less than \$30." This is supported by a range of cabinet food from the bar area as well as being able to purchase hot chips.

The parking area is extensive, capable of up to 80 vehicles. It is right outside the new impressive looking entrance, making it convenient to

have safe, off-street parking close to the restaurant. It is also convenient for the Courtesy Coach as well as for deliveries.

Apart from small projects such as redoing the outside decking and the inevitable repairs and updates, this project completes the refurbishment of the Club.

The Club offers a range of adjuncts, including those for golf, outdoor and indoor bowls, 8 Ball, fishing, pigeon racing (they don't fly in or out of the club), seniors,

punters, snooker, dancing and darts.

Membership has grown to around 3,000. Royce Tunbridge, who has been the elected president for the past 16 years, says, "Thursday and Friday nights are especially well supported, helped by raffles and club draws. Every Saturday, we have live entertainment."

A number of outside organisations also use the Club for their meetings, such as the two Rotary Clubs, the Jazz Club, and the line dancing group.



President Royce Tunbridge at the new entrance ready to welcome people to the club.

LOADERS

CIVIL

www.loaders.co.nz

Proudly Supporting our Community

Proud to have been involved with the St Johns Club Upgrade.

ACTION DRAINAGE

Residential & Commercial

- Asbestos Removal
- Roofing • Groundworks
- Drainage • Plumbing

27 Heads Road
Wanganui
06 345 5891 (24 hours)
www.actiondrainage.co.nz

SEL

Strong Electrical Limited

Proud to carry out the electrical installation for this project.

For all your air conditioning needs ring for a free quote

Ph 348 0033

Email: admin@strongelectrical.co.nz

STEELFORM

Wanganui Steelformers Ltd

← COLORSTEEL. Zincalume®

Proud to be part of the
ST JOHNS CLUB UPGRADE

380 Heads Road, Wanganui
Ph 344 5142, 344 4159 or 0800 800 077

W&W CONSTRUCTION

2010 LIMITED

Proud to be the main contractor for the
St Johns Club Upgrade
Thank you to the Client, Consultants,
Sub-contractors & Suppliers

ph 06 344 5153 fax 06 344 5110
376 Heads Road, PO Box 844, Wanganui 4540

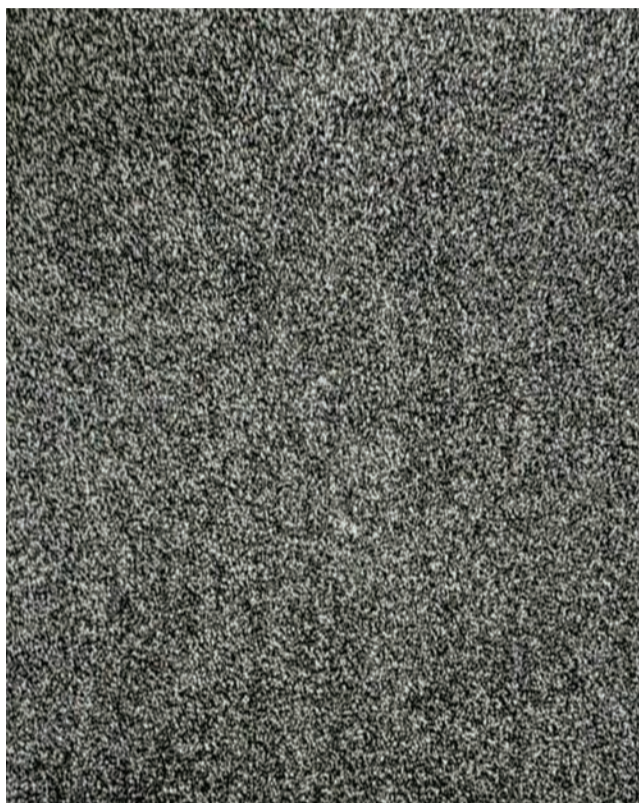
admin@wwconstruction.co.nz

NEW

Simplicity

A cost effective 40oz solution dyed Polypropylene

\$109.00
Per lineal metre



GREAT RANGE OF STOCK VINYL



2m Wide - \$68 lineal mtr 3m Wide - \$102 lineal mtr



FLOORING XTRA

Hobday & Lorentzen Flooring Xtra
31 Wilson Street, WANGANUI. PH 06 345 5405