



52 Ingestre Street, Whanganui. Phone 345 3666 or 345 3655, email rivercitypress@xtra.co.nz

# Colleen Redit is an unsung Whanganui hero

BY DOUG DAVIDSON

In 1964 a 24-year-old Whanganui woman, Colleen Redit, sailed to India with a passion to help the poorest of the poor in Chennai, formally known as Madras in the southeast coast of India.

Today, Colleen is 85 and oversees a huge operation covering schooling, an orphanage, a hospital, support for two leprosy colonies and HIV patients, as well as building of 140 houses destroyed in a tsunami in 2004. The work called Christian Missions Charitable Trust (CMCT) has a staff of 320 and an annual budget of \$2.8m (NZ\$), 90% of which is interna-

In the short term, the CEO of CMCT will be visiting Whanganui in late April and will speak at a fundraising dinner on Saturday, 27 April.

Colleen was the eldest of four children. She went to Tawhero School and then Whanganui Girl's College and attended the Gonville Gospel Hall in Puriri Street (it is now the Whanganui Cook Island Christian Church).

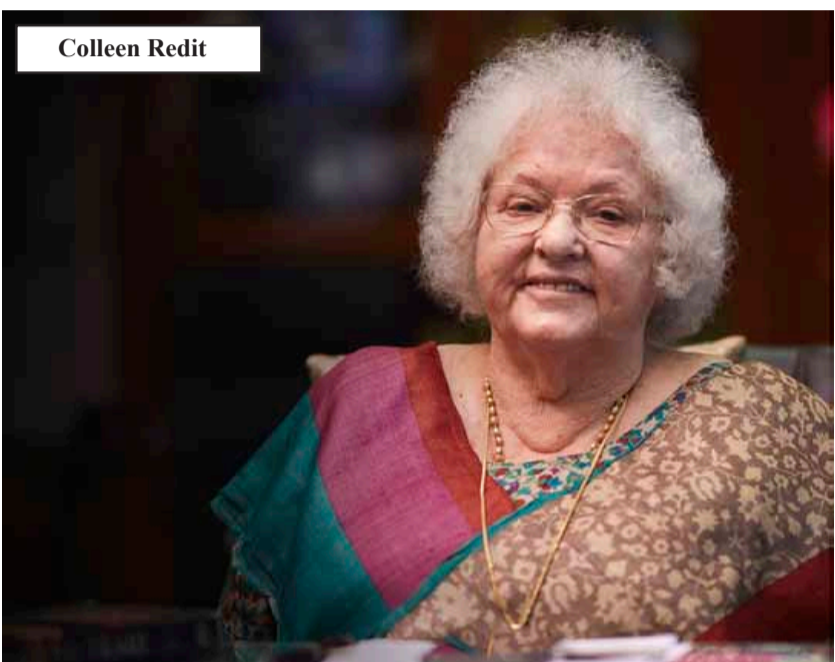
Baden was able to give us information about Colleen's Whanganui background. In her second year at Girls' College, Colleen's mother, Mavis, decided she should leave school and start work. So Colleen became a teacher assistant at a Castlecliff kindergarten, but "She

said she was not happy there and had no peace."

She learnt typing at night school, taught in three Sunday Schools, was a Girls' Rally leader and joined the Red Cross, completing a one year training period. "But she was determined to further her studies and asked the College principal if she could return to school."

After school she trained as a kindergarten teacher in Auckland but also "worked as a nurse aid at a TB sanatorium from 7am to 4pm to save money for her hostel fees, and on Saturdays she cleaned homes for extra pocket money."

Back in Whanganui, Colleen was assistant director of Central Kinder-



garten for one year and Director of Durie Hill Kindergarten for another year. But the call to help the poor after attending mission meetings led her to act on what she believed was "a strong call from God to go to India." When Colleen arrived

in Chennai, she spent the first two years learning the local Tamil language. As Baden says, "Her strategy was simple. She began by teaching one young woman to read and write. Then two, three and so on."

"The people she most wanted to help came from

extreme poverty, living in houses made with whatever could be found, crowded together, usually next to a putrid river and often right next to more affluent parts of the city."

Continued on page 2

**WANGANUI BEDROOM Specialists**  
**OPEN 7 DAYS**  
 Locally owned & operated  
 151 St Hill Street, Wanganui  
 Phone 06 345 6084

**NEXT WEEK'S RCP PAPER DELIVERY**  
 Please note: with Anzac Day falling on a Thursday this year, couriers will not be operating. This means RCP will not arrive in Whanganui for delivery until Friday, April 26 next week. We apologise for any inconvenience

**Deb Hipango**  
 Licensed Salesperson REAA 2008  
 022 3400 877  
 deb.hipango@pb.co.nz  
 Buying or selling?  
 There's only one agent to call, it's Deborah Hipango. Experienced and Trusted

**WHANGANUI Ballet & DANCE ACADEMY PRESENTS**  
**A LITTLE PRINCESS**  
 A BALLET FOR CHILDREN  
 AT THE ROYAL WHANGANUI OPERA HOUSE  
 APRIL 2024  
 Saturday 20th 5.00pm  
 Sunday 21st 2.00pm  
 Advert sponsored by American Nails

**LAZBOY**  
**Cosy Autumn Sale**  
 RECLINERS now starting at \$999\*  
**STOREWIDE SAVINGS ON NOW!** T&Cs apply

**100% HOME DIMOCKS**  
 190 VICTORIA AVE WHANGANUI PH 06 348 4877 www.100percent.co.nz  
**OPEN 7 DAYS**

**ENROL NOW**

We have courses in:

- Animal Care
- Rural Animal Technician
- Carpentry Level 3
- Agriculture Level 3 - Dairy

**AGC TRAINING FOR INDUSTRY**  
 CHALLENGE YOUR FUTURE | WHAKAAEHA TO WERO  
 Call 0800-348 8215 www.agctraining.co.nz

## Check out what's in this week's RCP

Next week, we commemorate Anzac Day with the Dawn Service starting at the slightly later time of 7am. Check out pages 14-19 to read our local AN-ZAC stories and info on what's happening on the day.

We may be moving ever closer to winter, but events that support our community and beyond still going strong. The front-page story speaks to local lady Colleen Redit's commitment to generosity beyond our shores. The work continues, and local Baden Brown takes up the mantle to raise money for this worthy cause with an epic bike ride. All the best for your journey, Baden.



**Doug Davidson**  
journalist@rivercitypress.co.nz

such event is Hospice Hero Day which provides a fun way to raise money for our local hospice. Check out page 12 for the details. It will be fun to see the Hero costumes on the day!

Closer to home, one

## Kerbside recycling coming to Whanganui this July

Whanganui District Council has confirmed Low Cost Bins as the contractor for a new kerbside recycling service in Whanganui – with the service to begin in July 2024, covering not only Whanganui but also larger rural settlements such as Mowhanau, Fordell, and Marybank.

Whanganui Mayor, Andrew Tripe, says “The service will be funded by a targeted rate applied to households in the service area, supplemented by ongoing subsidies from the Ministry of the Environment’s Waste Levy.”

Prior to the launch of the service, households will receive a set of three crates which can each be used to recycle either paper and cardboard, plastics and cans, or glass bottles and jars.

Council’s community property and places general manager, Sarah O’Hagan, says the decision to use a crate-based system, rather than wheely-bins, is based on evidence that crates are less prone to contamination – which has been a major issue for bin-based recycling services across New Zealand.

“The big advantage of crates is that our contractors will clearly see the contents of them when they collect the recyclables – meaning they can quickly identify contamination. Recycling is hugely important, but only impactful when done properly.”

Low Cost Bins Limited chief operating officer, Andrew Sclater, says another

important element of the new service is its potential to stimulate local employment, thanks in part to the adoption of a crate-based recycling system.

“As well as reducing contamination and improving the quality of recyclables, the crate-based system will provide local job opportunities – with materials being collected and sorted by hand in Whanganui (rather than heading to a mechanical sort line in another region).”

The Whanganui Resource Recovery Centre will continue to operate to ensure that rural households that aren't included in the kerbside recycling service still have a recycling facility available – and for people to have the ability to recycle certain materials that aren't accepted at kerbside.

Given that most Whanganui residents will be able to recycle materials at kerbside there will be some changes at the centre. The centre will be working through what the changes mean for operations, including future waste minimisation opportunities for our community.

Whanganui District Council will provide detailed information about the new services, including guidelines on correct recycling practices using the crate system, in the coming months.

Low Cost Bins will also partner with council to deliver a kerbside food scraps collection service



to urban households in Whanganui, starting from July 2025.

For more information and updates on the kerbside recycling and food

scraps collection services, visit whanganui.govt.nz/recycling.

## Palestine Solidarity Network Aotearoa promoting petition to Council

The Whanganui Palestine Solidarity Network Aotearoa (PSNA) has been drawing attention in a variety of ways to the catastrophic events unfolding in Gaza and Israel for over six months. While it might feel as though this conflict is a world away, the impact of what is happening can be felt across the world, including by Palestinian and Israeli families in Whanganui.

The Whanganui PSNA believes that a community that advocates for international law and human rights is a safer community for all. So, they created a petition and a motion asking for an immediate and permanent ceasefire in Gaza, which will be presented to council on May 7th.

They point out a precedent. In 2022, district councillors voted unanimously for a motion to stand by the people of Ukraine. With this petition, PSNZ is asking the District Council to act as before for the civilians on all sides. Renata Szarvas who is helping collect signatures says, “We want it on record in our district council's archives that Whanganui stood on the right side of history with an unwavering voice, as it did back in 2022.”

She adds, “Standing on the street with the petition over the past few days, I learned how deeply people in our town care.”

The Whanganui PSNA's position is that “This petition provides a chance for people to know that in some small way they were a part of calling for an end to the hostilities. With a permanent ceasefire, the UN and humanitarian aid agencies will have unhindered access to Gaza and the international community can begin to facilitate meaningful negotiations, and legal justice for all war crimes committed. We are doing this for us and future generations.”

Similar petitions are being carried out in a variety of towns and cities across New Zealand.



Marion Davidson signing the petition with Renata on the right.



- ❖ Supply, installation, servicing & repairs of all types and brands of heat pumps.
- ❖ All commercial and residential electrical work: Board rewires, lighting, repair and installation of any of your electrical needs.
- ❖ Vehicle air conditioning re-gas available
- ❖ Registered Electrician

Phone 027 565 6734 ❖ email: rtheatpumps@gmail.com



**New eBikes in stock and also eBikes available to hire!**

Stockists of:



73 Putiki Drive, Wanganui | 06 348 8008  
www.ebikeswanganui.co.nz  
info@ebikeswanganui.co.nz

# Stone Soup celebrates the redevelopment of Lorenzdale Park

Lorenzdale Park in Gonville has undergone a huge transformation in the past few years. These were celebrated by a community function and lunch at the

Park on Saturday, 13 April and there was considerable praise for "this amazing facility."

There has been the placement of exercise machines in a semi-

circle as well as a covered area for BBQs. A half basketball court has been installed with the community being asked to come up with a design for the court.

Jodie Brunger from Sport Whanganui said, "The winning design was able to be used with minimal changes and was painted by local artist Mike Marsh, who also painted the basketball at the Castlecliff Beach Domain." Flatline provided the paint, The Whanganui Rotary Club donated \$2000 and grants were received from groups such as Creative Communities.

"A similar half basketball court will be installed in the Williams Domain," advises Jodie, "and Whanganui Basketball Association will again provide the hoops. It is part of the 'Art to the Park' programme, where art and sport

come together.

Another development is a replacement and modern playground area.

These developments have involved a range of agencies, including the district council, Horizons, Ministry of Internal Affairs, the Whanganui Community Foundation and Sport Whanganui. However, the key agency has been Stone Soup.

Greg Tichborn, one of the founders of Stone Soup 17 years ago, and described as "a champion and facilitator" for the group spoke of their motivation. "We wanted to build community where people knew each other." He gave an

example of if he gets cut off when driving, an immediate reaction is to abuse the other driver, "but if that person is someone I know, I'm likely to relax and be friendly."

Stone Soup has a lunch gathering for the neighbourhood every eight weeks – an opportunity to get to know and support each other. Lorenzdale Park he said has become the central point of Gonville. While he thanked all the groups who have helped, he said the progress has been due to "our people and what they wanted."

There were plenty of things to do with the Rapid Relief Team

providing free hamburgers, free slices of fruit being handed out and a wide range of services including the Hep C Caravan and Hauora Bus, Regional Stop Smoking tent, the District Library, and Te Whata Ora.

There were checks and advice available for everything from gout, hepatitis, flu and Covid vaccinations, children's immunisations, and Women's Smear Tests to HPV self-tests and bowel cancer tests.

Children were also entertained by making balloon figures.

The rain stayed away long enough for everyone to enjoy themselves.

## Colleen Redit is an unsung Whanganui hero



Baden and his motorcycle

Continued from page 1 She also taught the women skills that would generate income to support themselves, beginning "the process which was ultimately empowering women."

There was so much human need and Colleen responded by establishing an orphanage and opening up a school in a rented house. Today a purpose-built school educates up to 1400 students. This was made possible by child sponsorship, Bayden explains. "Today 1650 children are being sponsored for \$50 (NZ\$) per month, covering their education, uniforms, health requirements and a hot meal each day."

The next step was to build a hospital that cares for 150 patients a day, with those who can pay subsidising those who can't.

The tsunami resulting from the Indonesian earthquake of Boxing Day 2004 caused huge destruction on the east

coast of India and Sri Lanka. Colleen reached out to one of the villages, providing them with replacement boats and fishing nets. She then welcomed teams from New Zealand and Scotland to help rebuild the homes.

Baden was a team volunteer and says, "With the help of labourers from the village next door, we were able to complete about ten houses per trip – which amounted to 70,000 bricks in three weeks." This village continues to be supported by Colleen with child sponsorship, education, and medical care.

The fundraising dinner on Saturday April 27, starts at 6.30pm. It will be an authentic Indian dinner cooked by a professional Indian chef, and tickets have already sold out. It will be followed by an auction of donated goods.

Baden plans to travel by motorbike in the spring of 2025 from NZ to India, around the southern part of India and then across

to the UK. He will be speaking to people about the work of CMCT. He says, "Though I plan to self-fund the trip, I would appreciate any assistance towards motorcycle shipping, fuel, food and accommodation. Any help will be recognised on my video blog of the journey." Baden can be contacted at baden@ehaus.co.nz.



Part of the crowd on the basketball court.

**THOMPSON**  
PLUMBING & GAS LTD

Master Plumbers  
Representing Excellence

- General Maintenance Plumbing
- Hot Water Systems
- New Builds and Renovations
- Heating
- Programmed Maintenance
- Septic Tanks and Wastewater Systems
- Drainage and Unblocking
- Rain Water Tank Installation
- Gasfitting Service

06 345 0924  
office@thompsonplumbing.co.nz  
thompsonplumbing.co.nz

Find us on Facebook

**Gonville**  
**supervalue**  
just what you need

**THIS WEEK'S SPECIALS**

<p>Frozen Mutton Chops</p> <p>only <b>\$7.99</b> kg</p>	<p>\$15 Trays Diced Beef or Steak &amp; Kidney</p> <p>only <b>\$10.00</b> each</p>
---	--

**WILD WEEKEND SPECIAL**

only  
**\$16.99**  
kg

**Fresh NZ Rump Steak**

**Beef Neck Soup Bones only \$2.99kg**

**PRODUCE**

<p>Jazz Apples</p> <p>only <b>\$4.00</b> kg</p>	<p>Leeks</p> <p>only <b>\$2.00</b> each</p>
---	---

**NEXT WEEK'S SPECIALS - STARTING 22.4.24**

<p>Super Lean Premium Mince</p> <p>only <b>\$11.99</b> kg</p>	<p>\$20 Trays Crumbed Lamb Cutlets</p> <p>1/2 price only <b>\$10.00</b> each</p>
---	--

All items while stocks last (no rainchecks). Get in early.  
47 Abbot St, Gonville • Ph 06 344 3002 • 7am-8pm, 7 days  
www.wanganui.store.supervalue.co.nz

**SUMMIT**  
Electrical

Top Service • Top Workmanship • Top Electricians

- 24/7 Service
- FREE Quotes
- Member of HAZARDCO
- For all your electrical requirements

**Summit Electrical Services Ltd**

0800 2 SUMMIT  
0800 2 786 648  
Todd Cowan - 022 325 0056

Member  
**MASTER**  
ELECTRICIANS  
Electrical Contractors Association of NZ

**COLOURPRO**  
PAINTING

We paint so you don't have to

NO-OBLIGATION, FREE QUOTES INTERIOR & EXTERIOR PAINTING

Ph: 027 856 1779 | Email: colourpropainting21@gmail.com

**Ash Regan - Qualified Painter**

# Development of Kokohuia and Titoki wetlands in Castlecliff planned

# Combatting entropy with Jazz



Concept plan of wetlands

James Kaplan is an American writer whose latest book “3 Shades of Blue” documents the lives of three of jazz music’s geniuses who came together in 1959 to collaborate on what became jazz’s best selling record – Miles Davis’ Kind of Blue.

In his 2024 Prologue to the book, Kaplan says, “Jazz today, when it isn’t utterly ignored, is widely disliked ... because it is old, or anodyne, or hard to understand. Jazz is passe. Jazz is niche. Jazz is the smooth soundtrack to polite brunches... or it is just loudly squeaking and honking saxophones”.



Hadleigh and Joe

If that is the perception of this glorious music in the place where it was born, you can imagine what the Jazz community here in New Zealand is up against.

He goes on to protest “I speak of Jazz as an awesome thing. An imperative, an empire.”

More information about the draft master plan can be found at: [www.whanganui.govt.nz/healthy-streams](http://www.whanganui.govt.nz/healthy-streams)

international interest in this work under Te Awa Tupua legislation. Some funding is available for wetland improvement work in the council’s existing stormwater budgets.

More information about the draft master plan can be found at: [www.whanganui.govt.nz/healthy-streams](http://www.whanganui.govt.nz/healthy-streams)

## Copyright:

River City Press produces and/or publishes advertisements strictly on the basis that River City Press is entitled to and owns the copyright in the advertisement so far as the copyright relates to publication or reproduction for publication in any newspaper, magazine or similar periodical or to broadcasting of the advertisement.

Whanganui has an opportunity to lead the way globally with a Hapū-led approach to wetland development that not only benefits the environment but also supports cultural aspirations.

The Mokoia Catchment Rōpu (MCR) was formed at the end of last year to guide and support the development of the Kokohuia and Titoki wetlands in Castlecliff from both a cultural and community-focused perspective.

The master plan for the restoration of the wetlands is being guided by internationally recognised legislation, the Te Awa Tupua Settlement Act that gave the Whanganui River its own personhood and the act’s values – Tupua Te Kawa.

MCR representa-

tive Ken Mair says the wetland development is a significant opportunity internationally, nationally, and locally. However, the real opportunity was improvements to the health and wellbeing of the wetlands that would mean the return of tuna, īnanga and manu (eels, whitebait and other native freshwater species and birds) to the area.

Te Repo o Kokohuia, and the interconnected wetland system extending to the Titoki Street repo (swamp), is an area of great historical significance to Whanganui and Ngā Rauru Kīahi Iwi. It was once a thriving wetland that provided mahinga kai (plant, aquatic and native bird life) food gathering sites, resource materials (harakeke) and rongoā (medicinal plants) for whānau, marae and

hapū that traditionally lived there.

Much of the wetland has been destroyed and degraded, and connection to the awa cut off. Part of the area was also filled in when it became the Balgownie rubbish dump. The landfill closed in 2000, and final capping was completed in March 2001.

Hapū has been involved in a series of workshops and community meetings about the development of Kokohuia wetlands since 2013.

Te Kura o Kokohuia, located next to the repo, is also playing a significant role in restoration efforts, Ken Mair said.

The next steps for the wetland development project include re-engaging with the community and investigating public funding sources based on

local players, whatever their instruments. Everyone is welcome. Come down and enjoy the vibe, the company, the food and the drink.  
Sunday 21 April, 6pm – 8pm @ Porridge Watson, 30 Drews Ave, No Charge

**River City Press**  
the good news paper

Make your health a priority

VICTORIA DENTAL

Make an appointment today

06 345 3222

Victoria House

1a Rutland Street, Wanganui



SHANE STONE BUILDERS LTD

11AM-1PM  
185 LONDON ST  
(NEXT TO BP)

Member of SUNNINGS TRADE | CLEVER LIVING CO.

# ASK A PROFESSIONAL

## Winter is coming

As the days get shorter and the nights feel colder, it can be a little harder to get up in the mornings as aches and pains set in for us and our pets. Arthritis and muscle pain often flare up in cold, damp weather; usually we see it in older pets, but younger animals with developmental bone and joint problems are affected. Affected pets usually show difficulty getting up in the mornings, reluctance to exercise and becoming tired easily; sometimes they even become standoffish or aggressive towards humans or other animals.

To help your pet’s mobility, your vet can advise you on diet, supplements, exercises and even physical therapies such as physiotherapy, hydrotherapy, or acupuncture which can all help to alleviate pain and improve their quality of life; vets can also prescribe medications to help to control pain, and if appropriate, may recommend surgery.

If your pet is slowing down or you are concerned about their mobility, contact your veterinarian to discuss the best options for your pet.



WANGANUI VETERINARY SERVICES

35 Somme Pde, Wanganui, Ph. 349 0155

# A successful and busy term for Whanganui City College Annual Bird Show and sale this Saturday

As I write, my thoughts turn to the very busy first term we have had, and celebrate a great start to the 2024 year. Highlights for the term are many and I want to thank our whānau for their continued support of our/their tamariki/mokopuna.

We had our annual Recognitions Assembly on 23rd February, where we honoured those senior students who did well academically in 2023. It was great to see so many past students and whānau attend this hui. My congratulations to all for their hard work and effort. At the end of the assembly, we announced our Tuakana Leads (Heads of School) for 2024 and their Tuakana team. My congratulations to all these students, and we look forward to their leadership and guidance through a busy year ahead.

Heads of School - Rakeinohowhetu Hawira and Lucas Powell.  
Deputy Heads - Maiyah Ellison-Rogan and Wiremu Newton.

We had two groups attend the National Secondary School summer tournaments on the 18th-22nd of March. Our 3 vs 3 Basketball teams attended their tournament in Lower Hutt and did well. From all reports the teams played well and represented us well. My thanks to the coaches and staff involved. The other event we took part in was the secondary school Waka Ama Nationals at Lake Tikitapu, Rotorua. We had 34 students take part, and the teams did very well, with a couple of crews making the finals. Once again, a big thank you to our staff, coaches, and a big thank you to our students.

We had very successful Whānau Day Interviews held on the 15th March. These are set up by our Whānau teachers,



34 City College students took part in the Waka Ama Nationals

and they are a vital key in ensuring that academic goals etc. are set for the year for each student. The beauty of these hui is that all the main players are at the table: the student, their whānau, and the teacher. Goals are set and tracked by all involved and effective communication links between the school and home are set. At the heart of these interviews is our

very own document that tracks the student from day one till they leave. We call it our SWEET document (Student and Whānau Educational Engagement Tool), and have been using this document for a few years now. We had a great turnout of whānau with 81% meeting with their Tamariki/Mokopuna Whānau teacher. My thanks to our school

community for their support of our Kaupapa. To my staff and students, thank you very much for a great start to the year.  
Ngā mihi nui kia koutou.  
- Peter Kaua (Tumuaki/Principal)



Canaries

The Wanganui Bird Club is holding its annual Bird Show and Sale this Saturday, 20 April. It will be at the Whanganui Girls College Hall from 9am to 3pm. There is a gold coin entry charge for adults, with children having free entry.

Bird lovers from associated clubs from Hamilton, New Plymouth, Palmerston North, Masterton and Levin will join their Whanganui colleagues in displaying and selling

birds. There will be about 350 birds there, including budgies, cockatiels, Love Birds (always popular), and Canaries (at least eight different varieties). Expect a lot of chirping and tweeting and plenty of colour.

You can bring along your own pet bird (in a cage) and have it judged and possibly win a prize. As this show is on the National Calendar, bird owners and breeders will be vying for top placings.

The local club meets every second Tuesday of the month at the Masonic Lodge on the corner of Dublin and Keith Streets, at 7pm. They have a variety of speakers as well as question time for members. There is considerable knowledge and expertise built up over the years in the membership.

Current membership is around 40, with members coming from as far afield as Patea and Marton. The club started in 1935.

## Talking menopause

This seminar is what every woman needs to hear, whether you are perimenopausal or postmenopausal, you will benefit from it.

What many women perhaps are aware of, is that the effects of menopause are lifelong – we are not in a phase. So those who should benefit from the seminar are the following:

- \*A perimenopausal woman who feels out of touch with her brain and body
- \*A midlife woman who wants to become an older woman who's vibrant, energetic and healthy.
- \*A postmenopausal woman, who needs to know what the effects of having no oestrogen are, and how to create a healthy, active life.

The seminar will discuss how menopause impacts your health, plus more on exercise, weight loss, nutrition, incontinence, and bladder and bowel concerns.

Many people missed out last time, so you will need to register early to reserve your seat. Tickets are \$30, with proceeds going to the Whanganui Women's Network. To register, email [results@herfitness.co.nz](mailto:results@herfitness.co.nz), or phone 348 9121. Refer to the advert on this page for more information.

**FOR THE BEST HIRE EQUIPMENT IN TOWN**  
**MARQUEES • MACHINERY HIRE PARTY HIRE & SALES**

**HARRISON'S HireMaster WANGANUI**  
26 CHURTON STREET PH 345 7017

**MARQUEES AND WEDDING EQUIPMENT**  
[www.hiremasterwanganui.co.nz](http://www.hiremasterwanganui.co.nz)

**TALKING MENOPAUSE**

A conversation every woman in midlife needs to be part of. Grab your girlfriends and come and unwrap why menopause can seem so confusing.

**Let's talk about:**

- Menopause, sex, hormones, the bits inbetween and what happens when!
- Exercise, weight gain and why it is so common.
- The role of exercise at any age, especially across midlife.
- Foods that support menopausal women.
- Tips to manage bowel, bladder and vaginal changes.

**DETAILS**

**DATE:** Tuesday 30 April  
**TIME:** 6.00pm - 8.00pm  
**VENUE:** St Paul's Church Hall, Cooks Street  
**COST:** \$30 with proceeds to The Women's Network - Whanganui

**THE PANEL**

**Deborah Gardiner**  
Menopause Consultant & Owner of Whanganui Menopause Health Centre

**Angela Hewson**  
Personal Trainer & Owner of Her Fitness Ltd

**Karen Sewell**  
Chef & Owner of The Honest Kitchen

**Lane Malan**  
Physiotherapist at Physio Direct

**Help us with the big decisions**  
**Have your say on our Long-Term Plan**

**HAVE YOUR SAY KŌRERO MAI**

The Long-Term Plan is our 10 year plan and shows the whole picture of how activities are managed, delivered and funded – which has a flow on effect on our rates.

There are some difficult, big decisions to make, so we want to hear your feedback on what you'd like prioritised.

Find our consultation document, the questions we're asking you and submit your feedback here

[www.whanganui.govt.nz/HaveYourSay](http://www.whanganui.govt.nz/HaveYourSay)

or pop in and see us at 101 Guyton Street.

WHANGANUI DISTRICT COUNCIL  
Te Kaunihera a Rohe o Whanganui

# A farewell concert for NZ String Quartet's Monique Lapins

Over the past eight years Whanganui audiences have come to know Monique Lapins (second violinist of our Patrons, the NZ String Quartet), and have enjoyed the tremendous energy, artistry and musical depth she has brought to the Quartet's performances. It is sad news that Monique will soon leave the Quartet to embark on new musical ventures. Luckily, we have the opportunity to hear Monique perform one last time with the NZSQ when they play in Whanganui's Concert Chamber on Thursday, 2nd May, at 7.30pm.

2024 began in a very adventurous spirit for the NZSQ, not only with their highly successful 30th Adam's Chamber Music Festival in Nelson, but also with sold-out concerts at Zealandia "Sounds of the Sanctuary" (matching birdsong to music), at the Rembrandt-Remastered



Monique Lapins, Gillian Ansell, Helen Pohl and Rolf Gjelstin

exhibition at the NZ Academy of Fine Arts "Masters of Light and Sound". In addition, there were innovative community performances at The Performance Arcade, Te

Papa ... Tā Oro X NZSQ, with taonga pūoro expert Horomona Horo and visual artist Regan Balzer. Returning to a more traditional format, Chamber Music Whanganui is

delighted to welcome the NZ String Quartet for the second concert in our 2024 subscription series. Their programme, "Romanticism & Impressionism," features quartets by Brahms and Debussy as well as a short work by NZ composer, Leonie Holmes.

Written just 20 years apart, the Brahms and Debussy quartets offer very different listening experiences, from the Romantic melodies of Brahms to Debussy's play on light and shade, texture and musical colour, his quartet being likened to the paintings of William Turner. To hear these pieces live in concert is a rare treat.

Tickets are available for this concert in advance from the Box Office of the Royal Whanganui Opera House, or at the door (cash only, no eftpos).

Adults 40.00, Seniors 35.00, CMW subscribers 25.00 (or pre-pay), Students 5.00.

Subscriptions for the 2024 concert series are still available from the RWOH.

# Thrive Whanganui collaborates with Ruapehu council to empower entrepreneurs



Thrive Whanganui is excited to announce the upcoming event, "Be your own Boss - Whakatere te Moemoeā," a two-day wānanga from the 20th to the 21st April, 2024. In collaboration with The Ruapehu District Council, this is a unique opportunity for whānau across the rohe to connect back with other new pakihi (businesses) and accelerate their business ideas in a safe and empowering environment. This event, hosted at Morero Marae in Taumarunui, is designed to guide aspiring entrepreneurs from business idea to reality with both new concepts and existing business ideas welcome.

James Paul, Partnerships and Programme Lead at Thrive Whanganui says, "Entrepreneurship is a journey that requires support and fostering on many levels, not least from those in one's own community travelling a similar path. Understanding best practice from a mātauranga Māori perspective will ensure Māori entrepreneurship flourishes in the Ruapehu region".

Kim Treen, Business Relationship & Development Manager at Ruapehu District Council says, "we are proud to work with and support Thrive, who are empowering individuals to realize their business aspirations and help drive entrepreneurs in our district."

Key Highlights of the "Be your own Boss - Whakatere te Moemoeā" wānanga are:

- Hands-On Learning: The wānanga focuses on practical skills and real-world application, ensuring that all activities directly relate to participants' business ideas.

- Understanding your strengths and weaknesses: Participants will learn to recognize their strengths, address weaknesses, and determine effective approaches for personal and business

growth.

- Adaptability: Giving participants the skills and confidence to embrace change, seize opportunities, and know when to step back and re-think.

- Tools for Self-Paced Progress: Attendees will receive resources and worksheets, enabling them to continue working at their own pace even after the wānanga concludes.

Everyone who attends the event will be gifted some incredible resources including:

- The Boss Book: A comprehensive business planning guide with exercises, templates, and examples to navigate the business planning journey.

- Target Market Segmentation Tool: A tool to help pakihi refine their target markets for more effective marketing plans.

- Plan on a Page: A visually appealing and concise tool to stay focused on business goals and values.

Thrive Whanganui encourages participants to embrace the opportunity to connect, learn, and leave with a solid plan for their entrepreneurial journey.

To register or for more information, visit <https://www.thrivenow.org.nz/byob-registration>, email [kiaora@thrivenow.org.nz](mailto:kiaora@thrivenow.org.nz) or phone/text 027 302 0979.

## NEXT WEEK'S RCP PAPER DELIVERY

Please note: with Anzac Day falling on a Thursday this year, couriers will not be operating. This means RCP will not arrive into Whanganui for delivery until Friday, April 26 next week. We apologise for any inconvenience

## LOOKING FOR A REAL ESTATE CONSULTANT?

**CALL RACHEL MILLER**

Let Rachel help you sell your home. Schedule your appointment to get your market evaluation. All new listings receive complimentary marketing.

027 526 5969  
[rachel.m@arizto.co.nz](mailto:rachel.m@arizto.co.nz)  
Licensed Salesperson (REAA 2008)

To view my current listings

## Future-proof your home with Retro Fit Double Glazing or Insert Aluminium Windows

Make your home healthier, more energy efficient and better for the environment.

**Did you know your bank may be able to help with low fixed-rate loans?**

No interest or 1% fixed interest loans are available to support Healthy Homes upgrades. Contact your bank for criteria and eligibility.

**We can manufacture and install modern & efficient windows in any home**

For more information on window solutions visit [www.rivercityaluminium.co.nz/healthy-homes](http://www.rivercityaluminium.co.nz/healthy-homes) or phone 06-348 7063

RIVERCITY BUILDING & ALUMINIUM - 7 Wilson Street, Whanganui

LICENSED BUILDING PRACTITIONERS  
Building confidence

window & glass association nz  
member

# Jax Hair Studio - evolving with style in the heart of our community

For three decades, Jax Hair Studio has been a recognised business in our community, first gracing Ridgway Street with its presence before making a stylish mark on Somme Pde. As we celebrate this remarkable journey, it's with great excitement that we announce a new chapter in our journey of professional hair care products and services.

Understanding the dynamic needs of our clientele and the ever-evolving trends in hair care, we at Jax Hair Studio are thrilled to share our latest innovation in services. To better serve you and enhance our expertise, we are now introducing a dual-studio concept that promises to cater to every aspect of your hair

care needs.

**Welcome to Jax ensomme: Our New Colour and Hair Extension Destination.** Our newly inaugurated Jax ensomme, located just a heartbeat away on the banks of the Whanganui River, will become your exclusive haven for all hairdressing services. Here, creativity meets technology with a great colour range offering organically derived ingredients. Whether you're thinking of a bold new look or subtle highlights, our stylists will ensure your needs are catered for. Call us to discuss our range of hair extensions services on offer.

**Jax Hair Studio: Cutting and Styling Back** at our beloved original location on Ridgway Street, Jax Hair Studio

will continue to offer cutting, styling and treatment services. Recognising a significant demand for dedicated cutting and styling services in our region for busy people, we've tailored our studio to focus solely on cutting, styling and conditioning treatments. Whether you need a fresh cut, a blow wave or a straightening service, our qualified stylists are available to look after your needs. Bookings or walk-in appointments welcome six days a week including a late night.

**Sustainability in Hair Care**

At both Jax Hair Studio and Jax ensomme, our commitment to quality and sustainability remains unwavering. We are proud to continue offering top-tier conditioning

and express treatments, alongside the renowned De Lorenzo professional hair care range. Our selection of professional products and accessories remains curated to ensure you have access to the best, while our sustainable salon practices guarantee that your beauty does not come at the expense of our environment. An extensive range of GHD's will still be available at our Ridgway Street location.

We invite you to experience the tailored expertise at Jax Hair Studio and Jax ensomme. Let us take you on a journey innovation, where your hair receives the attention it deserves. Our doors are open, our stylists are ready, and your next good hair day awaits. - supplied



Uriah Wallace, Loren Fore and Justine Sutterfield

## 'A Little Princess' ballet will appeal to both children and adults

Whanganui Ballet and Dance Academy is proud to present 'A Little Princess' an adaption of the beloved children's book, written by Frances Hodgson Burnett.

"I have tried to make this ballet appealing to both children and adults", says WBDA Director Anna Chandulal.

Apart from young children performing classical ballet, there will also be a pantomime performed by adults and a professional dancer performing a lyrical contemporary solo to live music performed by Obus and Lorida Venter.

The story of 'A Little Princess' starts with Sara and her father in India. Sara's father is sent to fight in WWI and takes Sara to safety at a private boarding school for girls in New York City.

Sara meets the scary and mean Miss Minchin but soon makes friends, including the servant girl, Becky.

Later, Sara is told her father has died in battle, and she is sent to the attic to live with the other servants.

A kind assistant teacher, Miss Amelia, brings the girls food, and there is a delightful pas de deux/ pantomime between Miss Amelia and her beau, the milkman.

Miss Minchin believes Sara has stolen the food and calls the police. A hilarious chase evolves, including Sara, Miss Amelia, the milkman, Miss Minchin and the police.

The school has a beautiful wardrobe of costumes designed by Alice Preston, former seamstress with the Royal New Zealand Ballet.

Jennifer Taylor Moore has also created the most



From left: Mckayla Hoyle, Ruby Groves, Caleb Loader, Mila Koubaridis, Rebekah Pearson, Payton Koubaridis and Shiloh McIvor- Ramirez

beautiful sequin and feather headpieces.

"I'm very lucky to have such a lovely group of talented children and a multi-talented and supportive adult community at Whanganui Ballet and Dance Academy," Anna says.

This show is really colourful, with beautiful music, humour and of course wonderful dancing.

There even have a cameo appearance from Councillor Josh Chandulal-Mackay as a WWI soldier.

'A Little Princess' is

**River City Press**  
Positive news stories and advertising welcomed  
email: [rivercitypress@xtra.co.nz](mailto:rivercitypress@xtra.co.nz) - phone 345 3666

performed at The Royal Whanganui Opera House on April 20 at 5pm and April 21 at 2pm. Tickets are available

from the RWOH box office or online: <https://rwoh.sales.ticketsearch.com/sales/salesevent/132243>



### JAX HAIR STUDIO

Cutting, Styling & Treatment Services

51a Ridgway Street  
06 347 2008

OPEN  
Monday to Saturday  
Late Night Wednesday  
Accessible carpark nearby

### JAX ENSOMME

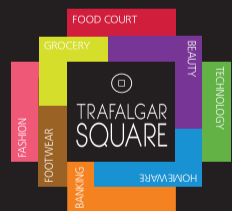
All Hairdressing & Hair Extension Services

114 Somme Parade  
06 343 1225

OPEN  
Tuesday to Saturday  
Late Night Tuesday  
Free on & offsite parking

Both salons offer a loyalty system and concession cards. We are both accessible and Gold Cards are welcome.

Bookings not always necessary otherwise call us to secure a time or use our online booking service.



### Normal Trafalgar Square trading hours:

**Countdown:** 7.00am until 10.00pm 7 days  
**Specialty Stores:** 9.00am - 5.30pm Mon to Fri  
**The Warehouse:** 8.00am until 9.00pm 7 days  
9.00am - 4.00pm Saturday  
10.00am - 4.00pm Sunday



### Anzac Day Thursday 25 April

Countdown 1pm - 10pm  
The Warehouse 1pm - 9pm  
Food Court 12noon - 4pm  
Specialty Stores 1pm - 4pm

Individual store hours may vary, if you are visiting a specific store we recommend you call or visit their website or social channels beforehand.

Angel Touch	Hair 021 144 9558 Nails 021 210 3349	Kiwiana Café	(06) 345 2590	Technofix	(06) 345 0729
A Taste of Indian Castle Eatery	(06) 345 0863	Millers	(06) 345 3965	The 123 Mart	(06) 345 2122
Awa Gifts - Māori Shop	(06) 348 4994	Mister Minit	(06) 345 0484	The Treat Zone	(06) 348 8103
Bloody Burgers	(06) 213 0799	Number 1 Shoes/Hannahs	(06) 348 8495	The Warehouse / Warehouse Stationery	(06) 348 0171
Carpet Court	(06) 777 3028	O & Bowl	(06) 213 4284	Trafalgar Lotto	(06) 348 8291
Countdown	(06) 349 0199	Ocggi Sushi	(06) 213 4282	World Travellers	(06) 348 8190
EB Games	(06) 348 9242	Paper Plus / NZ Post	(06) 348 0351		
Just Cuts	(06) 348 0466	Roasties Carvery	(06) 345 2590		
		Tank Juice	(06) 262 7009		

[www.trafalgarsquare.co.nz](http://www.trafalgarsquare.co.nz)

Trafalgar Square Shopping Centre | 100 Taupo Quay, Whanganui | Ph 06 348 0314



# Opportunity for local artists to celebrate Whanganui



Art light boxes during the Drews Avenue Street party

Whanganui District Council is opening up opportunities for local, emerging artists to display their artwork as part of the Waka Kotahi-funded Streets for People projects on Guyton and St Hill streets.

Applications are now open for artists to submit ideas, with two distinct spaces available. Artists can contribute both new and existing artworks and propose ideas for both spaces.

The first space, along Guyton Street, will be known as 'Glow Gallery' – with one of three panels available in a lightbox for art with themes of social connection and/or Te Taiao (our

natural environment).

The other space for creativity will be the 'Fenciful Gallery' on St Hill Street, where A0 corflute boards will adorn the fenced area near the new public transport hub. For this space, artists should convey themes relating to public transport and/or Te Taiao.

Deputy Mayor Helen Craig, who is part of the Public Art Steering Group and has chaired the Town Centre Regeneration Committee, says, "This is a fantastic opportunity for local artists of all genres to display an image of their artwork for the public to enjoy as a public artwork.

An additional bonus is the selected works will receive an artist fee in recognition of the artist's professionalism and value."

For artists interested in submitting a proposal, visit whanganui.govt.nz/

streets-for-people and download the site-specific brief documents for more details on proposal requirements and artist fees.

The deadline for submissions is Friday, 26 April.

## River City Press

Positive news stories and advertising welcomed

Whanganui's only locally owned and operated news media

email: rivercitypress@xtra.co.nz - phone 345 3666



# Alzheimer's WHANGANUI INC

# GARAGE SALE

This Saturday, 8am-1pm • Suite 4, 236 Victoria Ave

## Mother's Day High Tea - Sunday 12 May 2024

## Garage Sale this Saturday and High Tea event for Mother's Day to help raise funds for Alzheimer's Whanganui

"Help us to make a difference by supporting our cause"

Alzheimer's Whanganui, is hosting two major fundraising events over the next few weeks.

**GARAGE SALE**  
Saturday, April 20th, they are hosting a Garage Sale from 8.00am to 1.00pm at their premises 4/236 Victoria Avenue, Whanganui. There are household items, camping gear, toys, clothes, furniture and appliances to be bought!

**HIGH TEA**  
The last High Tea we held was a big success so we are doing it again for Mother's Day. Sunday, May 12th, 'Mums the

Word' celebrate Mother's Day with HIGH TEA at Wanganui Golf Club.

Bookings are essential as there are a limited number of tickets available. High

Tea tickets can be purchased from Alzheimer's Whanganui Office, 4/236

Victoria Avenue, Whanganui. Cash only.

Please contact by phone 06 345 8833 or email: admin@alzheimerswhanganui.org.nz

Admin Office is open from 9.00am to 2.30pm Monday to Friday.

Funds raised will help Alzheimer's Whanganui make a difference for those in need, offering support for carers/whānau and community engagement for those with dementia. Alzheimer's Whanganui believes in Dignity and

Integrity for our people. "A dementia-friendly New Zealand"

If you have any concerns regarding memory loss please do not hesitate to reach out to us. We are more than happy to help you where we can.



Alzheimers Whanganui, Suite 4/236 Victoria Avenue, Whanganui is at the back of this building by Jets Gym.

ALZHEIMERS WHANGANUI INC.

MOTHER'S DAY  
HIGH TEA  
SUNDAY 12 MAY 2024

@

WHANGANUI GOLF CLUB  
14 CLARKSON AVENUE  
WHANGANUI

DOORS OPEN AT 2:15PM

TICKETS: \$35

(includes a glass of bubbly punch or non-alcoholic drink)  
Spot Prizes and Raffle on the day

AVAILABLE FROM ALZHEIMERS  
WHANGANUI

4/236 VICTORIA AVENUE  
TELEPHONE 06-345-8833

Email: admin@alzheimerswhanganui.org.nz

NUMBERS ARE LIMITED  
BOOKINGS ESSENTIAL BY 10 MAY

## Stroke Wanganui



Enquiries welcome.

Stroke Wanganui President  
Judith Massey  
Phone 348 9554  
or 027 3343 8866

Secretary/Treasurer  
Sharon Winduss  
Phone 027 294 9897

Community Service Advisor  
Diane MacDonald  
Phone 028 8500 0470  
or 345 1370



Okere House welcomes your enquiries ...



As a Specialised Dementia Care Facility we offer Day Care, Respite and Residential Care for your loved ones in a warm and friendly environment

Please phone 06 348 4857 for more information  
35 Treadwell St, Wanganui



# Cr Michael Law suggests big cuts to reduce rates increase

Councillor Michael Law is proposing limiting the rates increase to 5.4%. On a Facebook post, Councillor Michael Law claims that "By choosing wisely, we can keep some popular services and still hit our 5.4% goal," and adds "I won't lie - getting to 5.4% will be tough." He explains, "My fear is for the 36% of our population that are on low earnings, this 12.8% increase on residential might not be affordable for them."

- Among his suggestions are:
1. Close Davis Library on a Monday. Save \$43,000
  2. Close the Repertory Theatre building.
  3. Drop off points for Rural Rubbish. Close for a saving of \$175,000 per year. "It is not a council responsibility to remove rubbish for free, at a cost for everyone."
  4. Close the Gonville Library. Keep it as a community hub.
  5. Community Grant Funding. "It is not the council's job to be donating to charity and my recommendation is to reduce

6. Masters Games. "A profitable and successful event that does not need \$100,000 of resident money to be successful."
  7. Close the Mobile Library. Saves \$45,000 per year.
  8. Public Arts. \$176,000. "Times are tight, and our art scene should understand that."
  9. Close the Home Service Library. Save \$35,000 per year.
  10. Coastal Action Plan. "\$27,000 can be saved by not borrowing large sums for projects without objective end results."
  11. Whanganui Boat Centre (Waimarie). End contribution of \$67,000.
  12. Climate Change Fund. "Remove completely until needed." Save \$110,000.
- Council to look more closely at the following items which have not been considered.
- A. CBD maintenance, electricity, gas and overheads.
  - B. Port: \$1,798,000. "What work has been done to reduce spending?"

Councillor Law's other suggestions include:

- Whanganui East Pool. "Remove any plans for future development until a report is brought to council on the viability of outside swimming in Whanganui and to reduce maintenance costs to a minimum. This will mean \$440,000 will be reduced to \$110,000 for the summer period, with no loss of jobs."
- Virginia Lake Aviary. "I would like to see the council privatise this facility to ensure its success and without council interference in the future."
- Glassworks. "Keep, but seek a buyer."

In total, he believes that that savings could amount to \$7m in total, and adds, "I am hoping to get lots of good feedback that can steer the decision-making in the coming months. Next term, I want to grow our economy, which means greater household income, which is why it's so important to link max rate rises to average household income increases. As a council, we shouldn't make people's lives worse." - Edited

# Granny's Christmas Grotto items up for auction next month

All roads will lead to Marton on the 4th of May as the Granny's Christmas Grotto collection goes under the hammer. After more than 30 years of collecting 'all things Christmas' Jenny Greener (aka Granny) is saying goodbye to thousands of Christmas treasures.

Jenny has been blown away by the response from people all over New Zealand; from Central Otago to North of Auckland, people will wend their way to the Rangitikei by cars, planes, and campervans in the hope of winning a bid.

Despite the sadness at saying goodbye to a collection that has meant so much to her, Jenny, in true Christmas spirit, sees it as an opportunity to spread more joy, saying, "The auction is an unknown; maybe someone will set up another Granny's Grotto, or maybe the objects of Christmas joy

will be shared across the country for families to welcome into their own Christmas traditions. A little bit of Granny's Grotto will live on all around New Zealand".

Putting the collection into auction lots was completed on Monday: over 600 lots in total. The Christmas trees will be auctioned with all the decorations in place, lights, baubles, and all.

The auction takes place at Granny's Grotto, 1 Main Street, Marton, on Saturday, 4 May, starting at 10am. Granny's Grotto will be open on Friday, 3 May, for viewing from 1-5pm and 8am to 9.45am on the Saturday morning. Jenny adds, "If anyone is unable to make the viewing times, I'm available all week. Just give me a call, or message me on phone or Facebook." Phone 027 277 5005 or follow on Facebook, Granny's Christmas



Grotto. Absentee bids are possible too; just contact the registered auctioneers, Hayward's Whanganui, to organise, 022 176 8568.

Jenny openly acknowledges mixed emotions as the bid day draws near, saying, "I'm a bit anxious and I'm sure at the end of it all I'll have a good blubber, but you know what, I've been so lucky. I've met some amazing

people including joyful helpers over the years, and the team at Haywards has been wonderful, too. Granny's Grotto has been a gift from start to finish."

If the thought of having a slice of the 'the spirit of Christmas' from Granny's Christmas Grotto excites, then the auction is the place to be on the 4th of May.

# Horizons councillors Facebook livestream recording on Long-Term Plan consultation viewable

The consultation period for Horizons Regional Council's draft 2024-34 Long-term Plan (LTP) is into its final week, with people encouraged to put forward their submissions by 5pm Monday 22 April.

The draft LTP is Horizons' plan for council's activities, including how it will ensure sustainable use of the region's natural resources for the next ten years - and how it proposes to rate for it.

"Over the past couple of weeks, we have seen plenty of chatter on social media around aspects of the Long-term Plan," says Horizons Regional Council chair Rachel Keedwell.

"It's great to see members of our community are passionate about the work that we do. However, it is important to convert those conversations into submissions, so their opinions can be taken into account when we as a council sit down in a few weeks' time to deliberate and adopt the final Long-term Plan."

"Submitting on the Long-term Plan via the Horizons website is really easy, and only takes a few minutes to complete. While many submitters will put forward lengthy submissions, people can also simply tick their preferred options for each of our activities under consultation, or, if they wish, provide feedback on any area of our business."

Activities out for consultation include proposed options for levels of service to

do with highly productive land mapping, options for taking an integrated catchment management approach, changes to river management asset insurance, freshwater activities, passenger transport services, and cost recovery for the water metering programme. In addition, council have proposed some changes to funding policies, including how drainage schemes are funded.

"While we have received feedback on all of our consultation topics so far, the topics which have had the highest level of interest focus are passenger transport, across the region and within Whanganui and Horowhenua, as well as levels of service for freshwater activities."

Chair Rachel Keedwell and councillor Sam Fergusson were available to discuss all things Long-term Plan on Wednesday 17 April, livestreaming on the Horizons Regional Council Facebook page.

"To ensure accessibility and enable conversations with our community, councillors have been attending public events across the region. The livestream recording, via Facebook, is available to view throughout the remainder of the consultation period."

Information and an online submission form for the Horizons Long-term Plan are available online at [www.haveyoursay.horizons.govt.nz](http://www.haveyoursay.horizons.govt.nz). For hard copies of the consultation document or submission form, please visit your local Horizons service centre or call 0508 800 800.



## Horizons' Long-term Plan 2024-34 is open for consultation.



SUBMISSIONS CLOSING SOON

Lets look long term for our region at [haveyoursay.horizons.govt.nz](http://haveyoursay.horizons.govt.nz)

Submissions close Monday 22 April 2024




For more information visit [www.horizons.govt.nz](http://www.horizons.govt.nz) or freephone Horizons on 0508 800 800



# AUCTION • AUCTION • AUCTION

## SATURDAY 4 MAY 2024 at 10am

at Granny's Christmas Grotto, 1 Main Street, Marton

### Viewing on Friday 3 May, 1pm-5pm

Enquiries please contact

Granny's - 027 277 5005
Haywards Wanganui - 022 176 8568



<p><b>2018 NISSAN NOTE PREMIUM</b></p>  <p>1.2L auto, top model, alloys, body kit, high seating, practical space, tints, alloys.</p> <p>Just arrived! <b>NOW \$13,995</b></p>	<p><b>2019 SUZUKI CELERIO GLX</b></p>  <p>1.0L, auto, NZ new, only 9,800 kms, economical, high seating, alloys, bluetooth, 6 airbags, great buy.</p> <p>was \$13,995 <b>NOW \$12,995</b></p>	<p><b>2015 SUZUKI HUSTLER</b></p>  <p>658cc, auto, only 74,000kms, high seating, climate a/c, auto lights, keyless start, safety package, quirky &amp; practical!</p> <p>was \$16,995 <b>NOW \$13,995</b></p>	<p><b>2019 TOYOTA COROLLA SPORT HYBRID</b></p>  <p>1.8L Hybrid auto, only 73,000 kms, aftermarket alloys, tints, parking sensors, loaded with features!</p> <p>was \$25,995 <b>NOW \$24,995</b></p>	<p><b>2016 TOYOTA PRIUS HYBRID</b></p>  <p>1.8L Hybrid auto, only 23,700kms, reverse camera, large boot, parking sensors, tints, great value and economical!</p> <p>was \$24,995 <b>NOW \$23,750</b></p>
<p><b>2021 TOYOTA AQUA G</b></p>  <p>1.5L Hybrid auto, like new, only 1,935kms, great colour, 360 camera, climate a/c, high spec, must see!</p> <p>was \$31,995 <b>NOW \$29,995</b></p>	<p><b>2016 FORD FIESTA TREND</b></p>  <p>1.5L auto, NZ new, only 45,000 kms, 17" alloys, sporty stripes, bluetooth, cruise control.</p> <p>Just arrived! <b>NOW \$12,995</b></p>	<p><b>2018 HOLDEN SPARK LT</b></p>  <p>1.4L auto, NZ new, only 37,000kms, leather, bluetooth, cruise control, reverse camera.</p> <p>was \$14,995 <b>NOW \$13,995</b></p>	<p><b>2020 NISSAN NOTE E-POWER</b></p>  <p>1.2L Hybrid auto, only 75,000 kms, high seating, economical, safety package, parking sensors, large boot.</p> <p>was \$19,995 <b>NOW \$18,995</b></p>	<p><b>2019 SUZUKI SWIFT SPORT</b></p>  <p>1.4L turbo manual, NZ new, only 34,000 kms, 1 owner, GPS, bluetooth, reverse camera, great buy!</p> <p>was \$21,995 <b>NOW \$19,995</b></p>
<p><b>2017 SUZUKI BALENO RS XT</b></p>  <p>1.0L turbo, auto, only 41,000kms, adaptive cruise, anti-collision, tints, alloys, sporty!</p> <p>was \$17,995 <b>NOW \$16,500</b></p>	<p><b>2017 SUZUKI IGNIS HYBRID</b></p>  <p>1.2L Hybrid auto, only 32,000 kms, tints, alloys, high seating, economical, great colour!</p> <p>was \$16,995 <b>NOW \$15,995</b></p>	<p><b>2021 HYUNDAI i30</b></p>  <p>1.5L auto, NZ new, only 13,000 kms, bluetooth, reverse camera, weather shields, great buy!</p> <p>was \$25,995 <b>NOW \$24,500</b></p>	<p><b>2017 SUZUKI BALENO XS LTD</b></p>  <p>1.2L auto, only 27,000kms, keyless, start/entry, adaptive cruise, tinted safe and economical.</p> <p>was \$16,995 <b>NOW \$15,750</b></p>	<p><b>2017 NISSAN MARCH S</b></p>  <p>1.0L auto, only 35,000 kms, ESP, a/c, immaculate condition, economical and late model!</p> <p>Just arrived <b>NOW \$12,995</b></p>
<p><b>2009 SUZUKI SX4 LTD</b></p>  <p>2.0L manual, NZ new top model, chain driven, cruise control, high seating, 6 airbags.</p> <p>was \$8,995 <b>NOW \$7,995</b></p>	<p><b>2023 NISSAN LEAF 59kWh</b></p>  <p>Electric, only 449kms, demo, 3985kms range, e-pedal, Apple CarPlay / Android Auto, 360 camera.</p> <p>was \$56,995 <b>NOW \$46,995</b></p>	<p><b>2009 HOLDEN CRUZE CD</b></p>  <p>2.0L turbo diesel, auto, cruise control, sporty alloys, towbar, auto lights, ESP, great buy!</p> <p>Just arrived! <b>NOW \$7,995</b></p>	<p><b>2013 SUBARU EXIGA</b></p>  <p>2.5L auto, 7 seater, alloys, tints, towbar, adaptive cruise control, keyless start, climate a/c.</p> <p>Just arrived <b>NOW \$11,995</b></p>	<p><b>2016 SUBARU IMPREZA SPORTS</b></p>  <p>1.6L auto, only 42,000kms, tints, alloys, adaptive cruise control, auto lights, keyless entry, sports hatch.</p> <p>was \$16,995 <b>NOW \$15,750</b></p>
<p><b>2016 FORD MUSTANG FASTBACK</b></p>  <p>5.0L auto, NZ new, only 30,000 kms, stage 2 upgrade, stunning sports car, be quick!</p> <p>Just arrived! <b>NOW \$59,995</b></p>	<p><b>2011 FORD FALCON XR6</b></p>  <p>4.0L auto, only 132,000kms, towbar, alloys, cruise control, perfect family vehicle.</p> <p>was \$15,995 <b>NOW \$14,750</b></p>	<p><b>2015 JAGUAR XE R-SPORT</b></p>  <p>2.0L turbo petrol, auto, NZ new, only 76,000 kms, leather, GPS, reverse camera, bluetooth, parking sensors.</p> <p>Just arrived <b>NOW \$24,995</b></p>	<p><b>2020 FORD ESCAPE ST-LINE</b></p>  <p>2.0L auto, 2WD, only 16,000 kms, reverse camera, parking sensors, bluetooth, adaptive cruise.</p> <p>Just arrived! <b>NOW \$29,995</b></p>	<p><b>2015 MAZDA CX-5 GSX</b></p>  <p>2.2L turbo diesel, NZ new, only 86,000kms, parking sensors, bluetooth, cruise control, towbar.</p> <p>was \$19,995 <b>NOW \$18,750</b></p>
<p><b>2015 SUBARU XV EYESIGHT</b></p>  <p>2.0L auto, AWD, only 65,000 kms, alloys, tints, adaptive cruise control, auto lights, safety package, sporty in black!</p> <p>Was \$21,995 <b>NOW \$20,500</b></p>	<p><b>2018 KIA NIRO EX HYBRID</b></p>  <p>1.6L Hybrid, only 129,000 kms, reverse camera, bluetooth, adaptive cruise control, Apple CarPlay.</p> <p>Just arrived <b>NOW \$16,995</b></p>	<p><b>2019 RENAULT KOLEOS ZEN</b></p>  <p>2.5L 4 cylinder, auto, only 49,000kms, NZ new, top model, leather, running boards, 20" alloys, tints, reverse camera.</p> <p>was \$29,995 <b>NOW \$28,995</b></p>	<p><b>2022 HYUNDAI KONA N</b></p>  <p>2.0L turbo, only 15,000 kms, like new, great savings from new, high seating, fast hatch!</p> <p>was \$52,995 <b>NOW \$49,995</b></p>	<p><b>2022 Haval JOLION ULTRA</b></p>  <p>1.5L turbo Hybrid NZ new, only 14,800 kms, like new, lots of features, leather, great savings from new!</p> <p>was \$32,995 <b>NOW \$31,995</b></p>
<p><b>2021 MITSUBISHI ASX VRX</b></p>  <p>2.4L 2WD, 1 owner, only 2,200kms, like new, roof rack, towbar, leather, weather shields, top model!</p> <p>Just arrived <b>NOW \$31,995</b></p>	<p><b>2018 SUZUKI VITARA TURBO</b></p>  <p>1.4L turbo auto, only 50,000 kms, NZ new, 1 owner, AWD, GPS, bluetooth, reverse camera, great buying!</p> <p>Just arrived <b>NOW \$23,995</b></p>	<p><b>2021 NISSAN QASHQAI ST</b></p>  <p>2.0L 2WD, auto, only 47,000 kms, 19" Ti alloys, reverse camera, bluetooth, cruise control, keyless entry &amp; start.</p> <p>Just arrived <b>NOW \$25,995</b></p>	<p><b>2018 NISSAN CARAVAN NV350</b></p>  <p>2.5L diesel, auto, only 93,000kms, twin sliding doors, reverse camera, work station, tints.</p> <p>was \$29,995 <b>NOW \$28,750</b></p>	<p><b>2018 NISSAN CARAVAN</b></p>  <p>2.5L turbo diesel, only 75,000kms, twin sliding doors, reverse camera, ESP, anti collision, like new!</p> <p>was \$31,995 <b>NOW \$29,995</b></p>
<p><b>2020 NISSAN NAVARA 4WD</b></p>  <p>2.3L turbo diesel, manual, only 51,000 kms, king cab, large flatdeck, towbar, bullbars.</p> <p>Just arrived! <b>NOW \$37,995</b></p>	<p><b>2017 HYUNDAI IMAX</b></p>  <p>2.5L turbo diesel, auto, NZ new, 1 owner, 8 seater, heated front seats, reverse camera, alloys.</p> <p>\$22,995 <b>NOW \$21,500</b></p>	<p><b>2014 NISSAN NAVARA ST</b></p>  <p>2.5L manual, 2WD, only 104,000kms, towbar, immaculate condition, black alloys, neu over.</p> <p>was \$ <b>SOLD</b> 00</p>	<p><b>2016 TOYOTA HILUX SR5 4WD</b></p>  <p>2.8L diesel auto, alloys, stone protector, canopy, towbar, running boards, GPS, reverse camera.</p> <p>was \$39,995 <b>NOW \$36,995</b></p>	<p><b>2016 NISSAN NAVARA ST</b></p>  <p>2.3L twin turbo, 4WD, auto, canopy, towbar, bluetooth, reverse camera, tubliner, ready for work!</p> <p>was \$34,995 <b>NOW \$32,995</b></p>

276 & 330 Victoria Avenue, Wanganui. Phone 06 345 5115



David Jones Motors



# Need help with home and business computing?



Justin from JustinTime Computing Solutions

If you need help with your home and/or your business computing and network support, Justin from JustinTime Computing Solutions Ltd has all the experience required.

After spending three years in England as a computer contractor, he and Tricia came to live in Whanganui (actually Fordell where Tricia was brought up) and Justin worked as a computer engineer for PEC Ltd in Marton, maker of fuel pump technology.

He has subsequently worked for a range of businesses, including international companies

in IT, providing desktop support and network administration and for the past year as an independent consultant, enjoying the opportunity working from home in a rural town.

As most problems can be sorted quickly over the phone, Justin offers remote assistance. Issues can be viruses, hardware failure, need for upgrades, slow internet, latest Windows products (Justin is a Microsoft Certified Professional), printing issues, home networks, wifi and buying a new computer.

You might have heard

of the Cloud but are uncertain how it can benefit you. Justin explains how it not only provides important backup for your files but also allows you to connect to those files anywhere you happen to be. With Microsoft Office 365 you can have 'Roaming Profile' which automatically synchronizes with your desktop layout and access to your favourite files and programmes.

He can also provide gaming solutions with networking and Virtual Private Network (VPN)

setup to allow you to get around location restrictions. For example you could connect with someone in the USA and appear to be operating there and not in New Zealand.

Another interesting and useful service he offers is moving from a fixed line to Voice Over (VOIP) using wi-fi. This is especially good for rest home residents who might struggle with a modern mobile phone.

Living in a rural area, Justin knows all about internet restrictions. How-

ever, as they have Starlink, a "game changer" they have access to high speed and reliable internet access. He can help rural residents improve their internet connections.

Justin has introduced some special rates. For home and non-profits he will charge \$30 an hour for the first 30 hours and for businesses, it is \$50 an hour for the first 30 hours.

He can be contacted on 027 491 3166. You can visit his website at [www.jtcs.tech](http://www.jtcs.tech).

## Agriculture Minister's roadshow comes to Fordell

Fresh from a trip to China, Agriculture Minister Hon. Todd McClay is visiting a woolshed near Fordell next Wednesday.

The visit is part of the Coalition Government's Woolshed Roadshow, where Minister McClay and his associates Hon. Andrew Hoggard and Hon. Mark Patterson are visiting farms across New Zealand to engage with farmers on their turf.

Whilst Minister McClay's visit to China involved meetings with Chinese government agricultural, trade and foreign affairs officials his Woolshed Roadshow is much more down to earth.



Todd McClay

"New Zealand's food and fibre sector is the backbone of our economy, contributing over 80 per cent of our goods exports to feed an estimated 40 million people worldwide" Minister McClay said.

"A strong and thriving

agricultural sector is crucial to the New Zealand economy" he said.

Whanganui MP Carl Bates is hosting the Roadshow event at Collins' woolshed, 1046 No. 2 Line, Fordell from 2pm on Wednesday, 24th April.

Bates noted, "It is important to hear from farmers face-to-face, and for us to reassure them that this government has their backs. I'm delighted Taranaki and Whanganui are included in the tour so the Ministers can hear first-hand what constituents here have been telling me when I meet with them."

Todd McClay said that farmers have faced a dif-

icult year with multiple issues, including weather events, high inflation and interest rates and ever-increasing compliance issues.

"We have a busy and critically important work programme in the Agriculture portfolio ahead of us to get our country back on track." he said.

Minister McClay will be joined at the Fordell meeting by Hon Andrew Hoggard, former Federated Farmers chairman.

"We are looking forward to hearing directly from farmers about issues affecting them the most and to engaging with them about how we can help them."

## Home & Business Computer and Network Support

**Home and non-profit Special:**  
\$30 per hour for the first 30 hours!

**Business Special:**  
\$50 per hour for the first 30 hours!

(Prices are plus GST)



JustinTime Computer Solutions Ltd

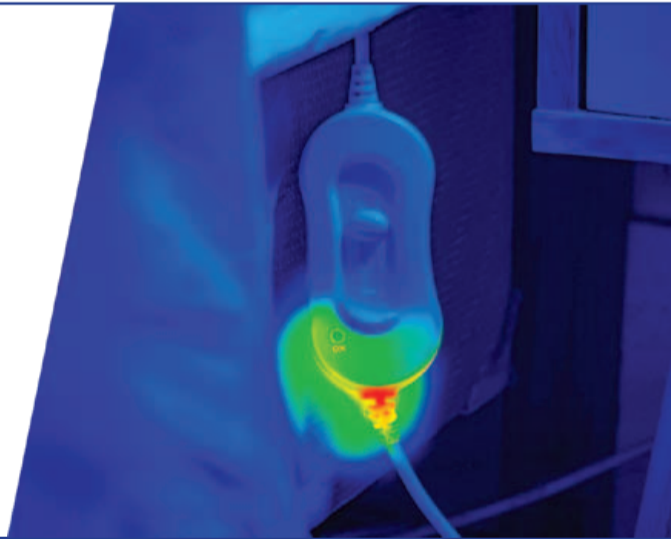
### Expert in:

- Home networking
- Microsoft Windows & Linux Computers
- Cloud computing platforms
- Remote Assistance
- Gaming solutions
- Telephony solutions

**Contact Justin** (a Microsoft Certified Professional)  
ph: **027 491 3166** web: **www.jtcs.tech**

# FREE ELECTRIC BLANKET TESTING

## SEE A FIRE BEFORE IT STARTS



Fire and Emergency New Zealand are offering free electric blanket testing with our partners Harvey Norman Whanganui and Laser Electrical Wanganui.

**ALL DAY SERVICE**

**DROP OFF / PICK UP SERVICE**

**Whanganui Fire Station**  
Friday 26th April | 9am – 3pm

**Citizen Advices Bureau: 120 Guyton Street**  
**Whanganui Fire Station: 89 Maria Place**

Drop off: April 22nd- 25th | 10am – 12pm  
Pick up: April 29th - May 1st | 10am – 12pm



# Whanganui's representative on Horizons Passenger Transport Committee recommends voting Option 1

Anthony Tonnon is Whanganui's representative on Horizons Passenger Transport Committee and he is strongly recommending that Whanganui residents vote for Option 1 on all Public Transport items in the Horizons long term plan.

As he says, "Whanganui has the biggest opportunity for public transport in 30 years in this Horizons Long Term Plan. With two projects: a new ridership-focused network for Whanganui by 2026 and new regional services, Whanganui can return to public transport that is simple, frequent, well-used, competitive with our neighbours, and also allows real travel options to and from Wellington, Palmy and beyond.

But the deciding factor will be your say on the Ho-

rizons Long Term Plan. He argues that filling out the form and choosing Option 1 on all Public Transport items will make a crucial difference. "Speaking to your submission and telling your friends about the plan will do even more."

If enough people choose Option 1 on all public transport questions, work can start on the following:

\* Direct, frequent buses for our main neighbourhoods, in a network designed for high ridership.

\* A 3-hour journey to Wellington by bus and train, with multiple services a day

\* Multiple return services a day to Palmerston North and Marton.

Anthony believes that "Only Option 1 will deliver these advantages - Option 2 represents a continuation of the 2000s low-ridership ap-

proach, while Option 3 represents no improvements."

You can fill out the consultation at <https://haveyoursay.horizons.govt.nz/2024-34LTPconsultation>

There are two items in the plan for Whanganui:

**A. Increased levels of public transport service - Whanganui (new ridership network) improvements.**

A summary of Anthony's submission is as follows:

Option 1 will see a new Ridership-focused bus network for Whanganui starting in 2025-2026. This Ridership approach is the one taken by cities like Nelson, Queenstown and Palmerston North, and the planned network for Hawkes Bay in 2025. This would replace Whanganui's 2000s era Coverage network - which is designed to provide a minimum level



The Tide bus

of service for low numbers of riders.

For most of the 20th century, Whanganui used the ridership approach to public transport - which simply means we aimed to make it usable for everyone with direct routes, longer hours, and good frequency. Both the Tram system and the Greyhound Bus system that followed it offered services of up to every 15 minutes.

Both networks ran seven days a week, and for six of these days, services ran from 6:45AM to 11PM.

Compare that to 2022 - just before the Tide started. Services ran every two hours (or less), which is unusable for most. They were also indirect, and service hours were also limited.

In practice, a new Ridership network could see the equivalent of three fre-

quent, Tide-like routes and some hourly routes, the extension of the Tide further to areas like outer Aramoho and Castlecliff, and longer hours of service - for example, service on Sundays and longer on Saturdays.

**B. New and improved regional (public transport) services**

Option 1 will allow a start to regional public transport services that allow Whanganui people to travel to Wellington, Palmerston North and beyond, with quick, regular and affordable services.

These services will link Whanganui to the Wellington rail network at Waikanae Station, meaning a journey to Wellington by bus and train will take around 3 hours instead of 4½, at less than half the current price. Services will run regularly enough that

Whanganui people can go to Wellington and return the same day. Whanganui and Marton residents will also be able to travel to Palmerston North and back multiple times a day at a \$6.50 fare each way, and travel between Marton and Whanganui will be regular options (at present Inter city is the only option).

Anthony points out that "the Tide has now been running for one year. In January last year, the last month before The Tide, there were 5739 boardings on all urban buses. This January, there were 12361, and 8114 of them came from The Tide." It has clearly been a success.

For more information go to <https://docs.google.com/document/d/1NZO0I1DOGJzYM9xRHSqA0qreyJoU1sso4eOFyrSajo/edit?usp=sharing>

## 2024 HOSPICE AWARENESS WEEK

# Hero Day

**Wednesday 15th May**

### MUFTI DAY FOR WHANGANUI SCHOOLS AND WORKPLACES

Go to school or work dressed as your favourite Superhero to support the 'Hospice Heroes' in our community.

JOIN THE ACTION WITH A GOLD COIN DONATION

Te Kohu Pounui ki Whanganui  
**hospice Whanganui**

# Schools and work-places encouraged to host a superhero/mufti-day to raise funds for Hospice

**AIT** allan tong ltd

Since 1945

**Proud to support HOSPICE WHANGANUI**

**Phone (06) 345 2743**

Ron Bakker 021 449 173  
Email: [allan.tong@xtra.co.nz](mailto:allan.tong@xtra.co.nz)

MEMBER  
**Master Painters**  
New Zealand

As part of Hospice Awareness Week, there will be a Hospice Hero Day on Wednesday, 15 May. It is an opportunity for Whanganui schools and workplaces to host a mufti-day in return for a gold coin donation.

It is also an opportunity for both students and adults to dress as your favourite superhero and in the process support the Hospice Heroes in our community.

Not all heroes wear capes but anyone taking part in Hero Day is a hero to Hospice Whanganui! Whoever your superhero is, it's time to get creative and active, all while raising money for your local hospice.

Hero Day is a special occasion to honour and appreciate the dedicated individuals who contribute to the success of our Hospice. This includes our frontline superhero clinical team, volunteers, donors, sponsors, and many others. It is a moment to raise awareness for the superheroes fighting life-limiting illnesses and for the families providing care during end-of-life.

Hero day is also about having fun, dressing up, celebrating all of our community Heroes. Your superhero might not be from TV or comic books, it could be a Mum or Dad, a favourite teacher, a celebrity, musician, neigh-



Dress as your favourite superhero to help raise funds for Hospice Whanganui

**dalglish ARCHITECTS**

Proud to support Hospice Whanganui with award winning architecture

06 347 9401 [dalglisharchitects.co.nz](http://dalglisharchitects.co.nz)

bour or friend who is special to you.

Hospice Whanganui encourages everyone to create a fun activity on the day, whether it be a morning tea, a quiz, a fun run or an art activity we would love for you to share your activity with them by posting to their Facebook page - <https://www.facebook.com/hospicewhanganui/>

They would love as many schools as possible and workplaces to take part, so come on, dress up, bring a gold coin and be Heroes for Hospice.

For more information, email [renaek@hospicewhanganui.org.nz](mailto:renaek@hospicewhanganui.org.nz)

**Driving Miss Daisy Whanganui**

Driving Miss Daisy is NZ's number 1 friendly and reliable companion driving service.

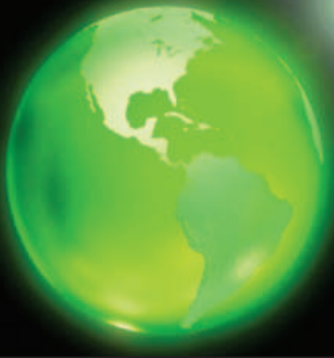
Driving Miss Daisy supports you with:

- Appointments, shopping and Social
- Caring extra support as needed
- Wheelchair accessibility
- Out of town trips

**ACC registered vendor.**  
**Total Mobility Cards accepted.**

Bookings essential.  
Ph: (06) 347 9100  
Mob: 021 503 313  
Email: [whanganui@drivingmissdaisy.co.nz](mailto:whanganui@drivingmissdaisy.co.nz)

Driving Miss Daisy



# WORLD EARTH DAY

## Monday 22 April, 2024

### Soft plastic receptacles now in Whanganui Theme: Planet vs Plastics

On Friday, 12 April, there was an opening of soft plastic collection receptacles at the Warehouse. There will be one located in the Warehouse and others at Countdown and the Resource Recovery Centre. New World is also fully supportive.

Representatives of The Packaging Forum gave the background to the decision. The concept started in 2015 with a "hiss and a roar." The soft plastics were sent to Australia for conversion into park benches.

However, by mid-2018, with China deciding not to receive large quantities of recycled plastic, the future was uncertain.

This is where Jerome Wenzlick from Future Posts stepped in. Described as a "farmer with a vision" his company makes fence posts and raised garden beds out of recycled soft plastics.

Today, there are over 400 collection points, with 300 in retail outlets including offices, councils and retirement villages. There are now two processing plants – in South Auckland and a new one in Blenheim to collect from the South Island. Over 85% of New Zealand's population will be within 20km of a collection point.

Last year, 705 tonnes were collected, the equivalent of 100 million bags or wrappers, and the target for this year is 100 tonnes. The expectation is to collect



From left to right: Holding a Future Post post - Rob Langford, CEO Packaging Forum; Jo Voice, Women's Refuge; Russell Burney, The Warehouse Sales Support Manager Whanganui; Phil Cumming, Group Sustainability Lead, The Warehouse Group; Lyn Mayes, Manager, Soft Plastic Recycling Scheme; Hassan Wong, General Manager, Future Post; Rob Vinsen, Chair of the Waste and Sustainability Advisory Group, Whanganui District Council; Jerome Wenzlick, Founder, Future Post.

one tonne per month in Whanganui.

Russell Burney, Regional Sales Manager, The Warehouse, said the collection was "good for us, our customers, the community, the planet." He said that all Warehouse stores will be solar-powered by 2026.

While most soft plastics will come from the food and grocery sector, it is also found in the wrapping of clothes, furniture and garden products (compost bags through to dog food bags are suitable). The rule of thumb is that if you can scrunch it into a ball – it is suitable. Even cat food

pouches, cleaned out, are acceptable.

Councillor Rob Vinsen who has held the Waste Portfolio since 2013, said the Council had approached The Packaging Forum in July 2023 and this decision is "a great opportunity for Whanganui."

Plastic Forum is 100% funded from industry through levies and is part of a global alliance. New Zealand was described as a "leading example" in that the process was inclusive of everyone.

To celebrate, the Scheme donated a Future Post raised garden

bed made from approximately 14,000 bread bags to Women's Refuge Whanganui who will start their own garden with garden products supplied by The Warehouse.

Earth Day is an annual event on April 22 to demonstrate support for environmental protection. First held on April 22, 1970, it now includes a wide range of events coordinated globally by Earthday.org including 1 billion people in more than 193 countries. The official theme for 2024 is "Planet vs. Plastics."

A young activist, Denis Hayes, was hired to be the National Coordinator for the first event which was going to be a teach-in. Hayes grew the event to include the entire United States. More than 20 million people poured out on the streets, and the first Earth Day remains the largest single-day protest in human history.

In 1990, Hayes took it internationally and organized events in 141 nations. On Earth Day 2016, the landmark Paris Climate Change Agreement was signed.

On Earth Day 2020, over 100 million people around the world observed the 50th anniversary in what is being referred to as the largest online mass mobilization in history.

The 2024 theme is Planet vs. Plastics and to mark that Earthday.org has



called for a 60% global reduction in plastic production by 2040.

Plastics extend beyond an imminent environmental issue; they present a grave threat to human health as alarming as climate change. As plastics break down into microplastics, they release toxic chemicals into our food and water sources and circulate through the air we breathe. Plastic production has grown to more than 380 million tons per year, and more plastic has been produced in the last ten years than in the entire 20th century. The industry plans to

grow explosively for the indefinite future.

The campaign's goals include:

1. Promoting widespread public awareness of the damage done by plastic to human, animal, and all biodiversity's health.

2. Rapidly phasing out all single-use plastics by 2030.

3. Demanding policies to end the scourge of fast fashion and the vast amount of plastic it produces.

4. Investing in innovative technologies and materials to build a plastic-free world.



Come and see us for all your renovating needs!

54 MARIA PL EXT  
WANGANUI  
GINZA BARGAINS  
COMPLEX

Ph 348 8208

**BURGESS**  
Matting & Surfacing Ltd  
New Zealand Owned Since 1951

Proud to support  
**World Earth Day**

0800 80 8570  
www.burgessmatting.co.nz  
sales@burgessmatting.co.nz

**THE SALVATION ARMY**  
Te Ope Whakaora

**HOMEWARE & CLOTHING DONATIONS NEEDED**

428 - 432 Victoria Avenue  
Phone 345 2779

Caring for People, Transforming Lives,  
Reforming Society

- Childcare for children 0 to 6 years old
- Offer 20 hours free\*
- Open 7.30am - 5.30pm
- Philosophy embedded with neuroscience

\* Terms & Conditions apply

Proudly supporting  
**World Earth Day**

**First Years**  
Learning Centre

38 & 44A Smithfield Road  
Phone 06 927 5402  
www.firstyearswanganui.co.nz

Find us on Facebook

We have friendly staff and an extensive range of quality used goods.

Come and see us today.

**Zest** FOR MISSION

**CITYMISSION** WHANGANUI

163 Victoria Avenue  
Whanganui  
Phone 345 2139

# Exhibition of Māori Contemporary Art from April 22

Arama Tuka will be exhibiting his colourful, large and full of meaning canvases in an exhibition of Māori Contemporary Art at the Whanganui Community Arts Centre at 19 Taupō Quay. The opening is at 5.30 on Monday, 22 April, and the exhibition will run through to Friday, 3 May. The title of the exhibition is Timatanga or new beginnings.

While he loved art, Arama instead completed a pre-apprenticeship engineering/automotive course, where his tutor, when he saw an example of Arama's art, said, "You should study art." However, he then took an Introduction to Small Business course, where again his tutor said, "You should study art."

And he did, studying for a three-year Bachelor of Design and Art at UCOL, completing it last year and building up a portfolio of his work for this exhibition. During his studies he enjoyed "the beauty and transparency of glass," photography – "what the eye truly sees" – and drawing, working his way through different disciplines before finding his preferred approach of abstract expressionism with a love of colour. He sums up his approach to art by saying, "It is my inner love and



Arama Tuka

passion. It is what makes me happy."

A theme of much of his work is 'Poutama' or Stairway to heaven – pathway to higher learning. He recalls listening to the kaumatua talking in the meeting house in Koriniti where his father was from, gazing at the tukutuku panels. These panels, and the stairway approach play a big part in his work.

There are also other motifs, such as the shark for its strength and reliance, their "indomitable spirit."

Another is Te Takarangi Spiral from the Māori creation account and the Roimata Toroa or the tears of the albatross.

Arama also loves painting landscapes based on his travels around the country. Some of his works have text included.

The paintings on canvas are colourful and large with one measuring 3.2 metres wide and 1.2 metres tall. They are for sale. The exhibition is open from 10am to 4pm each day.



# Anzac Day Flypasts 2024 over Whanganui

This year the Air Force Heritage Flight of New Zealand will conduct flypasts on ANZAC Day in the region around Ohakea, utilising aircraft from the Biggin Hill Historic Aircraft Centre at RNZAF Ohakea and current RNZAF aircraft.

The special formation will consist of the Supermarine Spitfire Mk IX, the North American P-51D Mustang and two Beechcraft Texans from the RNZAF. The 1944 Supermarine Spitfire will be flown by SQNLDR Stuart Anderson, the 1945 Mustang by SQNLDR Sean Perrett and the two Texans by pilots from the Central Flying School/14 Squadron.

**Supermarine Spitfire Mk IX PV270**

Built in Sept 1944 and served with RAF in WW2, post-war Italian Air Force, Israeli Air Force and Burmese Air Force. Rebuilt to airworthy condition between 2003 and 2009.



Spitfire over Whanganui

**North American P-51D Mustang**

Built in July 1945 and served with the RNZAF until 1957; stored in Māpua until recovered in 2020. Restored at Ohakea

**Beechcraft T6C Texan 2**

Served with RNZAF since 2014 with Central Flying School and 14

SQN. Used for pilot and instructor training.

The Flypast will be seen over Aramoho Cemetery at 10:21, Whanganui City 10:23 and Whanganui Airport at 10:24.

# International Grand Magic Show coming to Whanganui next week



The International Grand Magic Show is touring the country over April through to November and will be performing at the Royal Whanganui Opera House on Wednesday, April 24.

Producer and MC for the show, Reggie Gavēl, told the RCP that "the show at the Sky Tower, Auckland, is already fully booked." The tour will include 15 venues and 45 shows.

There are five main acts as follows:

1. Jean Phillipe, originally from France, who has been performing as a magician, comedian and circus entertainer worldwide for nearly 30 years.  
2. Mr How from Beijing, China. He will bring Oriental Magic to the stage, involving 'mentalism' (demonstrating

highly developed mental or intuitive abilities.) and involving audience interaction.

3. Andre Vegas, a New Zealand illusionist who will make a Harley Davidson motorcycle 'disappear.'

4. Felicity Rogers. "There are not many female magicians around, and she is New Zealand's only professional magician," explains Reggie.

5. Supporting acts include Katharina from Austria, Natasha from Australia and homegrown Elise from Nelson.

As Reggie says, "This is the largest magic and illusion show in the Southern Hemisphere."

The show is suitable for nearly all ages, from primary school students to grandparents. You can book your tickets at [www.grandmagicshow.nz](http://www.grandmagicshow.nz).

## WIN TICKETS

The RCP has a double pass to give away to one of our readers in a draw – but you need to respond quickly. All you need to do is to email [rivercitypress@xtra.co.nz](mailto:rivercitypress@xtra.co.nz) with Magic in the subject line and giving us your name and daytime contact details. You can also bring those details in to our office at 52 Ingestre Street.

As the draw will be made on Tuesday 23 at noon, you need to get those entries in ASAP.

**SAUL MAINTENANCE AND CONSTRUCTION LTD**  
Ph 06 348 7608 or 027 448 2929

"Honouring our brave ANZACs."

**BUILDING IDEAS MADE EASY**

Find us on Facebook

Always check the LPB register to ensure your building practitioner is currently licensed.

email: [service@saul.co.nz](mailto:service@saul.co.nz) [www.saul.co.nz](http://www.saul.co.nz) 209 Ingestre St, Wanganui

**PRUE ANDERSON ACCOUNTING LTD**

"Dedicated to those who fought so bravely."

297 St Hill Street | PO Box 902  
Whanganui 4541 | New Zealand  
Telephone (06) 345 3225

[www.pruemanderson.co.nz](http://www.pruemanderson.co.nz)

**Quinlan Court**

"Lest we forget."

Ph 06 348 9505  
59 Harrison Street, Whanganui  
[quinlancourt@sosj.org.au](mailto:quinlancourt@sosj.org.au)

'Fullness of life for the earth and its peoples'  
'Ki tonu tea o me te orokahanga a te tangata'

"We will always remember them."

**MORRIS & SON BUILDERS**  
WG 344 5160

"A day of remembrance for our lost ones."

**Whanganui Girls' College**  
Where Girls Shine  
[www.wgc.ac.nz](http://www.wgc.ac.nz) Phone 06 349 0944

"Honouring our brave ANZACs."

**Plumber Dan**  
Registered Plumber & Drainlayer  
Plumbing, Drainage, Gas & Heating  
Daniel Goldsworthy 021 635 517



# ANZAC DAY

THURSDAY 25 APRIL

We will remember them.



## The Anzac violin - Alexander Aitken's story

One of the books available at the Robyn Belton exhibition of her illustrations at the Locket Gallery on Guyton Street is 'The Anzac Violin' – the true story of New Zealander Alexander Aitken and his violin. It is written by Jennifer Beck and illustrated by Robyn.

While it might be seen as a 'children's book' – it is really one that appeals

to all levels. The story is a heartwarming one in the midst of war and all its atrocities. Apart from that, the illustrations are just wonderful.

It starts in 1915, on board ship going to Gallipoli. A winner of a violin in a shipboard raffle gives it to his former Otago shipmate Alexander because 'you're good at music.'

Alexander practised,

and by the time they got to Cairo, the troops were glad to listen to the music. But how was he to bring the violin to Gallipoli? His comrades helped by secretly passing the violin from hand to hand during kit inspections by the officers.

They were successful, and even as they fought their way up the ridge towards the top of Cha-

nuk Bair, his colleagues helped carry the violin. It was kept in a dugout by an Australian stretcher-bearer. He needed a violin string replaced, and a fellow soldier provided wire from a strand of a field telephone.

When they evacuated from Gallipoli, an Australian officer placed the violin with his own equipment. Moving to the Western Front in France, Alexander entrusted the violin to some nursing sisters in a hospice. When he returned to retrieve it, he played the sisters' favourite melodies.

Alexander became an officer and so left the violin with one of his men at the camp. He was injured and taken to hospital and then returned home on a hospital ship to Dunedin.



Robyn's drawing of the men passing on the violin.

In 1918 he received a package from London from one of his colleagues – his violin carefully restored by a famous music firm in London. As the book says, "His mates, half a world away, had kept watch over the treasured violin, remembering the man and the music that had lightened their spirits during those dark days of war."

Alexander later gifted the violin to his old school which still brings it out to be played each Anzac Day.

## Castlecliff Library to celebrate five years with author coming to talk on war books

On Saturday, 27 April, supporters of the Castlecliff Library will celebrate the library's fifth birthday. It will start at 6.30pm with a shared meal (please bring a plate) at the Duncan Pavilion, Castlecliff Beach, off Rangiora Street. The best form of food to bring would be finger food. About 40 people attended a similar function last year – despite the stormy conditions.



Dave Hayward, Author

ing serving in Malaya (his 1st novel, 'Point of the Spear' is based on that experience), and again in Borneo and Vietnam,

Dave is able to write from knowledge and experience of warfare. His second novel, 'Danger Close' is based on the Vietnam war.

They have invited Feilding-based author Dave Hayward to speak for about 20 minutes. He has written a number of novels described as 'Faction' as they are based on wars and battles both in New Zealand and overseas.

With a background of over 30 years in the New Zealand Army, includ-

With a lifelong interest in New Zealand's military history, Dave turned to the New Zealand wars with 'Redcoat and Korowai,' 'War,' and 'The Last Rangitira', becoming a trilogy based on the wars in Taranaki. The campaign against Te Kooti's Ringatu on the East Coast is the basis for 'Chasing the Ghost.'

Dave's interest in writing novels on military history has extended to New Zealand's involvement in the Boer War in South Africa with 'Horse Soldiers,' and to the New Zealand Mounted Rifles Brigade in the Sinai and Palestine during WWI.

His latest and ninth novel, 'Desert Scorpions' based on the Long Range Desert Group in North Africa in WWII, will be published this month.

Copies of some of his books will be available to purchase as Paiges Book Gallery will have them available at the Duncan Pavilion.

**DIY DEALS**  
Landscaping | Building | Fencing

**eastown** | TIMBER & FENCING | BuildLink  
Buy Better Build Better

06 349 0040 | 4 HOLYOAKE STREET, WANGANUI EAST  
WANGANUI 4500

www.eastownbuildlink.co.nz

**Wanganui Motors**  
82 Ridgway Street | Wanganui  
P 06 349 0930  
www.wanganuimotors.co.nz

Ford | Mazda | mfa

**Whanganui City College**

*Ka maumahara tonu tatou, kia ratou.*  
We will remember them.

84 Ingestre Street, PO Box 4010, WHANGANUI  
Phone 06 349 0180  
www.wcc.school.nz

**Aramoho MAGS & LOTTO**

*"Dedicated to those who fought so bravely."*  
*"Lest we forget"*

Aramoho Shopping Centre  
140 Somme Parade, Ph 343 8547

**Graze Out**

*"Honouring our brave ANZACS."*

Phone: (06) 327 4035 or Mobile: 027 292 7753  
Email: grazeoutcaterers@xtra.co.nz  
www.grazeoutcaterers.co.nz

**AGE CONCERN WHANGANUI**  
He Manaakitanga Kaumātua Aotearoa

*"Honouring our brave ANZACS."*

Contact 345 1799  
164 St Hill Street

**Pamphlet Distribution**  
Promotion Specialists Since 1977

*"Honouring our brave ANZACS."*

Ph 06 343 2010, Mobile 027 218 2010  
Email: pamphlet@xtra.co.nz

**GUTHRIES AUTO CARE**

*"Thank you to all our brave Kiwi's."*

Cnr Ridgway and Wilson Streets, Wanganui  
Phone (06) 347 9881  
Email: guthriesauto@xtra.co.nz



# ANZAC DAY



THURSDAY 25 APRIL

We will remember them.

## Residential & Commercial

- Asbestos Removal
- Roofing • Groundworks
- Drainage • Plumbing

"A tribute to those that were lost, so long ago."



27 Heads Road  
Wanganui  
06 345 5891 (24 hours)  
www.actiondrainage.co.nz

## Whakaata Māori Life was never the same for those who returned from war



The full day of Anzac programming, the 19th year of Whakaata Māori coverage, will include live crosses to the Auckland War Memorial Museum Dawn Service and Gallipoli commemorations in Turkey.

The special Anzac broadcast starting at 5.40am will include several features and expert commentary, including a tour through C Company Māori Battalion Memorial House and a closer look at Sir Āpirana Ngata, regarded as the 'father of the Māori Battalion', and the background to his seminal work, 'The Price of Citizenship'.

The broadcast will also include a visit to St Mary's Memorial Church in Tikitiki, which this year celebrates 100 years since the laying of its foundation stone and an interview with Toti Tu-haka (Ngāti Porou), who served with the NZ Navy in Korea.

We hear about the exploits of Lt Tibble of Tikitiki (Ngāti Porou, Te Whānau-a-Apanui), who won the Military Cross for bravery in Italy.

We also meet legendary kapa haka group,

Te Hokowhitu-a-Tū in Tokomaru Bay to listen to waiata associated with the 28 Māori Battalion, and hear the stories behind them.

Their official Anzac broadcast concludes at 8am to be followed by feature documentaries, films and other dedicated programming.

### ANZAC Day schedule from 8am

**8.00 AM - VAPNIERKA** – Vapnierka is a town in Ukraine. It is also where Pouramua Nihoniho, the only son of Ngāti Porou leader Pakanui Nihoniho, died.

**9.00 AM - WHĪTIKI!** – The stories of three Māori Pioneers who fought in WWI, through the eyes of their descendants.

**10.00 AM - THE COWBOYS – C COMPANY (MĀORI BATTALION)** – We follow the 2014 Te Moananui-a-Kiwa Ngarimu VC hīkoi to the Middle East and tell the big stories of the Company's exploits in WWII.

Sacrifice is a powerful word that often conjures up images of grand heroic acts, and of course, there's the ultimate sacrifice, death. It's hard to comprehend the huge numbers of New Zealand men and women who paid the ultimate price in the theatre of war. We will always be grateful.

Many thousands of other New Zealanders sacrificed too, not their lives, but at the very least their notion of a safe world. Soldiers, mechanics, radio men, nurses, airmen, sailors – the volunteers and conscripted – the list seems endless. They came home but would life ever be the same? These are the people we remember too: a group of people who, often, could never truly convey their experiences to those they loved. One of these people was Kenneth Henry Rush, 270576 2nd NZEF L/Cpl 2 AMN COY, otherwise known as our dad.

Born and raised in Whanganui, the youngest of 10, he and three of his brothers, Arthur, Stanley and Walter, served during WWII. I can't say if they went with a sense of patriotism, protection of those they loved, or the idea of a grand adventure. Dad often said it was the latter, but I don't know if that was just a deflection.

I know that for many families up and down the country, the more sordid details of war were not open for conversation. Serving men and women returned to their civilian lives and tried



Ken Rush after his final Anzac Day service



Ken Rush in uniform to fall back into the routine of relative safety and normality.

Lifelong friends were made through war, and those friends, I believe, became the people who understood some of the differences that the war experience had carved out of an individual's personality. These 'band of brothers' or sisters might not meet often, but on those occasions, you sensed they fell into lockstep, sharing stories, quietly remembering dark times and those who didn't make it. And humour too, it's a great way to ease the parts of you that struggle.

Of course, the pivotal day of the year was Anzac Day, when Dad joined his 'band of brothers' to remember. As the day approached, dad's demeanour would change a little; he became quieter, seemingly more reflective. We didn't join Dad on his pilgrimage. It felt too personal. He would spend the day with his 'brothers' and return in a frame of mind that said all was well with the world.

So, on this Anzac Day, we remember the fallen and those involved in the theatre of war, then and now. Thank you. – Louise Follett

## Physiotherapy Hand Clinic

IN GOOD HANDS



"Honouring our brave ANZACS."

Juliet Brodie

NZ REG. PHYSIO and HAND THERAPIST

Anja Edgecombe

NZ REG. OCCUPATIONAL and HAND THERAPIST

We specialise in the treatment of elbow, wrist & hand injuries & conditions.

p. 06 345 1198 • 18A Bell Street, Wanganui

## Property Brokers



"Dedicated to those who fought so bravely."

"Lest we forget"

51 Taupo Quay, Whanganui 4500

Phone 06 345 7714

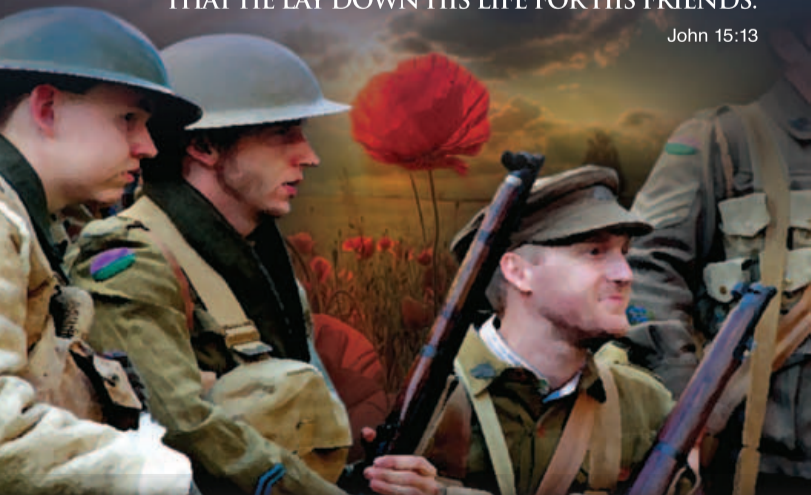
pb.co.nz

Property Brokers Ltd  
Licensed REAA 2008

## LEST WE FORGET...

GREATER LOVE HAS NO MAN THAN THIS, THAT HE LAY DOWN HIS LIFE FOR HIS FRIENDS.

John 15:13



FAITHCITYCHURCH  
Building, Bonding, Blessing

www.fcc.net.nz

## WAT'S ON building

For quality and care



"Lest we forget."

2 Pehi Street, Wanganui 4541

Telephone: 06 343 2439

mikewatsonbuilders@xtra.co.nz

www.watsonbuilding.co.nz



"Your One Stop Engineering Shop"

"Honouring our brave ANZACS."

Call us on 06 344 4108 or drop into ELITE at 437 Heads Road, Wanganui enquiries@eliteengineering.co.nz www.eliteengineering.co.nz



## BELVERDALE HOSPITAL LTD

WE OFFER SPECIALIST SERVICES IN GENERAL, ORTHOPAEDIC, E.N.T, ENDOSCOPIC & LAPAROSCOPIC SURGERY, WEIGHT LOSS SURGERY & GYNECOLOGICAL SURGERY



We are proud to support ANZAC Day

5 Campbell Street, Wanganui.  
Ph 348 1182, Fax 348 1183



## Hireit LIMITED

PHONE 06 348 7384

"Always remembered, never forgotten."

CARS • TRUCKS • TRAILERS • UTES • VANS  
12 SEATER MINI BUSES

219 Guyton St, Whanganui. 0800 131 544

E: hireitlimited@gmail.com www.hireitrentalswanganui.co.nz





# ANZAC DAY



THURSDAY 25 APRIL

We will remember them.

## New Whanganui band 'East' to play at Club Metro this Saturday and ANZAC Day



East band members, from left, front: Tom, Owen, Marty; back: Darryl  
Photo credit: Kit Edwards

If you've enjoyed the regular band that's been playing at Club Metro on Tuesday nights, mark Saturday 20 April in your calendar and head down there at 6.30 pm. And if you enjoy that, head along on ANZAC Day afternoon from 3.30 pm to hear them again.

Made up of seasoned musicians, all from Whanganui East, hence the name, the band specialises in songs from the 60s and 70s as well as originals from the band members, and has been a regular at Club Metro since before Christmas, shortly after they formed.

If you like listening, singing along, and dancing to the likes of The Eagles, Creedence Clearwater Revival, JJ Cale, Lynyrd Skynyrd, and Eric Clapton, you'll want to make the most of both these opportuni-

ties to enjoy good live music.

The band consists of Owen Hugh, well known around Whanganui for his performances in The Transistors and at open mics at The Grand, Lad's Brewery, and The Musician's Club. Originally from Scotland, he brings a wealth of fronting experience and strong vocals. He plays mandolin and electric and acoustic guitars. He says, "I really enjoy this band - it's like playing with a bunch of mates ... mates who just happen to be great musicians." That camaraderie and shared love of music

and playing means the audience will feel like they've stumbled upon a private party with an excellent jam session.

Darryl (percussion, lead and backing vocals) formed the band with Marty (bass, vocals), Owen and Tom (electric lead, rhythm guitar, backing vocals). Marty's history includes appearing in the bands Flash Back and Soul Inspiration; he is very much in demand as a bass player. Tom has been in the bands Terra Firma, The Mean Owls, and Burn the Machines, and Darryl has been in the Kaweka

Fliers (affectionally known as the Kawekas) and helps run the open mic sessions at Lads Brewery and The Grand with Rik Jones.

Expect a mix of both energetic and easy listening, the band's take on classics and some originals. Most of all, as Darryl says, "Come and dance or tap your feet - we look forward to seeing you there."

Where: Club Metro, 13 Ridgway Street, Whanganui.

When: Saturday 20 April from 6.30 pm; Thursday 25 April from 3.30 pm.

### Jackson's Flooring Design

Service and Excellence You Can Trust!

"Thank you to all our soldiers and all those who have fallen."



Corner of Wilson & Ridgway Streets

P 06 345 9059 • whanganui@flooringdesign.co.nz

### EASTSIDE DAIRY

**"We will remember them."**

- Big Ben Classic Pies 2 for \$5.00
- Cow & Gate 2 Ltr Milk 2 for \$7.80
- Scoop Ice Creams & Frozen Berry Yoghurt
- 110 Containers of loose sweets
- Rivermill Bread 3 for \$6.50
- Novelty Choc Bars \$2.00 King Size \$2.50

OPEN 7 DAYS  
5.30am - 8.00pm

Come & see our friendly team today!

63 Jones St, Wanganui East. Phone 343 9598

### G. Bristol & Sons

PLUMBERS & GASFITTERS REGISTERED DRAINLAYERS

25 Cooks St, Wanganui  
**Nigel**  
Phone Bus: (06) 345 3764  
Mobile: 0274 459 148  
email - nigandsalross@xtra.co.nz



Remembering all soldiers past & present.

363 Heads Rd, Wanganui  
P: 06 344 5065 M: 021 242 5525  
E: office@garmac.co.nz

"A day of remembrance comes once a year for the loved ones, we hold so dear."  
"Lest we forget"

**Anderson Memorials**  
Your loving memories set in stone ← 110 YEARS 1914-2024 →

462 Somme Parade, Wanganui - opposite the cemetery.  
Tel (06) 343 8708, Email: info@anderson-memorials.co.nz  
www.anderson-memorials.co.nz

"Always remembered, never forgotten."



**Cleveland Funeral Home**  
(06) 345 5522

179 Ingestre Street  
clevelandfunerals.co.nz

**THE YELLOW HOUSE** Café & Catering  
06 345 0083

Find us on Facebook

"Honouring our brave ANZACS."



Cnr Dublin & Pitt Streets 4501 Wanganui, NZ  
www.yellowhousecafe.co.nz

## ANZAC Day 2024

At the going down of the sun,  
and in the morning,  
We will remember them

**Carl Bates MP for Whanganui**

200B Victoria Avenue, Whanganui  
carl.batesmp@parliament.govt



Funded by the Parliamentary Service. Authorised by Carl Bates, Parliament Buildings, Wellington.





# ANZAC DAY



THURSDAY 25 APRIL

We will remember them.

## April 25th Anzac Day service starting later

The Whanganui Memorial Anzac Day Parade and Service will start at 7am, following the band, which will start playing at 6.30am and coinciding with a flypast. Representatives from the Māori 28th Battalion will participate before the march past.

The service will be led by the Rev Stephan van Os and Rosemary Anderson. The guest speaker will be the Mayor Andrew Tripe.

## Over 150 Collegiate staff and students lost their lives during WWI



Collegiate School students lay crosses for their fallen Old Boys



Wanganui Collegiate School Cadet Arms Training 1912



*"Dedicated to those who fought so bravely."*

Veterinary Technologies  
Agriculture and Farming  
Building and Construction

For more information call 0800-348 8215  
www.agchallenge.co.nz

## The background to ANZAC Day

The date of April 25 marks the anniversary of the landing of Australian and New Zealand soldiers – the ANZACs – on the Gallipoli Peninsula in 1915. The aim was to capture the Dardanelles and open a sea route to the Bosphorus and the Black Sea.



Thousands lost their lives during the Gallipoli campaign: 87,000 Ottoman Turks, 44,000 men from France and the British Empire, including 8,500 Australians and 2,779 New Zealanders – about one in six of those who served on Gallipoli.

They may have ended in military defeat, but for many New Zealanders then and since, the Gallipoli landings signalled that New Zealand was becoming a distinct nation, even as it fought on the other side of the world in the name of the British Empire.

The word Anzac is part of the culture of New Zealanders and Australians. People talk about the 'spirit of Anzac'; there are Anzac biscuits and the two countries' rugby league teams normally play an Anzac Day test. The word conjures up the shared heritage of two nations, but it also has a specific meaning.

ANZAC is an acronym for Australian and New Zealand Army Corps, a grouping of several divisions created early in the Great War of 1914–18. In December 1914 the Australian Imperial Force and New Zealand Expeditionary Force, both of which had just arrived in Egypt, were placed under the command of Lieutenant-General William Birdwood. Initially the term Australasian Corps was suggested for the combined force, but Austral-

ians and New Zealanders were reluctant to lose their separate identities.

No one knows who came up with the term Anzac. It is likely that Sergeant K.M. Little, a

clerk in Birdwood's headquarters, thought of it for use on a rubber stamp: 'ANZAC' was convenient shorthand and became the telegraph code word for the corps.

At the outbreak of World War 1, just over 2000 boys had attended Collegiate School since it opened in 1854 and 1200 of those between 1900 and 1914. Of those, 714 served "confirming that Wanganui Collegiate School – as it does in most things- punched well above its weight when it came to serving King and Country."

Of these 714, 156 lost their lives along with seven Masters and four domestic staff.

• Of the 1910 first XV team, 13 served, five were wounded and five killed.

• Of the 15 prefects in 1912, 13 served with five killed.

• Of the 1903 first X1 cricket team, eight served, four were wounded and three killed.

## Remembering our war heroes. Lest we forget

LEGAL ADVICE, INFORMATION ASSISTANCE & EDUCATION



COMMUNITY LEGAL ADVICE WHANGANUI

Proud to support ANZAC DAY

Drop in and see us at:

Suite 2, 236 Victoria Ave, Whanganui

Phone 348 8288

## EDMONDS

PAINTING

Waterproofing | Plastering | Specialist Coatings



"Honouring our brave ANZACS."

127A London St Wanganui

06 3488077/ 0276311608

www.edmondspainting.co.nz

## bryan stewart design

architectural residential commercial restoration



Proud to support ANZAC Day

36 Ridgway Street. Mobile 0274 434 403

Email: bryan.stewart@xtra.co.nz

"Protectors of Democracy."



Driving Miss Daisy®

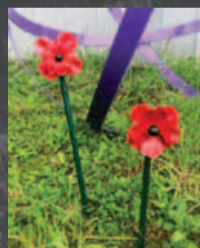
We're There For You

To make a booking or to discuss your requirements, call Clive Aim today.

Ph: (06) 347 9100 Mob: 021 503 313

Email: whanganui@drivingmissdaisy.co.nz

## IRON POPPIES FOR SALE



(Percentage of profits to the RSA)

Head to our Facebook Page for more information on purchasing or call in...



SIMPLY WROUGHT IRON LTD

"Honouring our brave ANZACS."

Ph 06 344 1460 or 021 065 7868

info@simplywroughtiron.co.nz

309 Heads Road, Wanganui



## STEPHEN LACE & ASSOCIATES LIMITED

Accounting, Business Advisory and Tax Solutions

"With great respect for the sacrifices made by all service personnel & families."



## WHANGANUI HIGH SCHOOL

www.whanganuihigh.school.nz

"Honouring our brave ANZACS."



That we might have

LEARNING INTEGRITY  
FELLOWSHIP EXCELLENCE

Purnell St, Whanganui • Phone 06 349 0178



# ANZAC DAY



THURSDAY 25 APRIL

We will remember them.

## Robyn Belton's three uncles killed in WWII

Robyn Belton, an award-winning book illustrator and author, was in Whanganui recently to open her exhibition at the Lockett Gallery and also attend the Anzac Day Service at Whanganui Collegiate School. She was brought up in Whangaehu and went to Whanganui Girls' College.

She has a close connection with the sadness of war. Her grandfathers went to WWI, and three of her uncles were killed in action in WWII, as well as a cousin of her uncles. Her own father was too young to enlist. A relative once said to her, "They are your guardian angels." She said that "was a comforting feeling. I was so aware of my grandparents' loss and the families work hard to keep their memories alive."

The uncles on her father's side, Frederick Hugh Anderson and James Pellew Anderson, along with their cousin John Hornby attended Whanganui Collegiate. Robyn has a picture of them heading off from Whangaehu to school

on a Harley Davidson in 1936. "They were the envy of all the other boys with that bike."

The uncle on her mother's side was Peter Gorbell Bignell, her mother's only brother.

All three uncles, along with John Hornby, wanted to be pilots, but James (or Jim) was colour-blind, Robyn advises, and instead joined the army. He was killed in Italy in 1944. Lance Corporal James Pellew Anderson is buried in Florence.

Flight Sergeant Peter Gorbell Bignell was killed in Yugoslavia, flying a Spitfire.

Both John and Frederick, or Eric, were killed in separate accidents over Northern Ireland and are buried in Ballyhalbert, County Down.

Back in 2008, Richard Bourne, who manages Collegiate's Museum, received an enquiry from an aviation historian from Northern Ireland, who had been trying since 1996 to find out more information about John. Richard was able to supply him with details from their Old Boys and Girls register.

Sub-Lieutenant John Samuel Hornby, Royal New Zealand Navy Volunteer Reserve, was killed on 10 October 1945, aged 21 years and one day, while flying a Supermarine Seafire 111 during a cross-country exercise.

The wreckage was found, and a fellow aviation historian crafted a 1:48 model of John's plane from it, and as a mark of appreciation for the assistance of Collegiate, they presented it to

the school. It is on display in the WCS Museum.

Eric was killed in a night flying accident at the same airfield in 1941 and is buried five along from John.

In all, 323 Old Boys and 11 staff of The Whanganui Collegiate School gave their lives in the World Wars. Each year the school has its own Anzac Day service with a cross to represent each of the fallen placed on the lawn.



Peter Bignell



James (Jim) Anderson



Frederick (Eric) Anderson

# ANZAC DAY

PARADE AND SERVICES, Thursday, 25 April 2024

All ex-service personnel, members of the RSA Women's Section, all kindred associations and members of the public are invited to assemble outside **Davis Library, Pukenamu Queen's Park, at 6.15am sharp** and parade to the Whanganui War Memorial Centre forecourt to take part in the Service of Commemoration at **7.00am**.

### REFRESHMENTS

At the conclusion of the service a warm invitation is extended to all those participating to tea and coffee on the War Memorial Centre forecourt or to partake of the traditional coffee or rum and coffee at Club Metro, Ridgway Street.

### LAYING OF WREATHS

All organisations and schools, who have traditionally laid wreaths, are invited to march in the parade. More information at: [www.whanganui.govt.nz/anzac-day](http://www.whanganui.govt.nz/anzac-day)

### OTHER COMMEMORATIVE SERVICES

#### Pākaraka Service

9.30am at Waitotara County War Memorial, Pākaraka

#### Brunswick Service

10.00am at Brunswick War Memorial opposite Brunswick Hall

#### 28th Māori Battalion Anzac Service

11.00am at Pākaitore (Moutoa Gardens)

Might've been.

I have three Uncles  
All gentle loving lads.  
One, the brother of my Mum,  
Two Brothers of my Dad.

They grew up on farms  
Went to school in Whangatui,  
A farming future seemed assured,  
But no, not to be.

All three applied to the Air Force  
Pete and Eric accepted in,  
But Jim was colour blind,  
So it was the Army for him.

Eric was killed in Ireland,  
While flying in the night.  
Pete died in Yugoslavia  
In his Spitfire kite.

Jim was lost at Florence  
A place I've never seen,  
So I never met my Uncles,  
Or will know what might've been.

Tim Anderson  
2021



Remembering the sacrifices made by the armed forces and their families.



KATE JOBLIN & CO LTD  
CHARTERED ACCOUNTANTS

Email: [kate@teamkj.co.nz](mailto:kate@teamkj.co.nz) Phone 06 348 7000



WHANGANUI DISTRICT COUNCIL  
Te Kaunihera a Rohe o Whanganui



## Castlecliff Golf Club is thriving with big events at the moment



Castlecliff Golf Club

The 54-hole Easter Tournament was a great success as it builds towards the centenary year of the golf club. Easter is always a busy time at the Castlecliff Golf Club, with the big 90 Hole Matchplay tournament being held over three days (1952 to 2007). The new format is slightly different with it being played in pairs with three different formats (fourball, ambrase and foursomes) over the three days. Splitting the field into two divisions based on combined handicaps. This year's winners of Division 1: Lewis Ibell + Shane Bengé. Winners of Division 2: Ken Read + Winnie Clark.

The week after, the clubs Kiwispan NZ Mixed Shootouts took place: this is another mixed event with two divisions. There were 70 players trying to qualify for 19 spots in each division. All 19 players tee off the first and the worst score on each hole gets knocked out of the competition until there is one person left standing. If there is a tie for the worst score on each hole, then there is a putt or chip off with the furthest away out. Winner of Division 1: Matthew Carroll, Carl Murphy runner up. Winner of Division 2: Barbara Cornor, Paddy Edmonds runner up after a chip off on the last.

brings almost 200 players to Wanganui, and in the first week of December, the club will host the NZ National Vets tournament. This December tournament is proving to be popular with a waitlist for the ladies' competition, and the men's competition isn't far away from being full already. Castlecliff Golf club is a favourite of the NZ Vets with its easy walking course, hospitality, and professionalism in running these big events. Castlecliff hosted this event in 2015 which was a great success and had some local winners.

The clubs centenary is being held on the first weekend of May 2025, details of the actual programme for the weekend are still being finalized, but events will involve the past and present members. Contact Rodney in the office, 06 344 4554 if you would like more information.

## Whanganui duo off to Halberg Games



Natalie Johnston and Max Walsh

A small but enthusiastic team has been named to represent Whanganui at the 2024 Halberg Games from 19-21 April.

The national sports tournament spans three days and is exclusively open to young athletes aged 8-21 with a physical disability or visual impairment.

Whanganui's Max Walsh, 21, and Natalie Johnston, 16, from Waverley, will compete at the annual games at King's College in Ōtāhuhu, Auckland.

It will be the second time that Whanganui has sent a team to the Games – the first, made up of Mason Pye and Theo Franklin-Browne, competed in 2023 with Theo winning the ISPS Handa Moment of the Games award.

Sport Whanganui Diversity & Inclusion Lead Sarah Craig says, "We are so excited to have Max and Natalie heading up to represent us in Auckland. The Halberg Games are a thrilling experience for our athletes and their whānau, with opportunities to challenge themselves in competition, try a range of sports and make new friends."

Both Max and Natalie have been to the Games before but are excited to represent Whanganui for the first time with pride.

"I'm looking forward to testing myself and being part of a different, smaller team," said Natalie, who at-

tends Arahunga School and has previously been to the Games as part of the Taranaki team.

"We'll be sure to make lots of noise during the opening ceremony!"

Sport Whanganui provided hoodies for Max and Natalie, and the team is grateful to the Bukholt Sport Support fund who have supported the team with registration costs to attend the Games. Sarah's aim is to continue to grow local participation in events like the Halberg Games, by partnering with sports clubs to facilitate adaptive sessions for young people with disabilities.

"It's about being able to try different things in a supportive environment. The Games have something for everybody and not only do the athletes get a lot out of it, the larger community of parents and whānau get to come together and connect with each other."

"We would love to grow our numbers and eventually have a group that can meet and get to know each other. The benefits are huge and it's all about working together to provide more inclusive opportunities for young people to be active."

People who are interested in taking part in future Games can contact Sarah Craig at 027 282 6717. More information about the Games can be found at [halberg.co.nz/halberg-games/](http://halberg.co.nz/halberg-games/)

## Ziva Bunker breaking Whanganui records in the pool

Ziva Bunker was back in the swim action at the recent South Island junior championships held at the Richmond Aquatic Centre in Nelson.

Bunker, 11, coached by former Olympian Richard Gheel, competed in eight events over the two-day meet that attracted swim teams throughout the South Island, with Bunker being the only non-South Island competitor.

Due to the meet being the South Island junior champs, Bunker was eligible to take any podium spots however she didn't let this effect her perfor-

mance achieving eight short course (25 metre pool) personal best times and setting four Whanganui records along the way.

Bunker took a further 1.3 seconds of her own 100 Individual Medley record and reduced her 100 Backstroke record by .5 of a second.

In the 50 backstroke Bunker broke Georgia Abrahams 2017 record by .7 of a second, clocking 34.11 and reduced the 2016 200 backstroke record set by Cheyenne Nightingale by .8 of a second lowering the mark to 2.37.81.

Bunker was happy with all her swims at the event and is looking forward to continuing her training with the Whanganui Swim Team under the eye of Gheel, saying, "Training has been going well and I am looking forward to competing over the next few winter months before taking my break."

Thanks to NZCT, David Jones Motors and Haymans Industries for supporting the Whanganui Swim Team as well as a shout out to coach Richard for keeping the team motivated as we move into winter.

"I'd also like to thank Shaun Hogan OsteoPlus Whanganui for working with me," Bunker added.

The club is also hosting the North Island Chartered Clubs tournament in November which

## Pigeon racing results

The St Johns Club Wanganui Pigeon Racing Adjunct held its second race of the 2024 season, with a race from Waitara. The race attracted 99 pigeons from six flyers. The winning pigeon from the loft of Heather Verstraeten, of Whanganui, covered the 125.36km in 1hr 41min 26sec to record an average speed of 1235.95 meters per minute (mpm) or 74.18kph. The pigeons experienced mixed weather conditions on their flights to Whanganui and Marton (152.33 km).

**Results were:** Heather Verstraeten of Tongariro Loft (Whanganui) 1235.95mpm or 74.18kph; Alois Verstraeten of Tongariro Loft (Whanganui) 1171.29mpm or 70.26kph.; Shane Gudopp (Marton) 1108.14mpm or 66.49kph; Jim Pullins (Whanganui) 1095.15mpm or 65.71kph; Benedict Galandi (Whanganui) 1039.89mpm or 62.39kph; B and A Fairweather (Whanganui) 1036.27mpm or 62.18kph



Ziva Bunker



## Using end of the summer vegetables

By Gina Guigou Summer vegetables are slowing down, so it is time to make the most out of them. We have been making my version of Shakshuka, a Mexican dish of eggs cooked in a tasty tomato-based dish, with a European slant. This recipe is easy to make for 1 to 10; the qual-

ities given is for 2 portions.

- 1 Tbsp oil
- 1 medium red onion – finely sliced
- 2 medium courgettes - cut in 1/2 lengthwise, then sliced
- 2 garlic cloves
- 1 1/2 - 2 cups of diced tomatoes - you could use a can of diced tomatoes
- 1 red chilli – optional, finely sliced and depending on how much heat you like will play a part in whether you add the seeds, and how much of the chilli you will include.
- Small handful of basil or parsley- chopped
- 2- 4 Eggs
- Block of Halloumi cheese cut into 4 slices – Tofu could be used instead



Shakshuka

Crusty bread – French stick or Sour Bros bread.

In a fry pan, add the oil and the red onion, cook on medium heat until the onion starts to soften, then add the crushed garlic, cook for 1 minute, then add the courgettes, tomatoes, chilli, and if your tomatoes are little dry, add some water. Season with salt and pepper. Remember to taste the mixture once the base is cooked to ensure you have seasoned correctly.

Cook until the courgettes are soft, and you should

now have a wet vegetable mixture, in which you are going to poach your eggs and halloumi in. Before adding the eggs, it is very important to make sure you have enough liquid to surround the eggs. Stir in the basil or parsley.

Make a deep well in the vegetable base around the edges like a clock, one at 12, 3, 6 and 9. Then between the eggs place the slices of halloumi. Cook for 5 to 10 minutes until the egg white has set and the yolk is starting to

thicken, but not set. Serve with a large slice of crusty bread.

Optional extras - You can add – capsicums, eggplants and different spices like paprika, cumin and coriander; plus if needing to make the dish a bit more filling, add a can of beans, red kidney or chilli beans.

If adding different spices, add when adding the garlic to help release the flavours. Beans, when the tomatoes are added, vegetable with the courgettes.

## Council's new approach to housing shortage

The Whanganui District Council is planning a business case for a standalone social housing entity to drive growth in Whanganui's housing stock.

Councillor Kate Joblin says, "There were at least 318 individuals on three MSD housing registers in September 2023 – an increase of 231% from September 2019." Rental affordability is worsening, with an average weekly rent price of \$433. "This is growing faster than the rest of the country. In terms of affordability Whanganui ranks 45th out of 66 territorial authorities."

Whanganui's population is projected to increase from 48,700 in 2022 to 52,981 by 2034 and nationally the older population is expected to increase from 21.5% to 30% by 2048. "Based on current data, we're going to need at least



1,000 new dwellings over the next ten years to close the gaps," advises Mayor Andrew Tripe.

Thus the interest in a separate social housing entity. Kate explains, "A standalone entity would have a dedicated board with the right capability and would become a Community Housing Provider." This would enable it to access income-related rent subsidies and operation funding from the Min-

istry of Housing and Urban Development, as well private equity funding or partnership opportunities.

The Mayor adds, "A mixed-housing approach could include various types of affordable social housing, full market price home ownership, first home assisted ownership or rent-to-own programmes, pensioner housing, built-to-rent exemplars, long-term rentals and infill or sub-

division development."

Currently the council has 276 units over 16 complexes used for pensioner housing and needs to double the number to 470 units by 2050. However the current pensioner housing stock is all past or nearing the end of its life.

The next stage is to develop a full business case and consult with the community regarding the transfer of council assets to support the Trust.

**WE ARE OVERSTOCKED!**  
**BUT WE NEVER STOP BUYING!**

Come and see our huge selection and great prices in-store now!

**MOVING HOUSE? SELLING? RENOVATING?**

**DRAWERS**

**TABLES & CHAIRS**

**BEDS**

**DESKS**

**FRIDGES & FREEZERS**

54 Maria Pl Extn, WANGANUI  
Ph 06 345 3154 • Open 6 days • www.ginza.co.nz

Use your Grey Power Discount Here

Mon-Fri, 9am-5pm • Sat, 9.30am-2pm  
Email: ginza2@xtra.co.nz

Your Local One Stop Furniture Shop • WINZ quotes, Layby and Trade-Ins welcome

Rachel  
Brandon

Designing Interiors

- Interior / Exterior colour schemes
- Furniture revival
- Kitchen / Bathroom layouts
- Fabric / Wallpaper suppliers
- Furniture placement
- Renovations / New Builds
- Residential / Commercial

027 207 2798

rachel@rbdi.co.nz    www.rbdi.co.nz

## SELF STORAGE

**SELF STORAGE**  
Harcourts Whanganui

**KAIKOKOPU RD**  
**WHANGANUI**

NOW MANAGED BY **Harcourts Whanganui**  
Rivercity Real Estate Licensed REAA 2008

**SELF STORAGE UNITS.**

Sizes from:  
5.1m<sup>3</sup> to 48.6m<sup>3</sup>

Prices from  
**\$9 per week**

Phone  
**06 349 0883**

**GET COMMERCIAL EMPLOYMENT PROPERTY WILLS & TRUSTS EXPERTISE LAW**

MOORE LAW

Lawyers & Conveyancers

When it comes to buying or selling a property, you should always get Moore.

We are proud to be a family firm and are proud to support Whanganui families.

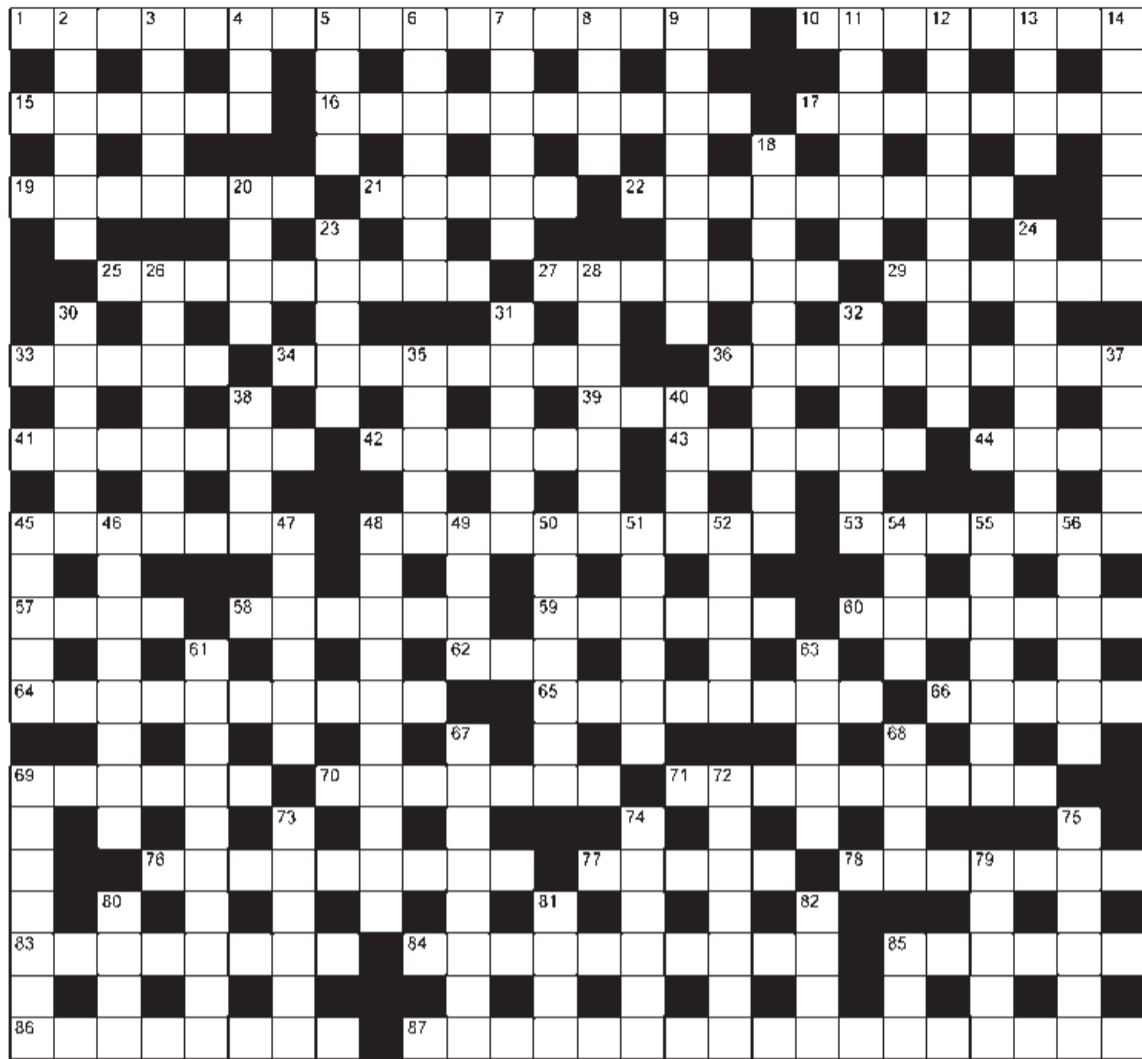
Talk to Rob or Richard at Moore Law today for expert, friendly advice.

Talk to the team today  
Tel. (06) 349 0012  
www.moorelaw.co.nz



Jumbo crossword

- ACROSS**  
 1 Battle with the utmost ferocity (5,5,3,4)  
 10 South American snake (8)  
 15 Thwart (6)  
 16 One's finest clothes (6,4)  
 17 Performs surgery (8)  
 19 Place of study or training (7)  
 21 Discourage (5)  
 22 Solve (6,3)  
 25 Person closely resembling another (9)  
 27 School (7)  
 29 Radio crackle (6)  
 33 Entire range (5)  
 34 Reduced in strength (8)  
 36 Deceitful or dishonest (10)  
 39 Intestine (3)  
 41 Arsonist (7)  
 42 Saltwater solution (6)  
 43 Woke (6)  
 44 Matured (4)  
 45 Objection (7)  
 48 Stereotype (10)  
 53 Badly behaved (7)  
 57 Shove (4)  
 58 Tusked marine animal (6)  
 59 American state (6)  
 60 Nightclub heavy (7)  
 62 Black sealant (3)  
 64 Inflammation of the larynx (10)  
 65 Meant (8)
- 66 Closes (5)  
 69 Din (6)  
 70 Absconder (7)  
 71 Boxers (9)  
 76 Table ball game (9)  
 77 Fissure (5)  
 78 Natural polish (7)  
 83 Waste from ore-crushing plant (8)  
 84 Go against, as of rules and laws (10)  
 85 Nuclear (6)  
 86 Opera text (8)  
 87 Show no emotion, refrain from smiling (4,1,8,4)
- DOWN**  
 2 Unbroken (6)  
 3 Muggy (5)  
 4 Dead heat (3)  
 5 Throw out (4)  
 6 Nag (7)  
 7 Approached (6)  
 8 Calligrapher's tips (4)  
 9 Gut feeling (8)  
 11 Male relation (6)  
 12 Indirect and windy (10)  
 13 Short letter (4)  
 14 A deadly poison (7)  
 18 Deception, ploy (10)  
 20 Create (4)  
 23 Armada (5)  
 24 Potency (8)  
 26 Luxurious (7)  
 28 Ire (7)  
 30 Sword (6)  
 31 Imprudent (6)  
 32 Large serving dish (6)
- 35 Army colour (5)  
 37 Hot alcoholic drink (5)  
 38 Yours and mine (4)  
 40 Threesome (4)  
 45 Eye centre (5)  
 46 Block (8)  
 47 Calamitous (6)  
 48 Fussy (10)  
 49 Essence (4)  
 50 Egg-shaped musical instrument (7)  
 51 Red suit (6)  
 52 Compare (5)  
 54 Declare as true (4)  
 55 Noughts (anag)(7)  
 56 Pact (6)  
 61 Vacillating, irresolute (10)  
 63 Lukewarm (5)  
 67 Cupboard for clothes (8)  
 68 Spouse (4)  
 69 Concert by soloist (7)  
 72 Ill-defined (7)  
 73 Insult (6)  
 74 Snaps (6)  
 75 Psychopath (6)  
 79 Satirical parody (5)  
 80 Branch (4)  
 81 Footfall (4)  
 82 Abominable Snowman (4)  
 85 Tree (3)



"Remembering the sacrifices made by the armed forces and their families"



We do the *home* work for you.

Ngaire Eyers Simms M 021 033 7711 P 06 349 0883

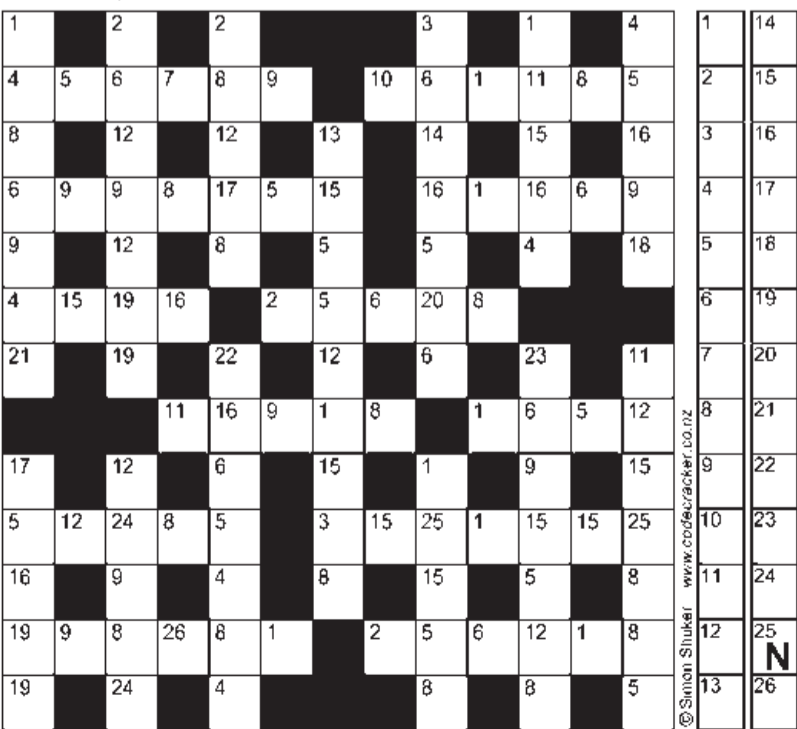
Hans Vanderschantz M 027 245 3532 P 06 349 0883

Harcourts Whanganui Licensed Agent REAA 2008

Harcourts

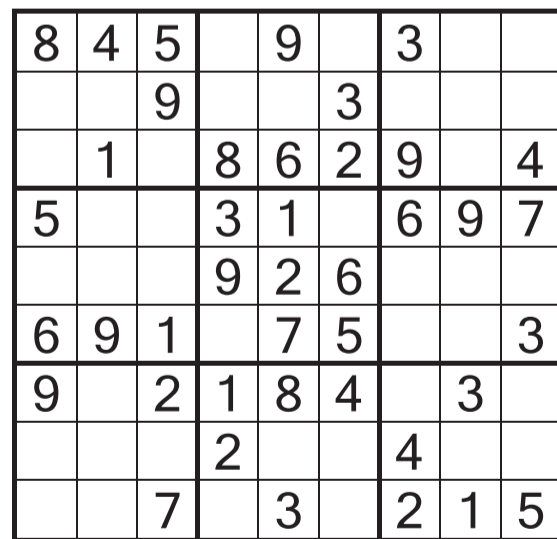
SIMON SHUKER'S CODE-CRACKER Extra 805

EACH number in our Code-Cracker grid represents a different letter of the alphabet. For example, today 25 represents N, so fill in N every time the figure 25 appears. You have one letter in the control grid to start you off. Enter it in the appropriate squares in the main grid and solve the starter word. Fill in other squares in the main and control grids with the found letters and look for the next word. Follow the word trail through the puzzle to its completion. [www.codecracker.co.nz](http://www.codecracker.co.nz)



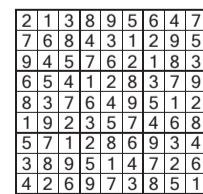
A B C D E F G H I J K L M N O P Q R S T U V W X Y Z

Sudoku



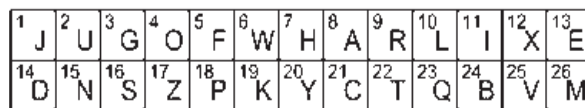
EASY

Previous solution



Fill the grid so that every column, every row and every 3x3 box contains the digits 1 to 9.

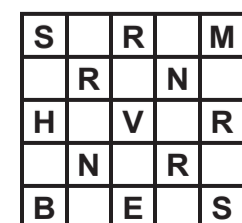
Previous solution



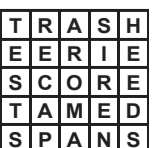
Previous crossword solution

**ACROSS:** 1 Asked, 4 Wash one's hands of, 14 Scope, 15 Argue, 16 Vernacular, 17 Catch, 19 Apt, 20 Battery, 21 Tiredness, 22 Bowler, 25 Rain gauge, 27 Helium, 28 Jam jar, 33 Postscript, 35 Lap, 36 Belief, 37 Scab, 39 Lee, 41 Utensil, 42 Bounce, 43 Bamboozle, 44 Slyly, 45 Premiere, 50 Is, 51 Asterisk, 55 Dross, 58 Rationale, 59 Offset, 60 Complex, 61 Gel, 63 Lard, 64 Levels, 65 Axe, 66 Recognises, 68 Pullet, 69 Recite, 71 Impartial, 76 Shears, 77 Applauded, 79 Outlook, 81 Tun, 84 Igloo, 85 Statistics, 86 Snoop, 87 Cuffs, 88 Deliver the goods, 89 X-rays.  
**DOWN:** 2 Stream, 3 Erupt, 5 Aces, 6 Hanging, 7 Nickel, 8 Salon, 9 Aerosol, 10 Dice, 11 Option, 12 Solar, 13 Settler, 14 Shellac, 18 Transcribe, 23 Mania, 24 Lullaby, 26 Antonym, 27 Hapless, 29 Jacuzzi, 30 Jotter, 31 Blunt, 32 Dermis, 34 Toot, 36 Beryl, 38 Bleak, 40 Bore, 45 Peril, 46 Enthral, 47 Iron, 48 Reader, 49 Tongs, 50 Isolate, 52 Thoughtful, 53 Replica, 54 Sweden, 55 Deleted, 56 Offer, 57 Gear, 62 Ocean, 67 Genesis, 68 Protect, 70 Impasse, 72 Maestro, 73 Grille, 74 Pumice, 75 Colony, 76 Sniff, 78 Least, 80 Liner, 82 Gobi, 83 Acid.

5x5



Insert the missing letters to complete ten words — five across the grid and five down. More than one solution may be possible.



## LETTERS TO THE EDITOR

**Trevor Colway remembered**

Dear editor,

How lovely it has been to read newspaper articles about Trevor Colway. A fascinating lady.

After WWII Trevor Hunter had a Dancing studio above the Royal Willow Tea Rooms in Victoria Avenue, near where the Chemist Warehouse is today. As a Primary school girl I learnt dancing there and my mother (Mrs Gwladys Hogg) played the piano for some of the classes. We had been told of Trevor Hunter's bravery and flying during the War on the other side of the world.

As a child I was fascinated by the fact that this lovely lady, Trevor Hunter, taught dancing, but had a masculine name and had been involved in masculine activities during the war.

I have enjoyed reading more about her life experiences and achievements as I left Wanganui when I left Secondary school. Although I later returned to Whanganui our paths did not cross.

A lovely lady to remember and certainly deserving of the memories and honours now bestowed upon her.

Thank you.

Elspeth Shand (nee Hogg).

**Thanks for helpers, after fall**

Dear Editor,

On Easter Monday late afternoon, I had a nasty fall whilst walking to the cemetery. (On this occasion I cannot blame the footpath as I was on the very smooth shared cycleway at the time!!) I would like to express my grateful thanks to the two cyclists who kindly stopped to offer assistance, and a car that passed by, but returned to the scene!

The driver (a lovely Māori girl, her partner and baby) then drove me home; at the time, I was not in a fit state to ask their names and addresses, so hopefully they all read the "Good News" paper and know how much I appreciated their help that day.

- Fi M Donne

**WHAT'S ON**

IN THE COMMUNITY

**Alcoholics Anonymous**

Phone 0800 229 6757. If you have a drinking problem maybe we can help. AA Wanganui area meeting list: Sunday, St Johns Lutheran Church Hall, 51 Liverpool Street, Wanganui, 9am; Monday, Friendship Hall, Morris Street, Marton, 7.30pm; Tuesday, St Johns Lutheran Church Hall, 51 Liverpool Street, Wanganui, 12.30pm; Wednesday, St Luke's Church Hall, 34 Manuka Street, Castlecliff, 7.30pm; Thursday, St Johns Lutheran Church Hall, 51 Liverpool Street, Wanganui, 7.30pm; Al-Anon (family support) Thursday, Quaker Meeting House, 256 Wicksteed St, 7.30pm. Friday, Gonville Library meeting room, 12.30pm. Ph 0508 425 266.

**Alzheimers Whanganui Inc. Mother's Day High Tea**

Sunday 12th May. Wanganui Golf Club, 14 Clarkson Road, Whanganui - Doors open 2:15pm, \$35.00 per ticket, bookings essential. Tickets purchased from office 4/236 Victoria Avenue, Whanganui 4500. Phone to book (06) 345-8833 or email admin@alzheimerswhanganui.org.nz

**Do You Have Questions About the Bible?**

Come and join us at the Christadelphian Hall on Tuesday night at 7:30pm for Bible-based discussion and a cup of tea. All are most welcome. 138 Great North Road. Email: wanganui.ecclesia@outlook.co.nz / www.thisisyourbible.com

**ESOL Home Tutors**

Are you interested in other cultures and helping new migrants and are you keen to teach English as a volunteer tutor? English Language Partners Whanganui is running a free volunteer ESOL Home Tutor Training course on Monday and Wednesday afternoons, beginning on Wednesday 15th May from 1.00pm to 4.00pm and running until 12th June. Text Jane for details on 027-257-7776 or email whanganui@englishlanguage.org.nz

**Free and Easy computing at UCOL**

This free course covers all the Micro-soft topics, Word, Excel, PowerPoint, Publisher and Access. The course is on a Monday and Tuesday, 9.00am to 11.00am and 5.00pm to 7.00pm, both days. Add computing to your CV. Telephone 06-965-3800 or visit the campus.

**Jigsaw Exchange**

Next meeting Saturday 27th April from 10am to 11.30am. Held at Central Baptist Church in Wicksteed Street. No limits, no cost, but donations gratefully accepted. Contact Jack 343-1404 or 021-0277-5391 or email rega21@xtra.co.nz

**MIST Mental illness Survivors Team**

203 Victoria Ave, open 9.30am to 3.30pm Monday to Friday. Closed statutory holidays. A place to share activities and socialise. We offer activities, acceptance and support.

**Repair Cafe Whanganui official opening**

Sat 27 April, Harrison St Church Hall, 11am-1pm. Plastic and wooden items, musical instruments, clothes, soft toys, sewing machines, ceramics, costume jewellery. Learn about repairing. Two items per person max. Donation for successful repair, please. Buy refreshments while you wait. Enquiries 0274-481-581 or whanganuirepaircafe@gmail.com

**Theosophy Whanganui**

Usually held 2nd Sunday Monthly. Where: Community Arts Centre, back river entrance in the Awa Room. When: 2pm What: Presentation with respectful discussion and communication. Purpose: No dogma, 'Do no harm', explore ancient wisdom to develop self with the universe. Email: theosophywhanganui@gmail.com

**U3A Whanganui Incorporated**

The second of our Autumn Lecture series will be held at the Josephite Retreat Centre from 10:00am on Monday 22nd April. In this presentation internationally renowned Kiwi Archaeologist Tom Higham will discuss how DNA analysis has expanded our understanding of the out of Africa theory whilst German paleoclimatologist Madelaine Böhme adds another layer of complexity to the history of ancient human migration. Entry cost of \$5.00.

**Wanganui Bird Show and Sale**

The Wanganui Bird Club are hosting a Bird Show and Sale on Saturday 20th April at the Whanganui Girls' College Hall. Doors open at 9am to 3pm. There are lots of birds for sale plus bird accessories, Colouring competition, sausage sizzle, pet bird section where you can bring along your pet bird. Prizes to be won.

**Whanganui Film Society**

Monday 22 April 7pm: Memories of Murder (Bong Joon-ho | South Korea | 2003 | R16) Based on real-life serial killings that rocked a rural Korean community in the 80s, Bong Joon-ho's crime thriller upends the conventions of the policer with genre-defying results. Davis Theatre, Watt St. Members only. Join at nzfilmsociety.org.nz/whanganui/html

**Whanganui Spiritual & Awareness Centre**

Meetings 7pm Sundays, Quaker Meeting Rooms, 256 Wicksteed St. Local or visiting speakers or mediums sharing their spiritual gifts. Join our healing circle, take a raffle, stay for supper and chat. Everyone is welcome. Koha appreciated. See our Facebook page for details. Ph: 027-697-6308.

**What's On Notices**

What's On in the Community notices are \$10 for up to 50 words. Contact River City Press, 52 Ingestre St, by Tuesday 1pm to place your advertisement.

**River City Press**

Proud to be locally owned and operated

Phone 345 3666.

Email: rivercitypress@xtra.co.nz

Your community newspaper, part of the independent community newspaper network.

www.cna.org.nz

**Recent Bereavements**

Sadly passed away recently...

**Kevin William Ralph BOULD,**

on 11 April 2024, aged 82 years.

**Allan Costley JONES,**

on 10 April 2024, aged 85 years.

**Audrey Monica POWELL,**

on 15 April 2024, aged 95 years.

**Edward (Teddy) WILSON,**

on 12 April 2024, aged 76 years.

**Copyright:**

River City Press produces and/or publishes advertisements strictly on the basis that River City Press is entitled to and owns the copyright in the advertisement so far as the copyright relates to publication or reproduction for publication in any newspaper, magazine or similar periodical or to broadcasting of the advertisement.

**Cleveland Funeral Home**  
(06) 345 5522

Pre-Planning  
Call or Visit For Your  
Free Pre-Planning Pack

179 Ingestre Street | clevelandfunerals.co.nz

**DEMPSEY & FORREST**  
FUNERAL DIRECTORS

Arrange a visit today and meet our friendly team.  
We are here to help you in your time of need.  
208 Guyton St Phone 06 349 0202 any time  
www.dempseyandforrest.co.nz

**Anderson Memorials**  
Your loving memories set in stone

**HEADSTONES**  
Family owned for since 1914

For all monumental work in all cemeteries  
Check out our website below

462 Somme Parade, Whanganui - opposite the cemetery  
Tel (06) 343 8708, Email: info@anderson-memorials.co.nz  
Showrooms in Feilding & Palmerston North  
www.anderson-memorials.co.nz

All Kiwis deserve a great meal.  
But only Whanganui has Jamie's Angels.

Perfect, personalised meals on a plate.  
Delivered daily throughout Whanganui.

Call today to find out more.

Freephone: 0800 526 435

**JAMIE'S ANGELS**  
Freshly Cooked Meals  
For The Elderly

Email: jamiesangelsnz@gmail.com W: jamiesangels.co.nz

- ACC registered Vendor -

## TRADES AND SERVICES

100% locally owned



**Furniture removals door to door  
National and international**

390 Heads Rd, P.O. Box 5042 Wanganui  
Phone: 06 344 7002 Email: darrell@hoskincarriers.co.nz



**Elevate  
Tree Service**

- Tree felling
- Tree removals
- Pruning
- Digger Services
- Log Slabbing
- Chipping

022 355 4894  
david.beatson@hotmail.com

**KEENE BUILDS**  
Reuben Keene Qualified Builder



fb @keenebuildswhanganui  
0204 190 4693 reuben.renouf@gmail.com

### FOR SALE

**BLINDS** - Roller & Venetians to order. Free measure and quote. Strath Davis Furniture & Flooring, Ph (06) 345-0883. **NEW** books available at River City Press, 52 Ingestre St. "From the Sea to the Mountain"; "Whimsical Tales of Old Wanganui"; "More Whimsical Tales of Old Wanganui"; "My Life - Annasophia". **FIVE** x whitefaced yearling steers well marked, \$700 each. Phone or text 027-340-9974. **TOP-VALUE** great range of \$6.00 native plants and grasses including Black Mondo, looking superb for landscaping now. Two varieties of Nandina; Domestica and Gulf Stream, both low maintenance and colourful. Parnells Quality Tree and Shrub Nursery, 102 Fox Road, Springvale, Wanganui. Phone 344-6645, well worth an inspection, with competitive prices and sound advice. Est. 1895.

### PERSONAL

**FREE** confidential health checks, STI and HIV screening. Whanganui Hospital. Phone for consultation 348-1775/021-323-077.

### FOR FREE

**PIANO**, older style. Free for pick-up. Ph or txt 027-814-2169

### VEHICLES WANTED

**WANTED**

ANY Cars Wanted Dead or Alive



**TOP CASH PAID**

**\$100 - \$1,000**  
for small car  
**\$100 - \$7,000**  
for 4x4 UTEs  
Vans, 4WD,  
Trucks, Buses

Ph Today **021 032 3006**  
Text: **022 535 0807**

**We will  
beat any  
prices in  
the market  
by 10%**



### STORAGE

**STORAGE SPACE  
AVAILABLE**

We have 50-1000 square metres of lockable storage available in Whanganui. Please contact Bernard Reuters on 0274 495 125 or reuters@devonhomes.co.nz for further details.

**River  
City  
Press**

Phone  
**345 3666.**  
Email:  
rivercitypress@  
xtra.co.nz

**vega**

Get Your Best Mortgage Here

**Natalie Sara**  
Residential & Commercial  
Mortgage Adviser

022 164 1566  
natalie@vegaland.co.nz  
www.vegaland.co.nz



**MONKEY BUSINESS**  
Tree Care

**Eddie White**  
ARBORIST

mbtreecarenz@gmail.com  
027 385 6597

www.monkeybusinessnz.com

### OUR SERVICES

- pruning
- tree removal
- hedge trimming
- reductions
- storm damage maintenance
- planting

**Get in touch for  
a FREE quote!**

## REAL ESTATE

### Time to Sell?

- FREE market appraisal
- FREE marketing package
- No up front costs

Effective, Efficient Marketing  
of your property = **SOLD**

Call Marion Farr today to  
discuss your real estate needs.

Email: marionfarr@xtra.co.nz

Please  
call  
**Marion Farr**  
on  
**021 572 033**



**THE  
WATSONS**  
ROSS WATSON REAL ESTATE MIRENZ  
Licenced under the Real Estate Act 2008

### SITUATIONS VACANT

**GET** paid to exercise! Pamphlet Distribution require reliable runners to deliver RCP and brochures each week. Phone Bubs on 343-2010 or 027-218-2010.

### HEALTH & BEAUTY

**JADE** Traditional Thai Massage. Excellent massage at reasonable prices. 64 Guyton Street. Phone 348-8466 for an appointment.  
**JAX ensomme** Qualified stylists offering professional hairdressing and gold card services. Book online or call (06) 343-1225.

### LAWN MOWING

**LAWNS NEED  
MOWING?**  
Cutting Edge Lawns  
Keeping Lawns  
& Costs Down!

- Locally owned & operated
- Pensioner discounts
- WINZ Quotes
- Ride on work

**Wayne Bishop**  
Phone  
**027 555 3074**

### AFFORDABLE LAWNMOWING

Great quality service,  
great price.  
Pensioner rates available.  
Call Paul on  
**021 245 4999**

## PUBLIC NOTICES



WHANGANUI  
DISTRICT COUNCIL  
Te Kaunihera a Rohe o Whanganui

## Anzac Day 2024 opening hours

### Thursday, 25 April 2024

These are the opening hours for Whanganui District Council facilities and services for the Anzac Day public holiday on **Thursday, 25 April 2024**.

We can be contacted at any time on 06 349 0001. This number is monitored 24/7 including for urgent enquiries.

You can also report non-urgent issues by using the free Antenno app – download at: [www.whanganui.govt.nz/antenno](http://www.whanganui.govt.nz/antenno)

<b>Council Customer Services, 101 Guyton Street</b>	CLOSED
<b>Council Infrastructure Office, 179 St Hill Street</b>	CLOSED
<b>Whanganui &amp; Partners, Innovation Quarter, 179 St Hill Street</b>	CLOSED
<b>Whanganui isite Visitor Information Centre, Taupo Quay</b>	OPEN 9.00am - 3.00pm
<b>Whanganui Regional Museum, 4 Watt Street</b>	OPEN 10.00am - 4.30pm entry is free Archives: By appointment only, email archives@wrm.org.nz
<b>Royal Whanganui Opera House Box Office, St Hill Street</b>	CLOSED
<b>Whanganui War Memorial Centre, Watt Street</b>	OPEN (during Anzac Day service)
<b>Cooks Gardens, St Hill Street</b>	Track and field OPEN Velodrome CLOSED (unless pre-booked) Events Centre CLOSED
<b>Whanganui District and community libraries</b>	CLOSED
<b>New Zealand Glassworks, Rutland Street</b>	CLOSED
<b>Durie Hill Elevator, Anzac Parade</b>	OPEN 10.00am - 5.00pm
<b>Splash Centre, Springvale Park</b>	OPEN 12 noon - 6.00pm
<b>Whanganui Airport terminal and cafe, Airport Road</b>	OPEN one hour before departures and 30 minutes before arrivals for scheduled Air Chathams flights.  For all Air Chathams enquiries, call 0800 580 127
<b>Animal Pound, Airport Road</b>	CLOSED but you can still call the animal management team on 06 349 0001 for all animal- related enquiries.  Normal hours resume on Friday, 26 April (open 11.00am- 1.00pm)
<b>Whanganui Resource Recovery Centre, Maria Place</b>	OPEN 10.00am - 3.00pm (drive-in area)  The front part of the centre is open 24/7 for dropping off glass, paper/cardboard, cans and recyclable plastics 1, 2, and 5

[www.whanganui.govt.nz](http://www.whanganui.govt.nz)

### WEBSITE DESIGN

**GET** a stunning, contemporary website at minimum cost, or give your old one a strategic revamp. Phone Peter on 020-4161-3506 or email peter@toucan.media.

### FIREWOOD FOR SALE

**AFFORDABLE** firewood starting from \$50 a cubic metre for sale. Please phone us on (06) 343-8466.

### FRUIT & PRODUCE

**FRESH** vegetables available, open Thursdays, Fridays. Laugeson's Gardens, Westmere Road.



# NEED HELP?

Emergency.....111  
 City Mission/Foodbank .....345 2139  
 Women's Refuge Wanganui ..... 344 2204



RIVER CITY PRESS LTD  
 CLOSEST TO OUR COMMUNITY

# CLASSIFIEDS

52 Ingestre St Ph 345 3666  
 Email: rivercitypress@xtra.co.nz

Nominate someone you think is deserving of our **Bouquet of the Week!**



Email or facebook message us with your nomination and reason why they deserve to win!  
 email: rivercitypress@xtra.co.nz  
 facebook: River City Press Wanganui



## PUBLIC NOTICES / ENTERTAINMENT

Would you know what to do if someone is injured?

**+ First Aid Training**

Whanganui:  
**Mon 6 May or Thur 6 June**  
 N.B. Businesses are welcome to attend our Public Classes, all NZQA Accredited!

**Electrical Workers EWRB Competency Training**

Thursday 23 May  
 Book online at: www.links-ltd.co.nz



**LINKS**  
 We train, you gain!



Freephone: 0508 487 246  
 training@links-ltd.co.nz  
 www.links-ltd.co.nz



**FEATURE RACEDAY**  
 (ex Hawkes Bay Meeting)  
**Saturday 27th April**  
 Racing from 12.10pm - 4.12pm  
**FREE entry & parking**  
**Bars and rooms open from 11.00am**



Ph 345 3968  
 wjc.co.nz



**BUYING and SELLING USED FURNITURE**



Phone 345 3154  
 54 Maria Place Extn  
 Email: ginza2@xtra.co.nz

**PSYCHIC CONSULTANT**

I am available to help with your past, present and future as well as important decisions. Yes! Of course I'm still working! Sandra Singleton. Numerologist Wanganui. 06-345-3803.

**WANTED TO BUY**

GINZA. Always buying, always selling. Good used furniture, antiques, China and collectables. Call Ginza 345-3154

RANGES + dishwashers in reasonable condition etc. Can pick up. Please Ph: 344-7503 or 021-0823-6126.

**LOST PET**

**MISSING**  
 from Kings Ave, Heads Rd area Gonville on 6th April



**TABBY CAT**  
 Please check your shed, garden or garage.  
 2 years old male, desexed microchipped and registered.  
 Won't wear a collar, won't answer to his name, eats houseplants - but we love him & wish he was home.  
 Likes to hide under blankets, might be curled up somewhere, please check for him.

please call or text  
 021 106 6496

**TOO MANY CHIEFS**  
 SONGS AND STORIES FROM THE ROAD



Rob Joass Wayne Mason Charlotte Yates Andrew London

"Mates on the road rolling out top quality songwriting and musicianship with lashings of irony and humour"  
 - East Auckland Times

**SATURDAY 20TH APRIL, 7.30-9.30pm**  
**WANGANUI CLUB, HERITAGE HOUSE**  
**Tickets \$40 at trybooking.com**  
 or contact Murray on 0274 429 825  
 or email theshow@corps.co.nz  
**Price includes coffee, tea and cake!**

WHANGANUI PERFORMING ARTS PRESENTS

**Letters from the Titanic**




**TICKETS ON SALE NOW**

On Stage at the Whanganui Repertory Theatre  
 4 Ridgway Street, Whanganui

7.00pm SHOW  
 Thurs 18th, Friday 19th  
 Saturday 20th, April 2024

1.00pm SHOW  
 Sunday 21st, April 2024

Tickets can be purchased from the Opera House Box Office  
 Monday to Friday 10am-4pm  
 69 St Hill Street : Ph 06 349 0511



WHANGANUI CHINESE ASSOCIATION INC  
 紐西蘭華聯會汪家壘分會

**Chinese Costume Day**

**Saturday 20th April 2024**  
**UCOL Campus (Antrium)**  
**7 Rutland Street**  
**11am-2pm**

Come and celebrate with us.  
 You have the opportunity to dress up in traditional Chinese costumes, available for all.  
 Plus lots of cultural games.



**WANGANUI EAST CLUB**

**MEMBERS' DRAWS**  
**MUST GO!**  
**SATURDAY 20 APRIL**  
**\$1200 - 6.30pm**  
**\$400 - 7.30pm**

101 Wakefield Street, Wanganui East  
 Phone 06 343 7023  
 Members, affiliated members and guest welcome.

**RELIGIOUS SERVICES**

**UNITED SOVEREIGNS CHURCH**  
 corner Puriri and Harper Streets  
**SUNDAYS, 5pm to 6pm**

United Sovereigns preach end times Revelation.  
 We preach truth and our obligation to God in these end times.  
 Everyone welcome.



**GREY POWER WANGANUI**


**Kerbside Recycling Meeting**

to be held at Club Metro  
 Ridgway Street  
 23 April starting at 11am.

Representatives from the Whanganui District Council and Whanganui District Library will be speaking on Kerbside Recycling and community programs. Easie Living display as well.

Tea or coffee will be on offer at 11am.

The Restaurant will be open for lunch.



**u3a**  
 learn, laugh, live

**U3A Whanganui Incorporated**

The second of our Autumn Lecture series will be held at the Josephite Retreat Centre from 10am on Monday 22nd April.

In this presentation internationally renowned Kiwi Archaeologist Tom Higham will discuss how DNA analysis has expanded our understanding of the out of Africa theory whilst German paleoclimatologist Madelaine Böhme adds another layer of complexity to the history of ancient human migration.

Entry cost of \$5.00

CLUB **metro** RESTAURANT @Club metro

**OPEN ANZAC DAY**

Frozen meals available, delivery by arrangement.

Don't forget our **THRIFTY TUESDAY DEAL** - buy one full price meal price meal get the 2nd 1/2 price from 12pm.

Open Tuesday to Saturday - Midday to 8pm

Call 349 0149 or text 027 588 6699 Restaurant  
 Members, Guests & Affiliated members always welcome at  
 Restaurant @Club Metro 13 Ridgway St

# Mobile Laundry and shower charity wins \$1000 thanks to Stihl Shop

In early March, an opportunity arose for Stihl Shop Wanganui to give back to the community in their quarterly promotion. The team at Stihl Shop asked the community via their Facebook page to nominate their local charity, group, team or school whom they thought would benefit greatly from the chance to win the \$1000 prize that was up for grabs. The nomination process ran for a total of four weeks. Kiri says she only stumbled upon the competition in the second week.

Kiri and partner Iven, the founders of Hope - Mobile Laundry and Shower took this opportunity to enter Hope and asked whānau and friends to do the same. "This prize meant we could focus on the next stage and start looking for appliances for the laundry. With winter just around the corner the sooner we get Hope on the road, the sooner our community in need can have access to these facilities", Kiri says. Word spread and sup-



Iven and Kiri, founders of Hope with Hayden, Stihl Shop Wanganui

port for Hope was growing. By the end of the 4th week with over 200 nominations Hope made it through to the finals and was up against two other nominees Waitotara School and Rivercity boxing. Kiri adds, "Teamwork and determination

got us through a long five weeks and we came out with a win with 755 votes. Iven and I would like to thank all our beautiful supporters and a big thank you to Hayden and his lovely assistant from Stihl Shop Wanganui. "We would also like

to acknowledge the other two nominees and all the great work they do." If you would like to sponsor or support Hope please contact Kiri on Kirimakee@gmail.com or look for us on Facebook. Hope - Laundry and Shower.



Vintage Car Club  
Wanganui Branch

## 41st Annual Autumn Motorcycle Rally

This Saturday, APRIL 20  
Open to all motorcycle riders



# Long Term Plan public meetings to discuss proposed cuts to Whanganui assets

by Deputy Mayor Helen Craig

A number of proposed cuts and new spend in the arts, library, museum and heritage sectors will be addressed at upcoming public meetings. These changes are part of the current Long Term Plan consultation. Here are just a few of the major changes proposed.

**Libraries:** Our Libraries are probably our biggest community utilised assets, and residents will be keen to know what might be affected by proposed changes. It's proposed to reduce the budget on buying new books from \$300,000 per year to \$210,000 per year, for two years, and then it will increase to \$350,000 per year. It's also proposed to close the Davis Library for one day a week to save \$40,000 per year. An extension of the Davis Library is still scheduled for 2026 to 2028.

**Opera House:** As discussed in last week's article, there is a proposal to rebuild the rear stage house which could cost approximately \$17M. A more comprehensive upgrade is not favoured by Council, as it could cost up to \$34M. Councillors really need to hear from the community about the options for this significant building.

**Upokongaro Hall:** No mention is made of



The Winter Gardens at Virginia Lake may close to lower rates increase

the Upokongaro Hall in the Long Term Plan. It's owned by Council but is empty and in a poor state. I believe this could be a key asset for the Upokongaro community as it grows, and I know the school would love to use it. I'm hoping that the community can rally to see how it could be saved. Please call me anytime.

**Fordell Hall:** Council has not allocated funds for its earthquake strengthening and I'm looking forward to hearing from the rural community how they'd like to support its restoration.

**Winter Gardens Closure:** Again, Council needs your feedback on any proposed closure of the Winter Gardens, just to save money on rates increases. My sense this is a truly loved asset that should continue.

**Hanging Baskets:** Although not a heritage as-

set, they are an institution. About \$90,000 per year is spent to maintain these. I wonder if the budget couldn't be cut a bit but retain them? What do you think?

**Arts:** Council is consulting on the future of NZ Glassworks. It is supported by rates but I think is a huge attractor for tourism and supports our many glass artists.

**Public Meetings:**

- Friday 19th April, War Memorial Centre, 4pm: regarding proposed \$35M upgrade to the Opera House. Theatre expert Phil Conroy of Architects Shand Shelton will present details.
- Tuesday 23rd April, Davis Theatre, Whanganui Museum, 5.30-6.30: regarding heritage and town centre funding in general, library cuts to funding and opening hours and Museum fund-

ing.

- Wednesday 24th April, Repertory Theatre, 5.30-6.30pm: regarding all Arts and Performing Arts sector funding.

Helen can be contacted anytime on helen.craig@whanganui.govt.nz or 021 1030737.

1 Ratepayers can check on their own property rates via Council's website [www.whanganui.govt.nz](http://www.whanganui.govt.nz), go to "Property Rating Search", put in their own address and the previous rates and proposed new rates will appear.

2. Full details of the Long Term Plan (LTP) is on councils website [www.whanganui.govt.nz](http://www.whanganui.govt.nz) go to: Long Term Plan 2024-2034. Libraries should have copies in printed form. The website has much more comprehensive and detailed information due to the huge amount of material available on each topic.

## Marshall MOTORCYCLES

GET YOUR BIKE CHECKED BEFORE WINTER

Contact Wayne  
027 443 1182 or 06 343 3114  
143 Ridgway St, Wanganui  
[marshallmotorcycles2020@outlook.com](mailto:marshallmotorcycles2020@outlook.com)

The public are welcome to come and view the bikes between 8.30am-9.30am on Saturday at the Whanganui Vintage Car Club's clubrooms, Patapu Street, Whanganui East



ABK (2010) Limited  
Advanced Building Komfort

Refrigeration, Electrical & Air Conditioning Engineers

Pleased to support the Vintage Car Club



Phone 06 348 8424

Fax 06 348 8425

205 Guyton Street, Wanganui 4500

ADVANCED BUILDING KOMFORT



Vintage Car Club  
Wanganui Branch

# 41st Annual Autumn Motorcycle Rally

This Saturday, APRIL 20 - Open to all motorcycle riders

## All motorbike riders welcome to join the Motorcycle Trial this Saturday

Do you own a motorcycle and enjoy riding in the company of other enthusiasts? Come join the Vintage Car Club's Annual Motorcycle Trial.

The Wanganui Vintage Car Club's Annual Motorcycle Trial takes place on Saturday, April 20, and all riders are welcome. It is open to anyone with a motorcycle, but the older the better, and you don't have to be a VCC member. You will also be eligible to compete for the Classic Class prizes. Please register by 8.30am on the day.

Bikes will be assembling from 8am at the VCC Clubrooms in Patapu Street, Whanganui East, with the first bike leaving at 9.30am. The public are welcome

to come and view the bikes at this time.

The approximately 40 bikes from the lower North Island leave at one-minute intervals and follow written instructions. These come rolled up in a box and can progress with a twist, to be read when required. Previously, instructions were stuck onto the tank with masking tape.

The riders choose an average speed between 25 and 45 miles per hour depending on their destination early or late. The destination remains unknown until their arrival, when they will see the signs. The route is likely to include both sealed and unsealed roads.

They should arrive at their destination by 11.30 to 12.30pm. It will be a hall out of town



Got a motorbike? Come and join the ride this Saturday

Pleased to support the  
**Vintage Car Club of Wanganui**

**ROB O'KEEFE**  
JOINERY

Joinery | Kitchens | Stairs  
Doors | Windows  
Commercial

06 344 5040 | okjoiner.co.nz  
368 Heads Road, Wanganui

**Motorcycle Repairs and Service**

- \* Workshop Service
- \* **AMSOIL Synthetic Lubricants**

**Brian Thorley  
Motorcycle Repairs**

100 Ridgway Street, Wanganui  
Phone 06 345 7499

where lunch, provided by a local group, will be available. After lunch, riders return at their own pace to the club, where there will be an evening meal, prepared by four club volunteers.

*On the Sunday, there be a visit to see someone's garage.*

Distances and speeds are in miles, in deference to the age of the bikes. However, some riders are older than their bikes. One rider is 86 years old

The classes are as follows:

- Veteran – Prior to 1918
- Vintage – 1919 to 1931
- Post Vintage – 1932 to 1945
- Post War – 1946 to 1950
- P60V – 1951 to 1980
- P80V – 1081 up to 30 years old
- Classics

Organiser Bill James still rides his AJC 7R 350cc, the same type of bike Rod Colman was on when he won the Isle of Man. Bill has been a motor mechanic since the 1960s and a keen motorcycle rider and racer, having raced not only in Whanganui but also in Taranaki and the Manawatū as well as racing in the famous Bert Munro race.

## Your Adventure Awaits

**450MT ABS**  
**\$9,990**  
PLUS ON ROADS

**650MT ABS**  
**\$9,190**  
PLUS ON ROADS

**800MT TOURING**  
**\$15,490**  
PLUS ON ROADS

**2 YEAR WARRANTY**

**Brown Brothers Bikes**  
43 State Highway 3, Westmere, 4571  
Ph: 027 572 7696

**CFMOTO**

**DSM MOTORCYCLES**

Proud to support the  
VCC 41st  
Autumn  
Motorcycle  
Rally

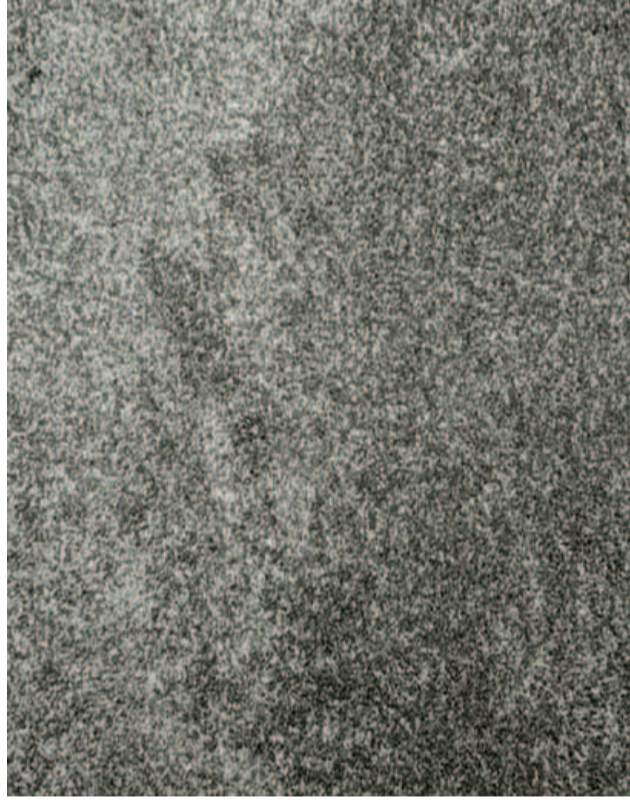
**DIBBEN SUZUKI**  
3 Churton St, Whanganui  
dsmotoltd@gmail.com  
06 349 3493

**NEW**

# Simplicity

A cost effective 40oz solution dyed Polypropylene

**\$109.00**  
Per lineal metre



## GREAT RANGE OF STOCK VINYL



**2m Wide - \$68 lineal mtr    3m Wide - \$102 lineal mtr**



# FLOORING XTRA

**Hobday & Lorentzen Flooring Xtra**

31 Wilson Street, WANGANUI. PH 06 345 5405