



52 Ingestre Street, Whanganui. Phone 345 3666 or 345 3655, email rivercitypress@xtra.co.nz

Life on the high ropes with Fergus Reid

BY DOUG DAVIDSON

When Pink, the American singer, songwriter and actress performed in Forsyth Barr Stadium in Dunedin and Eden Park in Auckland, it was not a stand-on-the-stage type of show.

Instead, attached to a four point harness system, she flew over the stadium and the 50,000 screaming fans at 15 metres a second, while tumbling over and over in the process – and continuing to sing at the same time. Fergus Reid knows more about what this involves than most people, as he had a contract to set up the equipment. He says, “Before her tour, I wasn’t a great fan of Pink, but I was soon a convert. She is an amazing performer. I have never seen anything like it before.” It is not a role for any-

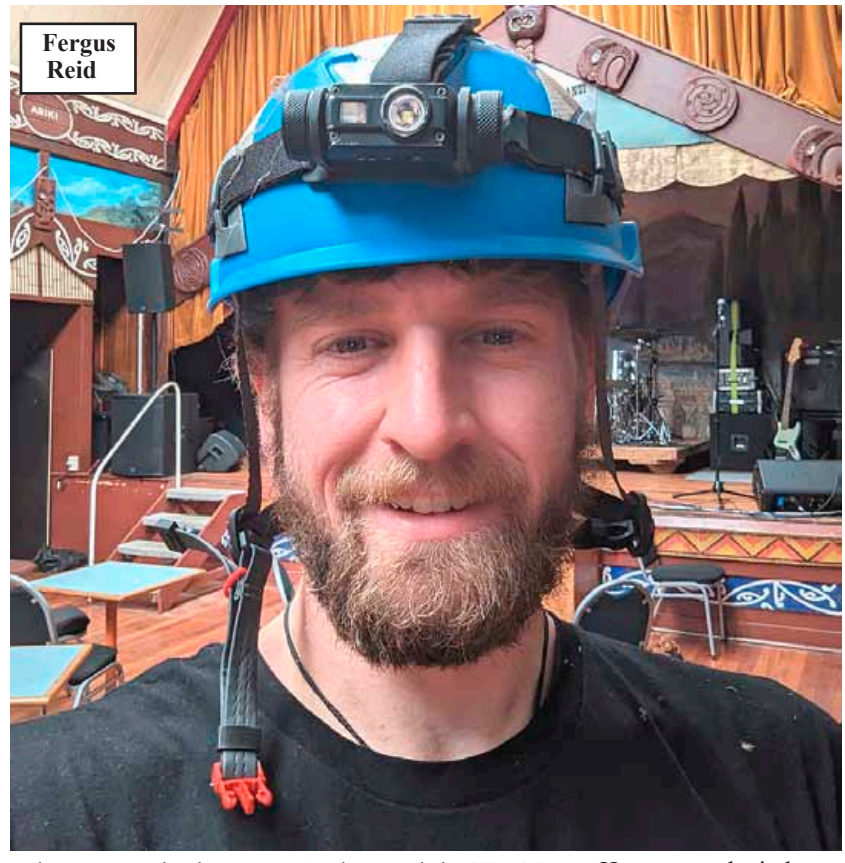
one with a fear of heights, as Fergus was as high up as you can get in the stadiums. And then there was Forsyth Barr Stadium. “It was hailing while we were setting up. Fortunately, most of the equipment is weather resistant.” He had been approached by Yoocrew, a company that specialises in concerts, festivals, stage productions, art installations, film sets and corporate events. Like most of the others involved, Fergus is a freelance contractor hand-picked for his ability to safely deliver the specific



Singer Pink, at one of her recent concerts

needs of the production. Fergus has had a long experience as a rigger, responsible for hanging up lighting, sound video and worked on the Fu Fighters concert at Wellington’s Sky Stadium at the end of January – but this was a level beyond anything he had previously experienced. Born and bred and now living back in Whanganui, Fergus got into music along with his brother. While they were at Whanganui High School, they were in a band performing at Rock Quest. At only 14, he built his

first sound system. But “I was also interested in photography. However, I decided that there was a greater chance of making a living doing technical work.” After doing a gap year in the UK – and joining a Cathedral Choir – he went to Melbourne where for six years he was an audio-visual technician at Melbourne University. Among his jobs were, “working on the Melbourne Cup, the Formula One racing, and an International Comedy festival.” He decided to return to Whanganui “to my roots



Fergus Reid

and to connect back to my family. I had developed a greater appreciation for Whanganui.” He was appointed to the Whanganui District Council as the Technical Lead at the Opera House, Cooks

Gardens and the War Memorial Centre. “It was the best job for my skill set, and I appreciated the amazing amount of support from the Friends of the Opera House and the backstage crew.”

He now works independently, such as installing sound systems in schools, but is open to more contracts with Yoocrew, which can be offered at the last minute. “Their scale is huge.”

WANGANUI BEDROOM Specialists
OPEN 7 DAYS
 Locally owned & operated
 151 St Hill Street, Wanganui
 Phone 06 345 6084

Deb Hipango
 Licensed Salesperson REAA 2008
 022 3400 877
 deb.hipango@pb.co.nz
 Buying or selling?
 There’s only one agent to call, it’s Deborah Hipango.
 Experienced and Trusted

UP TO **50% off.**
CHIROPRACTIC RANGES.
 24 months interest free*
On in-store purchases \$999 & over till 07.05.24.
Sleepyhead

Chiropractic Epic Sleep 5 Queen Size

20% off.
 now **\$1,599**

Property Brokers

100% HOME DIMOCKS
 190 VICTORIA AVE WHANGANUI PH 06 348 4877
 www.100percent.co.nz **OPEN 7 DAYS**

ENROL NOW

We have courses in:

- Animal Care
- Rural Animal Technician
- Carpentry Level 3
- Agriculture Level 3 - Dairy

AGC TRAINING FOR INDUSTRY
 CHALLENGE YOUR FUTURE | WHAKAAEHA TO WERO
 Call 0800-348 8215 www.agctraining.co.nz

Check out what's in this week's RCP

Fergus Reid is living the high life – at least on the top of stadiums such as Eden Park, installing sound systems and harness arrangements to allow performers like Pink to travel across the stadium above the crowd. (See our front page article)

Congratulations to Terry Coxon and the Virginia Lake Trust for installing a defibrillator at the Winter Gardens (page 3).

Congratulations also to the band Six60, Progress Castlecliff and the local Four Square for the event on Sunday (page 24).

We report on two current petitions. One concerns the future of the Funky Duck Café. The latest number of signatures is around 1000 (page 24); the other is asking the Council to support calls for a ceasefire in Gaza and has 2257 signatures as of Tuesday (page 13).



Doug Davidson
journalist@
rivercitypress.co.nz

There is also a good range of articles, from student/instructors in pole dancing going to a nationwide competition in Wellington (page 3) through to a film on the future of Te Waikoropupū Springs near Tākaka – the largest freshwater springs in New Zealand with some of the clearest water ever measured (page 16).

Prime Minister visits Whanganui Hospital

While Prime Minister Christopher Luxon's visit to Whanganui Hospital on Friday was ostensibly to check out the Kimiora infusion unit, it quickly gathered pace to cover a wide spectrum of health issues.

The unit, set up by the previous government at a cost of \$800,000, welcomed its first patient in December and has a capacity for 35 patients each week, though it has not reached that figure yet.

It offers both non-cancer infusion therapy and chemotherapy, though Kath Fraser-Chapple, Health New Zealand director of operations Whanganui, said usage was dependent on individual treatment regimes.

"The ability of a patient to be treated locally rather than in Palmerston North is based on clinical criteria. Patients treated in Whanganui are those that can be seen with low to moderate risk and therefore numbers will fluctuate."

Discussing the unit's operating hours, Mr Luxon asked about evening and weekend appointments, both of which are currently unavailable. It was agreed appointments outside normal business hours would be beneficial for some.

"We need to design services around patients rather than around staff needs," said Ms Fraser-



Prime Minister Christopher Luxon meets Ian Johnson at Whanganui Hospital's infusion unit on Friday. Ian is receiving an iron infusion to combat anaemia.

Chapple.

Among meeting staff and patients, the PM was introduced to Ann Bartley, Sarah Bartley and Angela Penaluna, widow and daughters of Rob Bartley QSM and trustees of the Robert Bartley Foundation, which has provided a significant boon to health services in the district, most notably through the Health Bus.

Such mobile services were a hit with Mr Luxon who said they could reach people in the community who might not wish to go to hospital for such things as a scan or vaccination.

Another attendee was Sarah Morrell, a patient at the unit, a member of the hospital consumer

council and a disability advocate.

Their discussion prompted Mr Luxon to promise the government would be putting a lot more money into disability services, adding that there was "a lot of work to do". Perhaps he started the ball rolling last week by sacking Disabilities Issues minister Penny Simmonds.

Asking what could be done to improve services in Whanganui,

the PM was told that technology – or the lack thereof – was a big issue.

Theatre manager Kath Harding pointed to a box of paper patient files to illustrate the need for digitisation of records, and spoke of software gaps in theatre services, outpatients and elsewhere which made it difficult to accurately estimate staffing needs.

"Technology across the system is very poor

– people work very hard, but systems don't support them," agreed Mr Luxon.

"For every \$100 we put in, I reckon we lose about \$30 through outdated administration."

Asked by the RCP what he had learnt during his time at the hospital, the PM responded: "It shows that services deployed locally make a difference, and we are trying to do that across the country."

"We also face major workforce challenges which is why we are planning a third medical school and expanding places at the other schools. We have New Zealand kids studying in Aussie because we don't have places."

That third medical school will be at Waikato University and is scheduled to have its first intake in 2027 with some graduates being placed in the regions, such as Whanganui.

Returning to the infusion unit, he restated the government's ambition to have 90 per cent of cancer patients receive treatment within 31 days of the decision to offer treatment.



PM Christopher Luxon discusses the impact of the Robert Bartley Foundation with Ann Bartley, widow of Rob Bartley, and her daughters Sarah Bartley and Angela Penaluna.

RIVER CITY PRESS

Positive news stories and advertising welcomed

Email: rivercitypress@xtra.co.nz
Ph. 06 345 3666

Copyright:

River City Press produces and/or publishes advertisements strictly on the basis that River City Press is entitled to and owns the copyright in the advertisement so far as the copyright relates to publication or reproduction for publication in any newspaper, magazine or similar periodical or to broadcasting of the advertisement.

MIGHTY MAY SALE!



Hurry, May only!

15% OFF* KITSET GARAGES & FARM BUILDINGS



9M X 6M KITSET 1000 SERIES DOUBLE GARAGE WITH STORAGE

KITSET FROM \$16,679*
SAVE up to \$2,943*



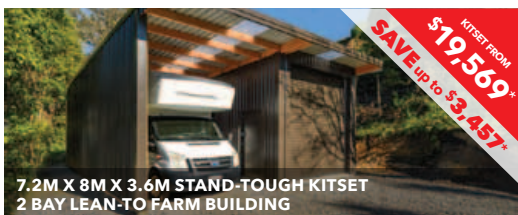
6M X 6M KITSET 600 SERIES DOUBLE GARAGE WITH MONO-PITCH ROOF

KITSET FROM \$20,549*
SAVE up to \$3,064*



9M X 6M X 3.6M STAND-TOUGH KITSET 2 BAY LEAN-TO CLEARSPAN FARM BUILDING

KITSET FROM \$13,899*
SAVE up to \$2,490*



7.2M X 8M X 3.6M STAND-TOUGH KITSET 2 BAY LEAN-TO FARM BUILDING

KITSET FROM \$19,569*
SAVE up to \$3,457*

Versatile Wanganui
50 Heads Road, Wanganui
Phone 06 348 2471
0800 VERSATILE versatile.co.nz



*Terms and Conditions: Offer available on new orders placed with a participating Versatile franchise between 1 May to 31 May 2024, where the estimated delivery date is on or before 31 August 2024. Savings shown are based on Christchurch branch prices. As each Versatile franchise is independently owned and operated and sets its own pricing, prices offered may differ from those shown and may vary from region to region throughout New Zealand. All prices include GST. Some exclusions apply. For full terms and conditions please visit versatile.co.nz.

HCV3553

MACELL ELECTRICAL LTD MAINTENANCE

Specialists in Home Security

- Residential, Commercial & Industrial Electrical Services
- 24 Hour Surveillance • Alarm Response
- Controlled Access • Cardax
- Home & Industrial Security
- Security Monitoring
- CCTV Installation and Servicing

Chris Rennie 027 443 0430
Phone 06 345 4183
Email chris@macell.co.nz



Two pole students/instructors competing in NZ Pole Competition

Emma Mearns (stage name of Emyjo) and Rachael Thorley (Thor) will be competing in the Inferno Pole Competition in Wellington on the weekend of 1-2 June. They are both students and instructors at the Whanganui Altitude Pole and Fitness centre on the first floor of 19 Taupō Quay.

To get selected, they had to submit a video of themselves and provide a blurb about the creative piece they proposed to dance to. As well they had to select one of three categories – ‘Fun and Games,’ ‘Animal Farm,’ or ‘Nightmares and Dreamscapes’

Altitude Pole and Fitness started seven years ago and offers a range of pole fitness classes from level 1 (beginners), to level 5. Other classes are designed for flexibility, strength and ‘Flow’ which is more creative dance and can be choreographed.

Each class is about 55 minutes, including warm-up and cool-down times. Membership allows you to pick and choose what classes to participate in.

One of the instructors, Mel, says, “I can see the difference between day one and three to four weeks later. By then the students are carrying themselves differently.



Emma Mearns. Photo courtesy of Elle Catraz Photography



Rachael Thorley. Photo by Rob Caven Photography

You get a sense of growth and empowerment and a sense of achievement being able to manipulate your body using your own body strength.”

She adds, “It is a supportive environment and we celebrate each other’s progress.”

The age range is from 18 to the late 60s, and it’s “a diverse community not only in age but also in size and shape. You don’t need to be strong to start. There are a couple of males among the 80-plus members.

Most classes are from 5pm to 9pm with a class at 11 on a Friday and classes on a Saturday finishing about 1pm and late afternoon/evening classes on a Sunday.

At 1pm on Saturday, 25 May, they are having a trial class for prospective students to decide whether it is for them. The cost is \$15. Bring shorts and a tee shirt.

Virginia Lake Trust Inc. installs defibrillator at Virginia Lake Winter Gardens

On Sunday, 28 April, the Virginia Lake Trust handed over to Mayor, Andrew Tripe, the defibrillator recently installed in the entrance to the Winter Gardens. The need for this equipment became obvious to the Trust Chairman, Terry Coxon, when late last November he took John Lidgard, a Lake Volunteer, for coffee at Funky Ducks, where he sadly collapsed and later died after valiant attempts by two leaders of Whanganui Enterprises Ltd, then Ambulance and Fire crew who worked on him for an hour. No defibrillator was available anywhere near the site.

The Trust decided to investigate installation and unbelievably, John’s daughter Caroline, is on the Marketing team at Amtech Medical Supplies in Whanganui, one of NZ’s major importers of defibrillators. Amtech



came to the party in a huge way donating the secure box, opened by making a 111 call, as well as remembering John on the box and giving

Caroline an extremely generous staff discount for the machine inside.

The Mayor graciously accepted this gift on behalf of his citizens and was warm in his praise of the Trust and particularly its volunteers, of which John was but one, who worked around the Lake two mornings every month. Andrew pointed out that 1 in 3 New Zealanders die of heart problems, so ease of early access to a defibrillator is vital in an event. Without wishing anyone harm, he does hope this one can save lives.

- Terry Coxon

Folk-pop duo performing Friday



The Terrible Sons, a Christchurch folk-pop duo, have a date in Whanganui tomorrow, Friday, May 3, and promise that their show will be anything but terrible.

In fact, they should be in a buoyant mood, having just been named as finalists in the 2024 Aotearoa Music Awards in the Best Folk Artist category, where they are up against Adam McGrath and

Tom Lark.

The Terrible Sons are husband-and-wife pairing Lauren and Matt Barus, and the Whanganui show at St Peter’s Church on Koromiko Road is part of a short New Zealand tour of intimate venues.

The gig will feature songs from their 2023 album, The Raft Is Not The Shore, and their latest single, Thank You.

Tickets are on sale via www.terriblesons.com

Want straight teeth?

VICTORIA DENTAL

Make an appointment today

06 345 3222

Victoria House

1a Rutland Street, Wanganui



COLOURPRO PAINTING

We paint so you don't have to

NO-OBLIGATION, FREE QUOTES INTERIOR & EXTERIOR PAINTING

Ph: 027 856 1779 | Email: colourpropainting21@gmail.com

Ash Regan - Qualified Painter

SUMMIT Electrical

Top Service • Top Workmanship • Top Electricians

- 24/7 Service
- FREE Quotes
- Member of HAZARDCO
- For all your electrical requirements

Summit Electrical Services Ltd

0800 2 SUMMIT
0800 2 786 648
Todd Cowan - 022 325 0056

Member MASTER ELECTRICIANS
Electrical Contractors Association of NZ

THOMPSON PLUMBING & GAS LTD

Master Plumbers

- General Maintenance Plumbing
- New Builds and Renovations
- Programmed Maintenance
- Drainage and Unblocking
- Gasfitting Service
- Hot Water Systems
- Heating
- Septic Tanks and Wastewater Systems
- Rain Water Tank Installation

06 345 0924
office@thompsonplumbing.co.nz
thompsonplumbing.co.nz

Find us on Facebook

Gonville superValue
just what you need

THIS WEEK'S SPECIALS

Frozen Mutton Roasts
only \$7.99/kg

\$15 Trays Pork Chops or Steaks
only \$10.00 each

WILD WEEKEND SPECIAL

only \$8.99/kg
Frozen Mutton Knuckles or Neck Chops

Whole Neck Dog Bones only \$1.99/kg
Five \$5 Meat Trays only \$20.00

PRODUCE

1kg Bags Feijoas
only \$4.99 each

5kg Bags Ilam Hardy Potatoes
only \$11.99 each

NEXT WEEK'S SPECIALS - STARTING 6.5.24

Frozen Mutton Chops
only \$7.99/kg

\$15 Trays Diced Steak
only \$10.00 each

All items while stocks last (no rainchecks). Get in early.
47 Abbot St, Gonville • Ph 06 344 3002 • 7am-8pm, 7 days
www.wanganui.store.supervalue.co.nz

Whanganui Camera Club 1/3rd through their Churches project

Whanganui Camera Club is well into its Churches project, with over 20 churches in the district now photographed. It's quite a challenge – there are over 60 places of worship in the Whanganui area, and the Club hopes to include most of these, aiming to document the exteriors and the inside detail of all of them.

A recent highlight for the team was a weekend trip to Ohakune, Raetihi and Hiruharama Jerusalem to capture images of the local churches, many with outstanding heritage value.

“By the time we arrived in Ohakune ‘drizzle’ had turned into a steady downpour – not so good for outdoor shots,” says Club president John Smart.

“But inside the churches – St Joseph’s and St John’s Churches, we were able to use indoor lighting and enlist all the technology of modern cameras to capture some truly lovely images of stained glass windows, intricately carved altars, richly polished wooden pews and other interesting adornments. Some of these churches go back to early settler times, and there was much evidence of this as we roamed around.”

“Raetihi was our next stop and here we photo-

graphed St Patrick’s and St Mary’s, again lovely interiors” says John. After Raetihi, the team drove to Jerusalem for an overnight stay in the Old Convent, ready to photograph the distinctive St Joseph’s Church there in the morning.

“Koriniti Marae, with its beautiful Peparu Church, was our last stop for the weekend, and we were very appreciative of the hospitality offered us there. We only hope that our photographs will do this and all the other churches on our whistlestop tour down the River Road proper justice.”

Like the Club’s successful Houses Project, the Churches will be a feature of the Club’s annual exhibition in October, as well as an audio-visual featuring a complete digital record of all the churches photographed in the project. Selected digital and print images will be archived at the Alexander Library – Te Rerenga Mai o te Kāuru for future generations. The Club has been awarded a \$1574 grant from the Whanganui District Creative Communities fund to cover the cost of printing and gallery hire for the Churches exhibition.



Photographers in St Mary’s Church, Raetihi. Photo by Sharad Kumar

Approximately 1500 at Anzac Day service



Scenes from Whanganui’s 2024 Anzac Day memorial service.

A later start time – 7am – helped boost attendance at Whanganui’s Anzac Day service last Thursday.

An impressive turnout of approximately 1500 people were at the War Memorial Centre to ac-

knowledge the sacrifice of service men and women who gave their lives in two world wars, and in other international conflicts.

It was an overcast morning, but the rain stayed away as descendants of Māori Battalion veterans led the parade onto the Memorial Centre forecourt.

Returned and Services Association Welfare Trust president Robert Allen gave an address, as did chaplain Rosemary Anderson, Whanganui mayor Andrew Tripe and Lieutenant Craig Harnett.

The Whanganui Highland Pipe Band performed during the extensive wreath-laying ceremony, and the Whanganui Brass Band also provided accompaniment.

The Wanganui Aero Club conducted a fly-past of four planes at the start of the service, followed later by two RNZAF helicopters.



- ❖ Supply, installation, servicing & repairs of all types and brands of heat pumps.
- ❖ All commercial and residential electrical work: Board rewires, lighting, repair and installation of any of your electrical needs.
- ❖ Vehicle air conditioning re-gas available
- ❖ Registered Electrician

Phone 027 565 6734 ❖ email: rtheatpumps@gmail.com



You may have noticed the hard working team from Beaver Trees working on your neighbours trees... Now is a great time to have all your tree maintenance taken care of, so why not take up our offer of a FREE appraisal?

Your Trusted Professionals
for over 50 years

Specialists in
Difficult Tree Removal
Full Tree Maintenance
Pruning & Thinning
Tree Reduction
Stump Grinding

A tree is a thing of beauty that adds value to your life, it's worth spending money and time on.

BEAVER
TREE SERVICE

VOUCHER

*Conditions apply

This voucher entitles you to a **FREE TREE APPRAISAL***

CALL US NOW 0800 4 BEAVER • 0800 423 283

E: office@beavertree.co.nz
WWW.BEAVERTREE.CO.NZ

55,500 visitors expected each year to refurbished Sarjeant Gallery

Repair Cafe fixes 38 items at official opening

By Mark Dawson
Whanganui District Council is confident there will be enough car parking provision at the redeveloped Sarjeant Gallery to cope with a significant influx of visitors.

The redevelopment, at a cost in excess of \$68 million, will see expanded exhibition and storage space and extra facilities. But that expansion will also take up some of the car parks available at the original Sarjeant.

Some readers have expressed concern to the River City Press that there will be insufficient parking, especially in view of the extra 22,000 visitors the gallery is estimated to attract each year.

However, Sarah O'Hagan, the council's Community, Property and Spaces general manager, says there will be additional parking across Pukenuamu Queens Park.

"Once the landscaping design is fully implemented there will be a small net increase in car parks," she said.

"The Davis Library parking will be reinstated and maximised, and provision will also be made for a range of visitors, in-



The cantilevered viewing space on the first floor of the Sarjeant Gallery's new wing, which is called Te Pātaka o Sir Te Atawhai Archie John Tairoroa, is facing north and when standing in there you can see right across the Whanganui river, and across our region to Ruapehu. Then, if you do a 180 degree turn and look behind you, you will look across the smart new gallery spaces of

cluding pedestrians, bike riders and bus passengers. The area is well serviced by buses and a significant amount of parking will be also available for tour buses at the War Memorial Centre."

She could not say what the net increase in parking spaces would be, but said parking was one of

the new wing, across the floating walk bridge above the newly tiled atrium, over the golden Matai floors of the heritage building, under the Sarjeant's 14-meter-high dome, out the doors at the top of the Veterans Steps and all the way to the sea. A visual line from the mountain to the sea. (Taken from Sarjeant Gallery Te Whare O Rehua Whanganui Facebook page)

the considerations in the co-design process with stakeholders. "Feedback was to ensure thought was given to mobility parking, accessibility and drop-off points."

Approximately 33,500 people visited the gallery's temporary home, the Sarjeant on the Quay, in 2022/23. Based on pro-

jections, a number closer to 55,500 per year is expected when the redeveloped gallery reopens – scheduled for later this year.

That is an extra 22,000 visitors, and it is estimated they will generate around \$11.4 million in additional regional spending every year.



Volunteer leather goods repairer Kristy Palleson discusses fixing Alastair Goodwin's wallet. Photo credit: Jacqui McGowan

A 100-year-old clock face and a 50-year-old garden fork with a wobbly handle were among 38 items fixed at Repair Café Whanganui's official opening last Saturday.

Michelle Wongkhom brought her 70-year-old sewing machine to be assessed by David Scheepers who came from Foxton with his wife Irene to check six machines that were booked in earlier.

Councillor Charlotte Melsor's 16-year-old microphone was fixed by musical instrument and sound technician Dave Griffiths, who soldered the wiring to re-attach the input.

"The whole place was buzzing with activity and conversation," she said.

"It's so great to have this in Whanganui. Not only did Dave save my microphone going to landfill, but it also saved me \$200 to replace it.

"I'm very grateful!"

A further ten items need more time to fix so have been taken home by several repairers, including one of the group's

teddy bear surgeons Kathrine Grey.

"Teddies hold a special place in people's hearts," said Kathrine.

Half the visitors brought at least one item to be repaired.

"The range of belongings to be fixed had all 13 repairers continually occupied," said Repair Café Whanganui project lead Margi Keys.

"There were lots of clothes to be re-hemmed, stitched, darned or patched; a plastic juicer from the 1980s; a radio without a knob for tuning; costume jewellery; toys; an aluminium chair; a shoe and a mouse-eaten World War II Air Force cap.

"About 100 visitors passed through the front door to a wonderful happy vibe generated by the 24 volleys on deck.

"I feel very proud of them all.

"Our café was busy. All the delicious donated home-baked food was eaten, and our visitors were generous with their donations."

The next event is on 25 May.

FROM WHANGANUI TO THE WORLD

It's the perfect & affordable time to take flight to your dream destinations this winter from Whanganui, via Auckland with Air Chathams!!

So get on board and support local!

airchathams.co.nz

Hot flight deals for you!

- Auckland (AKL) to Sydney (SYO) - Available between 20Mar - 30Jun 24 - \$629
- Auckland (AKL) to Brisbane (BNE) - Available between 10Mar - 21May 24 - \$645
- Auckland (AKL) to Fiji (NAN) - Available between 03Apr - 03Jul 24 - \$669
- Auckland (AKL) to London (LON) - Available between 01Nov - 30Nov 24 - \$1935

Your family in the sky
to whanau i te rangi

Real Estate with Steven & Jared

“Brothers in Real Estate”



Motivated by what their clients said they are looking for in real estate service, and wanting to remain on the cutting edge of providing it, the pair joined the Whanganui team which has made significant strides since entering the market in 2021.

Why us?

Combining experience from over 500 property transactions, Whanganui to South Taranaki and Rangitikei, Steven and Jared are a “two for one” deal as salespeople working together and continuing to get local properties sold.

Using in-depth market knowledge with a strong work ethic, they always make time to meet at your convenience and discuss marketing campaigns and plans to sell your property in a timely fashion.

They believe in top level service and bringing owners the best options to sell in current conditions, and cannot wait to show you the high quality resources you get with Arizto - from pre-listing market appraisals, presentation advice, your own finger-tip control of digital platforms, and their unique abilities with professional scripts and superior understanding of industry laws.

Their clients can access a full range of real estate services for less cost in the back pocket, including a commission rate of 2% + GST and the marketing essentials covered.

Why now?

Simple, how real estate business is conducted in Whanganui is so important, now more than ever, to meet a changing market.

After the phenomenal rise of sale prices in 2020-21, the market has gone through a significant adjustment period, one that you need experienced and hard working salespeople to understand.

Therefore, Steven and Jared are determined to provide you with the most practical advice to improve the chances of your property selling.

Joining the Arizto brand with its near-instantly available information, focused buyer campaigns and great value on fees will allow them to provide you with a tailor-made plan to find not just any buyer, but the right buyer in a happy medium – you selling and moving on with life, and the new homeowner settling right in.

Why are we your team?

Steven Schwamm is the Regional Support Manager for Manawatū, Rangitikei, Whanganui, and South Taranaki.

He takes on the key role of assisting the ambitious Arizto team perform their tasks and bring better value service to their clients.

After well over a decade in the industry, Steven self-qualified with a Real Estate Diploma and Branch Manager's Certificate, making him one of the youngest licensees within Arizto to hold an Agency license, while also Associate of the Real Estate Institute NZ (AREINZ).

"It's a very hands-on role, giving support to the sales team in terms of what they need, not what an agency says they need," Steven said.

"To some, they need reassurance that someone's on their side.

"To some, Impartial back-up cover. If somethings going on, life events, they know (the task's) sorted.

"To some, it's the advice of everyday stuff. I'm a phone call away to discuss potential property defects, and I don't mind being on the road – I'll shoot over and sort it."

"And for some, it's everyday accountability."

"Being firm but fair in all actions. Appreciating everyone brings something to the table, and collectively, that makes the sales team succeed," he added.

Still an active selling agent alongside Jared, Steven is not in any ivory tower and has his finger firmly on the pulse of what is happening in today's market.

However complicated the scenario or delicate the negotiation, he has the ability to bring it together in the most efficient and stress-free way possible.

Helping build this agency for the future is Jared Smith who will also use his unique scribe abilities as National Content Writer for the entire Arizto brand.

An experienced professional writer who has worked in media across the country, Jared is proud to promote Arizto's success as a young real estate company and its vast array of team members, nation-wide.

Getting his Bachelor of Arts at Canterbury University, followed by his Graduate Diploma in Journalism at Massey (Wellington campus), Jared became a seasoned worker through journalism/editing roles throughout the country South, before settling in Whanganui and qualifying for his NZ Certificate, Real Estate Salesperson.

He will provide quality marketing scripts to increase interest in your property, as uses his rapport with buyers and sellers to provide service they value.

Jared also knows that Arizto's methods are the way of the future – by offering immediate feedback to sellers of their marketing campaign's progress through the use of App - with personalised logins, as well as buyers receiving up-to-the-minute property information in email form nearly instantly following open homes and house visits.

The right choice

"More and more locals have been intrigued to find out the difference and have trusted Arizto," said Steven.

"It's a tribute to traditional [real estate], but embracing technology,"

But just because the commissions home owners pay are lower does not mean the personal service they receive is lesser or the price they could achieve from the sale is lower than the market could have paid – Steven advocates for his team to get in front of people and have the conversations that matter when it comes to connecting the right seller with the right buyer.

For those who would rather talk to Arizto people in an office setting instead of their homes – he has organised access to professional meeting office space in downtown Whanganui, Hawera, and Palmerston North - for the sales team to be productive, come together and collaborate.

And while most buyers search for property through online websites like Trademe – because no salesperson of any company can honestly claim that only they “have the buyer” for your property – you will still see Arizto popping up in your favourite papers and trade publications.

As a duo using streamlined processes, Steven and Jared embrace the use of technology and are ready to help with your next property decision.

Steven Schwamm AREINZ & Jared Smith - 0800 176 4321

✉ stevenandjared@arizto.co.nz

📍 Real Estate Whanganui

Licensed Salespeople (REAA 2008)



arizto.co.nz Smarter Real Estate

TREADWELL GORDON
Barristers, Solicitors, Notary Public



CONVEYANCING | TRUSTS | WILLS | FAMILY

FREEPHONE 0800 TREADWELL
Phone 06 349 0555
www.treadwellgordon.co.nz

WHANGANUI | TAIHAPE | MARTON | FEILDING | OHAKUNE | WAVERLEY

Celebrating **76 YEARS**
1947 - 2023

- 3rd generation family business
- We grow our own vegetable and bedding plants
- Local stockists of Matthews Roses
- FREE delivery within city limits
- Plenty of off street parking



wanganuigardencentre@gmail.com
95A Gonville Ave, Wanganui.
Phone 06 344 4561

Open 7 Days, 8.30am - 5pm
Plenty of parking available



Gonville Library to hold talks on kerbside recycling and Repair Cafe

Whanganui District Council waste adviser Stuart Hylton will be at Gonville Library this morning at 10am to give a talk on kerbside recycling. This is an opportunity to find out how the council's new recycling system will work and which materials

you can (and can't) recycle. There will be a chance to ask questions, and more information is available at whanganui.govt.nz/recycling

Next week – Thursday May 9 – Gonville Library has its monthly Tea and Topics event which will feature Margi Keys talking about the newly-established Repair Café from 10am to 12noon.

Repair cafés worldwide have the goal of improving accessibility to and an understanding of repair, re-purposing and recycling opportunities as a means to reduce waste. They are not-for-profit events with volunteer specialists offering their services to the community.

Whanganui's new Repair Cafe will be held on the last Saturday every month for two hours at the Harrison Street Community Church Hall, which is big enough to hold up to 30 repairers.

Project lead Margi Keys

will talk about how Repair Cafe Whanganui works, what you can get fixed and how you can be involved, either as a visitor or as a

volunteer. Tea and Topics will have its usual format, with a hot drink and a biscuit being served between 10am and

10.30am. The talk will start at 10.30am and there will be ample opportunity to ask questions or share stories.

A treat for Johnny Cash & June Carter show fans



LEAVING JACKSON, The Johnny Cash and June Carter Show has become one of the must-see live Acts touring today. Over 300 performances at some of the most iconic venues in Australia and New Zealand – “The State Theatre Sydney, Thebarton Adelaide, Opera House Wellington, Palais Theatre Melbourne.”

The two-hour (2 x 1-hour sets with interval) show will keep you entertained while experiencing the ups and downs of the couples' lives.

Johnny Cash and June Carter were one of the most legendary couples in the world of country music.

Their love story, which started as

a professional collaboration on stage, blossomed into a lifelong romance that lasted until Cash's death in 2003. The duo was famous for their on-stage chemistry and musical talent, and they supported each other through personal struggles and health issues. Their music continues to inspire new generations of artists and fans.

A Performance that is both visually fantastic, greatly collaborated and wholeheartedly performed.

LEAVING JACKSON
The Johnny Cash & June Carter Show
Thursday, 9 May 2024
Royal Whanganui Opera House
Tickets from Ticketek



A successful event was held for Chinese National Costume Day last month in the UCOL atrium. Pictured are volunteers of the New Zealand Chinese Association Whanganui branch.

FOR THE BEST HIRE EQUIPMENT IN TOWN

MARQUEES • MACHINERY HIRE
PARTY HIRE & SALES

LAWNMOWERS

HEDGETRIMMERS & CHAINSAWS
(Battery & Petrol available)

WEEDEATERS

HARRISON'S
HireMaster
WANGANUI



26 CHURTON STREET PH 345 7017

www.hiremasterwanganui.co.nz

LEAVING JACKSON

THE JOHNNY CASH & JUNE CARTER SHOW

After sell-out shows throughout Australia and New Zealand, Leaving Jackson The Johnny Cash and June Carter Show returns with a bigger show than ever. All the hits and stories that captured the life of a LEGEND - From the famous "Walk the Line" and "Folsom Prison Blues" to the Legendary songs of the "Highway Men" Leaving Jackson will perform them all. So come and join us for a night you will never forget.

THURSDAY 9 MAY 2024

Royal Whanganui Opera House • Tickets from Ticketek

2018 HOLDEN SPARK LT

1.4L auto, NZ new, only 37,000 kms, leather, bluetooth, cruise control, reverse camera.



was \$14,995 **NOW \$13,995**

2019 TOYOTA COROLLA SPORT HYBRID

1.8L, HYBRID, auto, only 73,000kms, tints, aftermarket alloys, parking sensors, loaded with features.



was \$25,995 **NOW \$24,995**

2017 SUZUKI IGNIS HYBRID

1.2L HYBRID, auto, only 32,000kms, tints, alloys, high seating, economical, great colour!



was \$16,995 **NOW \$15,995**

2016 FORD FIESTA TREND

1.5L, auto, NZ new, only 45,000kms, 17" alloys, sporty stripes, bluetooth, cruise control.



Just Arrived **NOW \$12,995**

2021 HYUNDAI I30

1.5L, auto, NZ new, only 13,000kms, bluetooth, reverse camera, weather shields, great buy!



was \$25,995 **NOW \$24,500**

2011 FORD FALCON XR6

4.0L auto, only 132,000kms, towbar, alloys, cruise control, perfect family vehicle, very popular.



was \$15,995 **NOW \$14,750**

2012 PEUGEOT 508

1.6L, auto, only 133,000kms, dual climate, cruise control, parking sensors, alloys, great family car.



NOW \$8,995

2015 JAGUAR XE R-SPORT

2.0L, turbo petrol, auto, NZ new, only 76,000kms, leather, GPS, reverse camera, bluetooth, parking sensors.



Just Arrived **NOW \$24,995**

2015 SUBARU XV EYESIGHT

2.0L, auto, only 65,000kms, AWD, anti collision, lane departure, weather shields, tints, stunning in black.



was \$21,995 **NOW \$20,500**

2021 NISSAN QASHQAI ST

2.0L, 2WD, auto, only 47,000kms, 19" Ti alloys, reverse camera, bluetooth, cruise control, keyless entry and start.



Just Arrived **NOW \$25,995**

2022 HAVAL JOLION ULTRA

1.5L turbo HYBRID, NZ new, only 14,800kms, like new, lots of features, leather, great savings from new!



was \$32,995 **NOW \$31,995**

2016 DODGE JOURNEY R/T

3.6L, petrol, NZ new, only 48,000kms, auto, top model, 7 seater, leather, reverse camera, towbar.



NOW \$23,995

2016 SUBARU OUTBACK LTD

2.5L auto, AWD, only 67,000kms, leather heated seats, dual climate control, safety package.



NOW \$23,995

2019 MAZDA CX-5 GSX

2.5L, auto, 4WD, only 80,000kms, leather with suede, adaptive cruise, GPS, bluetooth, towbar.



NOW \$27,995

2018 SUZUKI VITARA TURBO

1.4L, auto, AWD, NZ new, 1 owner, GPS, only 50,000kms, bluetooth, reverse camera, great buy!



NOW \$23,995

2017 SUZUKI VITARA TURBO

1.4L, turbo, auto, NZ new, 1 owner, 19" alloys, safari body kit, towbar, spoiler, GPS, bluetooth, reverse camera.



NOW \$18,995

2023 KIA NIRO GT-LINE

1.6L, HYBRID, auto, 1 owner, sunroof, only 19,000kms, reverse camera, dual A/C, electric tailgate, heated & cooling seats.



NOW \$49,995

2016 TOYOTA HILUX SR5

2.8L, diesel, auto, 4WD, alloys, stone protector, canopy, towbar, running boards, GPS, reverse camera.



was \$39,995 **NOW \$36,995**

2018 MAZDA BT-50 GSX

3.2L auto, only 116,000kms, 360 camera, tonneau cover, towbar, running boards, tints, cruise control.



NOW \$29,995

2019 HOLDEN COLORADO LTZ

2.8L, turbo diesel, auto, 2WD, 1 owner, stone protector, central locking canopy, towbar, tubliner, reverse camera.



NOW \$26,995




SUZUKI
100
HOUR SALE

SAVE THOUSANDS ON A NEW SUZUKI
HURRY, SALE ENDS MONDAY!



Promotion ends 06/05/2024. Conditions apply. See your Suzuki dealer for more details. For info on our Real Value 3 year/100,000 km comprehensive warranty, 5 year/100,000 km powertrain warranty, PLUS a full 5 year roadside assistance plan, visit www.suzuki.co.nz

276 & 330 Victoria Avenue, Wanganui. Phone 06 345 5115



David Jones Motors





World Red Cross Day May 8

Great location for Red Cross second-hand book shop

Last chance to get Council Long-Term Plan submissions in



Could we lose our hanging baskets?

By Mark Dawson
Whanganui citizens have only until 5pm today (Thursday, May 2) to make submissions to the council's Long-Term Plan 2024-2034 – and so people are being asked to get their skates on.

Referring to “the most difficult long-term plan” she had had to deal with since arriving at the council table 11 years ago, deputy mayor Helen Craig has urged people to make submissions.

And mayor Andrew Tripe commented: “There are a number of big, important choices in the draft Long-Term Plan and we need to make some difficult decisions.”

The LTP has a number of contentious issues – building a hotel, revamping the Opera House, selling New Zealand Glassworks, closing the Virginia Lake aviary, shutting the Whanganui East swimming pool, reducing library opening times, scrapping the Victoria Avenue hanging baskets are just some of them – and Cr Craig says it is vital the community lets council know its preferences.

With costs for infrastructure such as roads, pipes and sewage up more than 20 per cent, the Whanganui council is in a financial bind and a desire to keep the rate rise to a “more affordable” 10.6 per cent (around 12.5 per cent for residential properties) means some tough decisions.

Citing the impact of inflation on infrastructure costs, Cr Craig said: “Whanganui District Council will have to close up shop in the next ten years at this rate.”

She pointed out that 25 per cent of New Zealand's infrastructure was the responsibility of local authorities, yet rates only accounted for 7 per cent of the total tax take, with central government pocketing 93 per cent.

Which prompts the question: What can be done to get a greater contribution from central government?

Cr Craig said Local Government New Zealand was pushing a few options, including the GST on rates bills going to the local authority rather than the government's coffers, and charging rates on schools, hospitals, government departments and churches, all of which are currently exempt.

Last year's average rates rise was 7.9 per cent, and Whanganui had a rates take for 2023-24 of \$73.766 million from 21,377 rateable properties -- residential (18,611), commercial (1262) and farming (1504).

As of Friday, April 26, the council had received 850 submissions to the LTP.

The 2021-2031 LTP received 608 submissions by the close of consultation, which was considered an outstanding response and the highest level of engagement from the community in many years.

*You have a few hours to help shape Whanganui's future ...

Submission forms are available at <https://www.whanganui.govt.nz/Your-Council/Have-Your-Say/Consultations/Long-Term-Plan-2024-2034>

Submissions can also be emailed or filled in on a printed form available from the council offices.

Back in October 2021, the Red Cross had to relocate its successful book shop and were overjoyed when the owner of their current location at 73 Liverpool Street, asked “Is there anything I can do to help?”

They look back and say, “It was the best thing that happened.” The shop is brighter, warmer, and more inviting as well, as having plenty of street parking. Then there is the connection with the Villa Café and New World Supermarket. Customers to both will often pop into the bookshop, and probably the reverse as well.

Another advantage for the Red Cross is that their Disaster Welfare Support team is based in a building at the back of the café. It brings staff and volunteers much closer.

Trudy is the volunteer shop manager, and she says, “Our attitude is to have constant turnover.” Most books are priced from \$3 to \$7. “We are hugely grateful to the large numbers of books donated and to their quality, making them easier to sell.” Some collectors' books will attract a higher price, but as Trudy says, “We are prepared to negotiate.”

Trudy is keen to explain where the profits go and it is to a combination of local and New Zealand-wide programmes. A recent example was the work of the Whanganui Red Cross Disaster Welfare and Support team sent to Auckland and Hawkes Bay following the cyclone destruction. The team is one of 23 around the country and can be sent wherever they are needed.

They also assist the Refugee Resettlement

programme in Palmerston North (there is none currently in Whanganui). Whanganui provides household items such as bedding and covers the costs of children's car seats, swimming lessons and driving lessons.

The Red Cross partners with Plunket to provide Baby CPR, where basic CPR and basic first aid are taught for free.

Here in Whanganui, they are providing help for the Putiki Emergency Relief group and are offering a Psychological/Social First Aid course for youth, providing them with tools to listen and/or refer. Another course is a ‘Young Humanitarian’ course aimed at students at years 7 to 9.

The shop has “a huge number of repeat customers and we even run a request book list.” So if that book comes in, they notify the customer and even post out books at the customer's expense.



Volunteer shop manager, Trudy

One volunteer runs their Trade Me Account, selling cartons of books of a single author, which are clearly loved by the buyer.

They also have a large number of DVDs, with some customers checking in each week. “And

we can never get enough jigsaws from the kiddies level up.”

All this requires a lot of volunteer help and the shop is always on the lookout for new recruits. If you can volunteer at the bookshop, please phone Trudy on 06 345

3761. See below for contact details to volunteer for the Whanganui Disaster Welfare and Support Team.

Red Cross Bookshop Opening Hours: Monday to Friday, 10am to 4pm and on Saturday from 10am to 1pm.

NEW ZEALAND
RED CROSS
RIPEKA WHERO AOTEAROA

Whanganui Disaster Welfare & Support Team

Do you want to help when the community need us most?

Can you keep calm under pressure; are physically fit and willing to learn?

Contact us for more details
email: wng13@redcross.org.nz
web: www.redcross.co.nz

NEW ZEALAND
RED CROSS
RIPEKA WHERO AOTEAROA

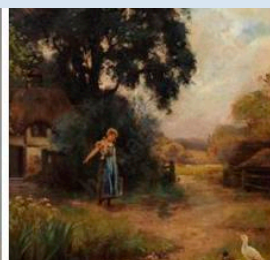
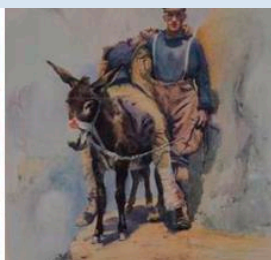
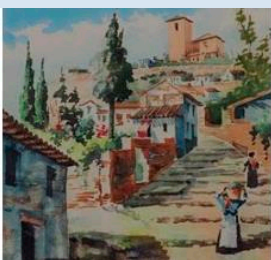
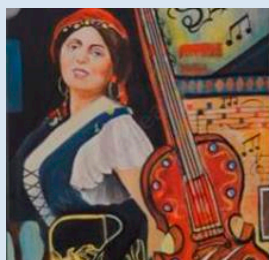
BOOKSHOP

73 Liverpool Street
(opposite New World)
Ph 345 3761 or email
wanganui.branch@redcross.org.nz

Quality Second Hand Books

Opening Hours:
Monday - Friday 10am - 4pm
Saturday 10am - 1pm
Books and volunteers always welcome.

CALL FOR ENTRIES – June Art Auction



Following our very successful March Sale in which we sold a magnificent oil painting by the NZ artist H.W. Kirkwood (centre above) for a near record price of \$8,625 (incl. Buyer's Premium), we are now seeking entries for our next 10 day art sale at the end of June. With commission rates ranging 5%-18%, now is the time to sell your unwanted art. Our clients are across New Zealand and overseas.

For a no obligation appraisal of what your art might be worth at auction, call Henry Newrick on 027 471 2242

Heritage Art Auctions, 136 St Hill St, Whanganui 4500. www.HeritageArtNZ.com Email: Henry@HeritageArtNZ.com



Pink Ribbon Breakfast Month

Register at: www.pinkribbonbreakfast.co.nz to host your Pink Ribbon Breakfast

Why celebrity chef is urging locals to host a Pink Ribbon Breakfast

May is Pink Ribbon Breakfast month and New Zealand's first MasterChef winner Brett McGregor has shared his personal reason for encouraging people in the Manawatu-Whanganui region to get involved. "My family has had dealings with cancer in many forms," says Brett. "Over the past four years I have had

to watch a family member go through incurable breast cancer, something she simply doesn't deserve. No one does. I am involved to simply support them and to help raise funds to help others." Throughout May, tens of thousands of Kiwis host special events in their homes, workplaces and communities in aid of



Brett McGregor

Breast Cancer Foundation NZ. "Hosting a Pink Ribbon Breakfast is not just an incredible way to raise vital funds for breast cancer research, education campaigns and patient support services, it's also whole lot of fun," says Ah-Leen

Rayner, chief executive of Breast Cancer Foundation NZ. Breast cancer is the most common cancer for Kiwi women, with around 120 diagnosed in the Te Whatu Ora MidCentral area and 55 in the Whanganui area every year.

Riders Against Cancer putting on a Pink Ribbon morning tea



Sandy and Penelope, her Softail Harley Davidson, and Gloria their Mascot.

Riders Against Cancer was set up in 2021 when the President of the group, Danny Harrison, experienced his daughter going through breast cancer. He brought together a group with a common desire to help people experiencing cancer.

The RAC started in Manawatu with members from Palmerston North, the Manawatu, Wellington, and Whanganui. When a member went to live in Christchurch, another branch was formed, and then in Southland.

Sandy Carter, who is the National Secretary for RAC, says that "in our first year we raised \$13,000, and this year we have already raised double that." Their last event – a children's charity ride – raised \$15,000.

The Pink Ribbon event is on Saturday, 18 May, starting at 10.30am, and the proceeds will go to the Breast Cancer Foundation. The cost is \$25 and includes morning tea, a Blind Handbag auction and prizes for the best and the worst OpShop Outfit. It will be held at Bayleys on Wicksteed Street and is being sponsored by Jean Clark and Jess Butters from Bayleys.

A highlight will be the Blind Handbag auction. You will be told of all the items that could be in the

handbags, but you won't know which handbag contains what. You could win anything from a portrait painting session worth \$350, to book vouchers through to another \$350 item – which is the handbag itself.

Sandy says, "When we held a morning tea last year we had 20 people, 11 bags and raised \$1100. This year it will be a much bigger venue and we are hoping for 50 people. There will be 30 handbags for auction."

She adds, "All the handbags have been donated and are in various states of use."

Sandy lives in Palmerston North but will be here for the morning tea. As she will have to carry things, she might not make it on her pink Harley Davidson bike – but you can see her and the bike in the picture.

To book for the Pink Ribbon morning tea phone Jean Clark on 027-583-1272, or Jess Butters on 027-723-0488.

Flair 4 Hair

Pleased to support the **Pink Ribbon Breakfast Month**

Telephone 344 4025

42B Fitzherbert Ave, Wanganui

KIWISPAN

136 Guyton Street, Wanganui

Kerri-Ann 348 0339

in association with **MORRIS & SON BUILDERS - WANGANUI**

We are proud to support **Pink Ribbon Breakfast Month**

Paul Neal & Associates

ACCOUNTANTS

WANGANUI

Making Accounting less Taxing

Proud to support **Pink Ribbon Breakfast Month**

Unit B - Suite 3 Wicksteed Terrace

06 348 9989

pneal.ltd@gmail.com

KATE JOBLIN & CO LTD

CHARTERED ACCOUNTANTS

Proudly supporting **PINK RIBBON BREAKFAST MONTH**

xero

10 Wicksteed Terrace
PO Box 7070, Wanganui
T: 06 348 7000
E: hub@teamkj.nz

CHARTERED ACCOUNTANTS AUSTRALIA • NEW ZEALAND

PKF Doyles

Chartered Accountants

WHANGANUI - OHAKUNE - TURANGI

Proud to support **Pink Ribbon Breakfast Month**

www.pkfdoyles.co.nz

GEMINI PEPPER CONSTRUCTION

Proud to support the **NZ Breast Cancer Foundation**

RESIDENTIAL / COMMERCIAL EARTHQUAKE STRENGTHENING

Cnr Hinau and Rogers Streets,
PO Box 489, Wanganui
Phone 06 344 5087
Mobile 027 438 4211
Email: office@gempep.co.nz

Jackson's Flooring Design

Service and Excellence You Can Trust!

Pleased to support the **Pink Ribbon Breakfast Month**

Corner of Wilson & Ridgway Streets
P 06 345 9059 • whanganui@flooringdesign.co.nz

NEW HOUSE AND LAND PACKAGES AVAILABLE

Call GJ's today 06 345 3563
Pop into the office at 53b Wilson St



Section sizes from 417m² to 614m²

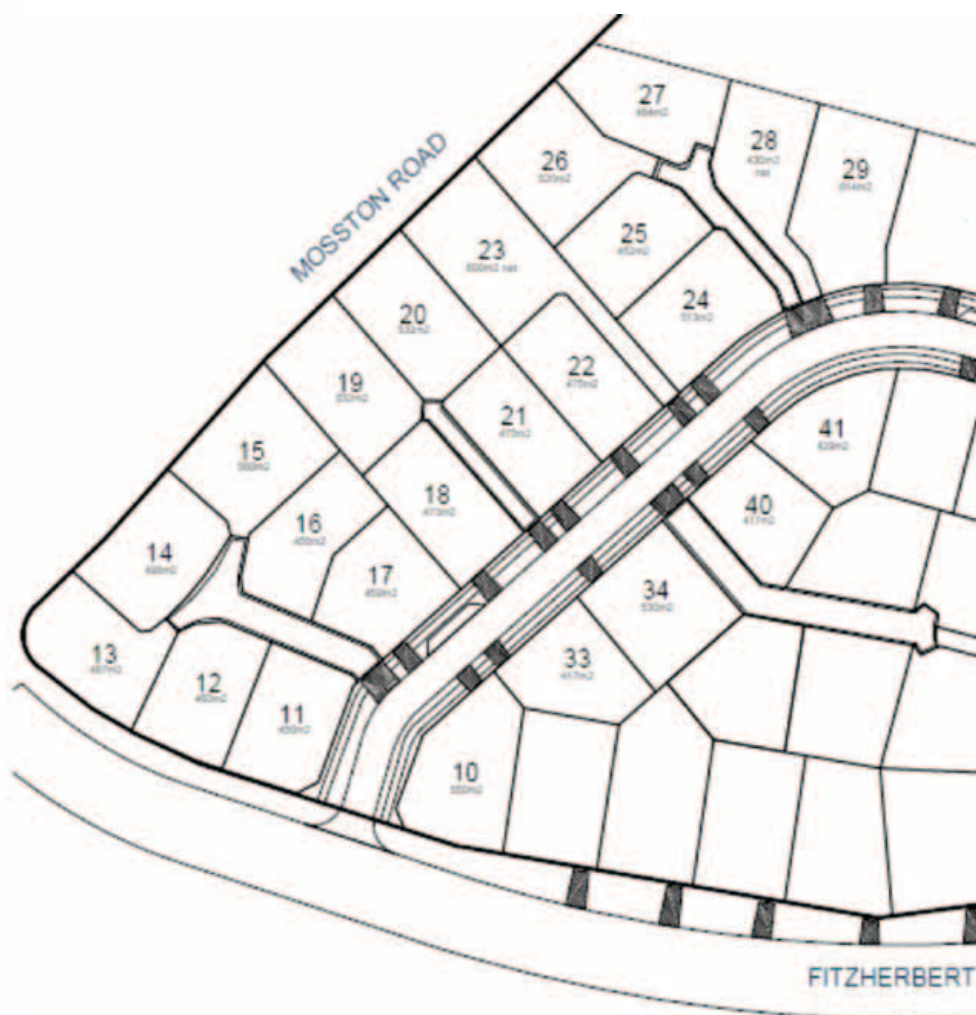
G.J. Gardner. HOMES

Imagine yourself living a life of convenience and comfort in a brand-new home, surrounded by a vibrant community.

With the Fitzherbert Ave shopping centre just around the corner and easy access to the beach and golf courses down Mosston Road, every day will feel like a vacation.

Families will appreciate the range of top-rated schools within a 1km radius, providing endless opportunities for growth and learning.

And if you're looking to design your dream home, the expert team at G J Gardner Homes will create a custom home design that perfectly fits your needs and maximizes space and natural light.



Call in and see the team at the GJ Gardner office, 53b Wilson Street TODAY!

0800 42 45 46

www.gjgardner.co.nz

G.J. Gardner. HOMES

Kerbside recycling is coming to Whanganui in July!

Households in residential Whanganui – including Fordell, Marybank and Mowhanau – will soon receive a set of three recycling crates.

Using your crates, you'll be able to recycle the following groups of material:

- ✓ Plastic & cans
- ✓ Glass bottles & jars
- ✓ Paper & cardboard

For more information, visit whanganui.govt.nz/recycling



Plastics 1, 2, 5 & cans



Glass bottles & jars



Paper & cardboard



Download on the
App Store



GET IT ON
Google Play

To report issues & keep updated
on recycling, download Antenno.



whanganui.govt.nz/recycling

Pop-up recycling information sessions this week:

- Thur 2 May: Gonville Library, 10am-12 noon
Hakeke Community Centre, 1pm-3pm
- Fri 3 May: Davis Library, 11am-12.30pm
Majestic Square, 1pm-3pm
- Sat 4 May: Whanganui River Markets, all morning



WHANGANUI
DISTRICT COUNCIL
Te Kaunihera a Rohe o Whanganui

Gaza ceasefire petition handed to District Council

By Mark Dawson

A petition with more than 2257 signatures was handed in to Whanganui District Council this week, calling on the council to support a motion for an immediate and permanent

ceasefire in Gaza.

The petition was organised by the Whanganui Palestine Solidarity Network and they will formally present and speak to the cause at a council meeting at 11.30am on Tuesday, May

7, after which councillors will debate and vote on the motion.

One of the organisers, Sophi Reinholt, said a number of councillors had signed the petition as individuals and she hoped

that sentiment would carry through when they sat at the council table.

"We only had just over two weeks to pull the petition together and people were overwhelmingly in favour of the call for a

ceasefire. We have also submitted 48 letters of support from businesses, organisations and community groups."

She said a permanent ceasefire would allow humanitarian aid agencies

and international media "unfettered and safe access to Gaza" which has been under bombardment from Israeli forces since October 7, when Hamas militants invaded southern Israel, killing 1139 people

and taking more than 200 hostages.

The Israeli assault on Gaza has killed more than 34,000 people with many thousands more missing and cities and facilities reduced to rubble.



The Spot Report

Clicker training - an introduction to a fantastic dog training method

I am frequently asked about clicker training and how it works. I am a great fan of this method of training and all my dogs have been clicker trained. One dog was so hooked on this method of training he encouraged me to try out new games and behaviours including, leg/body positioning, skateboarding, targeting, and he could back up a flight of stairs.

• Why does this training method work?

Because it uses a distinct and consistent signal to mark a desired behaviour and is then followed by a motivating reward. Because animals understand precisely which action earned the click and their reward, they learn new behaviours quickly, easily, and enthusiastically.

• Why are clickers better than just using my voice or other training methods?

There are many impor-

tant reasons. The click pinpoints the behaviour exactly and the dog then learns the behaviour amazingly quickly. The clicker provides a consistent, non-emotional marker for your dog to always receive the same information. The clicker is also distinct from other signals in the environment.

The information the click provides is retained and behaviour is remembered from one training session to the next, enabling training sessions to be short and flexibly designed. Also, unlike word cues, clickers do not convey emotionally loaded approval or disapproval to the animal - it is simply information the dog can use to earn a reward.

Because clicker training doesn't rely on punishment, force, or aversive methods to get results, it is the only known method of training to be safely used with pup-



pies even only a few weeks old. As a result:

1. Basic good manners and fun games are easily and quickly taught.
2. Training can be incorporated into daily activities.
3. Clickers are only used to teach/learn NEW behaviours.
4. Experience of "lightbulb" moments - the time when you and your puppy/dog connect through the sound of the clicker.

Training experience is not required to clicker train successfully.

Food rewards are only one way to reward/motivate your dog.

Further clicker training information can be found online at: Karen Pryor Clicker Training.

If you would like to reserve a place in my forthcoming clicker workshop, please contact me - all equipment provided.

I am strongly committed to the welfare of dogs and owner education. Since 1992 I have attended workshops and seminars (NZ & Aust), read books, and viewed DVD's, continuing to upgrade my education in the care, understanding and training of well-mannered puppies and dogs. If I can't help you and your puppy/dog I can refer you to professional vet behaviourists who can.

Marg is a Full Foundation Member of The Association of Professional Dog Trainers NZ Inc and can be contacted: (06) 343 9806 or 027 2905013

- Woofs and barks from Spot

Dog owners reminded to treat their pets for ticks

Biosecurity New Zealand is reminding dog owners to make sure their pets are up to date with their flea and tick treatment, after the parasite Babesia gibsoni was detected in a dog in the Canterbury region.

"The parasite is often transmitted by ticks, so we are encouraging dog owners to make sure their dogs are up to date with their flea and tick treatment," says Biosecurity New Zealand's chief veterinary officer Dr Mary van Anel.

Babesia gibsoni is widespread around the rest of the world, including Australia, but this is the first case in a New Zealand-bred dog. It can cause the disease babesiosis, which is not present in New Zealand. Most dogs will only experience mild symptoms, if any, but the disease can be severe in some cases.

"Along with ticks, the parasite can also be spread through dog bites, blood transfusion and through the placenta from an infected mother to her pups. In countries where Babesia gibsoni is widespread, the focus is on preventing infection by treating dogs with tick treatments or combined with flea treatments, and limiting fighting behaviour."

Dr van Anel says dog owners shouldn't be alarmed.

"At this stage we are aware of just one case of Babesia gibsoni in New Zealand. We are working hard to determine whether this is an isolated case and where it came from."

Overseas, the parasite is often found in a select group of dog breeds - Pit Bull Terriers, Staffordshire Bull Terriers and Greyhounds are the most commonly affected breeds.

Dogs without symptoms or that have recovered from infection often reach a balance where their immune system suppresses the parasite. However, this means they may still spread the parasite and may develop disease if they become immune compromised.

Biosecurity New Zealand is working closely with the owners of the infected dog to identify other dogs she had been in contact with so they can be tested. The affected dog was euthanised at its owners' request due to it being extremely unwell.

"A second dog in the



household has had blood taken for testing and early results are negative for the disease. Samples have also been taken from several dogs known to be close contacts of the infected dog and another playmate of the infected dog," says Dr van Anel.

"We're asking vets to help our investigation by contacting us if they have any suspected cases of Babe-

sia gibsoni and have been in touch with registered doggy daycare operators to alert them to the case so they can keep an eye out for ticks and remain vigilant in preventing biting and fighting between dogs."

If dog owners are concerned about their pets' health, their first port of call should be their veterinarian.



K9 Puppy Kindergarten & Intermediate Training

Puppy Classes

- 8-12 weeks - Wednesday at 5.30pm
- Fully Vaccinated 3 months and over Thursday at 5.30pm

Margarette Marshall
Ph: 343 9806 or 027 290 5013
Full Member of Association of Professional Dog Trainers NZ Inc
K9 Puppy & Dog Training is a not for profit service



Your caring animal health professionals

Providing quality services for your animals by veterinarians supporting you. You get quality health care for your animal from those who know best.

HOURS
Mon-Fri 8am - 6pm
Sat 9am - noon
Appointment required

WVS WANGANUI VETERINARY SERVICES
35 Somme Pde, Wanganui
Ph 06 349 0155 or 0800 PET VET




mybeau VET COLLECTION

Scientifically Formulated Nutraceutical Pet Health Care Supplements

Available at all good vet supply retailers.

RIVER CITY PRESS, THURSDAY, MAY 2, 2024 - 13

Youth on DREWS

PRESENTED BY

whatever



'Whatever' is celebrating this Saturday

'Whatever' is the new name for Youth Services Trust on Drews Avenue. The rebranding was co-designed with their rangitahi and is short for 'Whoever you are, where ever you are from, whatever you need.' Rosie McMenamin, manager of 'Whatever,' says, "We needed to rebrand to reach out better to youth, to get our services out there."

They offer a free health service for young people aged 10 to 25 and for

anyone enrolled at UCOL. This includes counselling, social workers and nurses from Monday to Friday and a doctor on Thursday afternoon. Their facilities in Drews Ave are central and easy for their clients to come to.

Also available is free contraception for women up to 44 years of age and a sexual health clinic.

As Rosie says, "We are the only organisation in Whanganui providing these services for youth and we have a staff of

ten."

They are introducing a range of new change therapies including 'smash room' therapy by the end of the year. This supervised therapy with protected gear is like grief therapy and is great for anger management. They already have therapy dogs and fish tanks.

There are a number of lounge rooms to relax in or to have discussions. It is a comfy, inviting, attractive space.

Youth on Drews

As National Youth Week is coming up, they decided to celebrate with a party on Drews Ave, named 'Youth on Drews.' It is on Saturday, May 4, from 11am to 3pm.

There will be bands and live music, face painting, fake tattoos, mini putt with prizes, a basketball competition organised by Sport Whanganui, art stands offering drawing therapy, things to buy, a chill zone, a smash therapy tent, a neurodiversity zone with stress balls, ear plugs and bean bags and a 'Mad Hair' stall offering haircuts of your choice.

It will be an opportunity to check things out and to enjoy yourself.

What we Want' Survey
'Whatever' recently



'Whatever' reception

carried out a survey with 1600 young people to find out what they really want. Rosie says "There are amazing insights" and these will be presented to

invited guests: health and education representatives from NGO's, schools, Te Whatu Ora and Te Oranganui.

The survey results will

lead the future strategic direction of 'Whatever', and other similar organisations around New Zealand are also looking

at the results. Rosie says, "There has been an incredible amount of mahi which has gone into this survey."

Come join the party this Saturday, 11am-3pm

Live music, food stalls, face painting, mini putt, basketball, drawing therapy, haircuts and more!



HARRY-D
MC & EVENTS
Mistress of Ceremonies

- Community Events
- MC Services
- Youth Events
- Music and Entertainment
- Event Planning



0204 108 7720

Harrydmcevents@gmail.com



Proud to support
Whatever

FAMILY VIOLENCE SAFETY AND SUPPORT

Choose a safer and brighter future for your whānau

Family Works is here to support you to keep yourself and your tamariki safe and violence free. We provide Ministry of Justice approved safety programmes, counselling, parenting education and group support programmes, including specialist services for both adults and children.



To learn more call us on 06 345 6681 or visit www.familyworkscentral.org.nz



MOBILE CUTS IN WHANGANUI

Call 022 082 5445 or email Samanthatoon4@gmail.com

SATURDAY 4TH MAY 11AM - 3PM



Day with 'Youth on Dreads' street party



Outside 'Whatever' – Harry (MC for Youth on Dreads), Rosie and Hannah

Jigsaw whanganui

kaupapa whānau - thriving children, flourishing families



Proud to support Whatever

Our support network is here to help all whānau



Social Work



Family Harm Programmes



Programmes for Parents



Advice and support information for families

We're here to talk
Tel 06 345 1636

jigsawwhanganui.org.nz

Ph 06 345 1636 | Suite 10, 236 Victoria Ave, Whanganui
Email: admin@jigsawwhanganui.org.nz

Youth on DREWS

PRESENTED BY



SKATEBOARD SCHOOL | BMX DISPLAYS
SMASH THERAPY TENT
ART STANDS | CHILL ZONE
MINI PUTT | BASKET BALL COMP
BANDS & LIVE MUSIC
FACE PAINTING | MAD HAIR STALL
TATTOOS | THINGS TO BUY
EPIC RAFFLE

INCLUDING NINTENDO SWITCH & SKATEBOARDS

SATURDAY 4TH MAY 11AM - 3PM



Rebus Club - Correction

In last week's River City Press, we said that the Pukenamu Rebus Club was the only active club in Whanganui.

However, we have been informed that the Rebus Club of Wanganui is still very active and very vibrant. In fact, it was the town's original Rebus Club and is looking forward to celebrating its 40th anniversary later this year.

We apologise for the mistake.

Film followed by panel discussion on Te Waikoropupū Springs

Te Waikoropupū Springs are the largest freshwater springs in New Zealand, the largest cold water springs in the Southern Hemisphere and contain some of the clearest water ever measured. They are located in Golden Bay, near Tākaka.

A 20 minute documentary – 'The Unseen' showcases the beauty and sacredness of the springs and speaks of the importance of effectively enforcing a Water Conservation Order (WCO), the highest legal protection, granted in 2023 by

the Environment Court.

It will be shown in Whanganui on Thursday, 9 May, at 5.30pm at the Davis Lecture Theatre. Entry is \$10 or koha.

Those interested in the protection of freshwater quality and the workings of the aquifers will find the documentary particularly interesting.

After showing the film, there will be a panel discussion with people behind the WCO as well as Kevin Moran, who features in the film.

Marion Sanson, who has organised the screen-

ing, says, "I was also involved in getting the WCO, and it's very topical at the moment as the Te Waikoropupū Springs are at risk with the latest Fast Track Approvals Bill."

The springs are notable for the volume of water discharged from the eight main vents. It is estimated that 14,000 litres of water are produced per second, approximately enough to fill 40 bathtubs.

The Springs are a taonga (treasure) and wāhi tapu (a sacred place) for



Māori, both locally and nationally. The legends of Te Waikoropupū are told in the stories of Huriawa, its taniwha (guardian spirit).



Morgan Sports Car Club Annual Meeting - Whanganui, May 9-12

Public Display
Next Saturday 11 May
at the
War Memorial Centre
10am - 12noon



Morgan Sports Cars in Whanganui from May 9-12



The iconic Morgan sports car on display.



MECHANICAL RESTORATIONS VINTAGE & CLASSIC SPARES (1980)

For Engine & Auto Parts (1912 - 1997)

English • American • Continental
Australian • Japanese
Veteran • Vintage • Classic • Modern

Bruce Ardell

RD7, Fordell, Wanganui
Phone (06) 342 7713

Founded in 1910 in the Malvern area of Worcestershire in the United Kingdom, the Morgan car company still produces 850 cars each year and still uses wood in the body shell, as it has for more than 110 years.

Henry Morgan's classic car has become iconic -- the waiting list for one of these hand-made beauties is approximately six months and has been as long as ten years.

In New Zealand, the vehicle is celebrated by the Morgan Sports Car Club of New Zealand which has a membership of around 200 and organises events in both the North and South Islands throughout the year.

And next week more than 20 Morgans will be in Whanganui as the club converges for its annual meeting.

The enthusiasts will be staying in the river city from May 9-12, with a rally to Bushy Park Tarapurui and other outings planned, and the annual meeting taking place at the War Memorial Centre on Saturday, May 11, on which day the cars will be on show at the centre from 10am to 12noon.

The local flag is being flown by Whanganui owner Bernard Reuters who, with his partner Anne Hanna, has been involved in organising the event.

WANTED FOR SELLING TOO MANY HOUSES

RUMOURED TO BE WORKING
FOR HARCOURT'S WHANGANUI

WHANGANUI - BULLS - HAWERA - MARTON - BRUNSWICK - RAETIHI

LAST SEEN DRIVING THIS VEHICLE



Rob Bennett

Harcourts

Whanganui

Rivercity Real Estate Licensed REAA 2008

Mobile 021 071 0016 Business 06 348 4444
Email: rob.bennett@harcourts.co.nz



DEVON Homes
More than just a house

We welcome the
Morgan Car Club to Whanganui.



Looking forward to supporting the
car display at the War Memorial Centre.

165A Great North Road, Wanganui.
06 345 2393 or 027 449 5125
reuters@devonhomes.co.nz

Don't forget

Mother's Day

Happy Mother's Day!

NEXT SUNDAY 12 MAY

Mother's Day celebrated since ancient Greek era

Mother's Day is celebrated across the world, in more than 50 countries, though not all countries celebrate it on the same day. In New Zealand it is Sunday, May 8.

Other countries that celebrate Mother's Day on the second Sunday of May include Australia, Denmark, Finland, Italy, Switzerland, Turkey and Belgium. In Mexico and many parts of Latin America, Mother's Day is celebrated on May 10 of each year. In Thailand, it is celebrated on 12 August, the birthday of the current Queen.

Arguably, the tradition of a day to celebrate mothers can be traced back to the times of the ancient Greeks, who held festivities to honour Rhea, the mother of the gods.

Early Christians cel-

brated the fourth Sunday of Lent as a Mother's festival to honour Mary, the mother of Christ.

During the Middle Ages the custom developed of allowing those who had moved away to visit their home parishes and their mothers on Laetare Sunday, the fourth Sunday of Lent. This became Mothering Sunday in Britain, where it continued into modern times, although it has largely been replaced by Mother's Day.

In its modern form, Mother's Day originated in the United States. Anna Jarvis of Philadelphia, whose mother had organized women's groups to promote friendship and health, originated Mother's Day.

On May 12, 1907, she held a memorial service at her late mother's church



in Grafton, West Virginia. Within five years virtually every state was observing the day and in 1914, U.S. Pres. Woodrow Wilson made it a national holiday.

Although Jarvis had promoted the wearing of a

white carnation as a tribute to one's mother, the custom developed of wearing a red or pink carnation to represent a living mother or a white carnation for a mother who was deceased.

Over time the day was expanded to include others, such as grandmothers and aunts, who played mothering roles. What had originally been primarily a day of honour became associated with the sending of cards and the giving of gifts, however and, in protest against its commercialization, Jarvis spent the last years of her life trying to abolish the holiday she had brought into being.

~ Gifts ideas ~

Some ways to show your appreciation of what your mother does.

Lunch & Dinner - How about a Devonshire tea at Bushy Park for a special treat?

Drop-off baking - If mum lives locally, why not drop off some baking?

Make her a virtual photo album - If Mum is a bit too far away for a drop-off, you could try your hand at making her a virtual photo album with online photo album tool Flipsack or a classic PowerPoint presentation. Combine some of your favourite memories, pictures and quotes.

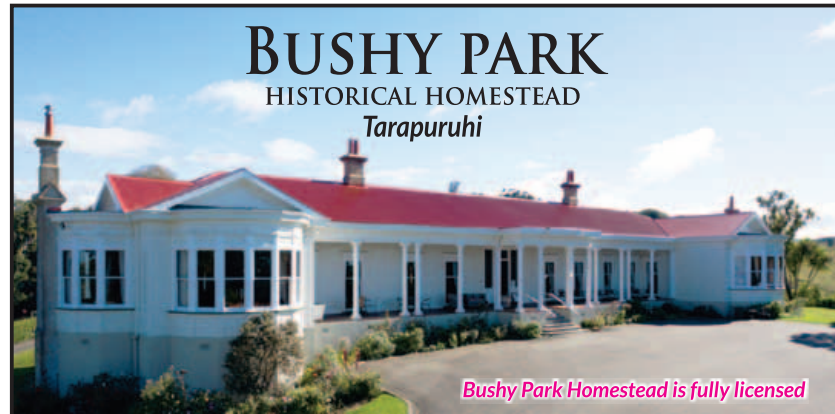
Let her sleep in - Letting mum have a well-deserved sleep-in is the one non-negotiable this Mother's Day.

Vouchers - Buy a voucher for Mum to redeem in the

future. It could be for pampering or clothing... up to you.

Get in touch through zoom or skype if she lives out of the country or if not close enough to travel

Gifts - Check out the advertisers on this page for ideas for the perfect gift for your mum.



BUSHY PARK
HISTORICAL HOMESTEAD
Tarapurui

Bushy Park Homestead is fully licensed

Happy Mother's Day!

Come and enjoy Mother's Day at Bushy Park

Devonshire Tea
Afternoon Tea
High Tea

10.00am - 3.00pm
Wednesday - Sunday

Phone or email your booking: 06 342 9879
or email: bushyparkbbwanganui@gmail.com
BOOKINGS ESSENTIAL

www.bushypark.nz
791 Rangitatau East Rd, Kai Iwi, Whanganui

Jade
Traditional Thai Massage
for good health

Thai Traditional Massage	\$70 (1 hour)
Thai Traditional Massage	\$40 (30 min)
Thai Oil Massage	\$80 (1 hour)
Foot Massage	\$70 (1 hour)
Neck & Shoulder Massage	\$20 (15 min)

Gift vouchers available
Monday - Saturday 10.30am - 6.00pm

64 Guyton Street, Wanganui. Phone 348 8466
www.jadethaimassage.co.nz

NAILS
EYEBROW MICROBLADING
EYELASH EXTENSION

Spa Pedicure Acrylic Nails
Shellac Gel Manicures
SNS Nails

SNS DIPPING POWDER
Contains Vitamin C & Calcium
Maintain Healthy Strong Nails
Lasts 3-4 weeks

VOUCHERS AVAILABLE NOW FOR *Mother's Day!*

afterpay
AVAILABLE

136 Victoria Ave,
Phone 06 347 2909

JUST LOOKING GIFT CARDS

The perfect gift to give this Mothers Day!

E-GIFT VOUCHERS ALSO AVAILABLE.
DIRECT TO MUMS EMAIL ACCOUNT THIS MOTHERS DAY!
SIMPLY VISIT OUR WEBSITE TO PURCHASE.

www.justlooking.nz

136 VICTORIA AVE | WANGANUI | 0800 488 474 | OPEN 7 DAYS

Your Health & Wellbeing

‘Nature’s tranquilliser’ for every family member

First aid training can help save lives

Life's no fun when stress and tension get in the way!

Whether it's an upcoming test or exam at school, work meetings, finances, or relationship troubles, stress can weave its way into the lives of adults and children alike, leaving them tense, sick or not sleeping well.

More and more people are using tissue salts as



Find your calm

240s NOW **\$20³⁹** was \$23.99

SAVE 15%

HEALTH 2000 WHANGANUI
58 Victoria Ave
(06) 345 6288 + h2kwanganui@gmail.com
www.health2000.co.nz

Health 2000

an effective natural remedy to support their health and wellbeing in times of stress. But did you know that tissue salts are beneficial for pets, too?

Pets can often become anxious, stressed, tense and nervous, just like humans do. The good news is that tissue salts are just as effective for pets as they are for humans! They can be used for dogs, cats, horses and even smaller animals like birds, rats, mice and hamsters.

New Era No. 6 Kali Phos is a family-friendly remedy that helps support symptoms

of stress and anxiety and promotes relaxation and calm – and it's safe for our fur family members too! Known as 'Nature's Tranquiliser,' this powerful nutrient helps promote feelings of wellbeing and calm. Use it for highly strung or anxious pets or for support during stressful situations like visits to the vet, thunderstorms, moving home or when leaving them alone.



Your First Aid training specialist

Would you know what to do if someone was injured? Links Training currently offers levels of first aid training for individuals or workplaces. Businesses are welcome to attend their public classes, all of which are NZQA assessed.

Public classes are run at venues throughout the lower North Island, including Whanganui, Palmerston North, Levin, Kapiti, Masterton, and Wellington. The next Whanganui class is scheduled for Thursday, 6 June. This eight-hour class will enable individuals to have the skills and confidence to assist during a medical emergency.

Electrical Workers

Knowing how critical it is for Electrical Workers to renew their compliance on time in order to continue to practice, Links also offers electrical compliance training.

The Electrical Workers Registration Board (EWRB) requires all electrical workers to ensure their ECT CPR/BFA is current at the time of their practicing licence expiry

date. This training consists of four hours of ECT training with two hours of CPR and basic first aid.

As an EWRB training provider, Links in conjunction with *Upstage Electrical Training, aspires to deliver as many training opportunities as possible to meet this requirement.

The next EWRB Whanganui date is Thursday 23 May, and Links recommends booking early to secure a space. Other venues and dates can be found on their website.

Whatever your training needs, Links Training has it covered. www.links-ltd.co.nz

Would you know what to do if someone is injured?

+ First Aid Training

Whanganui: Thursday 6 June

N.B. Businesses are welcome to attend our Public Classes, all NZQA Accredited!

Electrical Workers EWRB Competency Training

Thursday 23 May

Book online at: www.links-ltd.co.nz

LINKS

We train, you gain!



Freephone: 0508 487 246

training@links-ltd.co.nz

www.links-ltd.co.nz

12 WEEK WEIGHT LOSS CHALLENGE

- STARTS THE WEEK OF 13TH MAY
- ENTRY COST \$30
- INCLUDES FREE 3D BODY SCAN
- DO NOT NEED TO BE GYM MEMBER
- WEEKLY WEIGH INS

WIN \$500!



JOIN HERE

CLUB FITNESS
Body for Life

REGISTER AT CLUBFITNESS.CO.NZ / CHALLENGE

CONGRATULATIONS TO OUR LAST WINNER, JAMES.

WHO DROPPED OVER 20KGS

THIS IS HIS SCAN OUTLINES, BEFORE AND AFTER



Honey for Health



ST JOHNS HILL HONEY

2A St Leonard Street, Whanganui

Phone 027 454 5444

Your Health & Wellbeing



NZ MUSIC MONTH

May 2024

The Return of the Nairobi Trio

Do you wake up feeling unrefreshed?
You may have Sleep Apnoea



Sleep Apnoea Awareness Day - May 5

Lynda Aplin, owner of Sleepwise, has been involved in helping people sleep better for 20 years. Her background is in nursing, and when the opportunity came to specialise in the area of better sleep, she chose to do so and has seen the demand for her services grow. She says, "It is estimated that 10% of the population has a sleep issue."

The focus is on sleep apnoea. This is when your airways collapse while sleeping. Snoring is the sound you make when your airways are restricted. Fortunately, the brain realises what is happening, and you wake up. Lynda says, "It can hap-

pen hundreds of times during the night."

Oxygen levels can be low, which can impact on the heart and other parts of the body. You may wake often, sometimes gasping for air, need to get up the toilet many times and people can wake feeling very unrefreshed, sometimes with a headache and sleepy during the day.

Sleep apnoea can have an impact on heart conditions and diabetes, and can lead to weight gain and can lead to accidents due to sleepiness and poor concentration. There is also a link with Alzheimers/Dementia.

It is more common in people who are overweight.

You can be tested for

sleep apnoea, which involves wearing a monitor overnight to gather objective data. Treatment depends on how severe the apnoea is. It could be weight management, surgery or wearing a mouth guard but "the gold standard is CPAP treatment (Positive Airway pressure.)"

CPAP involves using a small, quiet machine that blows air into the nose through a sealed mask. The process holds your airways open. The result is the end of snoring, sleeping all night and feeling so much better.

Lynda has a contract with the DHB through which machines may be provided, depending on a set criteria.

It is a long-term condition, and parts such as the masks will need to be replaced. Lynda is available to help.

If it is a simply a case of snoring, Lynda can suggest several anti-snoring solutions.

How safe are your kids pajamas?

All children's nightwear is legally required to have the appropriate fire hazard labels attached before they can be sold. This applies to both new and secondhand kids' pajamas. There are only two kinds of labels that can be used:

White label (safest)
Nightwear made from low fire hazard fabrics and those that are snug fitting is marked with a white label that reads: "CAUTION KEEP AWAY FROM HEAT AND FLAME".

Red label (high fire danger)
Nightwear with a higher fire hazard risk is marked with a red label that reads: "WARNING HIGH FIRE DANGER KEEP AWAY FROM HEAT AND FLAME".

Please choose wisely for your child's safety

We are so pleased to be welcoming back the fantastic Nairobi Trio for our May Club Night. This is a band of exceptional talents. Described as New Zealand's favourite "Jazz Entertainers", they have thirty-five years touring experience across the globe, playing in all manner of settings – village halls, theatres, festivals – you name it, they've played it! They perform a dynamic, engaging live show, with a breadth of repertoire. Always playing to the crowd, the trio showcase skilfully crafted original material and reimagined standards, all delivered in their inimitable style. The trio is comprised of John Quigley, leader and guitarist, Richard Adams, violinist and Aaron Coddell bassist. All three sing and have a great time telling tales and playing together.

Last year's performance was one of the highlights of our season, providing us with a most sensational musical experience. The evening was remarkable for several reasons. The line-up of violin/guitar/bass/vocals, along with the electronic effects, produced a magical soundscape. The musicians



Nairobi Trio performing this Sunday

were entertaining and their patter was simply charming. Their interaction with the audience was engaging. Richard's virtuosity on violin was a joy to behold. They sold more CD's than any group has, and for good reason – the CD makes for great listening at home.

As a result of the reception they received, we asked them back and John organised a tour around their date in Whanganui.

For anyone wanting to catch the band outside Whanganui, they are performing: Thursday, 2 May, at the Events Centre in CARTERTON; Friday, 3 May, at St Peters Hall in PAKAKARIKI; Saturday, 4 May, at the Firebird Café in LEVIN; Monday, 6 May, at the 4th Wall Theatre in NEW PLYMOUTH.

Come out this Sunday and enjoy live music. This is one show that is definitely not to be missed!

Sunday, 5 May, 6:30 pm @ St Johns Club, 158 Glasgow Street

Doors open at 5:30pm for meals, snacks and drinks. General Admission \$25, Members \$15 with Memberships available at the door.

Schola Sacra Choir celebrating 50 years

2024 marks 50 years since Schola Sacra Choir started in Whanganui. The choir consists of about 35 members, and its repertoire of timeless classical and sacred music has stretched through several centuries and many composers, and musically challenged the choir to perform well. The music is in four-part harmony, sometimes more, and is often unaccompanied, although the choir does also sing with organ or orchestral accompaniment.

Schola Sacra has had a relatively small number of musical directors, and the late Vincent James remains the longest-serving conductor (1977-2000). Roy Tankersley also had a long tenure (2004-2018) and handed over the role to current musical director Iain Tetley, who has a fine tenor voice and, on occasion, will also sing solo roles with the choir.

Celebrations of the choir's 50th anniversary began with a trip to Wellington early in April to sing Evensong at St Paul's Cathedral. Other events planned for later in the year include a September concert featuring past conductors' favourite pieces and a dinner in November. Coming up in June, however, is a concert performance of Mendelssohn's oratorio Elijah in Christ Church Anglican Church on Saturday 22nd at 2pm, with organist and soloists including Linden Loader.

New song by Terry Sarten online

Whanganui singer-songwriter Terry Sarten – never short of a perceptive or occasionally controversial insight – has a new song and video online with a distinctly topical edge.

Will It Rain? is available on his website -- www.terrysarten.co.nz/ -- and on YouTube, and Terry comments: "In part of the world today it is a matter of survival to watch the sky for the deadly rain that falls as rockets, bombs and missiles and fear the siren sound. It is the innocent civilians who suffer."

The video by Whanganui local Daniel West features footage from conflicts around the globe.

NEW MEMBERS WELCOME

Rehearsals
Tuesdays 7.30pm

Led by our inspiring conductor
Iain Tetley



Schola Sacra Choir
for more information contact
Louisa Craig 06 345 5747

NAIROBI TRIO

St Johns Club
158 Glasgow St,
Whanganui
Sunday 5 May
from
6.30pm-8.30pm



Doors open at 5.30pm for meals, snacks & bar.
Admission: Members-\$15 Non-Members-\$25
Enquiries to Ken, phone 022 431 5434
www.wanganuijazz.org.nz - All Welcome - Pay at the door.

"Bright, exciting, foot-tappin' fun."



Home-Based Sleep Studies:	Level 3.
CPAP Specialist:	Trial, sales & support.
Rental & Support packages:	Ideal for those eligible for disability allowance.

**Lynda Aplin RN, MN
Sleep Nurse Specialist**
Phone: 06 3479220
lynda@sleepwise.co.nz

**Jun Trocio
Sleep Physiologist**
Phone: 06 2801369
JunT@sleepwise.co.nz

Suite 3, 66 Ingestre Street, Whanganui

Whanganui paddlers set to make waves at Waka Ama World Sprints

In the serene waters of the Whanganui River, two paddlers have been quiet-

ly honing their skills, their journey culminating in a remarkable feat – qualifying

to represent New Zealand at the Waka Ama World Sprints in Hilo, Hawaii this

August. Murray Carey and Peter Wilson, members of the Whanganui Outrigger Canoe Club, have not only secured their spots through sheer determination but are also breaking age barriers with their extraordinary achievements.

Murray Carey's journey into Waka Ama was sparked by the enthusiasm of friends and the allure of a new adventure. "I had been rowing for many years," Murray explains. "Two of my Aramoho rowing mates had taken up Waka Ama and suggested I give it a try." One of them had been persistently encouraging him for years. "Eventually I relented and started paddling in March 2023.

Murray quickly immersed himself in the sport, eventually purchasing a single Waka to aid in his training. His dedication and hard work paid off, as he achieved a respectable time at Regionals. However, it was his second race ever in the single at the Nationals, where he was determined to do well. Murray's determination led him to clinch a bronze medal at Nationals, propelling him to qualify for the World Championships in the Master 70 Men Division.

Peter Wilson, drawing from his extensive canoeing experience, reminisces about his introduction to Waka Ama. "I was invited to join a W6 crew for the Masters Games. I had experience in canoeing, paddled the Whanganui River for many years and thought it would suit me," he shares, highlighting the seamless transition into the sport.

Peter's journey to the World Championships was equally impressive, as he not only secured a spot



Peter Wilson

by winning silver in the Master 80 Men Division, but also demonstrated his commitment to excellence. "Never expected to represent NZ in any sport," Peter admits. "When told I had the opportunity to do so, I was determined to do all I could."

Their achievements not only highlight their personal triumphs but also serve as an inspiration to others, especially those considering taking up Waka Ama (Outrigger Canoe). As Murray and Peter gear up to represent New Zealand on the international stage, they carry with them the hopes and pride of their community. Their journey exemplifies the inclusive and empowering nature of Waka Ama, a sport that welcomes enthusiasts of all ages and backgrounds.

Peter Wilson's representation in Hawaii will mark a historic milestone as the oldest paddler representing New Zealand, showcasing the enduring spirit and determination that transcends age. As autumn sets in and winter approaches, Murray and Peter are undeterred, continuing their rigorous training with their sights set on gold.

So, to anyone contemplating dipping their paddle into the waters of Waka Ama, take heed of Murray and Peter's advice – don't hesitate, take the plunge, and embark on an adven-

ture that promises camaraderie, fitness, and the thrill of chasing dreams. Who knows? You might just find yourself on the path to representing your country on the world stage.



Murray Carey

It takes more than luck to get a duck



With an estimated 60,000 New Zealanders expected to take part in the opening weekend of duck season, a safe, and enjoyable weekend hunting has nothing to do with luck.

Te Tari Pūreke – Firearms Safety Authority, which chairs the Recreational Firearms Users Group, says, overall game bird hunters in New Zealand have a good safety record, but they are urging duck hunters to continue following firearms safety practices to ensure everyone in and around the maimai has a great day.

"The opening weekend of the gamebird season is the busiest day in the duck hunters' calendar," says Te Tari Pureke Director of Partnerships Mike McIlraith. "Get-

ting a good bag of ducks and having a safe and enjoyable day hunting has nothing to do with luck.

"The maimai can become a busy place on opening morning, so it pays to get everyone together and make a plan for the morning before the birds start coming in. Get everyone to agree in advance to their safe firing zones, and then stick to them.

"Duck hunters should stay aware of where everyone in the maimai is and always point their firearms in a safe direction. If there are more shooters than can safely shoot at once, agree to take turns throughout the day."

Mike McIlraith says many of the basics of safe firearm use can help prevent an accident from

happening: "Treat every shotgun in the maimai as loaded, keeping the muzzle pointing away from yourself and other people, finger off the trigger, and having control of the shotgun at all times.

"Shotguns that are not in use should be in a firearm holder/rest, unloaded, and with the muzzle pointing in a safe direction. If you are finished shooting, completely unload your firearm and put it away. People should avoid leaning their shotguns where they can slide or be knocked over and accidentally go off."

Mike McIlraith also reminds hunters that alcohol and firearms don't mix. "Save the refreshments until after you've safely locked your guns away for the day."

Pigeon results

The St Johns Club Wanganui Pigeon Racing Adjunct held its fourth race of the 2024 Young bird season with a race from Otorohanga. The race attracted 135 pigeons from nine flyers. The winning pigeon from the loft of Alois Verstraeten, of Whanganui, covered the 192km in 2hr 35min 8sec to record an average speed of 1237.41 meters per minute (mpm) or 74.24kph. The pigeons experienced fine weather conditions on their flights to Waverley (183km), Whanganui and Marton (208km).

Results were: Alois Verstraeten of Tongariro Loft (Whanganui) 1237.41mpm or 74.24kph; Heather Verstraeten of Tongariro Loft (Whanganui) 1236.35mpm or 74.18kph; Dave Lacy (Whanganui) 1228.83mpm or 73.73kph; B and A Fairweather (Whanganui) 1228.53mpm or 73.71kph; Jim Pullins (Whanganui) 1221.73mpm or 73.30kph; Don Lacy (Whanganui) 1206.90mpm or 72.41kph; Brent Miller (Waverley) 1198.71mpm or 71.92kph; Shane Gudopp (Marton) 1177.92mpm or 70.67kph; Benedict Galandi (Whanganui) 1139.00mpm or 68.34kph.

The St Johns Club Wanganui Pigeon Racing Adjunct held its third race of the 2024 season, with a race from Otorohanga. The race attracted 152 pigeons from nine flyers. The winning pigeon from the loft of Shane Gudopp, of Marton, covered the 207km in 3hr 22min 6sec to record an average speed of 1026.67 meters per minute (mpm) or 61.60kph. The pigeons experienced mixed weather conditions on their flights to Waverley (183km), Whanganui (192km), and Marton.

Results were: Shane Gudopp (Marton) 1026.67mpm or 61.60kph; Alois Verstraeten of Tongariro Loft (Whanganui) 1021.09mpm or 61.26kph; Heather Verstraeten of Tongariro Loft (Whanganui) 1020.72mpm or 61.24kph; Benedict Galandi (Whanganui) 983.15mpm or 58.99kph; B and A Fairweather (Whanganui) 979.21mpm or 58.75kph; Don Lacy (Whanganui) 978.69mpm or 58.72kph; Brent Miller (Waverley) 939.31mpm or 56.36kph; Dave Lacy (Whanganui) 911.84mpm or 54.71kph.

Golf results

Wanganui 9 Hole Golf Club

16/4/24 – Putting S Kosmala (11) D Harrison (15)

23/4/24 - 4 Ball Best Ball (Net) K How & J Thomson (30) on c/back S Kosmala & L Dunlop (30)

30/4/24 (net) S Mangan (32) P Follows (40); (Stblfd) S Mangan (24) R McKenzie 16



National Sensation to grace stage this Friday at Musicians Club

Wellington-based duo NATIONAL SENSATION is coming to Whanganui as part of a series of performances that includes Wellington, Greytown, Petone and Paekākāriki. They bring a fresh sound with their unique blend of kiwiana-indie-folk-rock-alternative-pop music. The two singer/songwriters, Mike Robinson on guitar and Charlotte Shade on keyboards, will join forces with percussion maestros Jesse Kearse and Rupert Snook, bringing a big sound that will resonate throughout the hall. The band wants you to know that "we love your town and are keen as for a laugh and a boogie with you all".

This is the start of Music Month in Aotearoa New Zealand, and the May Club night is sure to be buzzing with creative energy. Last month saw the debut performance of Brian Baker's Whanganui project BB & the Bullets with Johnny Keating on bass and Brad McMullan on drums. They made



National Sensation band to perform Friday

a sensational sound and will be back again at the open mic session, which is proving to be the stomping ground for more and more of our local talented musicians.

The month will feature the club's second annual songwriting competition, with a public performance on Friday, 31 May, that will be recorded live. This will be a first for the club and points to the ambition that is bubbling away behind the scenes. Should you be interested in taking part, contact Annie at whanganuimusicians@gmail.

Come down to the club this Friday night for an evening of great entertainment. For those of you who have yet to experience the 'first Friday of the month club night', it is the right time to venture into a world that is 'all about the music'. Bring the family. Everyone is welcome. There is a bring your own food and drink policy. No fuss, just fun.

Friday, 3 May, 7pm @ Whanganui Musicians Club, 65 Drews Ave, \$15 General Admission, Members \$10, Memberships available at the door.

Quay Art exhibition in time for Mother's Day gifts

With Mother's Day approaching, you might be looking to buy that extra special something as a gift – what better place to start than at an exhibition of original art pieces by local artists in the back gallery at the Whanganui Arts Centre, 19 Taupō Quay.

Quay Art evolved almost six years ago when a group of like-minded artists attending courses through Whanganui Community Education decided to form a group that would meet weekly to practise the skills they had learned.

Many did not have a suitable place at home to paint, so the Awa room in the Whanganui Art Centre was chosen and it wasn't long before the numbers grew, and it was possible to run both a Tuesday and a Thursday group. Many members have attended other courses in and out of Whanganui over the years.

Eight members have contributed over 30 paintings. Most are either wa-



Celeste Ventura with two of her abstract paintings.

ter colours or acrylic, and they cover a wide range of subjects from landscapes to motorbikes and vans, from plants, leaves, flowers to buildings and abstracts. A couple of the landscapes are painted in cubist form, creating an impact. There are also cards available for sale.

one's taste. The exhibition closes this coming Sunday, 5 May, at 4.00pm.

River City Press
- the good news paper
37 Ingestre St - phone
Open 9am-5pm Monday to Friday
email: rivercitypress@xtra.co.nz

Welcome to ARAMOHŌ

~ Jerry Francis opens JF Hair in Aramoho ~

Jerry Francis is an experienced hair stylist with overseas experience in London, where he worked for 19 years, before returning to Tauranga because of his father's illness. While he loved all the opportunities in the UK and Europe, he decided to stay in New Zealand.

He rented a chair in a

salon in Tauranga and then opened up his own salon from home. He says, "A home salon has so many advantages for both the hairdresser and the clients. There is normally free all day parking, it becomes personal working one to one, without the chatter and background noise. It is a peaceful working en-

vironment."

Jerry came down to Whanganui in 2021 to take up an opportunity to buy a house with friends. After working in a local salon, Jerry had the chance to go back to working from home.

It is not his home, but a home at 202 Somme Parade – in a lovely big white house that overlooks the awa. It's a fully functional registered salon and was

previously used as such. Jerry is able to provide all aspects of hairdressing as he is a fully qualified all-round hair dresser for both males and females.

JF Hair is by appointment and is open from Tuesday to Saturday from 9.30am and with late nights on Tuesdays, Wednesdays and Thursdays.

Jerry has got involved with Amdram theatre,

styling the wigs for their production of Phantom of the Opera and will be doing the hair of the lead, Nancy in their upcoming production of 'Oliver.'

He retains his links to Tauranga, going back every two months to not only visit his mother but also to provide hair dressing services to his continuing clients from that city.

Jerry can be contacted on 021 0223 8599.



JF Hair owner, Jerry Francis

JF HAIR

BY APPOINTMENT

10% OFF ALL PRICES FOR NEW CLIENTS THAT BOOK IN MAY

JERRY FRANCIS
021 0223 8499
202 Somme Parade



Churton School

ENROL TODAY

or email office@churton.school.nz
Burmah Street, Aramoho, Wanganui



SELF STORAGE

Harcourts Whanganui

Easi-stor SELF STORAGE

KAIKOKOPU RD WHANGANUI

NOW MANAGED BY

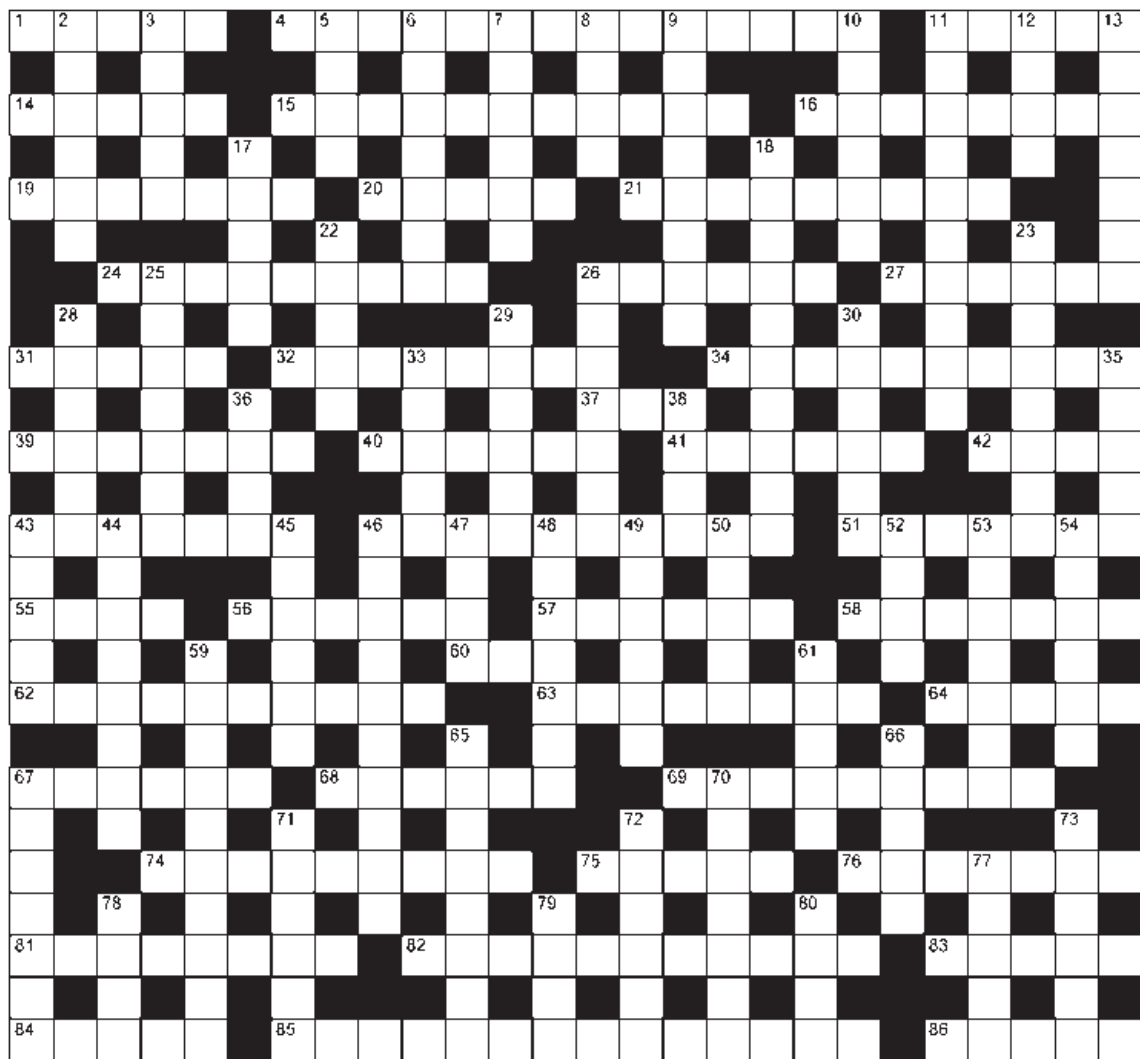
Harcourts
Whanganui RIVERCITY Real Estate Licensed REAA 2008

Phone 06 349 0883



Jumbo crossword

- ACROSS**
- 1 Undress (5)
 - 4 Depressed (4,2,3,5)
 - 11 Cast metal bar (5)
 - 14 Absolutely necessary (5)
 - 15 Agree to a compromise (4,7)
 - 16 Aubergine (8)
 - 19 Optimistic (7)
 - 20 Arms, legs (5)
 - 21 Arena fighter (9)
 - 24 Line of descent (9)
 - 26 Highwayman (6)
 - 27 Lemon acid (6)
 - 31 Risqué (5)
 - 32 Salve (8)
 - 34 Without caution (10)
 - 37 Court (3)
 - 39 Took a stand against (7)
 - 40 Short, light sleep (6)
 - 41 Tooth coating (6)
 - 42 Phonograph record (4)
 - 43 Actor's assistant (7)
 - 46 Food poisoning (10)
 - 51 Deluge (7)
 - 55 Rub with a cloth (4)
 - 56 Get (6)
 - 57 Clothes maker (6)
 - 58 Expressionless (7)
 - 60 Long fish (3)
 - 62 Captaincy (10)
 - 63 Eating disorder (8)
 - 64 Berate (5)
 - 67 Motorist (6)
 - 68 Horrified (6)
 - 69 Alert (2,3,4)
 - 74 Guidelines, principles (9)
- DOWN**
- 2 Camera stand (6)
 - 3 Fatuous (5)
 - 5 Sign of something to come (4)
 - 6 Gauze (7)
 - 7 Handy (6)
 - 8 Handle of knife, axe (4)
 - 9 Time limit (8)
 - 10 Cue (6)
 - 11 Made do in a makeshift way (10)
 - 12 Pleased (4)
 - 13 Gigantic (7)
 - 17 Toned down (5)
 - 18 Ethiopian capital (5,5)
 - 22 Earthenware beer mug (5)
 - 23 Spotless (8)
 - 25 Laborious (7)
 - 26 In the space separating (7)
 - 28 Mollycoddle (6)
 - 29 Twist out of shape (6)
 - 30 Subtract from (6)
- ACROSS**
- 33 Pacific country (5)
 - 35 Sailboat (5)
 - 36 Festival (4)
 - 38 Colourful gemstone (4)
 - 43 Wooden joining peg (5)
 - 44 Stress (8)
 - 45 Strong and sturdy (6)
 - 46 Melted letter sticker (7,3)
 - 47 Row (4)
 - 48 Endure beyond (7)
 - 49 Newspaper chief (6)
 - 50 Baggy (5)
 - 52 Exposed (4)
 - 53 Revolutionary, markedly new (7)
 - 54 All but (6)
 - 59 One on foot (10)
 - 61 Correct (5)
 - 65 Spanish dance (8)
 - 66 Home (5)
 - 67 Shortfall (7)
 - 70 Atomic (7)
 - 71 Swamp (6)
 - 72 Fortified building (6)
 - 73 Attic room (6)
 - 77 Drive forward (5)
 - 78 Grinding machine (4)
 - 79 Air hole (4)
 - 80 Opinion (4)



Shannon Jury

M **027 823 1851**

E **shannon.jury@harcourts.co.nz**

P **06 349 0883**

W **www.whanganui.harcourts.co.nz**

For all
your
real estate
needs.

Harcourts Whanganui Licensed Agent REAA 2008

Harcourts

SIMON SHUKER'S CODE-CRACKER Extra 807

EACH number in our Code-Cracker grid represents a different letter of the alphabet. For example, today 22 represents B, so fill in B every time the figure 22 appears. You have one letter in the control grid to start you off. Enter it in the appropriate squares in the main grid and solve the starter word. Fill in other squares in the main and control grids with the found letters and look for the next word. Follow the word trail through the puzzle to its completion. www.codecracker.co.nz

1	2	3	3	4	5	6		1	7	2	8	9		14
2		7				10		11		12				15
7	4	13	14		15	14	5	1	16	14	17	13		16
4		18		6		4		7		6		12		17
1	19	4	20	12	8	5	21	13	13					18
														19
		22		2		16				8				20
23	8	7	13	16	6		13	7	13	1	16	6		21
13			13			1		4		1				22
5				20	2	5	2	7	2	24	14	13	6	23
4			12		4			22		5		6	2	24
6	25	8	7	7	2	25	6		6	16	14	5		25
2		7		13		13				2				26
5	8	20	13	26		22	13	1	2	20	13	6		26

© Simon Shuker www.codecracker.co.nz

Sudoku

				3	7	9	8	4
3		7	4					5
		4	6					7
	1	3						
			2		4			
						7	1	
2					5	4		
5					6	2		8
8	4	6	9	2				

HARD

Previous solution

2	3	6	8	4	1	7	5	9
9	1	4	5	2	7	3	8	6
5	8	7	3	9	6	1	2	4
8	7	9	4	1	2	6	3	5
1	5	3	7	6	8	9	4	2
4	6	2	9	5	3	8	7	1
6	4	8	2	3	9	5	1	7
7	2	1	6	8	5	4	9	3
3	9	5	1	7	4	2	6	8

Fill the grid so that every column, every row and every 3x3 box contains the digits 1 to 9.

Previous solution

1	E	X	A	M	I	N	D	J	R	T	V	O	Y
14	S	P	C	K	W	F	L	U	Q	G	H	Z	B

Previous crossword solution

ACROSS: 1 Guess, 4 Fly off the handle, 14 Plush, 15 Mural, 16 Mysterious, 17 Sever, 19 Dew, 20 Respond, 21 Polar bear, 22 Plunge, 25 Postmarks, 27 Shekel, 28 Censor, 33 Contraband, 35 Err, 36 Pelmet, 37 Less, 39 Use, 41 Prairie, 42 Afraid, 43 Dismantle, 44 Eerie, 45 Cemetery, 50 AI, 51 Backache, 55 Attic, 58 Try in vain, 59 Ransom, 60 Ammonia, 61 Duo, 63 Room, 64 Modify, 65 Nod, 66 Overlooked, 68 Poetry, 69 Museum, 71 Squeamish, 76 Midway, 77 Disappear, 79 Engorge, 81 Too, 84 Stile, 85 Initiation, 86 Alloy, 87 Smash, 88 Anonymous letter, 89 Adder.
DOWN: 2 Unused, 3 Swamp, 5 Lays, 6 Outlook, 7 Formal, 8 H-bomb, 9 Hostage, 10 Nash, 11 Lively, 12 Guide, 13 Chowder, 14 Printer, 18 Initiative, 23 Fatal, 24 Seclude, 26 Outlive, 27 Strudel, 29 Sceptic, 30 Hoarse, 31 Decay, 32 Geisha, 34 Deft, 36 Pearl, 38 Siege, 40 Hack, 45 Cater, 46 Maypole, 47 Tank, 48 Reason, 49 Study, 50 Acronym, 52 Compliment, 53 Amorous, 54 Heifer, 55 Anxious, 56 Snide, 57 Logo, 62 Beret, 67 Prudish, 68 Protest, 70 Elitism, 72 Quartet, 73 Malign, 74 Uphill, 75 Ignore, 76 Moral, 78 Adieu, 80 Ogled, 82 Keen, 83 Core.

5x5

G	A	E		
	O	E		
A		O	G	
	A	S		
E		D	D	

Insert the missing letters to complete ten words — five across the grid and five down. More than one solution may be possible.

A	T	L	A	S
B	R	A	C	E
L	I	T	H	E
E	T	H	E	R
R	E	E	D	S

Previous solution

All puzzles © The Puzzle Company
www.thepuzzlecompany.co.nz

WHAT'S ON

IN THE COMMUNITY

Alcoholics Anonymous

Phone 0800 229 6757. If you have a drinking problem maybe we can help. AA Wanganui area meeting list: Sunday, St Johns Lutheran Church Hall, 51 Liverpool Street, Wanganui, 9am; Monday, Friendship Hall, Morris Street, Marton, 7.30pm; Tuesday, St Johns Lutheran Church Hall, 51 Liverpool Street, Wanganui, 12.30pm; Wednesday, St Luke's Church Hall, 34 Manuka Street, Castlecliff, 7.30pm; Al-Anon (family support) Fridays, Gonville Library meeting room, 12.30pm. Ph 0508 425 266.

Alzheimers Whanganui Inc. Mother's Day High Tea

Sunday 12th May. Wanganui Golf Club, 14 Clarkson Road, Whanganui - Doors open 2:15pm, \$35.00 per ticket, bookings essential. Tickets purchased from office 4/236 Victoria Avenue, Whanganui 4500. Phone to book (06) 345-8833 or email admin@alzheimerswhanganui.org.nz

Change Your Mind, Change Your Life: Because You Matter!

Discover the transformative power of shifting your mindset and unlock your full potential! Join us for an inspiring talk where we explore the profound impact our thoughts, beliefs and habits have on our lives. Experience the incredible EFT (Emotional Freedom Techniques) Tapping demonstration and feel the difference yourself. It's never too late to rewrite your story. Join us on this journey and unlock the limitless potential within you. Sunday May 5, 4.40pm to 6pm. Dance Hall, 90 Peat Street, Whanganui. \$25 per person. Email lizziesinsights@gmail.com

Do You Have Questions About the Bible?

Come and join us at the Christadelphian Hall on Tuesday night at 7:30pm for Bible-based discussion and a cup of tea. All are most welcome. 138 Great North Road. Email: wanganui.ecclesia@outlook.co.nz / www.thisisyourbible.com

What's On Notices

What's On in the Community notices are \$10 for up to 50 words. Contact River City Press, 52 Ingestre St, by Tuesday 1pm to place your advertisement.

ESOL Home Tutors

Are you interested in other cultures and helping new migrants and are you keen to teach English as a volunteer tutor? English Language Partners Whanganui is running a free volunteer ESOL Home Tutor Training course on Monday and Wednesday afternoons, beginning on Wednesday 15th May from 1.00pm to 4.00pm and running until 12th June. Text Jane for details on 027-257-7776 or email whanganui@englishlanguage.org.nz

Free Computer Course at UCOL

Learn at your own pace. The course covers Microsoft Word, Excel, PowerPoint, Publisher and Access. Two days a week, Monday and Tuesday, 9.00am to 11.00am and 5.00pm to 7.00pm each day. Add computing skills to your CV. Telephone (06) 965-3800 or visit the campus.

Theosophy Whanganui

Usually held 2nd Sunday Monthly. Where: Community Arts Centre, back river entrance in the Awa Room. When: 2pm What: Presentation with respectful discussion and communication. Purpose: No dogma, 'Do no harm', explore ancient wisdom to develop self with the universe. Email: theosophywhanganui@gmail.com

Whanganui Film Society

Monday 6 May 7pm: Rain (Christine Jeffs | NZ | 2001 | M cert) Based on Kirty's Gunn's novel, this is an evocative mood peice about the disintegration of a marriage. As a mother seeks escape, her daughter grows up too fast. Davis Theatre, Watt St. Members only. Join at nzfilmsociety.org.nz/whanganui/html

Whanganui Music Society presents a Mothers' Day Concert

Jane Winstone Chapel 12th May, 2pm. Piano, flute and clarinet items. Bring your Mum along! All welcome, \$5 entry for non-residents of the Village. Parking and entry from Oakland Ave, please.

Wanganui Spiritual & Awareness Centre

Meetings 7pm Sundays, Quaker Meeting Rooms, 256 Wicksteed St. Local or visiting speakers or mediums sharing their spiritual gifts. Join our healing circle, take a raffle, stay for supper and chat. Everyone is welcome. Koha appreciated. See our Facebook page for details. Ph: 027-697-6308.

REVIEW: The International Grand Magic Show

Whanganui, 24 April, Review

By Doug Davidson

I confess I haven't been to a magic show for years, so didn't have too many expectations. Arriving early, we watched the enthusiasm of everyone - from young children through to older people. There was a good crowd. The spell of magic shows clearly continues.

There were the expected illusions, such as where the young lady in the box gets cut up in so many ways but comes out of it all without a scratch. I stared intently hoping to discover how it was done - but like so many, just shook my head in wonderment.

Andre Vegas, the Illusionist, did a number of similar tricks throughout the show, including the final one, when again the young lady had to undo locks and chains before the jagged wall of death came crashing down on her. Of course she escaped just in time. You could feel the tension in the audience, though.

There was plenty of variety and never-seen-before acts (at least to me). Jean Philippe Janin was perhaps the star, with everything from comedy to juggling. The audience loved him.

Mr How came on and asked us to use four cards we were given as we entered the show - tear them in half, throw away this one and so on - and at the end, with only two pieces left, look at them. They were the two halves of the

same card. (I confess I didn't follow the instructions properly and failed)

Felicity Rogers combined magic and theatre; a change of pace and beautifully done.

Members of the audience were invited on stage and there was no shortage of people, especially children, begging to be picked. However, if you or your children want to be picked - sit downstairs.

Reggie Gavel, Producer and Tour Manager, says they will be returning next year with a new, different programme. It will be well worth going to.

Recent Bereavements

Sadly passed away recently...

Pamela Jane (Pam) ANNABELL, on 23 April 2024, aged 87 years.

Nora Josephine BLAKEMORE, on 28 April 2024, aged 77 years.

Johnny Herbert EAD, on 23 April 2024, aged 65 years.

Uenuku Heremia EDWARDS, on 27 April 2024, aged 75 years.

Lois Cecelia (formerly Yorston) GRIGG, on 24 April 2024, aged 90 years.

Russell Peter JOHNS, on 26 April 2024, aged 60 years.

Hine Manakore KEREOPA, on 24 April 2024, aged 73 years.

Elizabeth Lynne (Beth) RUMNEY, on 21 April 2024.

Alister James SCOTT, on 23 April 2024, aged 88 years.

Marjorie WILD, on 24 April 2024, aged 87 years.

Doreen Ethel WINK, on 27 April 2024, aged 86 years.

Roy Roland VENTER, on 27 April 2024, aged 79 years.



DEMPSEY & FORREST
FUNERAL DIRECTORS

Arrange a visit today and meet our friendly team. We are here to help you in your time of need. 208 Guyton St Phone 06 349 0202 any time www.dempseyandforrest.co.nz



Anderson Memorials
Your loving memories set in stone **110 YEARS** 1914-2024

HEADSTONES
Family owned for since 1914

For all monumental work in all cemeteries
Check out our website below

462 Somme Parade, Whanganui - opposite the cemetery
Tel (06) 343 8708, Email: info@anderson-memorials.co.nz
Showrooms in Feilding & Palmerston North
www.anderson-memorials.co.nz



Cleveland Funeral Home — (06) 345 5522

Pre-Planning
Call or Visit
For Your Free
Pre-Planning
Pack

179 Ingestre Street | clevelandfunerals.co.nz

All Kiwis deserve a great meal.
But only Whanganui has Jamie's Angels.

Perfect, personalised meals on a plate.
Delivered daily throughout Whanganui.
Call today to find out more.
Freephone: 0800 526 435

JAMIE'S ANGELS
Freshly Cooked Meals
For The Elderly

Email: jamiesangelsnz@gmail.com W: jamiesangels.co.nz
-: ACC registered Vendor :-

Funky Duck cafe owner in battle with Council

By Mark Dawson
Rather than chose a new operator for the popular Funky Duck café at Rotokawau Virginia Lake, Whanganui District Council will consult with the community over how it would like the facilities there to shape up over the next decade.

The council says that before proceeding with proposals for the operation of the café (it reviewed four such proposals, including one from current owner Dave Hill, in December) it wants to have "input from the community on what they want to see happen in Rotokawau Virginia Lake over the next ten years".

A consultation process will be initiated this month.

But Mr Hill, who wishes to sell his business and retire, fears that will mean a diminishing facility and possibly no café at all next summer when demand is at its greatest.

The Funky Duck's ten-year lease runs out in March next year, and Mr Hill has repeatedly over the past five years asked the council to extend it to help him to sell his business.

"I have had four prospective buyers who

wanted to take over the café, but, of course, they wanted to secure their investment by having the lease extended," he said.

With a lengthy business career behind him, he says the council is the worst landlord he has dealt with and accuses it of delays and procrastination.

Keen to retire, Mr Hill says he is going to have to wind down the café, sell off the chattels and leave an "empty shell" – as well as eight staff looking for new jobs.

"I want someone running this place – I don't want Whanganui to lose it," he said.

He has launched a petition which, he says, has so far gathered more than 1000 signatures opposing the "forced closure" of the Funky Duck.

Council chief executive David Langford told the River City Press: "Mr Hill has made repeated requests to the council to extend the lease to put him into a better position to sell the business. These requests are outside of the terms of the lease and the council's normal process.

"They have been declined because there needs to be a fair and transparent process for deciding who gets the next lease for this prime

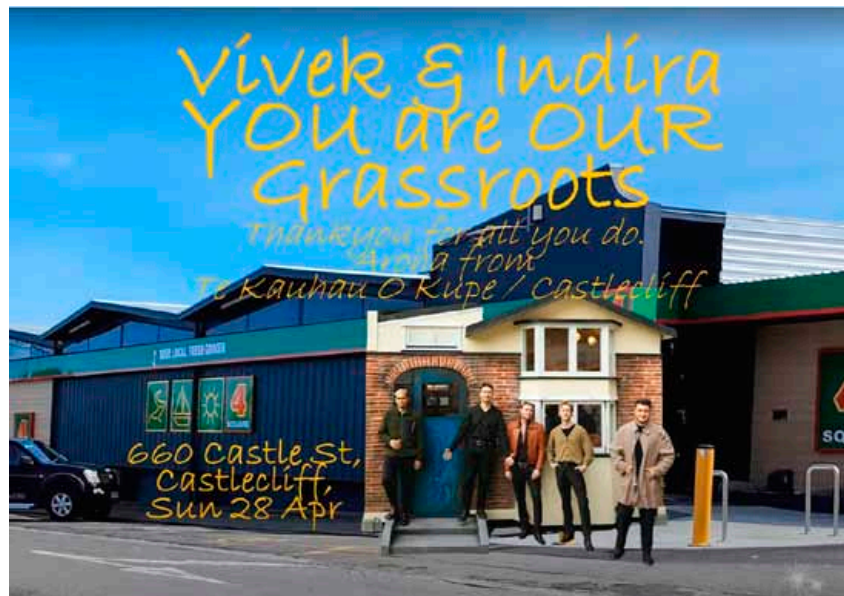
location in a busy premier park, which is funded by our community through rates.

"I can understand Mr Hill feeling frustrated



Funky Duck Cafe at Virginia Lake

Six60's visit to Castlecliff a huge success



Six60, "Aotearoa's biggest band (probably/almost certainly) appearing in Castlecliff is a pretty exceptional event," says James Barron, Chair of Progress Castlecliff. The public came in big numbers to meet them on Sunday, April 28, and at the same time enjoy a sausage sizzle as well as taking advantage of \$6.60 deals at Four Square Castlecliff.

It was all part of Six60's Grassroots Tour around NZ. As part of the tour, they brought a little piece of Dunedin with them – a

miniature replica of the flat where the band members once lived together in Dunedin (the iconic 660 Castle St). It was parked up at the local Four Square.

Four Square Castlecliff, had \$6.60 and 66 cents deals while blasting Six60's biggest hits through the loudspeakers.

After the karakia, it was sausage sizzle time with over 500 sausages going out (in addition to five catering trays of sandwiches and cakes).

James reports, "We had no crowd or traffic man-

agement issues with the people attending happy to wait and enjoy the sun.

"Six60 arrived on schedule, but I doubt they departed to schedule, instead staying for nearly 90 minutes to spend a generous and genuine amount of time with each and every person lined up to meet them and them joining us around the BBQ for a sausage or two. Their down-to-earth engagement with fans was remarkable – kaumatua there with mokopuna remarking that although they didn't listen to newer music, they were now huge fans of Six60!

"The "Grassroots" theme was so appropriate, with our community feeling the aroha and respect flowing both ways. In particular it was a privilege to offer the community the chance to say THANK YOU to Vivek and Indira for the mahi they do for Te Kauhau-o-Kupe (Castlecliff). While the signed thanks from community leaders was planned, the numbers that wrote a thanks note or replied "to support Vivek" when asked "Why are you here?" shows the people of Castlecliff really treasure the chance to acknowledge Castlecliff Four Square's place in our community.

"It was an amazing day for our seaside suburb and treasured by the many who attended."

because he has not got the outcome he wanted, but I disagree that this is due to poor communication. Mr Hill has had frequent interactions with the current mayor, a number of councillors, myself as chief executive, and current and past general managers.

"A call for expressions of

interest was put out last July and four proposals were received from local businesses, including a proposal from Mr Hill. These were presented to elected representatives in December.

"The whole community will have the opportunity to have their say when consultation starts in May."

FOR SALE

BLINDS - Roller & Venetians to order. Free measure and quote. Strath Davis Furniture & Flooring, Ph (06) 345-0883.

BOOKS: massage, aromatherapy, advanced cosmetics, herbal remedies \$30-\$90. Soap moulds \$5 each. Sodium Hydrochloride 1 bucket \$18. Contact Raewin 027-282-2825.

DOG run and kennel for large dog, \$150.00. Beads, glass mirrors, suitable craft, mosaics, \$20 the lot. Ph. (06) 348-9929. **JANOME** sewing machine \$375.00. Janome overlocker, new, \$350.00. Exercise trampoline (small) \$100.00. Filter coffee machine, new, \$50.00. Phone Raewin 027-282-2825.

NEW books available at River City Press, 52 Ingestre St. "From the Sea to the Mountain"; "Whimsical Tales of Old Wanganui"; "More Whimsical Tales of Old Wanganui"; "My Life - Annasophia".

TOP-VALUE great range of \$6.00 native plants and grasses including Black Mondo, looking superb for landscaping now. Two varieties of Nandina; Domestic and Gulf Stream, both low maintenance and colourful. Parnells Quality Tree and Shrub Nursery, 102 Fox Road, Springvale, Wanganui. Phone 344-6645, well worth an inspection, with competitive prices and sound advice. Est. 1895.

LAWNMOWING + GARDENING

LAWNMOWING, section tidy ups, pruning, WINZ quotes. Tel-Tx 06-344-2535/021-0899-2345.

LAWN-MOWING work wanted. Free quotes. Phone or text 022-540-3375.

FRUIT & PRODUCE

FRESH vegetables available, open Thursdays, Fridays. Laugeson's Gardens, Westmere Road.

PSYCHIC CONSULTANT

I am available to help with your past, present and future as well as important decisions. Yes! Of course I'm still working! Sandra Singleton. Numerologist Wanganui. 06-345-3803.

SITUATIONS VACANT

GET paid to exercise! Pamphlet Distribution require reliable runners to deliver RCP and brochures each week. Phone Bubs on 343-2010 or 027-218-2010.

FIREWOOD FOR SALE

AFFORDABLE firewood starting from \$50 a cubic metre for sale. Please phone us on (06) 343-8466.

HEALTH & BEAUTY

JADE Traditional Thai Massage. Excellent massage at reasonable prices. 64 Guyton Street. Phone 348-8466 for an appointment.

JAX ensomme Qualified stylists offering professional hairdressing and gold card services. Book online or call (06) 343-1225.

JAX & Menz cut and style. Appointments not always necessary but bookings are available with our qualified team Uriah, Loren and Justine. Gold Card welcome. 51a Ridgway Street. Open 6 days, late night Wednesday. (06) 4372-908008

WANTED TO BUY

GINZA. Always buying, always selling. Good used furniture, antiques, China and collectables. Call Ginza 345-3154 **RANGES** + dishwashers in reasonable condition etc. Can pick up. Please Ph: 344-7503 or 021-0823-6126.

WORK WANTED

HOME maintenance and shifting. House clean-up, gardening, water-blasting, spout cleaning, de-cluttering. Ph Ray 027-2807015.

MOBILITY scooters. Sales, service, repair, rental wheelchairs, walkers, ramps. Call Graeme 021-1195118 or (06) 347-6927.

PAINTER and Plasterer, professional, efficient and experienced. No job is too small. Reference available. Call or text 022-035-0175.

MOVING?

100% locally owned



Dave Hoskin
CARRIERS LTD

Furniture removals door to door
National and international

390 Heads Rd. P.O. Box 5042 Wanganui
Phone: 06 344 7002 Email: darrell@hoskincarriers.co.nz



OFFICE HOURS

Monday to Friday
9am - 5pm

345 3666

Corner
Wicksteed & Ingestre Sts
rivercitypress@xtra.co.nz
www.rivercitypress.co.nz



WANGANUI VETERINARY SERVICES

ARE CELEBRATING 30 YEARS

AT 35 SOMME PARADE

To celebrate... we will be giving a prize away...
every week day.... For the month of May



Customers of the day can go in the draw for a mystery prize which will be announced the following day. Like or Follow Wanganui Veterinary Services on Facebook to find out the lucky winner

NEED HELP?

Emergency.....111
 City Mission/Foodbank345 2139
 Women's Refuge Wanganui 344 2204



CLASSIFIEDS

52 Ingestre St Ph 345 3666
 Email: rivercitypress@xtra.co.nz

Nominate someone you think is deserving of our **Bouquet of the Week!**

Email or facebook message us with your nomination and reason why they deserve to win!

email: rivercitypress@xtra.co.nz
 facebook: River City Press Wanganui

LAWN MOWING

LAWNS NEED MOWING?
 Cutting Edge Lawns

Keeping Lawns & Costs Down!

- Locally owned & operated
- Pensioner discounts
- WINZ Quotes
- Ride on work

Wayne Bishop
 Phone 027 555 3074

AFFORDABLE LAWNMOWING

Great quality service, great price. Pensioner rates available. Call Paul on 021 245 4999

WEBSITE DESIGN

GET a stunning, contemporary website at minimum cost, or give your old one a strategic revamp. Phone Peter on 020-4161-3506 or email peter@toucan.media.

REAL ESTATE

Time to Sell?

- FREE market appraisal
- FREE marketing package
- No up front costs

Effective, Efficient Marketing of your property = SOLD

Call Marion Farr today to discuss your real estate needs.
 Email: marionfarr@xtra.co.nz

Please call Marion Farr on 021 572 033

THE WATSONS
 ROSS WATSON REAL ESTATE MREINZ
 Licenced under the Real Estate Act 2008

RELIGIOUS SERVICES

UNITED SOVEREIGNS CHURCH
 corner Puriri and Harper Streets
SUNDAYS, 5pm to 6pm

United Sovereigns preach end times Revelation.
We preach truth and our obligation to God in these end times.
 Everyone welcome.

FOR RENT

BACH - Kai Iwi Beach. Fully furnished. Short or longer term. \$280 per week. Phone 027-479-9007

PERSONAL

FREE confidential health checks, STI and HIV screening. Whanganui Hospital. Phone for consultation 348-1775/021-323-077.

PUBLIC NOTICES / ENTERTAINMENT

NZRDA
 New Zealand Riding for the Disabled
WHANGANUI GROUP INC.

AGM

15 MAY 2024 at 5.00pm
 at 78 Purnell Street, Whanganui
 NEW NOMINATIONS WELCOME



JUMPS RACEDAY
 Thursday 9 May
 Racing from 11.35am - 4.17pm
FREE entry & parking
 Bars and rooms open from 11.00am

Ph 345 3968 wjc.co.nz

HAWERA HORTICULTURAL SOCIETY

Chrysanthemum & Flower Show

Saturday 4 May 12pm - 4pm
 Sunday 5 May 10am - 3pm

Community Centre
 Albion Street, Hawera

Displays - with goods for sale
 Society Sales Table
 Admission \$3 - Children Free

Māori Women's Welfare League
 TATAU TATAU

ANNUAL GENERAL MEETING

Whakaaronui ki te Ora
 AGM is to be held on **MONDAY 13 MAY 2024**
 at Ngā Tangata Tiaki Office in Taurawhiri Room at 12.15pm

AGENDA

- Creed
- Whakamoemiti / Karakia
- Minutes of the last AGM
- Acceptance of last minutes
- Election of Executive Officers for 2024
 - President
 - Secretary
 - Assistant Secretary
 - Treasurer
 - Area Reps

Rangimarie Manuel Whakaaronui ki te Ora Secretary
 If you have any further inquiries, email nannamanal@gmail.com

TRADES AND SERVICES

ARC
APPLIANCE REPAIR CARE
 Domestic And Commercial Appliance Repairs & Servicing

Get your drier serviced before winter sets in.

24 Bell St, Whanganui. Ph 06 345 5433
 E: office@appliancecare.co.nz

KEENE BUILDS
 Reuben Keene Qualified Builder

fb @keenebuildswhanganui
 0204 190 4693 reuben.renouf@gmail.com

BUYING and SELLING USED FURNITURE

GINZA BARGAINS

Phone 345 3154
 54 Maria Place Extn
 Email: ginza2@xtra.co.nz

WORK WANTED

SPRINGVALE PROPERTY MAINTENANCE

NO JOB TOO SMALL
 Interior / Exterior

Call Darren on 028 468 9753

STORAGE

STORAGE SPACE AVAILABLE

We have 50-1000 square metres of lockable storage available in Whanganui.
 Please contact Bernard Reuters on 0274 495 125 or reuters@devonhomes.co.nz for further details.

vega
 Get Your Best Mortgage Here

Natalie Sara
 Residential & Commercial Mortgage Adviser

022 164 1566
 natalie@vegaland.co.nz
 www.vegaland.co.nz

MONKEY BUSINESS
 Tree Care

OUR SERVICES

- pruning
- tree removal
- hedge trimming
- reductions
- storm damage maintenance
- planting

Get in touch for a FREE quote!

Eddie White
 ARBORIST
 mbtreecarenz@gmail.com
 027 385 6597
 www.monkeybusinessnz.com

Elevate Tree Service

- Tree felling
- Tree removals
- Pruning
- Digger Services
- Log Slabbing
- Chipping

022 355 4894 david.beatson@hotmail.com

Family Fun ENTERTAINMENT

- Bouncy Castles
- Obstacle Courses
- Slides
- Sports Gear & Extras
- Rides & Foam Cannon
- Concession Gear

Phone Jason 021 174 5035
 www.family-fun.co.nz

CLUB metro RESTAURANT @Club metro

OPEN Mother's Day! from 11am - close, Mums get their meal 1/2 price and receive a complimentary glass of Bubbles, bookings advisable.

THRIFTY TUESDAY DEAL - buy one full price meal and get the 2nd meal 1/2 price from 12pm.
\$10 HEAT & EAT MEALS AVAILABLE
 Delivery by arrangement.

To order call 349 0149 or 027 588 6699 or visit our website: clubmetrofood.nz

Members, Guests & Affiliated members always welcome at Restaurant @Club Metro 13 Ridgway St

WANTED

ANY Cars Wanted Dead or Alive



We will beat any prices in the market by 10%



TOP CASH PAID

\$100 - \$1,000 for small car
\$100 - \$7,000 for 4x4 UTEs
Vans, 4WD, Trucks, Buses

Ph Today 021 032 3006
Text: 022 535 0807

Top Service



only a phone call away!



ALL YOUR INK AND PRINTER NEEDS

Find us at
143 Victoria Avenue
Whanganui Photo & Print
06 348 0449
cartridgeworld.co.nz



Trusted Printing Solutions



WANGANUI
CONCRETE
CONTRACTORS LTD.

For all your Concreting Needs.



Mobile: 0274 905 580



Providing quality care and education for 0-6 year olds in our friendly and welcoming centre.
Don't miss the boat!

20 HOURS
FREE
for 3 to 5
year olds

Opening hours are
6.30am-5.30pm
Monday - Friday

Call or visit us today
19 Tawa Street, Gonville. Ph 347 7941

DIY DEALS

Landscaping | Building | Fencing



See us for all your:

- Landscaping
- Building & Fencing Supplies
- Posts & Rails
- Custom Made Trellis & Gates
- Decking Timber
- Farm Fencing Products

eastown

TIMBER & FENCING

BuildLink

Buy Better Build Better

06 349 0040

4 HOLYOAKE STREET, WANGANUI EAST
WANGANUI 4500

www.eastownbuildlink.co.nz

The Canvas Man

W A N G A N U I

Summer is here!



- * PVC Drop Curtains
- * Caravan Awnings
- * Crate Covers
- * Trailer Covers
- * Truck Tarpaulins
- * Ute Covers
- * Stone Chip Guards
- * Motorbike Seat Recovering
- * Custom Car/Motorbike Covers
- * Boat Covers
- * Custom Boot Liners

14 Halswell St, Wanganui.
Phone 06 343 8286 Mobile: 021 022 38519
Email: kazcet@xtra.co.nz



Driving Miss Daisy Whanganui

Driving Miss Daisy is NZ's number 1 friendly and reliable companion driving service.

Driving Miss Daisy supports you with:

- Appointments, shopping and Social
- Caring extra support as needed
- Wheelchair accessibility
- Out of town trips

ACC registered vendor.

Total Mobility Cards accepted.

Bookings essential.

Ph: (06) 347 9100

Mob: 021 503 313

Email:

whanganui@drivingmissdaisy.co.nz



Driving Miss Daisy

Top Service



only a phone call away!



Home Maintenance & Glazing Services LTD

Locally Owned

Repairs to

- Broken Windows
- Steel Window Repairs
- Handles & Door Roller
- New Work
- Handyman Services
- No Jobs too Small

Ph: 06 342 4780

Mob: 027 237 0562

Email: HMGS@inspire.net.nz

ALL WINDOW AND DOOR MAINTENANCE

ARBORIST

A specialist who cares for, and maintains trees. If this is what you need, call the experts for "Quality Service at Affordable Prices!"



BAZ BROADHEAD

Qualified Arborist

Ph 021 287 3330, A/H 06 347 8221
for your FREE no obligation quote

DURIE HILL FISH SHOP



HOURS:

Tues - Sun
4.30pm - 7pm
Fri 4.30pm - 8pm

63 Portal Street Ph 345 0313



DENT MASTERS
PAINLESS DENT REMOVAL

- Painless dent removal
- Paint protection film
- Ceramic coatings
- Car valet / Grooming Service
- Bush Wraps
- Free Quotes
- Fully Mobile Service Available

M: 021 065 7421

E: dentmasterspdr@outlook.com
www.dentmasterspdr.co.nz

Dent Masters PDR
 @dent_masters_pdr



COLOURPRO
PAINTING

We paint so you don't have to

NO-OBLIGATION, FREE QUOTES INTERIOR & EXTERIOR PAINTING

Ph: 027 856 1779 | Email: colourpropainting21@gmail.com

Ash Regan - Qualified Painter



OUR REPUTATION IS BUILDING

Kitchen and Bathroom Renovation Specialists



- New homes
- Renovations
- Extensions
- Decks & Fences
- Repairs
- Maintenance
- Sheds & Kitsets

Mobile: 022 2047 627

Website: www.truebuild.co.nz



LICENSED BUILDING PRACTITIONERS
Building confidence



WHANGANUI
photo & print

Whanganui Photo & Print
143 Victoria Avenue, Whanganui
Phone 06 345 6144

> Capture > Print > Personalise

PASSPORT PHOTOS

NO APPOINTMENT NECESSARY

- NZ Passport
- Foreign Passport
- Baby Passport
- Visa / Immigration
- Firearms Licence
- Kiwi Access Photo
- ID Photo
- Profile Photo

SUPPLIED PRINTED OR DIGITALLY

NEW

Simplicity

A cost effective 40oz solution dyed Polypropylene

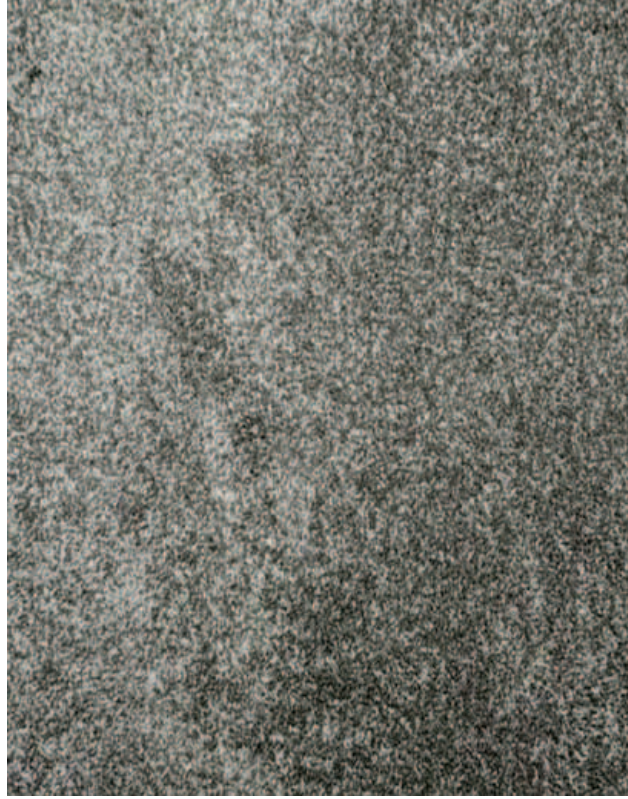
\$109.00
Per lineal metre



36 months interest free[^]

On in-store purchases \$1000 & over.

In-Store purchases \$1,000 & over. Ends 31 July 2024. Lending criteria, \$50 Annual Account Fee, fees, T&C's apply. Minimum payments of 3% of the monthly closing balance or \$10 (whichever is greater) are required throughout the interest free period. Paying the minimum monthly payments will not fully repay the loan before the end of the interest free period. Standard Interest Rate of 28.50% p.a. applies after interest free period. \$55 Establishment Fee or \$35 Advance Fee applies to Long Term Finance Purchases. Full T&C's see www.flooringxtra.co.nz



GREAT RANGE OF STOCK VINYL



2m Wide - \$68 lineal mtr 3m Wide - \$102 lineal mtr



FLOORING XTRA

Hobday & Lorentzen Flooring Xtra
31 Wilson Street, WANGANUI. PH 06 345 5405