

52 Ingestre Street, Whanganui. Phone 345 3666 or 345 3655, email rivercitypress@xtra.co.nz

Waimarie is innovating to expand customer satisfaction

BY DOUG DAVIDSON

The restored PS Waimarie turns 25 next year, and Manager Jen Britton is planning celebrations for the whole of January. But in the meantime, Jen, who has been in the role for just a year, has already introduced some innovations and has many more planned.

If you have been to the Market in the past two weeks, you might have noticed the new café in town – at the river side of the Whanganui Riverboat Centre. During the winter it will be open from 8am to 1pm every Saturday with the intention of making it five to six days a week by the end of the year.

The aim, apart from providing another opportunity for people to enjoy coffee, is to attract them into the Centre, check out the museum and possibly book tickets to go on a cruise. It is also part of Jen's desire to turn the operations more towards the river rather than the Taupō Quay entrance. As was the case last Sat-

urday, it is a lovely spot to sit back, admire the view, watch people walk by and drink coffee.

It was made possible by Jen approaching Paul Harris of the Village Snob coffee cart close by. She admits, "I wore him down." Paul has also developed his own coffee brand – 'Derelict.' Jen says, "The name was inspired by Ohura, once a thriving settlement on the Forgotten World Highway." But the full name is 'Ngaporo Derelict – Unforgettable Coffee' and Paul included Ngaporo in remembrance of the crew on the M.V. Ohura, who lost their lives when the vessel capsized while navigating the Ngaporo rapids.

As Jen said to Paul, "You couldn't marry two better things – Derelict Coffee with its connection to the river and the Waimarie, once a derelict vessel." Over the winter Paul

will be making and serving Derelict Coffee at the Riverboat Centre and later the Centre will have its own barista.

A later development will be to lower the M. V. Ongarue, currently on train track rollers at the river end of the centre, to the ground and set it up as an inside café.

Jen is very much in favour of a new hotel being built in Whanganui. "Tour groups are important to us, but we can book a maximum of only 12 at one time if they need accommodation in one hotel in Whanganui. Tour groups are normally up to 30."

But she doesn't plan to sit and wait for the hotel to come. Instead, she is exploring the opportunities for an overnight marae-based experience connected to a river cruise. If it was at Te Ao Hou in Aramoho, the Waimarie could come alongside to pick up and



Derelict Coffee available at the Riverboat Centre

drop off, depending on making sure the procedure was made secure.

Jen says, "The demand right now is for destination trips, and we will be having regular Sunday stopovers in Upokongaro allowing passengers time

to explore the village and get refreshments. We will also be offering one-way fares. Cyclists can also benefit whether you are riding from Whanganui or coming down the River Road. You will be able to carry your bike on board."

Another innovation Jen plans is offering bikes (not e-bikes) for hire. "They would be vintage cruiser bikes, some new, some repurposed and will include tandems. Visitors want the opportunity to cycle around town."

WANGANUI BEDROOM Specialists
OPEN 7 DAYS
 Locally owned & operated
151 St Hill Street, Wanganui
Phone 06 345 6084

Deb Hipango
 Licensed Salesperson REAA 2008

 022 3400 877
 deb.hipango@pb.co.nz
 Buying or selling?
 There's only one agent to call, it's Deborah Hipango.
 Experienced and Trusted
Property Brokers

WHANGANUI COMEDY GALA

WHANGANUI KIDS COMEDY SHOW
 JUNE 8 / ROYAL WHANGANUI OPERA HOUSE
 Whanganui District creative COMMUNITIES, DA DISPLAY, Liquid Edge

WINTER CHILLS?
SEE US FOR A RED HOT HEATPUMP DEAL
100% HOME DIMOCKS
 190 VICTORIA AVE, WHANGANUI. PH 06 348 4877
 www.100percent.co.nz **OPEN 7 DAYS**

ENROL NOW

- We have courses in:
- Animal Care
 - Rural Animal Technician
 - Carpentry Level 3
 - Agriculture Level 3 - Dairy

AGC TRAINING FOR INDUSTRY
 CHALLENGE YOUR FUTURE | WHAKAAEHA TO WERO

 Call 0800-348 8215 www.agctraining.co.nz

Check out what's in this week's RCP

The paddle steamer Waimarie has become a Whanganui icon, but it needs to continue to attract customers as it can't rely on its small Whanganui District Council subsidy. Jen Britton, the manager, is coming up with a range of innovations that will appeal to a wide customer base, including starting up a café at the riverside end of the Riverboat Centre (See our front page story).



Doug Davidson
journalist@
rivercitypress.co.nz

There are a range of tech activities for Techweek, including a couple of digital panel discussions (page 21), a Gonville Library tech day (page 21), and something for the youngster – a Game Jam (page 11).

We have an article about Wanganui Vet Services being in their premises 30 years. Their cleaner has been there all that time, and a number of years previously, when it was Riverside Tavern. Her role is more than cleaning – read what else she does (page 9).

There are two stories about auctions. One has already happened at an

RDA celebratory auction where their horses were 'auctioned' off for sponsorship (page 15). The other is for a 1967 Wolseley car to help Whanganui Rotary Club cover the costs of their 'Monster Book Fair' coming up (page 12). Something else to celebrate is the confirmed plans to build a walk bridge over the Whangaehu Bridge for Te Araroa Trail walkers (page 3).

Best wishes to the volunteer firefighters who are climbing the Sky Tower this weekend (page 19).

Heritage Festival planned to celebrate city centenary

Whanganui District Council, in conjunction with the Whanganui Regional Heritage Trust, is gearing up to commemorate a significant milestone in Whanganui's history – 100 years since Whanganui was declared a city.

Whanganui was granted city status in 1924, making it the first new city in New Zealand in fifty years. Mayor Andrew Tripe says this paved the way for other regional centres to follow.

"While these days our population is a few thousand people away from the 2024 benchmark to be designated a city, Whanganui still retains many of the characteristics of small city with its extraordinary architecture, rich arts scene and strong sporting and natural heritage," he says.

"To celebrate this, we are excited to announce a Whanganui Heritage Festival for 2024 to celebrate our history, our place and our community connecting to our wider place in the world as a UNESCO City of Design."

Running from Saturday 19 October to Monday 28 October, the 10-day festival will offer an array of community-led events in conjunction with the Whanganui Regional Heritage Trust.

Deputy Mayor Helen Craig says, "Our Stories' exhibition is not to

be missed. "Held at the Whanganui War Memorial Centre, this will be a collection of stories from Whanganui's past and present, from the triumphs of sports stars and the melodies of musicians to the impactful endeavours of community organisations and the captivating narratives of individuals."

She says, "Marking this milestone is a perfect time to celebrate and come together as a community with a variety of fun events.

"I'm particularly looking forward to gathering the histories from our community groups and individuals that showcase our talented people and differing cultures. Whanganui is a very special place, with a high number of special people both past and present who can be recognised in a very positive way."

Mayor Andrew says, "For those living in Whanganui and for visitors, our uniqueness and identity is reflected in the Awa, our arts and creativity, and our heritage buildings.

"Our War Memorial Centre, for example, where the 'Our Stories' exhibition will be held, is listed in the top 1000 modernist buildings in the world. Looking up and around when strolling down the Avenue, we are surrounded by beautiful heritage buildings."

He says, "Mark your calendars for a spectacu-



Victoria Avenue, 1925. Photo courtesy of the Whanganui Regional Museum.

lar street parade that will weave its way through the heart of Whanganui, showcasing the diversity and creativity of our community and shared histories. "And stay tuned for more exciting updates and announcements as we reveal the full line up of events and activities, allowing for reflection and celebration of the people and place of Whanganui."

Chinese Costume Day winner



Leita Hurtado-Saunders, the Hanfu 'Most Liked on Facebook' photo contest winner from the Chinese Costume Day, organised by Whanganui Chinese Association, collected her prize from Eileen Ng at River

City Press. Thanks to the generous sponsorship of the prizes by The Warehouse Whanganui, Whanganui Pak n Save and Victoria Avenue Countdown who contributed to the hamper prize.



- ❖ Supply, installation, servicing & repairs of all types and brands of heat pumps.
- ❖ All commercial and residential electrical work: Board rewires, lighting, repair and installation of any of your electrical needs.
- ❖ Vehicle air conditioning re-gas available
- ❖ Registered Electrician

Phone 027 565 6734 ❖ email: rtheatpumps@gmail.com



Carl's Community Connect

Come and meet with Whanganui MP Carl Bates. Hear what's going on in the electorate, and share your views with Carl.

Friday 24 May, 10am to 11am
Parnell's Café, 349 Victoria Avenue, Whanganui

Monday 27 May, 10am to 11am
Hakeke Street Community Centre, 65 Hakeke Street, Whanganui

carl.batesmp@parliament.govt.nz

Funded by the Parliamentary Service. Authorised by Carl Bates, Parliament Buildings, Wellington.

Were you asked to give Anita Silvero a big surprise for her 50th?

Whangaehu River Bridge planned for Te Araroa Trail

Back in 2014, we had Victor Silvero on our front page. He had asked the RCP to present his wife, Anita, the bouquet of the week for all the support and care she gave him in his paralysed and bed-ridden state. He was suffering from cancer.

The flowers were part of his appreciation for the "love of his life." And he was not one to stint. We quoted Victor as saying, "Anita has long wanted to go to Disneyland, and as this was impossible, I wanted Disneyland to come to her on her 40th birthday."

From his bed, he got permission from Disney to have Mickey and Minnie Mouse come to their house and arranged actors to play the roles of Mickey, Minnie and Alice in Wonderland, to Anita's total surprise and enjoyment.

He also arranged for the three Disney characters to go to the Children's Ward of the hospital so that the children could also meet the famous characters.



Victor with his wife Anita and a few of their favourite Disney characters in 2014, celebrating her 40th birthday.

Victor died in 2019 but he told Anita that through a friend he had organised a 50th birthday event, even bigger than for her 40th. It was her 50th on Monday, May 13, but nothing happened.

Understandably, Anita was disappointed. She does not know who the

friend was, who was going to organise the event and would love to hear from them, to help her celebrate her birthday but

also to thank her late husband for his love.

If you are able to help, either contact Anita directly or contact the RCP.

Over 120 people to speak at Long-Term Plan meetings

More than 120 people will be meeting with Whanganui District Council this week to share their thoughts on the proposed 2024 - 2034 Long-Term Plan and associated consultations such as the proposed changes to the Parking Bylaw – and Fees and Charges.

The public hearings, which will be held on 14, 15, 16 and 22 May, give community members the opportunity to speak with elected members directly.

"Hearing our community's feedback first-hand is a really important part of the Long-Term Plan process," says Whanganui District Council Mayor Andrew Tripe. "To be able to have real conversations about what matters most in our district, and to hear a wide range of views, will help ensure we make the right call."

"Elected members and council staff have engaged with people to discuss the issues at

numerous events and it's great to see we've had a truly excellent level of feedback so far, more than ever before. I'm really pleased the community is so engaged and thankful to everyone who will be taking time out of their day to speak with us about their formal submissions."

Within the Long-Term Plan, there are two key areas the council is aiming to balance – what significant cuts should be made to keep rates affordable, and what long-term investments are needed for the future of the district.

This process is about discussing all the options," explains Mayor Andrew. "Deliberations - where we will make our decisions – are set for early June, and between now and then we will be using this time to review and understand the community's extensive feedback."

Public hearings will be held in the Council



The start of South Beach by the South Mole.

The Te Araroa Whanganui Trust has been fighting for a bridge to go over the Whangaehu River, close to the river mouth, for about eight to nine years.

The trail is a 3000 kilo-

metre walking/canoe trail from Cape Reinga to Bluff. Coming to or leaving Whanganui, walkers take the No 2 Line (if going south) towards Fordell, along the Warrigate Road and then two kilometres of SH3 to the start of the Whangaehu Beach Rd.

Unfortunately, the Whangaehu River at the mouth is "too wide, unpredictable and too dangerous to cross," says Brian Doughty, Trust Chairman. A bridge will enable walkers to go past Whanganui Airport to South Beach and walk along the beach to Whangaehu and along to Koitiata (Turakina Beach) This will eliminate 32 kilometres of road walking.

Brian says, "You can cross the Turakina River

at low tide or even within two hours of each tide. There is also a campground which could be a good spot for the walkers to stay overnight."

From there, walkers can go past Santoff Forest area and come inland to Bulls. Again, at nearby Scotts Ferry there is a little village and campground."

Brian comments, "There is only one other beach walk on the Trail. That is 90 Mile Beach, and it is comparatively boring. This is also much shorter."

The Trust has received funding for the Geotec work and to draw up plans. The Te Araroa Trail is applying for funds to build and own. Brian hopes that the bridge will be completed in 2025.

River City Press
- the good news paper
Positive news stories and advertising welcomed.
Email: rivercitypress@xtra.co.nz
phone (06) 345 3666

COLOURPRO PAINTING
We paint so you don't have to
NO-OBLIGATION, FREE QUOTES INTERIOR & EXTERIOR PAINTING
Ph: 027 856 1779 | Email: colourpropainting21@gmail.com
Ash Regan - Qualified Painter

SUMMIT Electrical
Top Service • Top Workmanship • Top Electricians
• 24/7 Service
• FREE Quotes
• Member of HAZARDCO
• For all your electrical requirements
Summit Electrical Services Ltd
0800 2 SUMMIT
0800 2 786 648
Todd Cowan - 022 325 0056
Member MASTER ELECTRICIANS
Electrical Contractors Association of NZ

THOMPSON PLUMBING & GAS LTD
Master Plumbers
• General Maintenance Plumbing
• New Builds and Renovations
• Programmed Maintenance
• Drainage and Unblocking
• Gasfitting Service
• Hot Water Systems
• Heating
• Septic Tanks and Wastewater Systems
• Rain Water Tank Installation
06 345 0924
office@thompsonplumbing.co.nz
thompsonplumbing.co.nz

Find us on Facebook
Gonville superValue
just what you need

THIS WEEK'S SPECIALS

Super Lean Premium Mince
only \$11.99/kg
1/2 Price only \$10.00 each
\$20 Trays Crumbed Lamb Cutlets

WILD WEEKEND SPECIAL

only \$7.99 each
Frozen Mutton Roasts

Soup Bones only \$2.99kg
\$10 Boil Up Pack - 1kg Pork Bones, 1kg Bacon Bones

PRODUCE

3kg Bag White Washed Potatoes
only \$7.99 each
Mandarins
only \$4.50/kg

NEXT WEEK'S SPECIALS - STARTING 20.5.24

Frozen Mutton Loin Chops
only \$7.99/kg
\$15 Trays Pork Chops, Steaks or Slices
only \$10.00 each

All items while stocks last (no rainchecks). Get in early.
47 Abbot St, Gonville • Ph 06 344 3002 • 7am-8pm, 7 days
www.wanganui.store.supervalue.co.nz

Horizons Regional Council granted approval to release four imported insects to stop wetland invader

Horizons Regional Council has been granted consent to release four biological control agents to control the spread of purple loosestrife, an invasive weed of wetlands, lakes and streams.

The Environmental Protection Authority (EPA) has approved the import and release of four insects to target different parts of the purple loosestrife plant, *Lythrum*

salicaria. The insects are two beetles which eat the leaves of the plant, and two types of weevil which will eat either the roots or the flowers.

Horizons biodiversity and biosecurity manager Craig Davey says he is pleased approval has been granted, as using chemicals or manual removal is not an option in our lakes and wetlands.

"These insects are an

environmentally friendlier method of controlling these plants, rather than using herbicides over water and native vegetation".

"The introduction of these insects will stop the negative transformation of our precious wetland ecosystems. We have to do all we can to protect the tiny amount of these unique habitats which are home to many amazing native plant and animal species".

"Before the release of the insects, the next step is to continue our conversations with mana whenua and the wider community about this approach to habitat protection."

"These insects have been successfully used for more than 30 years in the USA and Canada, where they reduced purple loosestrife infestations by up to 90 per cent. This 30 year trial showed these insects are highly unlikely to harm native or any other plants except purple loosestrife or any other animals. There is also no risk to people."

"Independent experts approved these insects for import and release following a rigorous, evidenced-based investigative process which included the consideration of public submissions and international best practice and engagement with mana whenua." says Mr Davey. "Purple loosestrife is well established in some regions, such as Canterbury, the West Coast, Wellington, and Manawātū-Whanganui, with the largest populations at Lake Horowhenua. However, it has yet to spread more widely throughout the country and the release of these insects will help to stop, or dramatically

slow, expansion."

Mr Davey says purple loosestrife was intro-

duced to New Zealand as an ornamental herb before naturalising in the wild in

the 1950s. An established plant can create over 2.5 million seeds.



Purple loosestrife



Leaf beetle *Galerucella Pusilla*



Flower Weevil *Nanophyes Marmoratus*



Root Weevil *Hylobius transversovittatus*



Leaf beetle *Galerucella Calomariensis*

Secondary School students to attend Whanganui Career Expo



Whanganui is a great place to live, work and play. Understanding rites of passage when leaving school and developing meaningful relationships are the keys to the Whanganui Career Expo organised by our secondary school careers teachers. The Career Expo is at the War Memorial Centre on Thursday, 23rd May, from 9am to 3pm. 1,400 senior secondary school students from all Whanganui and Rangitikei schools are attending with their school. The Expo is

open to the public. We will be closed between 12.30pm-1.00pm for lunch. Every half hour, there will be an 'Intro to the Expo' session followed by chatting with post-secondary school career specialists at the stalls.

We have 45 exhibitors coming from around New Zealand. These include universities, private training organisations, hospitality institutes, Study Link, flight schools, and businesses looking to employ.

- Pigeon racing results -

The St Johns Club Wanganui Pigeon Racing Adjunct held its sixth race of the 2024 Young bird season with a race from Waitara. The race attracted 108 pigeons from six flyers. The winning pigeon from the loft of Shane Gudopp, of Marton, covered the 152km in 2hr 34min 34sec to record an average speed of 985.54 meters per minute (mpm) or 59.13kph. The pigeons experienced fine weather conditions, but head winds on their flights

to Whanganui (125km) and Waverley (96km).

Results were: Shane Gudopp (Marton) 985.54mpm or 59.13kph; Brent Miller (Waverley) 979.31mpm or 58.76kph; Alois Verstraeten of Tongariro Loft (Whanganui) 973.85mpm or 58.43kph; Jim Pullins (Whanganui) 972.58mpm or 58.35kph; B and A Fairweather (Whanganui) 967.78mpm or 58.06kph; Benedict Galandi (Whanganui) 945.49mpm or 56.73kph; Heather Verstraeten of

Tongariro Loft (Whanganui) 933.72mpm or 56.02kph.

Winner, Sprint Championship: Heather Verstraeten.

Whanganui ONE DAY ONLY

Thursday 23 May 9am to 3pm Career Exhibition

Location

War Memorial Centre

Career Advisors Network WHANGANUI

Of course we can!

55 Exhibitors

1,400 Senior Students

Employers Tertiary Community

Contact Coordinator: **AMELIA**
021 189 6683

EMAIL: **ameliaaroha@gmail.com**

eBikes
WANGANUI

New eBikes in stock and also eBikes available to hire!

Stockists of:

POWER TO THE PEOPLE

73 Putiki Drive, Wanganui | 06 348 8008
www.ebikeswanganui.co.nz
info@ebikeswanganui.co.nz

Want straight teeth?

VICTORIA DENTAL

Make an appointment today

06 345 3222

Victoria House
1a Rutland Street, Wanganui

ASK A PROFESSIONAL

Homemade & Raw Diets

As lifestyles, information and product options become more diverse, many pet owners are shunning commercial pet foods in favour of home-made and raw diets for their pets. While this can be done well, the main concerns with homemade diets are ensuring that the pet receives a complete and balanced diet appropriate for its size and age as well minimising the food hygiene and safety risks to both the pet and the humans they come into contact with (especially children, the elderly and anyone with a compromised immune system.) If you are thinking about feeding your pet(s) a home-made diet, it is important to be aware of the amount of work and planning required to do it well; a visit to your vet to discuss the resources available to help you do it safely and appropriately is a fantastic place to start.

WANGANUI VETERINARY SERVICES

35 Somme Pde, Wanganui, Ph. 349 0155

Review to look at sustainable future for Whanganui Regional Museum

Whanganui District Council has agreed to provide a one-off grant of up to \$250K to the Whanganui Regional Museum to address its current financial situation – but says it wants to review the museum’s governance, funding and service delivery model to ensure the future of the museum is financially sustainable.

Chair of the Whanganui Regional Museum Trust, Marshall Tangaroa says, “Unfortunately there are a number of issues that have contributed to the museum’s current financial situation.

“As we all know the cost of all consumables has risen considerably and general inflation has put severe pressure on the museum’s finances. Also in the current economic climate, fund raising is much more difficult, leaving the museum with an income shortfall.”

Whanganui District Council is the primary funder of the museum, which operates as an independent trust. The council currently provides the museum with an operating grant of \$1.125M per annum.

Mayor Andrew Tripe says this is proposed to increase to \$1.3M in the council’s draft Long-Term Plan 2024-2034. “This funding, should it be approved, won’t start

until 1 July 2024,” he says, “which isn’t soon enough to address the museum’s short term cashflow needs.

“In the meantime, we have agreed to respond to the museum’s request by granting the one-off emergency payment, but this is on the condition that the council undertake a review of the Whanganui Regional Museum to ensure its sustainability in the years to come.”

He says the museum holds an important place in Whanganui’s community and the wider region. “The Whanganui Regional Museum is strongly linked to our identity and understanding of our past, present and future. It has been visited and appreciated by generations and plays a key role in preserving our natural and cultural heritage. We want this review and its outcomes to ensure the museum’s viability for many more generations to come.”

The council’s chief executive, David Langford says under section 17A of the Local Government Act, councils are required to periodically review each of their activities to ensure the governance arrangements, funding and financing, and delivery model are fit for purpose and cost effective.

“While the trust owns the museum collection and governs the develop-

ment and operation of the museum on behalf of the community, the council owns the building that houses the museum, holds a service level agreement with it, and is its primary funder.”

He says, “As the museum operates under bicultural governance, is bicultural in its operations, and holds many taonga on behalf of iwi and hapū, there will need to be appropriate consultation for the review.

“By mutual agreement, an independent consultant that specialises in this type of work has been selected

to undertake the review, which is estimated to cost \$36,000. The review is expected to be completed before the end of the financial year.”

Museum Chair Marshall Tongarewa says he is most grateful that the review will focus on the museum’s viability and sustainability. “The museum is so important and holds priceless taonga that connect deeply into the community. There are many stakeholders and supporters who will be pleased that the council is supporting our irreplaceable cultural heritage in this way.”



Whanganui Regional Museum



A large geomagnetic storm happened in space last weekend, causing Aurora lights to be seen all over the world. This photo was taken by Mitchell Jarrett, with an iPhone, at Kai Iwi beach, Whanganui last Saturday - just a faint glow could be seen with the naked eye, however, phone cameras really showed up the lights.

ADDING JOY TO YOUR JOURNEY

RESIDENTIAL & LIFESTYLE SALES
 ☎ 021 930 472 ✉ balwinder.kaur@bayleys.co.nz
BARTLEY REAL ESTATE LTD, BAYLEYS, LICENSED UNDER THE REA ACT 2008

BAYLEYS | Balwinder Kaur

River City Press
 - the good news paper
 phone 345 3666 - email: rivercitypress@xtra.co.nz

Release the inner Chef with Samsung Cookware

Samsung Ceramic Cooktop



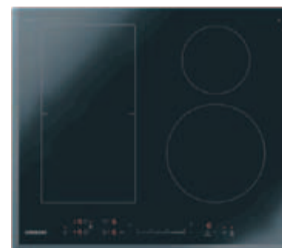
CTR164NC01

\$849

READY IN NO TIME

With Quick Start, Samsung induction hobs have high heat instantly so you can start cooking in a flash.

Samsung 60cm Induction Cooktop



NZ64T5747EK

\$1449

Samsung 80cm Induction Cooktop



NZ84J9770EK

\$2149

Samsung Built In Oven



NV7B412OIASSA

\$1199

Samsung Built In Pyrolytic Wall Oven



NV7B4430ZABSA

\$1799

COOK MORE WITH DUAL COOK

Choose how you cook different meals to optimise results. Dual Cook’s upper and lower zones work independently or together. Use the upper zone for smaller dishes, both together to prepare a variety of dishes with different settings and achieve tasty results, or the whole oven for large dishes.

Samsung Series 6 Oven with Dual Cook Steam & Air Fry



NV7B6675CAK

\$2299

100% HOME DIMOCKS

190 VICTORIA AVE
 WHANGANUI
 PH 06 348 4877
www.100percent.co.nz

OPEN 7 DAYS

2019 SUZUKI SWIFT RS

1.0L turbo, auto, NZ new, only 81,000 kms, 17" alloys, GPS, bluetooth, reverse camera, adaptive cruise, keyless.



NOW \$15,995

2010 NISSAN MARCH

1.2L, auto, only 83,000kms, high seater, CD, air conditioning, economical, immaculate condition!



NOW \$7,995

2022 SUZUKI SWIFT SPORT

1.4L manual, only 2244kms, GPS, bluetooth, reverse camera, adaptive cruise, keyless start, weathershields.



NOW \$24,995

2015 NISSAN PULSAR ST

1.8L, auto, NZ new, only 103,000kms, chain driven, alloys, cruise control, reverse camera, bluetooth, great buy.



NOW \$9,995

2011 MAZDA DEMIO

1.3L, auto, only 113,000kms, chain driven, alloys, tints, weather shields, trendy and reliable!



NOW \$8,995

2015 BMW 118i

1.6L turbo, petrol, only 57,000kms, reverse camera, bluetooth, cruise control, auto lights, great buy!



NOW \$13,995

2021 SUZUKI BALENO RS

1.0L, auto, NZ new, 1 owner, only 41,000kms, GPS, bluetooth, reverse camera, weather shields, stone protector.



NOW \$19,995

2015 JAGUAR XE R-SPORT

2.0L, turbo petrol, auto, NZ new, only 76,000kms, leather, GPS, reverse camera, bluetooth, parking sensors.



Just Arrived NOW \$24,995

2012 MITSUBISHI LANCER SEI

2.0L, auto, NZ New, leather, keyless start, cruise control, bluetooth, auto lights / wipers, alloys, towbar.



NOW \$13,995

2010 MAZDA PREMACY

2.0L, auto, 7 seats, body kit, fog lights, tints, weather shields, alloys, sporty people mover for the family!



NOW \$6,995

2021 SSANGYONG TIVOLI LTD

1.5L turbo, top model, NZ new, 1 owner, only 15,000kms, Apple CarPlay, reverse camera, bluetooth, plus more.



NOW \$25,995

2012 NISSAN ELGRAND

2.5L, auto, Highway Star model, partial leather, 7 seats, electric sliding doors, tints, towbar, great buy!



NOW \$14,995

2016 SUBARU OUTBACK LTD

2.5L auto, AWD, only 67,000kms, leather heated seats, dual climate control, safety package.



NOW \$23,995

2017 HOLDEN CAPTIVA LTZ

3.0L, V6 petrol, NZ new, 1 owner, 7 seater, running boards, leather, reverse camera, bluetooth, top spec.



NOW \$17,995

2023 KIA NIRO GT-LINE

1.6L, HYBRID, auto, 1 owner, sunroof, only 19,000kms, reverse camera, dual A/C, electric tailgate, heated & cooling seats.



NOW \$49,995

2017 TOYOTA HILUX SR

2.8L, auto, 2WD, only 104,000kms, 20" alloys, nudge bar, towbar, flares, tonneau cover, reverse camera, bluetooth, be quick!



NOW \$29,995

2018 SSANGYONG ACTYON SPORTS

2.2L, turbo diesel, auto, NZ new, 4WD, canopy, roof rack, towbar, leather heated seats, black on black, won't last long!



NOW \$26,995

2012 MITSUBISHI TRITON GLS

2.5L, auto, 4WD, canopy, towbar, running boards, cruise control, reverse camera, bluetooth, great buy!



NOW \$17,995

2014 SSANGYONG ACTYON SPORT

2.0L turbo diesel, auto, 2WD, 20" alloys, hard lid, towbar, tubliner, stone protector, bluetooth, tints.



NOW \$16,995

2022 NISSAN VANETTE NV200

1.6L, auto, only 59,000kms, dual slide doors, tints, weather shields, ply floor, cargo curtain, great tradies van.



NOW \$28,995

The Suzuki
REALLY REALLY RIDICULOUSLY MASSIVE MEGA SALE



SUZUKI

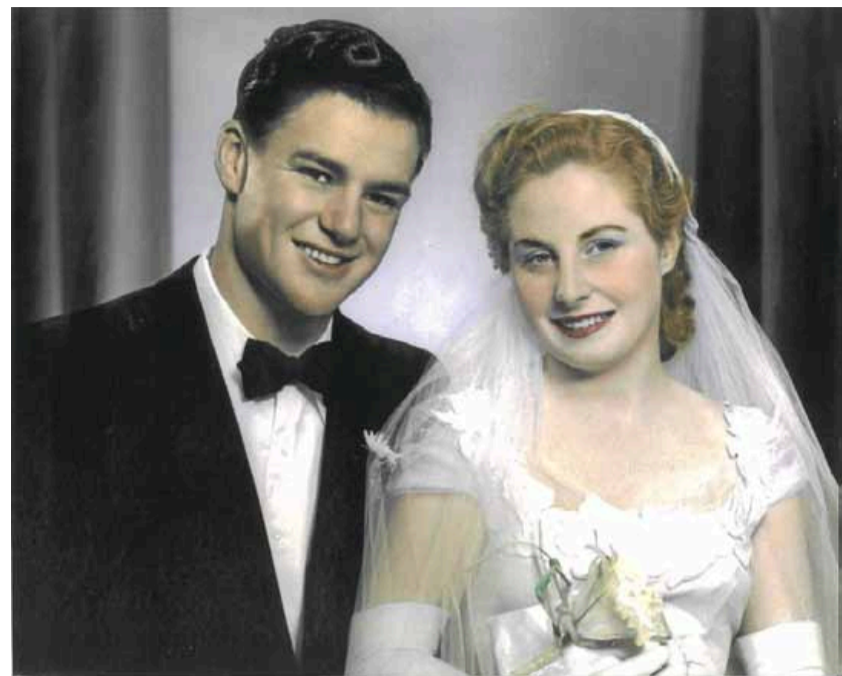
276 & 330 Victoria Avenue, Wanganui. Phone 06 345 5115



David Jones Motors



Bud and Mollie Bloor celebrating 70 years of marriage on May 22



Bud and Mollie on their wedding day.

Bud and Mollie Bloor will have been married 70 years on 22 May having been married in the Holy Trinity Church in Tauranga on the 22nd of May 1954. The family moved to Whanganui in 1963 and have resided here since then. Both Bud and Mollie worked for NZ Railways and the NZ Post Office in Whanganui. Earlier, Bud had represented New Zealand as a light heavy weight boxer at the 1950 Empire Games in Auckland. In 1953 he won the New Zealand light heavy weight boxing champion title at the NZ National Boxing finals held in the Whanganui Opera House. He also

won the George Bush Memorial Belt (most technical boxer) that year. Bud also played rugby for Taranaki and Thames Valley. Simon Bloor, Archivist at the Whanganui District Council is their son. He says, "My parents are both long time stalwarts of Wanganui Am dram and Repertory theatres. "Family and friends congratulate them both and send our very best wishes. "An afternoon tea to celebrate this occasion is going to be held next Wednesday 22 May 2024 at the Kowhainui Rest Home where they both currently reside."

Whanganui Jazz Orchestra to perform at Manawatu Jazz and Blues Festival

Whanganui Jazz Orchestra (WJO) will be representing Whanganui on Sunday, June 2nd, at the Big Band Bash in Palmerston North.

There will be four bands from Wellington, Hawkes Bay, Palmerston North and our own WJO performing great music from 2pm to 5pm at the Globe Theatre.

Whanganui Jazz Orchestra will be presenting an exciting programme that will really get the crowd going, from Swing to Latin, Funk, Rock and Pop.

Featured with the band will be the highly talented Joel Williams from the New Zealand Army Band. Joel is a fantastic vocalist, trumpet player and trombonist. He will be singing a great rendition of The



Whanganui Jazz Orchestra

Lady Is A Tramp, recently recorded by Tony Bennett and Lady Gaga, with the band's talented vocalist Bridget Cook.

The band is very strong and has really developed

under the direction of Riwai Hina to the extent it is very busy in Whanganui and the Manawatu and has also gained a lot of attention from other Jazz festivals, notably Tauranga and

Christchurch. The Globe Theatre is at 312 Main Street. It would pay to book. Contact Event Finder – phone 06 3514409 or on-line.

FOR THE BEST HIRE EQUIPMENT IN TOWN

MARQUEES • MACHINERY HIRE PARTY HIRE & SALES

HARRISON'S HireMaster WANGANUI

26 CHURTON STREET PH 345 7017



CONCRETE SACRIFIER

1.5 TONNE DRUM ROLLER

360KG PLATE COMPACTOR

www.hiremasterwanganui.co.nz

COOL WINTER DEALS!

1 WAY, 1 PERSON



FARES FROM: \$89*

KAPITI COAST TO AUCKLAND

FARES FROM: \$299*

CHATHAM ISLANDS TO AUCKLAND WELLINGTON CHRISTCHURCH

FARES FROM: \$69*

WHAKATANE TO AUCKLAND

FARES FROM: \$79*

WHANGANUI TO AUCKLAND

airchathams.co.nz

* Travel period 1st June – 31st August. Promotional fares do not apply to every flight. Sale ends 31st May. T&Cs and travel dates apply.



Your family in the sky to whanau i te rangi

Repertory Theatre committee hope to purchase historic premises so the 'show can go on'

By Mark Dawson

As the saying goes: "The show must go on..."

And that's the aim of members and supporters of Whanganui Repertory Theatre whose 142-year-old building has been marked for demolition.

Owned by Whanganui District Council, the council's current proposed Long-Term Plan says the theatre is "no longer fit for purpose", requiring significant repairs, including earthquake-strengthening and a new roof, while the bank behind the Rep has collapsed onto the outer wall of the building.

With a full rebuild priced at \$2.6 million, closing the theatre and demolition is the council's preferred option.

However, Rep members have rallied and want to see the "curtain up" on a new era for a theatre that has become such an important part of the local cultural scene and which has given so much pleasure to audiences.

At a public meeting in April to consider the building's future, Deputy Mayor Helen Craig suggested the Rep company may be able to buy the building for \$1 and take over responsibility for its maintenance.

She believed the council would – as part of the deal -- build a retaining wall to stabilise the bank at a cost of \$250,000, adding 60 cents per property per year for 10 years to rates.

Cr Craig said she had been fighting for more investment into the theatre over a number of years but had "got nowhere".

"If Repertory is interested in buying the building then, surely, council needs to retain the bank," she told the public meeting.

And Rep president Mark Morton said that was the plan, with an approach made to council to acquire the building for \$1.

"We are willing to take it on, aware of the work that will need doing, and we are confident we have the backers to make that viable.

"We are hopeful the council will repair the retaining wall and we believe it will look at that positively."

With regard to the well-attended public meeting, he said: "I was impressed by the number of people who turned up who had nothing to do with the theatre – that was encouraging."

He did not expect a response from council until after the deliberations on the Long-Term Plan in early June.

As well as four to six

public shows each year, the theatre is used by Whanganui Performing Arts three times a week – they produced the recent Letters From The Titanic -- and is a testing ground for young talent, covering performance, speech, ballet and brass bands.

"There are a lot of young folk in the theatre – our pantomime on Vintage Weekend had around 25 children in the cast," said Mark.

Built in 1882, the building was Whanganui's first public library up until 1933.

A council report last year noted: "The theatre engages well with young people with a strong development focus with their youth programme.

"The theatre has been an excellent tenant over the past 90 years and has developed an excellent reputation for classic theatre.

"The doors have only been closed once, due to Covid, and the theatre operates 12 months of the year. The theatre has been booked out solidly throughout the year and they have had to turn away inquiries for use of the facility."

The report said Rep plays "a valuable role in enabling social cohesion and promoting the Whanganui creative sector regionally and nationally."



Whanganui's 142-year-old Repertory Theatre building on Ridgway Street.

REVIEW: NZ String Quartet romanticism and impressionism

May 02, Concert Chamber concert

By Albert Sword

Helene Pohl, at the end of her introduction to Brahms Quartet #3/opus 67, said to the audience, "We'll see you in about thirty minutes." A lovely intro idea maybe, but also an awakening for the casual Chamber Music listener that they are in for thirty minutes of beautiful, intense classical music played by a world class Chamber Quartet ensemble. One doesn't think of music in such large thirty-minute blocks (the average song is about 2 – 4 minutes) or just how the ensemble is going to keep the listening tension; the listeners attentive, yet the NZSQ does it every time they take the stage. Superbly.

Mind you; it helps when you are playing the opus of a genius – or two or three - to have such a dedicated quad of brilliant musicians interpreting the wee black notes on the stave. Even if they now show up to the musicians, beautifully lit, on iPads.

Normally I would comment, I hope, eruditely, on the pieces of music performed on stage, but I think with this review, I will concentrate on the wonderment of being kept on the edge of my seat, time never a problem or an

expectancy, by the Quartet, whether it be playing Leonie Holmes augmented Fragments, Brahms enormous Op. 67, or the totally seductive Debussy G minor, Op 10.

This Quartet plays from the toes up; it excites and delights the listener, casual or expectant, with impeccably breathed music that seems to come from I am tempted to say, heaven, and while heaven may be up for interpretation, the NZSQ's readings of the three pieces on offer to the delighted Whanganui audience, took interpretation into the stratosphere. Yes, that will do.

It was Monique Lapin's last gig as 2/violin with the quartet; it's sad to see her enormous musical energy go. 1/violin, Helene Pohl's soaring control of her instrument was totally masterful, Gillian Ansell complemented beautifully the higher strings, and Rolf Gjølsten's cello, never louder than lovely, was just magic. There was something for everyone in this programme: classical, impressionist and modern, and the loyal and knowledgeable Whanganui audience warmly applauded the three pieces and the magicians who brought them to life. A stunning Whanganui Chamber Music Society concert.

FROM WHANGANUI TO THE WORLD



It's the perfect & affordable time to take flight to your dream destinations this winter from Whanganui, via Auckland with Air Chathams!!

So get on board and support local!

airchathams.co.nz



Hot flight deals for you!

- Auckland (AKL) to Sydney (SYD) - \$629 Economy Return
- Auckland (AKL) to Brisbane (BNE) - \$645 Economy Return
- Auckland (AKL) to Fiji (NAN) - \$689 Economy Return
- Auckland (AKL) to London (LON) - \$1935 Economy Return



Your family in the sky
to whanau i te rangi

Wanganui Veterinary Services celebrating 30 years in Somme Parade premises

Wanganui Veterinary Services (WVS) moved to their Somme Parade location in 1994 from Bates Street, and during May, they are celebrating 30 years being there by offering a different prize each day in a draw to those who used their services the day before. Daily winners are announced on the Wanganui Veterinary Services Facebook page.

WVS and the vet services offered was previously operated by the Wanganui Vet Club, which is owned by farmers who pay a small fee to be a club

member. Manager of WVS Tom Dinwiddie explained that Vet Clubs were set up all over the country and they helped encourage vets to come to smaller centres.

As the practice grew, there has been a transition from the Wanganui Vet Club running a vet business, to Vet staff having ownership and so WVS was incorporated in 1989 to achieve this. The Wanganui Vet Club continues to own the building and WVS leases the building and runs the veterinary business from there.

With the downward trend in farm numbers, the growth of pine plantings and reversion of farmland to mānuka, the balance of WVS services has changed. While farming remains very important, there has been a growth in demand for services for small animals, especially pets. “We endeavour to employ vets that have an interest in both large and small animals,” says Tom, “and we can offer a locally based after hours service to our clients, the only Vet service in Whanganui able to do so.”

Pre 1994, 35 Somme Parade was the Riverside Tavern. Wendy Swann was the cleaner there for about eight years and has continued on with WVS over the past 30 years. She says, “The Riverside Tavern had a restaurant where the Pet Essentials shop now is, a stage, a bistro, a public bar and upstairs there was also a function room. It had changed hands a number of times.”

When asked what was easier to clean – the tavern or WVS – it was a quick response – the Vet Services.

But Wendy does more than cleaning. She also does ‘faecal egg counting’. Tom explains, “Farmers have to continually drench their animals to prevent parasites, and so we test for their eggs under a microscope ten days after drenching.” As a female parasitical worm can produce up to 10,000 eggs a day, the service is

vital. Wendy works on a grid and uses a multiplier of 50 to work out how many eggs per gram in each sample, which helps farmers assess worm burdens, the need for drenching or how effective their last drench has been.

The switch from tavern to vet services was smooth, with the food chiller becoming the area to store vaccines and a large area upstairs used for dog training programmes and industry meetings. “It has stood up well to the rigours of cats and dogs with minimal changes apart from repainting the exterior,” says Tom.

Is Leonie Moody in the picture?



John Thurlow is trying to work out who is who in a picture of the first women’s crew to represent the University of Otago, and in particular the person who is second from the left.

“This is the crew photo taken on the banks of Avon River about April 1969,” John explains, “during the NZ Universities’ Summer Tournament. All were Phys Ed. folk – except the girl in question.”

It has been suggested to John that “This young woman is one Leonie Moody. If so, I went to Intermediate with a Leonie Moody in 1957/8 – I have a class photo with her name written on it. She would be my age and probably 3 or 4 years older than the others.”

If you can identify the person, please email or phone the RCP at rivercitypress@xtra.co.nz or (06) 345 3666.



Wendy Swann with WVS owner, Tom Dinwiddie

WANGANUI VETERINARY SERVICES ARE CELEBRATING 30 YEARS AT 35 SOMME PARADE

To celebrate... we will be giving a prize away... every week day... For the month of May

WVS

Customers of the day can go in the draw for a mystery prize which will be announced the following day. Like or Follow Wanganui Veterinary Services on Facebook to find out the lucky winner

123 Mart moves into Victoria Avenue



Julie and Charlotte at the front of the store.

123 Mart has been based in Trafalgar Square for a number of years but has recently moved to 139 Victoria Ave, next door to 141 Bakery. This new location is on the sunny side of the Ave and is bigger than their previous premises, enabling them to avoid the overcrowded look of other similar stores. It also has plenty of storage space, allow-

ing them to replenish stock quickly. The store stocks a wide range of items – from anything to everything -- but a brief summary would include cards, party supplies, gift boxes, wool to children’s gum-boots, kids toys, kitchen items, arts and crafts, stationery, cosmetics, orthotics and so on.

Julie is the manager, supported by Charlotte,

who both have a good working knowledge of the stock and where it is, and Carol, who works casually when required. Julie points out that “123 Mart is more than another \$2 store. Our wide range of goods includes items up to \$40.”

The store is locally owned and operated. Their opening hours are Monday to Saturday 9am to 5.30pm.

**Join us at our New Location
139 Victoria Avenue,
Whanganui**



Win Back Your Purchase

May 16th to 18th open to everyone

Simply make a purchase and ensure your name and number are on the back of the receipt for a chance to participate.

the 123 MART

**139 Victoria Avenue,
Whanganui**

Thrive Whanganui launches '100 Days, 100 Hours' initiative to empower entrepreneurs



Thrive Whanganui, a leading community organisation dedicated to supporting local entrepreneurs, announces the launch of its groundbreaking initiative, '100 Days, 100 Hours'. The aim of this initiative is to raise funds over the course of 100 days to ensure that 100 aspiring entrepreneurs can access Thrive's transformative Hour to Empower programme.

Thrive Whanganui, a registered charity, is committed to fostering economic growth and empowering individuals to reach their full potential. Through various programmes and services, Thrive provides invaluable support to entrepreneurs at every stage of their journey, from idea conception to business expansion.

At the heart of Thrive's mission is the Hour to Empower programme, offering a free one-hour initial business consultation to aspiring entrepreneurs. This consultation serves as a vital steppingstone for individuals looking to turn their business ideas into reality or take their existing ventures to new heights.

"We believe that every aspiring entrepreneur deserves the opportunity

to access the resources and guidance they need to thrive", says James Paul, Partnerships and Programme Lead for Thrive Whanganui. "With the '100 Days, 100 Hours' initiative, we're not only raising funds but also creating pathways for individuals to pursue their entrepreneurial dreams".

The '100 Days, 100 Hours' initiative invites individuals, businesses, and organisations to contribute towards the goal of providing 100 hours of free consultation to 100 deserving entrepreneurs. \$100 will see one hour purchased and one more Entrepreneur supported in their dream endeavour. Whether it be \$100 or \$20 every contribution makes a tangible difference in empowering local entrepreneurs and strengthening the community's economic landscape.

To learn more about Thrive Whanganui's mission and how to get involved in the '100 Days, 100 Hours' initiative, visit Thrive Whanganui's website www.thrivenow.org.nz or contact the team at ki-aora@thrivenow.org.nz

Together, let's make entrepreneurship accessible to all and continue to build a thriving future for our region.



MAY 20-26

Midnight basketball for Youth Week

Sport Whanganui is pleased to be supporting Whanganui Basketball again this year with Midnight Basketball during Youth Week, May 20-26. The extremely popular Midnight Basketball will

be held on Friday, May 24 with doors opening for registration at 8.30pm. Tamariki and rangatahi (children and young people) are welcome to come down to

Springvale Stadium to shoot some hoops and enjoy the atmosphere with games and spot prizes. This is a safe space for all tamariki and rangatahi to have a go at basketball, hang out with their friends and family and share some food.



LEGAL ADVICE, INFORMATION ASSISTANCE & EDUCATION



COMMUNITY LEGAL ADVICE WHANGANUI

Proud to support YOUTH WEEK

Drop in and see us at:
Suite 2, 236 Victoria Ave, Whanganui
Phone 348 8288



TRAINING OPPORTUNITY

Are you aged 16-24 years?

He Huringa Ora o Wahine is an inspiring 10 week program for young women (and mum's) aged 16-24 years looking to discover their pathway to a successful future. Continued job coaching and pathway support available post course. Call now to enquire about next terms enrolments **06 343 5015 extn 2 Training**

Proudly supporting YOUTH WEEK
WAI ORA CHRISTIAN COMMUNITY TRUST
49 Brunswick Rd, Aramoho, Whanganui

Student becomes 'Principal' of St Marcellin School for one day



Sandy Cuff our school board presiding chair person with 'principal' Taniela Rasable

Taniela Rasable from St Marcellin School won a Speech Writing Competition last year to be 'Principal for the Day'. "He wrote a very convincing speech about all the

things he would do if he was Principal for the day at our school," reports the usual principal, Belinda Backwell. On Friday, 10 May, he actually got to undertake

his 'Principalship' and help run St Marcellin School for the day. Taniela had to plan the activities he wanted to do. He checked some invoices for payment and ran some errands down at Mitre 10, where he sourced and bought plant trays for the senior class to start their bean plant life cycle project next week. Then it was time to have a special morning tea with the school's Presiding Board Chair, Sandy Cuff.

Next, Taniela planned some fun activities for all the students, including a scavenger hunt and quiz. The Whanganui Community Sports Trailer had been lent from Sport Whanganui and all the students enjoyed playing with all the various sporting equipment.

Taniela's final job for the day was school assembly and handing out ice blocks to the students as they went home. Belinda Blackwell, summing up, said, "What a great day for all, and a fantastic job as Principal by Taniela."

Walking football on again this Sunday

What a great turnout last Sunday. Nearly 40 players took to the fields despite the poor weather and it being Mothers Day. We had players from 10 years old to 65 plus enjoying walking football, and it was great to see plenty of ladies wanting to have a go. Two family teams also enjoyed three generations playing together or against each other. What other sport can grandparents join in with their kids and grandkids for a fun family time?

Everyone enjoyed it so much that the rain didn't stop them, and they played on for another half hour.

The simple rules of only walking, no tackles and no high balls meant all ages could enjoy themselves without worrying about getting injured.

Organiser Ian Ross said one Saturday afternoon football player was heard to comment that it was the hardest game he had played that walking made everybody equal, so it became a game of passing skills.

It's on again this Sunday, 3.00pm at Peat Park. Come along and have a go or just enjoy the spectacle of kids and adults having fun together.

Thank you to Rob Moore from Moore Law for sponsoring the walking football. There is no cost to participants.



Choose a safe and bright future for your whānau

Proud to support our Youth.

Let's make Aotearoa the best place in the world to grow up: a place where all children are safe, families are strong and communities are connected.

Family Works Whanganui offers a range of professional support including Ministry of Justice approved safety programmes, counselling, mediation and parenting support.



To learn more about how Family Works Whanganui can help you
Call us on: 06 345 6681
or visit: www.familyworkscentral.org.nz





MAY 20-26

Youth encouraged to take up challenges

Youth Week from 20 to 26 May is a nationwide festival of events organised by young New Zealanders to celebrate the talents, passion and success of local young people.

Youth Week aims to amplify young people's valuable contributions to their communities by supporting them to design, deliver and evaluate all aspects of the week. The hope is for the country to be a place

where young people are vibrant and optimistic and are supported and encouraged to take up challenges.

Youth Week Events

are designed to encourage young people to take on challenges, share ideas and focus on the positive aspects of being young and to recognise

the youth workers, youth service providers and others working with and for young people.

We identify young peo-

ple as those aged between 12 and 24 years old.

The 2024 Youth Week theme is:

'Māwherangi a tama

roto ka taka, kāpuia ake ka pūrangiaho'

'We may not have it all together, but together we have it all'

Experience the world of game app design - free for 10-13 year-olds

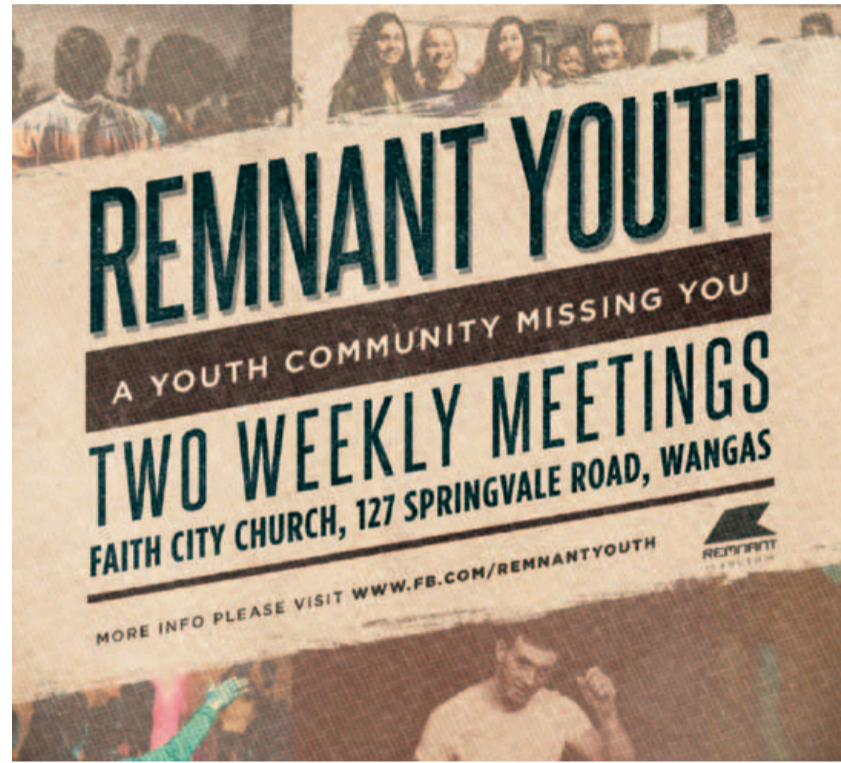
If you are 10 to 13 years of age, you can be guided through an experience that shows you the exciting world of game app design on Saturday June 1 from 9am to 2pm at The Backhouse at 28 Taupo Quay. And it is free.

It's called Game Jam. You will use the Brave Venture's game simulator to create your own action-adventure game, where you will collect coins and defeat enemies. Then after lunch (supplied), you'll work together to create a new game for 2024.

Laptops are provided.

Game Jam is powered by Tech Step, Excel Refrigeration, The Backhouse, Empire PR and The Brave Venture.

As there is limited space for 25 students, register now by going to Game Jam Whanganui Application — The Brave Venture (tbv.org.nz)



100% of Students in Whanganui in Education Employment and Training

www.sweetwhanganui.org.nz



Connecting 15 - 18 year olds with meaningful education, employment and training.



Nostalgic day at the Whanganui Toy Fair on this Sunday

On Sunday, the 19th of May, the third annual Whanganui Toy Fair will take place at Springvale Stadium, 222 London Street, from 11am until 2pm. Entry fee is just \$5, with under 16's free.

There will be over 140 tables of collectable toys for sale from all the major toy brands, stretching back over the last 70 years represented.

Come for a nostalgic day out and bring the whole family. Relive those childhood memories of the old when toys were the most important thing in life. Spot the toys you had as a child and wonder about what ever happened to them! Bring the children and grandchildren, show them what playing was really about. No Xbox in our day, just a simple toy box.

Catch a preview of what it's all about on YouTube. Visit us on Facebook and Instagram.

The Whanganui Scout group will be back with a sausage sizzle, tea, coffee, cakes and sandwiches for sale to raise money for their upcoming activities.

The Wanganui Vintage Car Club will again be putting their wonderful

display of old cars.

Come down and have a look. Spot your favourite car and then go inside Springvale Stadium and see if you can find a model of it.

Rotary are also putting a vintage car in our car display which they hope to auction off at their big book fair in June.

Outpost 42nd, Garrison of the 501st legion will be again milling around attendees for photo opportunities. Don't know who they are? Then come down and find out. They were very popular last year.

Event souvenirs will again be available for sale, with proceeds going to support local charities and groups. Last year, the model vehicles, button badges and commemorative envelopes proved very popular, as did the lucky dip for the children.

Something a little different this year is the button badges being used as tickets for the event. The first 400 paying attendees will get one as proof of entry.

Rotary will provide volunteers to help to set up and pack up the tables. Doing odd jobs during the day and this year have a free

table of their own to sell toys.

Another first for the Whanganui Toy Fair is a competition for the stall holders to see who has the best table of toys for sale.

There is also a tote bag for out-of-towners to help promote Whanganui and the region.

Everyone is encouraged to make a weekend of it, especially as we have six really good second-hand shops that have toys for sale. There is also a toy museum.

The main charity supported this year is Somerville Centre. A disability support service for children and young adults.



1967 Wolseley 16/60 car to be auctioned as part of Rotary Monster Book Fair



count, the cost of hiring the Memorial Centre for that time period is not cheap. They will need to sell a lot of books to cover the cost before being able to donate profits to Life Flight and a range of Rotary Youth Projects in our community.

They have reached out to obtain sponsorship and including businesses giving in kind such as the costs of printing, promotional materials and sandwich boards.

Hinemoa Boyd has offered one of the vehicles from the collection of vehicles her late husband Ed had gathered, to be auctioned to support the Book Fair. This is a 1967 Wolseley 16/60 car – one of Ed's favourites. It has done 57,000 miles, has a current WOF and Rego, is in good condition, runs well and is ready to drive away.

It will be parked up outside the Toy Fair at Springvale Stadium this Sunday from 11am to 2pm. It will be a chance to see and admire the two tone family car, popular in the 1960s. The Wolseley car company was the largest in Britain in the 1920s but lat-

er became part of the Morris car group and then BMC and British Leyland. The name was dropped by 1970.

The auction will take place on the Memorial forecourt and Brian Hayward from Hayward's Auctions will be the auctioneer, having volunteered his services.

The Book Fair itself will be another Monster, with probably over 60,000 books available, supplemented with books donated from the Red Cross and St John. While all the favourite cate-

gories will be there, as well as jigsaws and DVDs, this year there will be a good collection of Collectable and Specialist books, especially in the military category (the jigsaws have all been

checked to ensure that no pieces are missing).

There will also be a number of raffles during the book fair, with prizes donated by local businesses. Tickets will be only \$2.



G. Bristol & Sons

Proudly supporting the
WHANGANUI TOY FAIR

PLUMBERS & GASFITTERS

REGISTERED DRAINLAYERS

CERTIFIED

25 Cooks St, Wanganui
Nigel
Mobile: 0274 459 148
email - nigandsalross@xtra.co.nz

Master Plumbers
Representing Excellence

ROTARY CLUB OF WHANGANUI

MONSTER BOOK FAIR

Whanganui War Memorial Hall
31 May - 3 June
9 am to 4:30 pm

Proceeds will be shared between
Life Flight
and programmes helping local youth and community

What's in store for the housing market over the winter months?

It's shaping up to be another difficult winter for the housing market, with interest rates, inflation, and rising unemployment continuing to bite.

Residential property values have largely plateaued across New Zealand in recent months. Our latest QV House Price Index shows that the average home value increased nationally by just a fraction of a percentage point (0.1%) in the three months to the end of April 2024 to \$926,772 – a significant slowdown from the 2.2% quarterly home value growth recorded at the end of March.

The national average home value is now 2.7% higher than at the same time last year, but still 12.9% (\$136,993) below the market's peak in late 2021.

However, home values are continuing to slowly grow in Whanganui, at a pace quicker than the national average (up just 0.1% this three-month period)

QV operations manager James Wilson commented: "What little momentum the housing market still had going into autumn appears to have all but evaporated

now. Home value growth has largely stalled across much of the country, reflecting difficult economic conditions that aren't getting any easier and aren't likely to anytime soon.

"The economy is doing it tough right now. High interest rates continue to bite, inflation remains stubbornly high, and the unemployment rate is rising. Business confidence is low and cost of living pressures remain a significant challenge for many households. Amidst all this, a surplus of real estate listings is helping to maintain downward pressure on prices."

The latest figures show the Whanganui average house values went from \$507,643 in January, to \$517,344 in April.

Auckland's three-month rolling average is negative for the third straight month (-0.7%), with Napier (-0.2%), Hastings (-0.7%), and Palmerston North (-0.1%) following suit in the April quarter. Home values also remained completely flat in Hamilton (0%) and flattened out in Tauranga (0.2%), Wellington (0.6%) and Christchurch (0.2%).

Just Rotorua (3.6%), Dunedin (2.1%) and In-

vercargill (3.2%) bucked the prevailing trend this quarter – though it remains to be seen whether this home value growth will continue as what is traditionally the peak selling season for real estate starts to wind down for winter.

"Sales volumes are already relatively low and are likely to drop even lower as winter officially sets in. So what little growth there is will continue to be patchy and variable – but the overall trend appears to be a property market that is in a sort of stasis until conditions improve, which almost certainly won't be until after winter," Mr Wilson said.

"Given the circumstances, a flat market is to be expected. It will provide a stable foundation to step

up off when interest rate pressure finally begins to ease, but that won't likely be until late this year, if at all in 2024. In the meantime, mortgage holders are finding ways to hold on and banks are being supportive where possible."

Meanwhile, first-home buyers have the upper hand, provided they have stable employment and finance in place. "Although getting finance and being in a position to service a mortgage in this economic environment certainly isn't easy, buyers now control the narrative in most areas. They have time on their side and plenty of options to choose from," said Mr Wilson.

"We haven't seen large numbers of investors re-enter the market following

the recent reintroduction of 80% interest deductibility for landlords, and the looming introduction

of debt-to-income restrictions will almost certainly hamper their ability to purchase existing prop-

erty when it eventually happens. So it seems like we could be in for another quiet winter."

Rug exhibition unveils nature's mathematical tapestry



Space Studio and Gallery will be holding a rug exhibition by Manawatu-based scientist and now full-time weaver, Laurence Gatehouse. This unique exhibition promises to offer a journey into the fusion of nature and mathematics through weaving. The exhibition opens on Saturday, May 25, The Space Studio and Gallery is located at 18 St Hill St and open Wednesday to Saturday, 10am-2pm and Friday nights 4pm-6pm.

Laurence's rugs stand as a testament to his unique blend of scientific inquiry and artistic expression. Drawing inspiration from the intricate patterns found in nature and mathematical

tessellations, he asks his viewers to consider an interplay between art and science.

"Everything in nature is made of a small set of repeating entities... nature, whilst derived from repeating elements, is so complex that every individual leaf on a tree is unique and yet easily identified as a leaf for a particular species of tree."

In the neighbouring gallery spaces, captivating pieces of another Manawatu-based artist Paula Clare King and local artist Rowan Love will be on display. Between the three exhibitions visitors will enjoy diverse perspectives and will have a rich art experience.



Stella
STELLA DESIGN CO
KITCHENS BATHROOMS INTERIORS
Professional Kitchen & Interior Designer
www.stelladesign.co.nz NKBA National Kitchen & Bath Association

SELF STORAGE
Harcourts Whanganui
Easi-stor SELF STORAGE
KAIKOKOPU RD WHANGANUI
SELF STORAGE UNITS.
Sizes from: 5.1m³ to 48.6m³
Prices from \$9 per week
NOW MANAGED BY Harcourts Whanganui
Rivercity Real Estate Licensed REAA 2008
Phone 06 349 0883

BEFORE YOU RENOVATE - INSULATE!
Internal External Ceiling
INSULMAX
INSULMAX
INSULMAX
'Contact us today and start saving tomorrow'
INSULMAX WALL INSULATION SYSTEM
Our install teams are all trade certified. insulmax.co.nz
CONTACT: Stephen Jestin 027 323 1000 or Email: kathleen@insulmax.co.nz

STREETS FOR PEOPLE BLOCK PARTY!!!

SATURDAY 18th MAY

10am - 1pm ST HILL STREET Public Transport Hub Celebration
LIVE MUSIC, SAUSAGE SIZZLE & GIVEAWAYS

1pm - 8pm GUYTON STREET BLOCK PARTY!!!
LIVE BANDS AND DJ, FOOD TRUCKS, FUN FOR KIDS & MORE!

New streetscapes to be celebrated with epic commun

The new streetscapes on Guyton Street and St Hill Street are set to be celebrated with a free community party on Saturday 18 May featuring an epic lineup of local bands and musicians, delicious kai and fun and games for young and old!

90% funded by Waka Kotahi, the Streets for People Block Party marks the completion of the Streets for People project on Guyton Street and lower St Hill Street – and the wider work to improve bus shelter facilities across the city through the Transport Choices programme. Whanganui Mayor Andrew Tripe says it's brilliant that Whanganui will have a chance to come together and celebrate these new community-designed spaces with a party funded by Waka Kotahi. "In tough times, it's important to provide the community with opportunities

to come together and have some fun. So, it's a great result that NZTA Waka Kotahi has allocated this event funding to Whanganui. As well as promoting community wellbeing, events like this are also a chance to shine a light on our incredible local artists and musicians!"

The party will feature two distinct event spaces – lower St Hill Street (where a public transport hub has been created) and Guyton Street (between St Hill Street and Victoria Avenue) where a new community park and streetscape has been developed.

The first section of the event will be the Public Transport Hub Celebration on St Hill Street (next to the Trafalgar Square carpark), running from 10am–1pm. Chilled out in nature, it will feature live music with a pop-up baby grand piano on-site and local musicians, including Hot Potato, Brass Whanganui and local UCOL music students providing a morning serenade. Along with the music, there'll also be free face painting for kids, a sausage sizzle raising money



Hot Potato band



Roots Provider band



Damn Raucous Brass



Country western songstress Sophie Toyne

for the Whanganui Women's Network, and special Bee Card giveaways. Just before 1pm a group of local cycle enthusiasts – including Green Bikes Whanganui – will pedal their way up from the St Hill Street site to Guyton Street (via the town centre) – marking the transition to the next event space: the Guyton Street Block Party. Running from 1pm–8pm, the Block Party will see the section of Guyton Street between St Hill Street and Victoria Avenue closed to traffic, allowing for the street to be transformed into a space for the community to party and play! One of the key features of the new Guyton Street streetscape, built through the Streets for People programme, is a new green space called Corwen Park (next to Mischief Café). The park will act as a dance floor on the day with a stage truck set up in the car park behind it playing host to a bevy of local bands and musos. The lineup on the stage includes veteran Castlecliff reggae band Roots Provider, super talented 14-year-old country western songstress Sophie Toyne, skiffle legends Hot Potato, iconic brass ensemble Damn Raucous Brass, newly-formed blues band BB and the Bullets, and emerging soul funk outfit Ngati Stank. Along with the live music, DJ Shady Lady will be dropping eclectic beats between bands, and the much-loved Taikura o te Awa Kapa Haka group will be giving a special performance too. To ensure the punters don't get hungry, there'll be a range of kai trucks – alongside the cafés and eateries on Guyton Street

itself who'll be opening late and providing special menus for the big event. The Block Party will also have a strong focus on fun for rangatahi with a special play zone featuring bubble blowing, puppetry, face painting and traditional Māori games. For more information, visit whanganui.govt.nz/streets-for-people

The Streets for People Block party has been made possible thanks to funding from NZTA Waka Kotahi through the Streets for People and Transport Choices programmes – as well as in-kind support from Whanganui District Council, Horizons Regional Council and Mainstreet Whanganui.

Paiges.TM

THE BOOK GALLERY

We would like to say **THANK YOU** to all those concerned for the beautification of Guyton Street.

60 Guyton Street, Whanganui 4500
Phone 06 348 9095

Award winning artist
Nick Fletcher

Warm, friendly atmosphere

Hospital grade sterilization

Custom design or bring your own

OPEN
Tues - Sat
10.30am till Late

84 GUYTON STREET
WHANGANUI

027 877 7157

100% WANGANUI INKED AND PROUD

fletchersketcher@xtra.co.nz
www.flamnantattoos.co.nz

Commercial | Industrial | Sales | Leasing

A wealth of hands-on experience.

Proudly supporting the
Guyton Street Block Party

For all your commercial real estate needs, give me a call today!

Richard White Commercial Sales Consultant
M 027 442 6171 E richardw@pb.co.nz

Licensed REAA 2008 | PB068490

Property Brokers^B
Commercial Real Estate

Laird Park Bowling Club raises \$2000 for Ratana Junior Rugby

Each year, Laird Park Bowling Club raises funds through a bowls tournament to donate to one of the junior rugby clubs.

The tournament is for the Laurie Penn Memorial Trophy, named after the foundation member of the club, who was also a member of Kaierau Rugby Club as well as Whanganui Rugby. Laurie would organise the tournament and after his death the club has continued it on in his legacy.

The bowls tournament attracts teams from all over the country, and this year had 120 players. The club is able to get sponsorships, donations and holds raffles. All monies raised goes to local junior rugby, and this year \$2000 was raised for junior rugby at Ratana Rugby Sports Club.

There was a big list of sponsors including Sportz



Kamaka Manuel, Ratana Club Chiarperson, Isaac Fonotoe, Ratana Junior Rugby, players Himeue Manuel and Betty Brown with Darryle Curry, President, Laird Park Bowling Club

Bar, Property Brokers, Marine Tackle Whanganui, Pak'n Save, Shane Stone Builder, Columbus Coffee, Speedy Signs, Wool-

worths, Mitre 10 Mega, Hell Pizza, Bidfood, Liquorland, Whanganui Motors, Wedding & Event Services and the Whan-

ganui District Council. Much of the credit goes to Laird Park Club Captain Cristian Fifield and Shirley Dallimore.

Community party this Saturday!



BB and the Bullets local band

Visit whanganui.govt.nz/streetsforpeople for more information.

These events are funded by Waka Kotahi through the Streets for People and Transport Choices programmes.



Whanganui Riding for Disabled hopes to have raised \$20,000 from celebratory auction

The Whanganui Riding for the Disabled held a well-attended Celebratory Auction on Friday evening, 10 May. The theme was 'Cowboys' which was handy, as many attendees wore appropriate style hats, which kept their heads warm as it was a very cold night.

The auction of horses and ponies was an auction for sponsorship, and there was rapid bidding with prices ranging for about \$1200 to a crowd favourite Mohawk, a 20 year old miniature, who achieved \$1800.

This was followed by another auction, and this time you kept what you successfully bid for. This includes a handmade doll's house as well as a handmade dog house, trailer-loads of firewood, rounds of golf, coffee, eyebrow tattoo, over 100 pieces of Whittakers chocolate and dinner for two, and vet and farrier services. There were also donations from people who couldn't make it to the auction.

The businesses who donated goods or services included Hunterville Vets, farriers Ian Hackett and Nicholas O'Leary, Whittakers Chocolate, Beaver Tree Services, Etched Beauty, Belmont Gold Club, Castlecliff Golf Club, Palamountains, Brew Bros, Matthew's Nursery and Gonville Nursery.

Robyn Mann from RDA says, "Hopefully we will have raised around \$20,000."

The tables were spread around their riding arena, and dinner was supplied and cooked totally free of charge by the Rapid Relief Team, the charitable arm of the Plymouth Brethren

Church. It would have to rank as the best meal at a charitable event ever, with patrons commenting on how succulent the beef was, the variety of vegetables, the presence of pomegranate seeds in the salad and so on – and it was all done outside on the RRT's food cart.

The guest speaker was well-known and very successful jockey Lisa Allpress, long-time strong supporter of Whanganui RDA. While she chronicled the development of her career and outlined the

great successes she has achieved, she also spoke about being outwardly confident but inwardly nervous, having to cope with negative voices.

Riding makes her internally happy and has led to close to 2000 wins. She was the first female jockey in New Zealand to reach 1000 wins. She has raced in nine different countries, and when she won in Saudi Arabia, it was the first by a female jockey. She has won the New Zealand jockey premiership four times, and in the 2021

New Year Honours was appointed an Officer of the New Zealand Order of Merit for services to the racing industry.

While there have been extreme highs, there have also been some very sad times when she has lost good friends killed while racing. "It is the only sport where an ambulance and paramedics must follow the race." She has had her share of injuries.

Robyn says, "We've come so far in the last year. We feel the community is embracing us."



Horse Mohawk

'Prima Facie' - a powerful and dramatic must-see play

'Prima Facie' opened at Centrepoint Theatre in Palmerston North last Saturday to a packed audience and Whanganui couple Warwick and Jan Bullen describe it as "a powerful and dramatic must-see play. It is a sharp-witted, gritty one-woman show, which has played to sold-out audiences throughout Australia, the West End and Broadway."

It is a Laurence Olivier award-winning play; Centrepoint's production stars Mel Dodge as Tessa and is directed by former Whanganui resident and ex-RCP staffer, actress Lyndee-Jane Rutherford.

It is a story of a criminal defence lawyer

at the top of her game, who herself becomes a victim of sexual assault by a male colleague. The ensuing court case finds her colleague not guilty, and questions are asked – who is our flawed legal system serving?

High Court Judges in Northern Ireland are required to see the play, as are members of the work-wide legal fraternity to assist in their professional development.

"It is a mesmerising and outstanding production – theatre at its very best and highly recommended," conclude Warwick and Jan.

It is on at the Centrepoint Theatre until 26 May.

Whanganui | Rangitikei | South Taranaki



26 Alexander Street, Central City

2 Bedrooms 1 Bathroom 1 Garage

For Sale by Matt Robertson - 021 886 815

Open to view: **By appointment.**

Scan the QR code for associated documents, the HD video & 2D Floor Plan. These can also be viewed and downloaded at this link: arizto.co.nz/property-search/26-alexander-street-whanganui-centre

Buyers
\$440,000+



53 Nelson Street, Central City

3 Bedrooms 1 Bathroom 2 Garages

NEW LISTING by The Bournes - 021 210 3883 (M), 021 164 2793 (R)

Open to view: **12.00pm - 1.00pm Sunday 19th May, or by appointment.**

Scan the QR code for associated documents, the HD video & 2D Floor Plan. These can also be viewed and downloaded at this link: arizto.co.nz/property-search/53-nelson-street-whanganui-centre

Deadline
Sale



1163 No 2 Line, Fordell

3 Bedrooms 1 Bathroom 1 Garage

For Sale by Penny Little - 021 216 6784

Open to view: **1.30pm - 2.30pm Sunday 19th May - or by appointment.**

Scan the QR code for associated documents, the HD video & 2D Floor Plan. These can also be viewed and downloaded at this link: arizto.co.nz/property-search/1163-number-2-line-fordell

Buyers:
\$549,000+



170 Parsons Street, Springvale

4+1 Bedrms 2 Bathrooms 2 Garages

NEW LISTING by Felicity Temple - 0274 836 753

Open to view: **By appointment.**

Scan the QR code for associated documents, the HD video & 2D Floor Plan. These can also be viewed and downloaded at this link: arizto.co.nz/property-search/170-parsons-street-springvale

Buyers:
\$729,000+



Comedy Gala returns on June 8 and includes separate Kids Comedy Show



Rhys Mathewson

Hello Comedy has presented a number of successful shows over the last few years, but this time they are also presenting the first ever Whanganui Kids Comedy Show featuring top comedic acts from around the country performing material tailor fit for 4 to 12 year-olds and their families...and it is all happening on June 8 at 2pm. It will be a 50 minute show at the Royal Whanganui Opera House.

The show will include well-known Rhys Mathewson, Bernie Duncan and Samantha Hannah. The headline acts will be El Jaquar and Zane and Degge.

El Jaquar is a high energy, highly interactive headliner and MC with an engaging audience rapport, built up over 25 years of international improvisational experience.

Zane and Degge are New Zealand's favourite comedy juggling duo,

combining juggling with their unique style of left-of field comedy.

Hello Comedy offered a chance for someone between the ages of 4 and 12 to tell a joke on stage at the Show at the Opera House. To enter they had to send a video message to the Facebook page telling a joke (they needed parental permission). The winner received a family pass for four and a chance to tell their joke on stage.

To book for the Kids Comedy Show go to rwoh.sales.ticketsearch.com/sales/salesevent/117410.

The Comedy Gala is also on Saturday 8 June and is from 7pm to 9.15pm. There will be a number of New Zealand's leading comedy legends as well as some rising stars. The showcase of ten comedians include Rhys Mathewson, who returns to host the show,

Jeremy Corbett, Angela Dravid, Courtney Dawson and local favourite Kajun Brooking.

The show will also feature food trucks. For the

adult show, a fully curated bar, including local craft beer from LADS on tap, will be available.

To book go to rwoh.sales.ticketsearch.com/

sales/salesevent/117410 \$5 from every ticket for the Comedy Gala, bought before the end of May will be donated to Hospice Whanganui.

B&C Motorcycles relocated to Whanganui



Steve Boyd, owner of B&C Motorcycles

B&C Motorcycles is owned and operated by Steve Boyd. It is a one-stop shop for all motorcycle servicing, repairs and maintenance requirements. 'BIKEBITZ', as the name suggests, is all about motorcycle parts, lifestyle apparel and accessories. There is also QMOTO which is a top-level motorcycle apparel brand offering quality and custom design if required.

The Boyd family came to New Zealand in 1985 from Scotland (you'll identify the accent easily), settling in Whanganui. Neil and Christine, Steve's parents, ran the Upokongaro Garage. Neil has always ridden motorcycles; from an early age, Steve came to share his passion.

Steve purchased his first road bike, a Honda CL175, which he used to travel to Boys College for

school each day. Some of the money came from working at the garage and other odd jobs in the area.

After doing a motor mechanic apprenticeship, Steve later did a motorcycle apprenticeship with Paragons. He later worked for Suzuki franchises in Mt Maunganui and in Pahiataua before setting up B&C Motorcycles in Hawera.

It was always his plan to return home to Whanganui, and in September 2023 he did. Steve purchased a large building and property in Keith Street as a new home for B&C Motorcycles and settled here with his children.

As a qualified motorcycle technician and a factory-certified technician familiar with a wide range of brands, Steve is a bit of an expert on all things related to motorcy-

cles. He can also cross purpose his skills to include servicing scooters, (he will be selling new scooters soon) ATV's and side X sides.

Apart from fixing them, Steve dismantles bikes, putting the parts online for sale through his Bikebitz website. Orders now come from all over New Zealand and overseas. On occasion, he will repair a bike to sell.

He is supported by his partner Sharon as office manager, a keen motorcyclist herself; his father Neil, his mother Christine, who lend their skills when needed, and a young volunteer, Richard, who one day will be an apprentice at B&C Motorcycles.

You can contact Steve on bandcmotorcycles@yahoo.com or on 027-427-9084.

- Wanganui Bridge club results -

Bridge Club Results - week ending 12 May
Monday IMPs after 5 rounds: 1. Simon Skill Rbyn Bowie Mark Dawson John Holt 75 2. Marjory & Gordon Keelty Gillian Pickett Pamela MacLachlan 67 3. Tracey & Owen Jones Mary Hoek Kevin Coombe 56

Tuesday Club Champ: N/S: 1. S Dempsey D Newman 61.73 2. D Price J Botting 55.96 3. J Newman G MacLachlan 55.58 4. M Wyley L McLay 53.85 E/W: 1. C & G Raisin 60.38 2. K & P Verhoek 56.35 3. L Vodanovich V Baillie 55.58 4. P Loader K McIlraith 55.19

Wednesday Senior/Junior: N/S: 1. M Dawson W Hodges 61.92 2. J Lupton J Dodds 57.35 3. D Johnson

R Sigley 56.82 4. C Winton L Vodanovich 55.39 E/W 1. E Topfer J Gillespie 66.61 2. L McLay J Coxon 51.66 3. R Terrey M Ewing 51.40 4. A Sutherland L Raine 51.26

Wednesday Social: 1. A Thirtle G MacLachlan 62.50 2. C Pepperell N Gale 59.52 3. B Collins D Price 57.41 4. J Compton-Schon M Hoek 52.38

Friday Social: N/S: 1. N Gale D Dodds 63.67 2. S Poff C Raisin 60.00 3. R Bowie D Price 57.38 4. V Baillie J Newman 54.74 5. C Brown J Scott 50.58 6. J Compton-Schon A Buckley 50.29 E/W: 1. B Collins J Hore 57.71 2. H Jarrett B Perkins 57.32 3. A Foley G MacLachlan 55.77 4. C Veltman C Killington 53.70 5. R Sigley M Wyley 53.49 6. A Thirtle S Benefield 52.06

Property Brokers

Whanganui 52 Ingestre Street

New Listing



Right size offices

This upstairs office space is well-presented and offers a very comfortable working environment. They form part of a larger building, located on a busy corner section, part of a key thoroughfare for traffic commuting around the city. The elevated height of the building gives great signage options to 2 Streets. If you are looking to treat yourself to an upgrade on your current offices, or maybe downsize your rent, then this may well be your best move.

For Lease \$16,502 pa + GST
View By appointment
Web pb.co.nz/WGC174802

Richard White
M 027 442 6171



Steve Boyd
 027 427 9084

NEW & USED MOTORCYCLE PARTS & SERVICE



KNOX

RED TORPEDO



UNIT GARAGE

47
 KEITH STREET
 WHANGANUI

WORLD BEE DAY

Monday
20 May

Why do we need bees to survive?

The simplest answer is that bees pollinate food crops. Pollination occurs when insects — like bees and other pollinators — travel from one plant to the next, fertilizing the plant. Bees have little hairs all over their body that attract pollen. When the pollen from a flower sticks to a bee, it then travels with the bee to its next destination. When a bee lands on the next plant or flower, the pollen is distributed which results in cross-pollination. This process is what later yields fruits, vegetables and seeds.

Bees are one of the world's most important pollinators for food crops — each day we rely on bees and other pollinators. In fact, out of every

three bites we consume relies on pollination.

But the value of bees goes beyond just supplying countless fruits and vegetables. Bees are also responsible for nuts, coffee and even spices.

Pollinators (including moths, flies, beetles, birds, bats and more) are also part of maintaining the lungs of our planet. Pollinators help the growth of many trees as well as other plants.

Nearly 90% of flowering plant species on the planet require pollinators to aid in reproduction. This not only provides a food system for wildlife, but it also creates shelter for animals.

There are over 20,000 bee species across the globe. One of the most notable bees is the honeybee.



The honeybee is responsible for nearly a third of crop pollination. But these hardworking insects produce more than that. They

have six hive products — pollen, honey, beeswax, royal jelly, propolis and venom. These are all collected and used for nutritional and medical purposes by humans.

Yet bee populations continue to decline due to the rampant use of pesticides and other environmental factors — like climate change. There is no way to overstate the importance of bees.

The wind does play a role in pollination, so we cannot overlook the fact that we would have some food to eat — just nothing that would be tasty to eat day in and day out. The wind is responsible for the pollination of corn and wheat. But the majority of our nutritious foods are bee-assisted. No almonds. No apples. No cherries. The list goes on and on. Humans would lose a healthy, vibrant diet.

Then what? It's possible that advancements in technology would find ways to pollinate by "hand" — or by drone — we really don't know what the future holds. But hand-pollinating is expensive. And those costs would be absorbed by consumers.

The decline of bees warn us that we are on a toxic track. The same pesticides that are killing bees threaten many other insects, which are the basis of our ecosystems. And these toxic chemicals contaminate the air and water. They even linger in soil for months or years, harming the vital soil communities we need to grow our food. If we step up to save the bees, it means that we'll be saving so many other creatures, too. Help produce 1/3 of our food supply.

In summary bees:

- Help provide 1/2 of the world's fibres, oils and other raw materials
- Help create many medicines
- Provide food for wildlife
- Help prevent soil erosion

Plants that bring all the bees to the yard

"One of the best things Kiwi bee lovers can do for our bees is to grow bee-friendly trees, wildflowers or shrubs in their gardens or public spaces. This provides essential nutrition for our bee population ensuring they can be resilient in the face of the many challenges they face," says Apiculture New Zealand chief executive Karin Kos.

Plants that flower in autumn and early spring are bee favourites as they supply nectar and pollen when little else is available.

NZ Trees for Bees Research Trust has produced guides on what to plant for bees (www.treesforbeesnz.org). Some favourites are: rosemary, oregano and thyme. Apples, pears and quince. Peonies, some camellias and magnolias.

"Trees for Bees has done extensive work on identifying the best plants for bees and has produced regional planting guides, individual profiles of star performing bee plants and advice on planting for home gardeners and rural property owners. They offer a wealth of knowledge to gardeners and bee lovers."

NZ flax (harakeke, korari

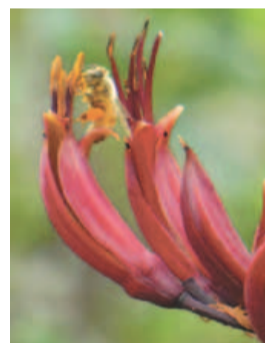


An apple blossom

and wharariki) produce pollen with the highest protein content of any plant studied. Cabbage trees, hebes and renga. Two species of lacebark (Hoheria populnea and H. sexstylosa). Five finger (whauwhaupaku). Bees also love weeds like clover and dandelions!

Some of the best bee-friendly trees are many citrus and pip fruit trees, or native plants like rewarewa. These offer bees excellent, ongoing sources of nutrition and well-nourished bees are

better able to withstand threats like varroa, habitat loss, climate change and diseases.



NZ flax in flower

WANGANUI FARM SUPPLIES

Suppliers of Liquid Sugar and Bee Hive Supplies



5-9 Church Place, Wanganui

06 345 4663

Manager

Scott Morpeth

027 233 4875

twecddale's Est. 1945



Steeped In The Values Of Hard Work,
And With A Deep Care For Nature.

WE STARTED WITH 300 HIVES ON A SMALL SECTION OF NATIVE BUSHLAND IN 1945 AND OVER 75 YEARS & FOUR GENERATIONS, WE HAVE GROWN TO BECOME ONE OF NZ'S LARGEST AND OLDEST FAMILY-OWNED HONEY PRODUCERS.



HARVESTED, PACKED, INDEPENDENTLY TESTED AND CERTIFIED IN NEW ZEALAND.

CONCHITA TWEEDDALE
PHONE: 06 388 1217
EMAIL: DC.TWEEDDALE@XTRA.CO.NZ
25 WHARUA ROAD, RD5, TAIHAPE 4795

SUPPLIER OF QUALITY BULK HONEY, PACKED HONEY, BEESWAX AND PROPOLIS
twecddaleshoney.co.nz



HOME MADE
**HONEY ICE CREAM &
HONEY PRODUCTS**

06 324 8224

Cnr State Highway 1
& Rongotea Road,
between Foxton & Sanson
wairekahoney.co.nz
info@wairekahoney.co.nz

Open 7 days till 5pm



WORLD BEE DAY

Monday 20 May

“Possibly the largest selection and variety of honey in the North Island”

ADVERTORIAL



Russell with a sample of his range of honey

St Johns Hill Honey has been built up over the past 5½ years to now stock, according to owner Russell Hayes, “Possibly the largest selection & variety of honey in the North Island.”

Russell had always been fascinated by bees, hives and honey and when he and Raewin came to Whanganui, he decided to pursue the honey business, initially just as a hobby, with most of his hives up Bushy Park way.

“However, the hives produced too much for us in the first year, so we gave a lot of it away. It happened again in the second year and so we started selling it. Since then demand has skyrocketed and we approached other artisan honey beekeepers to sell

their honey as well,” says Russell. They currently have over 50 different varieties of honey such as Instant Go’ particularly suitable for athletes, Asian Cooking Honey, Old English Style, Urban Gardens, Dark Chunky and Hokitika Gold. Most are sourced from artisan honey producers in Kapiti, Taranaki ranges and Taranaki but the rest can come from all over New Zealand.

Russell does a lot of blending but his own honey – named Kai Iwi Clover – is their top seller followed closely by Dandelion Honey.

The best approach is to come and see the range of honey at 2A St Leonard Street. Phone Russell on 027 4545 444.

Honey bee facts

- Worker bees produce about 1/12th of a teaspoon of honey in their lifetime.
- Bees have been producing honey for at least 150 million years.
- On one flight from the hive to collect honey, a honey bee will visit between 50 and 100 flowers.
- A bee must visit about 4 million flowers to produce 1kg of honey.
- Bees use their antennae to smell. They can detect nectar 2 km away.
- The honey bee is the only insect which produces food eaten by humans.
- A honey bee flies at approximately 24 kph.
- The honey bee beats its wings 11,400 times per minute, which is how they make their buzzing sound.

HONEY HONEY



ST JOHNS HILL HONEY
2A St Leonard Street, Whanganui
Phone 027 454 5444

Piano man performs Elton Extravaganza

Be prepared to be taken on an idyllic trip down the Yellow Brick Road because “The Elton John Experience”, starring talented performer Michael Stodart, is coming to town this Saturday, 18th May, at the Royal Whanganui Opera House.

The spectacular show features a torrent of hits to delight long-time Elton fans and newfound admirers alike.

Star of the show and accomplished piano man Michael Stodart was born and raised in Taihape. It's here that the musician said he learned to play the piano by copying his mother at just eight years old.

“Being a young pianist at the time, the only artist to latch onto was Elton John, after all, the songs are so brilliantly written and memorable that they have become a part of most people's lives over the past 50



Michael Stodart performing at Elton John this Saturday

years” Stodart said. The idea to produce the show, which solely paid tribute to one of the greatest music icons of the 20th century, came much later, when his sister was unable to get tickets to the Elton

John farewell concerts in 2019. Stodart suggested that his sister come to Hawke's Bay regardless as he could perform a set of Elton songs to soften the disappointment; this he de-

scribes as the shows light-bulb moment! See the No 1, Elton John tribute artist of Aotearoa when he graces the boards of the Royal Whanganui Opera House this Saturday, 18th May.

Whanganui Volunteer Fire Brigade team ready to do the Sky Tower Stair Challenge

The annual Firefighter Sky Tower Stair Challenge is on Saturday, 18 May, and the Whanganui Volunteer Fire Brigade will have a team participating. They will be joined by Aaron Wales from Suzuki Whanganui, who will be part of Squad 51, which is reserved for celebrities and charity partners. Suzuki NZ has been long-term supporters of Leukaemia and Blood Cancer NZ (LBC-NZ), the charity which benefits from the fundraising, which all teams undertake. This year is also the 20th Anniversary of the event.

The Whanganui Volunteer Fire Brigade's team consists of Rural Fire Fighters Aaron Whitford (Team Captain), Triona Cooney – third climb, and Jordan Conibear – first climb. This is Aaron's tenth year, after first doing the climb as a 17-year-old in 2010. This year the Whanganui VFB team has raised \$5100.

Aaron explains why he does the stairs: “I personally do the climb as I have lost family members to cancer and other illnesses, particularly my dad who passed away in 2010, and my uncle, Kelvin Lehmstedt, who passed away late last year. He was one of my main inspirations to become a Fire Fighter after spending some of his early life as a RNZAF Fire Fighter at Ohakea.”

Also participating in the climb is Qualified Fire Fighter Kat Penny-Baker from the Bulls Volunteer Fire Brigade. Kat also works at the Whanganui Fire Station as a Business Services Coordinator.

Aaron explains, “The quickest ascent is about ten minutes with the slowest about an hour.

Not everyone makes it.” He has done it in within 30 to 40 minutes.” What makes it that much harder is that the firefighters wear full fire gear, which weighs about 25kgs. The volunteers have been training by themselves as all have work to do first. A favourite ‘run’ has been up the Durie Hill steps.

The event will take much of the day as there are over 1000 participants. Aaron adds, “To access our official fundraising pages, you can visit firefighterschallenge.org.nz, then scroll down the page until you find the search bar it allows you to search by crew or participant. Our Team names

are Whanganui Volunteer Fire Brigade, Bulls Volunteer Fire Brigade and Aaron Wales.” For those interested in learning more about the event itself, you can visit <https://firefighterschallenge.org.nz/about> The event will be streamed on YouTube on Saturday, 18 May.



Aaron Wales, Jordon, Triona, Kat and Aaron Whitford

Earl Bamber unscathed after dramatic crash

Earl Bamber was involved in a dramatic crash on Sunday at the Spa Six race in Belgium. Earl was born in Whanganui and was brought up on a farm near Jerusalem before attending Whanganui Collegiate School.

He clipped Sean Geael's BMW, four hours into the race, and spun into the inner wall of the circuit and then being lifted up in the air as he came back across the track.

Fortunately, he could be heard on the radio saying, “I'm fine. I'm fine”, and his team later announced that he “had been cleared and released by medical



Earl Bamber crash last Sunday

staff.” The race was stopped for two hours before resuming. Earl is a two-time winner of the 24 Hours of Le Mans, having won in 2015 alongside Nico Hulkenberg and Nick Tandy and in 2017 with Timo Bernhard and Brendon Hartley, a fellow New Zealander, born in Palmerston North. He also became overall champion of the 2017 FIA

World Endurance Championship alongside Timo and Brendon. Earl also won the IMSA Sports Car Championship in the GTLM class in 2019, as well as the Nürburgring 24 Hours in 2023. Prior to his endurance racing career, he was champion of the 2014 Porsche Supercup and won the Porsche Carrera Cup Asia twice in 2013 and 2014.

New archery club to open in Marton

Former Whanganui swimmer, Kane Follows, to represent NZ in Olympics



Students have a go at archery

Due to the increased popularity of Archery in Wanganui and surrounding districts, Rob and Maureen McMillan are opening up a new Archery Club in Marton. This will mean there are three clubs under their leadership with the Marton, Marangai and the Central North Island Club, all being looked after by the McMillan's. Preparations are already underway for the new club; new bows, arrows and accessories are arriving soon. Rob and Maureen are encouraged by the interest and support for

the new archery club already. "The Rangitikei School students are making the new frames for us, which is a blessing and a project the college can do. We are very grateful for what they are doing so this new club goes ahead," Rob McMillan explained. Plans are in place to open the new club soon; with a target of opening at the beginning of next term's school holidays. The Marton club, like the local Marangai Club in Whanganui, will cater for schools, groups, birthday parties, corporate do's and for the

general public over the age of six years old to the elderly. If you would like to be part of a happy and relaxed Archery Club, you can contact Maureen on 0272163741 and book in for archery lessons with all equipment supplied. The Marton Club will be held on Saturdays 10.00am to 12.00pm for beginners, and 1.00pm to 3.30pm for all archery members. The Marangai Archery Club will continue to run as it has been with approximately 80 members continuing to come to the club at Kaierau.

A retired Whanganui couple, Peter and Pat Follows, will be taking a special interest in the Olympics later this year.

Their grandson Kane Follows will be representing New Zealand in swimming in Paris.

Kane, 27 this month, will be swimming in the 200m backstroke at the Games, which will run from July 26 to August 11.

He qualified for the event at Olympic trials at Hastings last month.

Kane's father, Darryl, confirmed that selection for Kane for the Olympics had been a long term ambition for his son.

Kane achieved his goal despite Covid interfering with his plans, as it did for so many other athletes.

It is no surprise that Kane has a preference as a swimmer for backstroke. Dad Darryl was a prominent swimmer in Whanganui before moving north.

Subsequently, back in Whanganui for the Masters Games some years ago, Darryl broke the world Masters age group record for the 200m backstroke, Kane's event at the Olympics.

At the age of 27 Kane might be considered a late-



Kane Follows (with arm raised). Photo credit: BW Media

comer to competing at the highest level in swimming.

Darryl said he and his wife, Michelle, had taken the view that Kane should not be pushed in a particular sporting direction as a youngster.

"We let him develop at his own pace," Darryl said. "As well as swimming he played rugby and basketball."

After making his decision to concentrate on swimming, Kane won a scholarship to the University of Hawaii, based in Honolulu. He was there from 2017 to May 2020, when he graduated.

In 2019 he distinguished himself in the massive United States sports system. At NCAA championships, he made the final for the fastest eight in the 200m backstroke, a feat which won him All-American status.

The Covid outbreak led Kane to return to New Zealand, where he moved from Auckland to Dunedin to further his swimming career.

Asked to nominate the qualities which had made his son an Olympic athlete, Darryl said Kane was disciplined, had a good work ethic and was coachable. His personality led to him achieving tasks.

Darryl said of Kane's training sessions that his son swam from Monday to Saturday and that, on four of those days, there would be double swim sessions as well as gym workouts.

Golf results

Wanganui Golf Club - Thursday, 9th May.

J Kay 39 pts, S Schrider 38, D Goodgame 37, D Spencer 37, M Stanford 36, H Davies 36, C Feaver 36, N Hooker 35, H Carvell 35, A Mangan 34, J Spooner 34, W Jordan 33, B Brown-Sharp 33. **Two's:** W Costello, J Spooner, S Schrider. **1st closest marker Feaver ball:** B White, **3rd longest putt Riverland Family Park voucher:** C Feaver, **14th closest to pin First Vets ball:** J Kay, **18th longest putt Canaan Honey voucher:** B Patrick.

Bowls results

WANGANUI BOWLING CLUB INC

Results from the Winter Programme - Tuesday, 14 May 2024

DRAWN PAIRS: SPONSOR: Jane Winstone Retirement Village - 1st Jim Pullins and Ian Hadfield; 2nd Bruce Roberts and Robert Hackbarth; 3rd Ross Nichols and Shirley Bird. Thank you all for your participation.

WANGANUI EAST BOWLS

Head Ch Mixed Pairs: 1st P Clark, D Martin **Colts Singles:** 1st N Ross; 2nd P O'Shaughnessy **Hoskin Drawn Triples:** 1st R Nielson, D Rattray, A Campbell **Pye Drawn Triples:** 1st. B Gadsby, U Barton, J Stewart; 2nd S Wooding, T Ward, W Carey

Results of first of six winter rowing series

Forty-three rowing, waka ama and kayak crews took to the Whanganui River, Sunday 12 May, for the first of six 2024 Blinkhorne and Carroll Winter Series six kilometre prognostic races.

The races are run by Gus Scott on behalf of the Whanganui Rowing Association, with entries received by 12pm the day prior to each event, via an excel sheet, where clubs and individuals can select

the category appropriate to their boat type, age, gender and grade.

Gus then works out the 'prognostic' of each crew, whereby the slowest boats go first, and the fastest boats last, over an out and

back 6 km race, so faster crews catch up to slower and smaller crews, for an exciting finish. The 'prognostic percentage' calculates the winner as the highest percentage based on 100% for each boat type, grade, age and gender.

The winning crew with an 80.42% and a time of 23 minutes, 15 seconds was an Aramoho-Whanganui Rowing Club and Whanganui Collegiate School Men's Club Quad combination of Toby Corcoran, Eli Kuehne, William Herd and Bryn Morgan, followed by Wellington Rowing Club's Jason Theobald in a Men's Intermediate

Single with 80.22% and Union Boat Club's Bruce Tate in a Men's Master G Single, in 80.03%.

All these crews won cash prizes, with great spot cash prizes offered, but 50% of the crew must turn up to prizegiving.

The second race of the series will be held at 9.30am on Sunday, 9 June, starting by the National Library Building area of the river (by Treadwell Gordon), going upstream under two bridges and turning at Cafra Avenue, finishing by the Railway Bridge. Enquiries and entries (due 12pm 8 June) to email: whanganuirowing@gmail.com





OVER 15 EVENTS TO EXPLORE AI, GET HANDS ON WITH TECH, EXPERT PANELS, NETWORK EVENTS AND LEARN NEW SKILLS

techweek.co.nz/whanganui

Two Techweek panel discussions on Monday

Under the category of 'Deep Dive with the Experts' there are two digital panel discussions on the first day of Techweek – Monday 20 May – and they are free

to attend. The first is Digital Safety Panel from 12 noon to 1.30pm and the second is a panel discussing Indigenous Data Sovereignty, which is from 5.30

to 7pm. Both will be held in The Watering Hole of the Backhouse, 12 Drews Ave/28 Taupo Quay
1. Digital Safety: 12pm to 1.30pm. Lunch from Safer Whanganui.

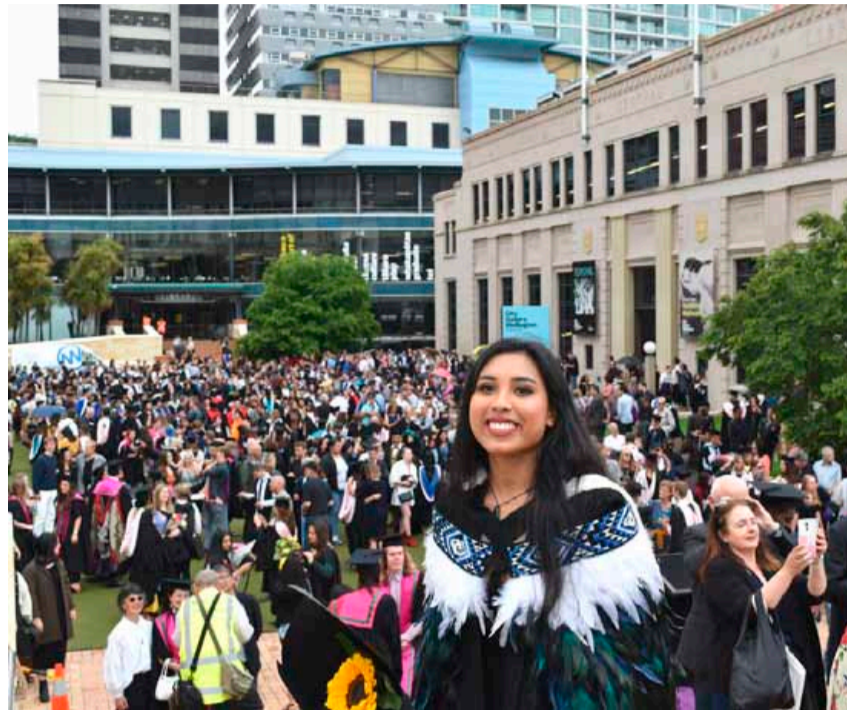
Panel participants are: Aleisha Amohia [Te Ātihaunui-a-Pāpāurangi, Cambodia, India], Alison Mau, Amokura Panoho [Kura Consulting, Net-safe, Te AorereKura] and representatives from the Classification Office. There will be a focus on the experiences of women and marginalised groups.

The conversation will cover:
1. Advocacy for Survivors: Alison Mau's work with Tika's PledgeMe campaign would be a focal point, discussing how technology can be leveraged to support survivors of sexual harm and hold perpetrators accountable.

2. Te Mana Whakaatu, the Classification Office, will present key findings from their latest research on online misogyny and violent extremism and how this contributes to making online spaces less safe for women and girls.

3. Intersections: Amokura Panoho will introduce the intersections of online safety/wahine Māori and online safety/sexual violence.

4. Digital Inclusion and Empowerment: Led by Aleisha Amohia
2. Data Sovereignty:



Aleisha Amohia

5.30pm to 7pm
This event will delve into the complexities of data governance, ownership, and control as they relate to indigenous communities.

The Panelists will be:
Aleisha Amohia (Te Ātihaunui-a-Pāpāurangi, Cambodia, India)
Aleisha Amohia is a technical lead and software developer who

advocates for the importance of data sovereignty, with a specific interest in Māori data sovereignty.

Chris Cormack (Kāi Tahu, Kāti Māmoe, Waitaha)
Chris Cormack has a background that intersects technology and the rights of tāngata whenua.
Topics of Discussion:
- The definition and importance of Indigenous

Data Sovereignty.
- The role of technology and the technology sector in empowering Indigenous communities to have sovereignty over their data.

- Challenges and solutions in the implementation of data sovereignty principles.
- Case studies and success stories from around the world.

Gonville Library holding a Tech Day on May 23



Gonville Library, opposite Gonville Shopping Centre

The Gonville library is thinking big and is in full support of Tech Week 2024 with a full day of technology on offer (lunch included).

Techweek is a nationwide awareness week and takes place between 20 and 26 May. The week-long Festival started in 2012 but only became a nationwide event in 2017 and it offers a wide variety of events across New Zealand.

As Gonville Library manager Kat explains: "Technology is a fast-paced and ever-changing world, and with the arrival of Artificial Intelligence (AI), things seemed to have gone up a notch. It has always been a big part of modern-day life, helping and supporting tasks in business practice, education, communication, the medical world and at home. It has become so vital in our everyday lives that we can't be without it anymore."

"However," Kat continues, "not everyone is an early adopter and for the past years, Rachel Smith, our Learning and Discovery Librarian, has run technology programmes for seniors like Appy Seniors or Better Digital Futures for Seniors (all in cooperation with Digital Inclusion Alliance Aotearoa)."

From this idea Kat and Rachel de-

veloped the plan to organise a full Tech Day – open to all but with a focus on the older adult. The day will start with an introduction to the Nymbly App – a digital health programme, especially developed to improve and maintain balance and mobility.

"Kat explains the remainder of the day's programme, saying, "We then move on to the online library resources and talk about Libby, Press Reader, Movies and Music and LinkedIn Learning. The library will provide lunch, and then we get stuck back into it with a presentation on Dall-E, a free AI image generator. No doubt that this presentation will raise quite a few questions, so we'll end the day with a round-table discussion on all things technology but in particular Artificial Intelligence."

Kat is looking forward to a fun and interactive jam-packed day. This event is completely free, registration only, with lunch available for registered attendees and will be in the Gonville Library between 9.30am and 2.30pm on Thursday, 23rd of May.

Please register your attendance with Kat at kat@whanganuilibrary.com or phone the Gonville Library at 06 344 5872.

TECHNOMAN
COMPUTER REPAIRS
SERVICING & SALES
WHANGANUI EAST SHOPPING CENTRE // 06 343 8144
WWW.TECHNOMAN.CO.NZ

techweek 2024
Whanganui
MAY
20-26
at THE BACKHOUSE
28 Taupo Quay
WHANGANUI
OVER 15 EVENTS TO EXPLORE AI, GET HANDS ON WITH TECH, EXPERT PANELS, NETWORK EVENTS AND LEARN NEW SKILLS
techweek.co.nz/whanganui



Jumbo crossword

ACROSS

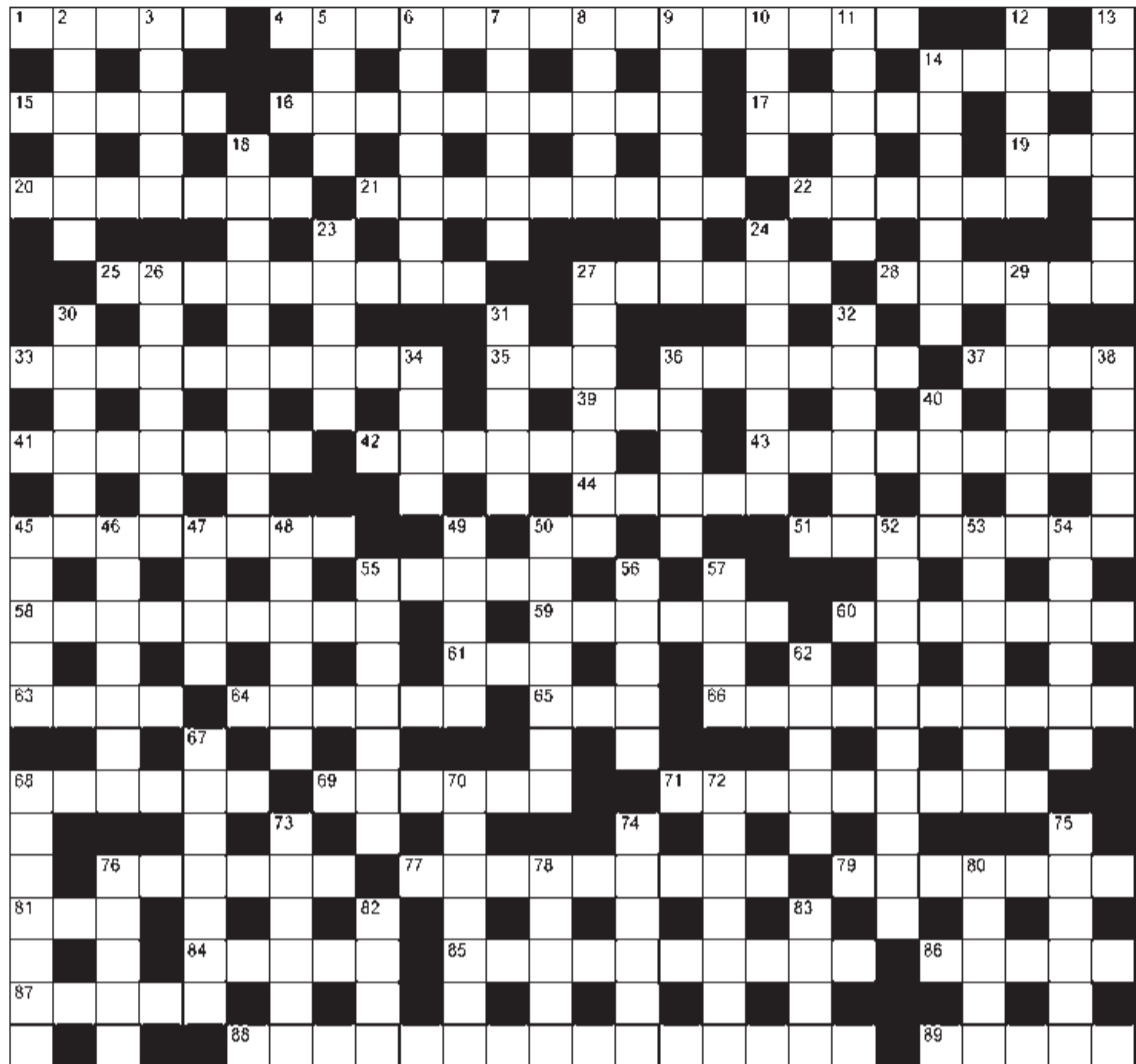
- 1 Entice (5)
- 4 Intelligently alert and lively (6,2,1,6)
- 14 Sufficient (5)
- 15 Foot lever (5)
- 16 Television or radio advertisement (10)
- 17 Winning (5)
- 19 Pair (3)
- 20 Down-payment (7)
- 21 Political party's declaration of policy (9)
- 22 Cooking instructions (6)
- 25 Instant (9)
- 27 Boredom (6)
- 28 Stand up for (6)
- 33 Windy and indirect (10)
- 35 Australian bird (3)
- 36 Fermented fodder (6)
- 37 Window ledge (4)
- 39 Bite (3)
- 41 Evolve (7)
- 42 Yacht harbour (6)
- 43 Light social conversation (5,4)
- 44 Looks after (5)
- 45 Meant (8)
- 50 Friendly greeting (2)
- 51 Running race (8)
- 55 Hawaiian greeting (5)
- 58 Talked into (9)
- 59 Spoiled (6)
- 60 In sight (7)
- 61 Spinning toy (3)
- 63 Road division (4)
- 64 Clan (6)

- 65 Queer (3)
- 66 Ill luck (10)
- 68 Vital gas (6)
- 69 Cleric (6)
- 71 Payments to shareholders (9)
- 76 Meat pin (6)
- 77 Trial model (9)
- 79 Depict (7)
- 81 Slippery fish (3)
- 84 Of the sun (5)
- 85 Oral examinations for job applicants (10)
- 86 Ape (5)
- 87 Task (5)
- 88 Nothing at all (5,5,5)
- 89 Prepared (5)

DOWN

- 2 Cricket team (6)
- 3 Keyboard instrument (5)
- 5 Mob violence (4)
- 6 Athlete on bars, beam, vaulting horse, etc (7)
- 7 Creamy-white root vegetable (6)
- 8 Confiscate (5)
- 9 Be dealt (anag)(7)
- 10 Rip (4)
- 11 Unlocked (6)
- 12 Digging tool (5)
- 13 Loyal (7)
- 14 Fan (7)
- 18 Probability of a specified outcome (10)
- 23 Flier (5)
- 24 Sword (7)
- 26 Broad-bladed large knife (7)

- 27 Huge long sea wave (7)
- 29 Tomb inscription (7)
- 30 Homing bird (6)
- 31 Lukewarm (5)
- 32 Large tropical lizard (6)
- 34 Minor quarrel (4)
- 36 Backbone (5)
- 38 Compare (5)
- 40 Begging request (4)
- 45 Drive forward (5)
- 46 Despotism (7)
- 47 Common sense (4)
- 48 Cause to be loved (6)
- 49 Swag (5)
- 50 Spear (7)
- 52 Large horned animal (10)
- 53 Polluted (7)
- 54 Rectangular (6)
- 55 Looked up to (7)
- 56 Dizzy (5)
- 57 Girder (4)
- 62 Meat jelly (5)
- 67 Back (7)
- 68 Crime (7)
- 70 Welsh city (7)
- 72 Suggested indirectly (7)
- 73 Roar (6)
- 74 Tempestuous (6)
- 75 Diverse (6)
- 76 Sailing vessel (5)
- 78 Giant (5)
- 80 Garden string (5)
- 82 Accurate (4)
- 83 Move through water (4)



We do the *home* work for you.

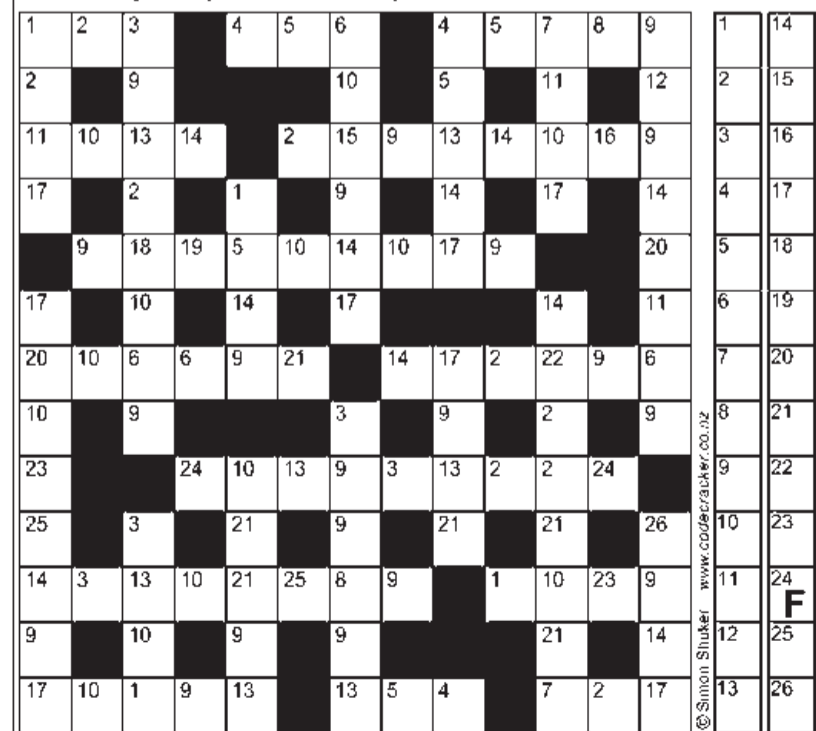
Ngairé Eyers Simms M 021 033 7711 P 06 349 0883
Hans Vanderschantz M 027 245 3532 P 06 349 0883

Harcourts Whanganui Licensed Agent REAA 2008

Harcourts

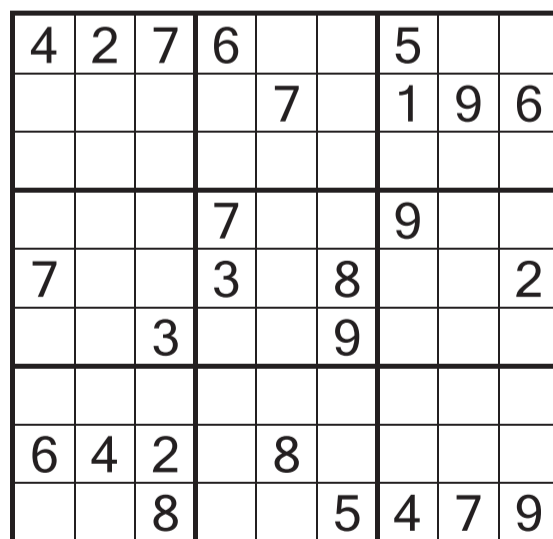
SIMON SHUKER'S CODE-CRACKER Extra 809

EACH number in our Code-Cracker grid represents a different letter of the alphabet. For example, today 24 represents F, so fill in F every time the figure 24 appears. You have one letter in the control grid to start you off. Enter it in the appropriate squares in the main grid and solve the starter word. Fill in other squares in the main and control grids with the found letters and look for the next word. Follow the word trail through the puzzle to its completion. www.codecracker.co.nz



A B C D E F G H I J K L M N O P Q R S T U V W X Y Z

Sudoku



MEDIUM

Previous solution

7	8	4	1	9	6	5	3	2
3	9	5	8	2	7	6	4	1
2	6	1	4	5	3	9	7	8
4	2	9	7	1	5	8	6	3
5	3	8	9	6	4	2	1	7
1	7	6	2	3	8	4	5	9
6	4	7	3	8	9	1	2	5
8	1	3	5	4	2	7	9	6
9	5	2	6	7	1	3	8	4

Fill the grid so that every column, every row and every 3x3 box contains the digits 1 to 9.

Previous solution

1	S	2	Z	3	F	4	A	5	T	6	O	7	V	8	I	9	N	10	R	11	E	12	C	13	U
14	G	15	B	16	Y	17	P	18	L	19	W	20	X	21	Q	22	M	23	J	24	K	25	D	26	H

Previous crossword solution

ACROSS: 1 Dice with death, 8 Advise, 14 Probe, 15 Bassinet, 16 Examine, 17 Craze, 18 Set, 19 Missile, 21 Dirt cheap, 22 Puppet, 25 Resolution, 27 Mastered, 28 Result, 31 Skates, 33 Essence, 34 Tutors, 35 Bias, 37 Ivy, 39 Halo, 40 Amateur, 41 Uppermost, 42 Suggest, 43 Nickname, 48 Cyclamen, 52 Glimpse, 56 Perimeter, 57 Javelin, 58 Rate, 59 Hue, 60 Look, 61 Mozart, 62 Decorum, 63 Reheat, 65 Casual, 66 Welcomes, 68 Battle plan, 71 Gender, 72 Front line, 74 Portico, 76 Cur, 79 Suede, 80 Antenna, 81 Hogmanay, 83 Sleet, 84 Prison, 85 Poetic justice.
DOWN: 2 Imagine, 3 Eases, 4 Inn, 5 Hats, 6 Eyewitnesses, 7 Toast, 8 Average, 9 Vice, 10 Statue, 11 Moist, 12 Sextant, 13 Sightseeing, 14 Perplex, 20 Louisiana, 23 Liberate, 24 Left out, 26 Outlook, 27 Miners, 29 Uniform, 30 Trophy, 32 Khaki, 34 Tyres, 36 Satin, 38 Oral, 43 Nepal, 44 Curious, 45 Numb, 46 Mutton, 47 Bight, 48 Calamity, 49 Contralto, 50 Airship, 51 Extra, 52 Greased, 53 Predominate, 54 Ejects, 55 Overabundant, 64 Earnest, 65 Concise, 67 Certain, 69 Archaic, 70 Veneer, 71 Green, 73 Lingo, 75 Trait, 77 Less, 78 Chic, 82 Gnu.

5x5

S		A		S
	U		I	
A		O		E
	A		A	
K		E		L

Insert the missing letters to complete ten words — five across the grid and five down. More than one solution may be possible.

S	C	A	T	S
T	O	N	A	L
A	R	O	M	A
F	A	D	E	S
F	L	E	S	H

Previous solution

All puzzles © The Puzzle Company
www.thepuzzlecompany.co.nz

- Final call for entries in June Art Auction -

Following a number of successful art sales, Heritage Art Auctions is now accepting entries for its next online art sale at the end of June. The 'timed' art auction

runs for ten days from Thursday June 27th, until Sunday, July 6th. As usual, bidders will come from across New Zealand and overseas. Virtually all lots in this auction are being offered

for the first time, and in many cases never been seen at auction before. One of the highlights of this sale is a fine oil painting of a Māori Chief by Vera Cummings (1891-1949),

generally regarded as the best pupil of Charles F. Goldie. She is sometimes referred to as 'the poor man's Goldie' only in the sense that her paintings tend to sell in the \$10,000-\$15,000 range versus \$1,000,000-\$1,500,000 for a quality Goldie.

Colonial artist Harry W. Kirkwood (1854-1925) . This painting sold to a local purchaser for \$8625.

Heritage Art is accepting paintings, watercolours, original prints and photos. Entries should be received no later than Wednesday, May 29th to enable photography on June 1. For persons with sizeable collections or valuable works in and around Whanganui, Managing Director Henry Newrick can make home visits. In other instances, entries can be brought to the office by appointment (Tel. 027 471 2242), at Heritage House, 136 St Hill Street. Minimum values should be at least \$100. The picture shows the Kirkwood painting which fetched \$8,625 at the last sale, which concluded April 7th.



WHAT'S ON IN THE COMMUNITY

Alcoholics Anonymous
Phone 0800 229 6757. If you have a drinking problem maybe we can help. AA Wanganui area meeting list: Sunday, St Johns Lutheran Church Hall, 51 Liverpool Street, Wanganui, 9am; Monday, Friendship Hall, Morris Street, Marton, 7.30pm; Tuesday, St Johns Lutheran Church Hall, 51 Liverpool Street, Wanganui, 12.30pm; Wednesday, St Luke's Church Hall, 34 Manuka Street, Castlecliff, 7.30pm; Al-Anon (family support) Fridays, Gonville Library meeting room, 12.30pm. Ph 0508 425 266.

Amitabha Buddhist Centre
The Amitabha Buddhist Centre invites you to a half-day course entitled "Learn to Meditate" on Sunday 19th May from 10am to 1pm at the Community Arts Centre, 19 Taupō Quay, Whanganui, with Kadam Birgit Saunders. The cost is \$30/\$15 (unwaged). This includes morning tea. No cushions or blankets are required unless preferred to chairs. Please use the Riverside entrance. Please book at www.meditateinpalmerstonnorth.org

Do You Have Questions About the Bible?
Come and join us at the Christadelphian Hall on Tuesday night at 7:30pm for Bible-based discussion and a cup of tea. All are most welcome. 138 Great North Road. Email: wanganui.ecclesia@outlook.co.nz / www.thisisyourbible.com

Engaged Daily Mindfulness
Our Buddhist practice group in the Thich Nhat Hanh tradition meets regularly. We support each other in developing actions of body, speech and mind to create a more healthy, ethical and compassionate world. This is open to all. Contact Clare on 021-0622-120 www.plumvillage.org

ESOL Home Tutors
Are you interested in other cultures and helping new migrants and are you keen to teach English as a volunteer tutor? English Language Partners Whanganui is running a free volunteer ESOL Home Tutor Training course on Monday and Wednesday afternoons, beginning on Wednesday 5th June from 1.00pm to 4.00pm and running until 1st July. Text Jane for details on 027-257-7776 or email whanganui@englishlanguage.org.nz

Friends of the Whanganui River Inc.
Annual General Meeting, Saturday, 18th of May, 2024 at 2.00pm. St Paul's Presbyterian Church, Brechin Lounge, 112 Guyton Street. Guest speaker, Sandy Woodhead – Operational Manager, DOC. Followed by afternoon tea.

MIST Mental illness Survivors Team
203 Victoria Ave, open 9.30am to 3.30pm Monday to Friday. Closed statutory holidays. A place to share activities and socialise. We offer activities, acceptance and support.

Print, Paint and Pottery
Featuring: printmaking and paintings by Jan Pickett, pottery by Samantha White and Maria Monrad. 1pm, 17 May - 26 May, 19 Taupō Quay, Back Gallery.

Theosophy Whanganui
Usually held 2nd Sunday Monthly. Where: Community Arts Centre, back river entrance in the Awa Room. When: 2pm What: Presentation with respectful discussion and communication. Purpose: No dogma, 'Do no harm', explore ancient wisdom to develop self with the universe. Email: theosophywhanganui@gmail.com

Whanganui Film Society
Monday 20 May 7pm: The Long Farewell (Kira Muratova | USSR (Ukraine) | 1971 | PG) A rift grows between a single mother and her resentful teenage son, who wants to live with his father. Another long-banned major work from Ukrainian auteur. Davis Theatre, Watt St. Members only. Join at nzfilmsociety.org.nz/whanganui/html

Wanganui Spiritual & Awareness Centre
Meetings 7pm Sundays, Quaker Meeting Rooms, 256 Wicksteed St. Local or visiting speakers or mediums sharing their spiritual gifts. Join our healing circle, take a raffle, stay for supper and chat. Everyone is welcome. Koha appreciated. See our Facebook page for details. Ph: 027-697-6308.

What's On Notices
What's On in the Community notices are \$10 for up to 50 words. Contact River City Press, 52 Ingestre St, by Tuesday 1pm to place your advertisement.



Also, currently in the upcoming sale are two very attractive works by Sydney Thompson and Margaret Stoddart.

The star item to sell in Heritage Art's last auction was a major work by the well-known colonial artist Harry W. Kirkwood (1854-1925). The painting was of Great Barrier Island and was the second largest work by Kirkwood ever to have been sold at auction. It fetched \$8,625 and now hangs at the Bushy Park Homestead, where it can be seen and admired by visitors.

For its June sale,

Recent Bereavements

Sadly passed away recently...

- Colin Ross BENBROOK**, on 6 May 2024, aged 90 years.
- Ngairé Idrean (nee Podjursky) GIRVEN**, on 26 April 2024, aged 62 years.
- Raapoti iti fare arii i te HAMEMEA**, on 7 May 2024, aged 74 years.
- Betty Emily HEAD**, on 8 May, 2024, aged 95 years.
- Josh Ross HOULAHAN**, on 11 May 2024, aged 24 years.
- Charles Louis (Charlie) HYLTON**, on 7 May 2024, aged 89 years.
- Leonard Percival (Len) (Penny) HYLTON**, on 30 April 2024, aged 95 years.
- Audrey Lilian (nee Haynes) MacPHERSON**, on 7 May 2024, aged 80 years.
- Betty Rose (nee Christieson) MURPHY**, on 9 May 2024, aged 82 years.

Copyright:
River City Press produces and/or publishes advertisements strictly on the basis that River City Press is entitled to and owns the copyright in the advertisement so far as the copyright relates to publication or reproduction for publication in any newspaper, magazine or similar periodical or to broadcasting of the advertisement.

DEMPSEY & FORREST
FUNERAL DIRECTORS

Arrange a visit today and meet our friendly team. We are here to help you in your time of need. 208 Guyton St Phone 06 349 0202 any time www.dempseyandforrest.co.nz

Anderson Memorials
Your loving memories set in stone ← 110 YEARS 1914-2024 →

HEADSTONES
Family owned for since 1914

For all monumental work in all cemeteries. Check out our website below

462 Somme Parade, Whanganui - opposite the cemetery Tel (06) 343 8708, Email: info@anderson-memorials.co.nz
Showrooms in Feilding & Palmerston North
www.anderson-memorials.co.nz

Cleveland Funeral Home
(06) 345 5522

Pre-Planning Call or Visit For Your Free Pre-Planning Pack.

179 Ingestre Street | clevelandfunerals.co.nz

JAMIE'S ANGELS
THE ESSENTIAL MEAL SERVICE

Delicious meals on a plate delivered daily

Stay Well - Eat Well - Stay Local - Eat Local

Our list is now open to new Gold Card/Senior clients

Call today on 0800 526 435 and find out how to become an Angel's client

Email: jamiesangelsnz@gmail.com or go to: jamiesangels.co.nz

CLASSIFIEDS

Professor Mazin Qumsiyeh from Bethlehem University speaking in Whanganui



Professor Mazin Qumsiyeh

Professor Mazin Qumsiyeh is founder and volunteer director of the Palestine Institute for Biodiversity and Sustainability (PIBS) at Bethlehem University, in the Palestinian territory of the West Bank. He has previously served at US universities including Tennessee, Duke and Yale.

As part of a tour of Australia and New Zealand, Professor Mazin will be in Whanganui on Saturday 25 May and will be having a morning tea chat and two public lectures.

Professor Mazin has published over 180 scientific papers, over 30 book chapters, hundreds of articles, and several books on topics ranging from environmental impact of colonization to environmental and climate justice to cultural heritage to human rights to biodiversity conservation to cancer. Among his awards is the Takreem award, peace seeker of the year award.

He is a Christian and has spoken at Archbishop Desmond Tutu's church in South Africa, as well as a speaker at the annual Unitarian conference in New Orleans in 2017.

* Morning tea 11am in the Christ Church Community Centre Upper Lounge at 243 Wicksteed St. This is an opportunity to meet him over morning tea. As Professor Mazin is also the president of the Rotary Club of Bethlehem this should appeal especially to all Rotarians, as he will chat about the innovative actions of the Rotary Club in Bethlehem.

For more information, email Craig Harris: charrisnz24@gmail.com.

His two public lectures will be:

- Christians in the Holy Land – Why Christians should care about what is happening in the birthplace of Jesus.

2:30pm – coffee and refreshments from 2pm.

Venue – Christ Church Community Centre Upper Lounge, 243 Wicksteed St

- Water, Fossil Fuels, Habitat and Sustainability in Palestine

7:30 pm

Venue: Davis Lecture Theatre, Whanganui Regional Museum

River City Press

- Positive news stories and advertising welcomed
Email: rivercitypress@xtra.co.nz

WEBSITE DESIGN

GET a stunning, contemporary website at minimum cost, or give your old one a strategic revamp. Phone Peter on 020-4161-3506 or email peter@toucan.media.

Spoilt

Nail & Beauty Salon

2 Glycolic Face Peels	\$80
Dermaplaning Facial	\$39
Brow Shape	\$10
Eyelash Tint, Brow Tint & Shape	\$28

174 Victoria Ave, Whanganui
Bookings ph 347 8092 or txt 022 0533 165

Find us on Facebook

FOR SALE

BLINDS - Roller & Venetians to order. Free measure and quote. Strath Davis Furniture & Flooring, Ph (06) 345-0883. **NEW** books available at River City Press, 52 Ingestre St. "From the Sea to the Mountain"; "Whimsical Tales of Old Wanganui"; "More Whimsical Tales of Old Wanganui"; "My Life - Annasophia". **TOP-VALUE** great range of \$6.00 native plants and grasses including Black Mondo, looking superb for landscaping now. Two varieties of Nandina; Domestica and Gulf Stream, both low maintenance and colourful. Parnells Quality Tree and Shrub Nursery, 102 Fox Road, Springvale, Wanganui. Phone 344-6645, well worth an inspection, with competitive prices and sound advice. Est. 1895.

GARAGE SALE

GARAGE SALE
SPRINGVALE
8.00am to 2pm
Sat. and Sun., 18 & 19 May
56 Somerset Road
Clothes, shoes, household goods and all sorts.

LAWNMOWING + GARDENING

LAWNMOWING, section tidy ups, pruning, WINZ quotes. Tel-Tx 06-344-2535/ 021-0899-2345.

AFFORDABLE LAWMOWING

Great quality service, great price. Pensioner rates available. Call Paul on **021 245 4999**

WORK WANTED

HOME maintenance and shifting. House clean-up, gardening, water-blasting, spout cleaning, de-cluttering. Ph Ray 027-2807015.
MOBILITY scooters. Sales, service, repair, rental wheelchairs, walkers, ramps. Call Graeme 021-1195118 or (06) 347-6927.
PAINTER and Plasterer, professional, efficient and experienced. No job is too small. Reference available. Call or text 022-035-0175.

CHIMNEY NEED SWEEPING?

Chim Chim Cheree
CHIMNEY SWEEP
Over 35 Years Experience
Parts & repairs our speciality
TAKING BOOKINGS NOW FOR JUNE/JULY

Phone **027 555 3074**

SPRINGVALE PROPERTY MAINTENANCE

NO JOB TOO SMALL Interior / Exterior
Call Darren on **028 468 9753**

REAL ESTATE

Time to Sell?

- FREE market appraisal
- FREE marketing package
- No up front costs

Effective, Efficient Marketing of your property = **SOLD**

Call Marion Farr today to discuss your real estate needs.
Email: marionfarr@xtra.co.nz



Licensed under the Real Estate Act 2008

Please call **Marion Farr** on **021 572 033**



HEALTH & BEAUTY

JADE Traditional Thai Massage. Excellent massage at reasonable prices. 64 Guyton Street. Phone 348-8466 for an appointment.

JAX ensomme Qualified stylists offering professional hair-dressing and gold card services. Book online or call (06) 343-1225.

JAX & Menz cut and style. Appointments not always necessary but bookings are available with our qualified team Uriah, Loren and Justine. Gold Card welcome. 51a Ridgway Street. Open 6 days, late night Wednesday. (06) 4372-908008

ACCOMMODATION WANTED

OLDER woman urgently requires two bedroom unit close to town. Careful tenant. 021-143-6887.

DOG WALKING SERVICE

DO you wish you could give your dog the exercise they need, without having to walk them yourself?
Call/txt 022-010-3577.

River City Press
Locally owned
email: rivercitypress@xtra.co.nz

RELIGIOUS SERVICES

UNITED SOVEREIGNS CHURCH

corner Puriri and Harper Streets
SUNDAYS, 5pm to 6pm

United Sovereigns preach end times Revelation.

We preach truth and our obligation to God in these end times.

Everyone welcome.

ACADEMIC TUTORING

NEED help with Chemistry, Physics, Biology, Calculus? Year 12 and Year 13 NCEA. Experienced science teacher. Saturday 1.30-2.30pm or 3-4pm. Ph. (06) 345-8718.

FOR FREE

FREE concrete fill, call Glenn, 0272-206-191.

PSYCHIC CONSULTANT

I am available to help with your past, present and future as well as important decisions. Yes! Of course I'm still working! Sandra Singleton. Numerologist Wanganui. 06-345-3803.

PERSONAL

FREE confidential health checks, STI and HIV screening. Whanganui Hospital. Phone for consultation 348-1775/021-323-077.

FIREWOOD FOR SALE

AFFORDABLE firewood starting from \$50 a cubic metre for sale. Please phone us on (06) 343-8466.

WANTED TO BUY

GINZA. Always buying, always selling. Good used furniture, antiques, China and collectables. Call Ginza 345-3154

TRADES AND SERVICES

APPLIANCE REPAIR CARE

Domestic And Commercial Appliance Repairs & Servicing

Get your drier serviced before winter sets in.

24 Bell St, Whanganui. Ph 06 345 5433
E: office@appliancecare.co.nz

100% locally owned

Dave Hoskin

CARRIERS LTD

Furniture removals door to door
National and international

390 Heads Rd. P.O. Box 5042 Wanganui
Phone: 06 344 7002 Email: darrell@hoskincarriers.co.nz

KEENE BUILDS

Reuben Keene Qualified Builder

fb @keenebuildswhanganui
0204 190 4693 reuben.renouf@gmail.com

STORAGE SPACE AVAILABLE

We have 50-1000 square metres of lockable storage available in Whanganui.
Please contact Bernard Reuters on **0274 495 125** or reuters@devonhomes.co.nz for further details.

BUYING CARS NOW

Most makes & models

Phone Mark **027 439 6777**

Wanganui Motors

82 Ridgway Street | Wanganui
www.wanganuimotors.co.nz

MONKEY BUSINESS

Tree Care

Eddie White
ARBORIST
mbtreecarenz@gmail.com
027 385 6597
www.monkeybusinessnz.com

OUR SERVICES

- pruning ●
- tree removal ●
- hedge trimming ●
- reductions ●
- storm damage maintenance ●
- planting ●

Get in touch for a **FREE** quote!

Get Your Best Mortgage Here

Natalie Sara
Residential & Commercial
Mortgage Adviser

☎ 022 164 1566
✉ natalie@vegaland.co.nz
🌐 www.vegaland.co.nz

Elevate Tree Service

- Tree felling
- Tree removals
- Pruning

- Digger Services
- Log Slabbing
- Chipping

022 355 4894
david.beatson@hotmail.com

NEED HELP?

Emergency.....111
 City Mission/Foodbank345 2139
 Women's Refuge Wanganui 344 2204



CLASSIFIEDS

52 Ingestre St Ph 345 3666
 Email: rivercitypress@xtra.co.nz

Nominate someone you think is deserving of our **Bouquet of the Week!**

Email or facebook message us with your nomination and reason why they deserve to win!

email: rivercitypress@xtra.co.nz
 facebook: River City Press Wanganui

PUBLIC NOTICES / ENTERTAINMENT

SHANE'S BIG BIRTHDAY CELEBRATION! STARS ON 78

Born 1946 - Rockin' the Planet Since 1966

SHANE AND THE SHAZAM! BAND

Join the party as Shane celebrates 78 years on the Planet and pays tribute to the rock/pop teen idols who inspired his 50+ year career!

SATURDAY 25 MAY, 7.30pm
CASTLECLIFF CLUB
 Restaurant and Bar open 5.30pm

WANTED

ANY Cars Wanted Dead or Alive

TOP CASH PAID

\$100 - \$1,000 for small car
\$100 - \$7,000 for 4x4 UTEs, Vans, 4WD, Trucks, Buses

We will beat any prices in the market by 10%

Ph Today **021 032 3006**
 Text: **022 555 0807**

Andrew London and the Swing Voters

ANDREW LONDON - GUITAR & VOX
KIRSTEN LONDON - BASS & VOX
WAYNE MASON - PIANO & VOX
BRIAN OMUNDSEN - SAX, HARMONICA & VOX
RYAN WATSON - DRUMS

SWING, BLUES, JAZZ, ROCK'N'ROLL!
 STELLAR STANDARDS AND OUTRAGEOUS ORIGINAL SONGS

Saturday 25th May, 7.30pm
THE WANGANUI CLUB, 136 ST HILL ST
 Tickets \$40 at trybooking.com or ph 027 442 9825, email theshow@corps.co.nz
 Includes tea, coffee & cake - Bar service available

Wanganui East Club (1974) Inc

Annual General Meeting

THE ANNUAL GENERAL MEETING OF THE WANGANUI EAST CLUB (1974) INC
 101 WAKEFIELD STREET
 IS TO BE HELD IN THE MAIN BAR on **SUNDAY 9th MAY 2024 at 10am**

AGENDA

- WELCOME & APOLOGIES
- MINUTES OF PREVIOUS AGM
- MATTERS ARISING
- STATEMENT OF ACCOUNTS
- GENERAL BUSINESS
- CLUB CONSTITUTION
- ELECTION OF OFFICERS

WANGANUI EAST CLUB

MEMBERS' DRAWS MUST GO!

SATURDAY 18 MAY
\$1200 - 6.30pm
\$400 - 7.30pm

101 Wakefield Street, Wanganui East
 Phone 06 343 7023
 Members, affiliated members and guest welcome.

River City Press
 Phone 345 3666. Email: rivercitypress@xtra.co.nz

SITUATION VACANT

Aviary Assistant

The feathered friends at our Aviary require a super organised carer to keep a close eye on their health and wellbeing and to ensure their home is kept vibrant and clean. This position is based within the Aviary and on the Reserve at Rotokawau Virginia Lake.

This is a temporary role for 3-6 months. The hours of work are: 8am - 12 noon Saturday and Sunday (4 hours per day) for two weekends every six weeks. There is also the possibility of additional casual days/staff cover as required.

You will require a full license and your own vehicle as you will be required to travel to town at times to collect food for the birds.

Experience with aviary birds/bird husbandry or vet nursing training would be an advantage as is the ability to work within a small team.

Enquiries about this vacancy can be directed to **Wendy Bainbridge, Team Leader Parks**
wendy.bainbridge@whanganui.govt.nz
 or 06 349 3075

Interested? Please review the position description and apply via our careers site without delay:
<https://whanganuidc.recruitmenthub.co.nz>

Reference code 6587477

Please note, only applications submitted via our careers page can be considered.

Applications close 20 May 2024

NOTICE OF GENERAL MEETING

TO BENEFICIAL OWNERS OF NGARAKAUWHAKARARA 16

St Paul's Presbyterian Church,
 112 Guyton Street, Whanganui
Saturday, 25 May 2024 at 10.00am

AGENDA:

1. Karakia Tīmatanga
2. Apologies
3. Whakawhanaungatanga
4. Trustee Update
5. Appoint trustees
6. Vary Trust Order
7. Karakia Whakamutunga

It is recommended you attend in person, however you can attend via Zoom.

Please RSVP here:
tinyurl.com/ngarakauwhakarara16

Contact:
glenn@maureaconsultancy.co.nz

BUYING and SELLING USED FURNITURE

Phone 345 3154
 54 Maria Place Extn
 Email: ginza2@xtra.co.nz

FRUIT & PRODUCE

FRESH vegetables available, open Thursdays, Fridays. Laugeson's Gardens, Westmere Road.

Winner of the House of Travel Fiji Raffle is Ticket #1388 - Colin and Jackie Gibson.

The winner has been notified. Thank you to everyone who bought a ticket!

CLUB metro RESTAURANT @Club metro

\$10 HEAT & EAT MEALS AVAILABLE
 Delivery by arrangement.

To order call **349 0149** or **027 588 6699** or visit our website: clubmetrofood.nz

THRIFTY TUESDAY DEAL - buy one full price meal and get the 2nd meal 1/2 price from 12pm.

Members, Guests & Affiliated members always welcome at **Restaurant @Club Metro** 13 Ridgway St



Road Safety Week

MAY
20 - 26

Holland Automotive - drive with confidence Be a road safety hero and take part in Road Safety Week



Andrew, Bryttany and Gregg

Andrew and Bryttany Holland set up Holland Automotive at 141 London Street in March last year and have been building up the business by good service and some attractive deals.

These include having the cheapest WOF in town at \$50. Customers

at time of payment, can also roll dice, and if they get double 1s, the WOF is free. Andrew says, "We've had quite a few winning, including two in one day." If you do your service and WOF at the same time the cost of the WOF is only \$25.

Andrews says, "This is

aimed at those who drive under 10,000km a year. At this level, it is possible to have your vehicle completely checked out, get your warrant and do it only once a year."

To assist people to cover the cost of vehicle servicing and repairs, they offer Afterpay and Zip to help spread the cost. They will also do MSD/WINZ quotes.

As part of their commitment to road safety, Holland Automotive sell tyres as well as doing fitting and balancing, carry stocks of replacement windscreen wipers as well as automotive light bulbs, or as Andrew says, "Pretty much most things."

The couple is supported by Gregg, mechanic and WOF inspector. Andrew describes him as having "an outstanding wealth of knowledge in the industry as well as vigilant eye for safety."

After just over one year in business, Holland Automotive is looking into the possibility of recruiting another mechanic.

They are open from 8am to 5pm but there is normally someone there from 7 to 7.30am.

Road Safety Week is from 20 - 26 May and there is still time to participate and join hundreds of communities, schools and organisations running activities to help raise awareness of road safety.

Road Safety Week is coordinated by Brake, the road safety charity, and sponsored by NZ Transport Agency Waka Kotahi and Beca. The week has the theme 'Be a road safety hero,' recognizing all those who are working to make our roads safer for everyone and who care for people after a crash - from emergency services workers to road designers and engineers, road workers who build and maintain roads to school crossing patrols and walking school bus volunteers, health professionals to community campaigners.

During the week, schools, community groups and organisations will also be calling on everyone to be road safety heroes and play their part in making journeys safer, however they use roads.

Brake is encouraging families and community leaders to go to www.roadsafetyweek.org.nz/ for a free online action pack of resources. This includes downloadable resources and activity ideas, interactive resources, activity sheets, advice, and case studies showing how others have got involved in previous years.

Road Safety Week has been engaging communities in road safety for

over ten years and is a great chance for community groups, families, and organisations to take action on local road safety issues and raise awareness to prevent needless casualties.

Caroline Perry, Brake's NZ Director says: "We believe it's everyone's human right to be able to get around in a safe and healthy way every day. There are lots of people who work to make our roads safer, to save lives when crashes happen, and to support those affected by crashes, so this Road Safety Week we want to recognise all these Road Safety Heroes and highlight how everyone can be a hero too."

"Parents and community groups can help get these vital messages out to families, young people and local drivers, making a difference to their local community. I would encourage anyone who hasn't already registered to head to www.roadsafetyweek.org.nz/ action-pack and sign up now for their free action pack."

Andrea Rickard, Managing Director - New Zealand, Beca says: "Improving road safety is a vital part of our work at Beca. We are proud to stand alongside Brake, Waka Kotahi, our partners and all of the road safety heroes in communities across Aotearoa, who work every day to make our roads safer."

Heroes will also be celebrated nationally throughout the week. The Yellow Ribbon Road Safety Alliance, a group of organisations working to raise aware-



ness of road safety will be presenting the annual Road Safety Hero Award during Road Safety Week.

If you have a Hero you would like to nominate for the award, to be highlighted on social media, or both, go to www.roadsafetyweek.org.nz/

communities. Another way the Alliance raises awareness of road safety is through use of the colour yellow, including wearing yellow ribbon pins and lighting up bridges, buildings, and icons yellow during Road Safety Week.

MDT Driver Training

LEVELS
Beginner - Intermediate - Advanced
VEHICLES: Cars - Trucks

To empower our clients with knowledge, understanding and skills to make every journey a safe and enjoyable one.



Find us on Facebook

Phone 027 368 5010
Email admin@mdtdrivertraining.co.nz
www.mdtdrivertraining.co.nz



HOLLANDAUTOMOTIVE
Drive with Confidence

FREE WOF

when you roll a double 1 with the dice at time of payment otherwise \$50

AUTOMOTIVE REPAIRS
SERVICING TYRES



Phone 06 777 3052
141 London St, Whanganui
info@hollandauto.co.nz
www.hollandauto.co.nz



Find us on Facebook
ZIP
afterpay



We act as a support service for those who need advice, direction, and assistance with their day-to-day management of a brain injury.

- Liaison Officer
- Support Groups for Clients & Whanau
- Information and Resources about Brain Injuries
- Advocacy service
- Area Whanganui-Waverley-Waimarino-Rangitikei

Community House, Room 104,
60 Ridgway Street | PO Box 102,
Whanganui 4541
P 06 347 9721 | M 027 227 1202
E liaison.whanganui@brain-injury.org.nz
FB @BIAWhanganui

Everyday, 90 New Zealanders sustain a brain injury - there's help on hand.



SHIELDS BROS
PANEL & PAINT

Whanganui

Proud to support the
Road Safety Awareness Week

77 Taupo Quay, Whanganui
0800 SHIELDS
www.shieldsbros.co.nz



Road Safety Week

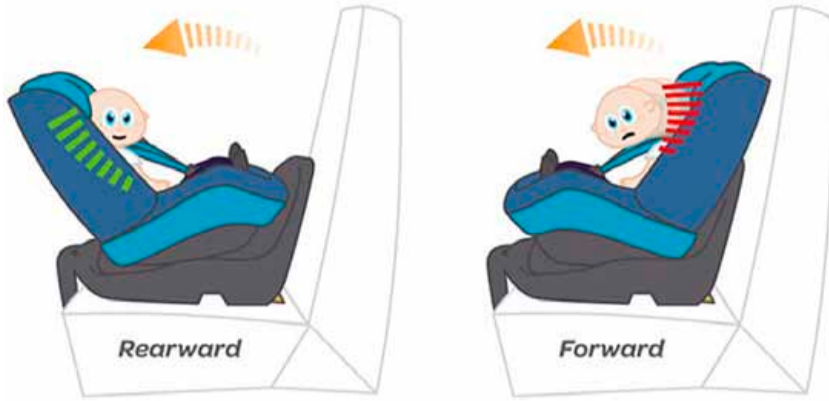
MAY
20 - 26

Best to be backwards in going forward - Winter driving - are you ready? ensuring child passenger safety

By Val Overweel, Horizons Regional Council, Road Safety Coordinator

Fitting child restraints into a vehicle can be challenging because child restraints and vehicles come in different sizes and shapes. It's important to ensure the child restraint fits securely and safely in the vehicle and is the right one for the child. As the driver, you are responsible for ensuring anyone under the age of 15 is correctly restrained. It is recommended children under the age of 12 years travel in the back seat.

Fortunately, we have a dedicated team of child restraint technicians from Little Buds who check child restraints and make adjustments as needed; ensuring belts and harnesses are not twisted, identifying expired or unsafe child restraints, ensuring there's no movement from the child restraint when fixed with the seat belt and any other issues they come across. Whether your child restraint is forward-facing or rear-facing, these technicians are skilled at mak-



ing sure everything is safe for your children and can offer valuable advice on choosing the best seat for your child.

During a recent Police checkpoint in Whanganui, technicians checked 137 child restraints of which 79% were incorrectly installed. The team were able to correct most of these onsite and for those that couldn't be corrected, advice was given on how to rectify what was wrong.

While it is a legal requirement to use an appropriate child restraint for the child's age until they turn seven, what's more important is ensuring the safety and security of our

children. Research shows that approximately 70% of road accidents are frontal collisions. Rear collisions, where vehicles collide in the same direction, are less severe and less common. Rear-facing seats significantly reduce the risk of spinal injuries for children under the age of four in a collision. The longer a child is rear-facing the safer they are.

Over 40 years ago, Sweden pioneered the use of rear-facing child restraints to protect a child's head and neck by spreading the forces over the entire back, similar to how astronauts are protected during space travel. Children

under the age of four are five times more protected when seated in a rear-facing position due to their relatively large and heavy heads compared to their bodies.

Horizons Regional Council Road Safety Team, New Zealand Police and the Little Buds team will continue to engage with families, ensuring that tamariki are securely restrained while travelling in vehicles.

To contact a technician or for more information on child passenger safety, visit the NZTA website at www.nzta.govt.nz and search for "child restraints."

Winter changes our habits. We scramble for our warm woollies, hunker down on the cold nights and crank up the heating, to name just a few, but how much do we consider our driving habits and our car's road fitness for the colder months?

Winter driving, especially on the highway, and car maintenance require a different approach, and just like our homes and wardrobes, it's wise to plan.

Here are a few essential tips to make your winter on the roads safer for you and your passengers and other users on the road:

- An important step for winter driving is to make sure that all exterior lights, including headlights, brake lights, and turn signals, are functioning correctly for maximum visibility on wintry roads.

- Upgrade to winter-specific wiper blades for better visibility and use freeze-resistant windshield washer fluid to maintain a clear view.

- Check your vehicle's tyre tread depth and

regularly test your tyre pressure.

- Ensure your coolant is at the right level and meets the manufacturer's specs. Give your cooling system a thorough once-over for any leaks.

Taking a trip out of town? Here's some wisdom to make your journey safer and more enjoyable.

- Allow extra time!
- Ensure your vehicle is safe for winter driving (see the tips above)

- Drive to the road and weather conditions.

- Slow down and be prepared for unexpected hazards.

- Allow greater follow-

ing distance between you and the vehicle ahead.

- Make sure your cell phone is well charged, check car charger also

- Have blankets, snacks, bottles of water ready in case of emergency or a breakdown.

- Learn about winter driving, including how to get your vehicle ready and how to put on snow chains, at www.nzta.govt.nz/winter-driving

- Check weather, travel conditions and traffic information on our highways before you set off at www.journeys.nzta.govt.nz or call 0800 4 HIGHWAYS.

Proudly supporting
Road Safety Awareness Week



Churton School

ENROL TODAY

or email office@churton.school.nz
Burmah Street, Aramoho, Wanganui

**I'm counting
ON YOU
EVERY TRIP**

- 1** Got the right car seat?
- 2** Fitted and adjusted correctly?
- 3** Know how to check it?



Make sure your child is safe

For more information contact our road safety coordinator on **0508 800 800**

NEW

Simplicity

A cost effective 40oz solution dyed Polypropylene

\$109.00

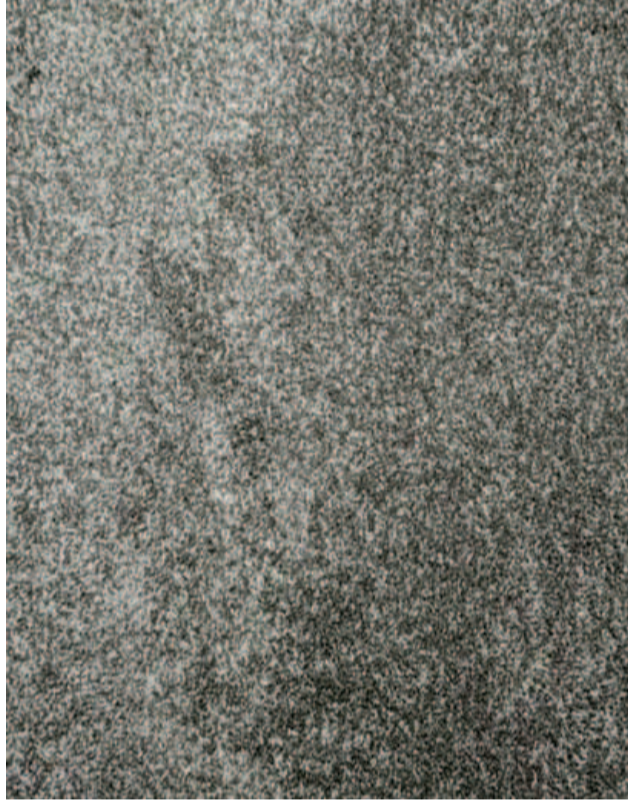
Per lineal metre



18 months interest free[^]

On in-store purchases \$1000 & over.

In-Store purchases \$1,000 & over. Ends 31 July 2024. Lending criteria, \$50 Annual Account Fee, fees, T&C's apply. Minimum payments of 3% of the monthly closing balance or \$10 (whichever is greater) are required throughout the interest free period. Paying the minimum monthly payments will not fully repay the loan before the end of the interest free period. Standard Interest Rate of 28.50% p.a. applies after interest free period. \$55 Establishment Fee or \$35 Advance Fee applies to Long Term Finance Purchases. Full T&C's see www.flooringxtra.co.nz



GREAT RANGE OF STOCK VINYL



2m Wide - \$68 lineal mtr 3m Wide - \$102 lineal mtr

